



Great Western Operating
Company, LLC
1801 Broadway, Suite 500
Denver, CO 80202

303.398.0302
866.742.1784 Fax
info@gwogco.com
www.gwogco.com

June 16, 2017

Colorado Oil and Gas Conservation Commission
1120 Lincoln Street, Suite 801
Denver, CO 80203

RE: Proposed Wellbore Spacing Unit
Raindance FD 20-399HC
Codell New Drill
NENE Sec. 30, Township 6N, Range 67W
Weld County, Colorado

Dear Director Lepore,

Great Western Operating Company, LLC (Great Western) is planning to drill the above captioned well in accordance with the provisions of Colorado Oil and Gas Conservation Commission (COGCC) Rule 318A.e.

Great Western's proposed wellbore spacing unit consists of:

Township 6 North, Range 67 West (Weld County):

Section 19: SE4SE4
Section 20: S2S2
Section 29: N2N2
Section 30: NE4NE4

Total Acres: 400

The 30 day notification time period has passed and we have not yet received any objections to such well locations or proposed spacing unit, therefore Great Western hereby requests the Director to approve the above mentioned well. Great Western respectfully requests the COGCC review the enclosed map illustrating the proposed wellbore spacing unit.

Respectfully,

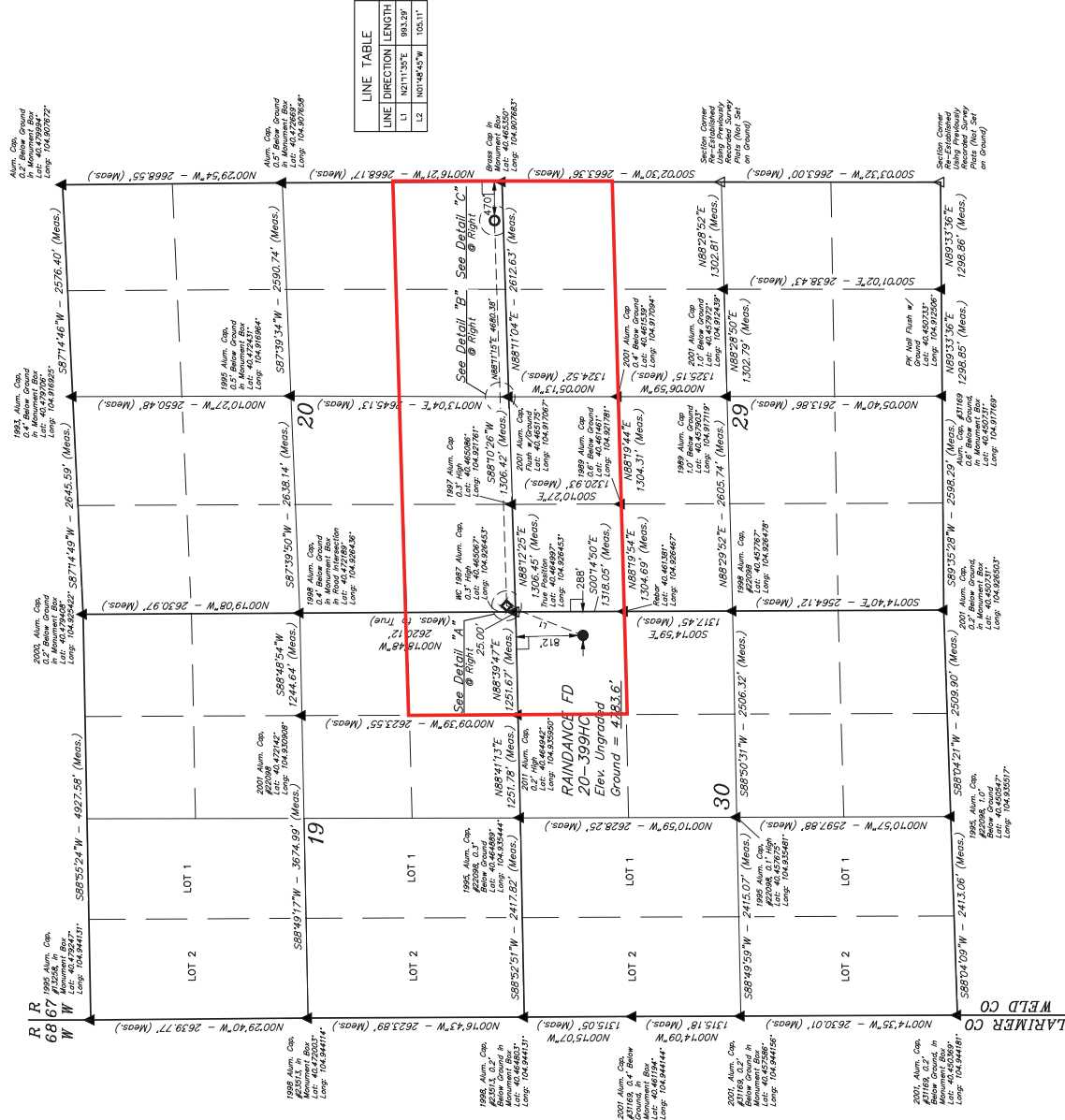
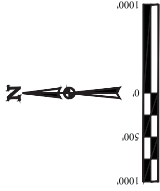
Ashley Noonan

Ashley Noonan
Senior Regulatory Analyst
Great Western Operating Company, LLC

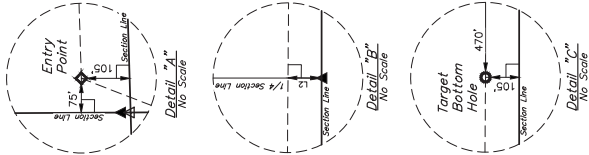
T6N, R67W, 6th P.M.

GREAT WESTERN OPERATING COMPANY
RAINANCE FD 20-399HC
NE 1/4 NE 1/4, SECTION 30, T6N, R67W, 6th P.M.
WELD COUNTY, COLORADO

UNITED STATES DEPARTMENT OF THE INTERIOR
BUREAU OF LAND SURVEY
BASIS OF BEARINGS AND DISTANCES
BASIS OF ELEVATION
USGS COOPERATIVE BASE NETWORK CONTROL STATION
DESIGNATION "VERMILYEA", NGS DATA SHEET LISTS THE
NAD 83 ELEVATION AS BEING 5629 FEET.



LINE TABLE		
LINE	DIRECTION	LENGTH
L1	N21°11'55"E	993.29'
L2	N07°48'45"W	105.11'



- LEGEND:
- 1" = 30' SYMBOL
 - PROPOSED WELLHEAD
 - TARGET BOTTOM HOLE
 - SECTION CORNERS LOCATED (NAD 83)
 - SECTION CORNERS RE-ESTABLISHED (Not Set on Ground)

NAD 83 SURFACE LOCATION		NAD 83 ENTRY POINT		NAD 83 TARGET BOTTOM HOLE	
UTM ZONE	18QUD	UTM ZONE	18QUD	UTM ZONE	18QUD
Easting	604553.97	Easting	604553.97	Easting	604553.97
Northing	4077553.17	Northing	4077553.17	Northing	4077553.17
Latitude	40°46'06.97"N	Latitude	40°46'06.97"N	Latitude	40°46'06.97"N
Longitude	-104°52'52.33"W	Longitude	-104°52'52.33"W	Longitude	-104°52'52.33"W

NAD 83 SURFACE LOCATION		NAD 83 ENTRY POINT		NAD 83 TARGET BOTTOM HOLE	
UTM ZONE	18QUD	UTM ZONE	18QUD	UTM ZONE	18QUD
Easting	604553.97	Easting	604553.97	Easting	604553.97
Northing	4077553.17	Northing	4077553.17	Northing	4077553.17
Latitude	40°46'06.97"N	Latitude	40°46'06.97"N	Latitude	40°46'06.97"N
Longitude	-104°52'52.33"W	Longitude	-104°52'52.33"W	Longitude	-104°52'52.33"W



REV:3 10-26-16 K.B. (SHL:EP:THI&NAME CHANGE)
JEFF S. LLC
Corporate Office: 43 South 200 East
Vernal, UT 84078 • (435) 798-1017
SCALE: 1" = 30'
DRAWN BY: CHAD MEYERS, L.C. 1051416
CHECKED BY: K.B. 1052516
DATE: 10-25-16
WELL LOCATION PLAT