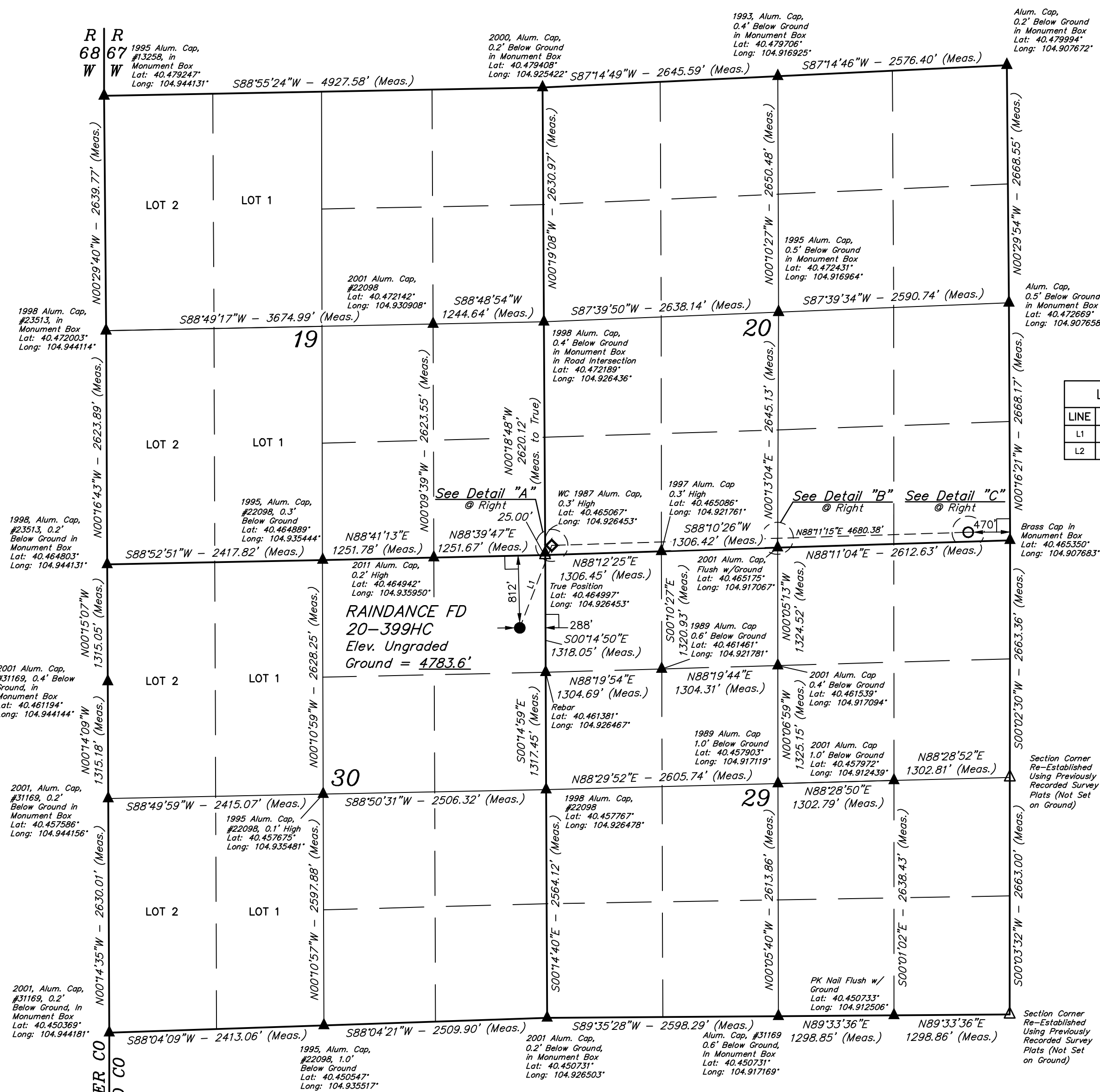
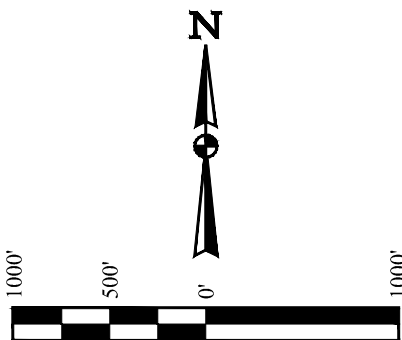


T6N, R67W, 6th P.M.

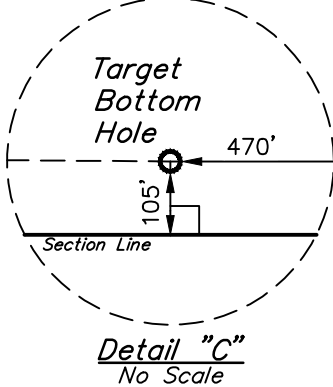
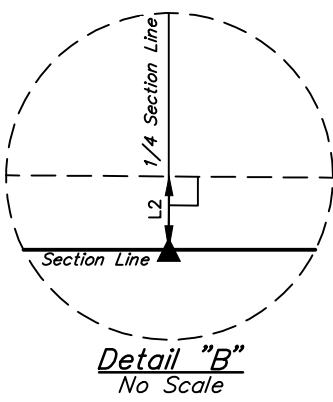
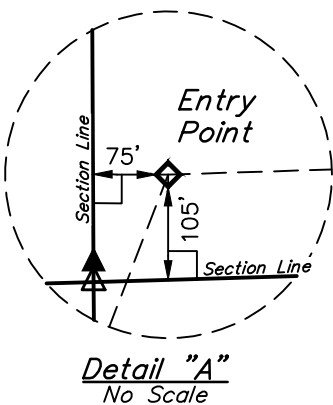
GREAT WESTERN OPERATING COMPANY

RAINDANCE FD 20-399HC  
NE 1/4 NE 1/4, SECTION 30, T6N, R67W, 6th P.M.  
WELD COUNTY, COLORADO

BASIS OF BEARINGS  
BASIS OF ELEVATION  
USGS COOPERATIVE BASE NETWORK CONTROL STATION,  
DESIGNATION "VERMILYEA". NGS DATA SHEET LISTS THE  
NAVD 88 ELEVATION AS BEING 5026 FEET.



LINE TABLE		
LINE	DIRECTION	LENGTH
L1	N21°11'35"E	993.29'
L2	N01°48'45"W	105.11'



- LEGEND:
- 90° SYMBOL
  - PROPOSED WELLHEAD.
  - TARGET BOTTOM HOLE.
  - ENTRY POINT.
  - SECTION CORNERS LOCATED. (NAD 83)
  - SECTION CORNERS RE-ESTABLISHED. (Not Set on Ground.) (NAD 83)

REV: 3 10-26-16 K.B. (SHL, EP, TBH & NAME CHANGE)

PDOP = 1.5

NAD 83 (SURFACE LOCATION)	NAD 83 (ENTRY POINT)	NAD 83 (TARGET BOTTOM HOLE)
LATITUDE = 40°27'45.93" (40.462758)	LATITUDE = 40°27'55.05" (40.465292)	LATITUDE = 40°27'56.18" (40.465606)
LONGITUDE = 104°55'38.99" (104.927497)	LONGITUDE = 104°55'34.26" (104.926183)	LONGITUDE = 104°54'33.74" (104.909372)
NAD 27 (SURFACE LOCATION)	NAD 27 (ENTRY POINT)	NAD 27 (TARGET BOTTOM HOLE)
LATITUDE = 40°27'45.99" (40.462775)	LATITUDE = 40°27'55.11" (40.465308)	LATITUDE = 40°27'56.25" (40.465625)
LONGITUDE = 104°55'37.08" (104.926967)	LONGITUDE = 104°55'32.35" (104.925653)	LONGITUDE = 104°54'31.83" (104.908842)

UELTS, LLC  
Corporate Office \* 85 South 200 East  
Vernal, UT 84078 \* (435) 789-1017

CHAD MEIERS, J.C.  
K.B.

10-14-16  
02-25-16  
1" = 1000'

WELL LOCATION PLAT