

# **EXTRACTION OIL & GAS**

**Weld County  
Sec 7-T4N-R68W  
TROT 8E-10-13N**

**ORIGINAL WELLBORE**

**Plan: PROPOSAL 1**

## **Standard Planning Report**

**23 May, 2017**



**WELL DETAILS: TROTT 8E-10-13N**

+N/-S	+E/-W	Northing	Easting	5035.0	Latitude	Longitude	Slot
0.0	0.0	1361363.26	3127957.82	40° 19' 27.962 N	105° 2' 27.863 W		

**SECTION DETAILS**

Sec	MD	Inc	Azi	TVD	+N/-S	+E/-W	Dleg	TFace	VSect	Target
1	0.0	0.00	0.00	0.0	0.0	0.0	0.00	0.00	0.0	
2	500.0	0.00	0.00	500.0	0.0	0.0	0.00	0.00	0.0	
3	1010.8	10.22	241.00	1008.1	-22.0	-39.7	2.00	241.00	-38.9	
4	4801.7	10.22	241.00	4738.9	-348.0	-627.8	0.00	0.00	-614.3	
5	5312.5	0.00	0.00	5247.0	-370.0	-667.5	2.00	180.00	-653.2	
6	5412.5	0.00	0.00	5347.0	-370.0	-667.5	0.00	0.00	-653.2	
7	6312.6	90.00	88.81	5920.0	-358.1	-94.6	10.00	88.81	-81.1	
8	7648.0	90.00	88.81	5920.0	-330.4	1240.5	0.00	0.00	1252.0	
9	12441.2	90.00	88.70	5920.0	-226.2	6032.6	0.00	-90.00	6036.9	

**ANNOTATIONS**

MD	Inc	Azi	TVD	+N/-S	+E/-W	VSect	Departure	Annotation
500.0	0.00	0.00	500.0	0.0	0.0	0.0	0.0	BUILD 2°/100'
1010.8	10.22	241.00	1008.1	-22.0	-39.7	-38.9	45.4	HOLD 10.22° INC
4801.7	10.22	241.00	4738.9	-348.0	-627.8	-614.3	717.8	DROP 2°/100'
5312.5	0.00	0.00	5247.0	-370.0	-667.5	-653.2	763.2	HOLD VERTICAL
5412.5	0.00	0.00	5347.0	-370.0	-667.5	-653.2	763.2	KOP, BUILD 10°/100'
6312.6	90.00	88.81	5920.0	-358.1	-94.6	-81.1	1336.2	LP @ 90° INC
7648.0	90.00	88.81	5920.0	-330.4	1240.5	1252.0	2671.6	HOLD
12441.2	90.00	88.70	5920.0	-226.2	6032.6	6036.9	7464.9	TD at 12441.2' MD

**DESIGN TARGET DETAILS**

Name	TVD	+N/-S	+E/-W	Northing	Easting	Latitude	Longitude	Shape
TROTT 13 - LP REV 2	5920.0	-330.4	1240.5	1361039.31	3129200.00	40° 19' 24.697 N	105° 2' 11.846 W	Point
- plan hits target center								
TROTT 13 - PBHL REV 2	5920.0	-226.2	6032.6	1361168.28	3133991.53	40° 19' 25.720 N	105° 1' 9.973 W	Point
- plan hits target center								
WAGGENER #8-44	6895.0	-762.1	5828.4	1360631.30	3133790.06	40° 19' 20.424 N	105° 1' 12.612 W	Circle (Radius: 50.0)
- plan misses target center by 1110.3usft at 12224.9usft MD (5920.0 TVD, -231.1 N, 5816.4 E)								

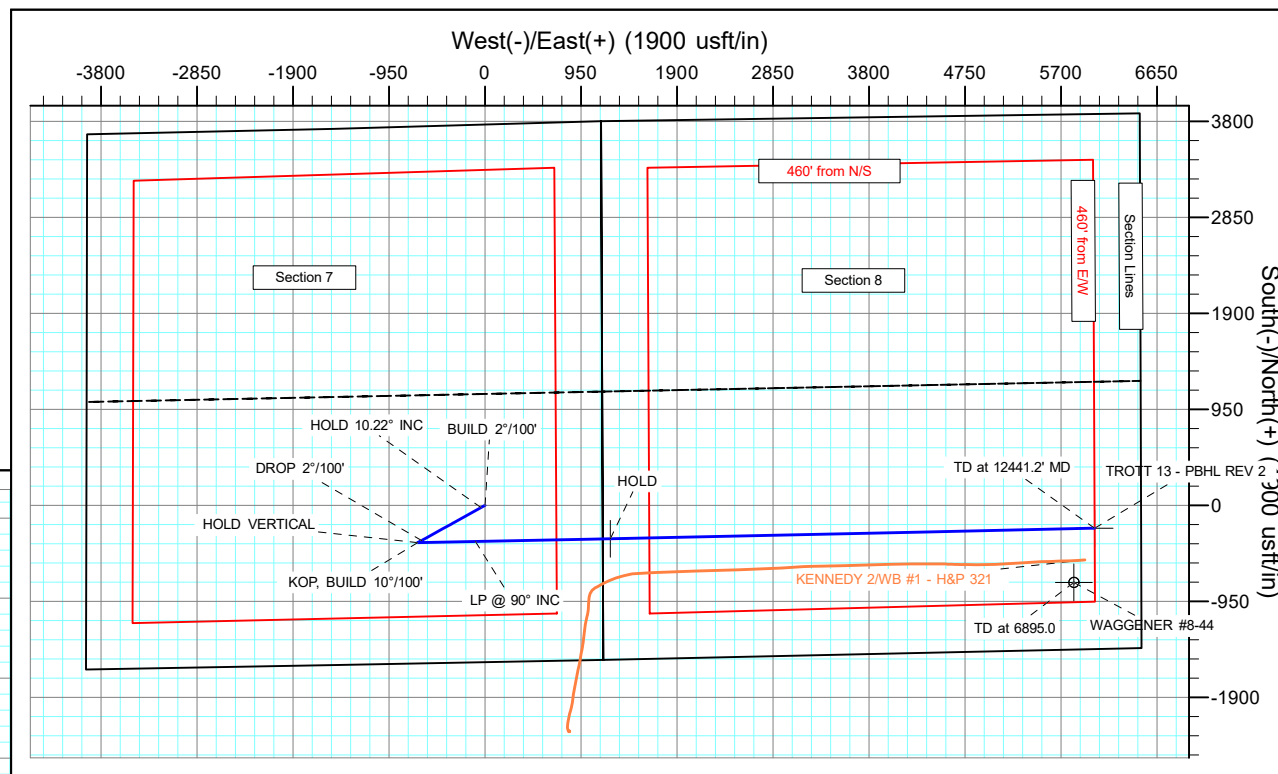
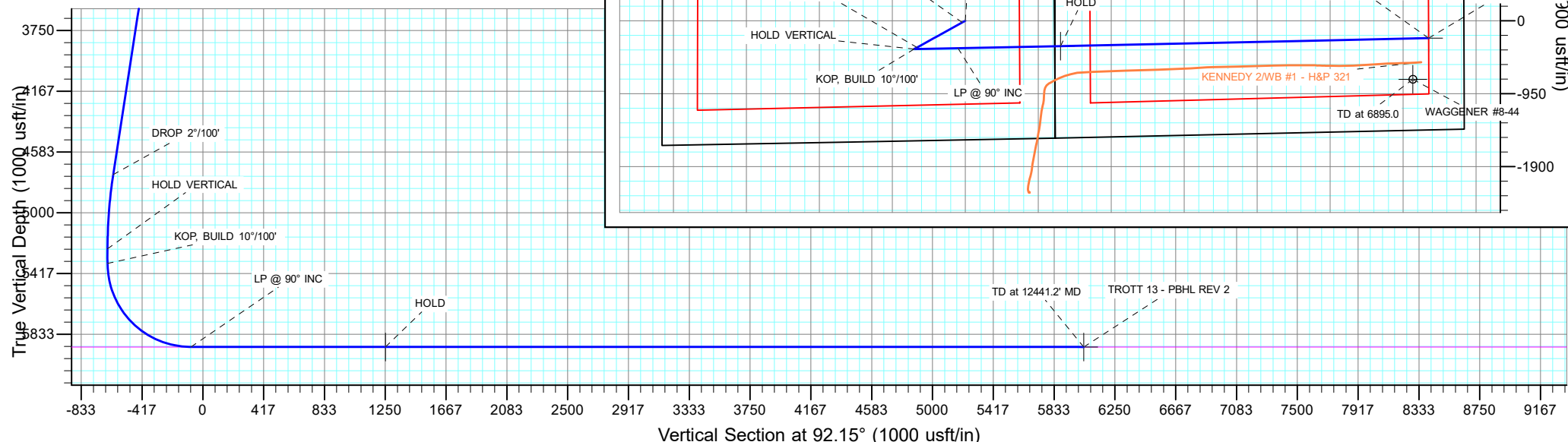
**FORMATION TOP DETAILS**

TVDPath	MDPath	Formation
2410.0	2435.3	PARKMAN
3010.0	3045.0	SUSSEX
3450.0	3492.0	SHANNON
5920.0	6312.6	NIOBARA

**PROJECT DETAILS: Weld County**

Geodetic System: US State Plane 1983  
Datum: North American Datum 1983  
Ellipsoid: GRS 1980  
Zone: Colorado Northern Zone  
System Datum: Mean Sea Level

SHL:  
1552' FSL, 1164' FEL  
Sec 7-T4N-R68W  
LP:  
1198' FSL, 75' FWL  
Sec 8-T4N-R68W  
BHL:  
1196' FSL, 460' FEL  
Sec 8-T4N-R68W



## Planning Report

<b>Database:</b>	EDT_32Bit_ODBC	<b>Local Co-ordinate Reference:</b>	Well TROTT 8E-10-13N
<b>Company:</b>	EXTRACTION OIL & GAS	<b>TVD Reference:</b>	KB 24 @ 5059.0usft
<b>Project:</b>	Weld County	<b>MD Reference:</b>	KB 24 @ 5059.0usft
<b>Site:</b>	Sec 7-T4N-R68W	<b>North Reference:</b>	True
<b>Well:</b>	TROTT 8E-10-13N	<b>Survey Calculation Method:</b>	Minimum Curvature
<b>Wellbore:</b>	ORIGINAL WELLBORE		
<b>Design:</b>	PROPOSAL 1		

Project	Weld County		
Map System:	US State Plane 1983	System Datum:	Mean Sea Level
Geo Datum:	North American Datum 1983		
Map Zone:	Colorado Northern Zone		

Site		Sec 7-T4N-R68W			
Site Position:		Northing:	1,359,838.99 usft	Latitude:	40° 19' 12.839 N
From:	Lat/Long	Easting:	3,129,136.57 usft	Longitude:	105° 2' 12.746 W
Position Uncertainty:	0.0 usft	Slot Radius:	13.200 in	Grid Convergence:	0.30

Well	TROTT 8E-10-13N					
Well Position	+N/-S	1,530.4 usft	Northing:	1,361,363.26 usft	Latitude:	40° 19' 27.962 N
	+E/-W	-1,170.8 usft	Easting:	3,127,957.82 usft	Longitude:	105° 2' 27.863 W
Position Uncertainty		0.0 usft	Wellhead Elevation:		Ground Level:	5,035.0 usft

Wellbore	ORIGINAL WELLBORE				
Magnetics	Model Name	Sample Date	Declination (°)	Dip Angle (°)	Field Strength (nT)
	IGRF2015	4/4/2017	8.37	66.76	52,345.04223577

Design	PROPOSAL 1			
Audit Notes:				
Version:	Phase:	PROTOTYPE	Tie On Depth:	0.0
Vertical Section:	Depth From (TVD) (usft)	+N/-S (usft)	+E/-W (usft)	Direction (°)
	0.0	0.0	0.0	92.15

Plan Survey Tool Program			Date	5/23/2017	
Depth From (usft)	Depth To (usft)	Survey (Wellbore)	Tool Name	Remarks	
1	0.0	12,441.2	PROPOSAL 1 (ORIGINAL WELL	MWD OWSG	
			OWSG MWD - Standard		

Plan Sections										
Measured Depth (usft)	Inclination (°)	Azimuth (°)	Vertical Depth (usft)	+N/-S (usft)	+E/-W (usft)	Dogleg Rate (°/100ft)	Build Rate (°/100ft)	Turn Rate (°/100ft)	TFO (°)	Target
0.0	0.00	0.00	0.0	0.0	0.0	0.00	0.00	0.00	0.00	
500.0	0.00	0.00	500.0	0.0	0.0	0.00	0.00	0.00	0.00	
1,010.8	10.22	241.00	1,008.1	-22.0	-39.7	2.00	2.00	0.00	241.00	
4,801.7	10.22	241.00	4,738.9	-348.0	-627.8	0.00	0.00	0.00	0.00	
5,312.5	0.00	0.00	5,247.0	-370.0	-667.5	2.00	-2.00	0.00	180.00	
5,412.5	0.00	0.00	5,347.0	-370.0	-667.5	0.00	0.00	0.00	0.00	
6,312.6	90.00	88.81	5,920.0	-358.1	-94.6	10.00	10.00	0.00	88.81	
7,648.0	90.00	88.81	5,920.0	-330.4	1,240.5	0.00	0.00	0.00	0.00	TROTT 13 - LP REV :
12,441.2	90.00	88.70	5,920.0	-226.2	6,032.6	0.00	0.00	0.00	-90.00	TROTT 13 - PBHL RE

# Planning Report

<b>Database:</b>	EDT_32Bit_ODBC	<b>Local Co-ordinate Reference:</b>	Well TROTT 8E-10-13N
<b>Company:</b>	EXTRACTION OIL & GAS	<b>TVD Reference:</b>	KB 24 @ 5059.0usft
<b>Project:</b>	Weld County	<b>MD Reference:</b>	KB 24 @ 5059.0usft
<b>Site:</b>	Sec 7-T4N-R68W	<b>North Reference:</b>	True
<b>Well:</b>	TROTT 8E-10-13N	<b>Survey Calculation Method:</b>	Minimum Curvature
<b>Wellbore:</b>	ORIGINAL WELLBORE		
<b>Design:</b>	PROPOSAL 1		

Planned Survey									
Measured Depth (usft)	Inclination (°)	Azimuth (°)	Vertical Depth (usft)	+N/-S (usft)	+E/-W (usft)	Vertical Section (usft)	Dogleg Rate (°/100ft)	Build Rate (°/100ft)	Turn Rate (°/100ft)
0.0	0.00	0.00	0.0	0.0	0.0	0.0	0.00	0.00	0.00
100.0	0.00	0.00	100.0	0.0	0.0	0.0	0.00	0.00	0.00
200.0	0.00	0.00	200.0	0.0	0.0	0.0	0.00	0.00	0.00
300.0	0.00	0.00	300.0	0.0	0.0	0.0	0.00	0.00	0.00
400.0	0.00	0.00	400.0	0.0	0.0	0.0	0.00	0.00	0.00
500.0	0.00	0.00	500.0	0.0	0.0	0.0	0.00	0.00	0.00
BUILD 2°/100'									
600.0	2.00	241.00	600.0	-0.8	-1.5	-1.5	2.00	2.00	0.00
700.0	4.00	241.00	699.8	-3.4	-6.1	-6.0	2.00	2.00	0.00
800.0	6.00	241.00	799.5	-7.6	-13.7	-13.4	2.00	2.00	0.00
900.0	8.00	241.00	898.7	-13.5	-24.4	-23.9	2.00	2.00	0.00
1,000.0	10.00	241.00	997.5	-21.1	-38.1	-37.2	2.00	2.00	0.00
1,010.8	10.22	241.00	1,008.1	-22.0	-39.7	-38.9	2.00	2.00	0.00
HOLD 10.22° INC									
1,100.0	10.22	241.00	1,095.9	-29.7	-53.6	-52.4	0.00	0.00	0.00
1,200.0	10.22	241.00	1,194.3	-38.3	-69.1	-67.6	0.00	0.00	0.00
1,300.0	10.22	241.00	1,292.7	-46.9	-84.6	-82.8	0.00	0.00	0.00
1,400.0	10.22	241.00	1,391.1	-55.5	-100.1	-97.9	0.00	0.00	0.00
1,500.0	10.22	241.00	1,489.5	-64.1	-115.6	-113.1	0.00	0.00	0.00
1,600.0	10.22	241.00	1,588.0	-72.7	-131.1	-128.3	0.00	0.00	0.00
1,700.0	10.22	241.00	1,686.4	-81.3	-146.6	-143.5	0.00	0.00	0.00
1,800.0	10.22	241.00	1,784.8	-89.9	-162.1	-158.7	0.00	0.00	0.00
1,900.0	10.22	241.00	1,883.2	-98.5	-177.7	-173.8	0.00	0.00	0.00
2,000.0	10.22	241.00	1,981.6	-107.1	-193.2	-189.0	0.00	0.00	0.00
2,100.0	10.22	241.00	2,080.0	-115.7	-208.7	-204.2	0.00	0.00	0.00
2,200.0	10.22	241.00	2,178.4	-124.3	-224.2	-219.4	0.00	0.00	0.00
2,300.0	10.22	241.00	2,276.9	-132.9	-239.7	-234.6	0.00	0.00	0.00
2,400.0	10.22	241.00	2,375.3	-141.5	-255.2	-249.7	0.00	0.00	0.00
2,435.3	10.22	241.00	2,410.0	-144.5	-260.7	-255.1	0.00	0.00	0.00
PARKMAN									
2,500.0	10.22	241.00	2,473.7	-150.1	-270.7	-264.9	0.00	0.00	0.00
2,600.0	10.22	241.00	2,572.1	-158.7	-286.2	-280.1	0.00	0.00	0.00
2,700.0	10.22	241.00	2,670.5	-167.3	-301.8	-295.3	0.00	0.00	0.00
2,800.0	10.22	241.00	2,768.9	-175.9	-317.3	-310.5	0.00	0.00	0.00
2,900.0	10.22	241.00	2,867.3	-184.5	-332.8	-325.6	0.00	0.00	0.00
3,000.0	10.22	241.00	2,965.8	-193.1	-348.3	-340.8	0.00	0.00	0.00
3,045.0	10.22	241.00	3,010.0	-196.9	-355.3	-347.6	0.00	0.00	0.00
SUSSEX									
3,100.0	10.22	241.00	3,064.2	-201.7	-363.8	-356.0	0.00	0.00	0.00
3,200.0	10.22	241.00	3,162.6	-210.3	-379.3	-371.2	0.00	0.00	0.00
3,300.0	10.22	241.00	3,261.0	-218.9	-394.8	-386.4	0.00	0.00	0.00
3,400.0	10.22	241.00	3,359.4	-227.5	-410.3	-401.5	0.00	0.00	0.00
3,492.0	10.22	241.00	3,450.0	-235.4	-424.6	-415.5	0.00	0.00	0.00
SHANNON									
3,500.0	10.22	241.00	3,457.8	-236.1	-425.9	-416.7	0.00	0.00	0.00
3,600.0	10.22	241.00	3,556.2	-244.7	-441.4	-431.9	0.00	0.00	0.00
3,700.0	10.22	241.00	3,654.7	-253.3	-456.9	-447.1	0.00	0.00	0.00
3,800.0	10.22	241.00	3,753.1	-261.8	-472.4	-462.2	0.00	0.00	0.00
3,900.0	10.22	241.00	3,851.5	-270.4	-487.9	-477.4	0.00	0.00	0.00
4,000.0	10.22	241.00	3,949.9	-279.0	-503.4	-492.6	0.00	0.00	0.00
4,100.0	10.22	241.00	4,048.3	-287.6	-518.9	-507.8	0.00	0.00	0.00
4,200.0	10.22	241.00	4,146.7	-296.2	-534.4	-523.0	0.00	0.00	0.00
4,300.0	10.22	241.00	4,245.2	-304.8	-550.0	-538.1	0.00	0.00	0.00

# Planning Report

<b>Database:</b>	EDT_32Bit_ODBC	<b>Local Co-ordinate Reference:</b>	Well TROTT 8E-10-13N
<b>Company:</b>	EXTRACTION OIL & GAS	<b>TVD Reference:</b>	KB 24 @ 5059.0usft
<b>Project:</b>	Weld County	<b>MD Reference:</b>	KB 24 @ 5059.0usft
<b>Site:</b>	Sec 7-T4N-R68W	<b>North Reference:</b>	True
<b>Well:</b>	TROTT 8E-10-13N	<b>Survey Calculation Method:</b>	Minimum Curvature
<b>Wellbore:</b>	ORIGINAL WELLBORE		
<b>Design:</b>	PROPOSAL 1		

Planned Survey									
Measured Depth (usft)	Inclination (°)	Azimuth (°)	Vertical Depth (usft)	+N/-S (usft)	+E/-W (usft)	Vertical Section (usft)	Dogleg Rate (°/100ft)	Build Rate (°/100ft)	Turn Rate (°/100ft)
4,400.0	10.22	241.00	4,343.6	-313.4	-565.5	-553.3	0.00	0.00	0.00
4,500.0	10.22	241.00	4,442.0	-322.0	-581.0	-568.5	0.00	0.00	0.00
4,600.0	10.22	241.00	4,540.4	-330.6	-596.5	-583.7	0.00	0.00	0.00
4,700.0	10.22	241.00	4,638.8	-339.2	-612.0	-598.9	0.00	0.00	0.00
4,801.7	10.22	241.00	4,738.9	-348.0	-627.8	-614.3	0.00	0.00	0.00
<b>DROP 2°/100'</b>									
4,900.0	8.25	241.00	4,835.9	-355.6	-641.6	-627.8	2.00	-2.00	0.00
5,000.0	6.25	241.00	4,935.1	-361.7	-652.6	-638.6	2.00	-2.00	0.00
5,100.0	4.25	241.00	5,034.7	-366.2	-660.6	-646.4	2.00	-2.00	0.00
5,200.0	2.25	241.00	5,134.5	-368.9	-665.6	-651.3	2.00	-2.00	0.00
5,300.0	0.25	241.00	5,234.5	-370.0	-667.5	-653.1	2.00	-2.00	0.00
5,312.5	0.00	0.00	5,247.0	-370.0	-667.5	-653.2	2.00	-2.00	951.63
<b>HOLD VERTICAL</b>									
5,400.0	0.00	0.00	5,334.5	-370.0	-667.5	-653.2	0.00	0.00	0.00
5,412.5	0.00	0.00	5,347.0	-370.0	-667.5	-653.2	0.00	0.00	0.00
<b>KOP, BUILD 10°/100'</b>									
5,450.0	3.75	88.81	5,384.5	-370.0	-666.3	-651.9	10.00	10.00	0.00
5,500.0	8.75	88.81	5,434.2	-369.9	-660.8	-646.5	10.00	10.00	0.00
5,550.0	13.75	88.81	5,483.2	-369.7	-651.1	-636.8	10.00	10.00	0.00
5,600.0	18.75	88.81	5,531.2	-369.4	-637.1	-622.8	10.00	10.00	0.00
5,650.0	23.75	88.81	5,577.8	-369.0	-619.0	-604.7	10.00	10.00	0.00
5,700.0	28.75	88.81	5,622.6	-368.5	-596.9	-582.7	10.00	10.00	0.00
5,750.0	33.75	88.81	5,665.3	-368.0	-571.0	-556.8	10.00	10.00	0.00
5,800.0	38.75	88.81	5,705.6	-367.4	-541.4	-527.3	10.00	10.00	0.00
5,850.0	43.75	88.81	5,743.2	-366.7	-508.5	-494.4	10.00	10.00	0.00
5,900.0	48.75	88.81	5,777.8	-365.9	-472.4	-458.3	10.00	10.00	0.00
5,950.0	53.75	88.81	5,809.1	-365.1	-433.4	-419.4	10.00	10.00	0.00
6,000.0	58.75	88.81	5,836.8	-364.3	-391.9	-377.9	10.00	10.00	0.00
6,050.0	63.74	88.81	5,860.9	-363.4	-348.0	-334.2	10.00	10.00	0.00
6,100.0	68.74	88.81	5,881.0	-362.4	-302.3	-288.5	10.00	10.00	0.00
6,150.0	73.74	88.81	5,897.1	-361.4	-255.0	-241.3	10.00	10.00	0.00
6,200.0	78.74	88.81	5,909.0	-360.4	-206.4	-192.8	10.00	10.00	0.00
6,250.0	83.74	88.81	5,916.6	-359.4	-157.1	-143.5	10.00	10.00	0.00
6,300.0	88.74	88.81	5,919.9	-358.4	-107.2	-93.7	10.00	10.00	0.00
6,312.6	90.00	88.81	5,920.0	-358.1	-94.6	-81.1	10.00	10.00	0.00
<b>LP @ 90° INC - NIOBRARA</b>									
6,400.0	90.00	88.81	5,920.0	-356.3	-7.2	6.1	0.00	0.00	0.00
6,500.0	90.00	88.81	5,920.0	-354.2	92.8	106.0	0.00	0.00	0.00
6,600.0	90.00	88.81	5,920.0	-352.1	192.7	205.8	0.00	0.00	0.00
6,700.0	90.00	88.81	5,920.0	-350.1	292.7	305.6	0.00	0.00	0.00
6,800.0	90.00	88.81	5,920.0	-348.0	392.7	405.5	0.00	0.00	0.00
6,900.0	90.00	88.81	5,920.0	-345.9	492.7	505.3	0.00	0.00	0.00
7,000.0	90.00	88.81	5,920.0	-343.8	592.7	605.1	0.00	0.00	0.00
7,100.0	90.00	88.81	5,920.0	-341.8	692.6	705.0	0.00	0.00	0.00
7,200.0	90.00	88.81	5,920.0	-339.7	792.6	804.8	0.00	0.00	0.00
7,300.0	90.00	88.81	5,920.0	-337.6	892.6	904.6	0.00	0.00	0.00
7,400.0	90.00	88.81	5,920.0	-335.5	992.6	1,004.4	0.00	0.00	0.00
7,500.0	90.00	88.81	5,920.0	-333.4	1,092.5	1,104.3	0.00	0.00	0.00
7,600.0	90.00	88.81	5,920.0	-331.4	1,192.5	1,204.1	0.00	0.00	0.00
7,648.0	90.00	88.81	5,920.0	-330.4	1,240.5	1,252.0	0.00	0.00	0.00
<b>HOLD</b>									
7,700.0	90.00	88.81	5,920.0	-329.3	1,292.5	1,303.9	0.00	0.00	0.00
7,800.0	90.00	88.81	5,920.0	-327.2	1,392.5	1,403.8	0.00	0.00	0.00

# Planning Report

<b>Database:</b>	EDT_32Bit_ODBC	<b>Local Co-ordinate Reference:</b>	Well TROTT 8E-10-13N
<b>Company:</b>	EXTRACTION OIL & GAS	<b>TVD Reference:</b>	KB 24 @ 5059.0usft
<b>Project:</b>	Weld County	<b>MD Reference:</b>	KB 24 @ 5059.0usft
<b>Site:</b>	Sec 7-T4N-R68W	<b>North Reference:</b>	True
<b>Well:</b>	TROTT 8E-10-13N	<b>Survey Calculation Method:</b>	Minimum Curvature
<b>Wellbore:</b>	ORIGINAL WELLBORE		
<b>Design:</b>	PROPOSAL 1		

Planned Survey									
Measured Depth (usft)	Inclination (°)	Azimuth (°)	Vertical Depth (usft)	+N/-S (usft)	+E/-W (usft)	Vertical Section (usft)	Dogleg Rate (°/100ft)	Build Rate (°/100ft)	Turn Rate (°/100ft)
7,900.0	90.00	88.80	5,920.0	-325.1	1,492.5	1,503.6	0.00	0.00	0.00
8,000.0	90.00	88.80	5,920.0	-323.0	1,592.4	1,603.4	0.00	0.00	0.00
8,100.0	90.00	88.80	5,920.0	-320.9	1,692.4	1,703.3	0.00	0.00	0.00
8,200.0	90.00	88.80	5,920.0	-318.8	1,792.4	1,803.1	0.00	0.00	0.00
8,300.0	90.00	88.80	5,920.0	-316.7	1,892.4	1,902.9	0.00	0.00	0.00
8,400.0	90.00	88.79	5,920.0	-314.6	1,992.4	2,002.7	0.00	0.00	0.00
8,500.0	90.00	88.79	5,920.0	-312.5	2,092.3	2,102.6	0.00	0.00	0.00
8,600.0	90.00	88.79	5,920.0	-310.4	2,192.3	2,202.4	0.00	0.00	0.00
8,700.0	90.00	88.79	5,920.0	-308.3	2,292.3	2,302.2	0.00	0.00	0.00
8,800.0	90.00	88.78	5,920.0	-306.2	2,392.3	2,402.1	0.00	0.00	0.00
8,900.0	90.00	88.78	5,920.0	-304.1	2,492.2	2,501.9	0.00	0.00	0.00
9,000.0	90.00	88.78	5,920.0	-301.9	2,592.2	2,601.7	0.00	0.00	0.00
9,100.0	90.00	88.78	5,920.0	-299.8	2,692.2	2,701.5	0.00	0.00	0.00
9,200.0	90.00	88.77	5,920.0	-297.7	2,792.2	2,801.4	0.00	0.00	0.00
9,300.0	90.00	88.77	5,920.0	-295.5	2,892.1	2,901.2	0.00	0.00	0.00
9,400.0	90.00	88.77	5,920.0	-293.4	2,992.1	3,001.0	0.00	0.00	0.00
9,500.0	90.00	88.77	5,920.0	-291.2	3,092.1	3,100.8	0.00	0.00	0.00
9,600.0	90.00	88.77	5,920.0	-289.1	3,192.1	3,200.7	0.00	0.00	0.00
9,700.0	90.00	88.76	5,920.0	-286.9	3,292.1	3,300.5	0.00	0.00	0.00
9,800.0	90.00	88.76	5,920.0	-284.8	3,392.0	3,400.3	0.00	0.00	0.00
9,900.0	90.00	88.76	5,920.0	-282.6	3,492.0	3,500.1	0.00	0.00	0.00
10,000.0	90.00	88.76	5,920.0	-280.4	3,592.0	3,600.0	0.00	0.00	0.00
10,100.0	90.00	88.75	5,920.0	-278.2	3,692.0	3,699.8	0.00	0.00	0.00
10,200.0	90.00	88.75	5,920.0	-276.1	3,791.9	3,799.6	0.00	0.00	0.00
10,300.0	90.00	88.75	5,920.0	-273.9	3,891.9	3,899.4	0.00	0.00	0.00
10,400.0	90.00	88.75	5,920.0	-271.7	3,991.9	3,999.3	0.00	0.00	0.00
10,500.0	90.00	88.74	5,920.0	-269.5	4,091.9	4,099.1	0.00	0.00	0.00
10,600.0	90.00	88.74	5,920.0	-267.3	4,191.8	4,198.9	0.00	0.00	0.00
10,700.0	90.00	88.74	5,920.0	-265.1	4,291.8	4,298.7	0.00	0.00	0.00
10,800.0	90.00	88.74	5,920.0	-262.9	4,391.8	4,398.6	0.00	0.00	0.00
10,900.0	90.00	88.74	5,920.0	-260.7	4,491.8	4,498.4	0.00	0.00	0.00
11,000.0	90.00	88.73	5,920.0	-258.5	4,591.7	4,598.2	0.00	0.00	0.00
11,100.0	90.00	88.73	5,920.0	-256.3	4,691.7	4,698.0	0.00	0.00	0.00
11,200.0	90.00	88.73	5,920.0	-254.1	4,791.7	4,797.9	0.00	0.00	0.00
11,300.0	90.00	88.73	5,920.0	-251.9	4,891.7	4,897.7	0.00	0.00	0.00
11,400.0	90.00	88.72	5,920.0	-249.6	4,991.6	4,997.5	0.00	0.00	0.00
11,500.0	90.00	88.72	5,920.0	-247.4	5,091.6	5,097.3	0.00	0.00	0.00
11,600.0	90.00	88.72	5,920.0	-245.2	5,191.6	5,197.1	0.00	0.00	0.00
11,700.0	90.00	88.72	5,920.0	-242.9	5,291.6	5,297.0	0.00	0.00	0.00
11,800.0	90.00	88.71	5,920.0	-240.7	5,391.5	5,396.8	0.00	0.00	0.00
11,900.0	90.00	88.71	5,920.0	-238.4	5,491.5	5,496.6	0.00	0.00	0.00
12,000.0	90.00	88.71	5,920.0	-236.2	5,591.5	5,596.4	0.00	0.00	0.00
12,100.0	90.00	88.71	5,920.0	-233.9	5,691.5	5,696.2	0.00	0.00	0.00
12,200.0	90.00	88.70	5,920.0	-231.7	5,791.4	5,796.1	0.00	0.00	0.00
12,300.0	90.00	88.70	5,920.0	-229.4	5,891.4	5,895.9	0.00	0.00	0.00
12,400.0	90.00	88.70	5,920.0	-227.1	5,991.4	5,995.7	0.00	0.00	0.00
12,441.2	90.00	88.70	5,920.0	-226.2	6,032.6	6,036.9	0.00	0.00	0.00
TD at 12441.2' MD									

## Planning Report

<b>Database:</b>	EDT_32Bit_ODBC	<b>Local Co-ordinate Reference:</b>	Well TROTT 8E-10-13N
<b>Company:</b>	EXTRACTION OIL & GAS	<b>TVD Reference:</b>	KB 24 @ 5059.0usft
<b>Project:</b>	Weld County	<b>MD Reference:</b>	KB 24 @ 5059.0usft
<b>Site:</b>	Sec 7-T4N-R68W	<b>North Reference:</b>	True
<b>Well:</b>	TROTT 8E-10-13N	<b>Survey Calculation Method:</b>	Minimum Curvature
<b>Wellbore:</b>	ORIGINAL WELLBORE		
<b>Design:</b>	PROPOSAL 1		

Design Targets									
Target Name									
- hit/miss target	Dip Angle	Dip Dir.	TVD	+N/-S	+E/-W	Northing	Easting	Latitude	Longitude
- Shape	(°)	(°)	(usft)	(usft)	(usft)	(usft)	(usft)		
TROTT 13 - LP REV 2	0.00	0.00	5,920.0	-330.4	1,240.5	1,361,039.31	3,129,200.00	40° 19' 24.697 N	105° 2' 11.846 W
- plan hits target center									
- Point									
TROTT 13 - PBHL REV	0.00	0.00	5,920.0	-226.2	6,032.6	1,361,168.28	3,133,991.53	40° 19' 25.720 N	105° 1' 9.973 W
- plan hits target center									
- Point									

Formations						
Measured Depth	Vertical Depth	Name	Lithology	Dip	Dip Direction	
(usft)	(usft)			(°)	(°)	
2,435.3	2,410.0	PARKMAN				
3,045.0	3,010.0	SUSSEX				
3,492.0	3,450.0	SHANNON				
6,312.6	5,920.0	NIOBRARA				

Plan Annotations					
Measured Depth	Vertical Depth	Local Coordinates			
(usft)	(usft)	+N/-S (usft)	+E/-W (usft)	Comment	
500.0	500.0	0.0	0.0	BUILD 2°/100'	
1,010.8	1,008.1	-22.0	-39.7	HOLD 10.22° INC	
4,801.7	4,738.9	-348.0	-627.8	DROP 2°/100'	
5,312.5	5,247.0	-370.0	-667.5	HOLD VERTICAL	
5,412.5	5,347.0	-370.0	-667.5	KOP, BUILD 10°/100'	
6,312.6	5,920.0	-358.1	-94.6	LP @ 90° INC	
7,648.0	5,920.0	-330.4	1,240.5	HOLD	
12,441.2	5,920.0	-226.2	6,032.6	TD at 12441.2' MD	