

# **EXTRACTION OIL & GAS**

**Weld County  
Sec 7-T4N-R68W  
TROT 8E-10-11N**

**ORIGINAL WELLBORE**

**Plan: PROPOSAL 1**

## **Standard Planning Report**

**23 May, 2017**



WELL DETAILS: TROTT 8E-10-11N

+N/-S	+E/-W	Northing	Easting	5034.0	Latitude	Longitude	Slot
0.0	0.0	1361363.13	3128354.03	40° 19' 27.941 N	105° 2' 22.747 W		

SECTION DETAILS

Sec	MD	Inc	Azi	TVD	+N/-S	+E/-W	Dleg	TFace	VSect	Target
1	0.0	0.00	0.00	0.0	0.0	0.0	0.00	0.00	0.0	
2	100.0	0.00	0.00	100.0	0.0	0.0	0.00	0.00	0.0	
3	704.5	12.09	95.00	700.0	-5.5	63.3	2.00	95.00	63.2	
4	804.5	12.09	95.00	797.8	-7.4	84.2	0.00	0.00	84.0	
5	1320.7	1.77	89.64	1309.6	-12.0	146.2	2.00	-179.08	145.9	
6	5377.9	1.77	89.64	5364.8	-11.2	271.7	0.00	0.00	271.5	
7	6260.1	90.00	88.77	5920.0	0.8	844.3	10.00	-0.87	844.2	TROTT 11 - PBHL REV 2
8	11054.0	90.00	88.77	5920.0	103.9	5637.0	0.00	0.00	5638.0	TROTT 11 - PBHL REV 2

ANNOTATIONS

MD	Inc	Azi	TVD	+N/-S	+E/-W	VSect	Departure	Annotation
100.0	0.00	0.00	100.0	0.0	0.0	0.0	0.0	BUILD 2"/100'
704.5	12.09	95.00	700.0	-5.5	63.3	63.2	63.5	HOLD 12.09° INC
804.5	12.09	95.00	797.8	-7.4	84.2	84.0	84.5	DROP 2"/100'
1320.7	1.77	89.64	1309.6	-12.0	146.2	145.9	146.7	HOLD VERTICAL
5377.9	1.77	89.64	5364.8	-11.2	271.7	271.5	272.2	KOP, BUILD 10"/100'
6260.1	90.00	88.77	5920.0	0.8	844.3	844.2	844.9	LP @ 90° INC
11054.0	90.00	88.77	5920.0	103.9	5637.0	5638.0	5638.8	TD at 11054.0' MD

DESIGN TARGET DETAILS

Name	TVD	+N/-S	+E/-W	Northing	Easting	Latitude	Longitude	Shape
TROTT 11 - LP REV 2	5920.0	0.8	844.3	1361368.32	3129198.30	40° 19' 27.949 N	105° 2' 11.846 W	Point
- plan hits target center								
TROTT 11 - PBHL REV 2	5920.0	103.9	5637.0	1361496.29	3133990.43	40° 19' 28.961 N	105° 1' 9.965 W	Point
- plan hits target center								
WAGGENER #8-44	6894.0	-760.0	5432.2	1360631.30	3133790.06	40° 19' 20.424 N	105° 1' 12.612 W	Circle (Radius: 50.0)
- plan misses target center by 1298.9usft at 10830.6usft MD (5920.0 TVD, 99.1 N, 5413.7 E)								

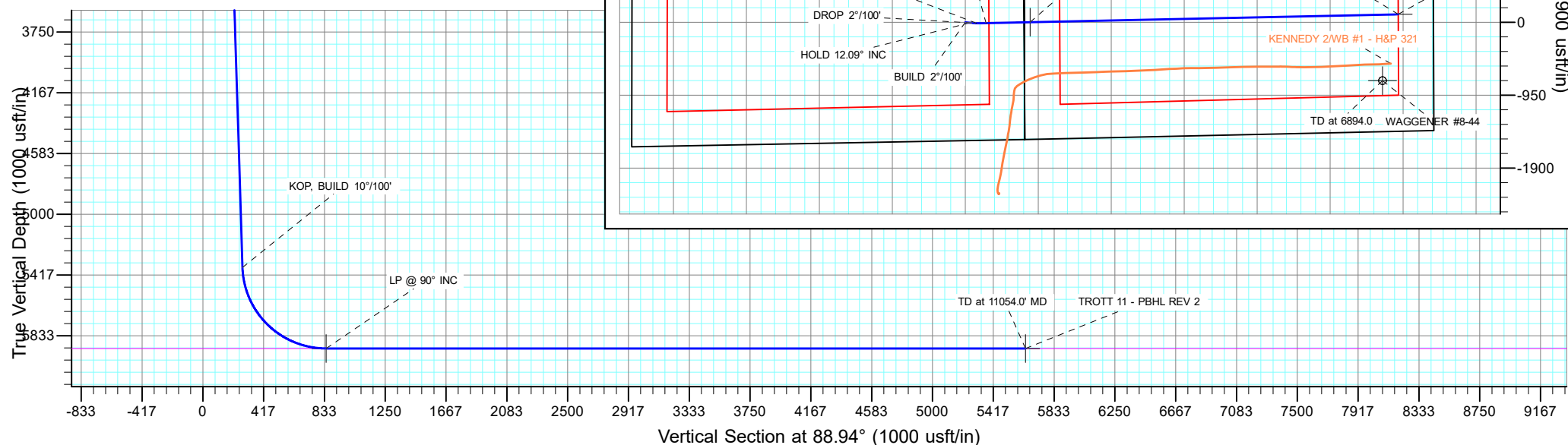
FORMATION TOP DETAILS

TVDPath	MDPath	Formation
2410.0	2421.7	PARKMAN
3010.0	3022.0	SUSSEX
3450.0	3462.2	SHANNON
5920.0	6260.1	NIORARA

PROJECT DETAILS: Weld County

Geodetic System: US State Plane 1983  
Datum: North American Datum 1983  
Ellipsoid: GRS 1980  
Zone: Colorado Northern Zone  
System Datum: Mean Sea Level

SHL:  
1542' FSL, 768' FEL  
Sec 7-T4N-R68W  
LP:  
1527' FSL, 75' FWL  
Sec 8-T4N-R68W  
BHL:  
1524' FSL, 460' FEL  
Sec 8-T4N-R68W



## Planning Report

<b>Database:</b>	EDT_32Bit_ODBC	<b>Local Co-ordinate Reference:</b>	Well TROTT 8E-10-11N
<b>Company:</b>	EXTRACTION OIL & GAS	<b>TVD Reference:</b>	KB 24' @ 5058.0usft
<b>Project:</b>	Weld County	<b>MD Reference:</b>	KB 24' @ 5058.0usft
<b>Site:</b>	Sec 7-T4N-R68W	<b>North Reference:</b>	True
<b>Well:</b>	TROTT 8E-10-11N	<b>Survey Calculation Method:</b>	Minimum Curvature
<b>Wellbore:</b>	ORIGINAL WELLBORE		
<b>Design:</b>	PROPOSAL 1		

<b>Project</b>	Weld County		
<b>Map System:</b>	US State Plane 1983	<b>System Datum:</b>	Mean Sea Level
<b>Geo Datum:</b>	North American Datum 1983		
<b>Map Zone:</b>	Colorado Northern Zone		

Site		Sec 7-T4N-R68W			
Site Position:		Northing:	1,359,838.99 usft	Latitude:	40° 19' 12.839 N
From:	Lat/Long	Easting:	3,129,136.57 usft	Longitude:	105° 2' 12.746 W
Position Uncertainty:	0.0 usft	Slot Radius:	13.200 in	Grid Convergence:	0.30 °

Well	TROTT 8E-10-11N					
Well Position	+N/-S	1,528.2 usft	Northing:	1,361,363.13 usft	Latitude:	40° 19' 27.941 N
	+E/-W	-774.6 usft	Easting:	3,128,354.03 usft	Longitude:	105° 2' 22.747 W
Position Uncertainty		0.0 usft	Wellhead Elevation:		Ground Level:	5,034.0 usft

<b>Wellbore</b>	ORIGINAL WELLBORE				
<b>Magnetics</b>	<b>Model Name</b>	<b>Sample Date</b>	<b>Declination (°)</b>	<b>Dip Angle (°)</b>	<b>Field Strength (nT)</b>
	IGRF2015	4/4/2017	8.37	66.76	52,345.19950331

<b>Design</b>	PROPOSAL 1			
<b>Audit Notes:</b>				
<b>Version:</b>	<b>Phase:</b>	PROTOTYPE	<b>Tie On Depth:</b>	0.0
<b>Vertical Section:</b>	<b>Depth From (TVD) (usft)</b>	<b>+N/-S (usft)</b>	<b>+E/-W (usft)</b>	<b>Direction (°)</b>
	0.0	0.0	0.0	88.94

<b>Plan Survey Tool Program</b>	<b>Date</b>	5/23/2017		
<b>Depth From (usft)</b>	<b>Depth To (usft)</b>	<b>Survey (Wellbore)</b>	<b>Tool Name</b>	<b>Remarks</b>
1	0.0	11,054.0	PROPOSAL 1 (ORIGINAL WELL	MWD OWSG
			OWSG MWD - Standard	

<b>Plan Sections</b>										
<b>Measured Depth (usft)</b>	<b>Inclination (°)</b>	<b>Azimuth (°)</b>	<b>Vertical Depth (usft)</b>	<b>+N/-S (usft)</b>	<b>+E/-W (usft)</b>	<b>Dogleg Rate (°/100ft)</b>	<b>Build Rate (°/100ft)</b>	<b>Turn Rate (°/100ft)</b>	<b>TFO (°)</b>	<b>Target</b>
0.0	0.00	0.00	0.0	0.0	0.0	0.00	0.00	0.00	0.00	
100.0	0.00	0.00	100.0	0.0	0.0	0.00	0.00	0.00	0.00	
704.5	12.09	95.00	700.0	-5.5	63.3	2.00	2.00	0.00	95.00	
804.5	12.09	95.00	797.8	-7.4	84.2	0.00	0.00	0.00	0.00	
1,320.7	1.77	89.64	1,309.6	-12.0	146.2	2.00	-2.00	-1.04	-179.08	
5,377.9	1.77	89.64	5,364.8	-11.2	271.7	0.00	0.00	0.00	0.00	
6,260.1	90.00	88.77	5,920.0	0.8	844.3	10.00	10.00	-0.10	-0.87	TROTT 11 - LP REV 2
11,054.0	90.00	88.77	5,920.0	103.9	5,637.0	0.00	0.00	0.00	0.00	TROTT 11 - PBHL RE

# Planning Report

<b>Database:</b>	EDT_32Bit_ODBC	<b>Local Co-ordinate Reference:</b>	Well TROTT 8E-10-11N
<b>Company:</b>	EXTRACTION OIL & GAS	<b>TVD Reference:</b>	KB 24' @ 5058.0usft
<b>Project:</b>	Weld County	<b>MD Reference:</b>	KB 24' @ 5058.0usft
<b>Site:</b>	Sec 7-T4N-R68W	<b>North Reference:</b>	True
<b>Well:</b>	TROTT 8E-10-11N	<b>Survey Calculation Method:</b>	Minimum Curvature
<b>Wellbore:</b>	ORIGINAL WELLBORE		
<b>Design:</b>	PROPOSAL 1		

Planned Survey									
Measured Depth (usft)	Inclination (°)	Azimuth (°)	Vertical Depth (usft)	+N/-S (usft)	+E/-W (usft)	Vertical Section (usft)	Dogleg Rate (°/100ft)	Build Rate (°/100ft)	Turn Rate (°/100ft)
0.0	0.00	0.00	0.0	0.0	0.0	0.0	0.00	0.00	0.00
100.0	0.00	0.00	100.0	0.0	0.0	0.0	0.00	0.00	0.00
<b>BUILD 2°/100'</b>									
200.0	2.00	95.00	200.0	-0.2	1.7	1.7	2.00	2.00	0.00
300.0	4.00	95.00	299.8	-0.6	7.0	6.9	2.00	2.00	0.00
400.0	6.00	95.00	399.5	-1.4	15.6	15.6	2.00	2.00	0.00
500.0	8.00	95.00	498.7	-2.4	27.8	27.7	2.00	2.00	0.00
600.0	10.00	95.00	597.5	-3.8	43.4	43.3	2.00	2.00	0.00
704.5	12.09	95.00	700.0	-5.5	63.3	63.2	2.00	2.00	0.00
<b>HOLD 12.09° INC</b>									
804.5	12.09	95.00	797.8	-7.4	84.2	84.0	0.00	0.00	0.00
<b>DROP 2°/100'</b>									
900.0	10.18	94.83	891.5	-8.9	102.5	102.4	2.00	-2.00	-0.18
1,000.0	8.18	94.56	990.2	-10.3	118.4	118.2	2.00	-2.00	-0.27
1,100.0	6.18	94.12	1,089.4	-11.2	130.9	130.7	2.00	-2.00	-0.44
1,200.0	4.18	93.26	1,189.0	-11.8	139.9	139.7	2.00	-2.00	-0.86
1,300.0	2.19	90.83	1,288.9	-12.0	145.5	145.2	2.00	-2.00	-2.43
1,320.7	1.77	89.64	1,309.6	-12.0	146.2	145.9	2.00	-1.99	-5.72
<b>HOLD VERTICAL</b>									
1,400.0	1.77	89.64	1,388.8	-12.0	148.6	148.4	0.00	0.00	0.00
1,500.0	1.77	89.64	1,488.8	-12.0	151.7	151.5	0.00	0.00	0.00
1,600.0	1.77	89.64	1,588.7	-12.0	154.8	154.6	0.00	0.00	0.00
1,700.0	1.77	89.64	1,688.7	-12.0	157.9	157.7	0.00	0.00	0.00
1,800.0	1.77	89.64	1,788.6	-11.9	161.0	160.8	0.00	0.00	0.00
1,900.0	1.77	89.64	1,888.6	-11.9	164.1	163.9	0.00	0.00	0.00
2,000.0	1.77	89.64	1,988.5	-11.9	167.2	166.9	0.00	0.00	0.00
2,100.0	1.77	89.64	2,088.5	-11.9	170.3	170.0	0.00	0.00	0.00
2,200.0	1.77	89.64	2,188.4	-11.9	173.4	173.1	0.00	0.00	0.00
2,300.0	1.77	89.64	2,288.4	-11.8	176.5	176.2	0.00	0.00	0.00
2,400.0	1.77	89.64	2,388.3	-11.8	179.6	179.3	0.00	0.00	0.00
2,421.7	1.77	89.64	2,410.0	-11.8	180.2	180.0	0.00	0.00	0.00
<b>PARKMAN</b>									
2,500.0	1.77	89.64	2,488.3	-11.8	182.7	182.4	0.00	0.00	0.00
2,600.0	1.77	89.64	2,588.2	-11.8	185.8	185.5	0.00	0.00	0.00
2,700.0	1.77	89.64	2,688.2	-11.8	188.9	188.6	0.00	0.00	0.00
2,800.0	1.77	89.64	2,788.1	-11.7	192.0	191.7	0.00	0.00	0.00
2,900.0	1.77	89.64	2,888.1	-11.7	195.0	194.8	0.00	0.00	0.00
3,000.0	1.77	89.64	2,988.0	-11.7	198.1	197.9	0.00	0.00	0.00
3,022.0	1.77	89.64	3,010.0	-11.7	198.8	198.6	0.00	0.00	0.00
<b>SUSSEX</b>									
3,100.0	1.77	89.64	3,088.0	-11.7	201.2	201.0	0.00	0.00	0.00
3,200.0	1.77	89.64	3,187.9	-11.7	204.3	204.1	0.00	0.00	0.00
3,300.0	1.77	89.64	3,287.9	-11.7	207.4	207.2	0.00	0.00	0.00
3,400.0	1.77	89.64	3,387.8	-11.6	210.5	210.3	0.00	0.00	0.00
3,462.2	1.77	89.64	3,450.0	-11.6	212.4	212.2	0.00	0.00	0.00
<b>SHANNON</b>									
3,500.0	1.77	89.64	3,487.8	-11.6	213.6	213.4	0.00	0.00	0.00
3,600.0	1.77	89.64	3,587.8	-11.6	216.7	216.5	0.00	0.00	0.00
3,700.0	1.77	89.64	3,687.7	-11.6	219.8	219.6	0.00	0.00	0.00
3,800.0	1.77	89.64	3,787.7	-11.6	222.9	222.6	0.00	0.00	0.00
3,900.0	1.77	89.64	3,887.6	-11.5	226.0	225.7	0.00	0.00	0.00
4,000.0	1.77	89.64	3,987.6	-11.5	229.1	228.8	0.00	0.00	0.00
4,100.0	1.77	89.64	4,087.5	-11.5	232.2	231.9	0.00	0.00	0.00

# Planning Report

<b>Database:</b>	EDT_32Bit_ODBC	<b>Local Co-ordinate Reference:</b>	Well TROTT 8E-10-11N
<b>Company:</b>	EXTRACTION OIL & GAS	<b>TVD Reference:</b>	KB 24' @ 5058.0usft
<b>Project:</b>	Weld County	<b>MD Reference:</b>	KB 24' @ 5058.0usft
<b>Site:</b>	Sec 7-T4N-R68W	<b>North Reference:</b>	True
<b>Well:</b>	TROTT 8E-10-11N	<b>Survey Calculation Method:</b>	Minimum Curvature
<b>Wellbore:</b>	ORIGINAL WELLBORE		
<b>Design:</b>	PROPOSAL 1		

Planned Survey									
Measured Depth (usft)	Inclination (°)	Azimuth (°)	Vertical Depth (usft)	+N/-S (usft)	+E/-W (usft)	Vertical Section (usft)	Dogleg Rate (°/100ft)	Build Rate (°/100ft)	Turn Rate (°/100ft)
4,200.0	1.77	89.64	4,187.5	-11.5	235.3	235.0	0.00	0.00	0.00
4,300.0	1.77	89.64	4,287.4	-11.5	238.4	238.1	0.00	0.00	0.00
4,400.0	1.77	89.64	4,387.4	-11.4	241.5	241.2	0.00	0.00	0.00
4,500.0	1.77	89.64	4,487.3	-11.4	244.6	244.3	0.00	0.00	0.00
4,600.0	1.77	89.64	4,587.3	-11.4	247.7	247.4	0.00	0.00	0.00
4,700.0	1.77	89.64	4,687.2	-11.4	250.7	250.5	0.00	0.00	0.00
4,800.0	1.77	89.64	4,787.2	-11.4	253.8	253.6	0.00	0.00	0.00
4,900.0	1.77	89.64	4,887.1	-11.3	256.9	256.7	0.00	0.00	0.00
5,000.0	1.77	89.64	4,987.1	-11.3	260.0	259.8	0.00	0.00	0.00
5,100.0	1.77	89.64	5,087.0	-11.3	263.1	262.9	0.00	0.00	0.00
5,200.0	1.77	89.64	5,187.0	-11.3	266.2	266.0	0.00	0.00	0.00
5,300.0	1.77	89.64	5,286.9	-11.3	269.3	269.1	0.00	0.00	0.00
5,377.9	1.77	89.64	5,364.8	-11.2	271.7	271.5	0.00	0.00	0.00
<b>KOP, BUILD 10°/100'</b>									
5,400.0	3.99	89.15	5,386.9	-11.2	272.8	272.6	10.00	10.00	-2.19
5,450.0	8.99	88.94	5,436.5	-11.1	278.5	278.2	10.00	10.00	-0.43
5,500.0	13.99	88.88	5,485.5	-10.9	288.4	288.2	10.00	10.00	-0.12
5,550.0	18.99	88.85	5,533.4	-10.7	302.6	302.4	10.00	10.00	-0.06
5,600.0	23.99	88.83	5,580.0	-10.3	320.9	320.7	10.00	10.00	-0.04
5,650.0	28.99	88.82	5,624.7	-9.8	343.2	343.0	10.00	10.00	-0.02
5,700.0	33.99	88.81	5,667.3	-9.3	369.3	369.1	10.00	10.00	-0.02
5,750.0	38.99	88.80	5,707.5	-8.7	399.0	398.8	10.00	10.00	-0.01
5,800.0	43.99	88.80	5,745.0	-8.0	432.1	431.9	10.00	10.00	-0.01
5,850.0	48.99	88.79	5,779.4	-7.2	468.4	468.2	10.00	10.00	-0.01
5,900.0	53.99	88.79	5,810.5	-6.4	507.5	507.3	10.00	10.00	-0.01
5,950.0	58.99	88.78	5,838.1	-5.5	549.1	548.9	10.00	10.00	-0.01
6,000.0	63.99	88.78	5,862.0	-4.6	593.0	592.9	10.00	10.00	-0.01
6,050.0	68.99	88.78	5,881.9	-3.6	638.9	638.7	10.00	10.00	-0.01
6,100.0	73.99	88.78	5,897.8	-2.6	686.3	686.1	10.00	10.00	-0.01
6,150.0	78.99	88.77	5,909.4	-1.5	734.8	734.7	10.00	10.00	0.00
6,200.0	83.99	88.77	5,916.8	-0.5	784.3	784.1	10.00	10.00	0.00
6,250.0	88.99	88.77	5,919.9	0.6	834.1	834.0	10.00	10.00	0.00
6,260.1	90.00	88.77	5,920.0	0.8	844.3	844.2	10.00	10.00	0.00
<b>LP @ 90° INC - NIOBRARA</b>									
6,300.0	90.00	88.77	5,920.0	1.7	884.1	884.0	0.00	0.00	0.00
6,400.0	90.00	88.77	5,920.0	3.8	984.1	984.0	0.00	0.00	0.00
6,500.0	90.00	88.77	5,920.0	6.0	1,084.1	1,084.0	0.00	0.00	0.00
6,600.0	90.00	88.77	5,920.0	8.1	1,184.1	1,184.0	0.00	0.00	0.00
6,700.0	90.00	88.77	5,920.0	10.3	1,284.0	1,284.0	0.00	0.00	0.00
6,800.0	90.00	88.77	5,920.0	12.4	1,384.0	1,384.0	0.00	0.00	0.00
6,900.0	90.00	88.77	5,920.0	14.6	1,484.0	1,484.0	0.00	0.00	0.00
7,000.0	90.00	88.77	5,920.0	16.7	1,584.0	1,584.0	0.00	0.00	0.00
7,100.0	90.00	88.77	5,920.0	18.9	1,684.0	1,684.0	0.00	0.00	0.00
7,200.0	90.00	88.77	5,920.0	21.0	1,783.9	1,784.0	0.00	0.00	0.00
7,300.0	90.00	88.77	5,920.0	23.2	1,883.9	1,884.0	0.00	0.00	0.00
7,400.0	90.00	88.77	5,920.0	25.3	1,983.9	1,984.0	0.00	0.00	0.00
7,500.0	90.00	88.77	5,920.0	27.5	2,083.9	2,084.0	0.00	0.00	0.00
7,600.0	90.00	88.77	5,920.0	29.6	2,183.8	2,184.0	0.00	0.00	0.00
7,700.0	90.00	88.77	5,920.0	31.8	2,283.8	2,284.0	0.00	0.00	0.00
7,800.0	90.00	88.77	5,920.0	33.9	2,383.8	2,384.0	0.00	0.00	0.00
7,900.0	90.00	88.77	5,920.0	36.1	2,483.8	2,484.0	0.00	0.00	0.00
8,000.0	90.00	88.77	5,920.0	38.2	2,583.7	2,584.0	0.00	0.00	0.00
8,100.0	90.00	88.77	5,920.0	40.4	2,683.7	2,684.0	0.00	0.00	0.00
8,200.0	90.00	88.77	5,920.0	42.5	2,783.7	2,784.0	0.00	0.00	0.00

## Planning Report

<b>Database:</b>	EDT_32Bit_ODBC	<b>Local Co-ordinate Reference:</b>	Well TROTT 8E-10-11N
<b>Company:</b>	EXTRACTION OIL & GAS	<b>TVD Reference:</b>	KB 24' @ 5058.0usft
<b>Project:</b>	Weld County	<b>MD Reference:</b>	KB 24' @ 5058.0usft
<b>Site:</b>	Sec 7-T4N-R68W	<b>North Reference:</b>	True
<b>Well:</b>	TROTT 8E-10-11N	<b>Survey Calculation Method:</b>	Minimum Curvature
<b>Wellbore:</b>	ORIGINAL WELLBORE		
<b>Design:</b>	PROPOSAL 1		

Planned Survey										
Measured Depth (usft)	Inclination (°)	Azimuth (°)	Vertical Depth (usft)	+N/-S (usft)	+E/-W (usft)	Vertical Section (usft)	Dogleg Rate (°/100ft)	Build Rate (°/100ft)	Turn Rate (°/100ft)	
8,300.0	90.00	88.77	5,920.0	44.7	2,883.7	2,884.0	0.00	0.00	0.00	
8,400.0	90.00	88.77	5,920.0	46.8	2,983.6	2,984.0	0.00	0.00	0.00	
8,500.0	90.00	88.77	5,920.0	49.0	3,083.6	3,084.0	0.00	0.00	0.00	
8,600.0	90.00	88.77	5,920.0	51.1	3,183.6	3,184.0	0.00	0.00	0.00	
8,700.0	90.00	88.77	5,920.0	53.3	3,283.6	3,284.0	0.00	0.00	0.00	
8,800.0	90.00	88.77	5,920.0	55.4	3,383.6	3,384.0	0.00	0.00	0.00	
8,900.0	90.00	88.77	5,920.0	57.6	3,483.5	3,484.0	0.00	0.00	0.00	
9,000.0	90.00	88.77	5,920.0	59.7	3,583.5	3,584.0	0.00	0.00	0.00	
9,100.0	90.00	88.77	5,920.0	61.9	3,683.5	3,684.0	0.00	0.00	0.00	
9,200.0	90.00	88.77	5,920.0	64.0	3,783.5	3,784.0	0.00	0.00	0.00	
9,300.0	90.00	88.77	5,920.0	66.2	3,883.4	3,884.0	0.00	0.00	0.00	
9,400.0	90.00	88.77	5,920.0	68.3	3,983.4	3,984.0	0.00	0.00	0.00	
9,500.0	90.00	88.77	5,920.0	70.5	4,083.4	4,084.0	0.00	0.00	0.00	
9,600.0	90.00	88.77	5,920.0	72.6	4,183.4	4,184.0	0.00	0.00	0.00	
9,700.0	90.00	88.77	5,920.0	74.8	4,283.3	4,284.0	0.00	0.00	0.00	
9,800.0	90.00	88.77	5,920.0	76.9	4,383.3	4,384.0	0.00	0.00	0.00	
9,900.0	90.00	88.77	5,920.0	79.1	4,483.3	4,484.0	0.00	0.00	0.00	
10,000.0	90.00	88.77	5,920.0	81.2	4,583.3	4,584.0	0.00	0.00	0.00	
10,100.0	90.00	88.77	5,920.0	83.4	4,683.3	4,684.0	0.00	0.00	0.00	
10,200.0	90.00	88.77	5,920.0	85.5	4,783.2	4,784.0	0.00	0.00	0.00	
10,300.0	90.00	88.77	5,920.0	87.7	4,883.2	4,884.0	0.00	0.00	0.00	
10,400.0	90.00	88.77	5,920.0	89.8	4,983.2	4,984.0	0.00	0.00	0.00	
10,500.0	90.00	88.77	5,920.0	92.0	5,083.2	5,084.0	0.00	0.00	0.00	
10,600.0	90.00	88.77	5,920.0	94.1	5,183.1	5,184.0	0.00	0.00	0.00	
10,700.0	90.00	88.77	5,920.0	96.3	5,283.1	5,284.0	0.00	0.00	0.00	
10,800.0	90.00	88.77	5,920.0	98.4	5,383.1	5,384.0	0.00	0.00	0.00	
10,900.0	90.00	88.77	5,920.0	100.6	5,483.1	5,484.0	0.00	0.00	0.00	
11,000.0	90.00	88.77	5,920.0	102.7	5,583.0	5,584.0	0.00	0.00	0.00	
11,054.0	90.00	88.77	5,920.0	103.9	5,637.0	5,638.0	0.00	0.00	0.00	
TD at 11054.0' MD										

Design Targets										
Target Name	Dip Angle (°)	Dip Dir. (°)	TVD (usft)	+N/-S (usft)	+E/-W (usft)	Northing (usft)	Easting (usft)	Latitude		Longitude
TROTT 11 - PBHL REV 1 - hit/miss target - Shape - Point	0.00	0.00	5,920.0	103.9	5,637.0	1,361,496.29	3,133,990.43	40° 19' 28.961 N		105° 1' 9.965 W
TROTT 11 - LP REV 2 - plan hits target center - Point	0.00	0.00	5,920.0	0.8	844.3	1,361,368.32	3,129,198.30	40° 19' 27.949 N		105° 2' 11.846 W
WAGGENER #8-44 - plan misses target center by 1298.9usft at 10830.6usft MD (5920.0 TVD, 99.1 N, 5413.7 E) - Circle (radius 50.0)	0.00	0.00	6,894.0	-760.0	5,432.2	1,360,631.31	3,133,790.06	40° 19' 20.424 N		105° 1' 12.612 W

## Planning Report

<b>Database:</b>	EDT_32Bit_ODBC	<b>Local Co-ordinate Reference:</b>	Well TROTT 8E-10-11N
<b>Company:</b>	EXTRACTION OIL & GAS	<b>TVD Reference:</b>	KB 24' @ 5058.0usft
<b>Project:</b>	Weld County	<b>MD Reference:</b>	KB 24' @ 5058.0usft
<b>Site:</b>	Sec 7-T4N-R68W	<b>North Reference:</b>	True
<b>Well:</b>	TROTT 8E-10-11N	<b>Survey Calculation Method:</b>	Minimum Curvature
<b>Wellbore:</b>	ORIGINAL WELLBORE		
<b>Design:</b>	PROPOSAL 1		

Formations					
Measured Depth (usft)	Vertical Depth (usft)	Name	Lithology	Dip (°)	Dip Direction (°)
2,421.7	2,410.0	PARKMAN			
3,022.0	3,010.0	SUSSEX			
3,462.2	3,450.0	SHANNON			
6,260.1	5,920.0	NIOBRARA			

Plan Annotations				
Measured Depth (usft)	Vertical Depth (usft)	Local Coordinates		Comment
		+N/-S (usft)	+E/-W (usft)	
100.0	100.0	0.0	0.0	BUILD 2°/100'
704.5	700.0	-5.5	63.3	HOLD 12.09° INC
804.5	797.8	-7.4	84.2	DROP 2°/100'
1,320.7	1,309.6	-12.0	146.2	HOLD VERTICAL
5,377.9	5,364.8	-11.2	271.7	KOP, BUILD 10°/100'
6,260.1	5,920.0	0.8	844.3	LP @ 90° INC
11,054.0	5,920.0	103.9	5,637.0	TD at 11054.0' MD