

EXTRACTION OIL & GAS

Weld County

Sec 7-T4N-R68W

TROTT 7W-10-8N

ORIGINAL WELLBORE

Plan: PROPOSAL 1

Standard Planning Report

23 May, 2017



WELL DETAILS: TROTT 7W-10-8N

+N/-S	+E/-W	Northing	Easting	5035.0	Latitude	Longitude	Slot
0.0	0.0	1361363.40	3128335.91	40° 19' 27.944 N	105° 2' 22.981 W		

SECTION DETAILS

Sec	MD	Inc	Azi	TVD	+N/-S	+E/-W	Dleg	TFace	VSect	Target
1	0.0	0.00	0.00	0.0	0.0	0.0	0.00	0.00	0.0	
2	200.0	0.00	0.00	200.0	0.0	0.0	0.00	0.00	0.0	
3	1056.4	17.13	84.44	1043.7	12.3	126.5	2.00	84.44	-126.2	
4	4571.9	17.13	84.44	4403.3	112.7	1156.9	0.00	0.00	-1154.4	
5	5428.3	0.00	0.00	5247.0	125.0	1283.4	2.00	180.00	-1280.6	
6	5528.3	0.00	0.00	5347.0	125.0	1283.4	0.00	0.00	-1280.6	
7	6428.4	90.00	269.52	5920.0	120.2	710.4	10.00	269.52	-707.9	TROTT 8 - LP REV 2
8	11000.9	90.00	269.42	5920.0	77.9	-3861.9	0.00	-88.71	3862.7	TROTT 8 - PBHL REV 2

ANNOTATIONS

MD	Inc	Azi	TVD	+N/-S	+E/-W	VSect	Departure	Annotation
200.0	0.00	0.00	200.0	0.0	0.0	0.0	0.0	BUILD 2°/100'
1056.4	17.13	84.44	1043.7	12.3	126.5	-126.2	127.1	HOLD 17.13° INC
4571.9	17.13	84.44	4403.3	112.7	1156.9	-1154.4	1162.4	DROP 2°/100'
5428.3	0.00	0.00	5247.0	125.0	1283.4	-1280.6	1289.5	HOLD VERTICAL
5528.3	0.00	0.00	5347.0	125.0	1283.4	-1280.6	1289.5	KOP, BUILD 10°/100'
6428.4	90.00	269.52	5920.0	120.2	710.4	-707.9	1862.5	LP @ 90° INC
11000.9	90.00	269.42	5920.0	77.9	-3861.9	3862.7	6435.0	TD at 11000.9' MD

DESIGN TARGET DETAILS

Name	TVD	+N/-S	+E/-W	Northing	Easting	Latitude	Longitude	Shape
TROTT 8 - LP REV 2	5920.0	120.2	710.4	1361487.32	3129045.70	40° 19' 29.132 N	105° 2' 13.808 W	Point
TROTT 8 - PBHL REV 2	5920.0	77.9	-3861.9	1361421.26	3124473.62	40° 19' 28.711 N	105° 3' 12.845 W	Point
- plan hits target center								

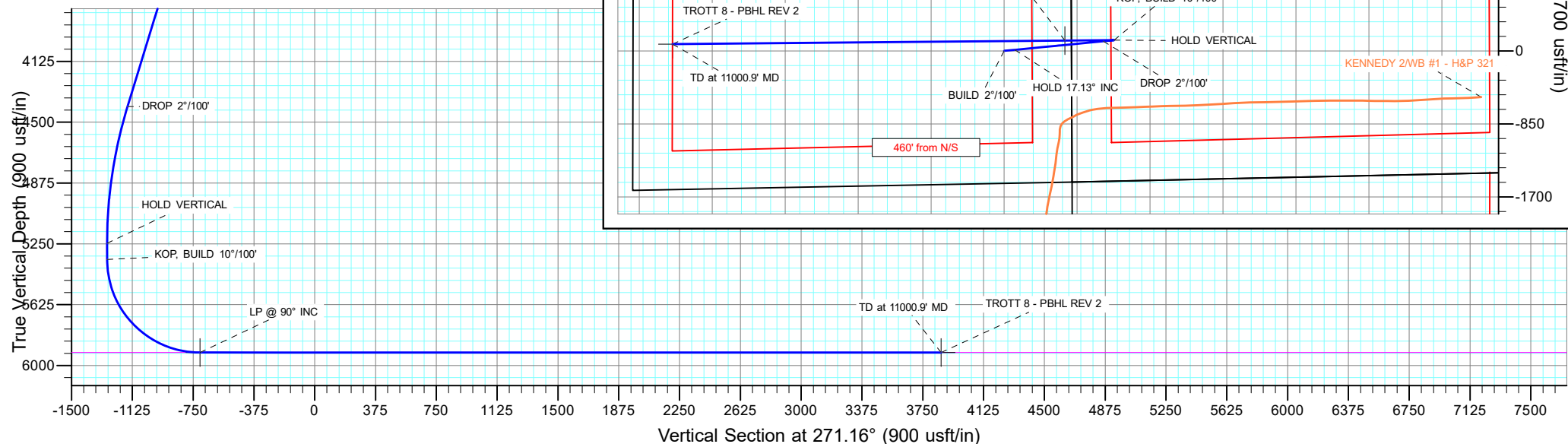
FORMATION TOP DETAILS

TVDPath	MDPath	Formation
2410.0	2486.1	PARKMAN
3010.0	3114.0	SUSSEX
3450.0	3574.4	SHANNON
5920.0	6428.4	NIOBARA

PROJECT DETAILS: Weld County

Geodetic System: US State Plane 1983
Datum: North American Datum 1983
Ellipsoid: GRS 1980
Zone: Colorado Northern Zone
System Datum: Mean Sea Level

SHL:
1543' FSL, 786' FEL
Sec 7-T4N-R68W
LP*
1650' FSL, 75' FEL
Sec 7-T4N-R68W
BHL:
1693' FSL, 460' FWL
Sec 7-T4N-R68W



Planning Report

Database:	EDT_32Bit_ODBC	Local Co-ordinate Reference:	Well TROTT 7W-10-8N
Company:	EXTRACTION OIL & GAS	TVD Reference:	KB 24' @ 5059.0usft
Project:	Weld County	MD Reference:	KB 24' @ 5059.0usft
Site:	Sec 7-T4N-R68W	North Reference:	True
Well:	TROTT 7W-10-8N	Survey Calculation Method:	Minimum Curvature
Wellbore:	ORIGINAL WELLBORE		
Design:	PROPOSAL 1		

Project	Weld County		
Map System:	US State Plane 1983	System Datum:	Mean Sea Level
Geo Datum:	North American Datum 1983		
Map Zone:	Colorado Northern Zone		

Site		Sec 7-T4N-R68W			
Site Position:		Northing:	1,359,838.99 usft	Latitude:	40° 19' 12.839 N
From:	Lat/Long	Easting:	3,129,136.57 usft	Longitude:	105° 2' 12.746 W
Position Uncertainty:	0.0 usft	Slot Radius:	13.200 in	Grid Convergence:	0.30 °

Well	TROTT 7W-10-8N					
Well Position	+N/-S	1,528.6 usft	Northing:	1,361,363.40 usft	Latitude:	40° 19' 27.944 N
	+E/-W	-792.7 usft	Easting:	3,128,335.91 usft	Longitude:	105° 2' 22.981 W
Position Uncertainty		0.0 usft	Wellhead Elevation:		Ground Level:	5,035.0 usft

Wellbore	ORIGINAL WELLBORE				
Magnetics	Model Name	Sample Date	Declination (°)	Dip Angle (°)	Field Strength (nT)
	IGRF2015	4/4/2017	8.37	66.76	52,345.18499108

Design	PROPOSAL 1			
Audit Notes:				
Version:	Phase:	PROTOTYPE	Tie On Depth:	0.0
Vertical Section:	Depth From (TVD) (usft)	+N/-S (usft)	+E/-W (usft)	Direction (°)
	0.0	0.0	0.0	271.16

Plan Survey Tool Program			Date	5/23/2017	
Depth From (usft)	Depth To (usft)	Survey (Wellbore)	Tool Name	Remarks	
1	0.0	11,000.9	PROPOSAL 1 (ORIGINAL WELL	MWD OWSG	
			OWSG MWD - Standard		

Plan Sections										
Measured Depth (usft)	Inclination (°)	Azimuth (°)	Vertical Depth (usft)	+N/-S (usft)	+E/-W (usft)	Dogleg Rate (°/100ft)	Build Rate (°/100ft)	Turn Rate (°/100ft)	TFO (°)	Target
0.0	0.00	0.00	0.0	0.0	0.0	0.00	0.00	0.00	0.00	
200.0	0.00	0.00	200.0	0.0	0.0	0.00	0.00	0.00	0.00	
1,056.4	17.13	84.44	1,043.7	12.3	126.5	2.00	2.00	0.00	84.44	
4,571.9	17.13	84.44	4,403.3	112.7	1,156.9	0.00	0.00	0.00	0.00	
5,428.3	0.00	0.00	5,247.0	125.0	1,283.4	2.00	-2.00	0.00	180.00	
5,528.3	0.00	0.00	5,347.0	125.0	1,283.4	0.00	0.00	0.00	0.00	
6,428.4	90.00	269.52	5,920.0	120.2	710.4	10.00	10.00	-10.05	269.52	TROTT 8 - LP REV 2
11,000.9	90.00	269.42	5,920.0	77.9	-3,861.9	0.00	0.00	0.00	-88.71	TROTT 8 - PBHL REV 1

Planning Report

Database:	EDT_32Bit_ODBC	Local Co-ordinate Reference:	Well TROTT 7W-10-8N
Company:	EXTRACTION OIL & GAS	TVD Reference:	KB 24' @ 5059.0usft
Project:	Weld County	MD Reference:	KB 24' @ 5059.0usft
Site:	Sec 7-T4N-R68W	North Reference:	True
Well:	TROTT 7W-10-8N	Survey Calculation Method:	Minimum Curvature
Wellbore:	ORIGINAL WELLBORE		
Design:	PROPOSAL 1		

Planned Survey									
Measured Depth (usft)	Inclination (°)	Azimuth (°)	Vertical Depth (usft)	+N-S (usft)	+E-W (usft)	Vertical Section (usft)	Dogleg Rate (°/100ft)	Build Rate (°/100ft)	Turn Rate (°/100ft)
0.0	0.00	0.00	0.0	0.0	0.0	0.0	0.00	0.00	0.00
100.0	0.00	0.00	100.0	0.0	0.0	0.0	0.00	0.00	0.00
200.0	0.00	0.00	200.0	0.0	0.0	0.0	0.00	0.00	0.00
BUILD 2°/100'									
300.0	2.00	84.44	300.0	0.2	1.7	-1.7	2.00	2.00	0.00
400.0	4.00	84.44	399.8	0.7	6.9	-6.9	2.00	2.00	0.00
500.0	6.00	84.44	499.5	1.5	15.6	-15.6	2.00	2.00	0.00
600.0	8.00	84.44	598.7	2.7	27.7	-27.7	2.00	2.00	0.00
700.0	10.00	84.44	697.5	4.2	43.3	-43.2	2.00	2.00	0.00
800.0	12.00	84.44	795.6	6.1	62.3	-62.2	2.00	2.00	0.00
900.0	14.00	84.44	893.1	8.2	84.7	-84.5	2.00	2.00	0.00
1,000.0	16.00	84.44	989.6	10.8	110.5	-110.2	2.00	2.00	0.00
1,056.4	17.13	84.44	1,043.7	12.3	126.5	-126.2	2.00	2.00	0.00
HOLD 17.13° INC									
1,100.0	17.13	84.44	1,085.4	13.6	139.2	-138.9	0.00	0.00	0.00
1,200.0	17.13	84.44	1,180.9	16.4	168.6	-168.2	0.00	0.00	0.00
1,300.0	17.13	84.44	1,276.5	19.3	197.9	-197.4	0.00	0.00	0.00
1,400.0	17.13	84.44	1,372.1	22.1	227.2	-226.7	0.00	0.00	0.00
1,500.0	17.13	84.44	1,467.6	25.0	256.5	-255.9	0.00	0.00	0.00
1,600.0	17.13	84.44	1,563.2	27.8	285.8	-285.2	0.00	0.00	0.00
1,700.0	17.13	84.44	1,658.8	30.7	315.1	-314.4	0.00	0.00	0.00
1,800.0	17.13	84.44	1,754.3	33.5	344.4	-343.7	0.00	0.00	0.00
1,900.0	17.13	84.44	1,849.9	36.4	373.7	-372.9	0.00	0.00	0.00
2,000.0	17.13	84.44	1,945.5	39.3	403.0	-402.2	0.00	0.00	0.00
2,100.0	17.13	84.44	2,041.0	42.1	432.4	-431.4	0.00	0.00	0.00
2,200.0	17.13	84.44	2,136.6	45.0	461.7	-460.7	0.00	0.00	0.00
2,300.0	17.13	84.44	2,232.1	47.8	491.0	-489.9	0.00	0.00	0.00
2,400.0	17.13	84.44	2,327.7	50.7	520.3	-519.2	0.00	0.00	0.00
2,486.1	17.13	84.44	2,410.0	53.1	545.5	-544.4	0.00	0.00	0.00
PARKMAN									
2,500.0	17.13	84.44	2,423.3	53.5	549.6	-548.4	0.00	0.00	0.00
2,600.0	17.13	84.44	2,518.8	56.4	578.9	-577.7	0.00	0.00	0.00
2,700.0	17.13	84.44	2,614.4	59.2	608.2	-606.9	0.00	0.00	0.00
2,800.0	17.13	84.44	2,710.0	62.1	637.5	-636.2	0.00	0.00	0.00
2,900.0	17.13	84.44	2,805.5	65.0	666.9	-665.4	0.00	0.00	0.00
3,000.0	17.13	84.44	2,901.1	67.8	696.2	-694.7	0.00	0.00	0.00
3,100.0	17.13	84.44	2,996.7	70.7	725.5	-723.9	0.00	0.00	0.00
3,114.0	17.13	84.44	3,010.0	71.1	729.6	-728.0	0.00	0.00	0.00
SUSSEX									
3,200.0	17.13	84.44	3,092.2	73.5	754.8	-753.2	0.00	0.00	0.00
3,300.0	17.13	84.44	3,187.8	76.4	784.1	-782.4	0.00	0.00	0.00
3,400.0	17.13	84.44	3,283.4	79.2	813.4	-811.7	0.00	0.00	0.00
3,500.0	17.13	84.44	3,378.9	82.1	842.7	-840.9	0.00	0.00	0.00
3,574.4	17.13	84.44	3,450.0	84.2	864.5	-862.7	0.00	0.00	0.00
SHANNON									
3,600.0	17.13	84.44	3,474.5	84.9	872.0	-870.2	0.00	0.00	0.00
3,700.0	17.13	84.44	3,570.1	87.8	901.4	-899.4	0.00	0.00	0.00
3,800.0	17.13	84.44	3,665.6	90.6	930.7	-928.7	0.00	0.00	0.00
3,900.0	17.13	84.44	3,761.2	93.5	960.0	-957.9	0.00	0.00	0.00
4,000.0	17.13	84.44	3,856.7	96.4	989.3	-987.2	0.00	0.00	0.00
4,100.0	17.13	84.44	3,952.3	99.2	1,018.6	-1,016.4	0.00	0.00	0.00
4,200.0	17.13	84.44	4,047.9	102.1	1,047.9	-1,045.7	0.00	0.00	0.00
4,300.0	17.13	84.44	4,143.4	104.9	1,077.2	-1,074.9	0.00	0.00	0.00

Planning Report

Database:	EDT_32Bit_ODBC	Local Co-ordinate Reference:	Well TROTT 7W-10-8N
Company:	EXTRACTION OIL & GAS	TVD Reference:	KB 24' @ 5059.0usft
Project:	Weld County	MD Reference:	KB 24' @ 5059.0usft
Site:	Sec 7-T4N-R68W	North Reference:	True
Well:	TROTT 7W-10-8N	Survey Calculation Method:	Minimum Curvature
Wellbore:	ORIGINAL WELLBORE		
Design:	PROPOSAL 1		

Planned Survey									
Measured Depth (usft)	Inclination (°)	Azimuth (°)	Vertical Depth (usft)	+N/-S (usft)	+E/-W (usft)	Vertical Section (usft)	Dogleg Rate (°/100ft)	Build Rate (°/100ft)	Turn Rate (°/100ft)
4,400.0	17.13	84.44	4,239.0	107.8	1,106.5	-1,104.2	0.00	0.00	0.00
4,500.0	17.13	84.44	4,334.6	110.6	1,135.9	-1,133.4	0.00	0.00	0.00
4,571.9	17.13	84.44	4,403.3	112.7	1,156.9	-1,154.4	0.00	0.00	0.00
DROP 2°/100'									
4,600.0	16.57	84.44	4,430.2	113.5	1,165.0	-1,162.5	2.00	-2.00	0.00
4,700.0	14.57	84.44	4,526.5	116.1	1,191.8	-1,189.2	2.00	-2.00	0.00
4,800.0	12.57	84.44	4,623.7	118.3	1,215.1	-1,212.5	2.00	-2.00	0.00
4,900.0	10.57	84.44	4,721.7	120.3	1,235.1	-1,232.4	2.00	-2.00	0.00
5,000.0	8.57	84.44	4,820.3	121.9	1,251.6	-1,248.9	2.00	-2.00	0.00
5,100.0	6.57	84.44	4,919.4	123.2	1,264.7	-1,262.0	2.00	-2.00	0.00
5,200.0	4.57	84.44	5,018.9	124.1	1,274.3	-1,271.6	2.00	-2.00	0.00
5,300.0	2.57	84.44	5,118.7	124.7	1,280.5	-1,277.8	2.00	-2.00	0.00
5,400.0	0.57	84.44	5,218.7	125.0	1,283.3	-1,280.5	2.00	-2.00	0.00
5,428.3	0.00	0.00	5,247.0	125.0	1,283.4	-1,280.6	2.00	-2.00	-298.18
HOLD VERTICAL									
5,500.0	0.00	0.00	5,318.7	125.0	1,283.4	-1,280.6	0.00	0.00	0.00
5,528.3	0.00	0.00	5,347.0	125.0	1,283.4	-1,280.6	0.00	0.00	0.00
KOP, BUILD 10°/100'									
5,550.0	2.17	269.52	5,368.7	125.0	1,283.0	-1,280.2	10.00	10.00	0.00
5,600.0	7.17	269.52	5,418.5	125.0	1,278.9	-1,276.1	10.00	10.00	0.00
5,650.0	12.17	269.52	5,467.8	124.9	1,270.5	-1,267.8	10.00	10.00	0.00
5,700.0	17.17	269.52	5,516.1	124.8	1,257.9	-1,255.1	10.00	10.00	0.00
5,750.0	22.17	269.52	5,563.2	124.6	1,241.1	-1,238.3	10.00	10.00	0.00
5,800.0	27.17	269.52	5,608.6	124.5	1,220.2	-1,217.4	10.00	10.00	0.00
5,850.0	32.17	269.52	5,652.0	124.3	1,195.5	-1,192.7	10.00	10.00	0.00
5,900.0	37.17	269.52	5,693.2	124.0	1,167.0	-1,164.3	10.00	10.00	0.00
5,950.0	42.17	269.52	5,731.6	123.8	1,135.1	-1,132.4	10.00	10.00	0.00
6,000.0	47.16	269.52	5,767.2	123.5	1,100.0	-1,097.3	10.00	10.00	0.00
6,050.0	52.16	269.52	5,799.5	123.2	1,061.9	-1,059.2	10.00	10.00	0.00
6,100.0	57.16	269.52	5,828.4	122.8	1,021.1	-1,018.4	10.00	10.00	0.00
6,150.0	62.16	269.52	5,853.7	122.5	978.0	-975.3	10.00	10.00	0.00
6,200.0	67.16	269.52	5,875.1	122.1	932.8	-930.1	10.00	10.00	0.00
6,250.0	72.16	269.52	5,892.5	121.7	885.9	-883.3	10.00	10.00	0.00
6,300.0	77.16	269.52	5,905.7	121.3	837.7	-835.1	10.00	10.00	0.00
6,350.0	82.16	269.52	5,914.6	120.9	788.6	-786.0	10.00	10.00	0.00
6,400.0	87.16	269.52	5,919.3	120.5	738.8	-736.2	10.00	10.00	0.00
6,428.4	90.00	269.52	5,920.0	120.2	710.4	-707.9	10.00	10.00	0.00
LP @ 90° INC - NIOBRARA									
6,500.0	90.00	269.52	5,920.0	119.6	638.8	-636.3	0.00	0.00	0.00
6,600.0	90.00	269.52	5,920.0	118.8	538.8	-536.3	0.00	0.00	0.00
6,700.0	90.00	269.52	5,920.0	118.0	438.8	-436.3	0.00	0.00	0.00
6,800.0	90.00	269.51	5,920.0	117.1	338.8	-336.4	0.00	0.00	0.00
6,900.0	90.00	269.51	5,920.0	116.3	238.8	-236.4	0.00	0.00	0.00
7,000.0	90.00	269.51	5,920.0	115.4	138.8	-136.5	0.00	0.00	0.00
7,100.0	90.00	269.51	5,920.0	114.6	38.8	-36.5	0.00	0.00	0.00
7,200.0	90.00	269.51	5,920.0	113.7	-61.2	63.4	0.00	0.00	0.00
7,300.0	90.00	269.50	5,920.0	112.8	-161.2	163.4	0.00	0.00	0.00
7,400.0	90.00	269.50	5,920.0	112.0	-261.2	263.4	0.00	0.00	0.00
7,500.0	90.00	269.50	5,920.0	111.1	-361.2	363.3	0.00	0.00	0.00
7,600.0	90.00	269.50	5,920.0	110.2	-461.2	463.3	0.00	0.00	0.00
7,700.0	90.00	269.49	5,920.0	109.3	-561.1	563.2	0.00	0.00	0.00
7,800.0	90.00	269.49	5,920.0	108.4	-661.1	663.2	0.00	0.00	0.00
7,900.0	90.00	269.49	5,920.0	107.5	-761.1	763.2	0.00	0.00	0.00

Planning Report

Database:	EDT_32Bit_ODBC	Local Co-ordinate Reference:	Well TROTT 7W-10-8N
Company:	EXTRACTION OIL & GAS	TVD Reference:	KB 24' @ 5059.0usft
Project:	Weld County	MD Reference:	KB 24' @ 5059.0usft
Site:	Sec 7-T4N-R68W	North Reference:	True
Well:	TROTT 7W-10-8N	Survey Calculation Method:	Minimum Curvature
Wellbore:	ORIGINAL WELLBORE		
Design:	PROPOSAL 1		

Planned Survey										
Measured Depth (usft)	Inclination (°)	Azimuth (°)	Vertical Depth (usft)	+N/-S (usft)	+E/-W (usft)	Vertical Section (usft)	Dogleg Rate (°/100ft)	Build Rate (°/100ft)	Turn Rate (°/100ft)	
8,000.0	90.00	269.49	5,920.0	106.7	-861.1	863.1	0.00	0.00	0.00	
8,100.0	90.00	269.48	5,920.0	105.8	-961.1	963.1	0.00	0.00	0.00	
8,200.0	90.00	269.48	5,920.0	104.9	-1,061.1	1,063.0	0.00	0.00	0.00	
8,300.0	90.00	269.48	5,920.0	103.9	-1,161.1	1,163.0	0.00	0.00	0.00	
8,400.0	90.00	269.48	5,920.0	103.0	-1,261.1	1,262.9	0.00	0.00	0.00	
8,500.0	90.00	269.47	5,920.0	102.1	-1,361.1	1,362.9	0.00	0.00	0.00	
8,600.0	90.00	269.47	5,920.0	101.2	-1,461.1	1,462.9	0.00	0.00	0.00	
8,700.0	90.00	269.47	5,920.0	100.3	-1,561.1	1,562.8	0.00	0.00	0.00	
8,800.0	90.00	269.47	5,920.0	99.4	-1,661.1	1,662.8	0.00	0.00	0.00	
8,900.0	90.00	269.47	5,920.0	98.4	-1,761.1	1,762.7	0.00	0.00	0.00	
9,000.0	90.00	269.46	5,920.0	97.5	-1,861.1	1,862.7	0.00	0.00	0.00	
9,100.0	90.00	269.46	5,920.0	96.5	-1,961.1	1,962.6	0.00	0.00	0.00	
9,200.0	90.00	269.46	5,920.0	95.6	-2,061.1	2,062.6	0.00	0.00	0.00	
9,300.0	90.00	269.46	5,920.0	94.7	-2,161.1	2,162.6	0.00	0.00	0.00	
9,400.0	90.00	269.45	5,920.0	93.7	-2,261.1	2,262.5	0.00	0.00	0.00	
9,500.0	90.00	269.45	5,920.0	92.7	-2,361.1	2,362.5	0.00	0.00	0.00	
9,600.0	90.00	269.45	5,920.0	91.8	-2,461.1	2,462.4	0.00	0.00	0.00	
9,700.0	90.00	269.45	5,920.0	90.8	-2,561.1	2,562.4	0.00	0.00	0.00	
9,800.0	90.00	269.44	5,920.0	89.9	-2,661.1	2,662.3	0.00	0.00	0.00	
9,900.0	90.00	269.44	5,920.0	88.9	-2,761.1	2,762.3	0.00	0.00	0.00	
10,000.0	90.00	269.44	5,920.0	87.9	-2,861.0	2,862.2	0.00	0.00	0.00	
10,100.0	90.00	269.44	5,920.0	86.9	-2,961.0	2,962.2	0.00	0.00	0.00	
10,200.0	90.00	269.43	5,920.0	85.9	-3,061.0	3,062.2	0.00	0.00	0.00	
10,300.0	90.00	269.43	5,920.0	85.0	-3,161.0	3,162.1	0.00	0.00	0.00	
10,400.0	90.00	269.43	5,920.0	84.0	-3,261.0	3,262.1	0.00	0.00	0.00	
10,500.0	90.00	269.43	5,920.0	83.0	-3,361.0	3,362.0	0.00	0.00	0.00	
10,600.0	90.00	269.43	5,920.0	82.0	-3,461.0	3,462.0	0.00	0.00	0.00	
10,700.0	90.00	269.42	5,920.0	81.0	-3,561.0	3,561.9	0.00	0.00	0.00	
10,800.0	90.00	269.42	5,920.0	79.9	-3,661.0	3,661.9	0.00	0.00	0.00	
10,900.0	90.00	269.42	5,920.0	78.9	-3,761.0	3,761.8	0.00	0.00	0.00	
11,000.9	90.00	269.42	5,920.0	77.9	-3,861.9	3,862.7	0.00	0.00	0.00	
TD at 11000.9' MD										

Design Targets										
Target Name	Dip Angle (°)	Dip Dir. (°)	TVD (usft)	+N/-S (usft)	+E/-W (usft)	Northing (usft)	Easting (usft)	Latitude		Longitude
TROTT 8 - PBHL REV 2	0.00	0.00	5,920.0	77.9	-3,861.9	1,361,421.26	3,124,473.62	40° 19' 28.711 N		105° 3' 12.845 W
- hit/miss target										
- Shape										
- Point										
TROTT 8 - LP REV 2	0.00	0.00	5,920.0	120.2	710.4	1,361,487.32	3,129,045.70	40° 19' 29.132 N		105° 2' 13.808 W
- plan hits target center										
- Point										

Planning Report

Database:	EDT_32Bit_ODBC	Local Co-ordinate Reference:	Well TROTT 7W-10-8N
Company:	EXTRACTION OIL & GAS	TVD Reference:	KB 24' @ 5059.0usft
Project:	Weld County	MD Reference:	KB 24' @ 5059.0usft
Site:	Sec 7-T4N-R68W	North Reference:	True
Well:	TROTT 7W-10-8N	Survey Calculation Method:	Minimum Curvature
Wellbore:	ORIGINAL WELLBORE		
Design:	PROPOSAL 1		

Formations					
Measured Depth (usft)	Vertical Depth (usft)	Name	Lithology	Dip (°)	Dip Direction (°)
2,486.1	2,410.0	PARKMAN			
3,114.0	3,010.0	SUSSEX			
3,574.4	3,450.0	SHANNON			
6,428.4	5,920.0	NIOBRARA			

Plan Annotations				
Measured Depth (usft)	Vertical Depth (usft)	Local Coordinates		Comment
		+N/-S (usft)	+E/-W (usft)	
200.0	200.0	0.0	0.0	BUILD 2°/100'
1,056.4	1,043.7	12.3	126.5	HOLD 17.13° INC
4,571.9	4,403.3	112.7	1,156.9	DROP 2°/100'
5,428.3	5,247.0	125.0	1,283.4	HOLD VERTICAL
5,528.3	5,347.0	125.0	1,283.4	KOP, BUILD 10°/100'
6,428.4	5,920.0	120.2	710.4	LP @ 90° INC
11,000.9	5,920.0	77.9	-3,861.9	TD at 11000.9' MD