



Lat40°, Inc. 6250 W. 10th Street, Unit 2, Greeley, CO 970-515-5294

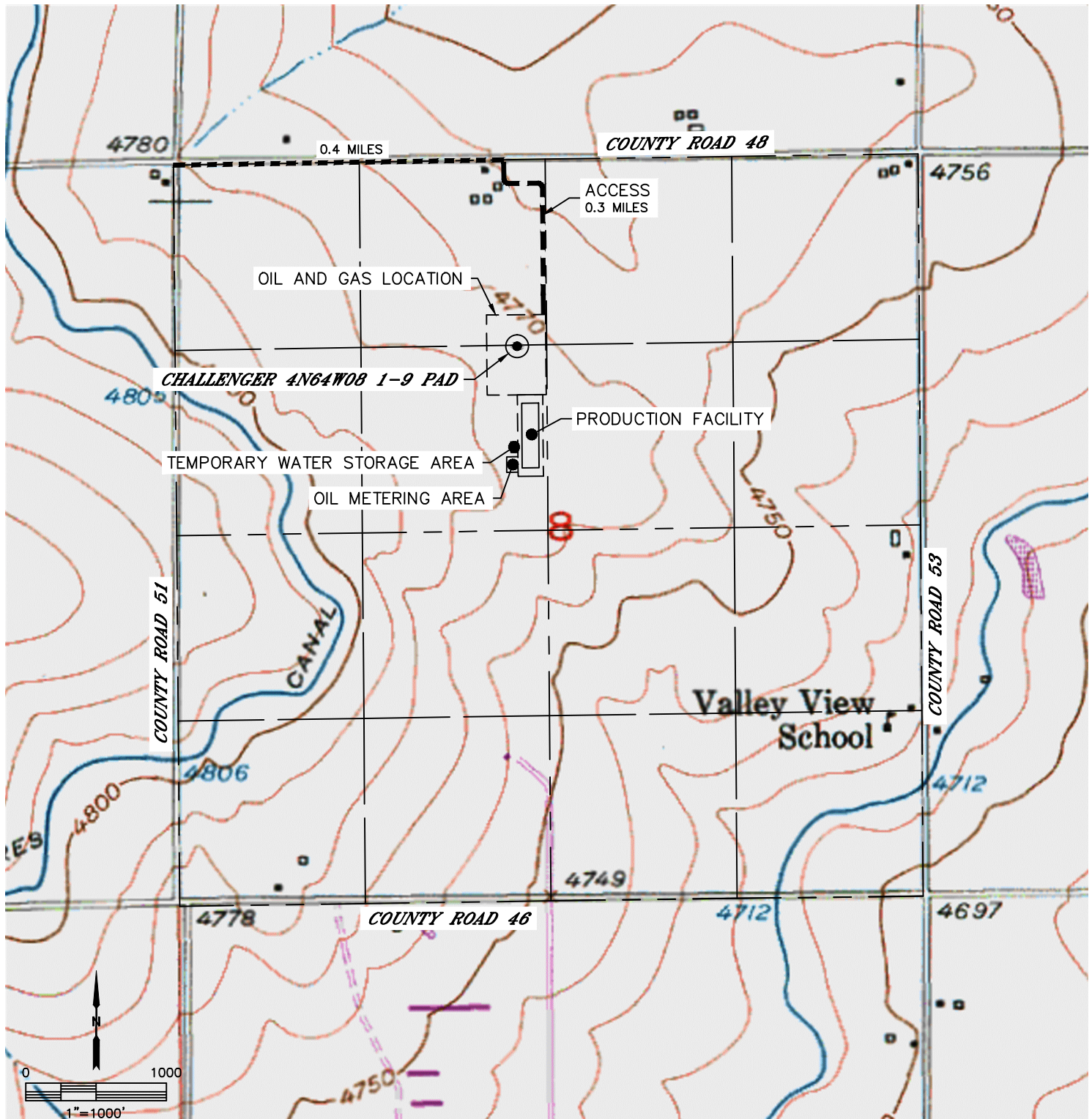
ACCESS ROAD MAP

CHALLENGER 4N64W08 1-9 PAD

SECTION: 8
TOWNSHIP: 4N
RANGE: 64W
6TH. P.M.
WELD COUNTY, CO

DRIVING DIRECTIONS TO CHALLENGER 4N64W08 1-9 PAD

FROM THE INTERSECTION OF COUNTY ROAD 51 AND COUNTY ROAD 48 GO EAST ON COUNTRY ROAD 48 FOR 0.4 MILES TO AN ACCESS TO THE SOUTH. THENCE SOUTH AND EAST AROUND AN EXISTING POND THEN SOUTH ALONG AN EXISTING FENCE LINE FOR 0.3 MILES TO THE PROPOSED WELL PAD AND PRODUCTION FACILITY.





Lat40°, Inc. 6250 W. 10th Street, Unit 2, Greeley, CO 970-515-5294

ACCESS ROAD MAP

CHALLENGER 4N64W08 1-9 PAD

SECTION: 8
TOWNSHIP: 4N
RANGE: 64W
6TH. P.M.
WELD COUNTY, CO

