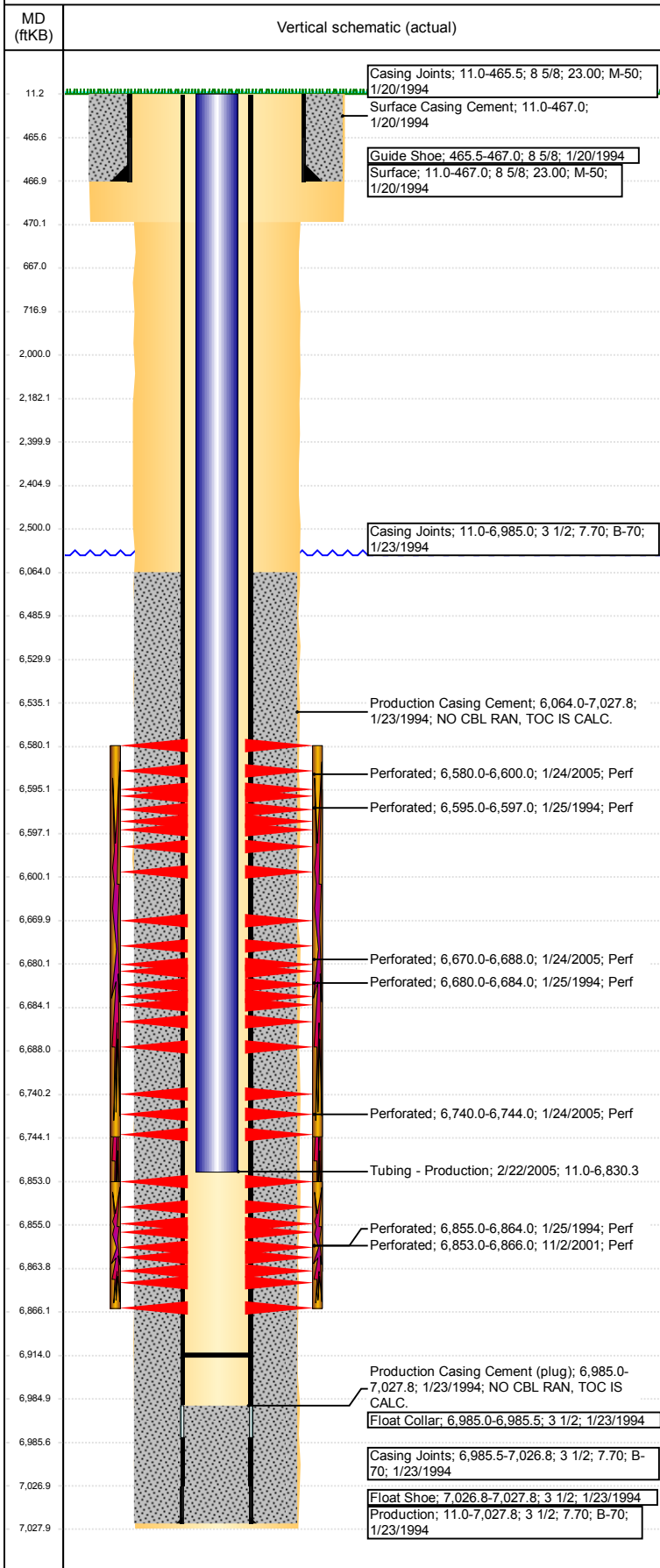


Well Name: **SITZMAN 04-0714**

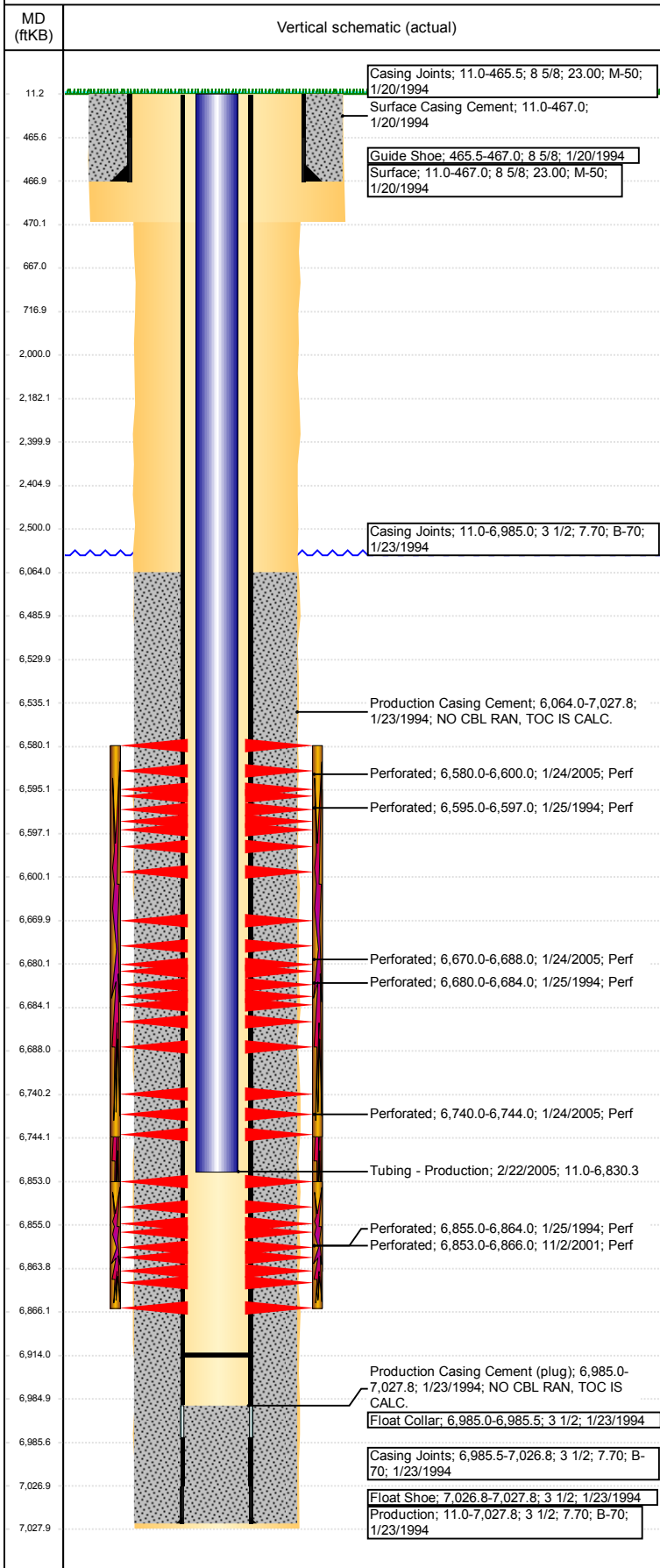
VERTICAL - ORIGINAL HOLE, 7/19/2017 4:57:22 PM



Well Header							
API	05-123-17895	Business Unit	DJ BASIN				
Original KB Elevation (ft)	4,706	KB - GL / MSL (ftKB)	11.00				
District	15	Spud Date	1/19/1994				
Well Config	VERTICAL						
Comment	CIBP @6914 02/05						
NO CBL RAN, TOC IS CALCULATED.							
WELLHEAD IS 3000#							
Directions To Well							
Congressional Location							
Quarter 3	Quarter 4	Section	Township	Twntshp N/S Dir	Range E/W Dir		
SW	NE	4	4	N	64 W		
Bottom Hole Location							
North-South Distance (ft)		From N or S Line		East-West Distance (ft)			
				From E or W Line			
Plug Back Total Depths							
Date	Depth (ftKB)	Method	Com				
1/23/1994	6,985.0	CASING TALLY	TOP OF LATCH DOWN BAFFLE				
1/25/1994	6,946.0	CASED HOLE LOG	DEPTH LOGGER ON CCL/GR LOG				
1/28/1994	6,975.0	TAG	CLEAN OUT				
11/1/2001	6,910.0	TAG	CLEAN OUT				
2/22/2005	6,914.0	TAG	DRILL CIBP AND PUSH TO 6914'				
Wellbore Sections							
Section Des	Size (in)	Act Top, MD (ftKB)	Act Btm, MD (ftKB)				
SURFACE	12 1/4	11	470				
PRODUCTION	7 7/8	470	7,028				
Zone Statuses							
Zone Name	Status Date	Status	Fluid Type	Job	Prod Method		
CODELL	2/7/1994	PR		DRILLING/CO...			
CODELL	11/9/2001	PR		RE-FRAC, 10/3...			
CODELL	1/24/2005	SI		RE-FRAC, 1/19...			
CODELL	2/23/2005	PR		COMMINGLE...			
NIOBRARA	2/7/1994	PR		DRILLING/CO...			
NIOBRARA	2/1/2005	PR		RE-FRAC, 1/19...			
NIOBRARA	2/23/2005	PR		COMMINGLE...			
Casing Strings							
Surface, 467.0ftKB							
Casing Description	Run Date	OD (in)	Wt/Len (l...)	Grade	Top, MD (ft...)	MD (ftKB)	
Surface	1/20/1994	8 5/8	23.00	M-50	11.0	467.0	
Production, 7,027.8ftKB							
Casing Description	Run Date	OD (in)	Wt/Len (l...)	Grade	Top, MD (ft...)	MD (ftKB)	
Production	1/23/1994	3 1/2	7.70	B-70	11.0	7,027.8	
Cement							
Description	Top Depth (ftKB)	Bottom Depth (ftKB)					
Surface Casing Cement	11.0	467.0					
Production Casing Cement	6,064.0	7,027.8					
Dump Bail	6,486.0	6,530.0					
Squeeze	2,000.0	2,500.0					
Balance Plug	11.0	667.0					
Cement Plug	667.0	717.0					
Cement Plug	2,182.0	2,400.0					
Cement Plug	2,405.0	2,500.0					
Tubing Strings							
Tubing Description	Run Date	String...	ID (in)	Wt (lb/ft)	Grade	Len (ft)	Set De...
Tubing - Production	2/22/2005	2 1/16		3.75	J-55	6,819.33	
Other In Hole							
Run Date	Des	OD (in)	Top (ftKB)	Btm (ftKB)			
7/17/2017	Cement Retainer	3.99	2,400.0	2,405.0			
7/17/2017	Cast Iron Bridge Plug	3.99	6,530.0	6,535.0			

Well Name: **SITZMAN 04-0714**

VERTICAL - ORIGINAL HOLE, 7/19/2017 4:57:23 PM



Logs			
Date	Type	Top, MD (ftKB)	Btm, MD (ftKB)
1/23/1994	COMPENSATED DENSITY	2,690.0	7,026.0
1/23/1994	INDUCTION	467.0	7,026.0
1/25/1994	GAMMA RAY	6,398.0	6,935.0
2/8/2017	GYRO	0.0	6,700.0

Perforation Data					
Linked Zone	Bnch/St g	Sum of Entered Shot Total	Top (ftKB)	Btm (ftKB)	Date
CODELL, ORIGINAL HOLE		0	2,500.00	2,500.00	7/17/2017
NIOBRARA, ORIGINAL HOLE	A	120	6,580.00	6,600.00	1/24/2005
NIOBRARA, ORIGINAL HOLE		2	6,595.00	6,597.00	1/25/1994
NIOBRARA, ORIGINAL HOLE	B	106	6,670.00	6,688.00	1/24/2005
NIOBRARA, ORIGINAL HOLE		4	6,680.00	6,684.00	1/25/1994
NIOBRARA, ORIGINAL HOLE	C	24	6,740.00	6,744.00	1/24/2005
CODELL, ORIGINAL HOLE		52	6,853.00	6,866.00	11/2/2001
CODELL, ORIGINAL HOLE		9	6,855.00	6,864.00	1/25/1994
<b>Total (Sum)</b>		<b>317</b>			

Stimulation Intervals		
Start Date	Primary Job Type	
1/26/1994	DRILLING/COMPLETION - ORIGINAL	
Technical Result	Tech Result Details	Tech Result Note
Success		
Comment		
LIMITED ENTRY FRAC		
Start Date	Primary Job Type	
11/8/2001	RE-FRAC	
Technical Result	Tech Result Details	Tech Result Note
Success		
Comment		
CODELL REFRAC		
Start Date	Primary Job Type	
1/31/2005	RE-FRAC	
Technical Result	Tech Result Details	Tech Result Note
Success		
Comment		
NIOBRARA REFRAC		