

Inspection Photos

7/20/2017

Operator: PDC ENERGY INC - 69175

Location ID: 323128

Inspection Doc. Number: 682502488

Weld County, CO

Aaron Trujillo

Reclamation Specialist

COGCC



COLORADO
Oil & Gas Conservation
Commission
Department of Natural Resources

Inspection Photos
Operator: PDC ENERGY INC - 69175
Location ID: 323128

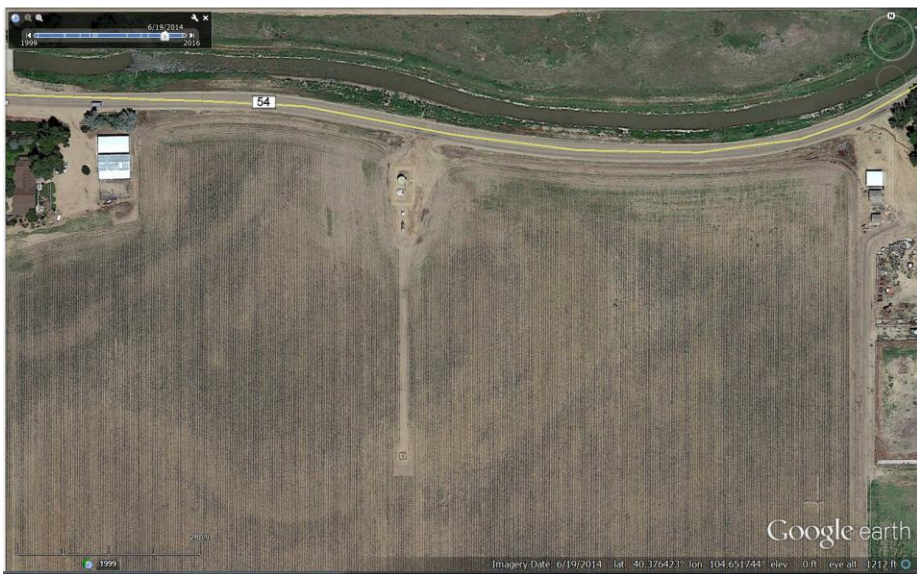


Photo 1: 2014 aerial imagery. Photo shows well and tank battery prior to plugging and abandonment.



Photo 2: 2015 aerial imagery. Photo shows equipment has been removed and the extent of the disturbance due to plugging and abandonment.

Inspection Photos
Operator: PDC ENERGY INC - 69175
Location ID: 323128



Photo 3: Photo taken from the northeast corner of the tank battery location, facing south. Photo shows tank battery location has not been reclaimed.



Photo 4: Photo taken from the northeast corner of the tank battery location, facing west. Photo shows tank battery location has not been reclaimed.

Inspection Photos
Operator: PDC ENERGY INC - 69175
Location ID: 323128



Photo 5: Photo taken from the tank battery location. Inspector made attempts to conduct a soil pit to test for compaction concerns. Inspector was unable to dig more than a couple inches. Location has not had compaction alleviation.



Photo 6: Photo taken from the west end of the battery location, facing east. Photo shows crop over the disturbance area is significantly stunted when compared to the reference (photo 14). Disturbed areas will require additional reclamation work conducted.

Inspection Photos
Operator: PDC ENERGY INC - 69175
Location ID: 323128



Photo 7: Photo taken from the well location. Photo shows crop at well appears uniform. 6 foot measuring stick for reference.

Inspection Photos
Operator: PDC ENERGY INC - 69175
Location ID: 323128

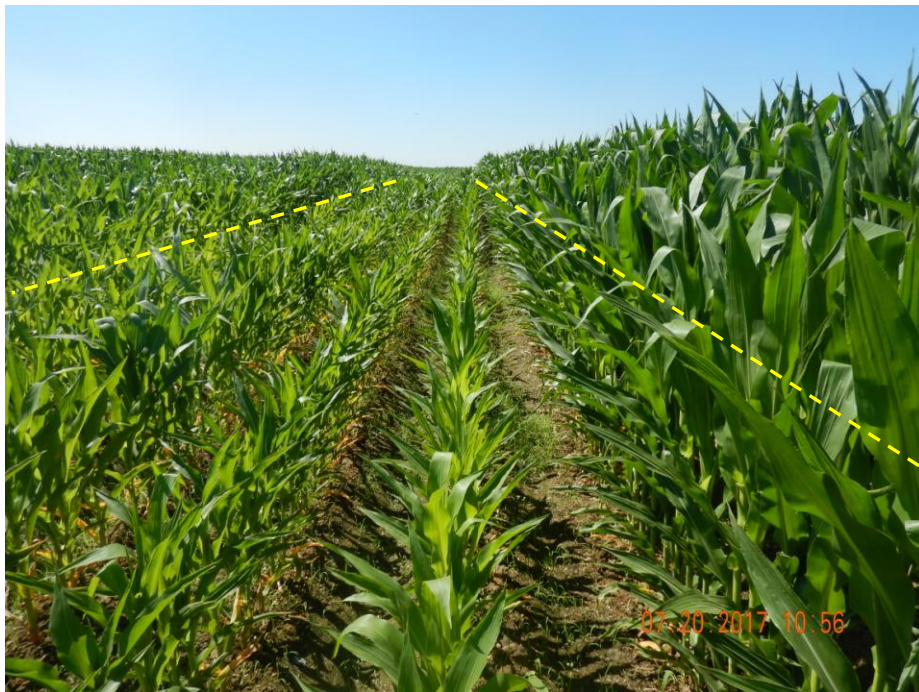


Photo 8: Photo taken from the access road, facing south. Photo shows vegetation along access road (yellow line) is stunted when compared to that or the reference area.



Photo 9: Photo taken from the well location, facing north. Photo shows crop vegetation over the well location is stunted when compared to the reference area.

Inspection Photos
Operator: PDC ENERGY INC - 69175
Location ID: 323128



Photo 10: Photo taken from the well location, facing east. Photo shows crop vegetation over the well location is stunted when compared to the reference area.



Photo 11: Photo taken from the well location, facing south. Photo shows crop vegetation over the well location is stunted when compared to the reference area.

Inspection Photos
Operator: PDC ENERGY INC - 69175
Location ID: 323128



Photo 12: Photo taken from the well location, facing west. Photo shows crop vegetation over the well location is stunted when compared to the reference area.



Photo 13: Photo shows of crop vegetation over the well location compared to a 6 foot measuring stick. Vegetation over the well location was ~2 feet in height.

Inspection Photos
Operator: PDC ENERGY INC - 69175
Location ID: 323128

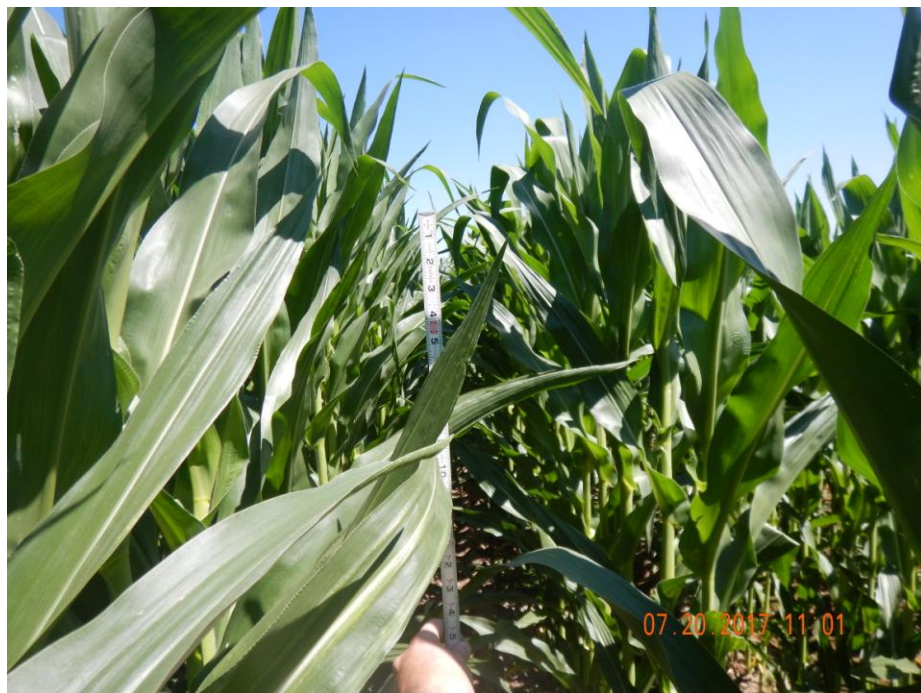


Photo 14: Photo taken from the reference area. 6 foot measuring stick for reference. Crop over the reference area >6 feet in height



Photo 15: Photo taken from the well location, facing north. Photo shows crop vegetation over the access road is stunted when compared to that of the reference area.