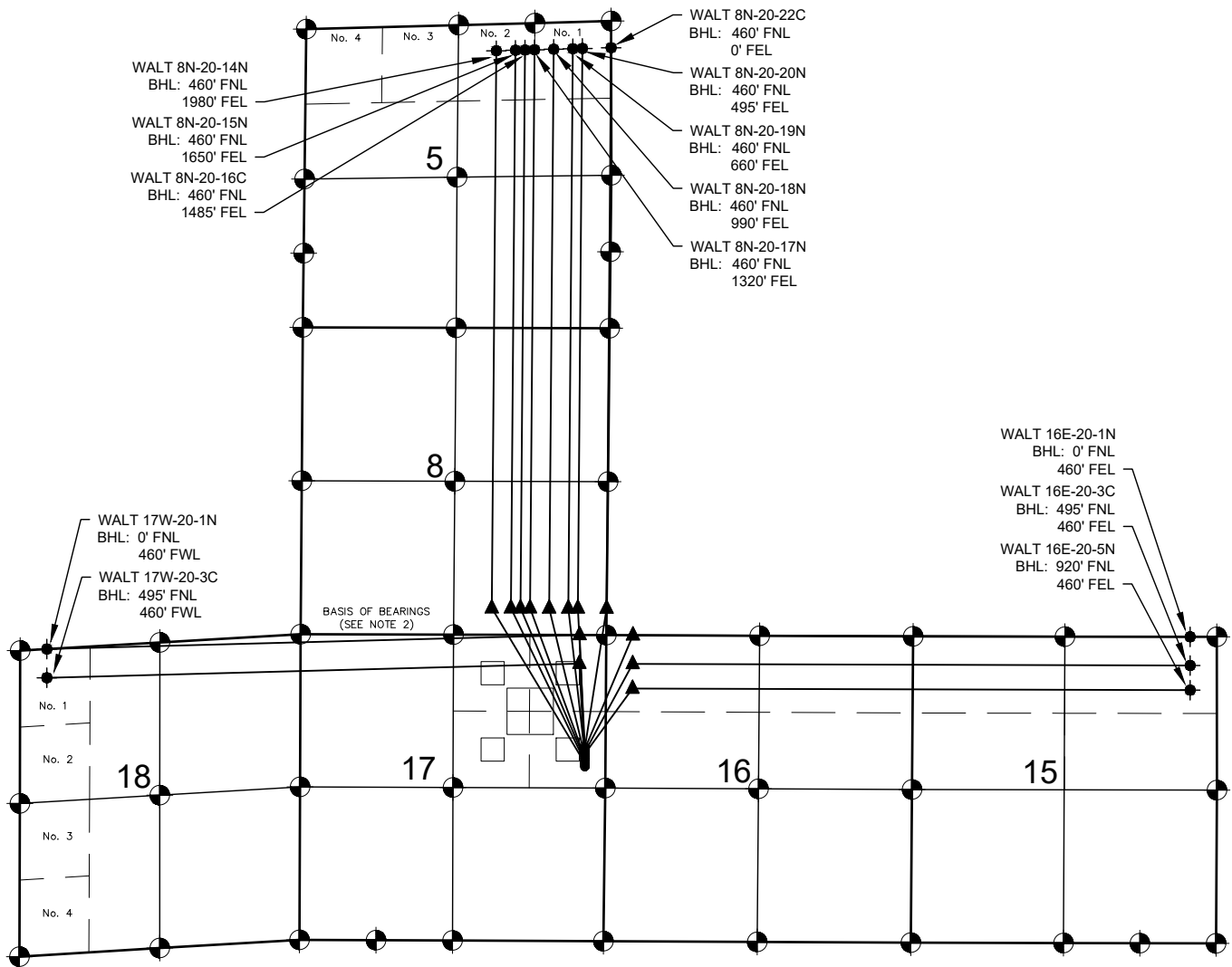


WALT 17-E PAD MULTI-WELL PLAN

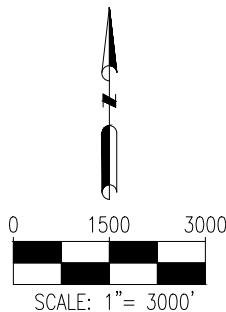


LEGEND

- = EXISTING MONUMENT
- = CALCULATED POSITION
- ◆ = PROPOSED WELL
- ◆ = EXISTING WELL
- ▲ = BOTTOM HOLE
- ▲ = LANDING POINT
- BHL = BOTTOM HOLE LOCATION

NOTES:

- THIS FIELD SURVEY CONFORMS TO THE MINIMUM STANDARDS SET BY THE C.O.G.C.C., RULE NO. 215
- BEARINGS ARE BASED ON THE ASSUMPTION THAT THE NORTH LINE OF THE NORTHWEST QUARTER OF SECTION 17, BEARS S89°50'55"E BETWEEN THE MONUMENTS SHOWN HEREON.
- ALL DISTANCES AND BEARINGS SHOWN HEREON ARE GROUND VALUES AS GPS MEASURED IN THE FIELD, WITH TIES TO WELLS MEASURED PERPENDICULAR TO SECTION LINES. THIS LOW DISTORTION PROJECTION (LDP) IS BASED ON THE NORTH AMERICAN DATUM OF 1983, U.S. SURVEY FOOT WITH A LATITUDE ORIGIN OF 40.566967°N, A CENTRAL MERIDIAN LONGITUDE OF 104.888823°W, AND A SCALE FACTOR ON THE CENTRAL MERIDIAN OF 1.000237 (EXACT). THE LDP BASIS OF BEARINGS IS GEODETIC NORTH.
- FIELD VERIFICATION OF MONUMENTS COMPLETED WITHIN 1 YEAR OF SIGNATURE DATE.



NOTES:

- WALT 8N-20-22C TO BE AT 1933' FNL & 353' FEL.
BOTTOM HOLE AT 460' FNL & 0' FEL, SEC. 5.
- WALT 16E-20-1N TO BE AT 1961' FNL & 353' FEL.
BOTTOM HOLE AT 0' FNL & 460' FEL, SEC. 15.
- WALT 8N-20-20N TO BE AT 1989' FNL & 353' FEL.
BOTTOM HOLE AT 460' FNL & 495' FEL, SEC. 5.
- WALT 16E-20-3C TO BE AT 2017' FNL & 354' FEL.
BOTTOM HOLE AT 495' FNL & 460' FEL, SEC. 15.
- WALT 16E-20-5N TO BE AT 2045' FNL & 353' FEL.
BOTTOM HOLE AT 920' FNL & 460' FEL, SEC. 15.
- WALT 8N-20-19N TO BE AT 2073' FNL & 353' FEL.
BOTTOM HOLE AT 460' FNL & 660' FEL, SEC. 5.
- WALT 8N-20-18N TO BE AT 2101' FNL & 353' FEL.
BOTTOM HOLE AT 460' FNL & 990' FEL, SEC. 5.
- WALT 8N-20-17N TO BE AT 2129' FNL & 353' FEL.
BOTTOM HOLE AT 460' FNL & 1320' FEL, SEC. 5.
- WALT 8N-20-16C TO BE AT 2157' FNL & 353' FEL.
BOTTOM HOLE AT 460' FNL & 1465' FEL, SEC. 5.
- WALT 8N-20-15N TO BE AT 2185' FNL & 354' FEL.
BOTTOM HOLE AT 460' FNL & 1650' FEL, SEC. 5.
- WALT 8N-20-14N TO BE AT 2213' FNL & 354' FEL.
BOTTOM HOLE AT 460' FNL & 1980' FEL, SEC. 5.
- WALT 17W-20-1N TO BE AT 2241' FNL & 354' FEL.
BOTTOM HOLE AT 0' FNL & 460' FWL, SEC. 18.
- WALT 17W-20-3C TO BE AT 2269' FNL & 354' FEL.
BOTTOM HOLE AT 495' FNL & 460' FWL, SEC. 18.