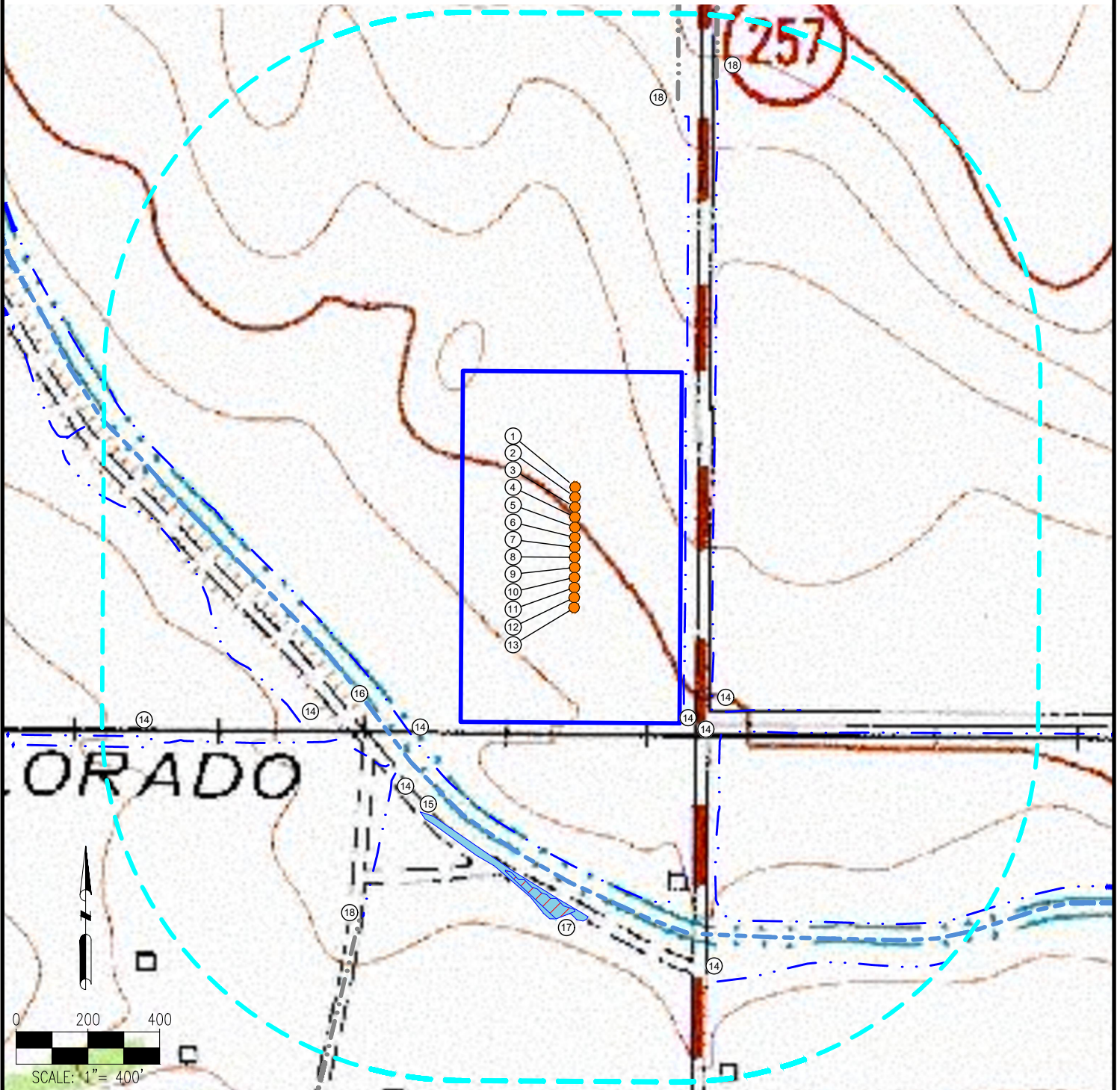


WALT 17-E PAD HYDROLOGY MAP



MEASUREMENTS ARE MADE FROM THE NEAREST EDGE OF THE DISTURBANCE AREA.

1. WALT 8N-20-22C
2. WALT 16E-20-1N
3. WALT 8N-20-20N
4. WALT 16E-20-3C
5. WALT 16E-20-5N
6. WALT 8N-20-18N

7. WALT 8N-20-17N
8. WALT 8N-20-16C
9. WALT 8N-20-15N
10. WALT 8N-20-14N
11. WALT 8N-20-13N
12. WALT 17W-20-1N

13. WALT 17W-20-3C
14. DITCHES ARE $\pm 11'$ E, $\pm 88'$ E, $\pm 121'$ SE, $\pm 728'$ SE, $\pm 132'$ SW, $\pm 232'$ SW, $\pm 234'$ SW, $\pm 350'$ SW
15. POND IS $\pm 274'$ SW
16. CANAL IS $\pm 179'$ SW
17. WETLANDS ARE $\pm 413'$ S

18. CONCRETE DITCHES ARE $\pm 751'$ N, $\pm 819'$ NE, $608'$ SW

LEGEND:

● = PROPOSED WELL

--- = DITCH

--- = CANAL

--- = CONCRETE DITCH

■ = POND

■ = WETLANDS

■ = DISTURBANCE AREA

--- = 1000' RADIUS

DISCLAIMER:
THIS PLOT DOES NOT REPRESENT A MONUMENTED LAND SURVEY AND SHOULD NOT BE RELIED UPON TO DETERMINE BOUNDARY LINES, PROPERTY OWNERSHIP OR OTHER PROPERTY INTERESTS. PARCEL LINES, IF DEPICTED HAVE NOT BEEN FIELD VERIFIED AND MAY BE BASED UPON PUBLICLY AVAILABLE DATA THAT ALSO HAS NOT BEEN INDEPENDENTLY VERIFIED.

DATA SOURCE:
TOPO MAP: USGS
NHD: USGS

PUBLICLY AVAILABLE DATA SOURCES HAVE NOT BEEN INDEPENDENTLY VERIFIED BY ASCENT.



7535 Hilltop Circle
Denver, CO 80221
(303) 928-7128
www.ascentgeomatics.com

FIELD DATE:
05-17-17

DRAWING DATE:
07-17-17

BY:
IJM

CHECKED:
CSG

SITE NAME:
WALT 17-E PAD

SURFACE LOCATION:

SE 1/4 NE 1/4 SEC. 17, T7N, R67W, 6TH P.M.
WELD COUNTY, COLORADO

PREPARED FOR:

