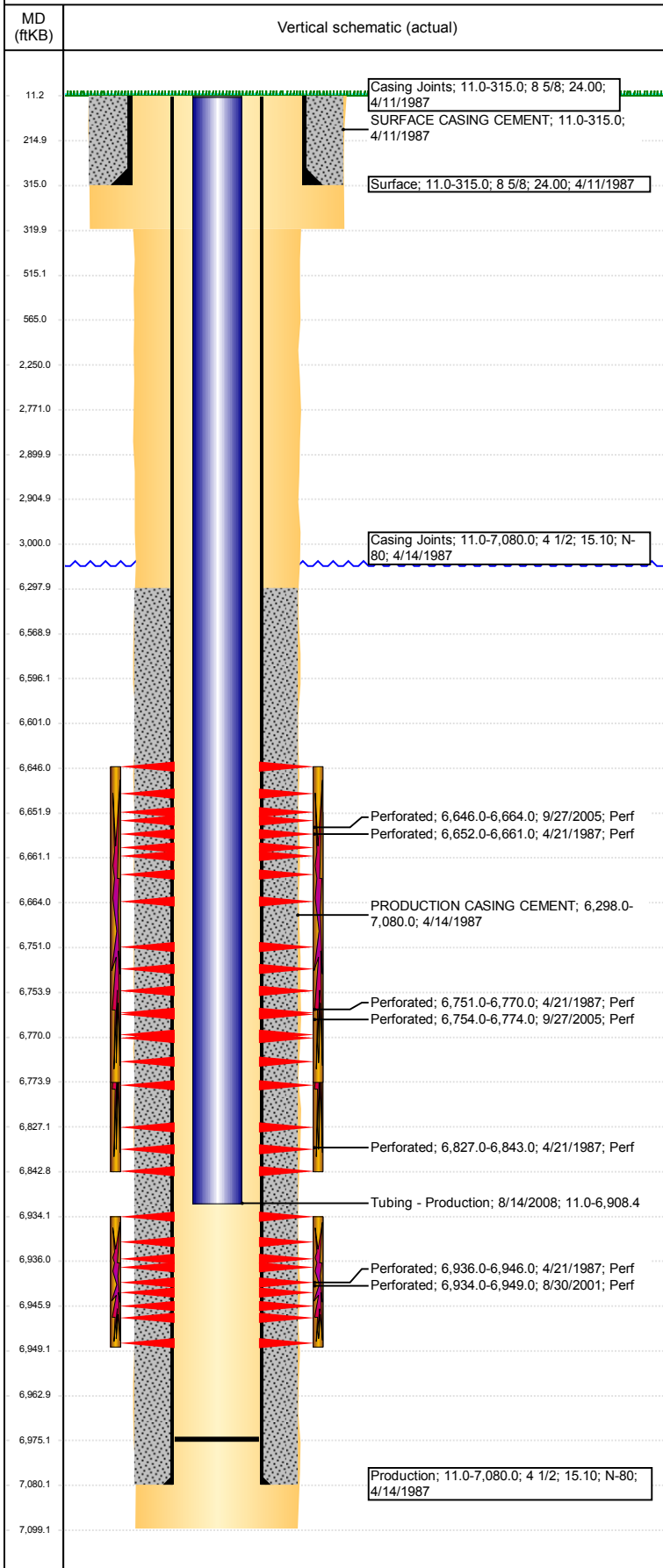


Well Name: MENONI B30-10

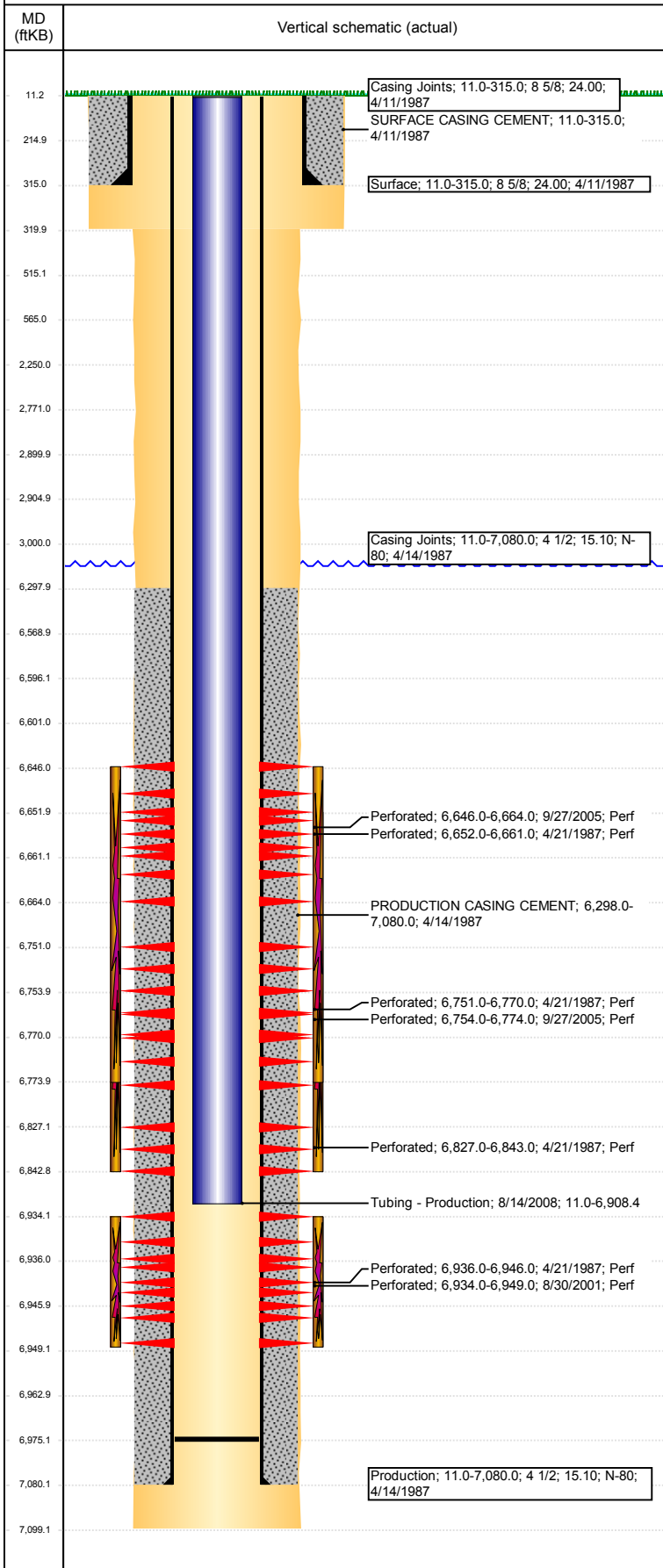
VERTICAL - ORIGINAL HOLE, 7/19/2017 5:00:40 PM



Well Header							
API 05-123-13435	Business Unit DJ BASIN		District 15		Well Config VERTICAL		
Original KB Elevation (ft) 4,712	KB - GL / MSL (ftKB) 11.00		Spud Date 4/11/1987		P & A Date		
Comment split batt 10/01							
Directions To Well RD 50 AND RD 51, NORTH 1 MILE, WEST THROUGH GREEN GATE, 4/10, NORTH INTO							
Congressional Location							
Quarter 3 NW	Quarter 4 SE	Section 30	Township 5	Twntshp N/S Dir N	Range 64	Range E/W Dir W	
Bottom Hole Location							
North-South Distance (ft)		From N or S Line		East-West Distance (ft)		From E or W Line	
Plug Back Total Depths							
Date	Depth (ftKB)	Method		Com			
10/17/2005	6,985.0	TAG		C/O WELL & LANDED TBG			
8/14/2008	6,975.0	TAG		C/O WELL & LANDED TBG			
Wellbore Sections							
Section Des		Size (in)		Act Top, MD (ftKB)		Act Btm, MD (ftKB)	
SURFACE		12 1/4		11		320	
PRODUCTION		7 7/8		320		7,099	
Zone Statuses							
Zone Name	Status Date	Status	Fluid Type	Job	Prod Method		
CODELL	5/8/1987	PR	Water	DRILLING/CO...	Flowing		
CODELL	9/8/2001	PR		RE-FRAC, 8/28...			
CODELL	9/23/2005	SI		RE-FRAC, 9/3/...			
CODELL	10/18/2005	PR		RE-FRAC, 9/3/...			
CODELL	9/22/2008	PR		TRI-FRAC, 7/2...			
CODELL	2/8/2010	PR					
NIOBRARA	5/8/1987	PR	Water	DRILLING/CO...	Flowing		
NIOBRARA	10/4/2005	PR		RE-FRAC, 9/3/...			
NIOBRARA	10/18/2005	PR		RE-FRAC, 9/3/...			
NIOBRARA	2/8/2010	PR					
NIOBRARA	10/27/2016	SI					
Casing Strings							
Surface, 315.0ftKB							
Casing Description Surface	Run Date 4/11/1987	OD (in) 8 5/8	Wt/Len (l... 24.00	Grade	Top, MD (ft... 11.0	MD (ftKB) 315.0	
Production, 7,080.0ftKB							
Casing Description Production	Run Date 4/14/1987	OD (in) 4 1/2	Wt/Len (l... 15.10	Grade N-80	Top, MD (ft... 11.0	MD (ftKB) 7,080.0	
Cement							
Description SURFACE CASING CEMENT				Top Depth (ftKB) 11.0		Bottom Depth (ftKB) 315.0	
Description PRODUCTION CASING CEMENT				Top Depth (ftKB) 6,298.0		Bottom Depth (ftKB) 7,080.0	
Description Dump Bail				Top Depth (ftKB) 6,569.0		Bottom Depth (ftKB) 6,596.0	
Description Cement Plug				Top Depth (ftKB) 2,771.0		Bottom Depth (ftKB) 2,900.0	
Description Cement Plug				Top Depth (ftKB) 2,905.0		Bottom Depth (ftKB) 3,000.0	
Description Cement Plug				Top Depth (ftKB) 2,250.0		Bottom Depth (ftKB) 3,000.0	
Description Balance Plug				Top Depth (ftKB) 11.0		Bottom Depth (ftKB) 215.0	
Description Balance Plug				Top Depth (ftKB) 215.0		Bottom Depth (ftKB) 515.0	
Description Cement Plug				Top Depth (ftKB) 515.0		Bottom Depth (ftKB) 565.0	
Tubing Strings							
Tubing Description Tubing - Production	Run Date 10/17/2005	String... 2 3/8	ID (in) 2.00	Wt (lb/ft) 4.70	Grade J-55	Len (ft) 6,905.00	Set De...
Tubing Description Tubing - Frac string	Run Date 7/23/2008	String... 2 7/8	ID (in) 2.44	Wt (lb/ft) 6.50	Grade N-80	Len (ft) 6,875.53	Set De...

Well Name: MENONI B30-10

VERTICAL - ORIGINAL HOLE, 7/19/2017 5:00:42 PM



Tubing Strings							
Tubing Description	Run Date	String...	ID (in)	Wt (lb/ft)	Grade	Len (ft)	Set De...
Tubing - Production	8/14/2008	2 3/8	2.00	4.70	J-55	6,897.39	
Other In Hole							
Run Date	Des			OD (in)	Top (ftKB)	Btm (ftKB)	
7/17/2017	Cement Retainer			3.99	2,900.0	2,905.0	
7/17/2017	Cast Iron Bridge Plug			3.99	6,596.0	6,601.0	
Logs							
Date	Type			Top, MD (ftKB)	Btm, MD (ftKB)		
4/15/1987	Compensated Neutron			3,400.0	7,065.0		
4/15/1987	Induction			250.0	7,090.0		
4/20/1987	Cement Bond			6,050.0	6,966.0		
2/9/2017	GYRO			0.0	6,850.0		
Perforation Data							
Linked Zone	Bnch/St g	Sum of Entered Shot Total	Top (ftKB)	Btm (ftKB)	Date		
CODELL, ORIGINAL HOLE		0	3,000.00	3,000.00	7/17/2017		
NIOBRARA, ORIGINAL HOLE	A	108	6,646.00	6,664.00	9/27/2005		
NIOBRARA, ORIGINAL HOLE	A	3	6,652.00	6,661.00	4/21/1987		
NIOBRARA, ORIGINAL HOLE	B	5	6,751.00	6,770.00	4/21/1987		
NIOBRARA, ORIGINAL HOLE	B	120	6,754.00	6,774.00	9/27/2005		
NIOBRARA, ORIGINAL HOLE	C	2	6,827.00	6,843.00	4/21/1987		
CODELL, ORIGINAL HOLE		60	6,934.00	6,949.00	8/30/2001		
CODELL, ORIGINAL HOLE		5	6,936.00	6,946.00	4/21/1987		
Total (Sum)		303					
Stimulation Intervals							
Start Date	Primary Job Type						
4/22/1987	DRILLING/COMPLETION - ORIGINAL						
Technical Result	Tech Result Details			Tech Result Note			
Comment							
Start Date	Primary Job Type						
9/4/2001	RE-FRAC						
Technical Result	Tech Result Details			Tech Result Note			
Comment							
Start Date	Primary Job Type						
10/3/2005	RE-FRAC						
Technical Result	Tech Result Details			Tech Result Note			
Comment							
Start Date	Primary Job Type						
8/11/2008	TRI-FRAC						
Technical Result	Tech Result Details			Tech Result Note			
Success	According to Plan						
Comment							
(CODELL TF): BACKSIDE USED 40 BBLS TO LOAD AND 106 BBL DURING THE JOB. CLEAN TANKS LEANING AS WELL SO DENSITY WAS INCREASED BY 0.1 TO MAKE SURE THERE WAS ENOUGH WATER TO COMPLETE JOB. NO OTHER ISSUES TO REPORT.							
Start Date	Primary Job Type						
4/22/1987	DRILLING/COMPLETION - ORIGINAL						
Technical Result	Tech Result Details			Tech Result Note			
Comment							