

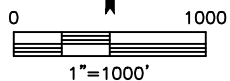
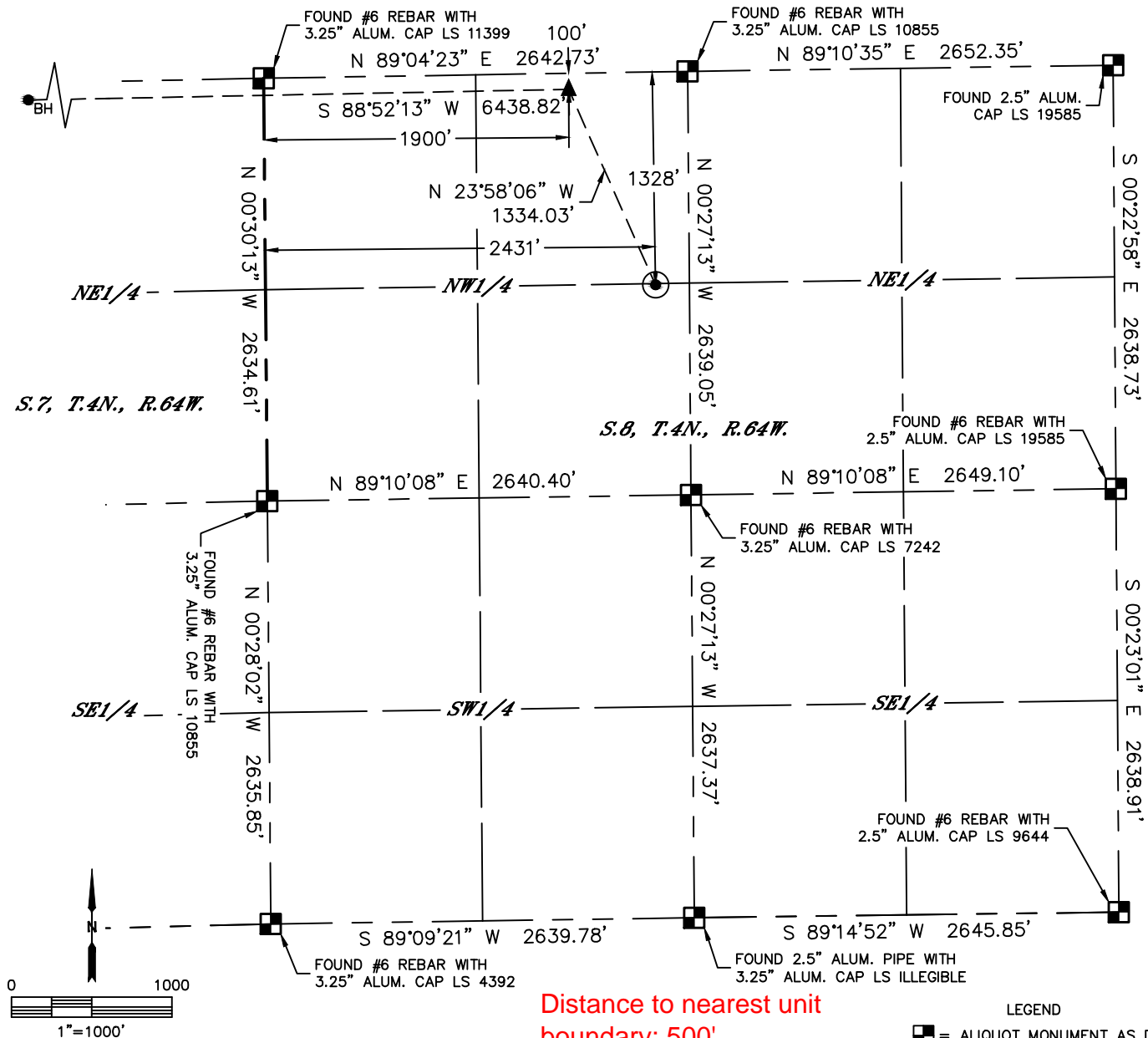


Lat40°, Inc. 6250 W. 10th Street, Unit 2, Greeley, CO 970-515-5294

# WELL LOCATION CERTIFICATE

CHALLENGER 1N

SECTION: 8  
TOWNSHIP: 4N  
RANGE: 64W  
6TH. P.M.  
WELD COUNTY, CO



Distance to nearest unit  
boundary: 500'

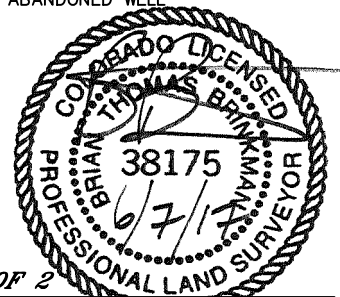
CLIENT: PDC ENERGY, INC.				LANDMAN: JEFF HINDMARSH		
INSTRUMENT OPERATOR: SCOTT SHERARD				SURVEY DATE: 3/13/2017		SURFACE USE: PASTURE
SHL FOOTAGE	SHL LAT °	SHL LONG °	SHL PDOP	SHL ELEV (FT.)	SHL 1/4/1/4	SHL S-T-R
1328 FNL 2431 FWL	40.33048	-104.57526	2.2	4774	SENW	8-4-64

BHL FOOTAGE	BHL LAT °	BHL LONG °	BHL S-T-R	EP LAT °	EP LONG °	EP S-T
100 FNL 500 FWL	40.33368	-104.60025	7-4-64	40.33384	-104.57716	8-4-64

- NOTE:
- Bearings shown are Grid Bearings of the Colorado State Plane Coordinate System, North Zone, North American Datum 1983. The lineal dimensions as contained herein are based upon the "U.S. Survey Foot."
  - Distances to section lines measured at 90 degrees from said section lines.
  - Ground elevations are based on an observed GPS elevation (NAVD 1988 DATUM).
  - Latitude and Longitude shown are (NAD 83 DATUM).
  - IMPROVEMENTS: See LOCATION DRAWING for all visible improvements within 500' of oil and gas location.
  - This map does not represent a boundary survey.

NEAREST CULTURAL ITEMS	
BUILDING	±678' NW
BUILDING UNIT	±678' NW
HIGH OCCUPANCY BUILDING UNIT	5280'+
DESIGNATED OUTSIDE ACTIVITY AREA	5280'+
PUBLIC ROAD (COUNTY ROAD 46)	±1318' N
ABOVE GROUND UTILITY	±576' NW
RAILROAD	5280'+
PROPERTY LINE	±210' E

- LEGEND
- = ALIQUOT MONUMENT AS DESCRIBED
  - = CALCULATED POSITION
  - = SURFACE HOLE LOCATION (SHL)
  - ▲ = ENTRY POINT LOCATION (EP)
  - BH = BOTTOM HOLE LOCATION (BHL)
  - ⊕ = EXISTING WELL
  - ⊖ = ABANDONED WELL



SHEET 1 OF 2

Brian T. Brinkman—On behalf of Lat40°, Inc.  
Colorado Licensed Professional Land Surveyor No. 38175  
DATE: 6/7/2017  
PROJECT#: 2016123

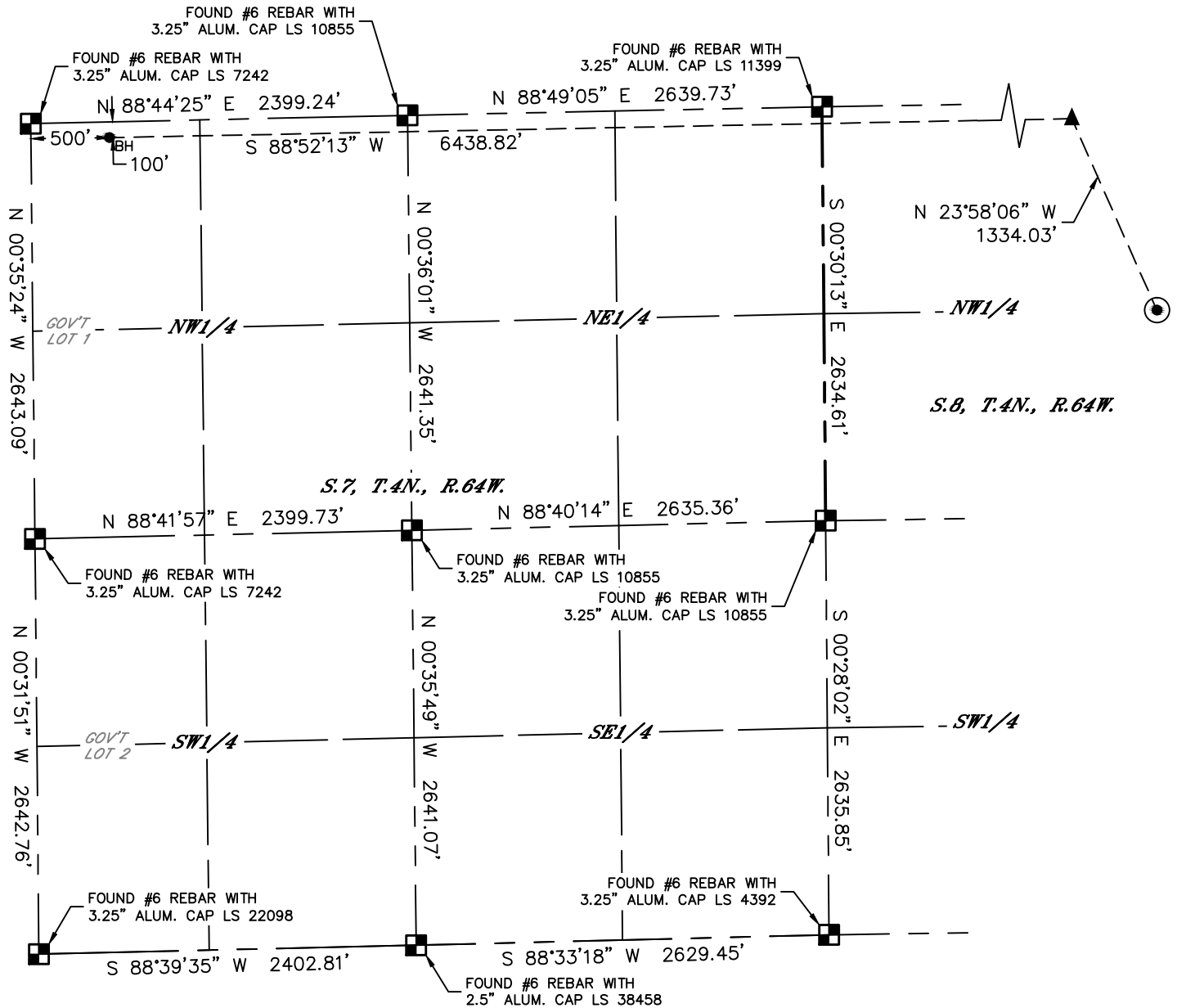


Lat40°, Inc. 6250 W. 10th Street, Unit 2, Greeley, CO 970-515-5294

# WELL LOCATION CERTIFICATE

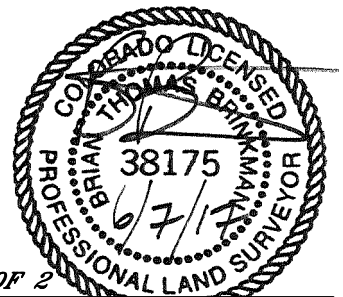
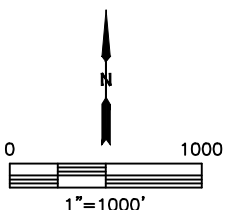
CHALLENGER 1N

SECTION: 8  
TOWNSHIP: 4N  
RANGE: 64W  
6TH. P.M.  
WELD COUNTY, CO



## LEGEND

- = ALIQUOT MONUMENT AS DESCRIBED
- = CALCULATED POSITION
- ⊙ = SURFACE HOLE LOCATION (SHL)
- ▲ = ENTRY POINT LOCATION (EP)
- = BOTTOM HOLE LOCATION (BHL)
- ⊕ = EXISTING WELL
- ⊖ = ABANDONED WELL



SHEET 2 OF 2

Brian T. Brinkman—On behalf of Lat40°, Inc.  
Colorado Licensed Professional Land Surveyor No. 38175  
DATE: 6/7/2017  
PROJECT#: 2016123