

Location:	COLORADO	Slot:	SLOT#07 WARNER 01N-64W-17-7H (210°FSL & 2461°FWL,SEC.17)
Field:	WELD COUNTY (NAD83/TN)	Well:	WARNER 01N-64W-17-7H
Facility:	SEC.17-T1N-R64W	Wellbore:	WARNER 01N-64W-17-7H PWB



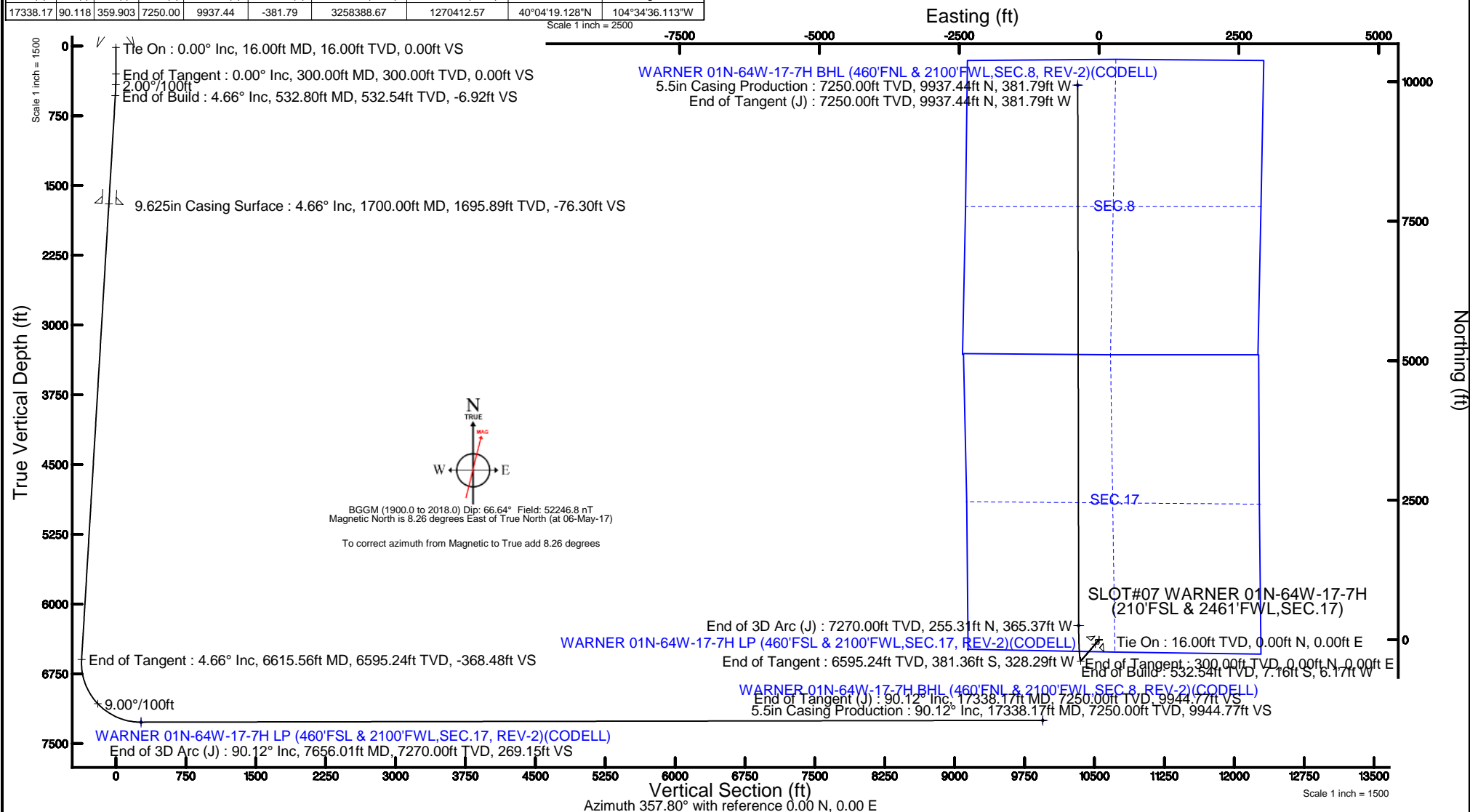
Facility Name			Grid East (US ft)	Grid North (US ft)	Latitude	Longitude
SEC.17-T1N-R64W			3258754.187	1260480.616	40°02'40.942"N	104°34'32.743"W
Slot	Local N (ft)	Local E (ft)	Grid East (US ft)	Grid North (US ft)	Latitude	Longitude
SLOT#07 WARNER 01N-64W-17-7H (210FSL & 2461FWLSEC.17)	-1.82	119.85	3258874.042	1260480.044	40°02'40.924"N	104°34'31.202"W
RIG (16'RKB +5067'GL) (RKB) to Mud line (At Slot: SLOT#07 WARNER 01N-64W-17-7H (210FSL & 2461FWLSEC.17))					5083ft	
Mean Sea Level to Mud line (At Slot: SLOT#07 WARNER 01N-64W-17-7H (210FSL & 2461FWLSEC.17))					0ft	
RIG (16'RKB +5067'GL) (RKB) to Mean Sea Level					5083ft	

MD (ft)	Inc (°)	Az (°)	TVD (ft)	Local N (ft)	Local E (ft)	Grid East (US ft)	Grid North (US ft)	Latitude	Longitude
17338.17	90.118	359.903	7250.00	9937.44	-381.79	3258388.67	1270412.57	40°04'19.128"N	104°34'36.113"W

Design Comment	MD	Inc (°)	Az (°)	TVD (ft)	Local N (ft)	Local E (ft)	DLS (°/100ft)	VS (ft)
Tie On	16.00	0.000	220.724	16.00	0.00	0.00	0.00	0.00
End of Tangent	300.00	0.000	220.724	300.00	0.00	0.00	0.00	0.00
End of Build	532.80	4.656	220.724	532.54	-7.16	-6.17	2.00	-6.92
End of Tangent	6615.56	4.656	220.724	6595.24	-381.36	-328.29	0.00	-368.48
End of 3D Arc (J)	7656.01	90.118	359.903	7270.00	255.31	-365.37	9.00	269.15
End of Tangent (J)	17338.17	90.118	359.903	7250.00	9937.44	-381.79	0.00	994.77

Start MD (ft)	End MD (ft)	Tool	Model	Log Name/Comment	Wellbore
16.00	1700.00	BHI Navitrak	Custom BHI Navitrak (Standard Rotating+Axial Corr) (Rockies 0.03Gt model)		WARNER 01N-64W-17-7H PWB
1700.00	17338.17	BHI AutoTrak Curve	Custom BHI AutoTrak Curve (Axial Corr, Short spacing) (Rockies 0.03Gt model)		WARNER 01N-64W-17-7H PWB

<b>Plot reference wellpath is WARNER 01N-64W-17-7H (REV-B-0, CODELL)</b>		Grid System: NAD83 / Lambert Colorado SP, Northern Zone (501), US feet
True vertical depths are referenced to RIG (16RKB +5067GL) (RKB)	* = Wellpath was transformed from a different geodetic datum	
Measured depths are referenced to RIG (16RKB +5067GL) (RKB)	North Reference: True north	
RIG (16RKB +5067GL) RKB to Mean Sea Level: 5083 feet	Scale: True distance	
Mean Sea Level to Mud line (At Slot: SLOT067 WARNER 01N-64W-17-7H (210FSL & 2461FWL, SEC. 17)): 0 feet	Depths are in feet	
Coordinates are in feet referenced to Slot	Created by: cookdam on 2017-05-24	
	Database: WA_Denver	





# Planned Wellpath Report

WARNER 01N-64W-17-7H (REV-B.0, CODELL)

Page 1 of 6



REFERENCE WELLPATH IDENTIFICATION			
Operator	VERDAD OIL & GAS CORPORATION	Slot	SLOT#07 WARNER 01N-64W-17-7H (210'FSL & 2461'FWL, SEC.17)
Area	COLORADO	Well	WARNER 01N-64W-17-7H
Field	WELD COUNTY (NAD83/TN)	Wellbore	WARNER 01N-64W-17-7H PWB
Facility	SEC.17-T1N-R64W		

REPORT SETUP INFORMATION			
Projection System	NAD83 / Lambert Colorado SP, Northern Zone (501), US feet	Software System	WellArchitect® 5.0
North Reference	True	User	Cookdanm
Scale	0.999963	Report Generated	24-May-17 at 1:21:42 PM
Convergence at slot	0.60° East	Database/Source file	WA_Denver/WARNER_01N-64W-17-7H__REV-B.0__CODELL__.xml

WELLPATH LOCATION						
	Local coordinates		Grid coordinates		Geographic coordinates	
	North[ft]	East[ft]	Easting[US ft]	Northing[US ft]	Latitude	Longitude
Slot Location	-1.82	119.85	3258874.04	1260480.04	40°02'40.924"N	104°34'31.202"W
Facility Reference Pt			3258754.19	1260480.62	40°02'40.942"N	104°34'32.743"W
Field Reference Pt			3242930.13	1254608.21	40°01'44.490"N	104°37'56.946"W

WELLPATH DATUM			
Calculation method	Minimum curvature	RIG (16'RKB +5067'GL) (RKB) to Facility Vertical Datum	5083.00ft
Horizontal Reference Pt	Slot	RIG (16'RKB +5067'GL) (RKB) to Mean Sea Level	5083.00ft
Vertical Reference Pt	RIG (16'RKB +5067'GL) (RKB)	RIG (16'RKB +5067'GL) (RKB) to Mud Line at Slot (SLOT#07 WARNER 01N-64W-17-7H (210'FSL & 2461'FWL, SEC.17))	5083.00ft
MD Reference Pt	RIG (16'RKB +5067'GL) (RKB)	Section Origin	N 0.00, E 0.00 ft
Field Vertical Reference	Mean Sea Level	Section Azimuth	357.80°



# Planned Wellpath Report

WARNER 01N-64W-17-7H (REV-B.0, CODELL)

Page 2 of 6



## REFERENCE WELLPATH IDENTIFICATION

Operator	VERDAD OIL & GAS CORPORATION	Slot	SLOT#07 WARNER 01N-64W-17-7H (210'FSL & 2461'FWL, SEC.17)
Area	COLORADO	Well	WARNER 01N-64W-17-7H
Field	WELD COUNTY (NAD83/TN)	Wellbore	WARNER 01N-64W-17-7H PWB
Facility	SEC.17-T1N-R64W		

## WELLPATH DATA (180 stations) † = interpolated/extrapolated station

MD [ft]	Inclination [°]	Azimuth [°]	TVD [ft]	Vert Sect [ft]	North [ft]	East [ft]	Latitude	Longitude	DLS [°/100ft]	Comments
0.00†	0.000	220.724	0.00	0.00	0.00	0.00	40°02'40.924"N	104°34'31.202"W	0.00	
16.00	0.000	220.724	16.00	0.00	0.00	0.00	40°02'40.924"N	104°34'31.202"W	0.00	Tie On
116.00†	0.000	220.724	116.00	0.00	0.00	0.00	40°02'40.924"N	104°34'31.202"W	0.00	
216.00†	0.000	220.724	216.00	0.00	0.00	0.00	40°02'40.924"N	104°34'31.202"W	0.00	
300.00	0.000	220.724	300.00	0.00	0.00	0.00	40°02'40.924"N	104°34'31.202"W	0.00	End of Tangent
316.00†	0.320	220.724	316.00	-0.03	-0.03	-0.03	40°02'40.924"N	104°34'31.202"W	2.00	
416.00†	2.320	220.724	415.97	-1.72	-1.78	-1.53	40°02'40.906"N	104°34'31.222"W	2.00	
516.00†	4.320	220.724	515.80	-5.96	-6.17	-5.31	40°02'40.863"N	104°34'31.270"W	2.00	
532.80	4.656	220.724	532.54	-6.92	-7.16	-6.17	40°02'40.853"N	104°34'31.281"W	2.00	End of Build
616.00†	4.656	220.724	615.47	-11.87	-12.28	-10.57	40°02'40.803"N	104°34'31.338"W	0.00	
716.00†	4.656	220.724	715.14	-17.81	-18.43	-15.87	40°02'40.742"N	104°34'31.406"W	0.00	
816.00†	4.656	220.724	814.81	-23.76	-24.59	-21.17	40°02'40.681"N	104°34'31.474"W	0.00	
916.00†	4.656	220.724	914.48	-29.70	-30.74	-26.46	40°02'40.620"N	104°34'31.542"W	0.00	
1016.00†	4.656	220.724	1014.15	-35.64	-36.89	-31.76	40°02'40.559"N	104°34'31.610"W	0.00	
1116.00†	4.656	220.724	1113.82	-41.59	-43.04	-37.05	40°02'40.499"N	104°34'31.678"W	0.00	
1216.00†	4.656	220.724	1213.49	-47.53	-49.19	-42.35	40°02'40.438"N	104°34'31.747"W	0.00	
1316.00†	4.656	220.724	1313.16	-53.48	-55.35	-47.64	40°02'40.377"N	104°34'31.815"W	0.00	
1416.00†	4.656	220.724	1412.83	-59.42	-61.50	-52.94	40°02'40.316"N	104°34'31.883"W	0.00	
1516.00†	4.656	220.724	1512.50	-65.36	-67.65	-58.24	40°02'40.255"N	104°34'31.951"W	0.00	
1616.00†	4.656	220.724	1612.17	-71.31	-73.80	-63.53	40°02'40.195"N	104°34'32.019"W	0.00	
1716.00†	4.656	220.724	1711.84	-77.25	-79.95	-68.83	40°02'40.134"N	104°34'32.087"W	0.00	
1816.00†	4.656	220.724	1811.51	-83.19	-86.10	-74.12	40°02'40.073"N	104°34'32.155"W	0.00	
1916.00†	4.656	220.724	1911.18	-89.14	-92.26	-79.42	40°02'40.012"N	104°34'32.223"W	0.00	
2016.00†	4.656	220.724	2010.85	-95.08	-98.41	-84.71	40°02'39.952"N	104°34'32.291"W	0.00	
2116.00†	4.656	220.724	2110.52	-101.03	-104.56	-90.01	40°02'39.891"N	104°34'32.359"W	0.00	
2216.00†	4.656	220.724	2210.19	-106.97	-110.71	-95.31	40°02'39.830"N	104°34'32.427"W	0.00	
2316.00†	4.656	220.724	2309.86	-112.91	-116.86	-100.60	40°02'39.769"N	104°34'32.496"W	0.00	
2416.00†	4.656	220.724	2409.53	-118.86	-123.01	-105.90	40°02'39.708"N	104°34'32.564"W	0.00	
2516.00†	4.656	220.724	2509.20	-124.80	-129.17	-111.19	40°02'39.648"N	104°34'32.632"W	0.00	
2616.00†	4.656	220.724	2608.87	-130.75	-135.32	-116.49	40°02'39.587"N	104°34'32.700"W	0.00	
2716.00†	4.656	220.724	2708.54	-136.69	-141.47	-121.78	40°02'39.526"N	104°34'32.768"W	0.00	
2816.00†	4.656	220.724	2808.21	-142.63	-147.62	-127.08	40°02'39.465"N	104°34'32.836"W	0.00	
2916.00†	4.656	220.724	2907.88	-148.58	-153.77	-132.38	40°02'39.404"N	104°34'32.904"W	0.00	
3016.00†	4.656	220.724	3007.55	-154.52	-159.92	-137.67	40°02'39.344"N	104°34'32.972"W	0.00	
3116.00†	4.656	220.724	3107.22	-160.47	-166.08	-142.97	40°02'39.283"N	104°34'33.040"W	0.00	
3216.00†	4.656	220.724	3206.89	-166.41	-172.23	-148.26	40°02'39.222"N	104°34'33.108"W	0.00	
3316.00†	4.656	220.724	3306.56	-172.35	-178.38	-153.56	40°02'39.161"N	104°34'33.176"W	0.00	
3416.00†	4.656	220.724	3406.23	-178.30	-184.53	-158.85	40°02'39.100"N	104°34'33.245"W	0.00	
3516.00†	4.656	220.724	3505.90	-184.24	-190.68	-164.15	40°02'39.040"N	104°34'33.313"W	0.00	
3616.00†	4.656	220.724	3605.57	-190.18	-196.83	-169.45	40°02'38.979"N	104°34'33.381"W	0.00	
3716.00†	4.656	220.724	3705.24	-196.13	-202.99	-174.74	40°02'38.918"N	104°34'33.449"W	0.00	
3816.00†	4.656	220.724	3804.91	-202.07	-209.14	-180.04	40°02'38.857"N	104°34'33.517"W	0.00	
3916.00†	4.656	220.724	3904.58	-208.02	-215.29	-185.33	40°02'38.796"N	104°34'33.585"W	0.00	
4016.00†	4.656	220.724	4004.25	-213.96	-221.44	-190.63	40°02'38.736"N	104°34'33.653"W	0.00	
4116.00†	4.656	220.724	4103.92	-219.90	-227.59	-195.92	40°02'38.675"N	104°34'33.721"W	0.00	



# Planned Wellpath Report

WARNER 01N-64W-17-7H (REV-B.0, CODELL)

Page 3 of 6



## REFERENCE WELLPATH IDENTIFICATION

Operator	VERDAD OIL & GAS CORPORATION	Slot	SLOT#07 WARNER 01N-64W-17-7H (210'FSL & 2461'FWL, SEC.17)
Area	COLORADO	Well	WARNER 01N-64W-17-7H
Field	WELD COUNTY (NAD83/TN)	Wellbore	WARNER 01N-64W-17-7H PWB
Facility	SEC.17-T1N-R64W		

## WELLPATH DATA (180 stations) † = interpolated/extrapolated station

MD [ft]	Inclination [°]	Azimuth [°]	TVD [ft]	Vert Sect [ft]	North [ft]	East [ft]	Latitude	Longitude	DLS [°/100ft]	Comments
4216.00†	4.656	220.724	4203.59	-225.85	-233.75	-201.22	40°02'38.614"N	104°34'33.789"W	0.00	
4316.00†	4.656	220.724	4303.26	-231.79	-239.90	-206.52	40°02'38.553"N	104°34'33.857"W	0.00	
4416.00†	4.656	220.724	4402.93	-237.74	-246.05	-211.81	40°02'38.492"N	104°34'33.925"W	0.00	
4516.00†	4.656	220.724	4502.60	-243.68	-252.20	-217.11	40°02'38.432"N	104°34'33.994"W	0.00	
4616.00†	4.656	220.724	4602.27	-249.62	-258.35	-222.40	40°02'38.371"N	104°34'34.062"W	0.00	
4716.00†	4.656	220.724	4701.94	-255.57	-264.50	-227.70	40°02'38.310"N	104°34'34.130"W	0.00	
4816.00†	4.656	220.724	4801.61	-261.51	-270.66	-232.99	40°02'38.249"N	104°34'34.198"W	0.00	
4916.00†	4.656	220.724	4901.28	-267.45	-276.81	-238.29	40°02'38.189"N	104°34'34.266"W	0.00	
5016.00†	4.656	220.724	5000.95	-273.40	-282.96	-243.59	40°02'38.128"N	104°34'34.334"W	0.00	
5116.00†	4.656	220.724	5100.62	-279.34	-289.11	-248.88	40°02'38.067"N	104°34'34.402"W	0.00	
5216.00†	4.656	220.724	5200.29	-285.29	-295.26	-254.18	40°02'38.006"N	104°34'34.470"W	0.00	
5316.00†	4.656	220.724	5299.96	-291.23	-301.41	-259.47	40°02'37.945"N	104°34'34.538"W	0.00	
5416.00†	4.656	220.724	5399.63	-297.17	-307.57	-264.77	40°02'37.885"N	104°34'34.606"W	0.00	
5516.00†	4.656	220.724	5499.30	-303.12	-313.72	-270.06	40°02'37.824"N	104°34'34.674"W	0.00	
5616.00†	4.656	220.724	5598.97	-309.06	-319.87	-275.36	40°02'37.763"N	104°34'34.743"W	0.00	
5716.00†	4.656	220.724	5698.64	-315.01	-326.02	-280.66	40°02'37.702"N	104°34'34.811"W	0.00	
5816.00†	4.656	220.724	5798.31	-320.95	-332.17	-285.95	40°02'37.641"N	104°34'34.879"W	0.00	
5916.00†	4.656	220.724	5897.98	-326.89	-338.32	-291.25	40°02'37.581"N	104°34'34.947"W	0.00	
6016.00†	4.656	220.724	5997.65	-332.84	-344.48	-296.54	40°02'37.520"N	104°34'35.015"W	0.00	
6116.00†	4.656	220.724	6097.32	-338.78	-350.63	-301.84	40°02'37.459"N	104°34'35.083"W	0.00	
6216.00†	4.656	220.724	6196.99	-344.73	-356.78	-307.13	40°02'37.398"N	104°34'35.151"W	0.00	
6316.00†	4.656	220.724	6296.66	-350.67	-362.93	-312.43	40°02'37.337"N	104°34'35.219"W	0.00	
6416.00†	4.656	220.724	6396.33	-356.61	-369.08	-317.73	40°02'37.277"N	104°34'35.287"W	0.00	
6516.00†	4.656	220.724	6496.00	-362.56	-375.23	-323.02	40°02'37.216"N	104°34'35.355"W	0.00	
6615.56	4.656	220.724	6595.24	-368.48	-381.36	-328.29	40°02'37.155"N	104°34'35.423"W	0.00	End of Tangent
6616.00†	4.626	221.043	6595.67	-368.50	-381.39	-328.32	40°02'37.155"N	104°34'35.423"W	9.00	
6716.00†	6.301	331.069	6695.41	-366.53	-379.62	-333.63	40°02'37.172"N	104°34'35.492"W	9.00	
6816.00†	14.828	348.294	6793.65	-348.98	-362.25	-338.89	40°02'37.344"N	104°34'35.559"W	9.00	
6916.00†	23.703	352.931	6887.96	-316.26	-329.71	-343.97	40°02'37.666"N	104°34'35.625"W	9.00	
7016.00†	32.645	355.129	6976.02	-269.19	-282.79	-348.75	40°02'38.129"N	104°34'35.686"W	9.00	
7116.00†	41.609	356.460	7055.67	-208.94	-222.66	-353.10	40°02'38.724"N	104°34'35.742"W	9.00	
7216.00†	50.585	357.389	7124.94	-136.97	-150.78	-356.91	40°02'39.434"N	104°34'35.791"W	9.00	
7316.00†	59.566	358.104	7182.14	-55.06	-68.94	-360.11	40°02'40.243"N	104°34'35.832"W	9.00	
7416.00†	68.550	358.698	7225.84	34.76	20.86	-362.60	40°02'41.130"N	104°34'35.864"W	9.00	
7516.00†	77.536	359.222	7254.98	130.30	116.40	-364.32	40°02'42.074"N	104°34'35.886"W	9.00	
7616.00†	86.523	359.711	7268.83	229.19	215.33	-365.24	40°02'43.052"N	104°34'35.898"W	9.00	
7656.01	90.118	359.903	7270.00†	269.15	255.31	-365.37	40°02'43.447"N	104°34'35.900"W	9.00	End of 3D Arc (J)
7716.00†	90.118	359.903	7269.88	329.10	315.30	-365.47	40°02'44.040"N	104°34'35.901"W	0.00	
7816.00†	90.118	359.903	7269.67	429.03	415.30	-365.64	40°02'45.028"N	104°34'35.904"W	0.00	
7916.00†	90.118	359.903	7269.46	528.96	515.30	-365.81	40°02'46.016"N	104°34'35.906"W	0.00	
8016.00†	90.118	359.903	7269.26	628.90	615.30	-365.98	40°02'47.005"N	104°34'35.908"W	0.00	
8116.00†	90.118	359.903	7269.05	728.83	715.30	-366.15	40°02'47.993"N	104°34'35.910"W	0.00	
8216.00†	90.118	359.903	7268.84	828.76	815.30	-366.32	40°02'48.981"N	104°34'35.912"W	0.00	
8316.00†	90.118	359.903	7268.64	928.69	915.30	-366.49	40°02'49.969"N	104°34'35.915"W	0.00	
8416.00†	90.118	359.903	7268.43	1028.63	1015.30	-366.66	40°02'50.957"N	104°34'35.917"W	0.00	



# Planned Wellpath Report

WARNER 01N-64W-17-7H (REV-B.0, CODELL)

Page 4 of 6



## REFERENCE WELLPATH IDENTIFICATION

Operator	VERDAD OIL & GAS CORPORATION	Slot	SLOT#07 WARNER 01N-64W-17-7H (210'FSL & 2461'FWL, SEC.17)
Area	COLORADO	Well	WARNER 01N-64W-17-7H
Field	WELD COUNTY (NAD83/TN)	Wellbore	WARNER 01N-64W-17-7H PWB
Facility	SEC.17-T1N-R64W		

## WELLPATH DATA (180 stations) † = interpolated/extrapolated station

MD [ft]	Inclination [°]	Azimuth [°]	TVD [ft]	Vert Sect [ft]	North [ft]	East [ft]	Latitude	Longitude	DLS [°/100ft]	Comments
8516.00†	90.118	359.903	7268.22	1128.56	1115.30	-366.83	40°02'51.946"N	104°34'35.919"W	0.00	
8616.00†	90.118	359.903	7268.02	1228.49	1215.30	-367.00	40°02'52.934"N	104°34'35.921"W	0.00	
8716.00†	90.118	359.903	7267.81	1328.42	1315.30	-367.17	40°02'53.922"N	104°34'35.923"W	0.00	
8816.00†	90.118	359.903	7267.60	1428.36	1415.30	-367.34	40°02'54.910"N	104°34'35.926"W	0.00	
8916.00†	90.118	359.903	7267.40	1528.29	1515.30	-367.51	40°02'55.899"N	104°34'35.928"W	0.00	
9016.00†	90.118	359.903	7267.19	1628.22	1615.30	-367.68	40°02'56.887"N	104°34'35.930"W	0.00	
9116.00†	90.118	359.903	7266.98	1728.15	1715.30	-367.85	40°02'57.875"N	104°34'35.932"W	0.00	
9216.00†	90.118	359.903	7266.78	1828.09	1815.30	-368.02	40°02'58.863"N	104°34'35.934"W	0.00	
9316.00†	90.118	359.903	7266.57	1928.02	1915.30	-368.19	40°02'59.851"N	104°34'35.937"W	0.00	
9416.00†	90.118	359.903	7266.36	2027.95	2015.30	-368.36	40°03'00.840"N	104°34'35.939"W	0.00	
9516.00†	90.118	359.903	7266.16	2127.88	2115.30	-368.52	40°03'01.828"N	104°34'35.941"W	0.00	
9616.00†	90.118	359.903	7265.95	2227.82	2215.29	-368.69	40°03'02.816"N	104°34'35.943"W	0.00	
9716.00†	90.118	359.903	7265.74	2327.75	2315.29	-368.86	40°03'03.804"N	104°34'35.945"W	0.00	
9816.00†	90.118	359.903	7265.54	2427.68	2415.29	-369.03	40°03'04.792"N	104°34'35.948"W	0.00	
9916.00†	90.118	359.903	7265.33	2527.61	2515.29	-369.20	40°03'05.781"N	104°34'35.950"W	0.00	
10016.00†	90.118	359.903	7265.13	2627.55	2615.29	-369.37	40°03'06.769"N	104°34'35.952"W	0.00	
10116.00†	90.118	359.903	7264.92	2727.48	2715.29	-369.54	40°03'07.757"N	104°34'35.954"W	0.00	
10216.00†	90.118	359.903	7264.71	2827.41	2815.29	-369.71	40°03'08.745"N	104°34'35.956"W	0.00	
10316.00†	90.118	359.903	7264.51	2927.34	2915.29	-369.88	40°03'09.734"N	104°34'35.959"W	0.00	
10416.00†	90.118	359.903	7264.30	3027.28	3015.29	-370.05	40°03'10.722"N	104°34'35.961"W	0.00	
10516.00†	90.118	359.903	7264.09	3127.21	3115.29	-370.22	40°03'11.710"N	104°34'35.963"W	0.00	
10616.00†	90.118	359.903	7263.89	3227.14	3215.29	-370.39	40°03'12.698"N	104°34'35.965"W	0.00	
10716.00†	90.118	359.903	7263.68	3327.07	3315.29	-370.56	40°03'13.686"N	104°34'35.967"W	0.00	
10816.00†	90.118	359.903	7263.47	3427.01	3415.29	-370.73	40°03'14.675"N	104°34'35.969"W	0.00	
10916.00†	90.118	359.903	7263.27	3526.94	3515.29	-370.90	40°03'15.663"N	104°34'35.972"W	0.00	
11016.00†	90.118	359.903	7263.06	3626.87	3615.29	-371.07	40°03'16.651"N	104°34'35.974"W	0.00	
11116.00†	90.118	359.903	7262.85	3726.80	3715.29	-371.24	40°03'17.639"N	104°34'35.976"W	0.00	
11216.00†	90.118	359.903	7262.65	3826.73	3815.29	-371.41	40°03'18.628"N	104°34'35.978"W	0.00	
11316.00†	90.118	359.903	7262.44	3926.67	3915.29	-371.58	40°03'19.616"N	104°34'35.980"W	0.00	
11416.00†	90.118	359.903	7262.23	4026.60	4015.29	-371.75	40°03'20.604"N	104°34'35.983"W	0.00	
11516.00†	90.118	359.903	7262.03	4126.53	4115.29	-371.92	40°03'21.592"N	104°34'35.985"W	0.00	
11616.00†	90.118	359.903	7261.82	4226.46	4215.29	-372.09	40°03'22.580"N	104°34'35.987"W	0.00	
11716.00†	90.118	359.903	7261.61	4326.40	4315.29	-372.26	40°03'23.569"N	104°34'35.989"W	0.00	
11816.00†	90.118	359.903	7261.41	4426.33	4415.29	-372.42	40°03'24.557"N	104°34'35.991"W	0.00	
11916.00†	90.118	359.903	7261.20	4526.26	4515.29	-372.59	40°03'25.545"N	104°34'35.994"W	0.00	
12016.00†	90.118	359.903	7260.99	4626.19	4615.29	-372.76	40°03'26.533"N	104°34'35.996"W	0.00	
12116.00†	90.118	359.903	7260.79	4726.13	4715.29	-372.93	40°03'27.522"N	104°34'35.998"W	0.00	
12216.00†	90.118	359.903	7260.58	4826.06	4815.29	-373.10	40°03'28.510"N	104°34'36.000"W	0.00	
12316.00†	90.118	359.903	7260.37	4925.99	4915.29	-373.27	40°03'29.498"N	104°34'36.002"W	0.00	
12416.00†	90.118	359.903	7260.17	5025.92	5015.28	-373.44	40°03'30.486"N	104°34'36.005"W	0.00	
12516.00†	90.118	359.903	7259.96	5125.86	5115.28	-373.61	40°03'31.474"N	104°34'36.007"W	0.00	
12616.00†	90.118	359.903	7259.75	5225.79	5215.28	-373.78	40°03'32.463"N	104°34'36.009"W	0.00	
12716.00†	90.118	359.903	7259.55	5325.72	5315.28	-373.95	40°03'33.451"N	104°34'36.011"W	0.00	
12816.00†	90.118	359.903	7259.34	5425.65	5415.28	-374.12	40°03'34.439"N	104°34'36.013"W	0.00	
12916.00†	90.118	359.903	7259.13	5525.59	5515.28	-374.29	40°03'35.427"N	104°34'36.016"W	0.00	





# Planned Wellpath Report

WARNER 01N-64W-17-7H (REV-B.0, CODELL)

Page 5 of 6



## REFERENCE WELLPATH IDENTIFICATION

Operator	VERDAD OIL & GAS CORPORATION	Slot	SLOT#07 WARNER 01N-64W-17-7H (210'FSL & 2461'FWL, SEC.17)
Area	COLORADO	Well	WARNER 01N-64W-17-7H
Field	WELD COUNTY (NAD83/TN)	Wellbore	WARNER 01N-64W-17-7H PWB
Facility	SEC.17-T1N-R64W		

## WELLPATH DATA (180 stations) † = interpolated/extrapolated station

MD [ft]	Inclination [°]	Azimuth [°]	TVD [ft]	Vert Sect [ft]	North [ft]	East [ft]	Latitude	Longitude	DLS [°/100ft]	Comments
13016.00†	90.118	359.903	7258.93	5625.52	5615.28	-374.46	40°03'36.416"N	104°34'36.018"W	0.00	
13116.00†	90.118	359.903	7258.72	5725.45	5715.28	-374.63	40°03'37.404"N	104°34'36.020"W	0.00	
13216.00†	90.118	359.903	7258.51	5825.38	5815.28	-374.80	40°03'38.392"N	104°34'36.022"W	0.00	
13316.00†	90.118	359.903	7258.31	5925.32	5915.28	-374.97	40°03'39.380"N	104°34'36.024"W	0.00	
13416.00†	90.118	359.903	7258.10	6025.25	6015.28	-375.14	40°03'40.368"N	104°34'36.027"W	0.00	
13516.00†	90.118	359.903	7257.90	6125.18	6115.28	-375.31	40°03'41.357"N	104°34'36.029"W	0.00	
13616.00†	90.118	359.903	7257.69	6225.11	6215.28	-375.48	40°03'42.345"N	104°34'36.031"W	0.00	
13716.00†	90.118	359.903	7257.48	6325.05	6315.28	-375.65	40°03'43.333"N	104°34'36.033"W	0.00	
13816.00†	90.118	359.903	7257.28	6424.98	6415.28	-375.82	40°03'44.321"N	104°34'36.035"W	0.00	
13916.00†	90.118	359.903	7257.07	6524.91	6515.28	-375.99	40°03'45.309"N	104°34'36.038"W	0.00	
14016.00†	90.118	359.903	7256.86	6624.84	6615.28	-376.15	40°03'46.298"N	104°34'36.040"W	0.00	
14116.00†	90.118	359.903	7256.66	6724.78	6715.28	-376.32	40°03'47.286"N	104°34'36.042"W	0.00	
14216.00†	90.118	359.903	7256.45	6824.71	6815.28	-376.49	40°03'48.274"N	104°34'36.044"W	0.00	
14316.00†	90.118	359.903	7256.24	6924.64	6915.28	-376.66	40°03'49.262"N	104°34'36.046"W	0.00	
14416.00†	90.118	359.903	7256.04	7024.57	7015.28	-376.83	40°03'50.251"N	104°34'36.049"W	0.00	
14516.00†	90.118	359.903	7255.83	7124.51	7115.28	-377.00	40°03'51.239"N	104°34'36.051"W	0.00	
14616.00†	90.118	359.903	7255.62	7224.44	7215.28	-377.17	40°03'52.227"N	104°34'36.053"W	0.00	
14716.00†	90.118	359.903	7255.42	7324.37	7315.28	-377.34	40°03'53.215"N	104°34'36.055"W	0.00	
14816.00†	90.118	359.903	7255.21	7424.30	7415.28	-377.51	40°03'54.203"N	104°34'36.057"W	0.00	
14916.00†	90.118	359.903	7255.00	7524.23	7515.28	-377.68	40°03'55.192"N	104°34'36.060"W	0.00	
15016.00†	90.118	359.903	7254.80	7624.17	7615.28	-377.85	40°03'56.180"N	104°34'36.062"W	0.00	
15116.00†	90.118	359.903	7254.59	7724.10	7715.28	-378.02	40°03'57.168"N	104°34'36.064"W	0.00	
15216.00†	90.118	359.903	7254.38	7824.03	7815.27	-378.19	40°03'58.156"N	104°34'36.066"W	0.00	
15316.00†	90.118	359.903	7254.18	7923.96	7915.27	-378.36	40°03'59.145"N	104°34'36.069"W	0.00	
15416.00†	90.118	359.903	7253.97	8023.90	8015.27	-378.53	40°04'00.133"N	104°34'36.071"W	0.00	
15516.00†	90.118	359.903	7253.76	8123.83	8115.27	-378.70	40°04'01.121"N	104°34'36.073"W	0.00	
15616.00†	90.118	359.903	7253.56	8223.76	8215.27	-378.87	40°04'02.109"N	104°34'36.075"W	0.00	
15716.00†	90.118	359.903	7253.35	8323.69	8315.27	-379.04	40°04'03.097"N	104°34'36.077"W	0.00	
15816.00†	90.118	359.903	7253.14	8423.63	8415.27	-379.21	40°04'04.086"N	104°34'36.080"W	0.00	
15916.00†	90.118	359.903	7252.94	8523.56	8515.27	-379.38	40°04'05.074"N	104°34'36.082"W	0.00	
16016.00†	90.118	359.903	7252.73	8623.49	8615.27	-379.55	40°04'06.062"N	104°34'36.084"W	0.00	
16116.00†	90.118	359.903	7252.52	8723.42	8715.27	-379.72	40°04'07.050"N	104°34'36.086"W	0.00	
16216.00†	90.118	359.903	7252.32	8823.36	8815.27	-379.88	40°04'08.039"N	104°34'36.088"W	0.00	
16316.00†	90.118	359.903	7252.11	8923.29	8915.27	-380.05	40°04'09.027"N	104°34'36.091"W	0.00	
16416.00†	90.118	359.903	7251.90	9023.22	9015.27	-380.22	40°04'10.015"N	104°34'36.093"W	0.00	
16516.00†	90.118	359.903	7251.70	9123.15	9115.27	-380.39	40°04'11.003"N	104°34'36.095"W	0.00	
16616.00†	90.118	359.903	7251.49	9223.09	9215.27	-380.56	40°04'11.991"N	104°34'36.097"W	0.00	
16716.00†	90.118	359.903	7251.29	9323.02	9315.27	-380.73	40°04'12.980"N	104°34'36.099"W	0.00	
16816.00†	90.118	359.903	7251.08	9422.95	9415.27	-380.90	40°04'13.968"N	104°34'36.102"W	0.00	
16916.00†	90.118	359.903	7250.87	9522.88	9515.27	-381.07	40°04'14.956"N	104°34'36.104"W	0.00	
17016.00†	90.118	359.903	7250.67	9622.82	9615.27	-381.24	40°04'15.944"N	104°34'36.106"W	0.00	
17116.00†	90.118	359.903	7250.46	9722.75	9715.27	-381.41	40°04'16.932"N	104°34'36.108"W	0.00	
17216.00†	90.118	359.903	7250.25	9822.68	9815.27	-381.58	40°04'17.921"N	104°34'36.110"W	0.00	
17316.00†	90.118	359.903	7250.05	9922.61	9915.27	-381.75	40°04'18.909"N	104°34'36.113"W	0.00	
17338.17	90.118	359.903	7250.00†	9944.77	9937.44	-381.79	40°04'19.128"N	104°34'36.113"W	0.00	End of Tangent (J)



# Planned Wellpath Report

WARNER 01N-64W-17-7H (REV-B.0, CODELL)

Page 6 of 6



## REFERENCE WELLPATH IDENTIFICATION

Operator	VERDAD OIL & GAS CORPORATION	Slot	SLOT#07 WARNER 01N-64W-17-7H (210'FSL & 2461'FWL,SEC.17)
Area	COLORADO	Well	WARNER 01N-64W-17-7H
Field	WELD COUNTY (NAD83/TN)	Wellbore	WARNER 01N-64W-17-7H PWB
Facility	SEC.17-T1N-R64W		

## HOLE & CASING SECTIONS

- Ref Wellbore: WARNER 01N-64W-17-7H PWB      Ref Wellpath: WARNER 01N-64W-17-7H (REV-B.0, CODELL)

String/Diameter	Start MD [ft]	End MD [ft]	Interval [ft]	Start TVD [ft]	End TVD [ft]	Start N/S [ft]	Start E/W [ft]	End N/S [ft]	End E/W [ft]
13.5in Open Hole	16.00	1700.00	1684.00	16.00	1695.89	0.00	0.00	-78.97	-67.98
9.625in Casing Surface	16.00	1700.00	1684.00	16.00	1695.89	0.00	0.00	-78.97	-67.98
8.5in Open Hole	1700.00	17338.17	15638.17	1695.89	7250.00	-78.97	-67.98	9937.44	-381.79
5.5in Casing Production	16.00	17338.17	17322.17	16.00	7250.00	0.00	0.00	9937.44	-381.79

## TARGETS

Name	MD [ft]	TVD [ft]	North [ft]	East [ft]	Grid East [US ft]	Grid North [US ft]	Latitude	Longitude	Shape
2) WARNER 01N-64W-17-7H BHL (460'FNL & 2100'FWL,SEC.17, REV-2) (CODELL)	17338.17	7250.00	9937.44	-381.79	3258388.67	1270412.57	40°04'19.128"N	104°34'36.113"W	point
1) WARNER 01N-64W-17-7H LP (460'FSL & 2100'FWL,SEC.17, REV-2)(CODELL)	7656.01	7270.00	255.31	-365.37	3258506.04	1260731.52	40°02'43.447"N	104°34'35.900"W	point

## SURVEY PROGRAM -

Ref Wellbore: WARNER 01N-64W-17-7H PWB      Ref Wellpath: WARNER 01N-64W-17-7H (REV-B.0, CODELL)

Start MD [ft]	End MD [ft]	Positional Uncertainty Model	Log Name/Comment	Wellbore
16.00	1700.00	Custom BHI NaviTrak (Standard Rotating+Axial Corr) (Rockies 0.03Gt model)		WARNER 01N-64W-17-7H PWB
1700.00	17338.17	Custom BHI AutoTrak Curve (Axial Corr, Short spacing) (Rockies 0.03Gt model)		WARNER 01N-64W-17-7H PWB

~VERSION INFORMATION

VERS. 2.0 : CWLS LOG ASCII STANDARD-VERSION 2.0

WRAP. NO : ASCII DATA SECTION CONTAINS ONE ROW PER WELLPATH STATION

~WELL INFORMATION

#MNE	UNITS	DATA	DESCRIPTION
STRT	.ft	0.00	:START MD
STOP	.ft	17338.17	:STOP MD
STEP	.ft	0.0	:STEP (non-uniform increment)
NULL	.	-999.99	:NULL
COMP	.	VERDAD OIL & GAS CORPORATION	:OPERATOR
WELL	.	WARNER 01N-64W-17-7H	:WELL
FLD	.	WELD COUNTY (NAD83/TN)	:FIELD
LOC	.	COLORADO	:AREA (aka: Location)
CNTY	.	N/A	:COUNTY
STAT	.	N/A	:STATE
CTRY	.	N/A	:COUNTRY
SRVC	.	Baker Hughes	:CONTRACTOR
DATE	.	05/06/2017	:LOG REV DATE
API	.		:API NUMBER

~OTHER INFORMATION

#Software: wellArchitect(R) Version 5.0

#MNE	UNITS	DATA	DESCRIPTION
WPTYPE	.	PLANNED WELLPATH	:WELLPATH TYPE
FACILITY	.	SEC.17-T1N-R64W	:FACILITY
SLOT	.	SLOT#07 WARNER 01N-64W-17-7H (210'FSL &	2461'FWL,SEC.17):SLOT
WELLBORE	.	WARNER 01N-64W-17-7H PWB	:WELLBORE
WELLPATH	.	WARNER 01N-64W-17-7H (REV-B.0, CODELL)	:WELLPATH
MDREFPT	.	RIG (16'RKB +5067'GL) (RKB)	:MD REFERENCE POINT
TVDREFPT	.	RIG (16'RKB +5067'GL) (RKB)	:TVD REFERENCE POINT
LCLREFPT	.	SLOT	:LOCAL COORDINATE REFERENCE PT
VSAZIMUTH	.deg	357.80	:VERTICAL SECTION AZIMUTH
VSORIGN	.ft	0.00	:VERTICAL SECTION ORIGIN NORTH
VSORIGE	.ft	0.00	:VERTICAL SECTION ORIGIN EAST

~CURVE (WELLPATH) INFORMATION

#MNE	UNITS	DESCRIPTION
DEPT	.ft	:MEASURED DEPTH
INC	.deg	:INCLINATION
AZI	.deg	:AZIMUTH
TVD	.ft	:TRUE VERTICAL DEPTH
SECT	.ft	:CROSS SECTION (CURTAIN/VERTICAL)
LOCALN	.ft	:LOCAL NORTH
LOCALE	.ft	:LOCAL EAST



VERDAD\_WARNER\_01N-64W-17-7H\_\_REV-B.0\_\_CODELL\_\_05-24-17.las

LAT .deg :LATITUDE  
LONG .deg :LONGITUDE  
DLS .deg/100ft :DOGLEG SEVERITY

~ASCII DATA

0.00	0.00	220.72	0.00	0.00	0.00	0.00	40.0447011	-104.5753339	0.00
16.00	0.00	220.72	16.00	0.00	0.00	0.00	40.0447011	-104.5753339	0.00
116.00	0.00	220.72	116.00	0.00	0.00	0.00	40.0447011	-104.5753339	0.00
216.00	0.00	220.72	216.00	0.00	0.00	0.00	40.0447011	-104.5753339	0.00
300.00	0.00	220.72	300.00	0.00	0.00	0.00	40.0447011	-104.5753339	0.00
316.00	0.32	220.72	316.00	-0.03	-0.03	-0.03	40.0447010	-104.5753340	2.00
416.00	2.32	220.72	415.97	-1.72	-1.78	-1.53	40.0446962	-104.5753394	2.00
516.00	4.32	220.72	515.80	-5.96	-6.17	-5.31	40.0446842	-104.5753529	2.00
532.80	4.66	220.72	532.54	-6.92	-7.16	-6.17	40.0446814	-104.5753559	2.00
616.00	4.66	220.72	615.47	-11.87	-12.28	-10.57	40.0446674	-104.5753717	0.00
716.00	4.66	220.72	715.14	-17.81	-18.43	-15.87	40.0446505	-104.5753906	0.00
816.00	4.66	220.72	814.81	-23.76	-24.59	-21.17	40.0446336	-104.5754095	0.00
916.00	4.66	220.72	914.48	-29.70	-30.74	-26.46	40.0446167	-104.5754284	0.00
1016.00	4.66	220.72	1014.15	-35.64	-36.89	-31.76	40.0445998	-104.5754473	0.00
1116.00	4.66	220.72	1113.82	-41.59	-43.04	-37.05	40.0445830	-104.5754662	0.00
1216.00	4.66	220.72	1213.49	-47.53	-49.19	-42.35	40.0445661	-104.5754851	0.00
1316.00	4.66	220.72	1313.16	-53.48	-55.35	-47.64	40.0445492	-104.5755041	0.00
1416.00	4.66	220.72	1412.83	-59.42	-61.50	-52.94	40.0445323	-104.5755230	0.00
1516.00	4.66	220.72	1512.50	-65.36	-67.65	-58.24	40.0445154	-104.5755419	0.00
1616.00	4.66	220.72	1612.17	-71.31	-73.80	-63.53	40.0444985	-104.5755608	0.00
1716.00	4.66	220.72	1711.84	-77.25	-79.95	-68.83	40.0444816	-104.5755797	0.00
1816.00	4.66	220.72	1811.51	-83.19	-86.10	-74.12	40.0444648	-104.5755986	0.00
1916.00	4.66	220.72	1911.18	-89.14	-92.26	-79.42	40.0444479	-104.5756175	0.00
2016.00	4.66	220.72	2010.85	-95.08	-98.41	-84.71	40.0444310	-104.5756365	0.00
2116.00	4.66	220.72	2110.52	-101.03	-104.56	-90.01	40.0444141	-104.5756554	0.00
2216.00	4.66	220.72	2210.19	-106.97	-110.71	-95.31	40.0443972	-104.5756743	0.00
2316.00	4.66	220.72	2309.86	-112.91	-116.86	-100.60	40.0443803	-104.5756932	0.00
2416.00	4.66	220.72	2409.53	-118.86	-123.01	-105.90	40.0443634	-104.5757121	0.00
2516.00	4.66	220.72	2509.20	-124.80	-129.17	-111.19	40.0443465	-104.5757310	0.00
2616.00	4.66	220.72	2608.87	-130.75	-135.32	-116.49	40.0443297	-104.5757499	0.00
2716.00	4.66	220.72	2708.54	-136.69	-141.47	-121.78	40.0443128	-104.5757689	0.00
2816.00	4.66	220.72	2808.21	-142.63	-147.62	-127.08	40.0442959	-104.5757878	0.00
2916.00	4.66	220.72	2907.88	-148.58	-153.77	-132.38	40.0442790	-104.5758067	0.00
3016.00	4.66	220.72	3007.55	-154.52	-159.92	-137.67	40.0442621	-104.5758256	0.00
3116.00	4.66	220.72	3107.22	-160.47	-166.08	-142.97	40.0442452	-104.5758445	0.00
3216.00	4.66	220.72	3206.89	-166.41	-172.23	-148.26	40.0442283	-104.5758634	0.00
3316.00	4.66	220.72	3306.56	-172.35	-178.38	-153.56	40.0442114	-104.5758823	0.00
3416.00	4.66	220.72	3406.23	-178.30	-184.53	-158.85	40.0441946	-104.5759013	0.00
3516.00	4.66	220.72	3505.90	-184.24	-190.68	-164.15	40.0441777	-104.5759202	0.00
3616.00	4.66	220.72	3605.57	-190.18	-196.83	-169.45	40.0441608	-104.5759391	0.00
3716.00	4.66	220.72	3705.24	-196.13	-202.99	-174.74	40.0441439	-104.5759580	0.00
3816.00	4.66	220.72	3804.91	-202.07	-209.14	-180.04	40.0441270	-104.5759769	0.00
3916.00	4.66	220.72	3904.58	-208.02	-215.29	-185.33	40.0441101	-104.5759958	0.00

VERDAD\_WARNER\_01N-64W-17-7H\_REV-B.0\_CODELL\_05-24-17.las

4016.00	4.66	220.72	4004.25	-213.96	-221.44	-190.63	40.0440932	-104.5760147	0.00
4116.00	4.66	220.72	4103.92	-219.90	-227.59	-195.92	40.0440763	-104.5760337	0.00
4216.00	4.66	220.72	4203.59	-225.85	-233.75	-201.22	40.0440595	-104.5760526	0.00
4316.00	4.66	220.72	4303.26	-231.79	-239.90	-206.52	40.0440426	-104.5760715	0.00
4416.00	4.66	220.72	4402.93	-237.74	-246.05	-211.81	40.0440257	-104.5760904	0.00
4516.00	4.66	220.72	4502.60	-243.68	-252.20	-217.11	40.0440088	-104.5761093	0.00
4616.00	4.66	220.72	4602.27	-249.62	-258.35	-222.40	40.0439919	-104.5761282	0.00
4716.00	4.66	220.72	4701.94	-255.57	-264.50	-227.70	40.0439750	-104.5761471	0.00
4816.00	4.66	220.72	4801.61	-261.51	-270.66	-232.99	40.0439581	-104.5761661	0.00
4916.00	4.66	220.72	4901.28	-267.45	-276.81	-238.29	40.0439413	-104.5761850	0.00
5016.00	4.66	220.72	5000.95	-273.40	-282.96	-243.59	40.0439244	-104.5762039	0.00
5116.00	4.66	220.72	5100.62	-279.34	-289.11	-248.88	40.0439075	-104.5762228	0.00
5216.00	4.66	220.72	5200.29	-285.29	-295.26	-254.18	40.0438906	-104.5762417	0.00
5316.00	4.66	220.72	5299.96	-291.23	-301.41	-259.47	40.0438737	-104.5762606	0.00
5416.00	4.66	220.72	5399.63	-297.17	-307.57	-264.77	40.0438568	-104.5762795	0.00
5516.00	4.66	220.72	5499.30	-303.12	-313.72	-270.06	40.0438399	-104.5762985	0.00
5616.00	4.66	220.72	5598.97	-309.06	-319.87	-275.36	40.0438230	-104.5763174	0.00
5716.00	4.66	220.72	5698.64	-315.01	-326.02	-280.66	40.0438062	-104.5763363	0.00
5816.00	4.66	220.72	5798.31	-320.95	-332.17	-285.95	40.0437893	-104.5763552	0.00
5916.00	4.66	220.72	5897.98	-326.89	-338.32	-291.25	40.0437724	-104.5763741	0.00
6016.00	4.66	220.72	5997.65	-332.84	-344.48	-296.54	40.0437555	-104.5763930	0.00
6116.00	4.66	220.72	6097.32	-338.78	-350.63	-301.84	40.0437386	-104.5764119	0.00
6216.00	4.66	220.72	6196.99	-344.73	-356.78	-307.13	40.0437217	-104.5764309	0.00
6316.00	4.66	220.72	6296.66	-350.67	-362.93	-312.43	40.0437048	-104.5764498	0.00
6416.00	4.66	220.72	6396.33	-356.61	-369.08	-317.73	40.0436879	-104.5764687	0.00
6516.00	4.66	220.72	6496.00	-362.56	-375.23	-323.02	40.0436711	-104.5764876	0.00
6615.56	4.66	220.72	6595.24	-368.48	-381.36	-328.29	40.0436542	-104.5765064	0.00
6616.00	4.63	221.04	6595.67	-368.50	-381.39	-328.32	40.0436542	-104.5765065	9.00
6716.00	6.30	331.07	6695.41	-366.53	-379.62	-333.63	40.0436590	-104.5765255	9.00
6816.00	14.83	348.29	6793.65	-348.98	-362.25	-338.89	40.0437067	-104.5765443	9.00
6916.00	23.70	352.93	6887.96	-316.26	-329.71	-343.97	40.0437960	-104.5765624	9.00
7016.00	32.65	355.13	6976.02	-269.19	-282.79	-348.75	40.0439248	-104.5765795	9.00
7116.00	41.61	356.46	7055.67	-208.94	-222.66	-353.10	40.0440899	-104.5765950	9.00
7216.00	50.59	357.39	7124.94	-136.97	-150.78	-356.91	40.0442872	-104.5766087	9.00
7316.00	59.57	358.10	7182.14	-55.06	-68.94	-360.11	40.0445119	-104.5766201	9.00
7416.00	68.55	358.70	7225.84	34.76	20.86	-362.60	40.0447584	-104.5766290	9.00
7516.00	77.54	359.22	7254.98	130.30	116.40	-364.32	40.0450206	-104.5766351	9.00
7616.00	86.52	359.71	7268.83	229.19	215.33	-365.24	40.0452922	-104.5766384	9.00
7656.01	90.12	359.90	7270.00	269.15	255.31	-365.37	40.0454019	-104.5766389	9.00
7716.00	90.12	359.90	7269.88	329.10	315.30	-365.47	40.0455666	-104.5766393	0.00
7816.00	90.12	359.90	7269.67	429.03	415.30	-365.64	40.0458411	-104.5766399	0.00
7916.00	90.12	359.90	7269.46	528.96	515.30	-365.81	40.0461156	-104.5766405	0.00
8016.00	90.12	359.90	7269.26	628.90	615.30	-365.98	40.0463901	-104.5766411	0.00
8116.00	90.12	359.90	7269.05	728.83	715.30	-366.15	40.0466647	-104.5766417	0.00
8216.00	90.12	359.90	7268.84	828.76	815.30	-366.32	40.0469392	-104.5766423	0.00
8316.00	90.12	359.90	7268.64	928.69	915.30	-366.49	40.0472137	-104.5766429	0.00
8416.00	90.12	359.90	7268.43	1028.63	1015.30	-366.66	40.0474882	-104.5766435	0.00
8516.00	90.12	359.90	7268.22	1128.56	1115.30	-366.83	40.0477627	-104.5766441	0.00

VERDAD\_WARNER\_01N-64W-17-7H\_REV-B.0\_CODELL\_05-24-17.las

8616.00	90.12	359.90	7268.02	1228.49	1215.30	-367.00	40.0480372	-104.5766448	0.00
8716.00	90.12	359.90	7267.81	1328.42	1315.30	-367.17	40.0483117	-104.5766454	0.00
8816.00	90.12	359.90	7267.60	1428.36	1415.30	-367.34	40.0485862	-104.5766460	0.00
8916.00	90.12	359.90	7267.40	1528.29	1515.30	-367.51	40.0488607	-104.5766466	0.00
9016.00	90.12	359.90	7267.19	1628.22	1615.30	-367.68	40.0491352	-104.5766472	0.00
9116.00	90.12	359.90	7266.98	1728.15	1715.30	-367.85	40.0494097	-104.5766478	0.00
9216.00	90.12	359.90	7266.78	1828.09	1815.30	-368.02	40.0496842	-104.5766484	0.00
9316.00	90.12	359.90	7266.57	1928.02	1915.30	-368.19	40.0499587	-104.5766490	0.00
9416.00	90.12	359.90	7266.36	2027.95	2015.30	-368.36	40.0502332	-104.5766496	0.00
9516.00	90.12	359.90	7266.16	2127.88	2115.30	-368.52	40.0505077	-104.5766503	0.00
9616.00	90.12	359.90	7265.95	2227.82	2215.29	-368.69	40.0507822	-104.5766509	0.00
9716.00	90.12	359.90	7265.74	2327.75	2315.29	-368.86	40.0510567	-104.5766515	0.00
9816.00	90.12	359.90	7265.54	2427.68	2415.29	-369.03	40.0513312	-104.5766521	0.00
9916.00	90.12	359.90	7265.33	2527.61	2515.29	-369.20	40.0516058	-104.5766527	0.00
10016.00	90.12	359.90	7265.13	2627.55	2615.29	-369.37	40.0518803	-104.5766533	0.00
10116.00	90.12	359.90	7264.92	2727.48	2715.29	-369.54	40.0521548	-104.5766539	0.00
10216.00	90.12	359.90	7264.71	2827.41	2815.29	-369.71	40.0524293	-104.5766545	0.00
10316.00	90.12	359.90	7264.51	2927.34	2915.29	-369.88	40.0527038	-104.5766551	0.00
10416.00	90.12	359.90	7264.30	3027.28	3015.29	-370.05	40.0529783	-104.5766558	0.00
10516.00	90.12	359.90	7264.09	3127.21	3115.29	-370.22	40.0532528	-104.5766564	0.00
10616.00	90.12	359.90	7263.89	3227.14	3215.29	-370.39	40.0535273	-104.5766570	0.00
10716.00	90.12	359.90	7263.68	3327.07	3315.29	-370.56	40.0538018	-104.5766576	0.00
10816.00	90.12	359.90	7263.47	3427.01	3415.29	-370.73	40.0540763	-104.5766582	0.00
10916.00	90.12	359.90	7263.27	3526.94	3515.29	-370.90	40.0543508	-104.5766588	0.00
11016.00	90.12	359.90	7263.06	3626.87	3615.29	-371.07	40.0546253	-104.5766594	0.00
11116.00	90.12	359.90	7262.85	3726.80	3715.29	-371.24	40.0548998	-104.5766600	0.00
11216.00	90.12	359.90	7262.65	3826.73	3815.29	-371.41	40.0551743	-104.5766606	0.00
11316.00	90.12	359.90	7262.44	3926.67	3915.29	-371.58	40.0554488	-104.5766612	0.00
11416.00	90.12	359.90	7262.23	4026.60	4015.29	-371.75	40.0557233	-104.5766619	0.00
11516.00	90.12	359.90	7262.03	4126.53	4115.29	-371.92	40.0559978	-104.5766625	0.00
11616.00	90.12	359.90	7261.82	4226.46	4215.29	-372.09	40.0562723	-104.5766631	0.00
11716.00	90.12	359.90	7261.61	4326.40	4315.29	-372.26	40.0565469	-104.5766637	0.00
11816.00	90.12	359.90	7261.41	4426.33	4415.29	-372.42	40.0568214	-104.5766643	0.00
11916.00	90.12	359.90	7261.20	4526.26	4515.29	-372.59	40.0570959	-104.5766649	0.00
12016.00	90.12	359.90	7260.99	4626.19	4615.29	-372.76	40.0573704	-104.5766655	0.00
12116.00	90.12	359.90	7260.79	4726.13	4715.29	-372.93	40.0576449	-104.5766661	0.00
12216.00	90.12	359.90	7260.58	4826.06	4815.29	-373.10	40.0579194	-104.5766667	0.00
12316.00	90.12	359.90	7260.37	4925.99	4915.29	-373.27	40.0581939	-104.5766674	0.00
12416.00	90.12	359.90	7260.17	5025.92	5015.28	-373.44	40.0584684	-104.5766680	0.00
12516.00	90.12	359.90	7259.96	5125.86	5115.28	-373.61	40.0587429	-104.5766686	0.00
12616.00	90.12	359.90	7259.75	5225.79	5215.28	-373.78	40.0590174	-104.5766692	0.00
12716.00	90.12	359.90	7259.55	5325.72	5315.28	-373.95	40.0592919	-104.5766698	0.00
12816.00	90.12	359.90	7259.34	5425.65	5415.28	-374.12	40.0595664	-104.5766704	0.00
12916.00	90.12	359.90	7259.13	5525.59	5515.28	-374.29	40.0598409	-104.5766710	0.00
13016.00	90.12	359.90	7258.93	5625.52	5615.28	-374.46	40.0601154	-104.5766716	0.00
13116.00	90.12	359.90	7258.72	5725.45	5715.28	-374.63	40.0603899	-104.5766722	0.00
13216.00	90.12	359.90	7258.51	5825.38	5815.28	-374.80	40.0606644	-104.5766729	0.00
13316.00	90.12	359.90	7258.31	5925.32	5915.28	-374.97	40.0609389	-104.5766735	0.00

VERDAD\_WARNER\_01N-64W-17-7H\_REV-B.0\_CODELL\_05-24-17.las

13416.00	90.12	359.90	7258.10	6025.25	6015.28	-375.14	40.0612134	-104.5766741	0.00
13516.00	90.12	359.90	7257.90	6125.18	6115.28	-375.31	40.0614880	-104.5766747	0.00
13616.00	90.12	359.90	7257.69	6225.11	6215.28	-375.48	40.0617625	-104.5766753	0.00
13716.00	90.12	359.90	7257.48	6325.05	6315.28	-375.65	40.0620370	-104.5766759	0.00
13816.00	90.12	359.90	7257.28	6424.98	6415.28	-375.82	40.0623115	-104.5766765	0.00
13916.00	90.12	359.90	7257.07	6524.91	6515.28	-375.99	40.0625860	-104.5766771	0.00
14016.00	90.12	359.90	7256.86	6624.84	6615.28	-376.15	40.0628605	-104.5766777	0.00
14116.00	90.12	359.90	7256.66	6724.78	6715.28	-376.32	40.0631350	-104.5766784	0.00
14216.00	90.12	359.90	7256.45	6824.71	6815.28	-376.49	40.0634095	-104.5766790	0.00
14316.00	90.12	359.90	7256.24	6924.64	6915.28	-376.66	40.0636840	-104.5766796	0.00
14416.00	90.12	359.90	7256.04	7024.57	7015.28	-376.83	40.0639585	-104.5766802	0.00
14516.00	90.12	359.90	7255.83	7124.51	7115.28	-377.00	40.0642330	-104.5766808	0.00
14616.00	90.12	359.90	7255.62	7224.44	7215.28	-377.17	40.0645075	-104.5766814	0.00
14716.00	90.12	359.90	7255.42	7324.37	7315.28	-377.34	40.0647820	-104.5766820	0.00
14816.00	90.12	359.90	7255.21	7424.30	7415.28	-377.51	40.0650565	-104.5766826	0.00
14916.00	90.12	359.90	7255.00	7524.23	7515.28	-377.68	40.0653310	-104.5766832	0.00
15016.00	90.12	359.90	7254.80	7624.17	7615.28	-377.85	40.0656055	-104.5766839	0.00
15116.00	90.12	359.90	7254.59	7724.10	7715.28	-378.02	40.0658800	-104.5766845	0.00
15216.00	90.12	359.90	7254.38	7824.03	7815.27	-378.19	40.0661545	-104.5766851	0.00
15316.00	90.12	359.90	7254.18	7923.96	7915.27	-378.36	40.0664290	-104.5766857	0.00
15416.00	90.12	359.90	7253.97	8023.90	8015.27	-378.53	40.0667035	-104.5766863	0.00
15516.00	90.12	359.90	7253.76	8123.83	8115.27	-378.70	40.0669781	-104.5766869	0.00
15616.00	90.12	359.90	7253.56	8223.76	8215.27	-378.87	40.0672526	-104.5766875	0.00
15716.00	90.12	359.90	7253.35	8323.69	8315.27	-379.04	40.0675271	-104.5766881	0.00
15816.00	90.12	359.90	7253.14	8423.63	8415.27	-379.21	40.0678016	-104.5766888	0.00
15916.00	90.12	359.90	7252.94	8523.56	8515.27	-379.38	40.0680761	-104.5766894	0.00
16016.00	90.12	359.90	7252.73	8623.49	8615.27	-379.55	40.0683506	-104.5766900	0.00
16116.00	90.12	359.90	7252.52	8723.42	8715.27	-379.72	40.0686251	-104.5766906	0.00
16216.00	90.12	359.90	7252.32	8823.36	8815.27	-379.88	40.0688996	-104.5766912	0.00
16316.00	90.12	359.90	7252.11	8923.29	8915.27	-380.05	40.0691741	-104.5766918	0.00
16416.00	90.12	359.90	7251.90	9023.22	9015.27	-380.22	40.0694486	-104.5766924	0.00
16516.00	90.12	359.90	7251.70	9123.15	9115.27	-380.39	40.0697231	-104.5766930	0.00
16616.00	90.12	359.90	7251.49	9223.09	9215.27	-380.56	40.0699976	-104.5766936	0.00
16716.00	90.12	359.90	7251.29	9323.02	9315.27	-380.73	40.0702721	-104.5766943	0.00
16816.00	90.12	359.90	7251.08	9422.95	9415.27	-380.90	40.0705466	-104.5766949	0.00
16916.00	90.12	359.90	7250.87	9522.88	9515.27	-381.07	40.0708211	-104.5766955	0.00
17016.00	90.12	359.90	7250.67	9622.82	9615.27	-381.24	40.0710956	-104.5766961	0.00
17116.00	90.12	359.90	7250.46	9722.75	9715.27	-381.41	40.0713701	-104.5766967	0.00
17216.00	90.12	359.90	7250.25	9822.68	9815.27	-381.58	40.0716446	-104.5766973	0.00
17316.00	90.12	359.90	7250.05	9922.61	9915.27	-381.75	40.0719191	-104.5766979	0.00
17338.17	90.12	359.90	7250.00	9944.77	9937.44	-381.79	40.0719800	-104.5766981	0.00