

Location:	COLORADO	Slot:	SLOT#06 WARNER 01N-64W-17-6H (210°FSL & 2441°FWL,SEC.17)
Field:	WELD COUNTY (NAD83/TN)	Well:	WARNER 01N-64W-17-6H
Facility:	SEC.17-T1N-R64W	Wellbore:	WARNER 01N-64W-17-6H PWB

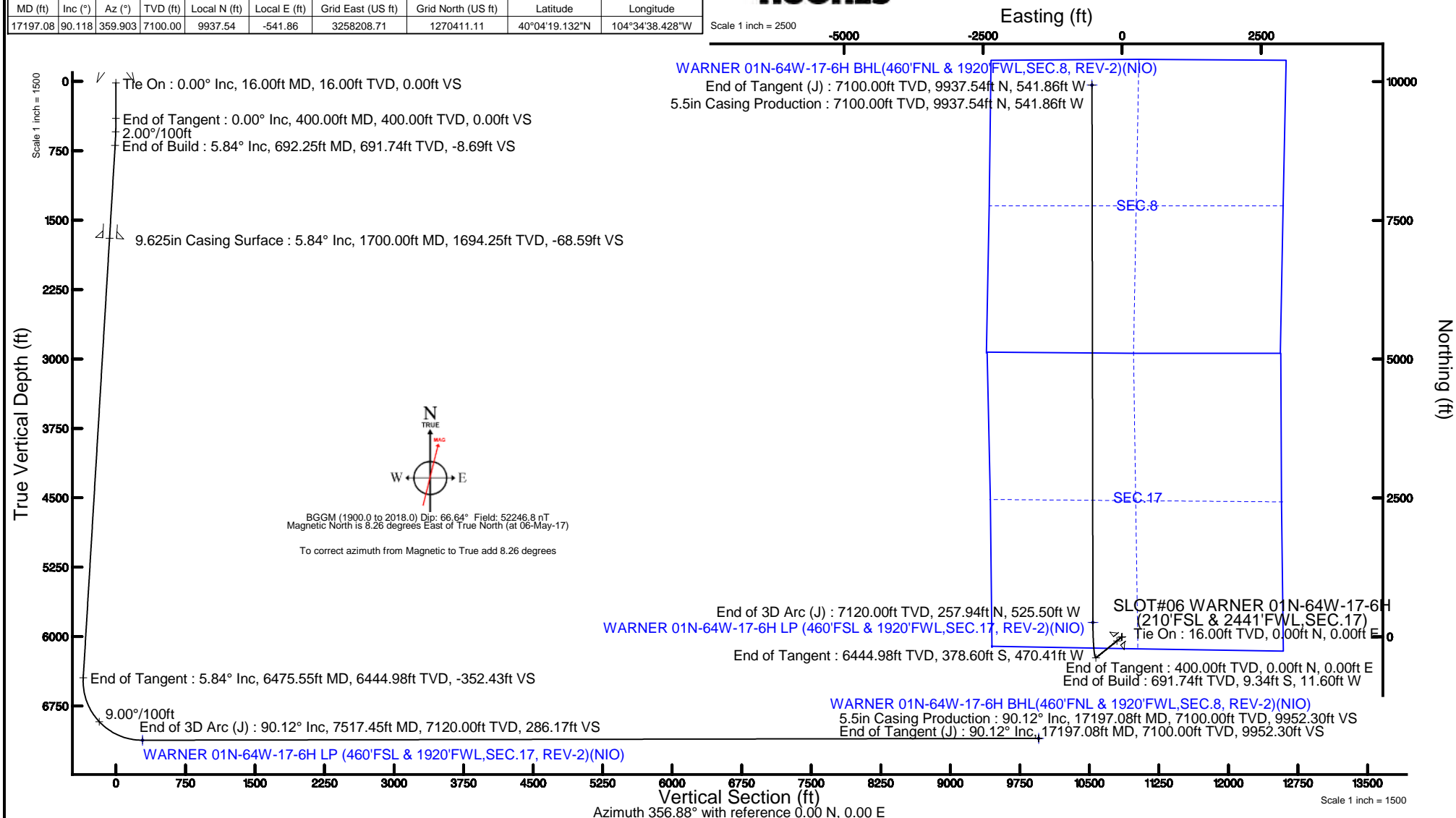


Facility Name				Grid East (US ft)	Grid North (US ft)	Latitude	Longitude
SEC.17-T1N-R64W				3258754.187	1260480.616	40°02'40.942"N	104°34'32.743"W
Slot	Local N (ft)	Local E (ft)	Grid East (US ft)	Grid North (US ft)	Latitude	Longitude	
SLOT#06 WARNER 01N-64W-17-6H (210FSL & 2441FWL_SEC.17)	-1.52	99.94	3258854.131	1260480.140	40°02'40.927"N	104°34'31.458"W	
RIG (16RKB + 5067GL) (RKB) to Mud line (At Slot: SLOT#06 WARNER 01N-64W-17-6H (210FSL & 2441FWL_SEC.17))						5083ft	
Mean Sea Level to Mud line (At Slot: SLOT#06 WARNER 01N-64W-17-6H (210FSL & 2441FWL_SEC.17))						0ft	
RIG (16RKB + 5067GL) (RKB) to Mean Sea Level						5083ft	

MD (ft)	Inc (°)	Az (°)	TVD (ft)	Local N (ft)	Local E (ft)	Grid East (US ft)	Grid North (US ft)	Latitude	Longitude
17197.08	90.118	359.903	7100.00	9937.54	-541.86	3258208.71	1270411.11	40°04'19.132"N	104°34'38.428"W

Design Comment	MD (ft)	Inc (°)	Az (°)	TVD (ft)	Local N (ft)	Local E (ft)	DLS (°/100ft)	VS (ft)
Tie On	16.00	0.000	231.172	16.00	0.00	0.00	0.00	0.00
End of Tangent	400.00	0.000	231.172	400.00	0.00	0.00	0.00	0.00
End of Build	692.25	5.845	231.172	691.74	-9.34	-11.60	2.00	-8.69
End of Tangent	6475.55	5.845	231.172	6444.98	-378.60	-470.41	0.00	-352.43
End of 3D Arc (J)	7517.45	90.118	359.903	7120.00	257.94	-525.50	9.00	286.17
End of Tangent (J)	17197.08	90.118	359.903	17100.00	9937.54	-541.86	0.00	9952.30

Start MD (ft)	End MD (ft)	Tool	Model	Log Name/Comment	Wellbore
16.00	1700.00	BHI NavTrak	Custom BHI NavTrak (Standard Rotating+Axial Corr) (Rockies 0.03GI model)		WARNER 01N-64W-17-6H PWB
1700.00	17197.08	BHI AutoTrak Curve	Custom BHI AutoTrak Curve (Axial Corr. Short spacing) (Rockies 0.03GI model)		WARNER 01N-64W-17-6H PWB
<p>Plot reference wellpath is WARNER 01N-64W-17-6H (REV-B.0) PWP</p> <p>True vertical depths are referenced to RIG (16RKB + 5067'GL) (RKB)</p> <p>Measured depths are referenced to RIG (16RKB + 5067'GL) (RKB)</p> <p>RIG (16RKB + 5067'GL) (RKB) to Mean Sea Level: 5083 feet</p> <p>Mean Sea Level to Mud line (At Slot: SLOT#06 WARNER 01N-64W-17-6H (210FSL & 2441'FWL SEC.17)): 0 feet</p> <p>Coordinates are in feet referenced to Slot</p>					
				<p>Grid System: NAD83 / Lambert Colorado SP, Northern Zone 501), US feet</p> <p>' = Wellpath was transformed from a different geodetic datum</p> <p>North Reference: True north</p> <p>Scale: True distance</p> <p>Depths are in feet</p> <p>Created by: cooldkdm on 2017-05-24</p> <p>Database: W.A. Denver</p>	





Planned Wellpath Report

WARNER 01N-64W-17-6H (REV-B.0) PWP

Page 1 of 6



REFERENCE WELLPATH IDENTIFICATION			
Operator	VERDAD OIL & GAS CORPORATION	Slot	SLOT#06 WARNER 01N-64W-17-6H (210'FSL & 2441'FWL, SEC.17)
Area	COLORADO	Well	WARNER 01N-64W-17-6H
Field	WELD COUNTY (NAD83/TN)	Wellbore	WARNER 01N-64W-17-6H PWB
Facility	SEC.17-T1N-R64W		

REPORT SETUP INFORMATION			
Projection System	NAD83 / Lambert Colorado SP, Northern Zone (501), US feet	Software System	WellArchitect® 5.0
North Reference	True	User	Cookdanm
Scale	0.999963	Report Generated	24-May-17 at 1:26:00 PM
Convergence at slot	0.60° East	Database/Source file	WA_Denver/WARNER_01N-64W-17-6H__REV-B.0__PWP_.xml

WELLPATH LOCATION						
	Local coordinates		Grid coordinates		Geographic coordinates	
	North[ft]	East[ft]	Easting[US ft]	Northing[US ft]	Latitude	Longitude
Slot Location	-1.52	99.94	3258854.13	1260480.14	40°02'40.927"N	104°34'31.458"W
Facility Reference Pt			3258754.19	1260480.62	40°02'40.942"N	104°34'32.743"W
Field Reference Pt			3242930.13	1254608.21	40°01'44.490"N	104°37'56.946"W

WELLPATH DATUM			
Calculation method	Minimum curvature	RIG (16'RKB + 5067'GL) (RKB) to Facility Vertical Datum	5083.00ft
Horizontal Reference Pt	Slot	RIG (16'RKB + 5067'GL) (RKB) to Mean Sea Level	5083.00ft
Vertical Reference Pt	RIG (16'RKB + 5067'GL) (RKB)	RIG (16'RKB + 5067'GL) (RKB) to Mud Line at Slot (SLOT#06 WARNER 01N-64W-17-6H (210'FSL & 2441'FWL, SEC.17))	5083.00ft
MD Reference Pt	RIG (16'RKB + 5067'GL) (RKB)	Section Origin	N 0.00, E 0.00 ft
Field Vertical Reference	Mean Sea Level	Section Azimuth	356.88°



Planned Wellpath Report

WARNER 01N-64W-17-6H (REV-B.0) PWP

Page 2 of 6



REFERENCE WELLPATH IDENTIFICATION

Operator	VERDAD OIL & GAS CORPORATION	Slot	SLOT#06 WARNER 01N-64W-17-6H (210'FSL & 2441'FWL, SEC.17)
Area	COLORADO	Well	WARNER 01N-64W-17-6H
Field	WELD COUNTY (NAD83/TN)	Wellbore	WARNER 01N-64W-17-6H PWB
Facility	SEC.17-T1N-R64W		

WELLPATH DATA (178 stations) † = interpolated/extrapolated station

MD [ft]	Inclination [°]	Azimuth [°]	TVD [ft]	Vert Sect [ft]	North [ft]	East [ft]	Latitude	Longitude	DLS [°/100ft]	Comments
0.00†	0.000	231.172	0.00	0.00	0.00	0.00	40°02'40.927"N	104°34'31.458"W	0.00	
16.00	0.000	231.172	16.00	0.00	0.00	0.00	40°02'40.927"N	104°34'31.458"W	0.00	Tie On
116.00†	0.000	231.172	116.00	0.00	0.00	0.00	40°02'40.927"N	104°34'31.458"W	0.00	
216.00†	0.000	231.172	216.00	0.00	0.00	0.00	40°02'40.927"N	104°34'31.458"W	0.00	
316.00†	0.000	231.172	316.00	0.00	0.00	0.00	40°02'40.927"N	104°34'31.458"W	0.00	
400.00	0.000	231.172	400.00	0.00	0.00	0.00	40°02'40.927"N	104°34'31.458"W	0.00	End of Tangent
416.00†	0.320	231.172	416.00	-0.03	-0.03	-0.03	40°02'40.927"N	104°34'31.458"W	2.00	
516.00†	2.320	231.172	515.97	-1.37	-1.47	-1.83	40°02'40.912"N	104°34'31.482"W	2.00	
616.00†	4.320	231.172	615.80	-4.75	-5.10	-6.34	40°02'40.877"N	104°34'31.540"W	2.00	
692.25	5.845	231.172	691.74	-8.69	-9.34	-11.60	40°02'40.835"N	104°34'31.607"W	2.00	End of Build
716.00†	5.845	231.172	715.37	-10.10	-10.85	-13.49	40°02'40.820"N	104°34'31.631"W	0.00	
816.00†	5.845	231.172	814.85	-16.05	-17.24	-21.42	40°02'40.757"N	104°34'31.733"W	0.00	
916.00†	5.845	231.172	914.33	-21.99	-23.62	-29.35	40°02'40.694"N	104°34'31.835"W	0.00	
1016.00†	5.845	231.172	1013.81	-27.94	-30.01	-37.29	40°02'40.630"N	104°34'31.937"W	0.00	
1116.00†	5.845	231.172	1113.29	-33.88	-36.39	-45.22	40°02'40.567"N	104°34'32.039"W	0.00	
1216.00†	5.845	231.172	1212.77	-39.82	-42.78	-53.15	40°02'40.504"N	104°34'32.141"W	0.00	
1316.00†	5.845	231.172	1312.25	-45.77	-49.16	-61.09	40°02'40.441"N	104°34'32.243"W	0.00	
1416.00†	5.845	231.172	1411.73	-51.71	-55.55	-69.02	40°02'40.378"N	104°34'32.345"W	0.00	
1516.00†	5.845	231.172	1511.21	-57.65	-61.93	-76.95	40°02'40.315"N	104°34'32.447"W	0.00	
1616.00†	5.845	231.172	1610.69	-63.60	-68.32	-84.89	40°02'40.252"N	104°34'32.549"W	0.00	
1716.00†	5.845	231.172	1710.17	-69.54	-74.70	-92.82	40°02'40.189"N	104°34'32.651"W	0.00	
1816.00†	5.845	231.172	1809.65	-75.48	-81.09	-100.75	40°02'40.126"N	104°34'32.753"W	0.00	
1916.00†	5.845	231.172	1909.13	-81.43	-87.47	-108.69	40°02'40.063"N	104°34'32.855"W	0.00	
2016.00†	5.845	231.172	2008.61	-87.37	-93.86	-116.62	40°02'39.999"N	104°34'32.957"W	0.00	
2116.00†	5.845	231.172	2108.09	-93.31	-100.24	-124.55	40°02'39.936"N	104°34'33.060"W	0.00	
2216.00†	5.845	231.172	2207.57	-99.26	-106.63	-132.49	40°02'39.873"N	104°34'33.162"W	0.00	
2316.00†	5.845	231.172	2307.05	-105.20	-113.01	-140.42	40°02'39.810"N	104°34'33.264"W	0.00	
2416.00†	5.845	231.172	2406.53	-111.15	-119.40	-148.35	40°02'39.747"N	104°34'33.366"W	0.00	
2516.00†	5.845	231.172	2506.01	-117.09	-125.78	-156.29	40°02'39.684"N	104°34'33.468"W	0.00	
2616.00†	5.845	231.172	2605.49	-123.03	-132.17	-164.22	40°02'39.621"N	104°34'33.570"W	0.00	
2716.00†	5.845	231.172	2704.97	-128.98	-138.55	-172.15	40°02'39.558"N	104°34'33.672"W	0.00	
2816.00†	5.845	231.172	2804.45	-134.92	-144.94	-180.09	40°02'39.495"N	104°34'33.774"W	0.00	
2916.00†	5.845	231.172	2903.93	-140.86	-151.32	-188.02	40°02'39.432"N	104°34'33.876"W	0.00	
3016.00†	5.845	231.172	3003.41	-146.81	-157.71	-195.95	40°02'39.368"N	104°34'33.978"W	0.00	
3116.00†	5.845	231.172	3102.89	-152.75	-164.09	-203.89	40°02'39.305"N	104°34'34.080"W	0.00	
3216.00†	5.845	231.172	3202.37	-158.69	-170.48	-211.82	40°02'39.242"N	104°34'34.182"W	0.00	
3316.00†	5.845	231.172	3301.85	-164.64	-176.86	-219.75	40°02'39.179"N	104°34'34.284"W	0.00	
3416.00†	5.845	231.172	3401.33	-170.58	-183.25	-227.69	40°02'39.116"N	104°34'34.386"W	0.00	
3516.00†	5.845	231.172	3500.81	-176.53	-189.63	-235.62	40°02'39.053"N	104°34'34.488"W	0.00	
3616.00†	5.845	231.172	3600.29	-182.47	-196.02	-243.55	40°02'38.990"N	104°34'34.590"W	0.00	
3716.00†	5.845	231.172	3699.77	-188.41	-202.40	-251.49	40°02'38.927"N	104°34'34.692"W	0.00	
3816.00†	5.845	231.172	3799.25	-194.36	-208.79	-259.42	40°02'38.864"N	104°34'34.794"W	0.00	
3916.00†	5.845	231.172	3898.73	-200.30	-215.17	-267.35	40°02'38.801"N	104°34'34.896"W	0.00	
4016.00†	5.845	231.172	3998.21	-206.24	-221.56	-275.29	40°02'38.737"N	104°34'34.998"W	0.00	
4116.00†	5.845	231.172	4097.69	-212.19	-227.94	-283.22	40°02'38.674"N	104°34'35.100"W	0.00	



Planned Wellpath Report

WARNER 01N-64W-17-6H (REV-B.0) PWP

Page 3 of 6



REFERENCE WELLPATH IDENTIFICATION

Operator	VERDAD OIL & GAS CORPORATION	Slot	SLOT#06 WARNER 01N-64W-17-6H (210'FSL & 2441'FWL, SEC.17)
Area	COLORADO	Well	WARNER 01N-64W-17-6H
Field	WELD COUNTY (NAD83/TN)	Wellbore	WARNER 01N-64W-17-6H PWB
Facility	SEC.17-T1N-R64W		

WELLPATH DATA (178 stations) † = interpolated/extrapolated station

MD [ft]	Inclination [°]	Azimuth [°]	TVD [ft]	Vert Sect [ft]	North [ft]	East [ft]	Latitude	Longitude	DLS [°/100ft]	Comments
4216.00†	5.845	231.172	4197.17	-218.13	-234.33	-291.15	40°02'38.611"N	104°34'35.202"W	0.00	
4316.00†	5.845	231.172	4296.65	-224.07	-240.71	-299.09	40°02'38.548"N	104°34'35.304"W	0.00	
4416.00†	5.845	231.172	4396.13	-230.02	-247.10	-307.02	40°02'38.485"N	104°34'35.406"W	0.00	
4516.00†	5.845	231.172	4495.61	-235.96	-253.48	-314.95	40°02'38.422"N	104°34'35.508"W	0.00	
4616.00†	5.845	231.172	4595.09	-241.90	-259.87	-322.89	40°02'38.359"N	104°34'35.610"W	0.00	
4716.00†	5.845	231.172	4694.57	-247.85	-266.26	-330.82	40°02'38.296"N	104°34'35.712"W	0.00	
4816.00†	5.845	231.172	4794.05	-253.79	-272.64	-338.75	40°02'38.233"N	104°34'35.814"W	0.00	
4916.00†	5.845	231.172	4893.53	-259.74	-279.03	-346.69	40°02'38.170"N	104°34'35.916"W	0.00	
5016.00†	5.845	231.172	4993.02	-265.68	-285.41	-354.62	40°02'38.106"N	104°34'36.018"W	0.00	
5116.00†	5.845	231.172	5092.50	-271.62	-291.80	-362.55	40°02'38.043"N	104°34'36.120"W	0.00	
5216.00†	5.845	231.172	5191.98	-277.57	-298.18	-370.49	40°02'37.980"N	104°34'36.222"W	0.00	
5316.00†	5.845	231.172	5291.46	-283.51	-304.57	-378.42	40°02'37.917"N	104°34'36.324"W	0.00	
5416.00†	5.845	231.172	5390.94	-289.45	-310.95	-386.35	40°02'37.854"N	104°34'36.426"W	0.00	
5516.00†	5.845	231.172	5490.42	-295.40	-317.34	-394.29	40°02'37.791"N	104°34'36.528"W	0.00	
5616.00†	5.845	231.172	5589.90	-301.34	-323.72	-402.22	40°02'37.728"N	104°34'36.630"W	0.00	
5716.00†	5.845	231.172	5689.38	-307.28	-330.11	-410.15	40°02'37.665"N	104°34'36.732"W	0.00	
5816.00†	5.845	231.172	5788.86	-313.23	-336.49	-418.09	40°02'37.602"N	104°34'36.834"W	0.00	
5916.00†	5.845	231.172	5888.34	-319.17	-342.88	-426.02	40°02'37.539"N	104°34'36.936"W	0.00	
6016.00†	5.845	231.172	5987.82	-325.12	-349.26	-433.95	40°02'37.475"N	104°34'37.038"W	0.00	
6116.00†	5.845	231.172	6087.30	-331.06	-355.65	-441.89	40°02'37.412"N	104°34'37.140"W	0.00	
6216.00†	5.845	231.172	6186.78	-337.00	-362.03	-449.82	40°02'37.349"N	104°34'37.242"W	0.00	
6316.00†	5.845	231.172	6286.26	-342.95	-368.42	-457.75	40°02'37.286"N	104°34'37.344"W	0.00	
6416.00†	5.845	231.172	6385.74	-348.89	-374.80	-465.69	40°02'37.223"N	104°34'37.446"W	0.00	
6475.55	5.845	231.172	6444.98	-352.43	-378.60	-470.41	40°02'37.186"N	104°34'37.506"W	0.00	End of Tangent
6516.00†	4.566	269.745	6485.27	-353.55	-379.90	-473.63	40°02'37.173"N	104°34'37.548"W	9.00	
6616.00†	10.073	333.176	6584.55	-345.33	-372.10	-481.57	40°02'37.250"N	104°34'37.650"W	9.00	
6716.00†	18.540	346.117	6681.38	-321.65	-348.81	-489.35	40°02'37.480"N	104°34'37.750"W	9.00	
6816.00†	27.343	351.009	6773.39	-283.11	-310.62	-496.77	40°02'37.857"N	104°34'37.845"W	9.00	
6916.00†	36.238	353.638	6858.30	-230.65	-258.45	-503.64	40°02'38.373"N	104°34'37.934"W	9.00	
7016.00†	45.170	355.340	6934.04	-165.56	-193.60	-509.81	40°02'39.014"N	104°34'38.013"W	9.00	
7116.00†	54.120	356.582	6998.73	-89.44	-117.66	-515.12	40°02'39.764"N	104°34'38.081"W	9.00	
7216.00†	63.081	357.570	7050.77	-4.17	-32.50	-519.44	40°02'40.606"N	104°34'38.137"W	9.00	
7316.00†	72.047	358.411	7088.90	88.14	59.78	-522.65	40°02'41.518"N	104°34'38.178"W	9.00	
7416.00†	81.017	359.170	7112.17	185.24	156.91	-524.69	40°02'42.478"N	104°34'38.205"W	9.00	
7516.00†	89.988	359.893	7120.00	284.72	256.49	-525.50	40°02'43.462"N	104°34'38.215"W	9.00	
7517.45	90.118	359.903	7120.00 ¹	286.17	257.94	-525.50	40°02'43.476"N	104°34'38.215"W	9.00	End of 3D Arc (J)
7616.00†	90.118	359.903	7119.80	384.58	356.49	-525.67	40°02'44.450"N	104°34'38.217"W	0.00	
7716.00†	90.118	359.903	7119.59	484.44	456.49	-525.84	40°02'45.438"N	104°34'38.219"W	0.00	
7816.00†	90.118	359.903	7119.38	584.30	556.49	-526.01	40°02'46.426"N	104°34'38.222"W	0.00	
7916.00†	90.118	359.903	7119.18	684.16	656.49	-526.18	40°02'47.415"N	104°34'38.224"W	0.00	
8016.00†	90.118	359.903	7118.97	784.03	756.49	-526.35	40°02'48.403"N	104°34'38.226"W	0.00	
8116.00†	90.118	359.903	7118.76	883.89	856.49	-526.51	40°02'49.391"N	104°34'38.228"W	0.00	
8216.00†	90.118	359.903	7118.56	983.75	956.49	-526.68	40°02'50.379"N	104°34'38.230"W	0.00	
8316.00†	90.118	359.903	7118.35	1083.61	1056.49	-526.85	40°02'51.367"N	104°34'38.233"W	0.00	
8416.00†	90.118	359.903	7118.14	1183.47	1156.49	-527.02	40°02'52.356"N	104°34'38.235"W	0.00	



Planned Wellpath Report

WARNER 01N-64W-17-6H (REV-B.0) PWP

Page 4 of 6



REFERENCE WELLPATH IDENTIFICATION

Operator	VERDAD OIL & GAS CORPORATION	Slot	SLOT#06 WARNER 01N-64W-17-6H (210'FSL & 2441'FWL,SEC.17)
Area	COLORADO	Well	WARNER 01N-64W-17-6H
Field	WELD COUNTY (NAD83/TN)	Wellbore	WARNER 01N-64W-17-6H PWB
Facility	SEC.17-T1N-R64W		

WELLPATH DATA (178 stations) † = interpolated/extrapolated station

MD [ft]	Inclination [°]	Azimuth [°]	TVD [ft]	Vert Sect [ft]	North [ft]	East [ft]	Latitude	Longitude	DLS [°/100ft]	Comments
8516.00†	90.118	359.903	7117.94	1283.33	1256.49	-527.19	40°02'53.344"N	104°34'38.237"W	0.00	
8616.00†	90.118	359.903	7117.73	1383.19	1356.49	-527.36	40°02'54.332"N	104°34'38.239"W	0.00	
8716.00†	90.118	359.903	7117.52	1483.05	1456.49	-527.53	40°02'55.320"N	104°34'38.241"W	0.00	
8816.00†	90.118	359.903	7117.32	1582.91	1556.49	-527.70	40°02'56.309"N	104°34'38.244"W	0.00	
8916.00†	90.118	359.903	7117.11	1682.77	1656.49	-527.87	40°02'57.297"N	104°34'38.246"W	0.00	
9016.00†	90.118	359.903	7116.90	1782.63	1756.49	-528.03	40°02'58.285"N	104°34'38.248"W	0.00	
9116.00†	90.118	359.903	7116.70	1882.49	1856.49	-528.20	40°02'59.273"N	104°34'38.250"W	0.00	
9216.00†	90.118	359.903	7116.49	1982.35	1956.49	-528.37	40°03'00.261"N	104°34'38.252"W	0.00	
9316.00†	90.118	359.903	7116.28	2082.21	2056.49	-528.54	40°03'01.250"N	104°34'38.255"W	0.00	
9416.00†	90.118	359.903	7116.08	2182.07	2156.49	-528.71	40°03'02.238"N	104°34'38.257"W	0.00	
9516.00†	90.118	359.903	7115.87	2281.93	2256.48	-528.88	40°03'03.226"N	104°34'38.259"W	0.00	
9616.00†	90.118	359.903	7115.66	2381.79	2356.48	-529.05	40°03'04.214"N	104°34'38.261"W	0.00	
9716.00†	90.118	359.903	7115.46	2481.65	2456.48	-529.22	40°03'05.203"N	104°34'38.263"W	0.00	
9816.00†	90.118	359.903	7115.25	2581.51	2556.48	-529.39	40°03'06.191"N	104°34'38.266"W	0.00	
9916.00†	90.118	359.903	7115.04	2681.37	2656.48	-529.56	40°03'07.179"N	104°34'38.268"W	0.00	
10016.00†	90.118	359.903	7114.84	2781.24	2756.48	-529.72	40°03'08.167"N	104°34'38.270"W	0.00	
10116.00†	90.118	359.903	7114.63	2881.10	2856.48	-529.89	40°03'09.155"N	104°34'38.272"W	0.00	
10216.00†	90.118	359.903	7114.42	2980.96	2956.48	-530.06	40°03'10.144"N	104°34'38.274"W	0.00	
10316.00†	90.118	359.903	7114.22	3080.82	3056.48	-530.23	40°03'11.132"N	104°34'38.277"W	0.00	
10416.00†	90.118	359.903	7114.01	3180.68	3156.48	-530.40	40°03'12.120"N	104°34'38.279"W	0.00	
10516.00†	90.118	359.903	7113.80	3280.54	3256.48	-530.57	40°03'13.108"N	104°34'38.281"W	0.00	
10616.00†	90.118	359.903	7113.60	3380.40	3356.48	-530.74	40°03'14.096"N	104°34'38.283"W	0.00	
10716.00†	90.118	359.903	7113.39	3480.26	3456.48	-530.91	40°03'15.085"N	104°34'38.285"W	0.00	
10816.00†	90.118	359.903	7113.18	3580.12	3556.48	-531.08	40°03'16.073"N	104°34'38.288"W	0.00	
10916.00†	90.118	359.903	7112.98	3679.98	3656.48	-531.24	40°03'17.061"N	104°34'38.290"W	0.00	
11016.00†	90.118	359.903	7112.77	3779.84	3756.48	-531.41	40°03'18.049"N	104°34'38.292"W	0.00	
11116.00†	90.118	359.903	7112.56	3879.70	3856.48	-531.58	40°03'19.038"N	104°34'38.294"W	0.00	
11216.00†	90.118	359.903	7112.36	3979.56	3956.48	-531.75	40°03'20.026"N	104°34'38.296"W	0.00	
11316.00†	90.118	359.903	7112.15	4079.42	4056.48	-531.92	40°03'21.014"N	104°34'38.299"W	0.00	
11416.00†	90.118	359.903	7111.94	4179.28	4156.48	-532.09	40°03'22.002"N	104°34'38.301"W	0.00	
11516.00†	90.118	359.903	7111.74	4279.14	4256.48	-532.26	40°03'22.990"N	104°34'38.303"W	0.00	
11616.00†	90.118	359.903	7111.53	4379.00	4356.48	-532.43	40°03'23.979"N	104°34'38.305"W	0.00	
11716.00†	90.118	359.903	7111.32	4478.86	4456.48	-532.60	40°03'24.967"N	104°34'38.307"W	0.00	
11816.00†	90.118	359.903	7111.12	4578.72	4556.48	-532.77	40°03'25.955"N	104°34'38.310"W	0.00	
11916.00†	90.118	359.903	7110.91	4678.59	4656.48	-532.93	40°03'26.943"N	104°34'38.312"W	0.00	
12016.00†	90.118	359.903	7110.71	4778.45	4756.48	-533.10	40°03'27.932"N	104°34'38.314"W	0.00	
12116.00†	90.118	359.903	7110.50	4878.31	4856.48	-533.27	40°03'28.920"N	104°34'38.316"W	0.00	
12216.00†	90.118	359.903	7110.29	4978.17	4956.48	-533.44	40°03'29.908"N	104°34'38.318"W	0.00	
12316.00†	90.118	359.903	7110.09	5078.03	5056.47	-533.61	40°03'30.896"N	104°34'38.321"W	0.00	
12416.00†	90.118	359.903	7109.88	5177.89	5156.47	-533.78	40°03'31.884"N	104°34'38.323"W	0.00	
12516.00†	90.118	359.903	7109.67	5277.75	5256.47	-533.95	40°03'32.873"N	104°34'38.325"W	0.00	
12616.00†	90.118	359.903	7109.47	5377.61	5356.47	-534.12	40°03'33.861"N	104°34'38.327"W	0.00	
12716.00†	90.118	359.903	7109.26	5477.47	5456.47	-534.29	40°03'34.849"N	104°34'38.329"W	0.00	
12816.00†	90.118	359.903	7109.05	5577.33	5556.47	-534.45	40°03'35.837"N	104°34'38.332"W	0.00	
12916.00†	90.118	359.903	7108.85	5677.19	5656.47	-534.62	40°03'36.826"N	104°34'38.334"W	0.00	



Planned Wellpath Report

WARNER 01N-64W-17-6H (REV-B.0) PWP

Page 5 of 6



REFERENCE WELLPATH IDENTIFICATION

Operator	VERDAD OIL & GAS CORPORATION	Slot	SLOT#06 WARNER 01N-64W-17-6H (210'FSL & 2441'FWL, SEC.17)
Area	COLORADO	Well	WARNER 01N-64W-17-6H
Field	WELD COUNTY (NAD83/TN)	Wellbore	WARNER 01N-64W-17-6H PWB
Facility	SEC.17-T1N-R64W		

WELLPATH DATA (178 stations) † = interpolated/extrapolated station

MD [ft]	Inclination [°]	Azimuth [°]	TVD [ft]	Vert Sect [ft]	North [ft]	East [ft]	Latitude	Longitude	DLS [°/100ft]	Comments
13016.00†	90.118	359.903	7108.64	5777.05	5756.47	-534.79	40°03'37.814"N	104°34'38.336"W	0.00	
13116.00†	90.118	359.903	7108.43	5876.91	5856.47	-534.96	40°03'38.802"N	104°34'38.338"W	0.00	
13216.00†	90.118	359.903	7108.23	5976.77	5956.47	-535.13	40°03'39.790"N	104°34'38.340"W	0.00	
13316.00†	90.118	359.903	7108.02	6076.63	6056.47	-535.30	40°03'40.778"N	104°34'38.343"W	0.00	
13416.00†	90.118	359.903	7107.81	6176.49	6156.47	-535.47	40°03'41.767"N	104°34'38.345"W	0.00	
13516.00†	90.118	359.903	7107.61	6276.35	6256.47	-535.64	40°03'42.755"N	104°34'38.347"W	0.00	
13616.00†	90.118	359.903	7107.40	6376.21	6356.47	-535.81	40°03'43.743"N	104°34'38.349"W	0.00	
13716.00†	90.118	359.903	7107.19	6476.07	6456.47	-535.98	40°03'44.731"N	104°34'38.351"W	0.00	
13816.00†	90.118	359.903	7106.99	6575.94	6556.47	-536.14	40°03'45.720"N	104°34'38.354"W	0.00	
13916.00†	90.118	359.903	7106.78	6675.80	6656.47	-536.31	40°03'46.708"N	104°34'38.356"W	0.00	
14016.00†	90.118	359.903	7106.57	6775.66	6756.47	-536.48	40°03'47.696"N	104°34'38.358"W	0.00	
14116.00†	90.118	359.903	7106.37	6875.52	6856.47	-536.65	40°03'48.684"N	104°34'38.360"W	0.00	
14216.00†	90.118	359.903	7106.16	6975.38	6956.47	-536.82	40°03'49.672"N	104°34'38.362"W	0.00	
14316.00†	90.118	359.903	7105.95	7075.24	7056.47	-536.99	40°03'50.661"N	104°34'38.365"W	0.00	
14416.00†	90.118	359.903	7105.75	7175.10	7156.47	-537.16	40°03'51.649"N	104°34'38.367"W	0.00	
14516.00†	90.118	359.903	7105.54	7274.96	7256.47	-537.33	40°03'52.637"N	104°34'38.369"W	0.00	
14616.00†	90.118	359.903	7105.33	7374.82	7356.47	-537.50	40°03'53.625"N	104°34'38.371"W	0.00	
14716.00†	90.118	359.903	7105.13	7474.68	7456.47	-537.67	40°03'54.613"N	104°34'38.373"W	0.00	
14816.00†	90.118	359.903	7104.92	7574.54	7556.47	-537.83	40°03'55.602"N	104°34'38.376"W	0.00	
14916.00†	90.118	359.903	7104.71	7674.40	7656.47	-538.00	40°03'56.590"N	104°34'38.378"W	0.00	
15016.00†	90.118	359.903	7104.51	7774.26	7756.47	-538.17	40°03'57.578"N	104°34'38.380"W	0.00	
15116.00†	90.118	359.903	7104.30	7874.12	7856.46	-538.34	40°03'58.566"N	104°34'38.382"W	0.00	
15216.00†	90.118	359.903	7104.09	7973.98	7956.46	-538.51	40°03'59.555"N	104°34'38.384"W	0.00	
15316.00†	90.118	359.903	7103.89	8073.84	8056.46	-538.68	40°04'00.543"N	104°34'38.387"W	0.00	
15416.00†	90.118	359.903	7103.68	8173.70	8156.46	-538.85	40°04'01.531"N	104°34'38.389"W	0.00	
15516.00†	90.118	359.903	7103.47	8273.56	8256.46	-539.02	40°04'02.519"N	104°34'38.391"W	0.00	
15616.00†	90.118	359.903	7103.27	8373.42	8356.46	-539.19	40°04'03.507"N	104°34'38.393"W	0.00	
15716.00†	90.118	359.903	7103.06	8473.28	8456.46	-539.35	40°04'04.496"N	104°34'38.395"W	0.00	
15816.00†	90.118	359.903	7102.85	8573.15	8556.46	-539.52	40°04'05.484"N	104°34'38.398"W	0.00	
15916.00†	90.118	359.903	7102.65	8673.01	8656.46	-539.69	40°04'06.472"N	104°34'38.400"W	0.00	
16016.00†	90.118	359.903	7102.44	8772.87	8756.46	-539.86	40°04'07.460"N	104°34'38.402"W	0.00	
16116.00†	90.118	359.903	7102.23	8872.73	8856.46	-540.03	40°04'08.449"N	104°34'38.404"W	0.00	
16216.00†	90.118	359.903	7102.03	8972.59	8956.46	-540.20	40°04'09.437"N	104°34'38.406"W	0.00	
16316.00†	90.118	359.903	7101.82	9072.45	9056.46	-540.37	40°04'10.425"N	104°34'38.409"W	0.00	
16416.00†	90.118	359.903	7101.61	9172.31	9156.46	-540.54	40°04'11.413"N	104°34'38.411"W	0.00	
16516.00†	90.118	359.903	7101.41	9272.17	9256.46	-540.71	40°04'12.401"N	104°34'38.413"W	0.00	
16616.00†	90.118	359.903	7101.20	9372.03	9356.46	-540.88	40°04'13.390"N	104°34'38.415"W	0.00	
16716.00†	90.118	359.903	7100.99	9471.89	9456.46	-541.04	40°04'14.378"N	104°34'38.417"W	0.00	
16816.00†	90.118	359.903	7100.79	9571.75	9556.46	-541.21	40°04'15.366"N	104°34'38.420"W	0.00	
16916.00†	90.118	359.903	7100.58	9671.61	9656.46	-541.38	40°04'16.354"N	104°34'38.422"W	0.00	
17016.00†	90.118	359.903	7100.37	9771.47	9756.46	-541.55	40°04'17.343"N	104°34'38.424"W	0.00	
17116.00†	90.118	359.903	7100.17	9871.33	9856.46	-541.72	40°04'18.331"N	104°34'38.426"W	0.00	
17197.08	90.118	359.903	7100.00 ²	9952.30	9937.54	-541.86	40°04'19.132"N	104°34'38.428"W	0.00	End of Tangent (J)



Planned Wellpath Report

WARNER 01N-64W-17-6H (REV-B.0) PWP

Page 6 of 6



REFERENCE WELLPATH IDENTIFICATION

Operator	VERDAD OIL & GAS CORPORATION	Slot	SLOT#06 WARNER 01N-64W-17-6H (210'FSL & 2441'FWL,SEC.17)
Area	COLORADO	Well	WARNER 01N-64W-17-6H
Field	WELD COUNTY (NAD83/TN)	Wellbore	WARNER 01N-64W-17-6H PWB
Facility	SEC.17-T1N-R64W		

HOLE & CASING SECTIONS

- Ref Wellbore: WARNER 01N-64W-17-6H PWB Ref Wellpath: WARNER 01N-64W-17-6H (REV-B.0) PWP

String/Diameter	Start MD [ft]	End MD [ft]	Interval [ft]	Start TVD [ft]	End TVD [ft]	Start N/S [ft]	Start E/W [ft]	End N/S [ft]	End E/W [ft]
13.5in Open Hole	16.00	1700.00	1684.00	16.00	1694.25	0.00	0.00	-73.68	-91.55
9.625in Casing Surface	16.00	1700.00	1684.00	16.00	1694.25	0.00	0.00	-73.68	-91.55
8.5in Open Hole	1700.00	17197.08	15497.08	1694.25	7100.00	-73.68	-91.55	9937.54	-541.86
5.5in Casing Production	16.00	17197.08	17181.08	16.00	7100.00	0.00	0.00	9937.54	-541.86

TARGETS

Name	MD [ft]	TVD [ft]	North [ft]	East [ft]	Grid East [US ft]	Grid North [US ft]	Latitude	Longitude	Shape
2) WARNER 01N-64W-17-6H BHL(460'FNL & 1920'FWL,SEC.17, REV-2)(NIO)	17197.08	7100.00	9937.54	-541.86	3258208.71	1270411.11	40°04'19.132"N	104°34'38.428"W	point
1) WARNER 01N-64W-17-6H LP (460'FSL & 1920'FWL,SEC.17, REV-2)(NIO)	7517.45	7120.00	257.94	-525.50	3258325.99	1260732.58	40°02'43.476"N	104°34'38.215"W	point

SURVEY PROGRAM -

Ref Wellbore: WARNER 01N-64W-17-6H PWB Ref Wellpath: WARNER 01N-64W-17-6H (REV-B.0) PWP

Start MD [ft]	End MD [ft]	Positional Uncertainty Model	Log Name/Comment	Wellbore
16.00	1700.00	Custom BHI NaviTrak (Standard Rotating+Axial Corr) (Rockies 0.03Gt model)		WARNER 01N-64W-17-6H PWB
1700.00	17197.08	Custom BHI AutoTrak Curve (Axial Corr, Short spacing) (Rockies 0.03Gt model)		WARNER 01N-64W-17-6H PWB

VERDAD_WARNER_01N-64W-17-6H__REV-B.0__PWP_05-24-17.las

~VERSION INFORMATION

VERS. 2.0 : CWLS LOG ASCII STANDARD-VERSION 2.0

WRAP. NO : ASCII DATA SECTION CONTAINS ONE ROW PER WELLPATH STATION

~WELL INFORMATION

#MNEM	.UNITS	DATA	:DESCRIPTION
#----	.-----	----	:-----
STRT	.ft	0.00	:START MD
STOP	.ft	17197.08	:STOP MD
STEP	.ft	0.0	:STEP (non-uniform increment)
NULL	.	-999.99	:NULL
COMP	.	VERDAD OIL & GAS CORPORATION	:OPERATOR
WELL	.	WARNER 01N-64W-17-6H	:WELL
FLD	.	WELD COUNTY (NAD83/TN)	:FIELD
LOC	.	COLORADO	:AREA (aka: Location)
CNTY	.	N/A	:COUNTY
STAT	.	N/A	:STATE
CTRY	.	N/A	:COUNTRY
SRVC	.	Baker Hughes	:CONTRACTOR
DATE	.	05/06/2017	:LOG REV DATE
API	.		:API NUMBER

~OTHER INFORMATION

#Software: wellArchitect(R) Version 5.0

#MNEM	.UNITS	DATA	:DESCRIPTION
#----	.-----	----	:-----
WPTYPE	.	PLANNED WELLPATH	:WELLPATH TYPE
FACILITY	.	SEC.17-T1N-R64W	:FACILITY
SLOT	.	SLOT#06 WARNER 01N-64W-17-6H (210'FSL &	2441'FWL,SEC.17):SLOT
WELLBORE	.	WARNER 01N-64W-17-6H PWB	:WELLBORE
WELLPATH	.	WARNER 01N-64W-17-6H (REV-B.0) PWP	:WELLPATH
MDREFPT	.	RIG (16'RKB + 5067'GL) (RKB)	:MD REFERENCE POINT
TVDREFPT	.	RIG (16'RKB + 5067'GL) (RKB)	:TVD REFERENCE POINT
LCLREFPT	.	SLOT	:LOCAL COORDINATE REFERENCE PT
VSAZIMUTH	.deg	356.88	:VERTICAL SECTION AZIMUTH
VSORIGN	.ft	0.00	:VERTICAL SECTION ORIGIN NORTH
VSORIGE	.ft	0.00	:VERTICAL SECTION ORIGIN EAST

~CURVE (WELLPATH) INFORMATION

#MNEM	.UNITS	:DESCRIPTION
#----	.-----	:-----
DEPT	.ft	:MEASURED DEPTH
INC	.deg	:INCLINATION
AZI	.deg	:AZIMUTH

VERDAD_WARNER_01N-64W-17-6H__REV-B.0__PWP_05-24-17.las

TVD .ft :TRUE VERTICAL DEPTH
 SECT .ft :CROSS SECTION (CURTAIN/VERTICAL)
 LOCALN .ft :LOCAL NORTH
 LOCALE .ft :LOCAL EAST
 LAT .deg :LATITUDE
 LONG .deg :LONGITUDE
 DLS .deg/100ft :DOGLEG SEVERITY

~ASCII DATA

0.00	0.00	231.17	0.00	0.00	0.00	0.00	40.0447019	-104.5754050	0.00
16.00	0.00	231.17	16.00	0.00	0.00	0.00	40.0447019	-104.5754050	0.00
116.00	0.00	231.17	116.00	0.00	0.00	0.00	40.0447019	-104.5754050	0.00
216.00	0.00	231.17	216.00	0.00	0.00	0.00	40.0447019	-104.5754050	0.00
316.00	0.00	231.17	316.00	0.00	0.00	0.00	40.0447019	-104.5754050	0.00
400.00	0.00	231.17	400.00	0.00	0.00	0.00	40.0447019	-104.5754050	0.00
416.00	0.32	231.17	416.00	-0.03	-0.03	-0.03	40.0447019	-104.5754051	2.00
516.00	2.32	231.17	515.97	-1.37	-1.47	-1.83	40.0446979	-104.5754115	2.00
616.00	4.32	231.17	615.80	-4.75	-5.10	-6.34	40.0446879	-104.5754276	2.00
692.25	5.85	231.17	691.74	-8.69	-9.34	-11.60	40.0446763	-104.5754464	2.00
716.00	5.85	231.17	715.37	-10.10	-10.85	-13.49	40.0446721	-104.5754532	0.00
816.00	5.85	231.17	814.85	-16.05	-17.24	-21.42	40.0446546	-104.5754815	0.00
916.00	5.85	231.17	914.33	-21.99	-23.62	-29.35	40.0446371	-104.5755098	0.00
1016.00	5.85	231.17	1013.81	-27.94	-30.01	-37.29	40.0446196	-104.5755382	0.00
1116.00	5.85	231.17	1113.29	-33.88	-36.39	-45.22	40.0446020	-104.5755665	0.00
1216.00	5.85	231.17	1212.77	-39.82	-42.78	-53.15	40.0445845	-104.5755948	0.00
1316.00	5.85	231.17	1312.25	-45.77	-49.16	-61.09	40.0445670	-104.5756232	0.00
1416.00	5.85	231.17	1411.73	-51.71	-55.55	-69.02	40.0445495	-104.5756515	0.00
1516.00	5.85	231.17	1511.21	-57.65	-61.93	-76.95	40.0445319	-104.5756799	0.00
1616.00	5.85	231.17	1610.69	-63.60	-68.32	-84.89	40.0445144	-104.5757082	0.00
1716.00	5.85	231.17	1710.17	-69.54	-74.70	-92.82	40.0444969	-104.5757365	0.00
1816.00	5.85	231.17	1809.65	-75.48	-81.09	-100.75	40.0444793	-104.5757649	0.00
1916.00	5.85	231.17	1909.13	-81.43	-87.47	-108.69	40.0444618	-104.5757932	0.00
2016.00	5.85	231.17	2008.61	-87.37	-93.86	-116.62	40.0444443	-104.5758215	0.00
2116.00	5.85	231.17	2108.09	-93.31	-100.24	-124.55	40.0444268	-104.5758499	0.00
2216.00	5.85	231.17	2207.57	-99.26	-106.63	-132.49	40.0444092	-104.5758782	0.00
2316.00	5.85	231.17	2307.05	-105.20	-113.01	-140.42	40.0443917	-104.5759065	0.00
2416.00	5.85	231.17	2406.53	-111.15	-119.40	-148.35	40.0443742	-104.5759349	0.00
2516.00	5.85	231.17	2506.01	-117.09	-125.78	-156.29	40.0443567	-104.5759632	0.00
2616.00	5.85	231.17	2605.49	-123.03	-132.17	-164.22	40.0443391	-104.5759915	0.00
2716.00	5.85	231.17	2704.97	-128.98	-138.55	-172.15	40.0443216	-104.5760199	0.00
2816.00	5.85	231.17	2804.45	-134.92	-144.94	-180.09	40.0443041	-104.5760482	0.00
2916.00	5.85	231.17	2903.93	-140.86	-151.32	-188.02	40.0442865	-104.5760765	0.00
3016.00	5.85	231.17	3003.41	-146.81	-157.71	-195.95	40.0442690	-104.5761049	0.00
3116.00	5.85	231.17	3102.89	-152.75	-164.09	-203.89	40.0442515	-104.5761332	0.00

VERDAD_WARNER_01N-64W-17-6H__REV-B.0__PWP_05-24-17.las

3216.00	5.85	231.17	3202.37	-158.69	-170.48	-211.82	40.0442340	-104.5761615	0.00
3316.00	5.85	231.17	3301.85	-164.64	-176.86	-219.75	40.0442164	-104.5761899	0.00
3416.00	5.85	231.17	3401.33	-170.58	-183.25	-227.69	40.0441989	-104.5762182	0.00
3516.00	5.85	231.17	3500.81	-176.53	-189.63	-235.62	40.0441814	-104.5762466	0.00
3616.00	5.85	231.17	3600.29	-182.47	-196.02	-243.55	40.0441639	-104.5762749	0.00
3716.00	5.85	231.17	3699.77	-188.41	-202.40	-251.49	40.0441463	-104.5763032	0.00
3816.00	5.85	231.17	3799.25	-194.36	-208.79	-259.42	40.0441288	-104.5763316	0.00
3916.00	5.85	231.17	3898.73	-200.30	-215.17	-267.35	40.0441113	-104.5763599	0.00
4016.00	5.85	231.17	3998.21	-206.24	-221.56	-275.29	40.0440937	-104.5763882	0.00
4116.00	5.85	231.17	4097.69	-212.19	-227.94	-283.22	40.0440762	-104.5764166	0.00
4216.00	5.85	231.17	4197.17	-218.13	-234.33	-291.15	40.0440587	-104.5764449	0.00
4316.00	5.85	231.17	4296.65	-224.07	-240.71	-299.09	40.0440412	-104.5764732	0.00
4416.00	5.85	231.17	4396.13	-230.02	-247.10	-307.02	40.0440236	-104.5765016	0.00
4516.00	5.85	231.17	4495.61	-235.96	-253.48	-314.95	40.0440061	-104.5765299	0.00
4616.00	5.85	231.17	4595.09	-241.90	-259.87	-322.89	40.0439886	-104.5765582	0.00
4716.00	5.85	231.17	4694.57	-247.85	-266.26	-330.82	40.0439711	-104.5765866	0.00
4816.00	5.85	231.17	4794.05	-253.79	-272.64	-338.75	40.0439535	-104.5766149	0.00
4916.00	5.85	231.17	4893.53	-259.74	-279.03	-346.69	40.0439360	-104.5766432	0.00
5016.00	5.85	231.17	4993.02	-265.68	-285.41	-354.62	40.0439185	-104.5766716	0.00
5116.00	5.85	231.17	5092.50	-271.62	-291.80	-362.55	40.0439009	-104.5766999	0.00
5216.00	5.85	231.17	5191.98	-277.57	-298.18	-370.49	40.0438834	-104.5767282	0.00
5316.00	5.85	231.17	5291.46	-283.51	-304.57	-378.42	40.0438659	-104.5767566	0.00
5416.00	5.85	231.17	5390.94	-289.45	-310.95	-386.35	40.0438484	-104.5767849	0.00
5516.00	5.85	231.17	5490.42	-295.40	-317.34	-394.29	40.0438308	-104.5768132	0.00
5616.00	5.85	231.17	5589.90	-301.34	-323.72	-402.22	40.0438133	-104.5768416	0.00
5716.00	5.85	231.17	5689.38	-307.28	-330.11	-410.15	40.0437958	-104.5768699	0.00
5816.00	5.85	231.17	5788.86	-313.23	-336.49	-418.09	40.0437782	-104.5768982	0.00
5916.00	5.85	231.17	5888.34	-319.17	-342.88	-426.02	40.0437607	-104.5769266	0.00
6016.00	5.85	231.17	5987.82	-325.12	-349.26	-433.95	40.0437432	-104.5769549	0.00
6116.00	5.85	231.17	6087.30	-331.06	-355.65	-441.89	40.0437257	-104.5769833	0.00
6216.00	5.85	231.17	6186.78	-337.00	-362.03	-449.82	40.0437081	-104.5770116	0.00
6316.00	5.85	231.17	6286.26	-342.95	-368.42	-457.75	40.0436906	-104.5770399	0.00
6416.00	5.85	231.17	6385.74	-348.89	-374.80	-465.69	40.0436731	-104.5770683	0.00
6475.55	5.85	231.17	6444.98	-352.43	-378.60	-470.41	40.0436626	-104.5770851	0.00
6516.00	4.57	269.75	6485.27	-353.55	-379.90	-473.63	40.0436591	-104.5770966	9.00
6616.00	10.07	333.18	6584.55	-345.33	-372.10	-481.57	40.0436805	-104.5771250	9.00
6716.00	18.54	346.12	6681.38	-321.65	-348.81	-489.35	40.0437444	-104.5771528	9.00
6816.00	27.34	351.01	6773.39	-283.11	-310.62	-496.77	40.0438493	-104.5771793	9.00
6916.00	36.24	353.64	6858.30	-230.65	-258.45	-503.64	40.0439925	-104.5772038	9.00
7016.00	45.17	355.34	6934.04	-165.56	-193.60	-509.81	40.0441705	-104.5772259	9.00
7116.00	54.12	356.58	6998.73	-89.44	-117.66	-515.12	40.0443789	-104.5772448	9.00
7216.00	63.08	357.57	7050.77	-4.17	-32.50	-519.44	40.0446127	-104.5772603	9.00
7316.00	72.05	358.41	7088.90	88.14	59.78	-522.65	40.0448660	-104.5772717	9.00
7416.00	81.02	359.17	7112.17	185.24	156.91	-524.69	40.0451326	-104.5772790	9.00

VERDAD_WARNER_01N-64W-17-6H__REV-B.0__PWP_05-24-17.las									
7516.00	89.99	359.89	7120.00	284.72	256.49	-525.50	40.0454060	-104.5772819	9.00
7517.45	90.12	359.90	7120.00	286.17	257.94	-525.50	40.0454100	-104.5772819	9.00
7616.00	90.12	359.90	7119.80	384.58	356.49	-525.67	40.0456805	-104.5772825	0.00
7716.00	90.12	359.90	7119.59	484.44	456.49	-525.84	40.0459550	-104.5772832	0.00
7816.00	90.12	359.90	7119.38	584.30	556.49	-526.01	40.0462295	-104.5772838	0.00
7916.00	90.12	359.90	7119.18	684.16	656.49	-526.18	40.0465040	-104.5772844	0.00
8016.00	90.12	359.90	7118.97	784.03	756.49	-526.35	40.0467785	-104.5772850	0.00
8116.00	90.12	359.90	7118.76	883.89	856.49	-526.51	40.0470531	-104.5772856	0.00
8216.00	90.12	359.90	7118.56	983.75	956.49	-526.68	40.0473276	-104.5772862	0.00
8316.00	90.12	359.90	7118.35	1083.61	1056.49	-526.85	40.0476021	-104.5772868	0.00
8416.00	90.12	359.90	7118.14	1183.47	1156.49	-527.02	40.0478766	-104.5772874	0.00
8516.00	90.12	359.90	7117.94	1283.33	1256.49	-527.19	40.0481511	-104.5772880	0.00
8616.00	90.12	359.90	7117.73	1383.19	1356.49	-527.36	40.0484256	-104.5772887	0.00
8716.00	90.12	359.90	7117.52	1483.05	1456.49	-527.53	40.0487001	-104.5772893	0.00
8816.00	90.12	359.90	7117.32	1582.91	1556.49	-527.70	40.0489746	-104.5772899	0.00
8916.00	90.12	359.90	7117.11	1682.77	1656.49	-527.87	40.0492491	-104.5772905	0.00
9016.00	90.12	359.90	7116.90	1782.63	1756.49	-528.03	40.0495236	-104.5772911	0.00
9116.00	90.12	359.90	7116.70	1882.49	1856.49	-528.20	40.0497981	-104.5772917	0.00
9216.00	90.12	359.90	7116.49	1982.35	1956.49	-528.37	40.0500726	-104.5772923	0.00
9316.00	90.12	359.90	7116.28	2082.21	2056.49	-528.54	40.0503471	-104.5772929	0.00
9416.00	90.12	359.90	7116.08	2182.07	2156.49	-528.71	40.0506216	-104.5772935	0.00
9516.00	90.12	359.90	7115.87	2281.93	2256.48	-528.88	40.0508961	-104.5772942	0.00
9616.00	90.12	359.90	7115.66	2381.79	2356.48	-529.05	40.0511706	-104.5772948	0.00
9716.00	90.12	359.90	7115.46	2481.65	2456.48	-529.22	40.0514451	-104.5772954	0.00
9816.00	90.12	359.90	7115.25	2581.51	2556.48	-529.39	40.0517196	-104.5772960	0.00
9916.00	90.12	359.90	7115.04	2681.37	2656.48	-529.56	40.0519942	-104.5772966	0.00
10016.00	90.12	359.90	7114.84	2781.24	2756.48	-529.72	40.0522687	-104.5772972	0.00
10116.00	90.12	359.90	7114.63	2881.10	2856.48	-529.89	40.0525432	-104.5772978	0.00
10216.00	90.12	359.90	7114.42	2980.96	2956.48	-530.06	40.0528177	-104.5772984	0.00
10316.00	90.12	359.90	7114.22	3080.82	3056.48	-530.23	40.0530922	-104.5772990	0.00
10416.00	90.12	359.90	7114.01	3180.68	3156.48	-530.40	40.0533667	-104.5772997	0.00
10516.00	90.12	359.90	7113.80	3280.54	3256.48	-530.57	40.0536412	-104.5773003	0.00
10616.00	90.12	359.90	7113.60	3380.40	3356.48	-530.74	40.0539157	-104.5773009	0.00
10716.00	90.12	359.90	7113.39	3480.26	3456.48	-530.91	40.0541902	-104.5773015	0.00
10816.00	90.12	359.90	7113.18	3580.12	3556.48	-531.08	40.0544647	-104.5773021	0.00
10916.00	90.12	359.90	7112.98	3679.98	3656.48	-531.24	40.0547392	-104.5773027	0.00
11016.00	90.12	359.90	7112.77	3779.84	3756.48	-531.41	40.0550137	-104.5773033	0.00
11116.00	90.12	359.90	7112.56	3879.70	3856.48	-531.58	40.0552882	-104.5773039	0.00
11216.00	90.12	359.90	7112.36	3979.56	3956.48	-531.75	40.0555627	-104.5773045	0.00
11316.00	90.12	359.90	7112.15	4079.42	4056.48	-531.92	40.0558372	-104.5773052	0.00
11416.00	90.12	359.90	7111.94	4179.28	4156.48	-532.09	40.0561117	-104.5773058	0.00
11516.00	90.12	359.90	7111.74	4279.14	4256.48	-532.26	40.0563862	-104.5773064	0.00
11616.00	90.12	359.90	7111.53	4379.00	4356.48	-532.43	40.0566607	-104.5773070	0.00
11716.00	90.12	359.90	7111.32	4478.86	4456.48	-532.60	40.0569353	-104.5773076	0.00

VERDAD_WARNER_01N-64W-17-6H__REV-B.0__PWP_05-24-17.las									
11816.00	90.12	359.90	7111.12	4578.72	4556.48	-532.77	40.0572098	-104.5773082	0.00
11916.00	90.12	359.90	7110.91	4678.59	4656.48	-532.93	40.0574843	-104.5773088	0.00
12016.00	90.12	359.90	7110.71	4778.45	4756.48	-533.10	40.0577588	-104.5773094	0.00
12116.00	90.12	359.90	7110.50	4878.31	4856.48	-533.27	40.0580333	-104.5773100	0.00
12216.00	90.12	359.90	7110.29	4978.17	4956.48	-533.44	40.0583078	-104.5773107	0.00
12316.00	90.12	359.90	7110.09	5078.03	5056.47	-533.61	40.0585823	-104.5773113	0.00
12416.00	90.12	359.90	7109.88	5177.89	5156.47	-533.78	40.0588568	-104.5773119	0.00
12516.00	90.12	359.90	7109.67	5277.75	5256.47	-533.95	40.0591313	-104.5773125	0.00
12616.00	90.12	359.90	7109.47	5377.61	5356.47	-534.12	40.0594058	-104.5773131	0.00
12716.00	90.12	359.90	7109.26	5477.47	5456.47	-534.29	40.0596803	-104.5773137	0.00
12816.00	90.12	359.90	7109.05	5577.33	5556.47	-534.45	40.0599548	-104.5773143	0.00
12916.00	90.12	359.90	7108.85	5677.19	5656.47	-534.62	40.0602293	-104.5773149	0.00
13016.00	90.12	359.90	7108.64	5777.05	5756.47	-534.79	40.0605038	-104.5773155	0.00
13116.00	90.12	359.90	7108.43	5876.91	5856.47	-534.96	40.0607783	-104.5773162	0.00
13216.00	90.12	359.90	7108.23	5976.77	5956.47	-535.13	40.0610528	-104.5773168	0.00
13316.00	90.12	359.90	7108.02	6076.63	6056.47	-535.30	40.0613273	-104.5773174	0.00
13416.00	90.12	359.90	7107.81	6176.49	6156.47	-535.47	40.0616018	-104.5773180	0.00
13516.00	90.12	359.90	7107.61	6276.35	6256.47	-535.64	40.0618764	-104.5773186	0.00
13616.00	90.12	359.90	7107.40	6376.21	6356.47	-535.81	40.0621509	-104.5773192	0.00
13716.00	90.12	359.90	7107.19	6476.07	6456.47	-535.98	40.0624254	-104.5773198	0.00
13816.00	90.12	359.90	7106.99	6575.94	6556.47	-536.14	40.0626999	-104.5773204	0.00
13916.00	90.12	359.90	7106.78	6675.80	6656.47	-536.31	40.0629744	-104.5773211	0.00
14016.00	90.12	359.90	7106.57	6775.66	6756.47	-536.48	40.0632489	-104.5773217	0.00
14116.00	90.12	359.90	7106.37	6875.52	6856.47	-536.65	40.0635234	-104.5773223	0.00
14216.00	90.12	359.90	7106.16	6975.38	6956.47	-536.82	40.0637979	-104.5773229	0.00
14316.00	90.12	359.90	7105.95	7075.24	7056.47	-536.99	40.0640724	-104.5773235	0.00
14416.00	90.12	359.90	7105.75	7175.10	7156.47	-537.16	40.0643469	-104.5773241	0.00
14516.00	90.12	359.90	7105.54	7274.96	7256.47	-537.33	40.0646214	-104.5773247	0.00
14616.00	90.12	359.90	7105.33	7374.82	7356.47	-537.50	40.0648959	-104.5773253	0.00
14716.00	90.12	359.90	7105.13	7474.68	7456.47	-537.67	40.0651704	-104.5773259	0.00
14816.00	90.12	359.90	7104.92	7574.54	7556.47	-537.83	40.0654449	-104.5773266	0.00
14916.00	90.12	359.90	7104.71	7674.40	7656.47	-538.00	40.0657194	-104.5773272	0.00
15016.00	90.12	359.90	7104.51	7774.26	7756.47	-538.17	40.0659939	-104.5773278	0.00
15116.00	90.12	359.90	7104.30	7874.12	7856.46	-538.34	40.0662684	-104.5773284	0.00
15216.00	90.12	359.90	7104.09	7973.98	7956.46	-538.51	40.0665429	-104.5773290	0.00
15316.00	90.12	359.90	7103.89	8073.84	8056.46	-538.68	40.0668174	-104.5773296	0.00
15416.00	90.12	359.90	7103.68	8173.70	8156.46	-538.85	40.0670919	-104.5773302	0.00
15516.00	90.12	359.90	7103.47	8273.56	8256.46	-539.02	40.0673665	-104.5773308	0.00
15616.00	90.12	359.90	7103.27	8373.42	8356.46	-539.19	40.0676410	-104.5773314	0.00
15716.00	90.12	359.90	7103.06	8473.28	8456.46	-539.35	40.0679155	-104.5773321	0.00
15816.00	90.12	359.90	7102.85	8573.15	8556.46	-539.52	40.0681900	-104.5773327	0.00
15916.00	90.12	359.90	7102.65	8673.01	8656.46	-539.69	40.0684645	-104.5773333	0.00
16016.00	90.12	359.90	7102.44	8772.87	8756.46	-539.86	40.0687390	-104.5773339	0.00
16116.00	90.12	359.90	7102.23	8872.73	8856.46	-540.03	40.0690135	-104.5773345	0.00

VERDAD_WARNER_01N-64W-17-6H__REV-B.0__PWP_05-24-17.las									
16216.00	90.12	359.90	7102.03	8972.59	8956.46	-540.20	40.0692880	-104.5773351	0.00
16316.00	90.12	359.90	7101.82	9072.45	9056.46	-540.37	40.0695625	-104.5773357	0.00
16416.00	90.12	359.90	7101.61	9172.31	9156.46	-540.54	40.0698370	-104.5773363	0.00
16516.00	90.12	359.90	7101.41	9272.17	9256.46	-540.71	40.0701115	-104.5773369	0.00
16616.00	90.12	359.90	7101.20	9372.03	9356.46	-540.88	40.0703860	-104.5773376	0.00
16716.00	90.12	359.90	7100.99	9471.89	9456.46	-541.04	40.0706605	-104.5773382	0.00
16816.00	90.12	359.90	7100.79	9571.75	9556.46	-541.21	40.0709350	-104.5773388	0.00
16916.00	90.12	359.90	7100.58	9671.61	9656.46	-541.38	40.0712095	-104.5773394	0.00
17016.00	90.12	359.90	7100.37	9771.47	9756.46	-541.55	40.0714840	-104.5773400	0.00
17116.00	90.12	359.90	7100.17	9871.33	9856.46	-541.72	40.0717585	-104.5773406	0.00
17197.08	90.12	359.90	7100.00	9952.30	9937.54	-541.86	40.0719811	-104.5773411	0.00