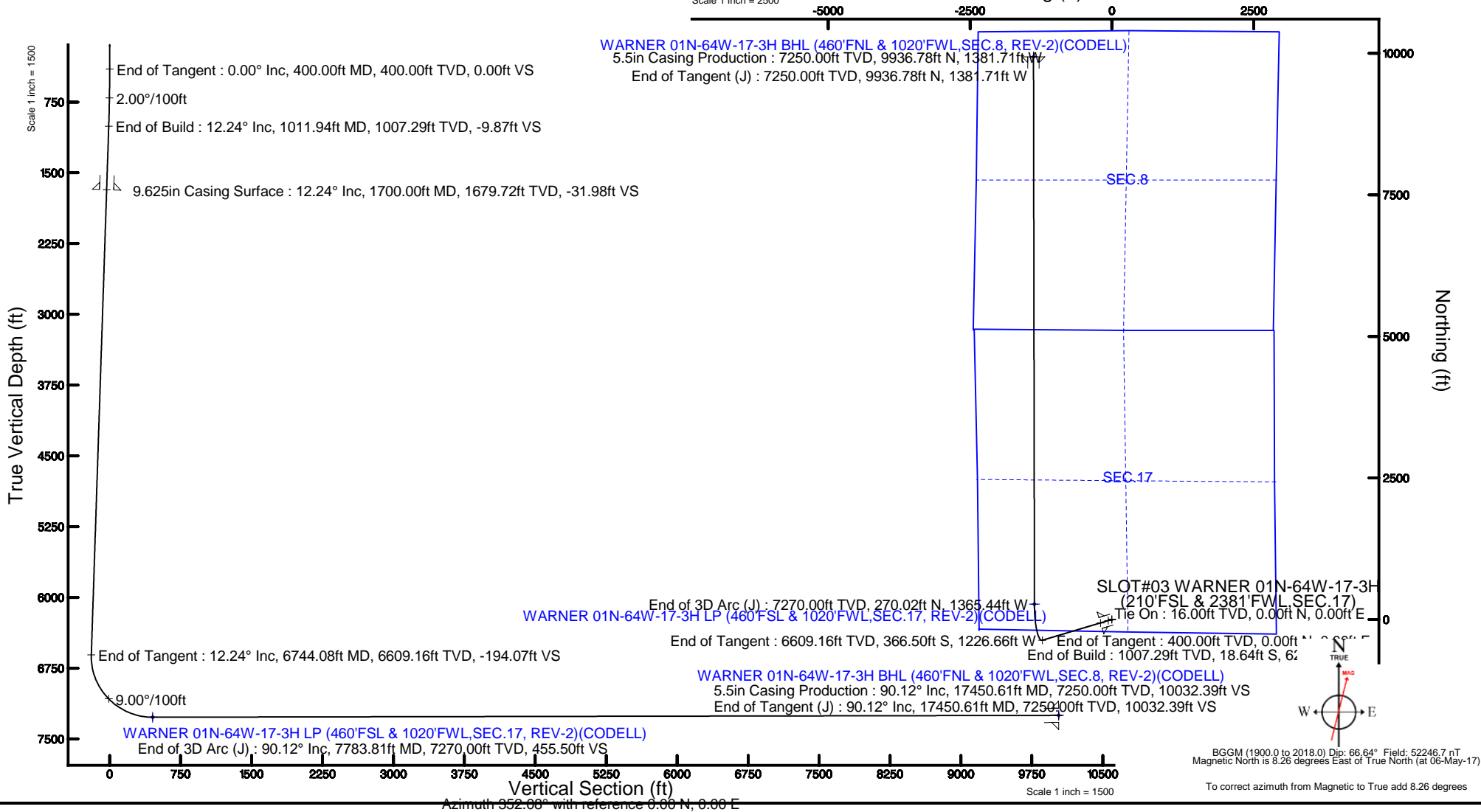


VERDAD OIL & GAS CORPORATION

Location: COLORADO Slot: SLOT#03 WARNER 01N-64W-17-3H (210'FSL & 2381'FWL,SEC.17)  
Field: WELD COUNTY (NAD83/TN) Well: WARNER 01N-64W-17-3H  
Facility: SEC.17-T1N-R64W Wellbore: WARNER 01N-64W-17-3H PWB

Location Information							
Facility Name				Grid East (US ft)	Grid North (US ft)	Latitude	Longitude
SEC.17-T1N-R64W				3258754.187	1260480.616	40°02'40.942"N	104°34'32.743"W
Slot				Grid East (US ft)	Grid North (US ft)	Latitude	Longitude
SLOT#03 WARNER 01N-64W-17-3H (210'FSL & 2381'FWL,SEC.17)				3258793.929	1260480.625	40°02'40.938"N	104°34'32.232"W
RIG (16'RXB+5067'GL) (RKB) to Mud line (At Slot: SLOT#03 WARNER 01N-64W-17-3H (210'FSL & 2381'FWL,SEC.17))				5083ft			
Mean Sea Level to Mud line (At Slot: SLOT#03 WARNER 01N-64W-17-3H (210'FSL & 2381'FWL,SEC.17))				0ft			
RIG (16'RXB+5067'GL) (RKB) to Mean Sea Level				5083ft			

Bottom Hole Location									
MD (ft)	Inc (°)	Az (°)	TVD (ft)	Local N (ft)	Local E (ft)	Grid East (US ft)	Grid North (US ft)	Latitude	Longitude
17450.61	90.119	359.904	7250.00	9936.78	-1381.71	3257308.77	1270402.08	40°04'19.135"N	104°34'50.005"W





# Planned Wellpath Report

WARNER 01N-64W-17-3H (REV-B.0, CODELL) PWP

Page 1 of 6



REFERENCE WELLPATH IDENTIFICATION			
Operator	VERDAD OIL & GAS CORPORATION	Slot	SLOT#03 WARNER 01N-64W-17-3H (210'FSL & 2381'FWL, SEC.17)
Area	COLORADO	Well	WARNER 01N-64W-17-3H
Field	WELD COUNTY (NAD83/TN)	Wellbore	WARNER 01N-64W-17-3H PWB
Facility	SEC.17-T1N-R64W		

REPORT SETUP INFORMATION			
Projection System	NAD83 / Lambert Colorado SP, Northern Zone (501), US feet	Software System	WellArchitect® 5.0
North Reference	True	User	Cookdanm
Scale	0.999963	Report Generated	24-May-17 at 1:29:59 PM
Convergence at slot	0.60° East	Database/Source file	WA_Denver/WARNER_01N-64W-17-3H_REV-B.0_CODELL_PWP_.xml

WELLPATH LOCATION						
	Local coordinates		Grid coordinates		Geographic coordinates	
	North[ft]	East[ft]	Easting[US ft]	Northing[US ft]	Latitude	Longitude
Slot Location	-0.40	39.74	3258793.93	1260480.63	40°02'40.938"N	104°34'32.232"W
Facility Reference Pt			3258754.19	1260480.62	40°02'40.942"N	104°34'32.743"W
Field Reference Pt			3242930.13	1254608.21	40°01'44.490"N	104°37'56.946"W

WELLPATH DATUM			
Calculation method	Minimum curvature	RIG (16'RKB+5067'GL) (RKB) to Facility Vertical Datum	5083.00ft
Horizontal Reference Pt	Slot	RIG (16'RKB+5067'GL) (RKB) to Mean Sea Level	5083.00ft
Vertical Reference Pt	RIG (16'RKB+5067'GL) (RKB)	RIG (16'RKB+5067'GL) (RKB) to Mud Line at Slot (SLOT#03 WARNER 01N-64W-17-3H (210'FSL & 2381'FWL, SEC.17))	5083.00ft
MD Reference Pt	RIG (16'RKB+5067'GL) (RKB)	Section Origin	N 0.00, E 0.00 ft
Field Vertical Reference	Mean Sea Level	Section Azimuth	352.08°



# Planned Wellpath Report

WARNER 01N-64W-17-3H (REV-B.0,CODELL) PWP

Page 2 of 6



## REFERENCE WELLPATH IDENTIFICATION

Operator	VERDAD OIL & GAS CORPORATION	Slot	SLOT#03 WARNER 01N-64W-17-3H (210'FSL & 2381'FWL,SEC.17)
Area	COLORADO	Well	WARNER 01N-64W-17-3H
Field	WELD COUNTY (NAD83/TN)	Wellbore	WARNER 01N-64W-17-3H PWB
Facility	SEC.17-T1N-R64W		

## WELLPATH DATA (181 stations) † = interpolated/extrapolated station

MD [ft]	Inclination [°]	Azimuth [°]	TVD [ft]	Vert Sect [ft]	North [ft]	East [ft]	Latitude	Longitude	DLS [°/100ft]	Comments
0.00†	0.000	253.365	0.00	0.00	0.00	0.00	40°02'40.938"N	104°34'32.232"W	0.00	
16.00	0.000	253.365	16.00	0.00	0.00	0.00	40°02'40.938"N	104°34'32.232"W	0.00	Tie On
116.00†	0.000	253.365	116.00	0.00	0.00	0.00	40°02'40.938"N	104°34'32.232"W	0.00	
216.00†	0.000	253.365	216.00	0.00	0.00	0.00	40°02'40.938"N	104°34'32.232"W	0.00	
316.00†	0.000	253.365	316.00	0.00	0.00	0.00	40°02'40.938"N	104°34'32.232"W	0.00	
400.00	0.000	253.365	400.00	0.00	0.00	0.00	40°02'40.938"N	104°34'32.232"W	0.00	End of Tangent
416.00†	0.320	253.365	416.00	-0.01	-0.01	-0.04	40°02'40.938"N	104°34'32.233"W	2.00	
516.00†	2.320	253.365	515.97	-0.36	-0.67	-2.25	40°02'40.931"N	104°34'32.261"W	2.00	
616.00†	4.320	253.365	615.80	-1.23	-2.33	-7.80	40°02'40.915"N	104°34'32.332"W	2.00	
716.00†	6.320	253.365	715.36	-2.64	-4.98	-16.68	40°02'40.889"N	104°34'32.446"W	2.00	
816.00†	8.320	253.365	814.54	-4.57	-8.63	-28.89	40°02'40.853"N	104°34'32.603"W	2.00	
916.00†	10.320	253.365	913.21	-7.03	-13.27	-44.41	40°02'40.807"N	104°34'32.803"W	2.00	
1011.94	12.239	253.365	1007.29	-9.87	-18.64	-62.38	40°02'40.754"N	104°34'33.034"W	2.00	End of Build
1016.00†	12.239	253.365	1011.26	-10.00	-18.89	-63.21	40°02'40.751"N	104°34'33.045"W	0.00	
1116.00†	12.239	253.365	1108.99	-13.21	-24.95	-83.52	40°02'40.691"N	104°34'33.306"W	0.00	
1216.00†	12.239	253.365	1206.72	-16.43	-31.02	-103.83	40°02'40.631"N	104°34'33.567"W	0.00	
1316.00†	12.239	253.365	1304.45	-19.64	-37.09	-124.14	40°02'40.571"N	104°34'33.828"W	0.00	
1416.00†	12.239	253.365	1402.17	-22.85	-43.16	-144.45	40°02'40.511"N	104°34'34.089"W	0.00	
1516.00†	12.239	253.365	1499.90	-26.07	-49.23	-164.77	40°02'40.452"N	104°34'34.351"W	0.00	
1616.00†	12.239	253.365	1597.63	-29.28	-55.30	-185.08	40°02'40.392"N	104°34'34.612"W	0.00	
1716.00†	12.239	253.365	1695.36	-32.49	-61.37	-205.39	40°02'40.332"N	104°34'34.873"W	0.00	
1816.00†	12.239	253.365	1793.08	-35.71	-67.43	-225.70	40°02'40.272"N	104°34'35.134"W	0.00	
1916.00†	12.239	253.365	1890.81	-38.92	-73.50	-246.01	40°02'40.212"N	104°34'35.395"W	0.00	
2016.00†	12.239	253.365	1988.54	-42.13	-79.57	-266.32	40°02'40.152"N	104°34'35.656"W	0.00	
2116.00†	12.239	253.365	2086.26	-45.35	-85.64	-286.63	40°02'40.092"N	104°34'35.918"W	0.00	
2216.00†	12.239	253.365	2183.99	-48.56	-91.71	-306.94	40°02'40.032"N	104°34'36.179"W	0.00	
2316.00†	12.239	253.365	2281.72	-51.77	-97.78	-327.26	40°02'39.972"N	104°34'36.440"W	0.00	
2416.00†	12.239	253.365	2379.45	-54.99	-103.85	-347.57	40°02'39.912"N	104°34'36.701"W	0.00	
2516.00†	12.239	253.365	2477.17	-58.20	-109.91	-367.88	40°02'39.852"N	104°34'36.962"W	0.00	
2616.00†	12.239	253.365	2574.90	-61.41	-115.98	-388.19	40°02'39.792"N	104°34'37.223"W	0.00	
2716.00†	12.239	253.365	2672.63	-64.63	-122.05	-408.50	40°02'39.732"N	104°34'37.484"W	0.00	
2816.00†	12.239	253.365	2770.36	-67.84	-128.12	-428.81	40°02'39.672"N	104°34'37.746"W	0.00	
2916.00†	12.239	253.365	2868.08	-71.05	-134.19	-449.12	40°02'39.612"N	104°34'38.007"W	0.00	
3016.00†	12.239	253.365	2965.81	-74.27	-140.26	-469.44	40°02'39.552"N	104°34'38.268"W	0.00	
3116.00†	12.239	253.365	3063.54	-77.48	-146.33	-489.75	40°02'39.492"N	104°34'38.529"W	0.00	
3216.00†	12.239	253.365	3161.27	-80.69	-152.39	-510.06	40°02'39.432"N	104°34'38.790"W	0.00	
3316.00†	12.239	253.365	3258.99	-83.91	-158.46	-530.37	40°02'39.372"N	104°34'39.051"W	0.00	
3416.00†	12.239	253.365	3356.72	-87.12	-164.53	-550.68	40°02'39.312"N	104°34'39.313"W	0.00	
3516.00†	12.239	253.365	3454.45	-90.33	-170.60	-570.99	40°02'39.252"N	104°34'39.574"W	0.00	
3616.00†	12.239	253.365	3552.17	-93.55	-176.67	-591.30	40°02'39.192"N	104°34'39.835"W	0.00	
3716.00†	12.239	253.365	3649.90	-96.76	-182.74	-611.61	40°02'39.132"N	104°34'40.096"W	0.00	
3816.00†	12.239	253.365	3747.63	-99.98	-188.81	-631.93	40°02'39.072"N	104°34'40.357"W	0.00	
3916.00†	12.239	253.365	3845.36	-103.19	-194.87	-652.24	40°02'39.012"N	104°34'40.618"W	0.00	
4016.00†	12.239	253.365	3943.08	-106.40	-200.94	-672.55	40°02'38.952"N	104°34'40.880"W	0.00	
4116.00†	12.239	253.365	4040.81	-109.62	-207.01	-692.86	40°02'38.892"N	104°34'41.141"W	0.00	



# Planned Wellpath Report

WARNER 01N-64W-17-3H (REV-B.0,CODELL) PWP

Page 3 of 6



## REFERENCE WELLPATH IDENTIFICATION

Operator	VERDAD OIL & GAS CORPORATION	Slot	SLOT#03 WARNER 01N-64W-17-3H (210'FSL & 2381'FWL,SEC.17)
Area	COLORADO	Well	WARNER 01N-64W-17-3H
Field	WELD COUNTY (NAD83/TN)	Wellbore	WARNER 01N-64W-17-3H PWB
Facility	SEC.17-T1N-R64W		

## WELLPATH DATA (181 stations) † = interpolated/extrapolated station

MD [ft]	Inclination [°]	Azimuth [°]	TVD [ft]	Vert Sect [ft]	North [ft]	East [ft]	Latitude	Longitude	DLS [°/100ft]	Comments
4216.00†	12.239	253.365	4138.54	-112.83	-213.08	-713.17	40°02'38.832"N	104°34'41.402"W	0.00	
4316.00†	12.239	253.365	4236.27	-116.04	-219.15	-733.48	40°02'38.772"N	104°34'41.663"W	0.00	
4416.00†	12.239	253.365	4333.99	-119.26	-225.22	-753.79	40°02'38.712"N	104°34'41.924"W	0.00	
4516.00†	12.239	253.365	4431.72	-122.47	-231.29	-774.10	40°02'38.652"N	104°34'42.185"W	0.00	
4616.00†	12.239	253.365	4529.45	-125.68	-237.36	-794.42	40°02'38.592"N	104°34'42.447"W	0.00	
4716.00†	12.239	253.365	4627.17	-128.90	-243.42	-814.73	40°02'38.532"N	104°34'42.708"W	0.00	
4816.00†	12.239	253.365	4724.90	-132.11	-249.49	-835.04	40°02'38.472"N	104°34'42.969"W	0.00	
4916.00†	12.239	253.365	4822.63	-135.32	-255.56	-855.35	40°02'38.412"N	104°34'43.230"W	0.00	
5016.00†	12.239	253.365	4920.36	-138.54	-261.63	-875.66	40°02'38.352"N	104°34'43.491"W	0.00	
5116.00†	12.239	253.365	5018.08	-141.75	-267.70	-895.97	40°02'38.292"N	104°34'43.752"W	0.00	
5216.00†	12.239	253.365	5115.81	-144.96	-273.77	-916.28	40°02'38.232"N	104°34'44.013"W	0.00	
5316.00†	12.239	253.365	5213.54	-148.18	-279.84	-936.60	40°02'38.172"N	104°34'44.275"W	0.00	
5416.00†	12.239	253.365	5311.27	-151.39	-285.90	-956.91	40°02'38.112"N	104°34'44.536"W	0.00	
5516.00†	12.239	253.365	5408.99	-154.60	-291.97	-977.22	40°02'38.052"N	104°34'44.797"W	0.00	
5616.00†	12.239	253.365	5506.72	-157.82	-298.04	-997.53	40°02'37.992"N	104°34'45.058"W	0.00	
5716.00†	12.239	253.365	5604.45	-161.03	-304.11	-1017.84	40°02'37.933"N	104°34'45.319"W	0.00	
5816.00†	12.239	253.365	5702.17	-164.24	-310.18	-1038.15	40°02'37.873"N	104°34'45.580"W	0.00	
5916.00†	12.239	253.365	5799.90	-167.46	-316.25	-1058.46	40°02'37.813"N	104°34'45.842"W	0.00	
6016.00†	12.239	253.365	5897.63	-170.67	-322.32	-1078.77	40°02'37.753"N	104°34'46.103"W	0.00	
6116.00†	12.239	253.365	5995.36	-173.88	-328.38	-1099.09	40°02'37.693"N	104°34'46.364"W	0.00	
6216.00†	12.239	253.365	6093.08	-177.10	-334.45	-1119.40	40°02'37.633"N	104°34'46.625"W	0.00	
6316.00†	12.239	253.365	6190.81	-180.31	-340.52	-1139.71	40°02'37.573"N	104°34'46.886"W	0.00	
6416.00†	12.239	253.365	6288.54	-183.52	-346.59	-1160.02	40°02'37.513"N	104°34'47.147"W	0.00	
6516.00†	12.239	253.365	6386.27	-186.74	-352.66	-1180.33	40°02'37.453"N	104°34'47.409"W	0.00	
6616.00†	12.239	253.365	6483.99	-189.95	-358.73	-1200.64	40°02'37.393"N	104°34'47.670"W	0.00	
6716.00†	12.239	253.365	6581.72	-193.16	-364.80	-1220.95	40°02'37.333"N	104°34'47.931"W	0.00	
6744.08	12.239	253.365	6609.16	-194.07	-366.50	-1226.66	40°02'37.316"N	104°34'48.004"W	0.00	End of Tangent
6816.00†	12.124	284.398	6679.54	-192.35	-366.80	-1241.29	40°02'37.313"N	104°34'48.192"W	9.00	
6916.00†	16.746	316.155	6776.50	-176.67	-353.78	-1261.49	40°02'37.442"N	104°34'48.452"W	9.00	
7016.00†	23.948	331.959	6870.27	-145.88	-325.41	-1281.05	40°02'37.722"N	104°34'48.704"W	9.00	
7116.00†	32.035	340.466	6958.53	-100.75	-282.42	-1299.49	40°02'38.147"N	104°34'48.941"W	9.00	
7216.00†	40.477	345.774	7039.12	-42.39	-225.84	-1316.37	40°02'38.706"N	104°34'49.158"W	9.00	
7316.00†	49.089	349.497	7110.04	27.76	-157.09	-1331.27	40°02'39.385"N	104°34'49.349"W	9.00	
7416.00†	57.794	352.352	7169.56	107.98	-77.84	-1343.81	40°02'40.168"N	104°34'49.511"W	9.00	
7516.00†	66.551	354.703	7216.20	196.29	9.95	-1353.70	40°02'41.036"N	104°34'49.638"W	9.00	
7616.00†	75.339	356.760	7248.82	290.52	104.11	-1360.68	40°02'41.966"N	104°34'49.728"W	9.00	
7716.00†	84.144	358.657	7266.61	388.34	202.33	-1364.59	40°02'42.937"N	104°34'49.778"W	9.00	
7783.81	90.119	359.904	7270.00†	455.50	270.02	-1365.44	40°02'43.606"N	104°34'49.789"W	9.00	End of 3D Arc (J)
7816.00†	90.119	359.904	7269.93	487.39	302.21	-1365.49	40°02'43.924"N	104°34'49.790"W	0.00	
7916.00†	90.119	359.904	7269.73	586.46	402.21	-1365.66	40°02'44.912"N	104°34'49.792"W	0.00	
8016.00†	90.119	359.904	7269.52	685.53	502.21	-1365.83	40°02'45.901"N	104°34'49.794"W	0.00	
8116.00†	90.119	359.904	7269.31	784.60	602.21	-1366.00	40°02'46.889"N	104°34'49.796"W	0.00	
8216.00†	90.119	359.904	7269.11	883.67	702.21	-1366.16	40°02'47.877"N	104°34'49.799"W	0.00	
8316.00†	90.119	359.904	7268.90	982.74	802.21	-1366.33	40°02'48.865"N	104°34'49.801"W	0.00	
8416.00†	90.119	359.904	7268.69	1081.81	902.21	-1366.50	40°02'49.853"N	104°34'49.803"W	0.00	



# Planned Wellpath Report

WARNER 01N-64W-17-3H (REV-B.0,CODELL) PWP

Page 4 of 6



## REFERENCE WELLPATH IDENTIFICATION

Operator	VERDAD OIL & GAS CORPORATION	Slot	SLOT#03 WARNER 01N-64W-17-3H (210'FSL & 2381'FWL,SEC.17)
Area	COLORADO	Well	WARNER 01N-64W-17-3H
Field	WELD COUNTY (NAD83/TN)	Wellbore	WARNER 01N-64W-17-3H PWB
Facility	SEC.17-T1N-R64W		

## WELLPATH DATA (181 stations) † = interpolated/extrapolated station

MD [ft]	Inclination [°]	Azimuth [°]	TVD [ft]	Vert Sect [ft]	North [ft]	East [ft]	Latitude	Longitude	DLS [°/100ft]	Comments
8516.00†	90.119	359.904	7268.49	1180.88	1002.21	-1366.67	40°02'50.842"N	104°34'49.805"W	0.00	
8616.00†	90.119	359.904	7268.28	1279.95	1102.21	-1366.84	40°02'51.830"N	104°34'49.808"W	0.00	
8716.00†	90.119	359.904	7268.07	1379.02	1202.21	-1367.01	40°02'52.818"N	104°34'49.810"W	0.00	
8816.00†	90.119	359.904	7267.86	1478.09	1302.21	-1367.17	40°02'53.806"N	104°34'49.812"W	0.00	
8916.00†	90.119	359.904	7267.66	1577.16	1402.20	-1367.34	40°02'54.795"N	104°34'49.814"W	0.00	
9016.00†	90.119	359.904	7267.45	1676.23	1502.20	-1367.51	40°02'55.783"N	104°34'49.817"W	0.00	
9116.00†	90.119	359.904	7267.24	1775.30	1602.20	-1367.68	40°02'56.771"N	104°34'49.819"W	0.00	
9216.00†	90.119	359.904	7267.04	1874.37	1702.20	-1367.85	40°02'57.759"N	104°34'49.821"W	0.00	
9316.00†	90.119	359.904	7266.83	1973.44	1802.20	-1368.02	40°02'58.747"N	104°34'49.823"W	0.00	
9416.00†	90.119	359.904	7266.62	2072.51	1902.20	-1368.18	40°02'59.736"N	104°34'49.825"W	0.00	
9516.00†	90.119	359.904	7266.42	2171.58	2002.20	-1368.35	40°03'00.724"N	104°34'49.828"W	0.00	
9616.00†	90.119	359.904	7266.21	2270.65	2102.20	-1368.52	40°03'01.712"N	104°34'49.830"W	0.00	
9716.00†	90.119	359.904	7266.00	2369.72	2202.20	-1368.69	40°03'02.700"N	104°34'49.832"W	0.00	
9816.00†	90.119	359.904	7265.80	2468.79	2302.20	-1368.86	40°03'03.689"N	104°34'49.834"W	0.00	
9916.00†	90.119	359.904	7265.59	2567.86	2402.20	-1369.03	40°03'04.677"N	104°34'49.837"W	0.00	
10016.00†	90.119	359.904	7265.38	2666.93	2502.20	-1369.19	40°03'05.665"N	104°34'49.839"W	0.00	
10116.00†	90.119	359.904	7265.17	2766.00	2602.20	-1369.36	40°03'06.653"N	104°34'49.841"W	0.00	
10216.00†	90.119	359.904	7264.97	2865.07	2702.20	-1369.53	40°03'07.641"N	104°34'49.843"W	0.00	
10316.00†	90.119	359.904	7264.76	2964.14	2802.20	-1369.70	40°03'08.630"N	104°34'49.846"W	0.00	
10416.00†	90.119	359.904	7264.55	3063.21	2902.20	-1369.87	40°03'09.618"N	104°34'49.848"W	0.00	
10516.00†	90.119	359.904	7264.35	3162.28	3002.20	-1370.04	40°03'10.606"N	104°34'49.850"W	0.00	
10616.00†	90.119	359.904	7264.14	3261.35	3102.20	-1370.20	40°03'11.594"N	104°34'49.852"W	0.00	
10716.00†	90.119	359.904	7263.93	3360.42	3202.20	-1370.37	40°03'12.583"N	104°34'49.855"W	0.00	
10816.00†	90.119	359.904	7263.73	3459.49	3302.20	-1370.54	40°03'13.571"N	104°34'49.857"W	0.00	
10916.00†	90.119	359.904	7263.52	3558.56	3402.20	-1370.71	40°03'14.559"N	104°34'49.859"W	0.00	
11016.00†	90.119	359.904	7263.31	3657.63	3502.20	-1370.88	40°03'15.547"N	104°34'49.861"W	0.00	
11116.00†	90.119	359.904	7263.11	3756.70	3602.20	-1371.05	40°03'16.535"N	104°34'49.864"W	0.00	
11216.00†	90.119	359.904	7262.90	3855.77	3702.20	-1371.21	40°03'17.524"N	104°34'49.866"W	0.00	
11316.00†	90.119	359.904	7262.69	3954.84	3802.20	-1371.38	40°03'18.512"N	104°34'49.868"W	0.00	
11416.00†	90.119	359.904	7262.49	4053.91	3902.20	-1371.55	40°03'19.500"N	104°34'49.870"W	0.00	
11516.00†	90.119	359.904	7262.28	4152.98	4002.20	-1371.72	40°03'20.488"N	104°34'49.872"W	0.00	
11616.00†	90.119	359.904	7262.07	4252.05	4102.20	-1371.89	40°03'21.477"N	104°34'49.875"W	0.00	
11716.00†	90.119	359.904	7261.86	4351.12	4202.19	-1372.06	40°03'22.465"N	104°34'49.877"W	0.00	
11816.00†	90.119	359.904	7261.66	4450.19	4302.19	-1372.22	40°03'23.453"N	104°34'49.879"W	0.00	
11916.00†	90.119	359.904	7261.45	4549.26	4402.19	-1372.39	40°03'24.441"N	104°34'49.881"W	0.00	
12016.00†	90.119	359.904	7261.24	4648.33	4502.19	-1372.56	40°03'25.429"N	104°34'49.884"W	0.00	
12116.00†	90.119	359.904	7261.04	4747.40	4602.19	-1372.73	40°03'26.418"N	104°34'49.886"W	0.00	
12216.00†	90.119	359.904	7260.83	4846.47	4702.19	-1372.90	40°03'27.406"N	104°34'49.888"W	0.00	
12316.00†	90.119	359.904	7260.62	4945.54	4802.19	-1373.07	40°03'28.394"N	104°34'49.890"W	0.00	
12416.00†	90.119	359.904	7260.42	5044.61	4902.19	-1373.24	40°03'29.382"N	104°34'49.893"W	0.00	
12516.00†	90.119	359.904	7260.21	5143.68	5002.19	-1373.40	40°03'30.370"N	104°34'49.895"W	0.00	
12616.00†	90.119	359.904	7260.00	5242.75	5102.19	-1373.57	40°03'31.359"N	104°34'49.897"W	0.00	
12716.00†	90.119	359.904	7259.80	5341.82	5202.19	-1373.74	40°03'32.347"N	104°34'49.899"W	0.00	
12816.00†	90.119	359.904	7259.59	5440.89	5302.19	-1373.91	40°03'33.335"N	104°34'49.902"W	0.00	
12916.00†	90.119	359.904	7259.38	5539.96	5402.19	-1374.08	40°03'34.323"N	104°34'49.904"W	0.00	





# Planned Wellpath Report

WARNER 01N-64W-17-3H (REV-B.0,CODELL) PWP

Page 5 of 6



## REFERENCE WELLPATH IDENTIFICATION

Operator	VERDAD OIL & GAS CORPORATION	Slot	SLOT#03 WARNER 01N-64W-17-3H (210'FSL & 2381'FWL,SEC.17)
Area	COLORADO	Well	WARNER 01N-64W-17-3H
Field	WELD COUNTY (NAD83/TN)	Wellbore	WARNER 01N-64W-17-3H PWB
Facility	SEC.17-T1N-R64W		

## WELLPATH DATA (181 stations) † = interpolated/extrapolated station

MD [ft]	Inclination [°]	Azimuth [°]	TVD [ft]	Vert Sect [ft]	North [ft]	East [ft]	Latitude	Longitude	DLS [°/100ft]	Comments
13016.00†	90.119	359.904	7259.17	5639.03	5502.19	-1374.25	40°03'35.312"N	104°34'49.906"W	0.00	
13116.00†	90.119	359.904	7258.97	5738.10	5602.19	-1374.41	40°03'36.300"N	104°34'49.908"W	0.00	
13216.00†	90.119	359.904	7258.76	5837.16	5702.19	-1374.58	40°03'37.288"N	104°34'49.910"W	0.00	
13316.00†	90.119	359.904	7258.55	5936.23	5802.19	-1374.75	40°03'38.276"N	104°34'49.913"W	0.00	
13416.00†	90.119	359.904	7258.35	6035.30	5902.19	-1374.92	40°03'39.264"N	104°34'49.915"W	0.00	
13516.00†	90.119	359.904	7258.14	6134.37	6002.19	-1375.09	40°03'40.253"N	104°34'49.917"W	0.00	
13616.00†	90.119	359.904	7257.93	6233.44	6102.19	-1375.26	40°03'41.241"N	104°34'49.919"W	0.00	
13716.00†	90.119	359.904	7257.73	6332.51	6202.19	-1375.42	40°03'42.229"N	104°34'49.922"W	0.00	
13816.00†	90.119	359.904	7257.52	6431.58	6302.19	-1375.59	40°03'43.217"N	104°34'49.924"W	0.00	
13916.00†	90.119	359.904	7257.31	6530.65	6402.19	-1375.76	40°03'44.206"N	104°34'49.926"W	0.00	
14016.00†	90.119	359.904	7257.11	6629.72	6502.19	-1375.93	40°03'45.194"N	104°34'49.928"W	0.00	
14116.00†	90.119	359.904	7256.90	6728.79	6602.19	-1376.10	40°03'46.182"N	104°34'49.931"W	0.00	
14216.00†	90.119	359.904	7256.69	6827.86	6702.19	-1376.27	40°03'47.170"N	104°34'49.933"W	0.00	
14316.00†	90.119	359.904	7256.49	6926.93	6802.19	-1376.43	40°03'48.158"N	104°34'49.935"W	0.00	
14416.00†	90.119	359.904	7256.28	7026.00	6902.19	-1376.60	40°03'49.147"N	104°34'49.937"W	0.00	
14516.00†	90.119	359.904	7256.07	7125.07	7002.18	-1376.77	40°03'50.135"N	104°34'49.940"W	0.00	
14616.00†	90.119	359.904	7255.86	7224.14	7102.18	-1376.94	40°03'51.123"N	104°34'49.942"W	0.00	
14716.00†	90.119	359.904	7255.66	7323.21	7202.18	-1377.11	40°03'52.111"N	104°34'49.944"W	0.00	
14816.00†	90.119	359.904	7255.45	7422.28	7302.18	-1377.28	40°03'53.100"N	104°34'49.946"W	0.00	
14916.00†	90.119	359.904	7255.24	7521.35	7402.18	-1377.44	40°03'54.088"N	104°34'49.948"W	0.00	
15016.00†	90.119	359.904	7255.04	7620.42	7502.18	-1377.61	40°03'55.076"N	104°34'49.951"W	0.00	
15116.00†	90.119	359.904	7254.83	7719.49	7602.18	-1377.78	40°03'56.064"N	104°34'49.953"W	0.00	
15216.00†	90.119	359.904	7254.62	7818.56	7702.18	-1377.95	40°03'57.052"N	104°34'49.955"W	0.00	
15316.00†	90.119	359.904	7254.42	7917.63	7802.18	-1378.12	40°03'58.041"N	104°34'49.957"W	0.00	
15416.00†	90.119	359.904	7254.21	8016.70	7902.18	-1378.29	40°03'59.029"N	104°34'49.960"W	0.00	
15516.00†	90.119	359.904	7254.00	8115.77	8002.18	-1378.45	40°04'00.017"N	104°34'49.962"W	0.00	
15616.00†	90.119	359.904	7253.80	8214.84	8102.18	-1378.62	40°04'01.005"N	104°34'49.964"W	0.00	
15716.00†	90.119	359.904	7253.59	8313.91	8202.18	-1378.79	40°04'01.993"N	104°34'49.966"W	0.00	
15816.00†	90.119	359.904	7253.38	8412.98	8302.18	-1378.96	40°04'02.982"N	104°34'49.969"W	0.00	
15916.00†	90.119	359.904	7253.18	8512.05	8402.18	-1379.13	40°04'03.970"N	104°34'49.971"W	0.00	
16016.00†	90.119	359.904	7252.97	8611.12	8502.18	-1379.30	40°04'04.958"N	104°34'49.973"W	0.00	
16116.00†	90.119	359.904	7252.76	8710.19	8602.18	-1379.46	40°04'05.946"N	104°34'49.975"W	0.00	
16216.00†	90.119	359.904	7252.55	8809.26	8702.18	-1379.63	40°04'06.935"N	104°34'49.978"W	0.00	
16316.00†	90.119	359.904	7252.35	8908.33	8802.18	-1379.80	40°04'07.923"N	104°34'49.980"W	0.00	
16416.00†	90.119	359.904	7252.14	9007.40	8902.18	-1379.97	40°04'08.911"N	104°34'49.982"W	0.00	
16516.00†	90.119	359.904	7251.93	9106.47	9002.18	-1380.14	40°04'09.899"N	104°34'49.984"W	0.00	
16616.00†	90.119	359.904	7251.73	9205.54	9102.18	-1380.31	40°04'10.887"N	104°34'49.987"W	0.00	
16716.00†	90.119	359.904	7251.52	9304.61	9202.18	-1380.48	40°04'11.876"N	104°34'49.989"W	0.00	
16816.00†	90.119	359.904	7251.31	9403.68	9302.18	-1380.64	40°04'12.864"N	104°34'49.991"W	0.00	
16916.00†	90.119	359.904	7251.11	9502.75	9402.18	-1380.81	40°04'13.852"N	104°34'49.993"W	0.00	
17016.00†	90.119	359.904	7250.90	9601.82	9502.18	-1380.98	40°04'14.840"N	104°34'49.995"W	0.00	
17116.00†	90.119	359.904	7250.69	9700.89	9602.18	-1381.15	40°04'15.829"N	104°34'49.998"W	0.00	
17216.00†	90.119	359.904	7250.49	9799.96	9702.18	-1381.32	40°04'16.817"N	104°34'50.000"W	0.00	
17316.00†	90.119	359.904	7250.28	9899.03	9802.17	-1381.49	40°04'17.805"N	104°34'50.002"W	0.00	
17416.00†	90.119	359.904	7250.07	9998.10	9902.17	-1381.65	40°04'18.793"N	104°34'50.004"W	0.00	



# Planned Wellpath Report

WARNER 01N-64W-17-3H (REV-B.0,CODELL) PWP

Page 6 of 6



REFERENCE WELLPATH IDENTIFICATION			
Operator	VERDAD OIL & GAS CORPORATION	Slot	SLOT#03 WARNER 01N-64W-17-3H (210'FSL & 2381'FWL,SEC.17)
Area	COLORADO	Well	WARNER 01N-64W-17-3H
Field	WELD COUNTY (NAD83/TN)	Wellbore	WARNER 01N-64W-17-3H PWB
Facility	SEC.17-T1N-R64W		

WELLPATH DATA (181 stations)										
MD [ft]	Inclination [°]	Azimuth [°]	TVD [ft]	Vert Sect [ft]	North [ft]	East [ft]	Latitude	Longitude	DLS [°/100ft]	Comments
17450.61	90.119	359.904	7250.00 <sup>2</sup>	10032.39	9936.78	-1381.71	40°04'19.135"N	104°34'50.005"W	0.00	End of Tangent (J)

HOLE & CASING SECTIONS									
- Ref Wellbore: WARNER 01N-64W-17-3H PWB					Ref Wellpath: WARNER 01N-64W-17-3H (REV-B.0,CODELL) PWP				
String/Diameter	Start MD [ft]	End MD [ft]	Interval [ft]	Start TVD [ft]	End TVD [ft]	Start N/S [ft]	Start E/W [ft]	End N/S [ft]	End E/W [ft]
13.5in Open Hole	16.00	1700.00	1684.00	16.00	1679.72	0.00	0.00	-60.39	-202.14
9.625in Casing Surface	16.00	1700.00	1684.00	16.00	1679.72	0.00	0.00	-60.39	-202.14
8.5in Open Hole	1700.00	17450.61	15750.61	1679.72	7250.00	-60.39	-202.14	9936.78	-1381.71
5.5in Casing Production	16.00	17450.61	17434.61	16.00	7250.00	0.00	0.00	9936.78	-1381.71

TARGETS									
Name	MD [ft]	TVD [ft]	North [ft]	East [ft]	Grid East [US ft]	Grid North [US ft]	Latitude	Longitude	Shape
2) WARNER 01N-64W-17-3H BHL (460'FNL & 1020'FWL,SEC.17, REV-2)(CODELL)		7250.00	9936.76	-1381.70	3257308.78	1270402.06	40°04'19.135"N	104°34'50.005"W	point
1) WARNER 01N-64W-17-3H LP (460'FSL & 1020'FWL,SEC.17, REV-2)(CODELL)	7783.81	7270.00	270.02	-1365.44	3257425.81	1260736.38	40°02'43.606"N	104°34'49.789"W	point

SURVEY PROGRAM -				
Ref Wellbore: WARNER 01N-64W-17-3H PWB			Ref Wellpath: WARNER 01N-64W-17-3H (REV-B.0,CODELL) PWP	
Start MD [ft]	End MD [ft]	Positional Uncertainty Model	Log Name/Comment	Wellbore
16.00	1700.00	Custom BHI NaviTrak (Standard Rotating+Axial Corr) (Rockies 0.03Gt model)		WARNER 01N-64W-17-3H PWB
1700.00	17450.61	Custom BHI AutoTrak Curve (Axial Corr, Short spacing) (Rockies 0.03Gt model)		WARNER 01N-64W-17-3H PWB

## ~VERSION INFORMATION

VERS. 2.0 : CWLS LOG ASCII STANDARD-VERSION 2.0

WRAP. NO : ASCII DATA SECTION CONTAINS ONE ROW PER WELLPATH STATION

## ~WELL INFORMATION

#MNE	UNITS	DATA	DESCRIPTION
STRT	.ft	0.00	:START MD
STOP	.ft	17450.61	:STOP MD
STEP	.ft	0.0	:STEP (non-uniform increment)
NULL	.	-999.99	:NULL
COMP	.	VERDAD OIL & GAS CORPORATION	:OPERATOR
WELL	.	WARNER 01N-64W-17-3H	:WELL
FLD	.	WELD COUNTY (NAD83/TN)	:FIELD
LOC	.	COLORADO	:AREA (aka: Location)
CNTY	.	N/A	:COUNTY
STAT	.	N/A	:STATE
CTRY	.	N/A	:COUNTRY
SRVC	.	Baker Hughes	:CONTRACTOR
DATE	.	05/06/2017	:LOG REV DATE
API	.		:API NUMBER

## ~OTHER INFORMATION

#Software: wellArchitect(R) Version 5.0

#MNE	UNITS	DATA	DESCRIPTION
WPTYPE	.	PLANNED WELLPATH	:WELLPATH TYPE
FACILITY	.	SEC.17-T1N-R64W	:FACILITY
SLOT	.	SLOT#03 WARNER 01N-64W-17-3H (210'FSL & 2381'FWL,SEC.17)	:SLOT
WELLBORE	.	WARNER 01N-64W-17-3H PWB	:WELLBORE
WELLPATH	.	WARNER 01N-64W-17-3H (REV-B.0,CODELL) PWP	:WELLPATH
MDREFPT	.	RIG (16'RKB+5067'GL) (RKB)	:MD REFERENCE POINT
TVDREFPT	.	RIG (16'RKB+5067'GL) (RKB)	:TVD REFERENCE POINT
LCLREFPT	.	SLOT	:LOCAL COORDINATE REFERENCE PT
VSAZIMUTH	.deg	352.08	:VERTICAL SECTION AZIMUTH
VSORIGN	.ft	0.00	:VERTICAL SECTION ORIGIN NORTH
VSORIGE	.ft	0.00	:VERTICAL SECTION ORIGIN EAST

## ~CURVE (WELLPATH) INFORMATION

#MNE	UNITS	DESCRIPTION
DEPT	.ft	:MEASURED DEPTH
INC	.deg	:INCLINATION
AZI	.deg	:AZIMUTH
TVD	.ft	:TRUE VERTICAL DEPTH
SECT	.ft	:CROSS SECTION (CURTAIN/VERTICAL)
LOCALN	.ft	:LOCAL NORTH
LOCALE	.ft	:LOCAL EAST



VERDAD\_WARNER\_01N-64W-17-3H\_\_REV-B.0\_CODELL\_\_PWP\_05-24-17.1as

LAT .deg :LATITUDE  
LONG .deg :LONGITUDE  
DLS .deg/100ft :DOGLEG SEVERITY

~ASCII DATA

0.00	0.00	253.37	0.00	0.00	0.00	0.00	40.0447050	-104.5756200	0.00
16.00	0.00	253.37	16.00	0.00	0.00	0.00	40.0447050	-104.5756200	0.00
116.00	0.00	253.37	116.00	0.00	0.00	0.00	40.0447050	-104.5756200	0.00
216.00	0.00	253.37	216.00	0.00	0.00	0.00	40.0447050	-104.5756200	0.00
316.00	0.00	253.37	316.00	0.00	0.00	0.00	40.0447050	-104.5756200	0.00
400.00	0.00	253.37	400.00	0.00	0.00	0.00	40.0447050	-104.5756200	0.00
416.00	0.32	253.37	416.00	-0.01	-0.01	-0.04	40.0447050	-104.5756202	2.00
516.00	2.32	253.37	515.97	-0.36	-0.67	-2.25	40.0447032	-104.5756280	2.00
616.00	4.32	253.37	615.80	-1.23	-2.33	-7.80	40.0446986	-104.5756479	2.00
716.00	6.32	253.37	715.36	-2.64	-4.98	-16.68	40.0446913	-104.5756796	2.00
816.00	8.32	253.37	814.54	-4.57	-8.63	-28.89	40.0446813	-104.5757232	2.00
916.00	10.32	253.37	913.21	-7.03	-13.27	-44.41	40.0446686	-104.5757786	2.00
1011.94	12.24	253.37	1007.29	-9.87	-18.64	-62.38	40.0446538	-104.5758428	2.00
1016.00	12.24	253.37	1011.26	-10.00	-18.89	-63.21	40.0446532	-104.5758458	0.00
1116.00	12.24	253.37	1108.99	-13.21	-24.95	-83.52	40.0446365	-104.5759183	0.00
1216.00	12.24	253.37	1206.72	-16.43	-31.02	-103.83	40.0446198	-104.5759909	0.00
1316.00	12.24	253.37	1304.45	-19.64	-37.09	-124.14	40.0446032	-104.5760634	0.00
1416.00	12.24	253.37	1402.17	-22.85	-43.16	-144.45	40.0445865	-104.5761359	0.00
1516.00	12.24	253.37	1499.90	-26.07	-49.23	-164.77	40.0445699	-104.5762085	0.00
1616.00	12.24	253.37	1597.63	-29.28	-55.30	-185.08	40.0445532	-104.5762810	0.00
1716.00	12.24	253.37	1695.36	-32.49	-61.37	-205.39	40.0445365	-104.5763536	0.00
1816.00	12.24	253.37	1793.08	-35.71	-67.43	-225.70	40.0445199	-104.5764261	0.00
1916.00	12.24	253.37	1890.81	-38.92	-73.50	-246.01	40.0445032	-104.5764987	0.00
2016.00	12.24	253.37	1988.54	-42.13	-79.57	-266.32	40.0444866	-104.5765712	0.00
2116.00	12.24	253.37	2086.26	-45.35	-85.64	-286.63	40.0444699	-104.5766438	0.00
2216.00	12.24	253.37	2183.99	-48.56	-91.71	-306.94	40.0444532	-104.5767163	0.00
2316.00	12.24	253.37	2281.72	-51.77	-97.78	-327.26	40.0444366	-104.5767888	0.00
2416.00	12.24	253.37	2379.45	-54.99	-103.85	-347.57	40.0444199	-104.5768614	0.00
2516.00	12.24	253.37	2477.17	-58.20	-109.91	-367.88	40.0444033	-104.5769339	0.00
2616.00	12.24	253.37	2574.90	-61.41	-115.98	-388.19	40.0443866	-104.5770065	0.00
2716.00	12.24	253.37	2672.63	-64.63	-122.05	-408.50	40.0443700	-104.5770790	0.00
2816.00	12.24	253.37	2770.36	-67.84	-128.12	-428.81	40.0443533	-104.5771516	0.00
2916.00	12.24	253.37	2868.08	-71.05	-134.19	-449.12	40.0443366	-104.5772241	0.00
3016.00	12.24	253.37	2965.81	-74.27	-140.26	-469.44	40.0443200	-104.5772967	0.00
3116.00	12.24	253.37	3063.54	-77.48	-146.33	-489.75	40.0443033	-104.5773692	0.00
3216.00	12.24	253.37	3161.27	-80.69	-152.39	-510.06	40.0442867	-104.5774417	0.00
3316.00	12.24	253.37	3258.99	-83.91	-158.46	-530.37	40.0442700	-104.5775143	0.00
3416.00	12.24	253.37	3356.72	-87.12	-164.53	-550.68	40.0442533	-104.5775868	0.00
3516.00	12.24	253.37	3454.45	-90.33	-170.60	-570.99	40.0442367	-104.5776594	0.00
3616.00	12.24	253.37	3552.17	-93.55	-176.67	-591.30	40.0442200	-104.5777319	0.00
3716.00	12.24	253.37	3649.90	-96.76	-182.74	-611.61	40.0442034	-104.5778045	0.00
3816.00	12.24	253.37	3747.63	-99.98	-188.81	-631.93	40.0441867	-104.5778770	0.00
3916.00	12.24	253.37	3845.36	-103.19	-194.87	-652.24	40.0441700	-104.5779496	0.00

VERDAD_WARNER_01N-64W-17-3H_REV-B.0_CODELL_PWP_05-24-17.1as									
4016.00	12.24	253.37	3943.08	-106.40	-200.94	-672.55	40.0441534	-104.5780221	0.00
4116.00	12.24	253.37	4040.81	-109.62	-207.01	-692.86	40.0441367	-104.5780946	0.00
4216.00	12.24	253.37	4138.54	-112.83	-213.08	-713.17	40.0441201	-104.5781672	0.00
4316.00	12.24	253.37	4236.27	-116.04	-219.15	-733.48	40.0441034	-104.5782397	0.00
4416.00	12.24	253.37	4333.99	-119.26	-225.22	-753.79	40.0440867	-104.5783123	0.00
4516.00	12.24	253.37	4431.72	-122.47	-231.29	-774.10	40.0440701	-104.5783848	0.00
4616.00	12.24	253.37	4529.45	-125.68	-237.36	-794.42	40.0440534	-104.5784574	0.00
4716.00	12.24	253.37	4627.17	-128.90	-243.42	-814.73	40.0440367	-104.5785299	0.00
4816.00	12.24	253.37	4724.90	-132.11	-249.49	-835.04	40.0440201	-104.5786025	0.00
4916.00	12.24	253.37	4822.63	-135.32	-255.56	-855.35	40.0440034	-104.5786750	0.00
5016.00	12.24	253.37	4920.36	-138.54	-261.63	-875.66	40.0439868	-104.5787475	0.00
5116.00	12.24	253.37	5018.08	-141.75	-267.70	-895.97	40.0439701	-104.5788201	0.00
5216.00	12.24	253.37	5115.81	-144.96	-273.77	-916.28	40.0439534	-104.5788926	0.00
5316.00	12.24	253.37	5213.54	-148.18	-279.84	-936.60	40.0439368	-104.5789652	0.00
5416.00	12.24	253.37	5311.27	-151.39	-285.90	-956.91	40.0439201	-104.5790377	0.00
5516.00	12.24	253.37	5408.99	-154.60	-291.97	-977.22	40.0439035	-104.5791103	0.00
5616.00	12.24	253.37	5506.72	-157.82	-298.04	-997.53	40.0438868	-104.5791828	0.00
5716.00	12.24	253.37	5604.45	-161.03	-304.11	-1017.84	40.0438701	-104.5792554	0.00
5816.00	12.24	253.37	5702.17	-164.24	-310.18	-1038.15	40.0438535	-104.5793279	0.00
5916.00	12.24	253.37	5799.90	-167.46	-316.25	-1058.46	40.0438368	-104.5794004	0.00
6016.00	12.24	253.37	5897.63	-170.67	-322.32	-1078.77	40.0438202	-104.5794730	0.00
6116.00	12.24	253.37	5995.36	-173.88	-328.38	-1099.09	40.0438035	-104.5795455	0.00
6216.00	12.24	253.37	6093.08	-177.10	-334.45	-1119.40	40.0437868	-104.5796181	0.00
6316.00	12.24	253.37	6190.81	-180.31	-340.52	-1139.71	40.0437702	-104.5796906	0.00
6416.00	12.24	253.37	6288.54	-183.52	-346.59	-1160.02	40.0437535	-104.5797632	0.00
6516.00	12.24	253.37	6386.27	-186.74	-352.66	-1180.33	40.0437369	-104.5798357	0.00
6616.00	12.24	253.37	6483.99	-189.95	-358.73	-1200.64	40.0437202	-104.5799082	0.00
6716.00	12.24	253.37	6581.72	-193.16	-364.80	-1220.95	40.0437035	-104.5799808	0.00
6744.08	12.24	253.37	6609.16	-194.07	-366.50	-1226.66	40.0436989	-104.5800012	0.00
6816.00	12.12	284.40	6679.54	-192.35	-366.80	-1241.29	40.0436980	-104.5800534	9.00
6916.00	16.75	316.15	6776.50	-176.67	-353.78	-1261.49	40.0437338	-104.5801255	9.00
7016.00	23.95	331.96	6870.27	-145.88	-325.41	-1281.05	40.0438116	-104.5801954	9.00
7116.00	32.03	340.47	6958.53	-100.75	-282.42	-1299.49	40.0439297	-104.5802613	9.00
7216.00	40.48	345.77	7039.12	-42.39	-225.84	-1316.37	40.0440849	-104.5803216	9.00
7316.00	49.09	349.50	7110.04	27.76	-157.09	-1331.27	40.0442737	-104.5803748	9.00
7416.00	57.79	352.35	7169.56	107.98	-77.84	-1343.81	40.0444912	-104.5804196	9.00
7516.00	66.55	354.70	7216.20	196.29	9.95	-1353.70	40.0447322	-104.5804550	9.00
7616.00	75.34	356.76	7248.82	290.52	104.11	-1360.68	40.0449907	-104.5804799	9.00
7716.00	84.14	358.66	7266.61	388.34	202.33	-1364.59	40.0452603	-104.5804939	9.00
7783.81	90.12	359.90	7270.00	455.50	270.02	-1365.44	40.0454461	-104.5804969	9.00
7816.00	90.12	359.90	7269.93	487.39	302.21	-1365.49	40.0455345	-104.5804971	0.00
7916.00	90.12	359.90	7269.73	586.46	402.21	-1365.66	40.0458090	-104.5804978	0.00
8016.00	90.12	359.90	7269.52	685.53	502.21	-1365.83	40.0460835	-104.5804984	0.00
8116.00	90.12	359.90	7269.31	784.60	602.21	-1366.00	40.0463580	-104.5804990	0.00
8216.00	90.12	359.90	7269.11	883.67	702.21	-1366.16	40.0466325	-104.5804996	0.00
8316.00	90.12	359.90	7268.90	982.74	802.21	-1366.33	40.0469070	-104.5805002	0.00
8416.00	90.12	359.90	7268.69	1081.81	902.21	-1366.50	40.0471815	-104.5805009	0.00
8516.00	90.12	359.90	7268.49	1180.88	1002.21	-1366.67	40.0474560	-104.5805015	0.00

VERDAD\_WARNER\_01N-64W-17-3H\_REV-B.0\_CODELL\_PWP\_05-24-17.1as

8616.00	90.12	359.90	7268.28	1279.95	1102.21	-1366.84	40.0477305	-104.5805021	0.00
8716.00	90.12	359.90	7268.07	1379.02	1202.21	-1367.01	40.0480050	-104.5805027	0.00
8816.00	90.12	359.90	7267.86	1478.09	1302.21	-1367.17	40.0482795	-104.5805034	0.00
8916.00	90.12	359.90	7267.66	1577.16	1402.20	-1367.34	40.0485540	-104.5805040	0.00
9016.00	90.12	359.90	7267.45	1676.23	1502.20	-1367.51	40.0488285	-104.5805046	0.00
9116.00	90.12	359.90	7267.24	1775.30	1602.20	-1367.68	40.0491031	-104.5805052	0.00
9216.00	90.12	359.90	7267.04	1874.37	1702.20	-1367.85	40.0493776	-104.5805058	0.00
9316.00	90.12	359.90	7266.83	1973.44	1802.20	-1368.02	40.0496521	-104.5805065	0.00
9416.00	90.12	359.90	7266.62	2072.51	1902.20	-1368.18	40.0499266	-104.5805071	0.00
9516.00	90.12	359.90	7266.42	2171.58	2002.20	-1368.35	40.0502011	-104.5805077	0.00
9616.00	90.12	359.90	7266.21	2270.65	2102.20	-1368.52	40.0504756	-104.5805083	0.00
9716.00	90.12	359.90	7266.00	2369.72	2202.20	-1368.69	40.0507501	-104.5805089	0.00
9816.00	90.12	359.90	7265.80	2468.79	2302.20	-1368.86	40.0510246	-104.5805096	0.00
9916.00	90.12	359.90	7265.59	2567.86	2402.20	-1369.03	40.0512991	-104.5805102	0.00
10016.00	90.12	359.90	7265.38	2666.93	2502.20	-1369.19	40.0515736	-104.5805108	0.00
10116.00	90.12	359.90	7265.17	2766.00	2602.20	-1369.36	40.0518481	-104.5805114	0.00
10216.00	90.12	359.90	7264.97	2865.07	2702.20	-1369.53	40.0521226	-104.5805121	0.00
10316.00	90.12	359.90	7264.76	2964.14	2802.20	-1369.70	40.0523971	-104.5805127	0.00
10416.00	90.12	359.90	7264.55	3063.21	2902.20	-1369.87	40.0526716	-104.5805133	0.00
10516.00	90.12	359.90	7264.35	3162.28	3002.20	-1370.04	40.0529461	-104.5805139	0.00
10616.00	90.12	359.90	7264.14	3261.35	3102.20	-1370.20	40.0532206	-104.5805145	0.00
10716.00	90.12	359.90	7263.93	3360.42	3202.20	-1370.37	40.0534951	-104.5805152	0.00
10816.00	90.12	359.90	7263.73	3459.49	3302.20	-1370.54	40.0537697	-104.5805158	0.00
10916.00	90.12	359.90	7263.52	3558.56	3402.20	-1370.71	40.0540442	-104.5805164	0.00
11016.00	90.12	359.90	7263.31	3657.63	3502.20	-1370.88	40.0543187	-104.5805170	0.00
11116.00	90.12	359.90	7263.11	3756.70	3602.20	-1371.05	40.0545932	-104.5805176	0.00
11216.00	90.12	359.90	7262.90	3855.77	3702.20	-1371.21	40.0548677	-104.5805183	0.00
11316.00	90.12	359.90	7262.69	3954.84	3802.20	-1371.38	40.0551422	-104.5805189	0.00
11416.00	90.12	359.90	7262.49	4053.91	3902.20	-1371.55	40.0554167	-104.5805195	0.00
11516.00	90.12	359.90	7262.28	4152.98	4002.20	-1371.72	40.0556912	-104.5805201	0.00
11616.00	90.12	359.90	7262.07	4252.05	4102.20	-1371.89	40.0559657	-104.5805207	0.00
11716.00	90.12	359.90	7261.86	4351.12	4202.19	-1372.06	40.0562402	-104.5805214	0.00
11816.00	90.12	359.90	7261.66	4450.19	4302.19	-1372.22	40.0565147	-104.5805220	0.00
11916.00	90.12	359.90	7261.45	4549.26	4402.19	-1372.39	40.0567892	-104.5805226	0.00
12016.00	90.12	359.90	7261.24	4648.33	4502.19	-1372.56	40.0570637	-104.5805232	0.00
12116.00	90.12	359.90	7261.04	4747.40	4602.19	-1372.73	40.0573382	-104.5805239	0.00
12216.00	90.12	359.90	7260.83	4846.47	4702.19	-1372.90	40.0576127	-104.5805245	0.00
12316.00	90.12	359.90	7260.62	4945.54	4802.19	-1373.07	40.0578872	-104.5805251	0.00
12416.00	90.12	359.90	7260.42	5044.61	4902.19	-1373.24	40.0581617	-104.5805257	0.00
12516.00	90.12	359.90	7260.21	5143.68	5002.19	-1373.40	40.0584362	-104.5805263	0.00
12616.00	90.12	359.90	7260.00	5242.75	5102.19	-1373.57	40.0587107	-104.5805270	0.00
12716.00	90.12	359.90	7259.80	5341.82	5202.19	-1373.74	40.0589853	-104.5805276	0.00
12816.00	90.12	359.90	7259.59	5440.89	5302.19	-1373.91	40.0592598	-104.5805282	0.00
12916.00	90.12	359.90	7259.38	5539.96	5402.19	-1374.08	40.0595343	-104.5805288	0.00
13016.00	90.12	359.90	7259.17	5639.03	5502.19	-1374.25	40.0598088	-104.5805294	0.00
13116.00	90.12	359.90	7258.97	5738.10	5602.19	-1374.41	40.0600833	-104.5805301	0.00
13216.00	90.12	359.90	7258.76	5837.16	5702.19	-1374.58	40.0603578	-104.5805307	0.00
13316.00	90.12	359.90	7258.55	5936.23	5802.19	-1374.75	40.0606323	-104.5805313	0.00

VERDAD_WARNER_01N-64W-17-3H__REV-B.0_CODELL__PWP_05-24-17.1as									
13416.00	90.12	359.90	7258.35	6035.30	5902.19	-1374.92	40.0609068	-104.5805319	0.00
13516.00	90.12	359.90	7258.14	6134.37	6002.19	-1375.09	40.0611813	-104.5805326	0.00
13616.00	90.12	359.90	7257.93	6233.44	6102.19	-1375.26	40.0614558	-104.5805332	0.00
13716.00	90.12	359.90	7257.73	6332.51	6202.19	-1375.42	40.0617303	-104.5805338	0.00
13816.00	90.12	359.90	7257.52	6431.58	6302.19	-1375.59	40.0620048	-104.5805344	0.00
13916.00	90.12	359.90	7257.31	6530.65	6402.19	-1375.76	40.0622793	-104.5805350	0.00
14016.00	90.12	359.90	7257.11	6629.72	6502.19	-1375.93	40.0625538	-104.5805357	0.00
14116.00	90.12	359.90	7256.90	6728.79	6602.19	-1376.10	40.0628283	-104.5805363	0.00
14216.00	90.12	359.90	7256.69	6827.86	6702.19	-1376.27	40.0631028	-104.5805369	0.00
14316.00	90.12	359.90	7256.49	6926.93	6802.19	-1376.43	40.0633773	-104.5805375	0.00
14416.00	90.12	359.90	7256.28	7026.00	6902.19	-1376.60	40.0636518	-104.5805381	0.00
14516.00	90.12	359.90	7256.07	7125.07	7002.18	-1376.77	40.0639263	-104.5805388	0.00
14616.00	90.12	359.90	7255.86	7224.14	7102.18	-1376.94	40.0642009	-104.5805394	0.00
14716.00	90.12	359.90	7255.66	7323.21	7202.18	-1377.11	40.0644754	-104.5805400	0.00
14816.00	90.12	359.90	7255.45	7422.28	7302.18	-1377.28	40.0647499	-104.5805406	0.00
14916.00	90.12	359.90	7255.24	7521.35	7402.18	-1377.44	40.0650244	-104.5805412	0.00
15016.00	90.12	359.90	7255.04	7620.42	7502.18	-1377.61	40.0652989	-104.5805419	0.00
15116.00	90.12	359.90	7254.83	7719.49	7602.18	-1377.78	40.0655734	-104.5805425	0.00
15216.00	90.12	359.90	7254.62	7818.56	7702.18	-1377.95	40.0658479	-104.5805431	0.00
15316.00	90.12	359.90	7254.42	7917.63	7802.18	-1378.12	40.0661224	-104.5805437	0.00
15416.00	90.12	359.90	7254.21	8016.70	7902.18	-1378.29	40.0663969	-104.5805444	0.00
15516.00	90.12	359.90	7254.00	8115.77	8002.18	-1378.45	40.0666714	-104.5805450	0.00
15616.00	90.12	359.90	7253.80	8214.84	8102.18	-1378.62	40.0669459	-104.5805456	0.00
15716.00	90.12	359.90	7253.59	8313.91	8202.18	-1378.79	40.0672204	-104.5805462	0.00
15816.00	90.12	359.90	7253.38	8412.98	8302.18	-1378.96	40.0674949	-104.5805468	0.00
15916.00	90.12	359.90	7253.18	8512.05	8402.18	-1379.13	40.0677694	-104.5805475	0.00
16016.00	90.12	359.90	7252.97	8611.12	8502.18	-1379.30	40.0680439	-104.5805481	0.00
16116.00	90.12	359.90	7252.76	8710.19	8602.18	-1379.46	40.0683184	-104.5805487	0.00
16216.00	90.12	359.90	7252.55	8809.26	8702.18	-1379.63	40.0685929	-104.5805493	0.00
16316.00	90.12	359.90	7252.35	8908.33	8802.18	-1379.80	40.0688674	-104.5805499	0.00
16416.00	90.12	359.90	7252.14	9007.40	8902.18	-1379.97	40.0691419	-104.5805506	0.00
16516.00	90.12	359.90	7251.93	9106.47	9002.18	-1380.14	40.0694165	-104.5805512	0.00
16616.00	90.12	359.90	7251.73	9205.54	9102.18	-1380.31	40.0696910	-104.5805518	0.00
16716.00	90.12	359.90	7251.52	9304.61	9202.18	-1380.48	40.0699655	-104.5805524	0.00
16816.00	90.12	359.90	7251.31	9403.68	9302.18	-1380.64	40.0702400	-104.5805531	0.00
16916.00	90.12	359.90	7251.11	9502.75	9402.18	-1380.81	40.0705145	-104.5805537	0.00
17016.00	90.12	359.90	7250.90	9601.82	9502.18	-1380.98	40.0707890	-104.5805543	0.00
17116.00	90.12	359.90	7250.69	9700.89	9602.18	-1381.15	40.0710635	-104.5805549	0.00
17216.00	90.12	359.90	7250.49	9799.96	9702.18	-1381.32	40.0713380	-104.5805555	0.00
17316.00	90.12	359.90	7250.28	9899.03	9802.17	-1381.49	40.0716125	-104.5805562	0.00
17416.00	90.12	359.90	7250.07	9998.10	9902.17	-1381.65	40.0718870	-104.5805568	0.00
17450.61	90.12	359.90	7250.00	10032.39	9936.78	-1381.71	40.0719820	-104.5805570	0.00