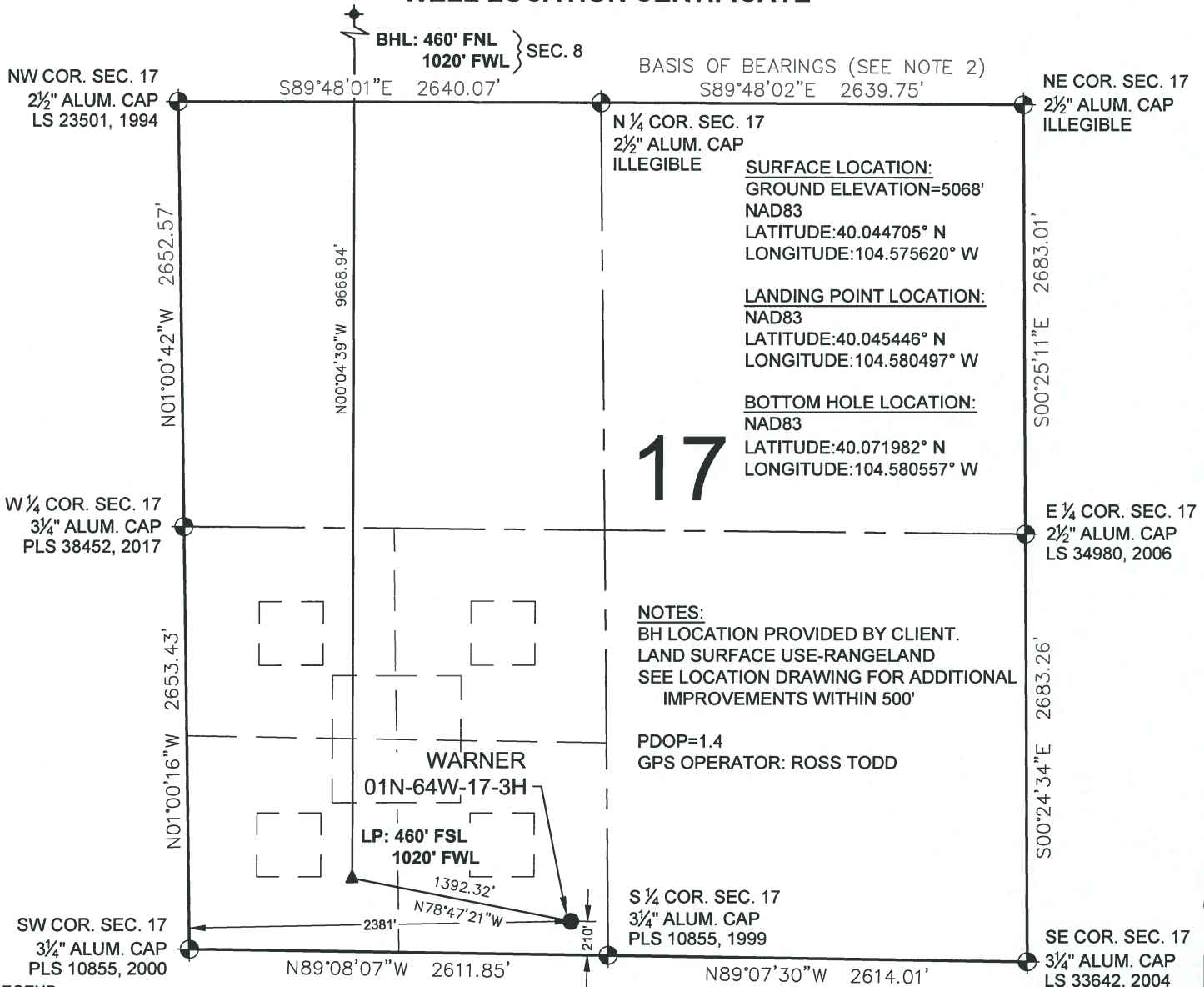


# WARNER 01N-64W-17-3H WELL LOCATION CERTIFICATE



## WELL WARNER 01N-64W-17-3H TO BE LOCATED 210' FSL & 2381' FWL

I, BRIAN C. RITZ, A LICENSED PROFESSIONAL LAND SURVEYOR IN THE STATE OF COLORADO DO HEREBY CERTIFY TO VERDAD RESOURCES LLC., THAT THE SURVEY AND WELL LOCATION CERTIFICATE SHOWN HEREON WERE DONE BY ME OR UNDER MY DIRECT SUPERVISION AND THAT THE DRAWING SHOWN HEREON ACCURATELY DEPICTS THE PROPOSED LOCATION OF THE WELL. THIS CERTIFICATE DOES NOT REPRESENT A LAND SURVEY PLAT OR IMPROVEMENT SURVEY PLAT AS DEFINED BY C.R.S. 38-51-102 AND CANNOT BE RELIED UPON TO DETERMINE OWNERSHIP.

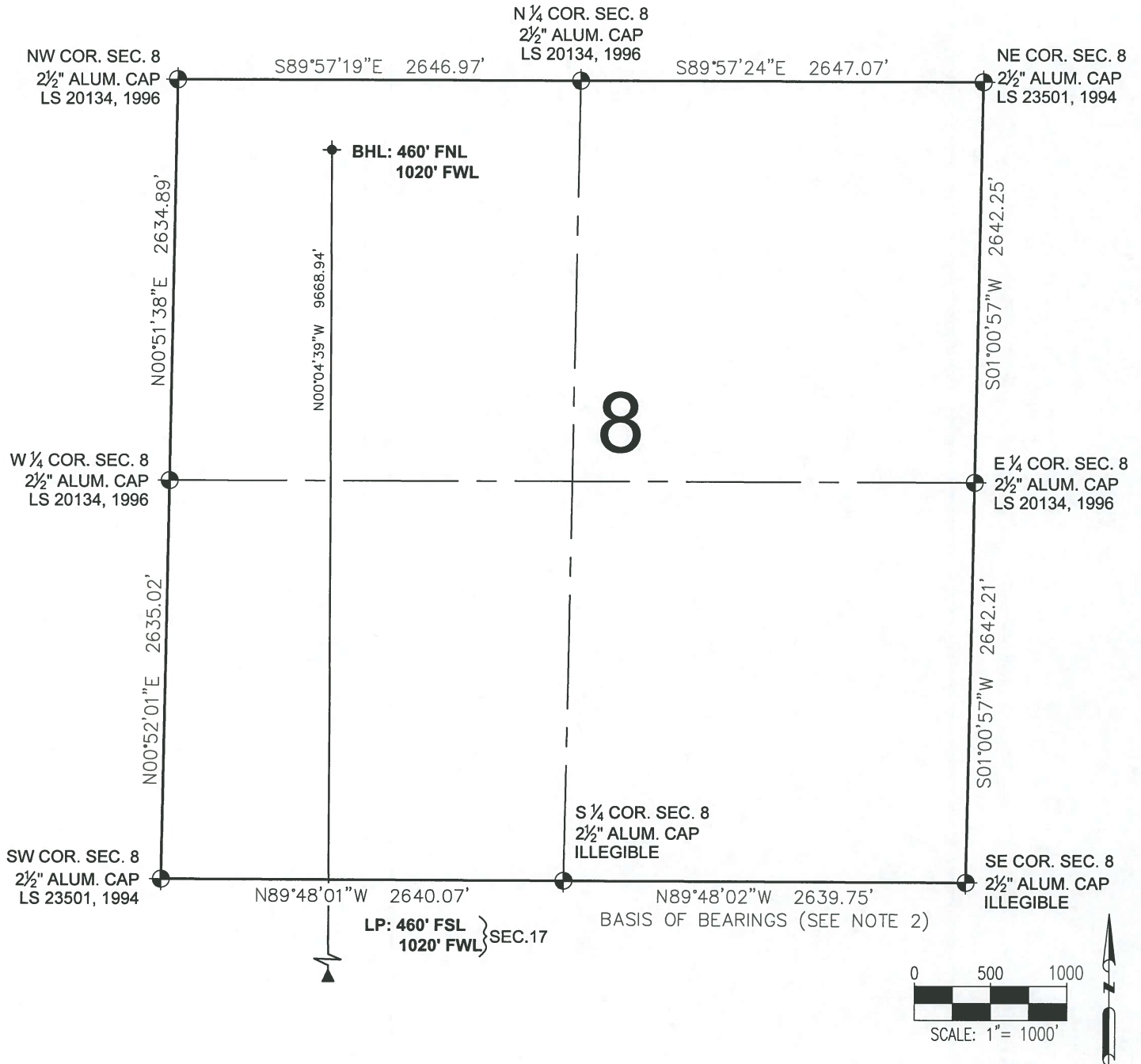
BRIAN C. RITZ, PLS 38452  
COLORADO LICENSED PROFESSIONAL LAND SURVEYOR  
FOR AND ON BEHALF OF P.F.S., LLC  
d.b.a. ASCENT GEOMATICS SOLUTIONS



SHEET 1 OF 2

<b>PREPARED BY:</b>  7535 Hilltop Circle Denver, CO 80221 (303) 928-7128 www.ascentgeomatics.com	<b>FIELD DATE:</b> 03-17-17 <b>DRAWING DATE:</b> 05-15-17 <b>BY:</b> MDC <b>CHECKED BY:</b> MMP	<b>WELL NAME:</b> WARNER 01N-64W-17-3H <b>SURFACE LOCATION:</b> SE 1/4 SW 1/4 SEC. 17, T1N, R64W, 6TH P.M. WELD COUNTY, COLORADO	<b>PREPARED FOR:</b> 
---	--	--	--------------------------

# WARNER 01N-64W-17-3H WELL LOCATION CERTIFICATE





## LEGEND

- ◆ = EXISTING MONUMENT
- = CALCULATED POSITION
- = PROPOSED WELL
- ◆ = EXISTING WELL
- ◆ = BOTTOM HOLE
- ▲ = LANDING POINT
- LP = LANDING POINT
- BHL = BOTTOM HOLE LOCATION

BRIAN C. RITZ, PLS 38452  
COLORADO LICENSED PROFESSIONAL LAND SURVEYOR  
FOR AND ON BEHALF OF P.F.S., LLC  
d.b.a. ASCENT GEOMATICS SOLUTIONS



SHEET 2 OF 2

<b>PREPARED BY:</b>  7535 Hilltop Circle Denver, CO 80221 (303) 928-7128 www.ascentgeomatics.com	<b>FIELD DATE:</b> 03-17-17 <b>DRAWING DATE:</b> 05-15-17 <b>BY:</b> MDC <b>CHECKED BY:</b> MMP	<b>WELL NAME:</b> WARNER 01N-64W-17-3H <b>SURFACE LOCATION:</b> SE 1/4 SW 1/4 SEC. 17, T1N, R64W, 6TH P.M. WELD COUNTY, COLORADO	<b>PREPARED FOR:</b> 
---	--	--	---