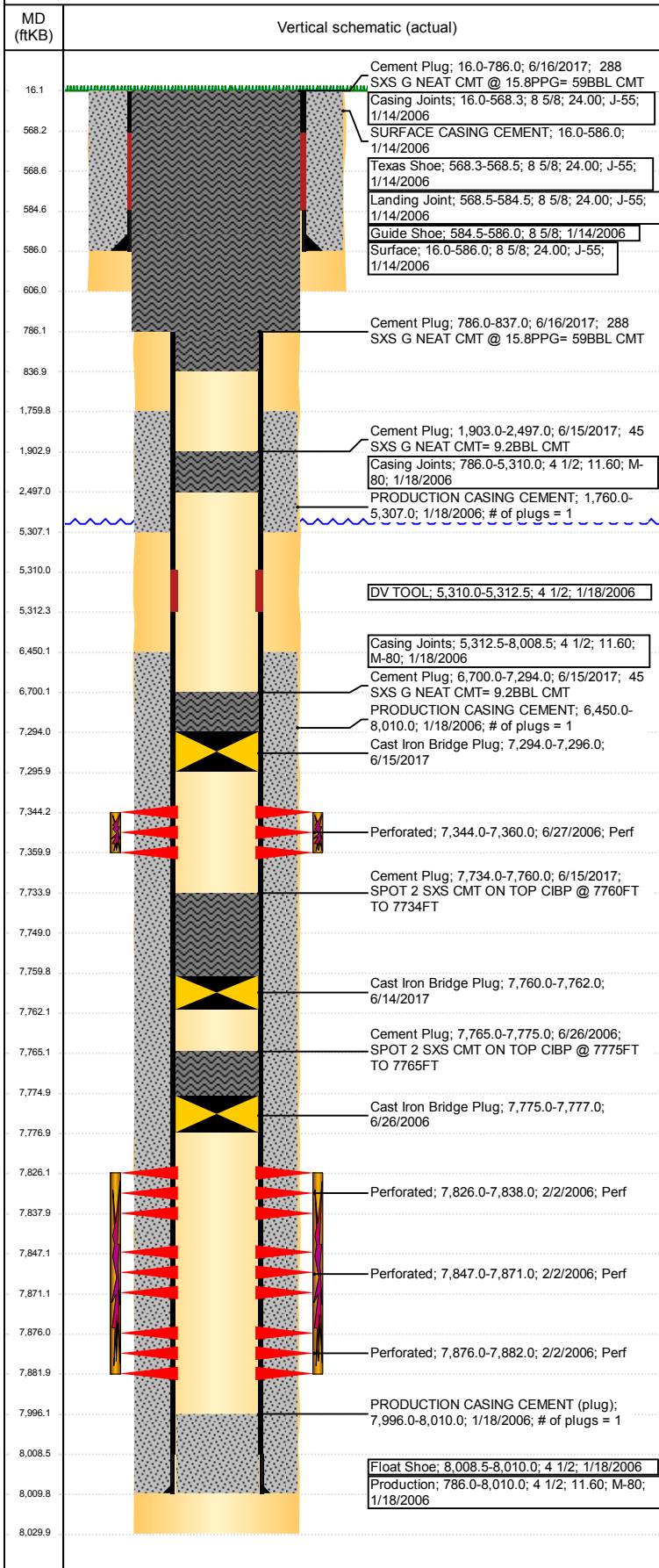


Wellbore Schematic Input Report

Well Name: AUSTYN J09-05

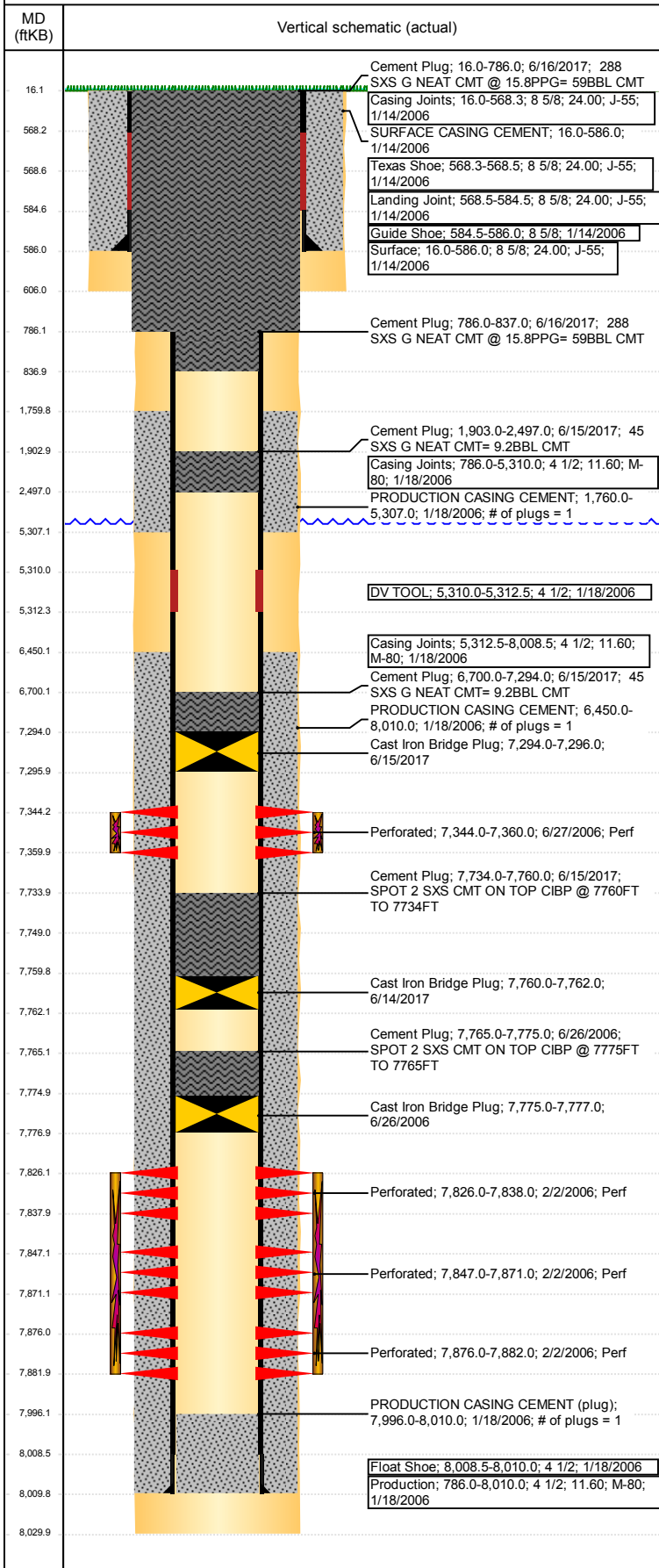
DEVIATED - ORIGINAL HOLE, 7/17/2017 9:39:13 AM



Well Header								
API 05-123-23260	Business Unit DJ BASIN		District 15		Well Config DEVIATED			
Original KB Elevation (ft) 4,775	KB - GL / MSL (ftKB) 16.00		Spud Date 1/13/2006		P & A Date 6/16/2017			
Comment DIRECTIONAL DV TOOL @ +/- 5310, DRILLED OUT 2/1/2006								
Directions To Well W. 10TH ST. & 71ST AVE. SOUTH 0.2, E. INTO								
Congressional Location								
Quarter 3 NW	Quarter 4 NW	Section 9	Township 5	Twntshp N/S Dir N	Range 66	Range E/W Dir W		
Bottom Hole Location								
North-South Distance (ft) 2,028.0		From N or S Line FNL		East-West Distance (ft) 781.0		From E or W Line FWL		
Plug Back Total Depths								
Date	Depth (ftKB)	Method		Com				
1/17/2006	7,996.0	CASING TALLY		CBL DEPTH LOGGER MOST RECENT C/O 158 FT OF RAT HOLE WASH SAND F/ 7501FTKB TO 7749FTKB W/ 239 T...				
2/2/2006	7,982.0	CASED HOLE LOG						
12/20/2011	7,518.0	TAG						
6/14/2017	7,749.0	TAG						
Wellbore Sections								
Section Des		Size (in)		Act Top, MD (ftKB)		Act Btm, MD (ftKB)		
SURFACE		12 1/4		16		606		
PRODUCTION		7 7/8		606		8,030		
Zone Statuses								
Zone Name	Status Date	Status	Fluid Type	Job	Prod Method			
J SAND	2/23/2006	PR	Gas	DRILLING/CO...	Flowing			
J SAND	6/26/2006	SI		RECOMPLETI...				
J SAND	6/15/2017	P&A		PLUG AND AB...				
CODELL	7/16/2006	PR		RECOMPLETI...				
CODELL	2/17/2010	PR	Water					
CODELL	6/15/2017	P&A		PLUG AND AB...				
Casing Strings								
Surface, 586.0ftKB								
Casing Description Surface		Run Date 1/14/2006	OD (in) 8 5/8	Wt/Len (l... 24.00	Grade J-55	Top, MD (ft... 16.0	MD (ftKB) 586.0	
Production, 8,010.0ftKB								
Casing Description Production		Run Date 1/18/2006	OD (in) 4 1/2	Wt/Len (l... 11.60	Grade M-80	Top, MD (ft... 16.0	MD (ftKB) 8,010.0	
Cement								
Description SURFACE CASING CEMENT				Top Depth (ftKB) 16.0		Bottom Depth (ftKB) 586.0		
Description PRODUCTION CASING CEMENT				Top Depth (ftKB) 1,760.0		Bottom Depth (ftKB) 5,307.0		
Description PRODUCTION CASING CEMENT				Top Depth (ftKB) 6,450.0		Bottom Depth (ftKB) 8,010.0		
Description Cement Plug				Top Depth (ftKB) 7,765.0		Bottom Depth (ftKB) 7,775.0		
Description Cement Plug				Top Depth (ftKB) 7,734.0		Bottom Depth (ftKB) 7,760.0		
Description Cement Plug				Top Depth (ftKB) 6,700.0		Bottom Depth (ftKB) 7,294.0		
Description Cement Plug				Top Depth (ftKB) 1,903.0		Bottom Depth (ftKB) 2,497.0		
Description Cement Plug				Top Depth (ftKB) 786.0		Bottom Depth (ftKB) 837.0		
Description Cement Plug				Top Depth (ftKB) 16.0		Bottom Depth (ftKB) 786.0		
Tubing Strings								
Tubing Description Tubing		Run Date 6/27/2006	String... 2 3/8	ID (in) 2.00	Wt (lb/ft) 4.70	Grade J-55	Len (ft) 7,317.00	Set De...
Tubing Description Tubing - Production		Run Date 12/19/2011	String... 2 3/8	ID (in) 2.00	Wt (lb/ft) 4.70	Grade J-55	Len (ft) 7,316.55	Set De...
Other In Hole								
Run Date		Des			OD (in)	Top (ftKB)	Btm (ftKB)	
6/26/2006		Cast Iron Bridge Plug			3.99	7,775.0	7,777.0	

Well Name: AUSTYN J09-05

DEVIATED - ORIGINAL HOLE, 7/17/2017 9:39:14 AM



Other In Hole				
Run Date	Des	OD (in)	Top (ftKB)	Btm (ftKB)
6/14/2017	Cast Iron Bridge Plug	3.99	7,760.0	7,762.0
6/15/2017	Cast Iron Bridge Plug	3.99	7,294.0	7,296.0

Logs				
Date	Type	Top, MD (ftKB)	Btm, MD (ftKB)	
1/18/2006	COMPENSATED DENSITY	3,650.0	8,010.0	
1/18/2006	INDUCTION	586.0	8,030.0	
2/2/2006	CBL/CCL/GR	1,550.0	7,981.0	
6/9/2017	GYRO	16.0	7,450.0	

Perforation Data					
Linked Zone	Bnch/St g	Sum of Entered Shot Total	Top (ftKB)	Btm (ftKB)	Date
CODELL, ORIGINAL HOLE		64	7,344.00	7,360.00	6/27/2006
J SAND, ORIGINAL HOLE		48	7,826.00	7,838.00	2/2/2006
J SAND, ORIGINAL HOLE		96	7,847.00	7,871.00	2/2/2006
J SAND, ORIGINAL HOLE		24	7,876.00	7,882.00	2/2/2006
Total (Sum)		232			

Stimulation Intervals		
Start Date	Primary Job Type	
2/15/2006	DRILLING/COMPLETION - ORIGINAL	
Technical Result	Tech Result Details	Tech Result Note
Comment		
Start Date	Primary Job Type	
7/14/2006	RECOMPLETION	
Technical Result	Tech Result Details	Tech Result Note
Comment		