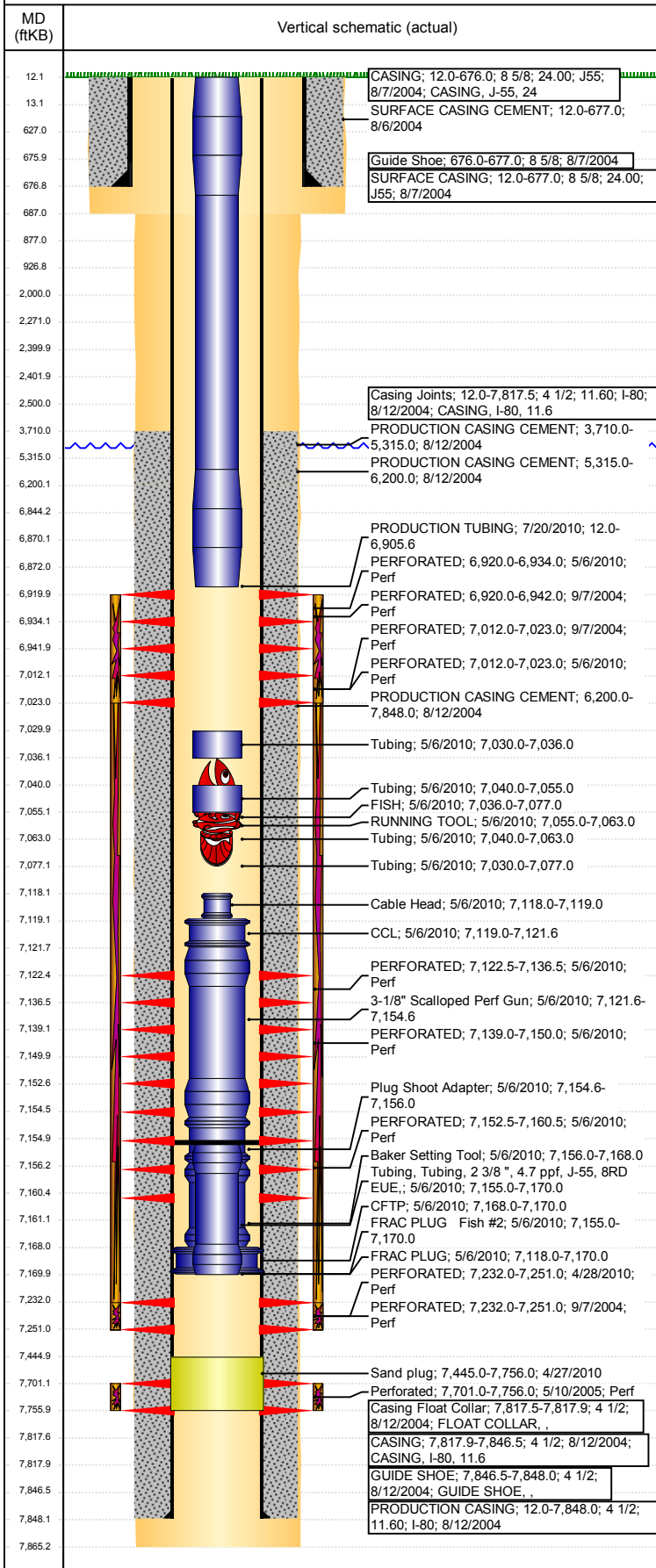


VERTICAL - ORIGINAL HOLE, 7/18/2017 12:08:21 PM

Report Printed: 7/18/2017

Well Name: **EATON 12-19**

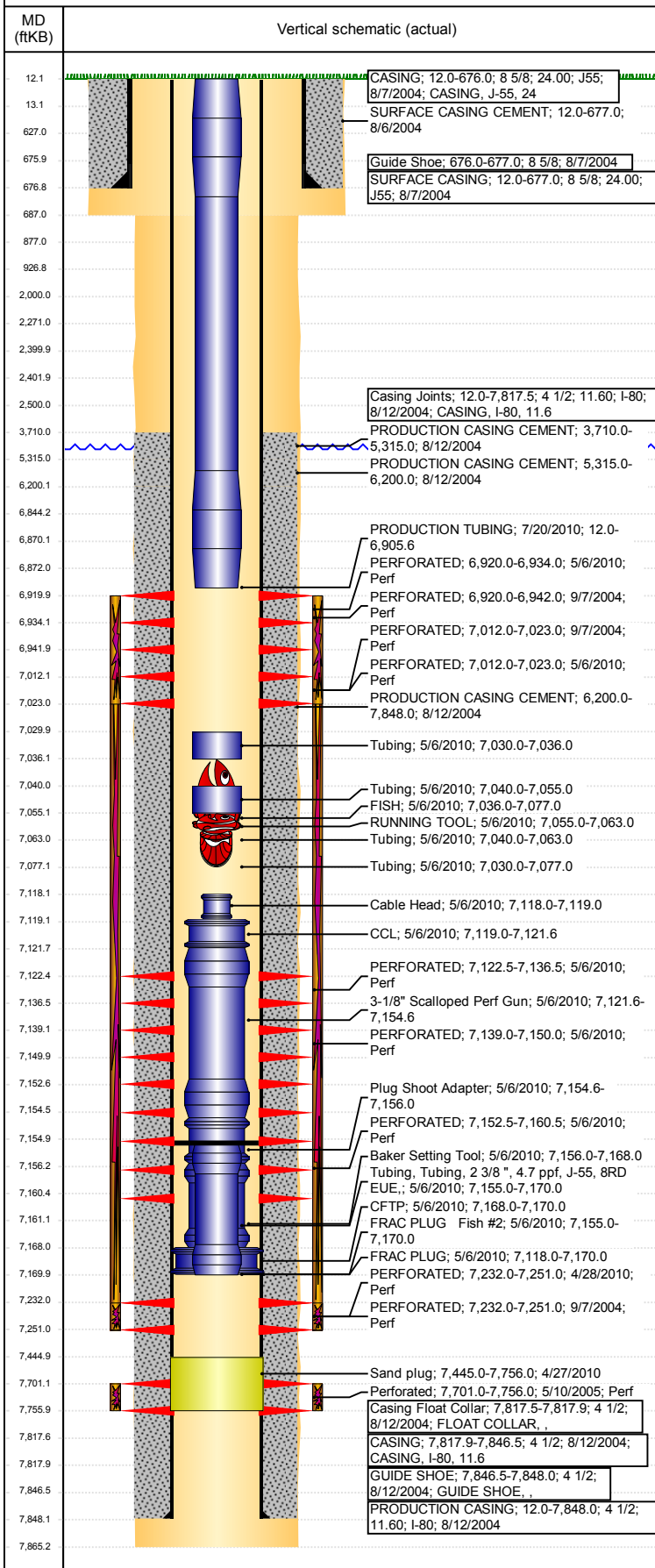
VERTICAL - ORIGINAL HOLE, 7/18/2017 12:08:23 PM



Cement							
Description Shoe Plug					Top Depth (ftKB) 13.0	Bottom Depth (ftKB) 627.0	
Description Shoe Plug					Top Depth (ftKB) 627.0	Bottom Depth (ftKB) 877.0	
Description Shoe Plug					Top Depth (ftKB) 877.0	Bottom Depth (ftKB) 927.0	
Tubing Strings							
Tubing Description PRODUCTION TUBING	Run Date 5/17/2005	String... 2 3/8	ID (in)	Wt (lb/ft)	Grade J55	Len (ft) 7,631.00	Set De...
Tubing Description FRAC PLUG Fish #2	Run Date 5/6/2010	String... 2 3/8	ID (in)	Wt (lb/ft) 4.70	Grade J55	Len (ft) 15.00	Set De...
Tubing Components							
Item Des	OD (in)	Wt (lb/ft)	Grade	Jts	Len (ft)	Btm (ftKB)	Btm (TVD) (ftKB)
Tubing, Tubing, 2 3/8 ", 4.7 ppf, J-55, 8RD EUE,	2 3/8	4.70	J55	1	15.00	7,170.0	
Tubing Description FRAC PLUG	Run Date 5/6/2010	String... 3 1/8	ID (in)	Wt (lb/ft)	Grade	Len (ft) 52.00	Set De...
Tubing Components							
Item Des	OD (in)	Wt (lb/ft)	Grade	Jts	Len (ft)	Btm (ftKB)	Btm (TVD) (ftKB)
Cable Head	1 1/2			1	1.00	7,119.0	
CCL	3 1/8			1	2.58	7,121.6	
3-1/8" Scalloped Perf Gun	3 1/8			1	33.00	7,154.6	
Plug Shoot Adapter	3 1/8			1	1.42	7,156.0	
Baker Setting Tool	3 1/8			1	12.00	7,168.0	
CFTP	4 1/2			1	2.00	7,170.0	
Tubing Description Tubing	Run Date 5/6/2010	String... 2 3/8	ID (in) 2.00	Wt (lb/ft) 4.70	Grade J-55	Len (ft) 23.00	Set De...
Tubing Components							
Item Des	OD (in)	Wt (lb/ft)	Grade	Jts	Len (ft)	Btm (ftKB)	Btm (TVD) (ftKB)
Tubing	2 3/8	4.70	J-55	1	15.00	7,055.0	
RUNNING TOOL	2 3/8	4.70			8.00	7,063.0	
Tubing Description Tubing	Run Date 5/6/2010	String... 2 3/8	ID (in) 2.00	Wt (lb/ft)	Grade	Len (ft) 47.00	Set De...
Tubing Components							
Item Des	OD (in)	Wt (lb/ft)	Grade	Jts	Len (ft)	Btm (ftKB)	Btm (TVD) (ftKB)
Tubing	2 3/8	4.70	N-80	1	6.00	7,036.0	
FISH	2 3/8				41.00	7,077.0	
Tubing Description PRODUCTION TUBING	Run Date 7/20/2010	String... 2 3/8	ID (in)	Wt (lb/ft) 4.70	Grade N80	Len (ft) 6,893.60	Set De...
Other In Hole							
Run Date	Des				OD (in)	Top (ftKB)	Btm (ftKB)
4/27/2010	Sand plug				4 1/2	7,445.0	7,756.0
7/17/2017	Cast Iron Bridge Plug				4	6,870.0	6,872.0
7/17/2017	Cement Retainer				4	2,400.0	2,402.0
Logs							
Date	Type				Top, MD (ftKB)	Btm, MD (ftKB)	
8/11/2004	COMPENSATED DENSITY				3,800.0	7,843.0	
8/11/2004	DIFL/DENS/GR/GRD/CAL				677.0	7,863.0	
9/3/2004	ACOUSTIC				3,297.0	7,809.0	
Perforation Data							
Linked Zone	Bnch/St g	Sum of Entered Shot Total	Top (ftKB)		Btm (ftKB)		Date
NIOBRARA, ORIGINAL HOLE		0	2,500.00		2,500.00		7/17/2017
NIOBRARA, ORIGINAL HOLE		75	6,920.00		6,942.00		9/7/2004
NIOBRARA, ORIGINAL HOLE		50	6,920.01		6,934.01		5/6/2010
NIOBRARA, ORIGINAL HOLE		75	7,012.00		7,023.00		9/7/2004
NIOBRARA, ORIGINAL HOLE		50	7,012.01		7,023.01		5/6/2010
CODELL, ORIGINAL HOLE		66	7,122.51		7,136.51		5/6/2010

Well Name: **EATON 12-19**

VERTICAL - ORIGINAL HOLE, 7/18/2017 12:08:24 PM



Perforation Data					
Linked Zone	Bnch/St g	Sum of Entered Shot Total	Top (ftKB)	Btm (ftKB)	Date
CODELL, ORIGINAL HOLE		66	7,139.01	7,150.01	5/6/2010
CODELL, ORIGINAL HOLE		66	7,152.51	7,160.51	5/6/2010
CODELL, ORIGINAL HOLE		19	7,232.00	7,251.00	4/28/2010
CODELL, ORIGINAL HOLE		75	7,232.00	7,251.00	9/7/2004
CODELL, ORIGINAL HOLE		110	7,701.00	7,756.00	5/10/2005
Total (Sum)		652			

Stimulation Intervals		
Start Date	Primary Job Type	
9/15/2004	DEVELOPMENT	
Technical Result	Tech Result Details	Tech Result Note
Comment		
Start Date	Primary Job Type	
9/15/2004	DEVELOPMENT	
Technical Result	Tech Result Details	Tech Result Note
Comment		
Start Date	Primary Job Type	
5/6/2010	DEVELOPMENT	
Technical Result	Tech Result Details	Tech Result Note
Comment		
Start Date	Primary Job Type	
5/13/2005	DEVELOPMENT	
Technical Result	Tech Result Details	Tech Result Note
Comment		
Start Date	Primary Job Type	
5/6/2010	DEVELOPMENT	
Technical Result	Tech Result Details	Tech Result Note
Comment		