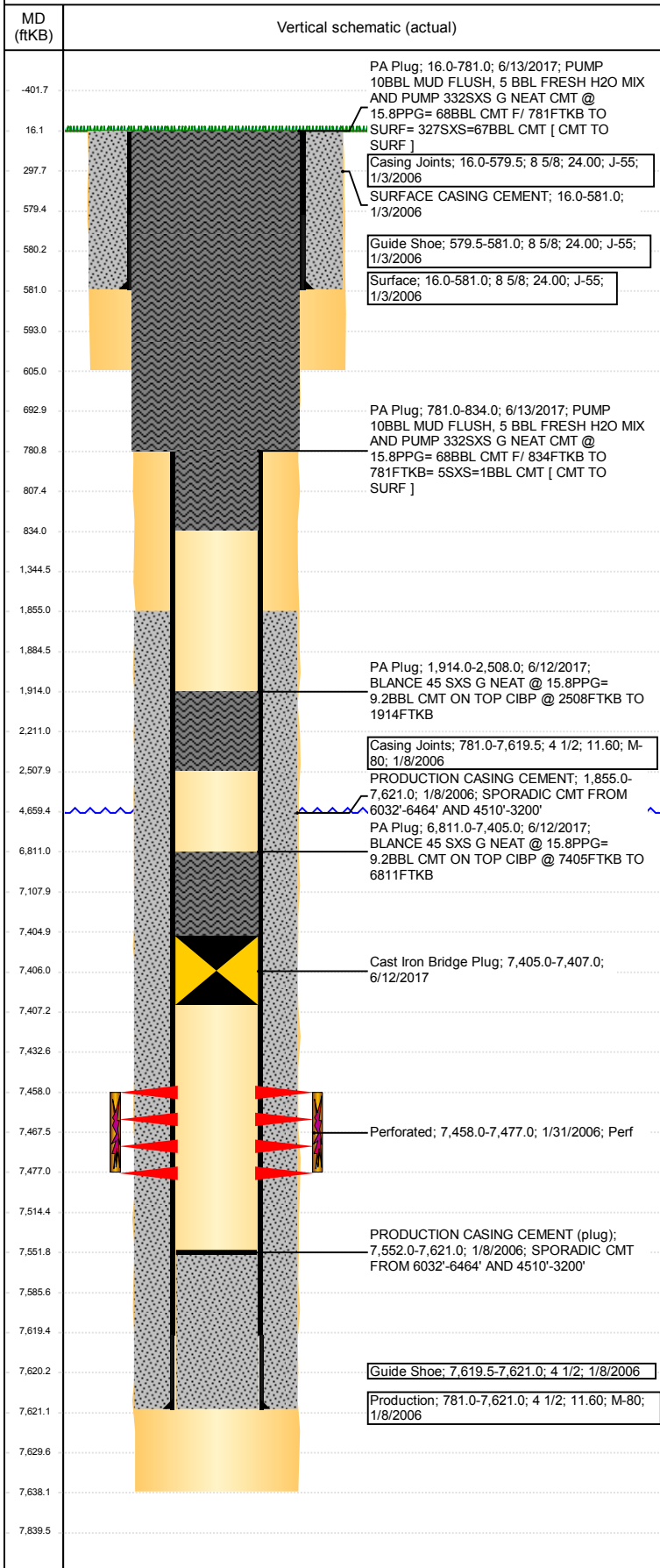


Well Name: AUSTYN J09-06

DEVIATED - ORIGINAL HOLE, 7/17/2017 9:38:12 AM



Well Header							
API	05-123-23258	Business Unit	DJ BASIN	District	15	Well Config	DEVIATED
Original KB Elevation (ft)	4,775	KB - GL / MSL (ftKB)	16.00	Spud Date	1/3/2006	P & A Date	6/13/2017
Comment							
SPUD DATE DISCREPANCY - REPORTS SAY 1/3/2006 STATE COMPLETION REPORT SAYS 1/4/2006							
Directions To Well							
71ST AVE & 10TH ST, S 1/4 E 1/10 INTO							
Congressional Location							
Quarter 3	Quarter 4	Section	Township	Twntshp N/S Dir	Range	Range E/W Dir	
SE	NW	9	5	N	66	W	
Bottom Hole Location							
North-South Distance (ft)	From N or S Line	East-West Distance (ft)	From E or W Line				
1,017.0	FNL	1,084.0	FWL				
Plug Back Total Depths							
Date	Depth (ftKB)	Method	Com				
1/8/2006	7,577.0	CASING TALLY	SHOE JOINT				
1/27/2006	7,552.0	CASED HOLE LOG	DEPTH LOGGER ON CBL				
Wellbore Sections							
Section Des	Size (in)	Act Top, MD (ftKB)	Act Btm, MD (ftKB)				
SURFACE	12 1/4	16	605				
PRODUCTION	7 7/8	605	7,638				
Zone Statuses							
Zone Name	Status Date	Status	Fluid Type	Job	Prod Method		
CODELL	2/15/2006	PR	Water	DRILLING/CO...	Flowing		
CODELL	3/17/2010	PR					
CODELL	6/12/2017	P&A		PLUG AND AB...			
Casing Strings							
Surface, 581.0ftKB							
Casing Description	Run Date	OD (in)	Wt/Len (l...)	Grade	Top, MD (ft...)	MD (ftKB)	
Surface	1/3/2006	8 5/8	24.00	J-55	16.0	581.0	
Production, 7,621.0ftKB							
Casing Description	Run Date	OD (in)	Wt/Len (l...)	Grade	Top, MD (ft...)	MD (ftKB)	
Production	1/8/2006	4 1/2	11.60	M-80	16.0	7,621.0	
Cement							
Description	Top Depth (ftKB)	Bottom Depth (ftKB)					
SURFACE CASING CEMENT	16.0	581.0					
PRODUCTION CASING CEMENT	1,855.0	7,621.0					
PA Plug	6,811.0	7,405.0					
PA Plug	1,914.0	2,508.0					
PA Plug	781.0	834.0					
PA Plug	16.0	781.0					
Tubing Strings							
Tubing Description	Run Date	String ...	ID (in)	Wt (lb/ft)	Grade	Len (ft) Set De...	
Tubing - Production	1/31/2006	2 3/8	2.00	4.70	J-55	7,430.00	
Other In Hole							
Run Date	Des	OD (in)	Top (ftKB)	Btm (ftKB)			
6/12/2017	Cast Iron Bridge Plug	3.99	7,405.0	7,407.0			
Logs							
Date	Type	Top, MD (ftKB)	Btm, MD (ftKB)				
1/7/2006	COMPENSATED DENSITY	581.0	7,604.0				
1/8/2006	INDUCTION	581.0	7,624.0				
1/27/2006	CEMENT BOND	5,200.0	7,551.0				
6/8/2017	GYRO	0.0	7,350.0				
Perforation Data							
Linked Zone	Bnch/St g	Sum of Entered Shot Total	Top (ftKB)	Btm (ftKB)	Date		
CODELL, ORIGINAL HOLE		76	7,458.00	7,477.00	1/31/2006		
Total (Sum)		76					

Well Name: AUSTYN J09-06

DEVIATED - ORIGINAL HOLE, 7/17/2017 9:38:12 AM

Stimulation Intervals

Start Date 2/13/2006	Primary Job Type DRILLING/COMPLETION - ORIGINAL	
Technical Result	Tech Result Details	Tech Result Note

Comment

