

Inspection Photos

7/14/2017

Operator: NOBLE ENERGY INC - 100322

Location ID: 327040

Inspection Doc. Number: 682502418

Weld County, CO

Aaron Trujillo

Reclamation Specialist

COGCC



Inspection Photos
Operator: NOBLE ENERGY INC - 100322
Location ID: 327040



Photo 1: Photo taken from the well location, facing south. Photo shows vegetation over the reclamation area. Crop is uniform in distribution and height. Crop height is 6 feet in height or greater.



Photo 2: Photo taken from the battery location. Photo shows crop establishment is sparse and stunted when compared to the adjacent reference area.

Inspection Photos
Operator: NOBLE ENERGY INC - 100322
Location ID: 327040

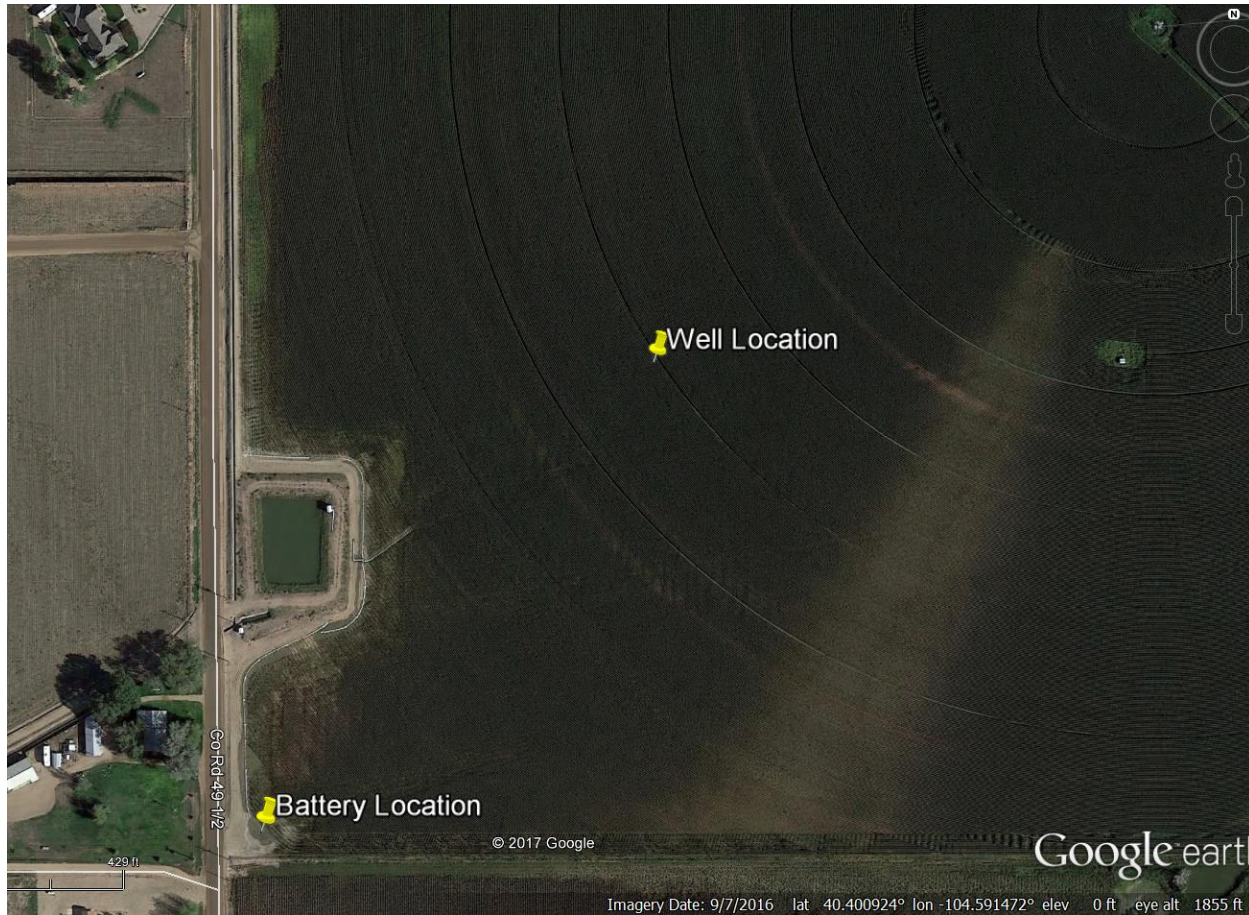


Photo 3: Aerial image shows well location and battery location.