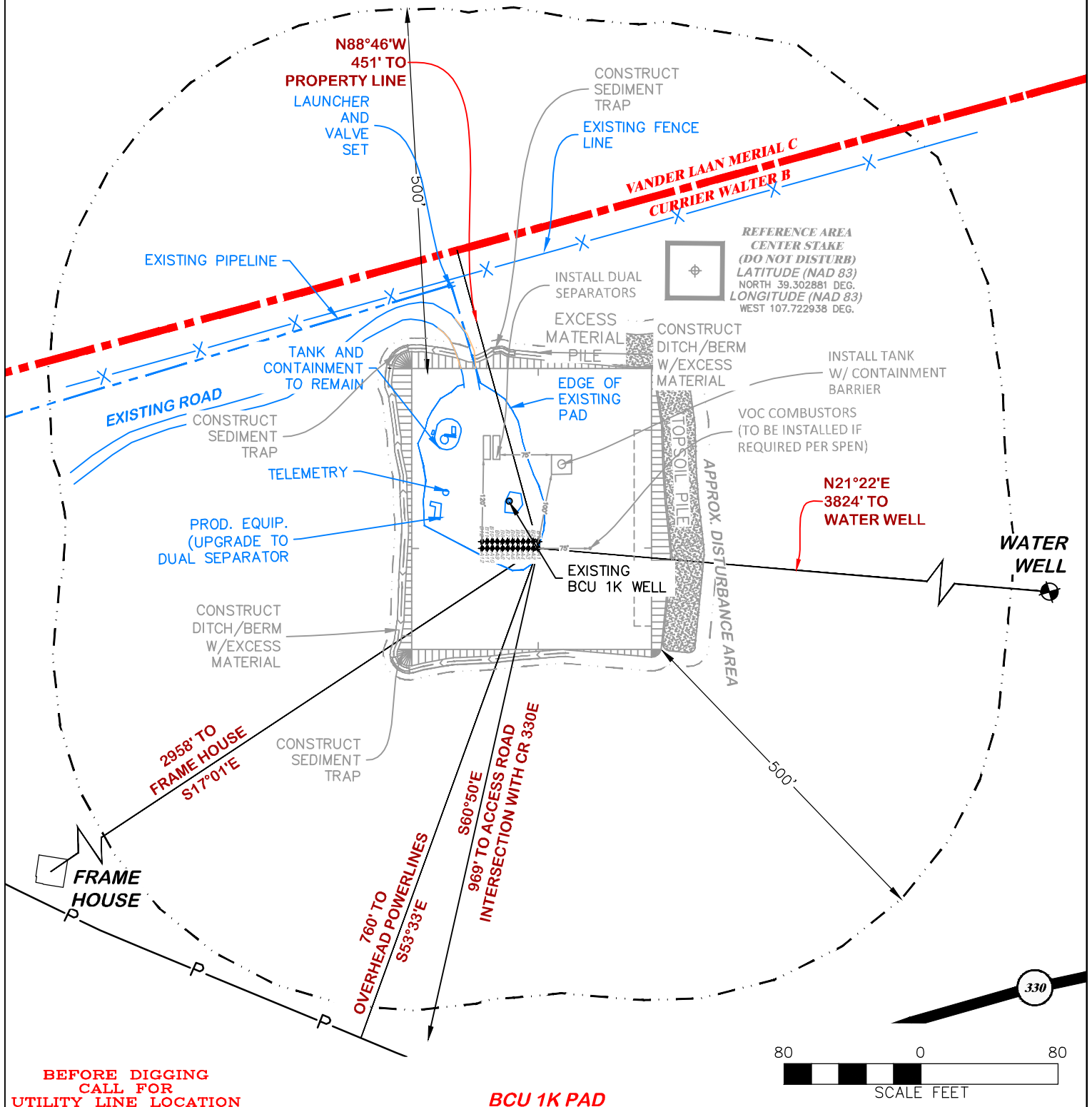
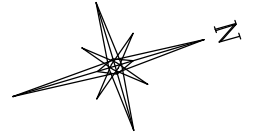


UNGRADED ELEVATION: 7715.9'
 FINAL ELEVATION: 7714.7'
 PROPOSED AREA OF DISTURBANCE: 5.2± ACRES
 DRAINS TO CHENEY CREEK

LOCATION DRAWING



RIFFIN & ASSOCIATES, INC.

(307) 362-5028

1414 ELK ST., ROCK SPRINGS, WY 82901

DRAWN: 2/24/2017 - DEH

SCALE: 1" = 80'

REVISED: 4/19/2017 - TCM

DRG JOB No. 21206

MISC. REVISIONS

LOC DWG

LOCATION DRAWING

LARAMIE ENERGY, LLC.

SCU 0993-01-07E

**NESW, SECTION 1, T. 9 S., R. 93 W., 6th P.M.,
 MESA COUNTY, COLORADO**