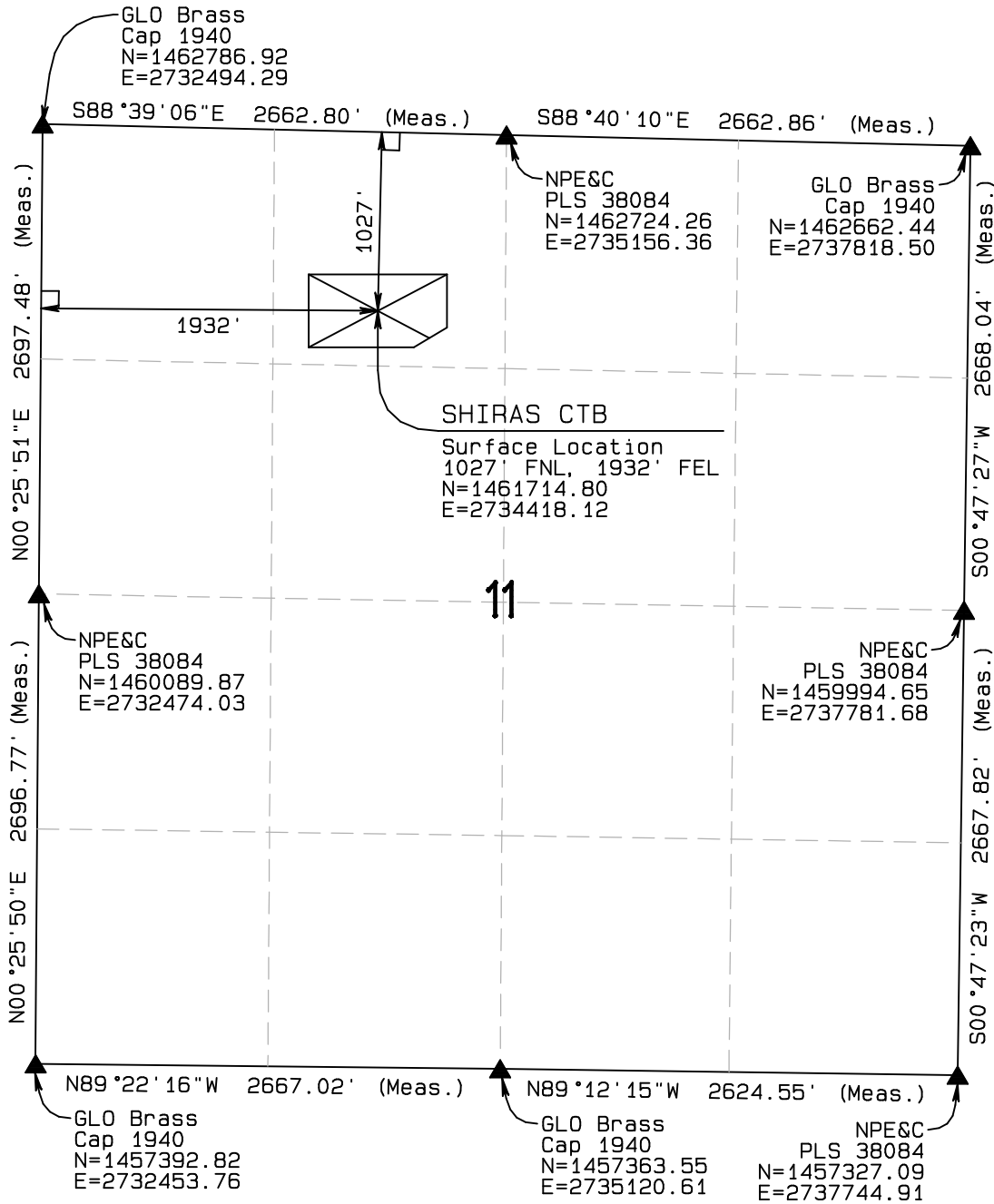


T7N R81W, 6TH PM

SandRidge Exploration & Production, LLC

Surface Location
 SHIRAS CTB
 NE1/4NW1/4 of Section 11, T7N,
 R81W, 6th P.M., Jackson County, Colorado.



BASIS OF BEARINGS:

US STATE PLANE 1983
 CO NORTH 0501 GRID

BASIS OF ELEVATION:

SPOT ELEVATION AT THE NW CORNER OF SECTION 10,
 T7N, R81W, 6TH PM, TAKEN FROM THE COALMONT
 QUADRANGLE, USGS 7.5 MIN QUAD (TOPOGRAPHIC MAP)
 WITH SAID ELEVATION MARKED AS BEING 8251 FEET.

LEGEND

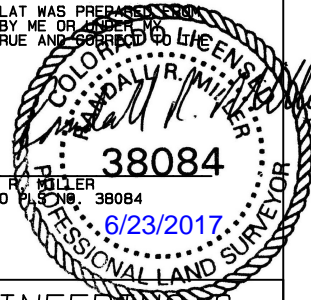
- 90° SYMBOL
- FOUND CORNER
- PROPOSED WELL
- PROPOSED BHL
- PROPOSED LPL
- PROPOSED TOF



GRAPHIC SCALE 1"=1000'



THIS IS TO CERTIFY THAT THE ABOVE PLAT WAS PREPARED FROM
 FIELD NOTES OF ACTUAL SURVEYS MADE BY ME OR UNDER MY
 SUPERVISION AND THAT THE SAME ARE TRUE AND CORRECT TO THE
 BEST OF MY KNOWLEDGE AND BELIEF.



RANDALL R. MILLER
 COLORADO PLS No. 38084

NORTH PARK ENGINEERING & CONSULTING, INC.

P.O. BOX 395
 WALDEN, CO 80480
 (970) 723-3725

NAD 83	(PAD LOCATION)
LATITUDE=40.596874°N	PDOP = 1.503
LONGITUDE=106.456376°W	

DATE OF FIELD WORK: DEC 13, 2016	DRAWING COMPLETION: JUNE 23, 2017
SURVEYED BY: LRK	DRAWN BY: TKH
	CHECKED BY: RRM