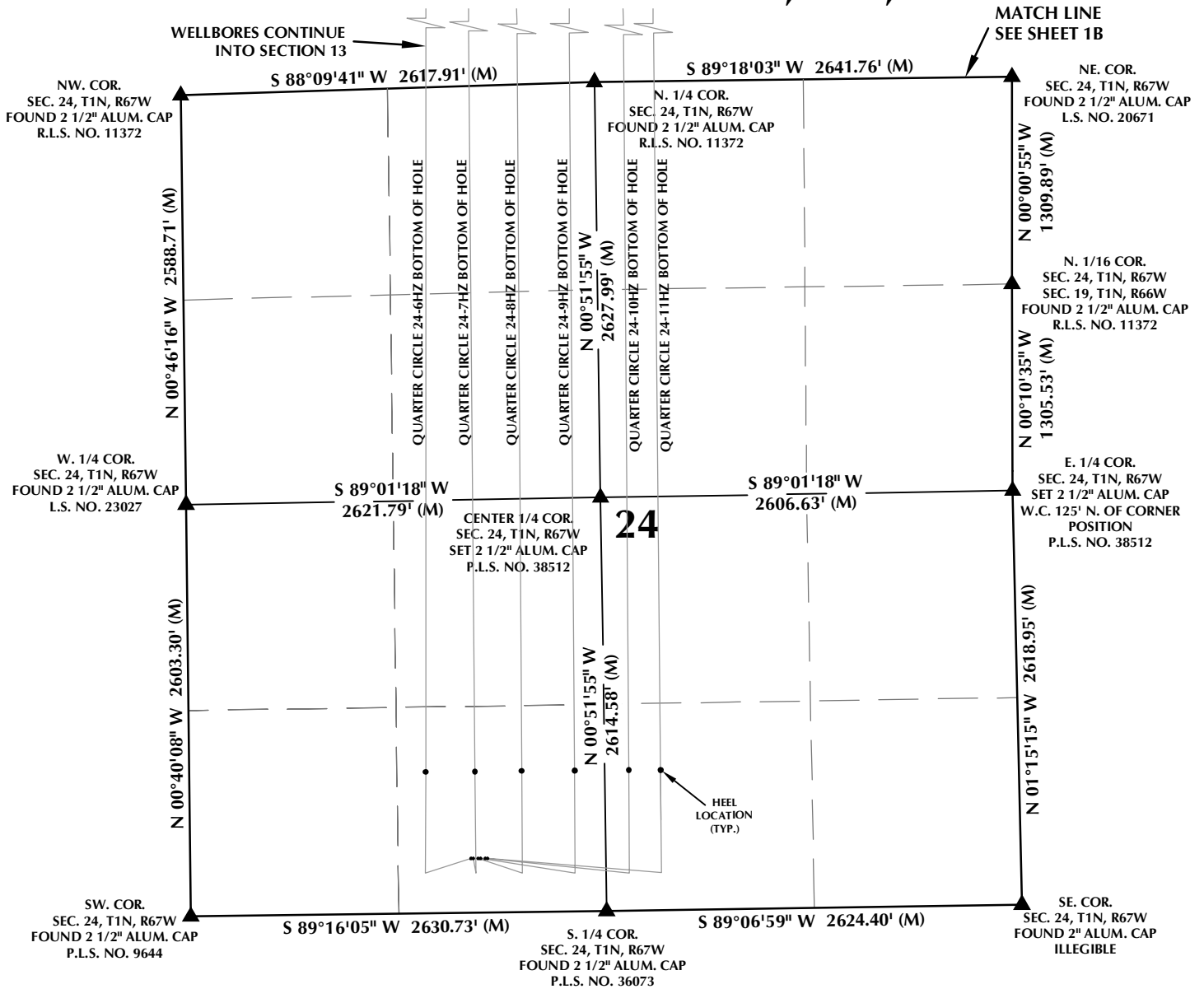


# MULTI-WELL PLAN SECTION 24, T1N, R67W



## WELL NOTES:

### QUARTER CIRCLE 24-6HZ

SURFACE: 344' FSL, 1774' FWL (SEC. 24)  
BOTTOM HOLE: 50' FNL, 1607' FWL (SEC. 13)

### QUARTER CIRCLE 24-7HZ

SURFACE: 344' FSL, 1789' FWL (SEC. 24)  
BOTTOM HOLE: 51' FNL, 1837' FWL (SEC. 13)

### QUARTER CIRCLE 24-8HZ

SURFACE: 344' FSL, 1819' FWL (SEC. 24)  
BOTTOM HOLE: 50' FNL, 2151' FWL (SEC. 13)

### QUARTER CIRCLE 24-9HZ

SURFACE: 343' FSL, 1834' FWL (SEC. 24)  
BOTTOM HOLE: 51' FNL, 2477' FWL (SEC. 13)

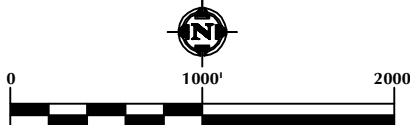
### QUARTER CIRCLE 24-10HZ

SURFACE: 343' FSL, 1864' FWL (SEC. 24)  
BOTTOM HOLE: 51' FNL, 2433' FWL (SEC. 13)

### QUARTER CIRCLE 24-11HZ

SURFACE: 343' FSL, 1879' FWL (SEC. 24)  
BOTTOM HOLE: 50' FNL, 2254' FWL (SEC. 13)

GRID



SCALE: 1" = 1000'

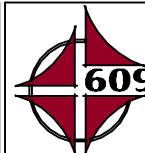
## NOTES:

- ▲ INDICATES SECTION CORNER
  - INDICATES CALCULATED CORNER
  - BASIS OF BEARING DERIVED FROM COLORADO COORDINATE SYSTEM OF 1983 NORTH ZONE.
  - ALL MEASURED DISTANCES ARE GRID.
- COMBINED SCALE FACTOR: .99973172 CALCULATED FROM THE SE. CORNER OF SECTION 24, T1N, R67W
- WELL FOOTAGES ARE MEASURED AT RIGHT ANGLES TO THE SECTION LINES.

## WELL PAD - QUARTER CIRCLE 24-8HZ

MULTI-WELL PLAN  
QUARTER CIRCLE 24-6HZ, QUARTER CIRCLE 24-7HZ,  
QUARTER CIRCLE 24-8HZ, QUARTER CIRCLE 24-9HZ,  
QUARTER CIRCLE 24-10HZ & QUARTER CIRCLE 24-11HZ  
LOCATED IN SECTIONS 13 & 24  
T1N, R67W, 6TH P.M.  
WELD COUNTY, COLORADO

**Kerr-McGee Oil &  
Gas Onshore L.P.**  
1099 18th Street  
Denver, Colorado 80202



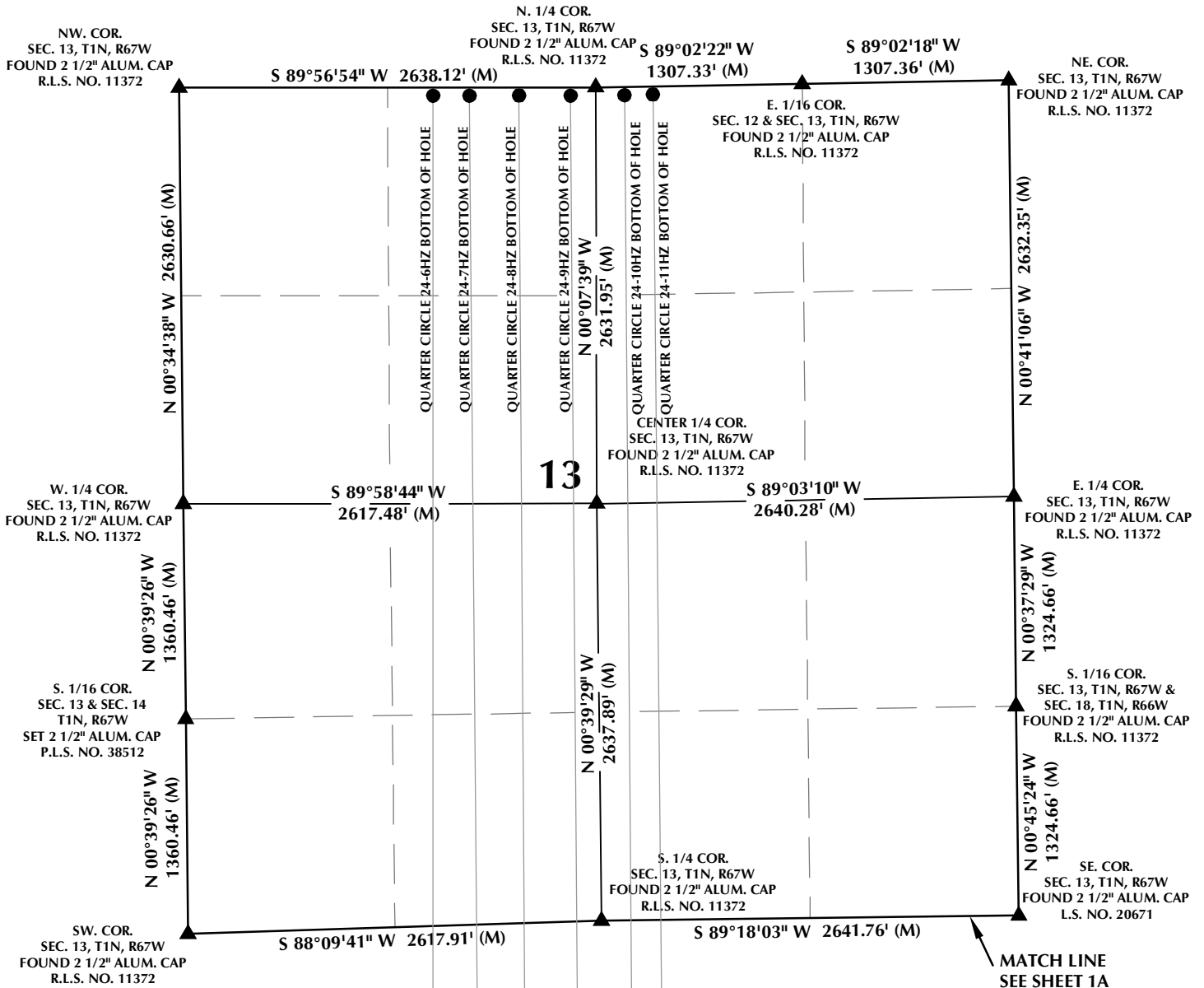
## CONSULTING, LLC

SHERIDAN OFFICE  
1095 Saberton Avenue  
Sheridan, Wyoming 82801  
Phone 307-674-0609

LOVELAND OFFICE  
1635 Foxtrail Drive, Suite 204  
Loveland, Colorado 80538  
Phone 970-776-4331

DRAFTED BY:	LMO	CHECKED BY:	RKF	SHEET NO:
DATE DRAFTED:	4/18/17	DATE SURVEYED:	12/8/16	1A
REVISED:		FILE NAME:	14-102	1A OF 1

# MULTI-WELL PLAN SECTION 13, T1N, R67W

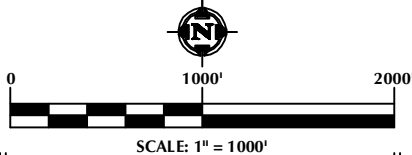


## WELL NOTES:

QUARTER CIRCLE 24-6HZ  
 SURFACE: 344' FSL, 1774' FWL (SEC. 24)  
 BOTTOM HOLE: 50' FNL, 1607' FWL (SEC. 13)  
 QUARTER CIRCLE 24-7HZ  
 SURFACE: 344' FSL, 1789' FWL (SEC. 24)  
 BOTTOM HOLE: 51' FNL, 1837' FWL (SEC. 13)  
 QUARTER CIRCLE 24-8HZ  
 SURFACE: 344' FSL, 1819' FWL (SEC. 24)  
 BOTTOM HOLE: 50' FNL, 2151' FWL (SEC. 13)  
 QUARTER CIRCLE 24-9HZ  
 SURFACE: 343' FSL, 1834' FWL (SEC. 24)  
 BOTTOM HOLE: 51' FNL, 2477' FWL (SEC. 13)  
 QUARTER CIRCLE 24-10HZ  
 SURFACE: 343' FSL, 1864' FWL (SEC. 24)  
 BOTTOM HOLE: 51' FNL, 2433' FEL (SEC. 13)  
 QUARTER CIRCLE 24-11HZ  
 SURFACE: 343' FSL, 1879' FWL (SEC. 24)  
 BOTTOM HOLE: 50' FNL, 2254' FEL (SEC. 13)

## NOTES:

- ▲ INDICATES SECTION CORNER
  - INDICATES CALCULATED CORNER
  - BASIS OF BEARING DERIVED FROM COLORADO COORDINATE SYSTEM OF 1983 NORTH ZONE.
  - ALL MEASURED DISTANCES ARE GRID.
- COMBINED SCALE FACTOR: .99973172 CALCULATED FROM THE SE. CORNER OF SECTION 24, T1N, R67W  
 WELL FOOTAGES ARE MEASURED AT RIGHT ANGLES TO THE SECTION LINES.



## WELL PAD - QUARTER CIRCLE 24-8HZ

MULTI-WELL PLAN  
 QUARTER CIRCLE 24-6HZ, QUARTER CIRCLE 24-7HZ,  
 QUARTER CIRCLE 24-8HZ, QUARTER CIRCLE 24-9HZ,  
 QUARTER CIRCLE 24-10HZ & QUARTER CIRCLE 24-11HZ  
 LOCATED IN SECTIONS 13 & 24  
 T1N, R67W, 6TH P.M.  
 WELD COUNTY, COLORADO

**Kerr-McGee Oil &  
 Gas Onshore L.P.**  
 1099 18th Street  
 Denver, Colorado 80202



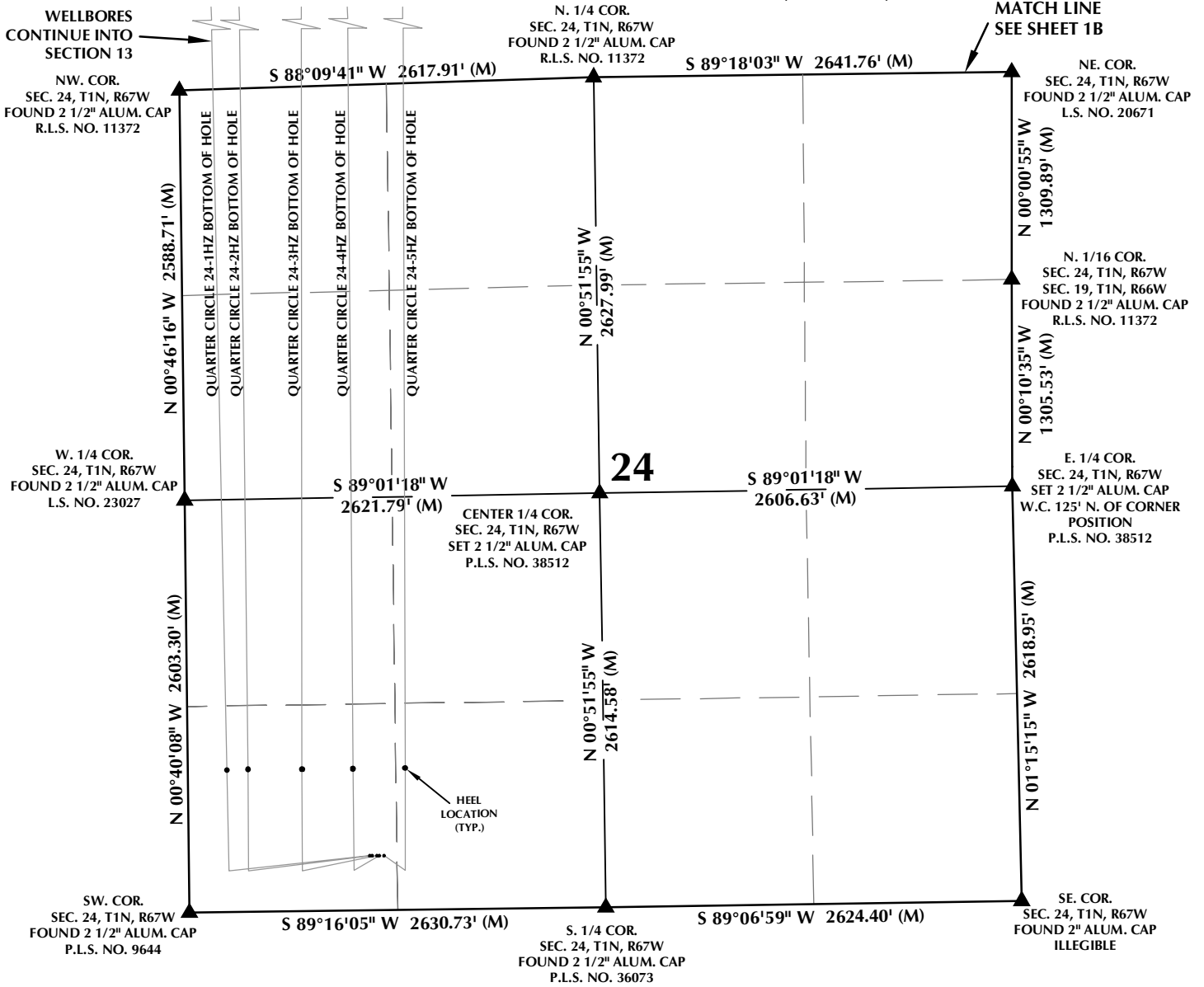
## CONSULTING, LLC

SHERIDAN OFFICE  
 1095 Saberton Avenue  
 Sheridan, Wyoming 82801  
 Phone 307-674-0609

LOVELAND OFFICE  
 1635 Foxtrail Drive, Suite 204  
 Loveland, Colorado 80538  
 Phone 970-776-4331

DRAFTED BY:	LMO	CHECKED BY:	RKF	SHEET NO:
DATE DRAFTED:	4/18/17	DATE SURVEYED:	12/8/16	<b>1B</b>
REVISED:		FILE NAME:	14-102	1B OF 1

# MULTI-WELL PLAN SECTION 24, T1N, R67W

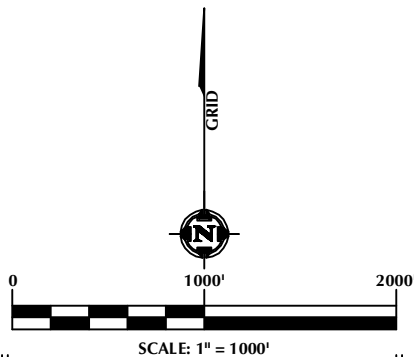


## WELL NOTES:

- QUARTER CIRCLE 24-1HZ**  
SURFACE: 344' FSL, 1141' FWL (SEC. 24)  
BOTTOM HOLE: 49' FNL, 159' FWL (SEC. 13)
- QUARTER CIRCLE 24-2HZ**  
SURFACE: 344' FSL, 1156' FWL (SEC. 24)  
BOTTOM HOLE: 49' FNL, 379' FWL (SEC. 13)
- QUARTER CIRCLE 24-3HZ**  
SURFACE: 344' FSL, 1186' FWL (SEC. 24)  
BOTTOM HOLE: 49' FNL, 820' FWL (SEC. 13)
- QUARTER CIRCLE 24-4HZ**  
SURFACE: 344' FSL, 1201' FWL (SEC. 24)  
BOTTOM HOLE: 51' FNL, 1084' FWL (SEC. 13)
- QUARTER CIRCLE 24-5HZ**  
SURFACE: 343' FSL, 1231' FWL (SEC. 24)  
BOTTOM HOLE: 50' FNL, 1454' FWL (SEC. 13)

## NOTES:

- ▲ INDICATES SECTION CORNER
  - INDICATES CALCULATED CORNER
  - BASIS OF BEARING DERIVED FROM COLORADO COORDINATE SYSTEM OF 1983 NORTH ZONE.
  - ALL MEASURED DISTANCES ARE GRID.
- COMBINED SCALE FACTOR: .99973172 CALCULATED FROM THE SE. CORNER OF SECTION 24, T1N, R67W
- WELL FOOTAGES ARE MEASURED AT RIGHT ANGLES TO THE SECTION LINES.



## WELL PAD - QUARTER CIRCLE 24-3HZ

**MULTI-WELL PLAN**  
QUARTER CIRCLE 24-1HZ,  
QUARTER CIRCLE 24-2HZ, QUARTER CIRCLE 24-3HZ,  
QUARTER CIRCLE 24-4HZ & QUARTER CIRCLE 24-5HZ  
LOCATED IN SECTIONS 13 & 24  
T1N, R67W, 6TH P.M.  
WELD COUNTY, COLORADO

**Kerr-McGee Oil &  
Gas Onshore L.P.**  
1099 18th Street  
Denver, Colorado 80202



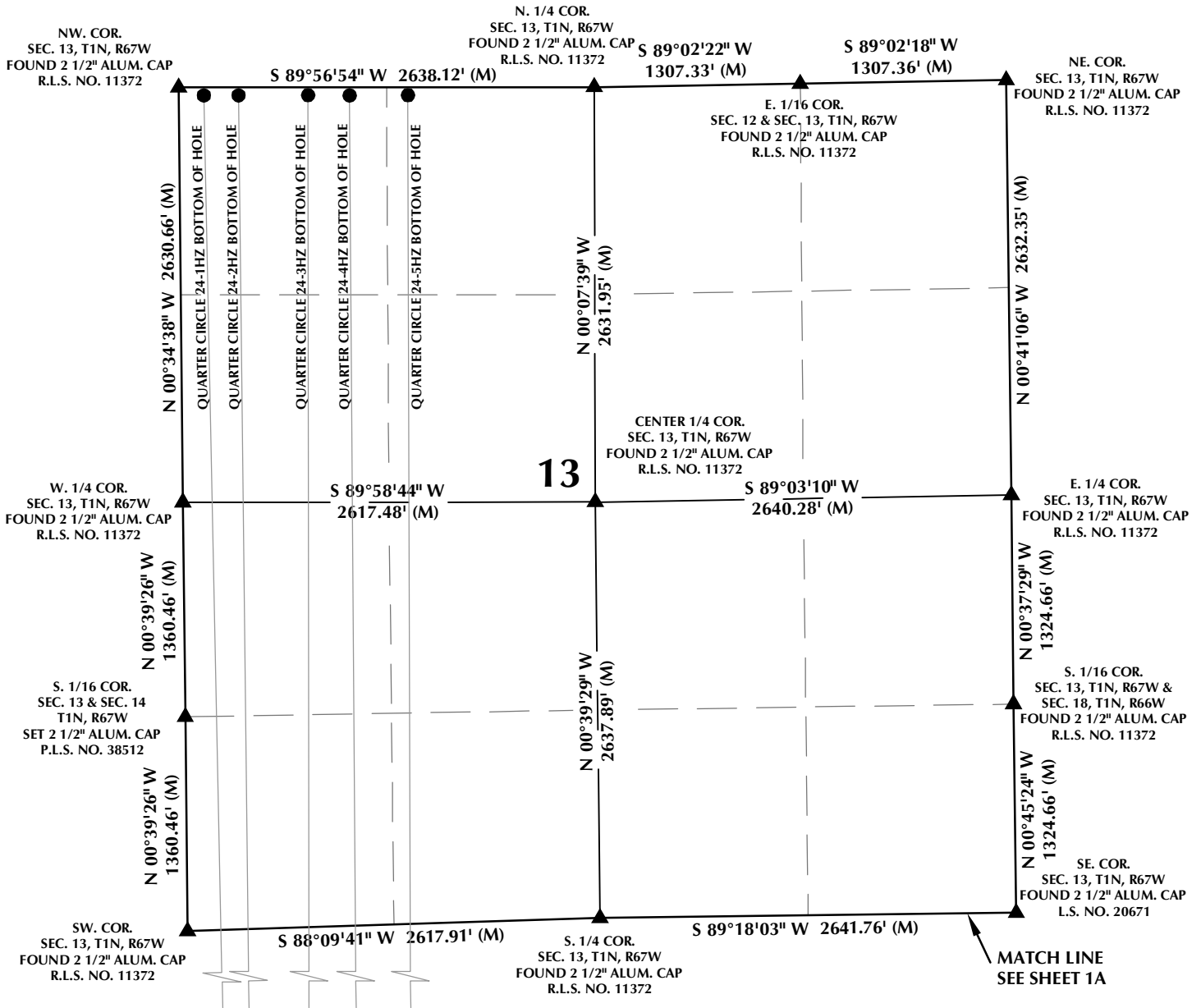
## CONSULTING, LLC

**SHERIDAN OFFICE**  
1095 Saberton Avenue  
Sheridan, Wyoming 82801  
Phone 307-674-0609

**LOVELAND OFFICE**  
1635 Foxtrail Drive, Suite 204  
Loveland, Colorado 80538  
Phone 970-776-4331

DRAFTED BY:	LMO	CHECKED BY:	RKF	SHEET NO:
DATE DRAFTED:	3/28/17	DATE SURVEYED:	12/8/16	<b>1A</b>
REVISED:		FILE NAME:	14-102	1A OF 1

# MULTI-WELL PLAN SECTION 13, T1N, R67W



## WELL NOTES:

**QUARTER CIRCLE 24-1HZ**  
SURFACE: 344' FSL, 1141' FWL (SEC. 24)  
BOTTOM HOLE: 49' FNL, 159' FWL (SEC. 13)

**QUARTER CIRCLE 24-2HZ**  
SURFACE: 344' FSL, 1156' FWL (SEC. 24)  
BOTTOM HOLE: 49' FNL, 379' FWL (SEC. 13)

**QUARTER CIRCLE 24-3HZ**  
SURFACE: 344' FSL, 1186' FWL (SEC. 24)  
BOTTOM HOLE: 49' FNL, 820' FWL (SEC. 13)

**QUARTER CIRCLE 24-4HZ**  
SURFACE: 344' FSL, 1201' FWL (SEC. 24)  
BOTTOM HOLE: 51' FNL, 1084' FWL (SEC. 13)

**QUARTER CIRCLE 24-5HZ**  
SURFACE: 343' FSL, 1231' FWL (SEC. 24)  
BOTTOM HOLE: 50' FNL, 1454' FWL (SEC. 13)

## NOTES:

- ▲ INDICATES SECTION CORNER
- INDICATES CALCULATED CORNER
- BASIS OF BEARING DERIVED FROM COLORADO COORDINATE SYSTEM OF 1983 NORTH ZONE.
- ALL MEASURED DISTANCES ARE GRID.
- COMBINED SCALE FACTOR: .99973172 CALCULATED FROM THE SE. CORNER OF SECTION 24, T1N, R67W. WELL FOOTAGES ARE MEASURED AT RIGHT ANGLES TO THE SECTION LINES.

## WELL PAD - QUARTER CIRCLE 24-3HZ

MULTI-WELL PLAN  
QUARTER CIRCLE 24-1HZ,  
QUARTER CIRCLE 24-2HZ, QUARTER CIRCLE 24-3HZ,  
QUARTER CIRCLE 24-4HZ & QUARTER CIRCLE 24-5HZ  
LOCATED IN SECTIONS 13 & 24  
T1N, R67W, 6TH P.M.  
WELD COUNTY, COLORADO

**Kerr-McGee Oil &  
Gas Onshore L.P.**  
1099 18th Street  
Denver, Colorado 80202



## CONSULTING, LLC

**SHERIDAN OFFICE**  
1095 Saberton Avenue  
Sheridan, Wyoming 82801  
Phone 307-674-0609

**LOVELAND OFFICE**  
1635 Foxtrail Drive, Suite 204  
Loveland, Colorado 80538  
Phone 970-776-4331

DRAFTED BY:	LMO	CHECKED BY:	RKF	SHEET NO:
DATE DRAFTED:	3/28/17	DATE SURVEYED:	12/8/16	<b>1B</b>
REVISED:		FILE NAME:	14-102	1B OF 1