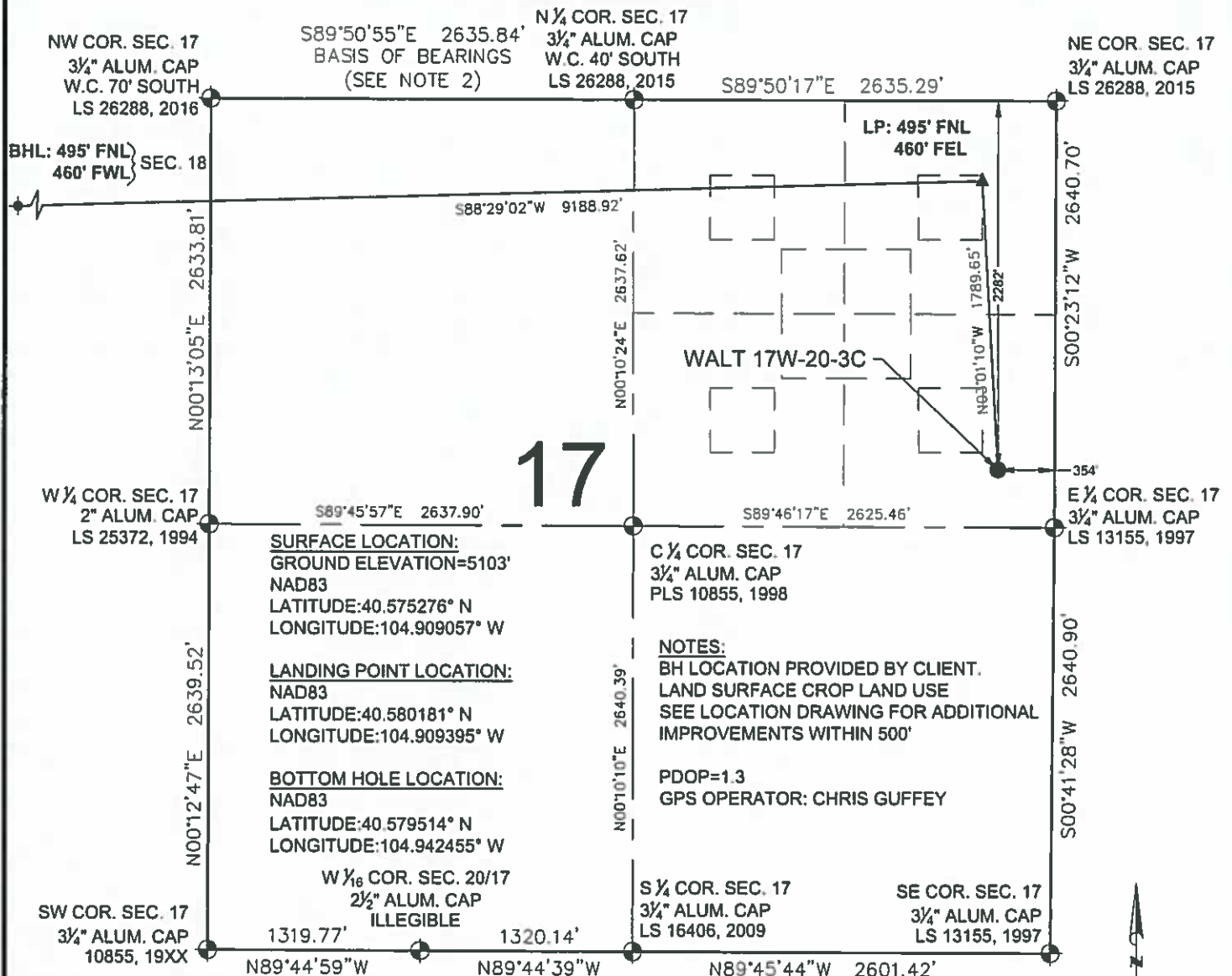
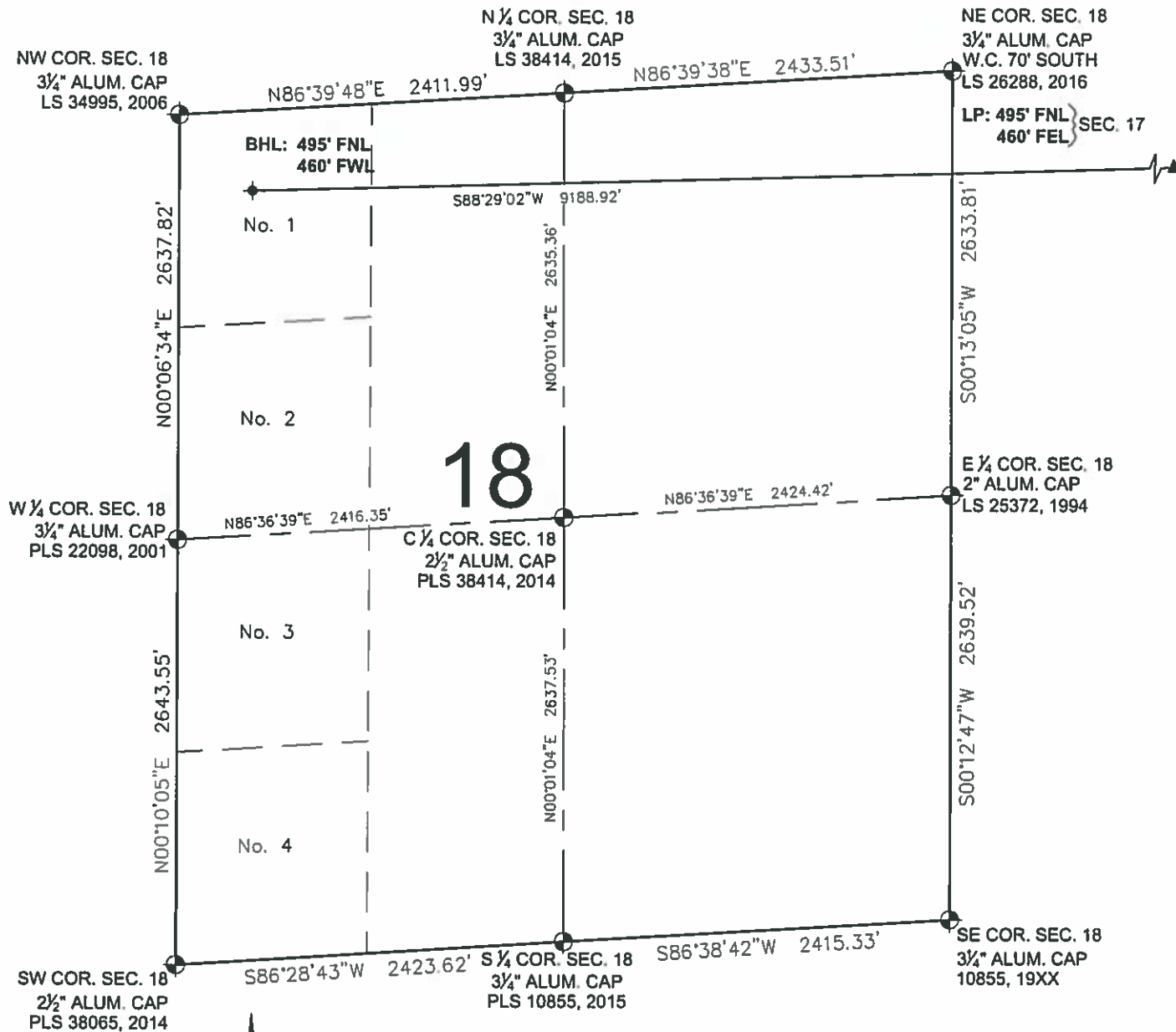


WALT 17W-20-3C WELL LOCATION CERTIFICATE



WALT 17W-20-3C WELL LOCATION CERTIFICATE



LEGEND

- ⊕ = EXISTING MONUMENT
- = CALCULATED POSITION
- = PROPOSED WELL
- ◆ = EXISTING WELL
- ⬮ = BOTTOM HOLE
- ▲ = LANDING POINT
- LP = LANDING POINT
- BHL = BOTTOM HOLE LOCATION

MICHAEL L. POOL, PLS 38304
COLORADO LICENSED PROFESSIONAL LAND SURVEYOR
FOR AND ON BEHALF OF P.F.S., LLC



SHEET 2 OF 2



FIELD DATE

05-17-17

DRAWING DATE

05-22-17

BY

IJM

CHECKED

WDW

WELL NAME

WALT 17W-20-3C

SURFACE LOCATION

SE 1/4 NE 1/4 SEC. 17, T7N, R67W, 6TH P.M.
WELD COUNTY, COLORADO

PREPARED FOR

