

EXTRACTION OIL & GAS

**Weld County
Sec 17-T7N-R67W
WALT 17W-20-3C**

ORIGINAL WELLBORE

Plan: PROPOSAL 1

Standard Planning Report

31 May, 2017



WELL DETAILS: WALT 17W-20-3C

+N/-S	+E/-W	Northing	Easting	5080.0	Latitude	Longitude	Slot
0.0	0.0	1452961.19	3164157.00	40° 34' 30.993 N	104° 54' 32.605 W		

SECTION DETAILS

Sec	MD	Inc	Azi	TVD	+N/-S	+E/-W	Dleg	TFace	VSec	Target
1	0.0	0.00	0.00	0.0	0.0	0.0	0.00	0.00	0.0	
2	1550.0	0.00	0.00	1550.0	0.0	0.0	0.00	0.00	0.0	
3	3105.0	31.10	14.91	3029.8	397.9	105.9	2.00	14.91	-39.1	
4	5116.5	31.10	14.91	4752.1	1402.0	373.2	0.00	0.00	-137.7	
5	6671.5	0.00	0.00	6231.9	1799.9	479.1	2.00	180.00	-176.8	
6	6771.5	0.00	0.00	6331.9	1799.9	479.1	0.00	0.00	-176.8	
7	7671.8	90.00	268.71	6905.0	1787.0	-93.9	10.00	268.71	386.3	WALT
8	16858.1	90.00	268.28	6905.0	1545.7	-9277.1	0.00	-90.88	9404.9	WALT

ANNOTATIONS

MD	Inc	Azi	TVD	+N/-S	+E/-W	VSec	Departure	Annotation
1550.0	0.00	0.00	1550.0	0.0	0.0	0.0	0.0	BUILD 2°/100'
3105.0	31.10	14.91	3029.8	397.9	105.9	-39.1	411.8	HOLD 31.10° INC
5116.5	31.10	14.91	4752.1	1402.0	373.2	-137.7	1450.8	DROP 2°/100'
6671.5	0.00	0.00	6231.9	1799.9	479.1	-176.8	1862.6	HOLD VERTICAL
6771.5	0.00	0.00	6331.9	1799.9	479.1	-176.8	1862.6	KOP, BUILD 10°/100'
7671.8	90.00	268.71	6905.0	1787.0	-93.9	386.3	2435.7	LP @ 90° INC
16858.1	90.00	268.28	6905.0	1545.7	-9277.1	9404.9	11622.1	TD at 16858.1' MD

DESIGN TARGET DETAILS

Name	TVD	+N/-S	+E/-W	Northing	Easting	Latitude	Longitude	Shape
WALT 17W-20-3C-LP	6905.0	1787.0	-93.9	1454747.49	3164051.21	40° 34' 48.652 N	104° 54' 33.822 W	Point
WALT 17W-20-3C-PBHL	6905.0	1545.7	-9277.1	1454445.05	3154869.85	40° 34' 46.250 N	104° 56' 32.838 W	Point

- plan hits target center

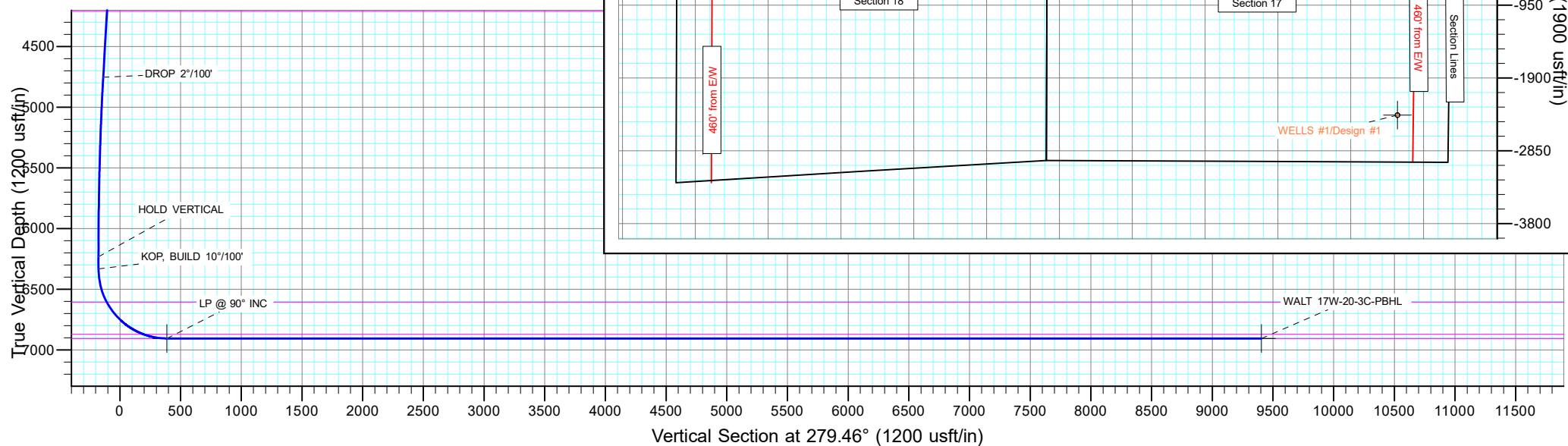
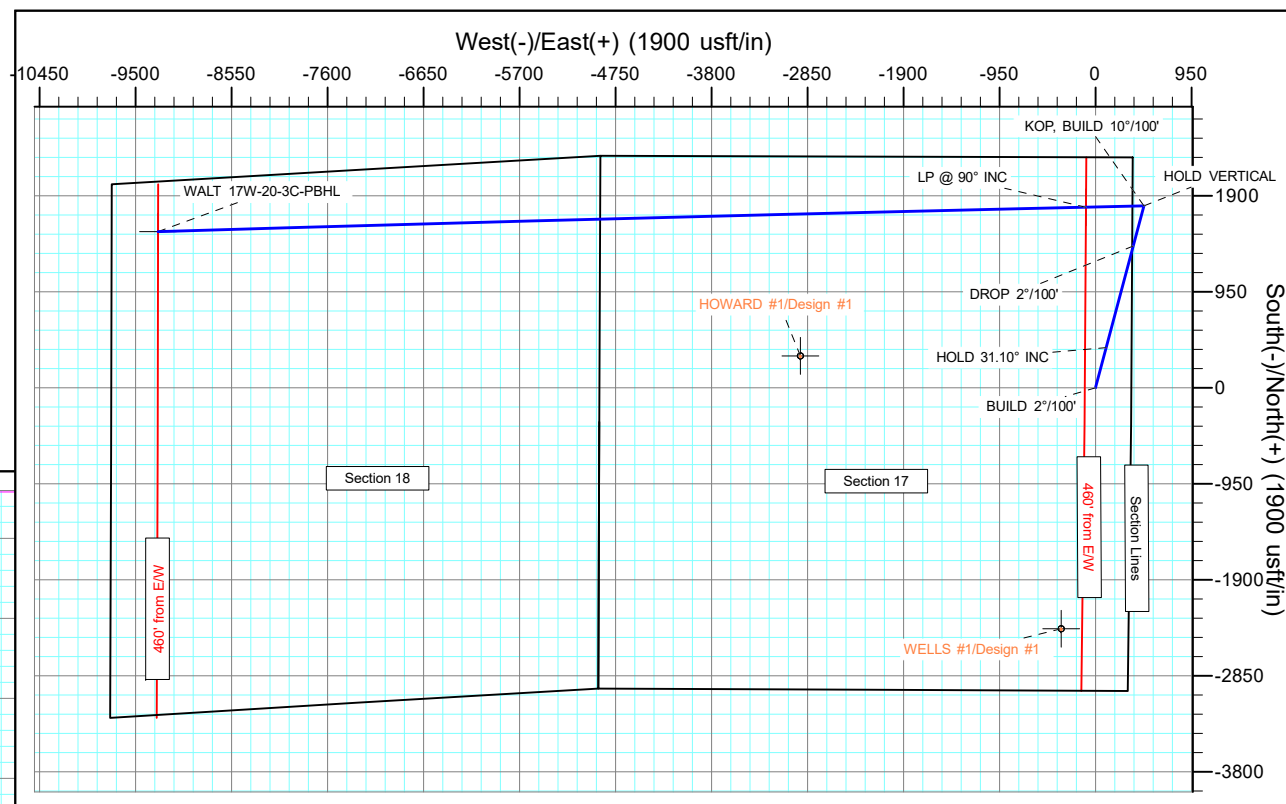
FORMATION TOP DETAILS

TVDPATH	MDPATH	FORMATION
3835.0	4045.4	SUSSEX
4210.0	4483.4	SHANNON
6605.0	7056.2	NIORARA
6870.0	7470.4	FORT HAYS
6905.0	7671.8	CODELL

PROJECT DETAILS: Weld County

Geodetic System: US State Plane 1983
Datum: North American Datum 1983
Ellipsoid: GRS 1980
Zone: Colorado Northern Zone
System Datum: Mean Sea Level

SHL:
2282' FNL, 354' FEL
Sec 17-T7N-R67W
LP:
495' FNL, 460' FEL
Sec 17-T7N-R67W
BHL:
495' FNL, 460' FWL
Sec 18-T7N-R67W



Planning Report

Database:	EDT_32Bit_ODBC	Local Co-ordinate Reference:	Well WALT 17W-20-3C
Company:	EXTRACTION OIL & GAS	TVD Reference:	KB 25' @ 5105.0usft
Project:	Weld County	MD Reference:	KB 25' @ 5105.0usft
Site:	Sec 17-T7N-R67W	North Reference:	True
Well:	WALT 17W-20-3C	Survey Calculation Method:	Minimum Curvature
Wellbore:	ORIGINAL WELLBORE		
Design:	PROPOSAL 1		

Project	Weld County		
Map System:	US State Plane 1983	System Datum:	Mean Sea Level
Geo Datum:	North American Datum 1983		
Map Zone:	Colorado Northern Zone		

Site		Sec 17-T7N-R67W			
Site Position:		Northing:	1,455,244.22 usft	Latitude:	40° 34' 53.530 N
From:	Lat/Long	Easting:	3,164,511.50 usft	Longitude:	104° 54' 27.814 W
Position Uncertainty:	0.0 usft	Slot Radius:	13.200 in	Grid Convergence:	0.38 °

Well	WALT 17W-20-3C					
Well Position	+N/-S	-2,280.6 usft	Northing:	1,452,961.20 usft	Latitude:	40° 34' 30.993 N
	+E/-W	-369.7 usft	Easting:	3,164,157.00 usft	Longitude:	104° 54' 32.605 W
Position Uncertainty		0.0 usft	Wellhead Elevation:		Ground Level:	5,080.0 usft

Wellbore	ORIGINAL WELLBORE				
Magnetics	Model Name	Sample Date	Declination (°)	Dip Angle (°)	Field Strength (nT)
	IGRF2015	5/15/2017	8.31	66.97	52,476.10035701

Design	PROPOSAL 1			
Audit Notes:				
Version:	Phase:	PROTOTYPE	Tie On Depth:	0.0
Vertical Section:	Depth From (TVD) (usft)	+N/-S (usft)	+E/-W (usft)	Direction (°)
	0.0	0.0	0.0	279.46

Plan Survey Tool Program			Date	5/31/2017	
Depth From (usft)	Depth To (usft)	Survey (Wellbore)	Tool Name	Remarks	
1	0.0	16,857.7	PROPOSAL 1 (ORIGINAL WELL	MWD OWSG	
			OWSG MWD - Standard		

Plan Sections										
Measured Depth (usft)	Inclination (°)	Azimuth (°)	Vertical Depth (usft)	+N/-S (usft)	+E/-W (usft)	Dogleg Rate (°/100ft)	Build Rate (°/100ft)	Turn Rate (°/100ft)	TFO (°)	Target
0.0	0.00	0.00	0.0	0.0	0.0	0.00	0.00	0.00	0.00	
1,550.0	0.00	0.00	1,550.0	0.0	0.0	0.00	0.00	0.00	0.00	
3,105.0	31.10	14.91	3,029.8	397.9	105.9	2.00	2.00	0.00	14.91	
5,116.5	31.10	14.91	4,752.1	1,402.0	373.2	0.00	0.00	0.00	0.00	
6,671.5	0.00	0.00	6,231.9	1,799.9	479.1	2.00	-2.00	0.00	180.00	
6,771.5	0.00	0.00	6,331.9	1,799.9	479.1	0.00	0.00	0.00	0.00	
7,671.8	90.00	268.71	6,905.0	1,787.0	-93.9	10.00	10.00	-10.14	268.71	WALT 17W-20-3C-LP
16,858.1	90.00	268.28	6,905.0	1,545.7	-9,277.1	0.00	0.00	0.00	-90.88	WALT 17W-20-3C-PB

Planning Report

Database:	EDT_32Bit_ODBC	Local Co-ordinate Reference:	Well WALT 17W-20-3C
Company:	EXTRACTION OIL & GAS	TVD Reference:	KB 25' @ 5105.0usft
Project:	Weld County	MD Reference:	KB 25' @ 5105.0usft
Site:	Sec 17-T7N-R67W	North Reference:	True
Well:	WALT 17W-20-3C	Survey Calculation Method:	Minimum Curvature
Wellbore:	ORIGINAL WELLBORE		
Design:	PROPOSAL 1		

Planned Survey									
Measured Depth (usft)	Inclination (°)	Azimuth (°)	Vertical Depth (usft)	+N/-S (usft)	+E/-W (usft)	Vertical Section (usft)	Dogleg Rate (°/100ft)	Build Rate (°/100ft)	Turn Rate (°/100ft)
0.0	0.00	0.00	0.0	0.0	0.0	0.0	0.00	0.00	0.00
100.0	0.00	0.00	100.0	0.0	0.0	0.0	0.00	0.00	0.00
200.0	0.00	0.00	200.0	0.0	0.0	0.0	0.00	0.00	0.00
300.0	0.00	0.00	300.0	0.0	0.0	0.0	0.00	0.00	0.00
400.0	0.00	0.00	400.0	0.0	0.0	0.0	0.00	0.00	0.00
500.0	0.00	0.00	500.0	0.0	0.0	0.0	0.00	0.00	0.00
600.0	0.00	0.00	600.0	0.0	0.0	0.0	0.00	0.00	0.00
700.0	0.00	0.00	700.0	0.0	0.0	0.0	0.00	0.00	0.00
800.0	0.00	0.00	800.0	0.0	0.0	0.0	0.00	0.00	0.00
900.0	0.00	0.00	900.0	0.0	0.0	0.0	0.00	0.00	0.00
1,000.0	0.00	0.00	1,000.0	0.0	0.0	0.0	0.00	0.00	0.00
1,100.0	0.00	0.00	1,100.0	0.0	0.0	0.0	0.00	0.00	0.00
1,200.0	0.00	0.00	1,200.0	0.0	0.0	0.0	0.00	0.00	0.00
1,300.0	0.00	0.00	1,300.0	0.0	0.0	0.0	0.00	0.00	0.00
1,400.0	0.00	0.00	1,400.0	0.0	0.0	0.0	0.00	0.00	0.00
1,500.0	0.00	0.00	1,500.0	0.0	0.0	0.0	0.00	0.00	0.00
1,550.0	0.00	0.00	1,550.0	0.0	0.0	0.0	0.00	0.00	0.00
BUILD 2°/100'									
1,600.0	1.00	14.91	1,600.0	0.4	0.1	0.0	2.00	2.00	0.00
1,700.0	3.00	14.91	1,699.9	3.8	1.0	-0.4	2.00	2.00	0.00
1,800.0	5.00	14.91	1,799.7	10.5	2.8	-1.0	2.00	2.00	0.00
1,900.0	7.00	14.91	1,899.1	20.6	5.5	-2.0	2.00	2.00	0.00
2,000.0	9.00	14.91	1,998.2	34.1	9.1	-3.3	2.00	2.00	0.00
2,100.0	11.00	14.91	2,096.6	50.9	13.5	-5.0	2.00	2.00	0.00
2,200.0	13.00	14.91	2,194.4	71.0	18.9	-7.0	2.00	2.00	0.00
2,300.0	15.00	14.91	2,291.5	94.3	25.1	-9.3	2.00	2.00	0.00
2,400.0	17.00	14.91	2,387.6	121.0	32.2	-11.9	2.00	2.00	0.00
2,500.0	19.00	14.91	2,482.7	150.8	40.1	-14.8	2.00	2.00	0.00
2,600.0	21.00	14.91	2,576.6	183.9	48.9	-18.1	2.00	2.00	0.00
2,700.0	23.00	14.91	2,669.4	220.1	58.6	-21.6	2.00	2.00	0.00
2,800.0	25.00	14.91	2,760.7	259.4	69.0	-25.5	2.00	2.00	0.00
2,900.0	27.00	14.91	2,850.6	301.7	80.3	-29.6	2.00	2.00	0.00
3,000.0	29.00	14.91	2,938.9	347.1	92.4	-34.1	2.00	2.00	0.00
3,105.0	31.10	14.91	3,029.8	397.9	105.9	-39.1	2.00	2.00	0.00
HOLD 31.10° INC									
3,200.0	31.10	14.91	3,111.1	445.3	118.5	-43.7	0.00	0.00	0.00
3,300.0	31.10	14.91	3,196.7	495.2	131.8	-48.6	0.00	0.00	0.00
3,400.0	31.10	14.91	3,282.4	545.2	145.1	-53.5	0.00	0.00	0.00
3,500.0	31.10	14.91	3,368.0	595.1	158.4	-58.4	0.00	0.00	0.00
3,600.0	31.10	14.91	3,453.6	645.0	171.7	-63.3	0.00	0.00	0.00
3,700.0	31.10	14.91	3,539.2	694.9	185.0	-68.2	0.00	0.00	0.00
3,800.0	31.10	14.91	3,624.9	744.8	198.3	-73.2	0.00	0.00	0.00
3,900.0	31.10	14.91	3,710.5	794.7	211.5	-78.1	0.00	0.00	0.00
4,000.0	31.10	14.91	3,796.1	844.7	224.8	-83.0	0.00	0.00	0.00
4,045.4	31.10	14.91	3,835.0	867.3	230.9	-85.2	0.00	0.00	0.00
SUSSEX									
4,100.0	31.10	14.91	3,881.7	894.6	238.1	-87.9	0.00	0.00	0.00
4,200.0	31.10	14.91	3,967.4	944.5	251.4	-92.8	0.00	0.00	0.00
4,300.0	31.10	14.91	4,053.0	994.4	264.7	-97.7	0.00	0.00	0.00
4,400.0	31.10	14.91	4,138.6	1,044.3	278.0	-102.6	0.00	0.00	0.00
4,483.4	31.10	14.91	4,210.0	1,085.9	289.1	-106.7	0.00	0.00	0.00
SHANNON									
4,500.0	31.10	14.91	4,224.2	1,094.2	291.3	-107.5	0.00	0.00	0.00

Planning Report

Database:	EDT_32Bit_ODBC	Local Co-ordinate Reference:	Well WALT 17W-20-3C
Company:	EXTRACTION OIL & GAS	TVD Reference:	KB 25' @ 5105.0usft
Project:	Weld County	MD Reference:	KB 25' @ 5105.0usft
Site:	Sec 17-T7N-R67W	North Reference:	True
Well:	WALT 17W-20-3C	Survey Calculation Method:	Minimum Curvature
Wellbore:	ORIGINAL WELLBORE		
Design:	PROPOSAL 1		

Planned Survey									
Measured Depth (usft)	Inclination (°)	Azimuth (°)	Vertical Depth (usft)	+N/-S (usft)	+E/-W (usft)	Vertical Section (usft)	Dogleg Rate (°/100ft)	Build Rate (°/100ft)	Turn Rate (°/100ft)
4,600.0	31.10	14.91	4,309.9	1,144.2	304.6	-112.4	0.00	0.00	0.00
4,700.0	31.10	14.91	4,395.5	1,194.1	317.8	-117.3	0.00	0.00	0.00
4,800.0	31.10	14.91	4,481.1	1,244.0	331.1	-122.2	0.00	0.00	0.00
4,900.0	31.10	14.91	4,566.7	1,293.9	344.4	-127.1	0.00	0.00	0.00
5,000.0	31.10	14.91	4,652.4	1,343.8	357.7	-132.0	0.00	0.00	0.00
5,100.0	31.10	14.91	4,738.0	1,393.7	371.0	-136.9	0.00	0.00	0.00
5,116.5	31.10	14.91	4,752.1	1,402.0	373.2	-137.7	0.00	0.00	0.00
DROP 2°/100'									
5,200.0	29.43	14.91	4,824.2	1,442.6	384.0	-141.7	2.00	-2.00	0.00
5,300.0	27.43	14.91	4,912.2	1,488.7	396.3	-146.2	2.00	-2.00	0.00
5,400.0	25.43	14.91	5,001.7	1,531.7	407.7	-150.4	2.00	-2.00	0.00
5,500.0	23.43	14.91	5,092.8	1,571.6	418.3	-154.4	2.00	-2.00	0.00
5,600.0	21.43	14.91	5,185.2	1,608.5	428.2	-158.0	2.00	-2.00	0.00
5,700.0	19.43	14.91	5,278.9	1,642.2	437.1	-161.3	2.00	-2.00	0.00
5,800.0	17.43	14.91	5,373.8	1,672.8	445.3	-164.3	2.00	-2.00	0.00
5,900.0	15.43	14.91	5,469.7	1,700.1	452.5	-167.0	2.00	-2.00	0.00
6,000.0	13.43	14.91	5,566.5	1,724.2	458.9	-169.3	2.00	-2.00	0.00
6,100.0	11.43	14.91	5,664.2	1,745.0	464.5	-171.4	2.00	-2.00	0.00
6,200.0	9.43	14.91	5,762.5	1,762.5	469.1	-173.1	2.00	-2.00	0.00
6,300.0	7.43	14.91	5,861.4	1,776.7	472.9	-174.5	2.00	-2.00	0.00
6,400.0	5.43	14.91	5,960.8	1,787.5	475.8	-175.5	2.00	-2.00	0.00
6,500.0	3.43	14.91	6,060.5	1,794.9	477.8	-176.3	2.00	-2.00	0.00
6,600.0	1.43	14.91	6,160.4	1,799.0	478.9	-176.7	2.00	-2.00	0.00
6,671.5	0.00	0.00	6,231.9	1,799.9	479.1	-176.8	2.00	-2.00	0.00
HOLD VERTICAL									
6,700.0	0.00	0.00	6,260.4	1,799.9	479.1	-176.8	0.00	0.00	0.00
6,771.5	0.00	0.00	6,331.9	1,799.9	479.1	-176.8	0.00	0.00	0.00
KOP, BUILD 10°/100'									
6,800.0	2.85	268.71	6,360.4	1,799.9	478.4	-176.1	10.00	10.00	0.00
6,850.0	7.85	268.71	6,410.1	1,799.8	473.7	-171.5	10.00	10.00	0.00
6,900.0	12.84	268.71	6,459.3	1,799.6	464.8	-162.7	10.00	10.00	0.00
6,950.0	17.84	268.71	6,507.5	1,799.3	451.5	-149.7	10.00	10.00	0.00
7,000.0	22.84	268.71	6,554.4	1,798.9	434.2	-132.6	10.00	10.00	0.00
7,050.0	27.84	268.71	6,599.6	1,798.4	412.8	-111.6	10.00	10.00	0.00
7,056.2	28.46	268.71	6,605.0	1,798.3	409.9	-108.7	10.00	10.00	0.00
NIOBRARA									
7,100.0	32.84	268.71	6,642.7	1,797.8	387.5	-86.8	10.00	10.00	0.00
7,150.0	37.84	268.71	6,683.5	1,797.2	358.6	-58.4	10.00	10.00	0.00
7,200.0	42.84	268.71	6,721.6	1,796.4	326.3	-26.6	10.00	10.00	0.00
7,250.0	47.84	268.71	6,756.7	1,795.6	290.7	8.3	10.00	10.00	0.00
7,300.0	52.83	268.71	6,788.6	1,794.8	252.3	46.1	10.00	10.00	0.00
7,350.0	57.83	268.71	6,817.0	1,793.9	211.2	86.5	10.00	10.00	0.00
7,400.0	62.83	268.71	6,841.8	1,792.9	167.8	129.2	10.00	10.00	0.00
7,450.0	67.83	268.71	6,862.6	1,791.8	122.3	173.8	10.00	10.00	0.00
7,470.4	69.87	268.71	6,870.0	1,791.4	103.3	192.5	10.00	10.00	0.00
FORT HAYS									
7,500.0	72.83	268.71	6,879.5	1,790.8	75.3	220.1	10.00	10.00	0.00
7,550.0	77.83	268.71	6,892.1	1,789.7	26.9	267.6	10.00	10.00	0.00
7,600.0	82.83	268.71	6,900.5	1,788.6	-22.3	316.0	10.00	10.00	0.00
7,650.0	87.83	268.71	6,904.6	1,787.5	-72.1	364.9	10.00	10.00	0.00
7,671.8	90.00	268.71	6,905.0	1,787.0	-93.9	386.3	10.00	10.00	0.00
LP @ 90° INC - CODELL									
7,700.0	90.00	268.71	6,905.0	1,786.3	-122.1	414.0	0.00	0.00	0.00

Planning Report

Database:	EDT_32Bit_ODBC	Local Co-ordinate Reference:	Well WALT 17W-20-3C
Company:	EXTRACTION OIL & GAS	TVD Reference:	KB 25' @ 5105.0usft
Project:	Weld County	MD Reference:	KB 25' @ 5105.0usft
Site:	Sec 17-T7N-R67W	North Reference:	True
Well:	WALT 17W-20-3C	Survey Calculation Method:	Minimum Curvature
Wellbore:	ORIGINAL WELLBORE		
Design:	PROPOSAL 1		

Planned Survey									
Measured Depth (usft)	Inclination (°)	Azimuth (°)	Vertical Depth (usft)	+N/-S (usft)	+E/-W (usft)	Vertical Section (usft)	Dogleg Rate (°/100ft)	Build Rate (°/100ft)	Turn Rate (°/100ft)
7,800.0	90.00	268.70	6,905.0	1,784.1	-222.1	512.3	0.00	0.00	0.00
7,900.0	90.00	268.70	6,905.0	1,781.8	-322.1	610.5	0.00	0.00	0.00
8,000.0	90.00	268.69	6,905.0	1,779.5	-422.0	708.8	0.00	0.00	0.00
8,100.0	90.00	268.69	6,905.0	1,777.2	-522.0	807.0	0.00	0.00	0.00
8,200.0	90.00	268.68	6,905.0	1,774.9	-622.0	905.2	0.00	0.00	0.00
8,300.0	90.00	268.68	6,905.0	1,772.6	-721.9	1,003.5	0.00	0.00	0.00
8,400.0	90.00	268.67	6,905.0	1,770.3	-821.9	1,101.7	0.00	0.00	0.00
8,500.0	90.00	268.67	6,905.0	1,768.0	-921.9	1,199.9	0.00	0.00	0.00
8,600.0	90.00	268.66	6,905.0	1,765.7	-1,021.9	1,298.2	0.00	0.00	0.00
8,700.0	90.00	268.66	6,904.9	1,763.3	-1,121.8	1,396.4	0.00	0.00	0.00
8,800.0	90.00	268.65	6,904.9	1,761.0	-1,221.8	1,494.6	0.00	0.00	0.00
8,900.0	90.00	268.65	6,904.9	1,758.6	-1,321.8	1,592.8	0.00	0.00	0.00
9,000.0	90.00	268.65	6,904.9	1,756.3	-1,421.8	1,691.1	0.00	0.00	0.00
9,100.0	90.00	268.64	6,904.9	1,753.9	-1,521.7	1,789.3	0.00	0.00	0.00
9,200.0	90.00	268.64	6,904.9	1,751.5	-1,621.7	1,887.5	0.00	0.00	0.00
9,300.0	90.00	268.63	6,904.9	1,749.1	-1,721.7	1,985.7	0.00	0.00	0.00
9,400.0	90.00	268.63	6,904.9	1,746.8	-1,821.6	2,084.0	0.00	0.00	0.00
9,500.0	90.00	268.62	6,904.9	1,744.4	-1,921.6	2,182.2	0.00	0.00	0.00
9,600.0	90.00	268.62	6,904.9	1,741.9	-2,021.6	2,280.4	0.00	0.00	0.00
9,700.0	90.00	268.61	6,904.9	1,739.5	-2,121.6	2,378.6	0.00	0.00	0.00
9,800.0	90.00	268.61	6,904.9	1,737.1	-2,221.5	2,476.8	0.00	0.00	0.00
9,900.0	90.00	268.60	6,904.9	1,734.7	-2,321.5	2,575.0	0.00	0.00	0.00
10,000.0	90.00	268.60	6,904.9	1,732.2	-2,421.5	2,673.2	0.00	0.00	0.00
10,100.0	90.00	268.59	6,904.9	1,729.8	-2,521.4	2,771.4	0.00	0.00	0.00
10,200.0	90.00	268.59	6,904.9	1,727.3	-2,621.4	2,869.6	0.00	0.00	0.00
10,300.0	90.00	268.59	6,904.9	1,724.9	-2,721.4	2,967.9	0.00	0.00	0.00
10,400.0	90.00	268.58	6,904.9	1,722.4	-2,821.3	3,066.1	0.00	0.00	0.00
10,500.0	90.00	268.58	6,904.9	1,719.9	-2,921.3	3,164.3	0.00	0.00	0.00
10,600.0	90.00	268.57	6,904.9	1,717.4	-3,021.3	3,262.5	0.00	0.00	0.00
10,700.0	90.00	268.57	6,904.9	1,714.9	-3,121.3	3,360.7	0.00	0.00	0.00
10,800.0	90.00	268.56	6,904.9	1,712.4	-3,221.2	3,458.9	0.00	0.00	0.00
10,900.0	90.00	268.56	6,904.9	1,709.9	-3,321.2	3,557.1	0.00	0.00	0.00
11,000.0	90.00	268.55	6,904.9	1,707.4	-3,421.2	3,655.2	0.00	0.00	0.00
11,100.0	90.00	268.55	6,904.9	1,704.9	-3,521.1	3,753.4	0.00	0.00	0.00
11,200.0	90.00	268.54	6,904.9	1,702.3	-3,621.1	3,851.6	0.00	0.00	0.00
11,300.0	90.00	268.54	6,904.9	1,699.8	-3,721.1	3,949.8	0.00	0.00	0.00
11,400.0	90.00	268.53	6,904.9	1,697.2	-3,821.0	4,048.0	0.00	0.00	0.00
11,500.0	90.00	268.53	6,904.9	1,694.7	-3,921.0	4,146.2	0.00	0.00	0.00
11,600.0	90.00	268.53	6,904.9	1,692.1	-4,021.0	4,244.4	0.00	0.00	0.00
11,700.0	90.00	268.52	6,904.9	1,689.5	-4,120.9	4,342.6	0.00	0.00	0.00
11,800.0	90.00	268.52	6,904.9	1,686.9	-4,220.9	4,440.8	0.00	0.00	0.00
11,900.0	90.00	268.51	6,904.9	1,684.3	-4,320.9	4,538.9	0.00	0.00	0.00
12,000.0	90.00	268.51	6,904.9	1,681.7	-4,420.8	4,637.1	0.00	0.00	0.00
12,100.0	90.00	268.50	6,904.9	1,679.1	-4,520.8	4,735.3	0.00	0.00	0.00
12,200.0	90.00	268.50	6,904.9	1,676.5	-4,620.8	4,833.5	0.00	0.00	0.00
12,300.0	90.00	268.49	6,904.9	1,673.9	-4,720.7	4,931.6	0.00	0.00	0.00
12,400.0	90.00	268.49	6,904.9	1,671.3	-4,820.7	5,029.8	0.00	0.00	0.00
12,500.0	90.00	268.48	6,904.9	1,668.6	-4,920.7	5,128.0	0.00	0.00	0.00
12,600.0	90.00	268.48	6,904.9	1,666.0	-5,020.6	5,226.2	0.00	0.00	0.00
12,700.0	90.00	268.48	6,904.9	1,663.3	-5,120.6	5,324.3	0.00	0.00	0.00
12,800.0	90.00	268.47	6,904.9	1,660.6	-5,220.6	5,422.5	0.00	0.00	0.00
12,900.0	90.00	268.47	6,904.9	1,658.0	-5,320.5	5,520.7	0.00	0.00	0.00
13,000.0	90.00	268.46	6,904.9	1,655.3	-5,420.5	5,618.8	0.00	0.00	0.00
13,100.0	90.00	268.46	6,904.9	1,652.6	-5,520.4	5,717.0	0.00	0.00	0.00

Planning Report

Database:	EDT_32Bit_ODBC	Local Co-ordinate Reference:	Well WALT 17W-20-3C
Company:	EXTRACTION OIL & GAS	TVD Reference:	KB 25' @ 5105.0usft
Project:	Weld County	MD Reference:	KB 25' @ 5105.0usft
Site:	Sec 17-T7N-R67W	North Reference:	True
Well:	WALT 17W-20-3C	Survey Calculation Method:	Minimum Curvature
Wellbore:	ORIGINAL WELLBORE		
Design:	PROPOSAL 1		

Planned Survey										
Measured Depth (usft)	Inclination (°)	Azimuth (°)	Vertical Depth (usft)	+N/-S (usft)	+E/-W (usft)	Vertical Section (usft)	Dogleg Rate (°/100ft)	Build Rate (°/100ft)	Turn Rate (°/100ft)	
13,200.0	90.00	268.45	6,904.9	1,649.9	-5,620.4	5,815.1	0.00	0.00	0.00	
13,300.0	90.00	268.45	6,904.9	1,647.2	-5,720.4	5,913.3	0.00	0.00	0.00	
13,400.0	90.00	268.44	6,904.9	1,644.5	-5,820.3	6,011.5	0.00	0.00	0.00	
13,500.0	90.00	268.44	6,904.9	1,641.8	-5,920.3	6,109.6	0.00	0.00	0.00	
13,600.0	90.00	268.43	6,904.9	1,639.0	-6,020.3	6,207.8	0.00	0.00	0.00	
13,700.0	90.00	268.43	6,904.9	1,636.3	-6,120.2	6,305.9	0.00	0.00	0.00	
13,800.0	90.00	268.42	6,904.9	1,633.5	-6,220.2	6,404.1	0.00	0.00	0.00	
13,900.0	90.00	268.42	6,904.9	1,630.8	-6,320.1	6,502.2	0.00	0.00	0.00	
14,000.0	90.00	268.42	6,904.9	1,628.0	-6,420.1	6,600.4	0.00	0.00	0.00	
14,100.0	90.00	268.41	6,904.9	1,625.3	-6,520.1	6,698.5	0.00	0.00	0.00	
14,200.0	90.00	268.41	6,904.9	1,622.5	-6,620.0	6,796.7	0.00	0.00	0.00	
14,300.0	90.00	268.40	6,904.9	1,619.7	-6,720.0	6,894.8	0.00	0.00	0.00	
14,400.0	90.00	268.40	6,904.9	1,616.9	-6,820.0	6,993.0	0.00	0.00	0.00	
14,500.0	90.00	268.39	6,904.9	1,614.1	-6,919.9	7,091.1	0.00	0.00	0.00	
14,600.0	90.00	268.39	6,904.9	1,611.3	-7,019.9	7,189.2	0.00	0.00	0.00	
14,700.0	90.00	268.38	6,904.9	1,608.5	-7,119.8	7,287.4	0.00	0.00	0.00	
14,800.0	90.00	268.38	6,904.9	1,605.7	-7,219.8	7,385.5	0.00	0.00	0.00	
14,900.0	90.00	268.37	6,904.9	1,602.8	-7,319.8	7,483.6	0.00	0.00	0.00	
15,000.0	90.00	268.37	6,904.9	1,600.0	-7,419.7	7,581.8	0.00	0.00	0.00	
15,100.0	90.00	268.36	6,904.9	1,597.1	-7,519.7	7,679.9	0.00	0.00	0.00	
15,200.0	90.00	268.36	6,904.9	1,594.3	-7,619.6	7,778.0	0.00	0.00	0.00	
15,300.0	90.00	268.36	6,904.9	1,591.4	-7,719.6	7,876.2	0.00	0.00	0.00	
15,400.0	90.00	268.35	6,904.9	1,588.5	-7,819.6	7,974.3	0.00	0.00	0.00	
15,500.0	90.00	268.35	6,904.9	1,585.6	-7,919.5	8,072.4	0.00	0.00	0.00	
15,600.0	90.00	268.34	6,904.9	1,582.8	-8,019.5	8,170.5	0.00	0.00	0.00	
15,700.0	90.00	268.34	6,904.9	1,579.9	-8,119.4	8,268.7	0.00	0.00	0.00	
15,800.0	90.00	268.33	6,904.9	1,577.0	-8,219.4	8,366.8	0.00	0.00	0.00	
15,900.0	90.00	268.33	6,905.0	1,574.0	-8,319.3	8,464.9	0.00	0.00	0.00	
16,000.0	90.00	268.32	6,905.0	1,571.1	-8,419.3	8,563.0	0.00	0.00	0.00	
16,100.0	90.00	268.32	6,905.0	1,568.2	-8,519.3	8,661.1	0.00	0.00	0.00	
16,200.0	90.00	268.31	6,905.0	1,565.2	-8,619.2	8,759.3	0.00	0.00	0.00	
16,300.0	90.00	268.31	6,905.0	1,562.3	-8,719.2	8,857.4	0.00	0.00	0.00	
16,400.0	90.00	268.30	6,905.0	1,559.3	-8,819.1	8,955.5	0.00	0.00	0.00	
16,500.0	90.00	268.30	6,905.0	1,556.4	-8,919.1	9,053.6	0.00	0.00	0.00	
16,600.0	90.00	268.30	6,905.0	1,553.4	-9,019.0	9,151.7	0.00	0.00	0.00	
16,700.0	90.00	268.29	6,905.0	1,550.4	-9,119.0	9,249.8	0.00	0.00	0.00	
16,800.0	90.00	268.29	6,905.0	1,547.5	-9,218.9	9,347.9	0.00	0.00	0.00	
16,858.1	90.00	268.29	6,905.0	1,545.7	-9,277.1	9,404.9	0.00	0.00	0.00	
TD at 16858.1' MD										

Design Targets										
Target Name	Dip Angle (°)	Dip Dir. (°)	TVD (usft)	+N/-S (usft)	+E/-W (usft)	Northing (usft)	Easting (usft)	Latitude		Longitude
WALT 17W-20-3C-PBHL - hit/miss target - Shape - Point	0.00	0.00	6,905.0	1,545.7	-9,277.1	1,454,445.05	3,154,869.85	40° 34' 46.250 N		104° 56' 32.838 W
WALT 17W-20-3C-LP - plan hits target center - Point	0.00	0.00	6,905.0	1,787.0	-93.9	1,454,747.49	3,164,051.21	40° 34' 48.652 N		104° 54' 33.822 W

Planning Report

Database:	EDT_32Bit_ODBC	Local Co-ordinate Reference:	Well WALT 17W-20-3C
Company:	EXTRACTION OIL & GAS	TVD Reference:	KB 25' @ 5105.0usft
Project:	Weld County	MD Reference:	KB 25' @ 5105.0usft
Site:	Sec 17-T7N-R67W	North Reference:	True
Well:	WALT 17W-20-3C	Survey Calculation Method:	Minimum Curvature
Wellbore:	ORIGINAL WELLBORE		
Design:	PROPOSAL 1		

Formations						
Measured Depth (usft)	Vertical Depth (usft)	Name	Lithology	Dip (°)	Dip Direction (°)	
4,045.4	3,835.0	SUSSEX				
4,483.4	4,210.0	SHANNON				
7,056.2	6,605.0	NIOBRARA				
7,470.4	6,870.0	FORT HAYS				
7,671.8	6,905.0	CODELL				

Plan Annotations					
Measured Depth (usft)	Vertical Depth (usft)	Local Coordinates			
		+N/-S (usft)	+E/-W (usft)	Comment	
1,550.0	1,550.0	0.0	0.0	BUILD 2°/100'	
3,105.0	3,029.8	397.9	105.9	HOLD 31.10° INC	
5,116.5	4,752.1	1,402.0	373.2	DROP 2°/100'	
6,671.5	6,231.9	1,799.9	479.1	HOLD VERTICAL	
6,771.5	6,331.9	1,799.9	479.1	KOP, BUILD 10°/100'	
7,671.8	6,905.0	1,787.0	-93.9	LP @ 90° INC	
16,858.1	6,905.0	1,545.7	-9,277.1	TD at 16858.1' MD	