

K:\JAMARKO\2014\102_QUARTER_CIRCLE_SEC_24_T1N_R67W\PLATS\24-8HZ\QUARTER_CIRCLE_24-8HZ.dwg, 4/18/2017 11:46:17 AM, lba

T1N, R67W

WELLBORE CONTINUES
INTO SECTION 13

MATCH LINE
SEE SHEET 2

NW. COR.
SEC. 24, T1N, R67W
FOUND 2 1/2" ALUM. CAP
R.L.S. NO. 11372

S 88°09'41" W 2617.91' (M)

S 89°18'03" W 2641.76' (M)

NE. COR.
SEC. 24, T1N, R67W
FOUND 2 1/2" ALUM. CAP
L.S. NO. 20671

N 00°46'16" W 2588.71' (M)

N 00°22'02" W 9576' GRID
N 00°03'29" E TRUE
N 08°11'02" W MAGNETIC

N 00°51'55" W
2627.99' (M)

SURFACE LOCATION: NAD 83
GROUND ELEVATION= 4940.0'
LATITUDE= 40.030335°
LONGITUDE= -104.841879°
LATITUDE= 40°01'49.205"
LONGITUDE= -104°50'30.764"
HEEL LOCATION: NAD 83
LATITUDE= 40.031847°
LONGITUDE= -104.840881°
LATITUDE= 40°01'54.650"
LONGITUDE= -104°50'27.172"
BOTTOM HOLE LOCATION: NAD 83
LATITUDE= 40.058134°
LONGITUDE= -104.840846°
LATITUDE= 40°03'29.282"
LONGITUDE= -104°50'27.046"

N 00°00'55" W
1309.89' (M)

N. 1/16 COR.
SEC. 24, T1N, R67W
SEC. 19, T1N, R66W
FOUND 2 1/2" ALUM. CAP
R.L.S. NO. 11372

N 00°10'35" W
1305.53' (M)

E. 1/4 COR.
SEC. 24, T1N, R67W
SET 2 1/2" ALUM. CAP
W.C. 125' N. OF
CORNER POSITION
P.L.S. NO. 38512

W. 1/4 COR.
SEC. 24, T1N, R67W
FOUND 2 1/2" ALUM. CAP
L.S. NO. 23027

S 89°01'18" W
2621.79' (M)

24

CENTER 1/4 COR.
SEC. 24, T1N, R67W
SET 2 1/2" ALUM. CAP
P.L.S. NO. 38512

S 89°01'18" W
2606.63' (M)

N 00°40'08" W 2603.30' (M)

HEEL
LOCATION

2101'

1819'

N 00°51'55" W
2614.58' (M)

QUARTER CIRCLE 24-8HZ
SURFACE LOCATION

N 01°15'15" W 2618.95' (M)

SW. COR.
SEC. 24, T1N, R67W
FOUND 2 1/2" ALUM. CAP
P.L.S. NO. 9644

S 89°16'05" W 2630.73' (M)

S. 1/4 COR.
SEC. 24, T1N, R67W
FOUND 2 1/2" ALUM. CAP
P.L.S. NO. 36073

S 89°06'59" W 2624.40' (M)

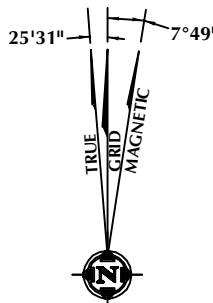
SE. COR.
SEC. 24, T1N, R67W
FOUND 2" ALUM. CAP
ILLEGIBLE

CERTIFICATE OF SURVEYOR:

THIS IS TO CERTIFY THAT THE ABOVE PLAT WAS PREPARED FROM FIELD NOTES OF ACTUAL SURVEY MADE BY ME OR UNDER MY SUPERVISION AND THAT THESE ARE TRUE AND CORRECT TO THE BEST OF MY KNOWLEDGE AND BELIEF. THIS CERTIFICATE DOES NOT REPRESENT A LAND SURVEY PLAT OR IMPROVEMENT SURVEY PLAT AS DEFINED BY C.R.S. 38-51-102 AND CANNOT BE RELIED UPON TO DETERMINE OWNERSHIP.

Randall K. French
RANDALL K. FRENCH
PROFESSIONAL LAND SURVEYOR
COLORADO REGISTRATION NUMBER 18512

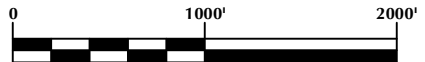
NOTICE:
ACCORDING TO COLORADO STATE LAW YOU MUST COMMENCE ANY LEGAL ACTION BASED UPON ANY DEFECT IN THIS SURVEY WITHIN THREE YEARS AFTER YOU FIRST DISCOVER SUCH DEFECT. IN NO EVENT MAY ANY ACTION BASED UPON ANY DEFECT IN THIS SURVEY BE COMMENCED MORE THAN TEN YEARS FROM THE DATE ON THE CERTIFICATION SHOWN HEREON.



NOTE:
MAGNETIC NORTH IS CURRENT AS OF 2/7/2017.
MAGNETIC NORTH CHANGES WEST 0°06' PER YEAR.

NOTES:

- ▲ INDICATES SECTION CORNER
- INDICATES CALCULATED CORNER
- ELEVATION BASED ON NAVD88 (GEOID12B)
- BASIS OF BEARING DERIVED FROM COLORADO COORDINATE SYSTEM OF 1983 NORTH ZONE.
- ALL MEASURED DISTANCES ARE GRID.
COMBINED SCALE FACTOR: .99973172 CALCULATED FROM THE SE. CORNER OF SECTION 24, T1N, R67W
- OPERATOR: ROB WILSON / PDOP = 1.5
- SEE ADDENDUM TO WELL LOCATION CERTIFICATE FOR EXISTING IMPROVEMENTS WITHIN 500' OF THE WELL PAD.
- WELL FOOTAGES ARE MEASURED AT RIGHT ANGLES TO THE SECTION LINES.
- THE BOTTOM OF HOLE BEARS N00°22'02"W, 9576' FROM THE HEEL LOCATION.



WELL PAD - QUARTER CIRCLE 24-8HZ

QUARTER CIRCLE 24-8HZ
WELL LOCATION CERTIFICATE
344' FSL & 1819' FWL SESW (SURFACE)
893' FSL & 2101' FWL SESW (HEEL)
LOCATED IN SECTION 24
50' FNL & 2151' FWL NENW (BOTTOM)
LOCATED IN SECTION 13
T1N, R67W, 6TH P.M.
WELD COUNTY, COLORADO

Kerr-McGee Oil &
Gas Onshore L.P.
1099 18th Street
Denver, Colorado 80202



CONSULTING, LLC

SHERIDAN OFFICE
1095 Saberton Avenue
Sheridan, Wyoming 82801
Phone 307-674-0609

LOVELAND OFFICE
1635 Foxtrail Drive, Suite 204
Loveland, Colorado 80538
Phone 970-776-4331

DRAFTED BY:	LMO	CHECKED BY:	RKF	SHEET NO:
DATE DRAFTED:	4/18/17	DATE SURVEYED:	12/8/16	1
REVISED:		FILE NAME:	14-102	1 OF 2

T1N, R67W

E. 1/16 COR.
SEC. 12 & SEC. 13, T1N, R67W
FOUND 2 1/2" ALUM. CAP
R.L.S. NO. 11372

NW. COR.
SEC. 13, T1N, R67W
FOUND 2 1/2" ALUM. CAP
R.L.S. NO. 11372

S 89°02'22" W 1307.33' (M)
S 89°02'18" W 1307.36' (M)

NE. COR.
SEC. 13, T1N, R67W
FOUND 2 1/2" ALUM. CAP
R.L.S. NO. 11372

N. 1/4 COR.
SEC. 13, T1N, R67W
FOUND 2 1/2" ALUM. CAP
R.L.S. NO. 11372

BOTTOM OF HOLE:
50' FNL & 2151' FWL

N 00°07'39" W 2631.95' (M)

N 00°39'29" W 2637.89' (M)

S. 1/4 COR.
SEC. 13, T1N, R67W
FOUND 2 1/2" ALUM. CAP
R.L.S. NO. 11372

SURFACE LOCATION: NAD 83
GROUND ELEVATION= 4940.0'
LATITUDE= 40.030335°
LONGITUDE= -104.841879°
HEEL LOCATION: NAD 83
LATITUDE= 40.031847°
LONGITUDE= -104.840881°
LATITUDE= 40°01'54.650"
LONGITUDE= -104°50'27.172"
BOTTOM HOLE LOCATION: NAD 83
LATITUDE= 40.058134°
LONGITUDE= -104.840846°
LATITUDE= 40°03'29.282"
LONGITUDE= -104°50'27.046"

W. 1/4 COR.
SEC. 13, T1N, R67W
FOUND 2 1/2" ALUM. CAP
R.L.S. NO. 11372

S. 1/16 COR.
SEC. 13 & SEC. 14
T1N, R67W
SET 2 1/2" ALUM. CAP
P.L.S. NO. 38512

SW. COR.
SEC. 13, T1N, R67W
FOUND 2 1/2" ALUM. CAP
R.L.S. NO. 11372

S 89°58'44" W 2617.48' (M)

CENTER 1/4 COR.
SEC. 13, T1N, R67W
FOUND 2 1/2" ALUM. CAP
R.L.S. NO. 11372

N 00°22'02" W 9576' GRID
N 00°03'29" E TRUE
N 08°11'02" W MAGNETIC

S 89°03'10" W 2640.28' (M)

E. 1/4 COR.
SEC. 13, T1N, R67W
FOUND 2 1/2" ALUM. CAP
R.L.S. NO. 11372

S. 1/16 COR.
SEC. 13, T1N, R67W &
SEC. 18, T1N, R66W
FOUND 2 1/2" ALUM. CAP
R.L.S. NO. 11372

SE. COR.
SEC. 13, T1N, R67W
FOUND 2 1/2" ALUM. CAP
L.S. NO. 20671

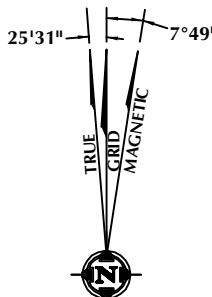
MATCH LINE
SEE SHEET 1

CERTIFICATE OF SURVEYOR:

THIS IS TO CERTIFY THAT THE ABOVE PLAT WAS PREPARED FROM FIELD NOTES OF ACTUAL SURVEY MADE BY ME OR UNDER MY SUPERVISION AND THAT THESE ARE TRUE AND CORRECT TO THE BEST OF MY KNOWLEDGE AND BELIEF. THIS CERTIFICATE DOES NOT REPRESENT A LAND SURVEY PLAT OR IMPROVEMENT SURVEY PLAT AS DEFINED BY C.R.S. 38-51-102 AND CANNOT BE RELIED UPON TO DETERMINE OWNERSHIP.

Randall K. French
RANDALL K. FRENCH
PROFESSIONAL LAND SURVEYOR
COLORADO REGISTRATION NUMBER 18512

NOTICE:
ACCORDING TO COLORADO STATE LAW YOU MUST COMMENCE ANY LEGAL ACTION BASED UPON ANY DEFECT IN THIS SURVEY WITHIN THREE YEARS AFTER YOU FIRST DISCOVER SUCH DEFECT. IN NO EVENT MAY ANY ACTION BASED UPON ANY DEFECT IN THIS SURVEY BE COMMENCED MORE THAN TEN YEARS FROM THE DATE ON THE CERTIFICATION SHOWN HEREON.



NOTE:
MAGNETIC NORTH IS CURRENT AS OF 2/7/2017.
MAGNETIC NORTH CHANGES WEST 0°06' PER YEAR.

NOTES:

- ▲ INDICATES SECTION CORNER
- INDICATES CALCULATED CORNER
- ELEVATION BASED ON NAVD88 (GEOID12B)
- BASIS OF BEARING DERIVED FROM COLORADO COORDINATE SYSTEM OF 1983 NORTH ZONE.
- ALL MEASURED DISTANCES ARE GRID.
COMBINED SCALE FACTOR: .99973172 CALCULATED FROM THE SE. CORNER OF SECTION 24, T1N, R67W
- OPERATOR: ROB WILSON / PDOP = 1.5
- SEE ADDENDUM TO WELL LOCATION CERTIFICATE FOR EXISTING IMPROVEMENTS WITHIN 500' OF THE WELL PAD.
- WELL FOOTAGES ARE MEASURED AT RIGHT ANGLES TO THE SECTION LINES.
- THE BOTTOM OF HOLE BEARS N00°22'02"W, 9576' FROM THE HEEL LOCATION.



WELL PAD - QUARTER CIRCLE 24-8HZ

QUARTER CIRCLE 24-8HZ
WELL LOCATION CERTIFICATE
344' FSL & 1819' FWL SESW (SURFACE)
893' FSL & 2101' FWL SESW (HEEL)
LOCATED IN SECTION 24
50' FNL & 2151' FWL NENW (BOTTOM)
LOCATED IN SECTION 13
T1N, R67W, 6TH P.M.
WELD COUNTY, COLORADO

**Kerr-McGee Oil &
Gas Onshore L.P.**
1099 18th Street
Denver, Colorado 80202

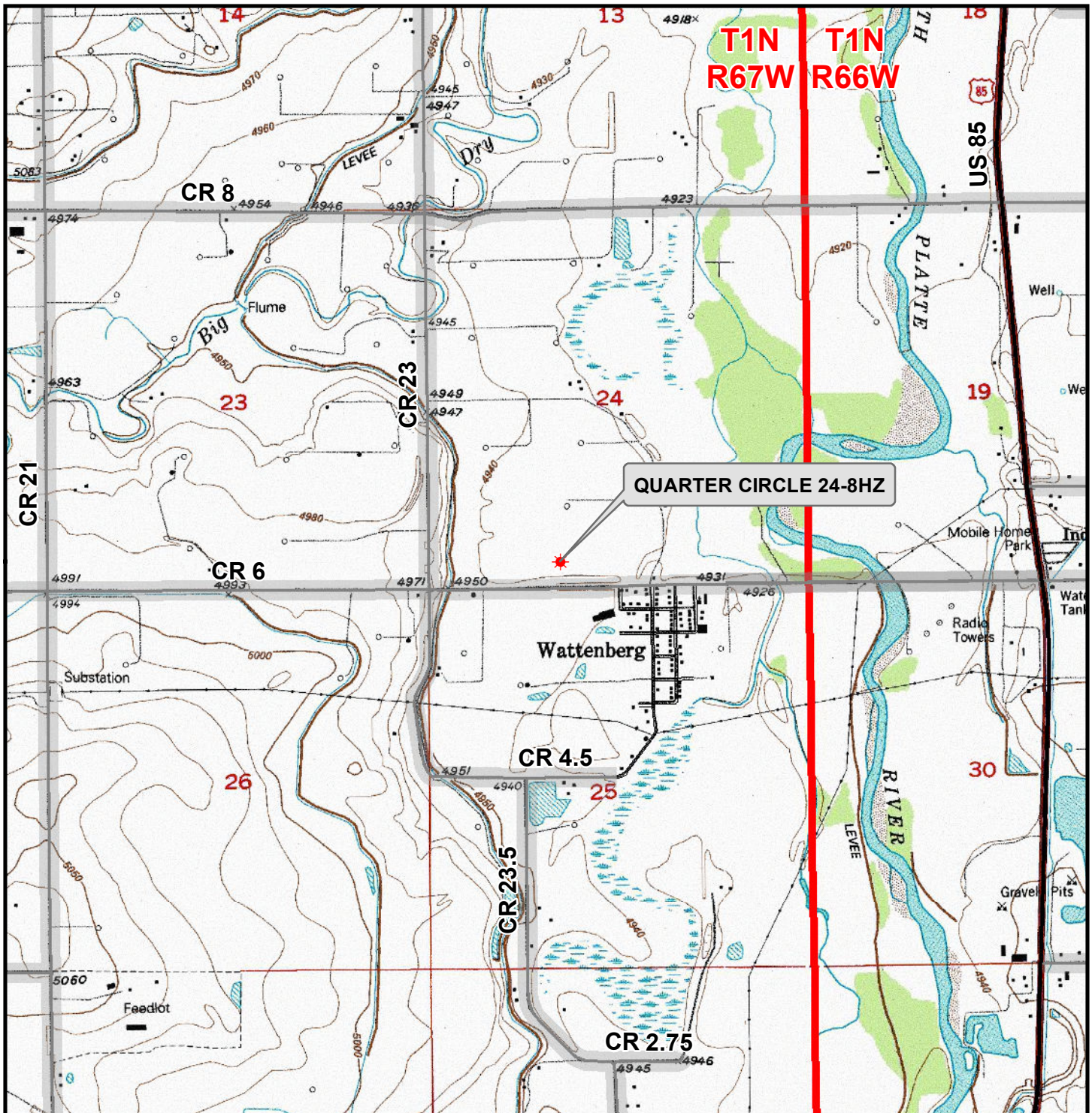


CONSULTING, LLC




SHERIDAN OFFICE
1095 Saberton Avenue
Sheridan, Wyoming 82801
Phone 307-674-0609

LOVELAND OFFICE
1635 Foxtrail Drive, Suite 204
Loveland, Colorado 80538
Phone 970-776-4331

DRAFTED BY:	LMO	CHECKED BY:	RKF	SHEET NO:
DATE DRAFTED:	4/18/17	DATE SURVEYED:	12/8/16	2
REVISED:		FILE NAME:	14-102	2 OF 2



Legend

 Well - Fee - Proposed === Road - Primitive - Existing  Road - County - Existing
 ===== Road - Improved - Existing  Road - Highway - Existing

WELL PAD - QUARTER CIRCLE 24-8HZ

**GENERAL LOCATION MAP
QUARTER CIRCLE 24-8HZ
LOCATED IN SECTION 24
T1N, R67W, 6th P.M.
WELD COUNTY, COLORADO**

**Kerr-McGee Oil &
Gas Onshore L.P.**

**1099 18th Street
Denver, Colorado 80202**



CONSULTING, LLC

SHERIDAN OFFICE
1095 Saberton Avenue
Sheridan, Wyoming 82801
Phone 307-674-0609

LOVELAND OFFICE
1635 Foxtail Drive, Suite 204
Loveland, Colorado 80538
Phone 970-776-4331

SCALE: 1" = 2,000ft

NAD83 CO-Nft

DRAWN: DP

DATE: 18 Apr 2017

REVISED:

DATE: