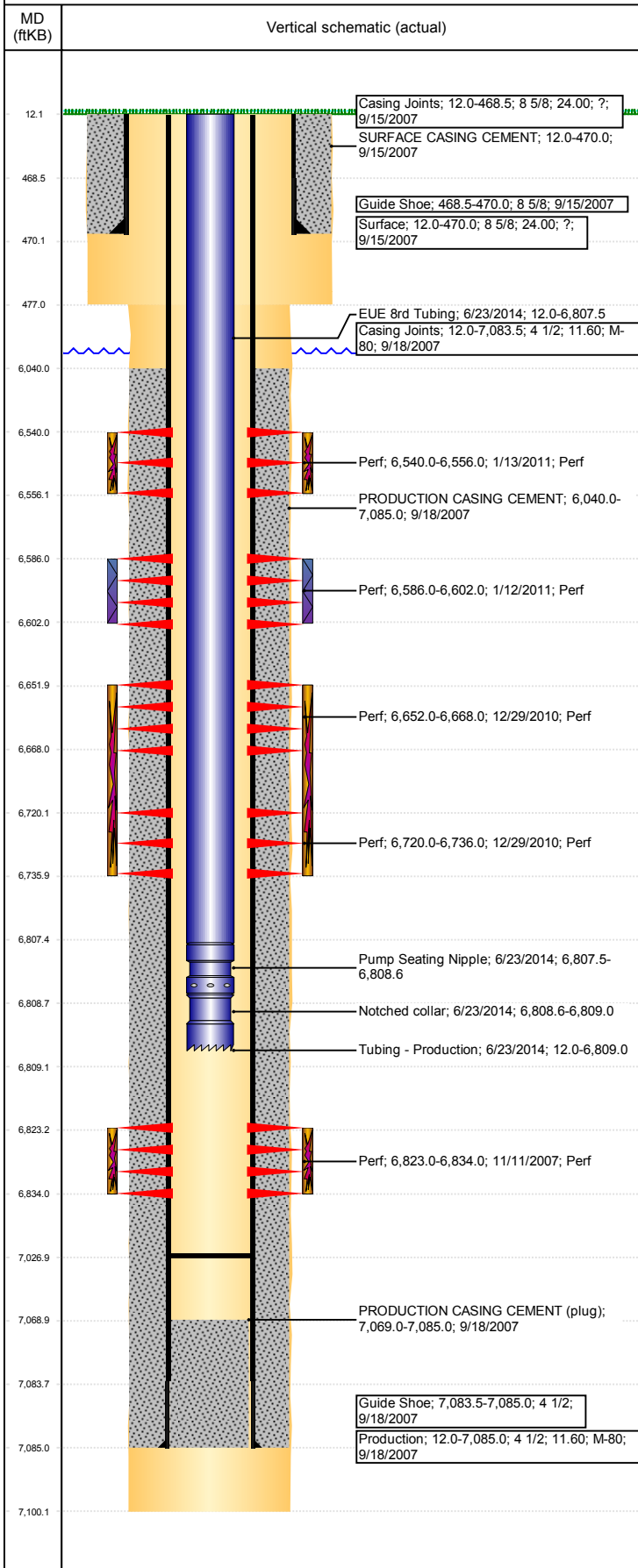


Well Name: NEW CACHE 08-22

VERTICAL - ORIGINAL HOLE, 7/12/2017 4:27:16 PM



Well Header

API 05-123-26228	Business Unit DJ BASIN	District 15	Well Config VERTICAL
Original KB Elevation (ft) 4,708	KB - GL / MSL (ftKB) 12.00	Spud Date 9/15/2007	P & A Date
Comment			

Directions To Well
WCR 63, HWY 392 - NE 9/10, NW 4/10 TO TANK BATTERY, N 5/10 INTO

Current PBD (mKB)
ORIGINAL HOLE - 7,027.0

Surface Location (Congressional)

Quarter 3 NW	Quarter 4 NW	Section 8	Township 6	Twnshp N/S Dir N	Range 63	Range E/W Dir W
-----------------	-----------------	--------------	---------------	---------------------	-------------	--------------------

Bottom Hole Location

North-South Distance (ft)	From N or S Line	East-West Distance (ft)	From E or W Line
---------------------------	------------------	-------------------------	------------------

Plug Back Total Depths

Date	Depth (ftKB)	Method	Com
9/19/2007	7,046.0	CASED HOLE LOG	DEPTH LOGGER ON CBL
9/19/2007	7,069.0	CASING TALLY	SHOE JT
2/8/2008	7,026.0	TAGGED FILL @7026'	
2/8/2008	7,068.0	TAG	C/O & LAND TBG
6/22/2014	7,027.0	TBG TAG	

Wellbore Sections

Section Des	Size (in)	Act Top, MD (ftKB)	Act Btm, MD (ftKB)
SURFACE	12 1/4	12	477
PRODUCTION	7 7/8	477	7,100

Zone Statuses

Zone Name	Status Date	Status	Fluid Type	Job	Prod Method
CODELL	1/21/2008	PR		DRILLING/COMPLETION - ORIGINAL, 9/15/2007...	
CODELL	12/23/2010	SI		RECOMPLETION, 12/23/2010 06:00	
CODELL	2/3/2011	PR		RECOMPLETION, 12/23/2010 06:00	
NIOBRARA	1/14/2011	PR		RECOMPLETION, 12/23/2010 06:00	
NIOBRARA	2/3/2011	PR		RECOMPLETION, 12/23/2010 06:00	

Casing Strings

Csg Des	Run Date	OD (in)	Wt/Len (lb/ft)	Grade	Top, MD (ftKB)	MD (ftKB)
Surface	9/15/2007	8 5/8	24.00	?	12.0	470.0
Production	9/18/2007	4 1/2	11.60	M-80	12.0	7,085.0

Cement

Des	Top (ftKB)	Btm (ftKB)
SURFACE CASING CEMENT	12.0	470.0
PRODUCTION CASING CEMENT	6,040.0	7,085.0

Tubing Components

Item Des	OD (in)	Wt (lb/ft)	Grade	Jts	Len (ft)
EUE 8rd Tubing	2 3/8	4.70	J-55	221	6,795.47
Pump Seating Nipple	2 3/8	1.10	X	1	1.10
Notched collar	2 3/8	0.00	X	1	0.40

Perforation Data

Linked Zone	Bnch/Stg	Sum of Entered Shot Total	Top (ftKB)	Btm (ftKB)	Date
NIOBRARA, ORIGINAL HOLE	A	32	6,540.00	6,556.00	1/13/2011
NIOBRARA, ORIGINAL HOLE	A	32	6,586.00	6,602.00	1/12/2011
NIOBRARA, ORIGINAL HOLE	B	32	6,652.00	6,668.00	12/29/2010
NIOBRARA, ORIGINAL HOLE	C	32	6,720.00	6,736.00	12/29/2010
CODELL, ORIGINAL HOLE		44	6,823.00	6,834.00	11/11/2007

Total (Sum)

172			
-----	--	--	--

Other In Hole

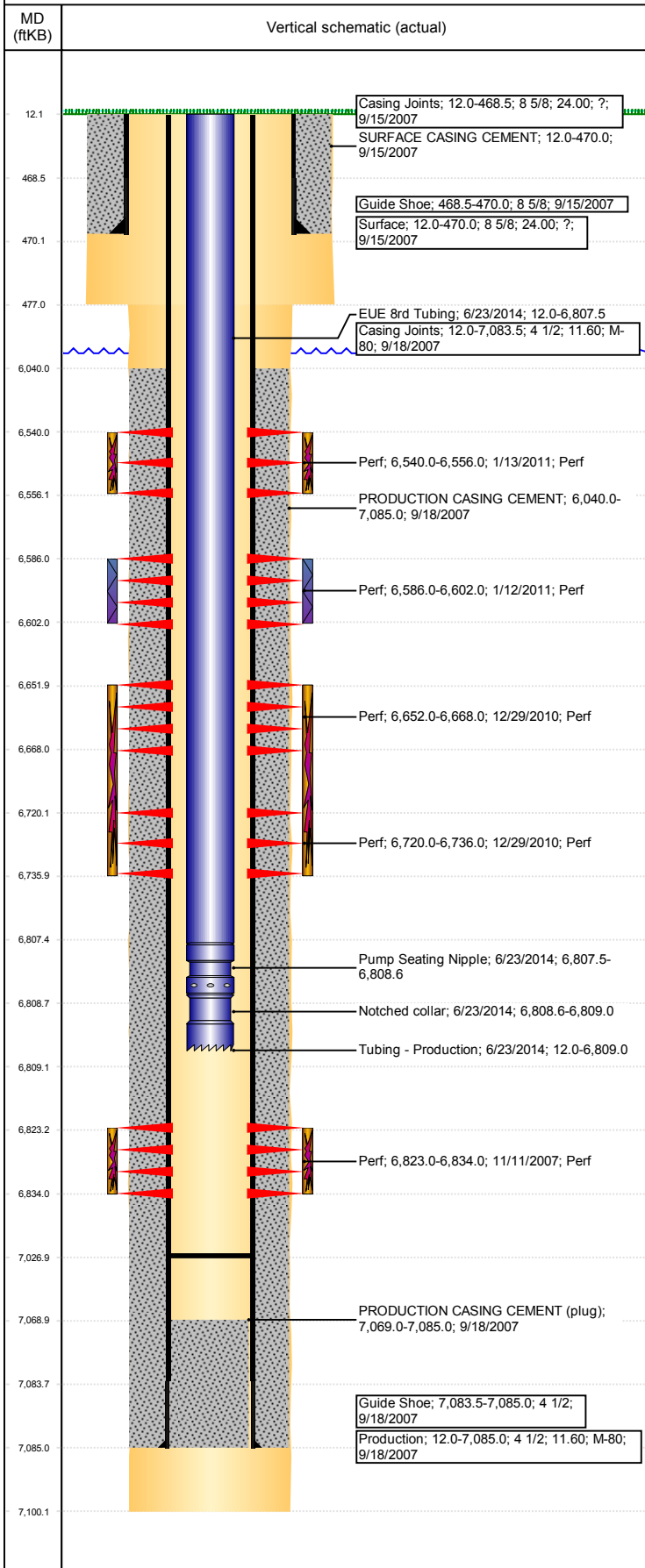
Run Date	Des	OD (in)	Top (ftKB)	Btm (ftKB)

Logs

Date	Type	Top, MD (ftKB)	Btm, MD (ftKB)
9/18/2007	COMPENSATED DENSITY	3,450.0	7,070.0
9/18/2007	INDUCTION	470.0	7,090.0
11/9/2007	SONIC/CCL/GR	5,900.0	7,044.0

Well Name: NEW CACHE 08-22

VERTICAL - ORIGINAL HOLE, 7/12/2017 4:27:17 PM



Stimulation Intervals			
Bnch/Stg	Start Date	Primary Job Type	
	11/13/2007	DRILLING/COMPLETION - ORIGINAL	
Comment			
Volume Slurry Total (gal)			
102,732.00			
Treat Pressure Avg (psi)		Treat Pressure Max (psi)	Slurry Rate Avg (bbl/min)
			3,515.0
Slurry Rate Max (bbl/min)			
4,431.0			
Bnch/Stg	Start Date	Primary Job Type	
B&C	1/12/2011	RECOMPLETION	
Comment			
(NIOBRARA B&C RC) ISIP=3195. DURING FR PAD, PUMPS KICKED OUT DUE TO PRESSURE. RESUMED FR PAD. OVERPRESSURED AT THE END OF FR PAD TO 5309 PSI. DURING 3 LB STAGE, SAND CONCENTRATION INCREASED TO 3.5 LB FOR UNKNOWN REASONS. NEAR THE END OF 3 LB STAGE, LOST PUMPS DUE TO KICK OUTS. AT THE START OF 4 LB, DENSO ON BLENDER GAVE ERRONEOUS READINGS OF 4.5 LB SAND. ALSO HAD HOPPER ON BLENDER DROP DURING 4 LB SAND. AVERAGES: VISC 20 CP , TEMP 69.8, PH 9.98 , NOLTE 0.19. POST ISIP 3295 PSI, 5 MIN 3230 PSI.			
Volume Slurry Total (gal)			
193,890.06			
Treat Pressure Avg (psi)		Treat Pressure Max (psi)	Slurry Rate Avg (bbl/min)
4,151.0		5,309.0	53.7
Slurry Rate Max (bbl/min)		62.9	
Bnch/Stg	Start Date	Primary Job Type	
	1/12/2011	RECOMPLETION	
Comment			
(NIOBRARA): DISPLACED ACID WITH 28.2 BBLS OF KCL WATER. SHUT IN WELL.			
Volume Slurry Total (gal)			
1,184.40			
Treat Pressure Avg (psi)		Treat Pressure Max (psi)	Slurry Rate Avg (bbl/min)
Slurry Rate Max (bbl/min)			
Bnch/Stg	Start Date	Primary Job Type	
A	1/13/2011	RECOMPLETION	
Comment			
(NIOBRARA A RC): ISIP=3271 PSI. DROPPED LEVEL ON BLENDER TUB, SUCKED AIR, AND PUMPS KICKED OUT. EXCEEDED 5000 PSI MAX. PRESSURE WENT TO 5014 PSI. AVERAGES: VISC=23.2 CP, PH=9.92, TEMP=72.4 DEG, NOLTE=.11. POST ISIP = 3397PSI, 5 MIN=3258 PSI.			
Volume Slurry Total (gal)			
108,735.90			
Treat Pressure Avg (psi)		Treat Pressure Max (psi)	Slurry Rate Avg (bbl/min)
4,087.0		5,014.0	41.7
Slurry Rate Max (bbl/min)		56.6	