

NOBLE ENERGY INC.
 New Cache 08-22
 NWNW 8-6N-63W
 663 FNL & 663 FWL
 WELD COUNTY, CO
 Wattenberg
CURRENT WELLBORE SCHEMATIC
 with PROPOSED P&A
 3/27/2017

API: 05-123-26228
 COGCC #

GL Elev: 4,696
 KB Elev: 4,708

Spud Date: 9/15/2007

Surface Casing :

8-5/8", 24# @ 470'
 Cement: 250 sx
 TOC: Surface

WW	300	500
SC	470	670
FH	397	597

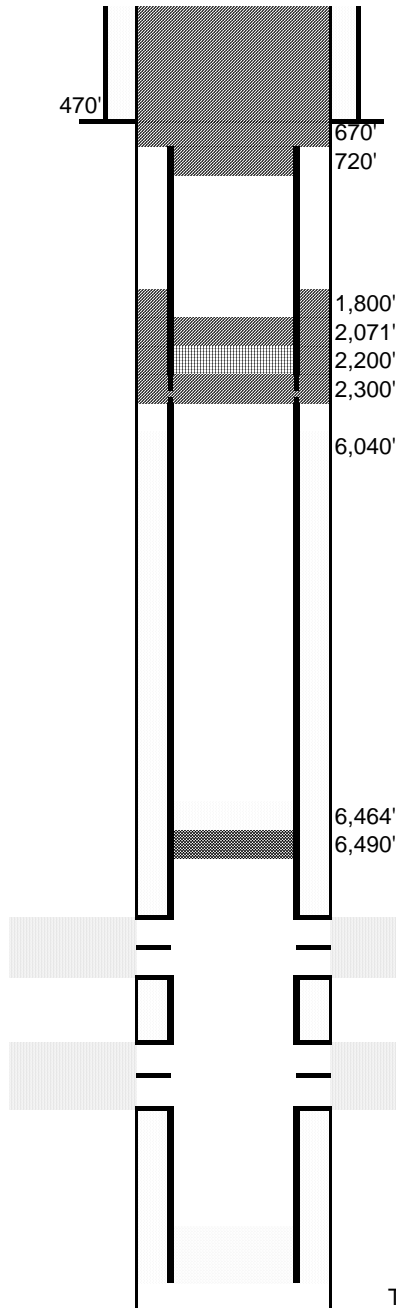
No Sussex completions within 1 mile

TOC @ 6,040'

Nio Top 6,503'

Production Casing :

4-1/2", 11.60#, M-80 @ 7,085'
 Cement: 150 sx
 TD: 9/18/2007



Cut surface casing off 6'-8' below surface.

Cut production casing at 670'
 Cmt to surface with 260 sx @ 720'

Annular cement @ 1,800'
 Cement above CICR @ 2,071'
 Set CICR @ 2,200'
 Pump 200 sx through CICR and 10 sx on top
 Perforate 4-1/2" casing @ 2,300'

CIBP @ 6,490' w/ 2 sx cement on top
 TOC above CIBP @ 6,464'

Niobrara Perforations: 6,540' - 6,736'

Codell Perforations: 6,823' - 6,834'

TD: 7,100