



July 10, 2017

Mr. Mike Gardner
TEP Environmental Specialist
TEP Rocky Mountain LLC
1058 County Road 215
Parachute, Colorado 81635

RE: Status Report: Baseline Water Quality Sampling – Drill Pad TR 32-23-597

Dear Mr. Gardner,

Western Water & Land, Inc. (WWL) completed a hydrologic Water Source evaluation for the TEP Rocky Mountain LLC (TEP) TR 32-23-597 Drill Pad in accordance with Colorado Oil and Gas Conservation Commission (COGCC) Rule 609. Drill Pad TR 32-23-597 is located in SW¹/₄, NE¹/₄, Section 23, Township 5S, Range 97W, 6th P.M. This status report addresses field revisions and the sampling location status as relevant to the original executed Baseline Water Quality Evaluation dated February 13, 2017.

The original evaluation considered all Water Sources as defined in Rule 609 within a 0.5-mile radius of the referenced drill pad. Water Sources located within a 0.5-mile radius of the TR 32-23-597 Drill Pad are shown in Figure 1. Please see the original Baseline Water Quality Evaluation (February 13, 2017) for details on how the evaluation was conducted.

Water Source Identification

Water Sources as defined in Rule 609 include Colorado Division of Water Resources (DWR) registered water wells (water wells with existing valid well permits), permitted or adjudicated springs, and monitoring wells installed for baseline sampling and monitoring under COGCC Rules 318A.e(4), 608, 609, or 908, or specified conditions of approval. Each Water Source identified within the 0.5-mile radius area is considered to be a potentially Available Water Source unless existing information suggests that the Water Source would not be suitable for the baseline water quality program. The original Baseline Water Quality Evaluation identified three potentially Available Water Sources located within 0.5 miles of the TR 32-23-597 Drill Pad (see Figure 1).

The identified potentially Available Water Sources are summarized as follows:

- Getty Spring 6G
- Getty Spring 6H
- Getty Spring 6I

Preferred Water Sources

In accordance with Rule 609, all potentially Available Water Sources within a 0.5-mile radius of the drill pad are to be identified and up to a maximum of four sources must be included in the baseline and subsequent monitoring program. Each potentially Available Water Source identified was evaluated based on WWL's hydrologic knowledge of the region, general hydrologic rationale, and in accordance with the guidelines specified in Rule 609 to identify the preferred sources for the baseline program. Since only three potentially Available Water Sources were identified they are considered to be preferred Water Sources. The preferred potentially Available Water Sources selected are as follows:

- Getty Spring 6G
- Getty Spring 6H
- Getty Spring 6I

Preferred Water Sources are incorporated into the baseline water quality monitoring program provided 1) the structures exist; 2) the structure owner, or land owner if the structure owner is not known, grants approval to sample the source; and 3) inspection of the structure confirms that a representative sample can be obtained from the structure.

Access Request

All attempts requesting permission to sample potentially Available Water Sources from the well permit holders and the property owners are recorded in the Correspondence Logs below

Correspondence Log: TR 32-23-597				
Contact Attempt Date	Contact Name	Contact Method	Responsible Person	Results
2/13/2017	Mike Gardner	Email	Jessie Pahler, WWL	SOW to be forwarded to Chevron
3/23/2017	Craig Tysse, Chevron Land Representative	Email	Mike Gardner	Access granted for all potentially Available Water Sources. Mandatory pre-sampling safety meeting scheduled.

Field Results

Each identified potentially Available Water Source and its monitoring status is as follows:

- Getty Spring 6G: water right owned by Chevron Texaco Shale Oil Company and property owned by Chevron USA, Inc.
 - Access to sample this spring was granted by Chevron North America Exploration and Production Company on March 23, 2017. WWL was unable to locate the spring location in the vicinity of the decreed location during field reconnaissance on April 5, 2017.

- Getty Spring 6H: water right owned by Chevron Texaco Shale Oil Company and property owned by Chevron USA, Inc.
 - Access to sample this spring was granted by Chevron North America Exploration and Production Company on March 23, 2017. WWL conducted sampling of the spring on April 5, 2017.
- Getty Spring 6I: water right owned by Chevron Texaco Shale Oil Company and property owned by Chevron USA, Inc.
 - Access to sample this spring was granted by Chevron North America Exploration and Production Company on March 23, 2017. WWL conducted sampling of the spring on April 5, 2017.

WWL personnel conducted a broad field reconnaissance on April 5, 2017 in the area where Getty Spring 6G is located according to DWR databases. Water was flowing in Wolf Creek in the vicinity of Getty Spring 6G; however, no spring emanation point was identified. The decreed location of the springs are shown in Figure 1. Pictures from field reconnaissance and sampling are included in Attachment A. As a result of these events, Getty Spring 6H and Getty Spring 6I are the only Available Water Sources included in the baseline water quality sampling program for Drill Pad TR 32-23-597.

If you have any questions or concerns, please contact me at (970) 242-0170.

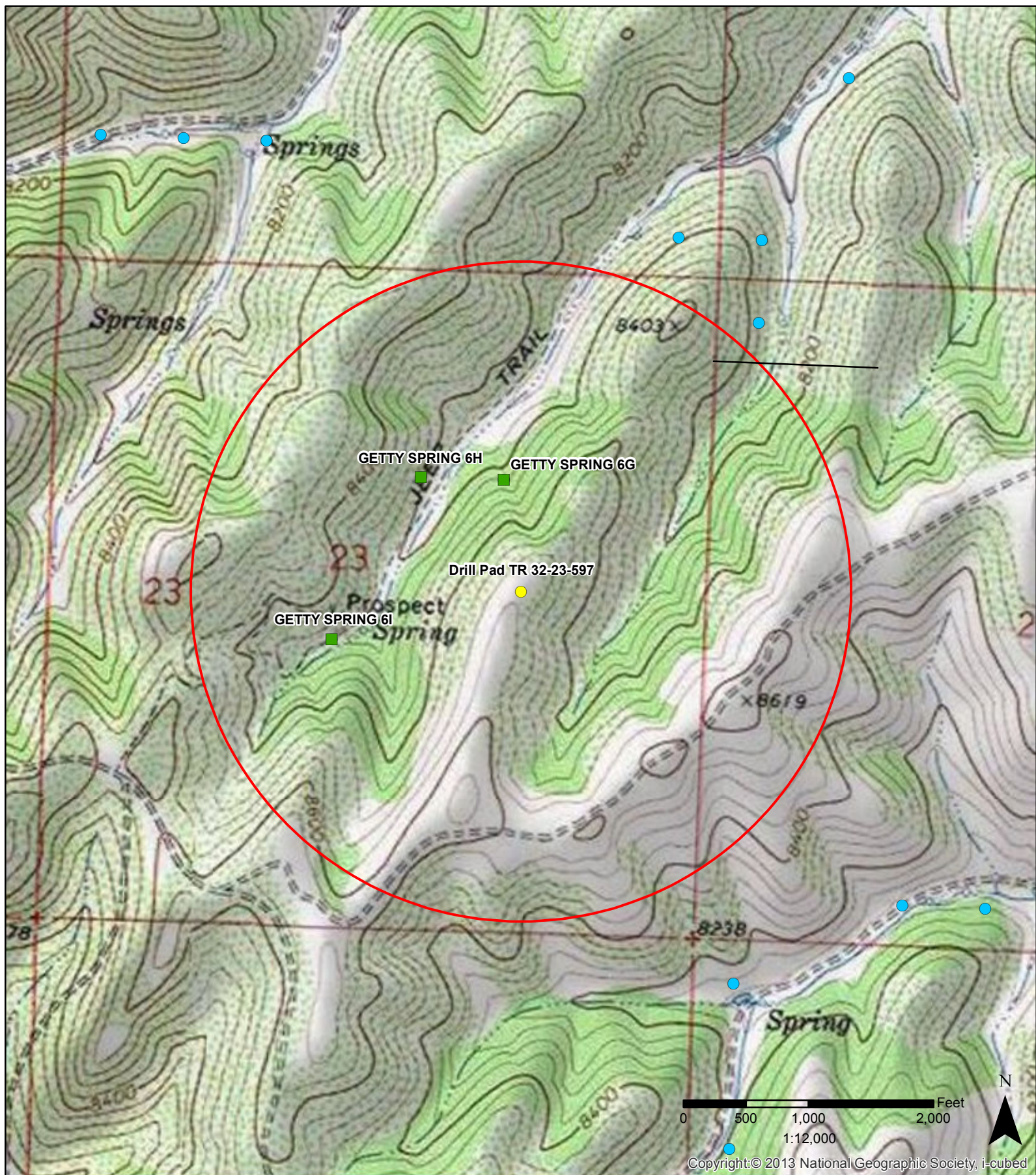
Sincerely,



Bruce D. Smith
Principal Hydrogeologist
WESTERN WATER & LAND, INC.

Attachments:

Figure 1 – Water Source Evaluation Map
Attachment A – Photographs



Legend

- Drill Pad TR 32-23-597
- Water right decree
- 0.5-mile radius evaluation area
- Outside permits or decrees
- Constructed well
- Well completion status unknown

**Figure 1: Drill Pad TR 32-23-597
0.5-Mile Radius Water Source Evaluation
SW 1/4, NE 1/4, S23, T5S, R97W, 6 PM**

Garfield County, Colorado
TEP Rocky Mountain, LLC



ATTACHMENT A

Photographs



Photo 1. Creek bed near Getty Spring 6G decreed location

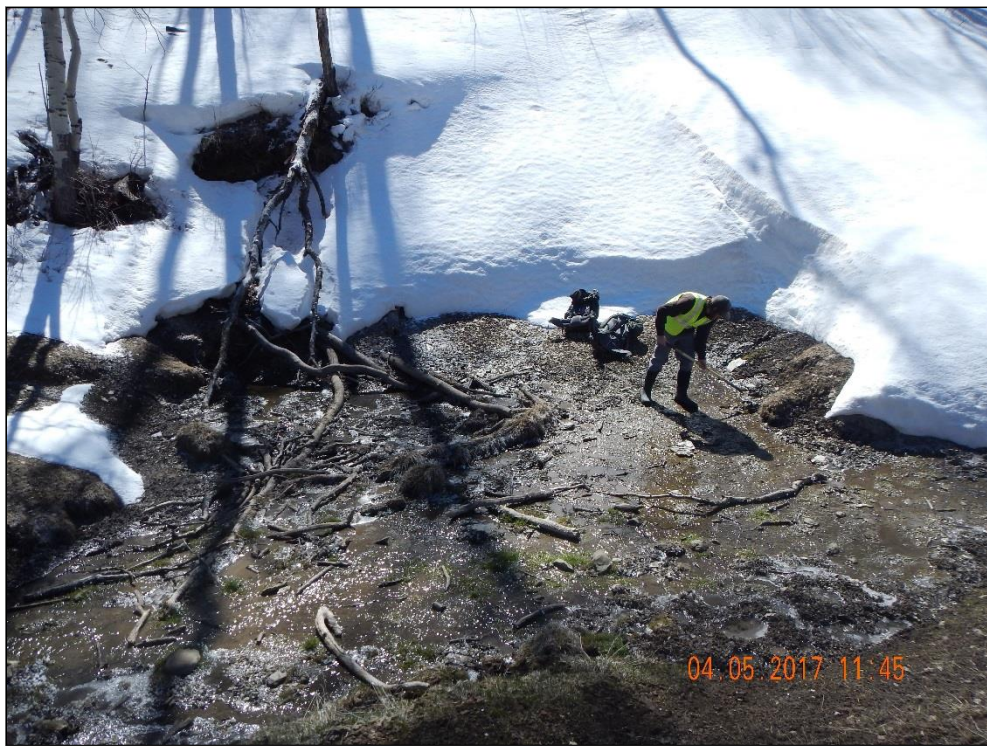


Photo 2. Getty Spring 6H Sampling Location (Getty 14H)



Photo 3. Getty Spring 6I Sampling Location (Getty 6I)