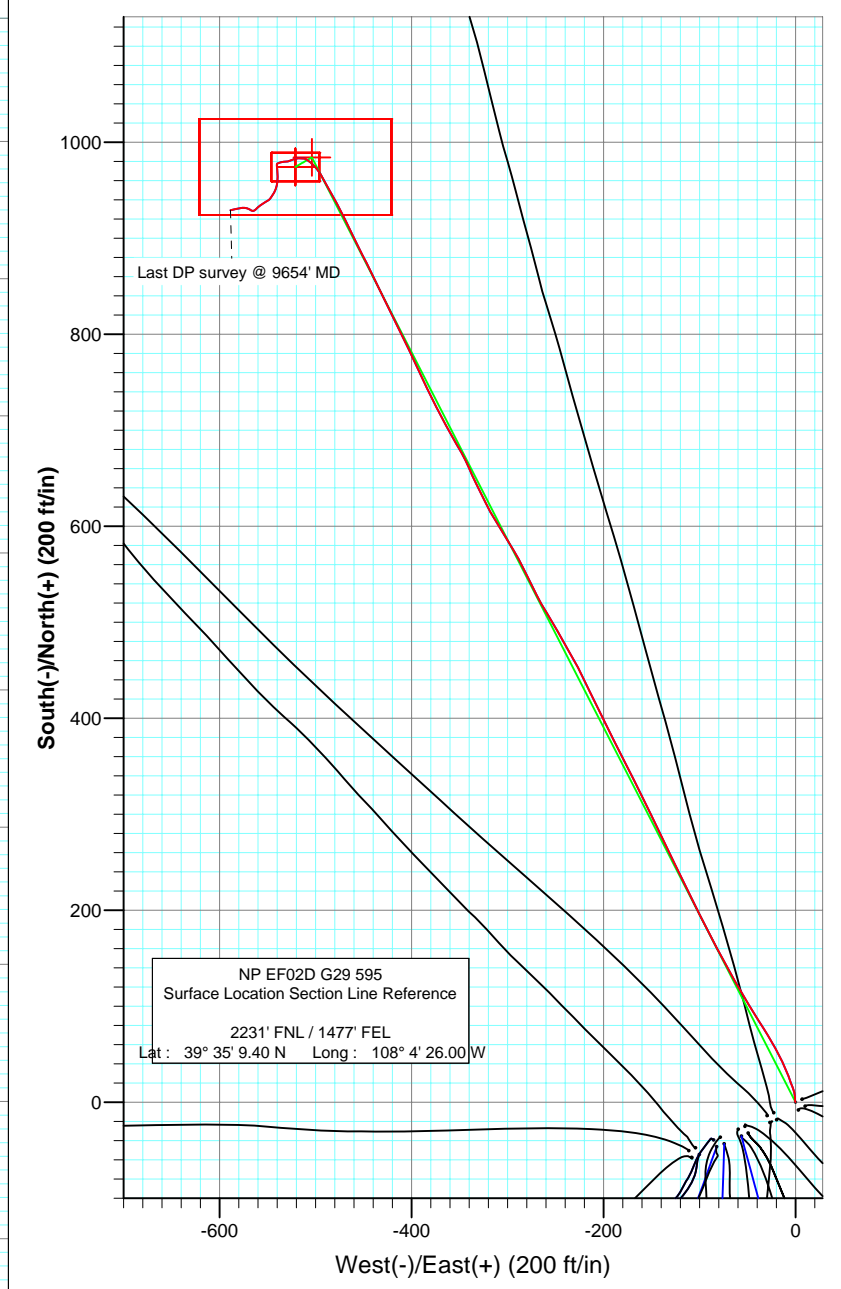
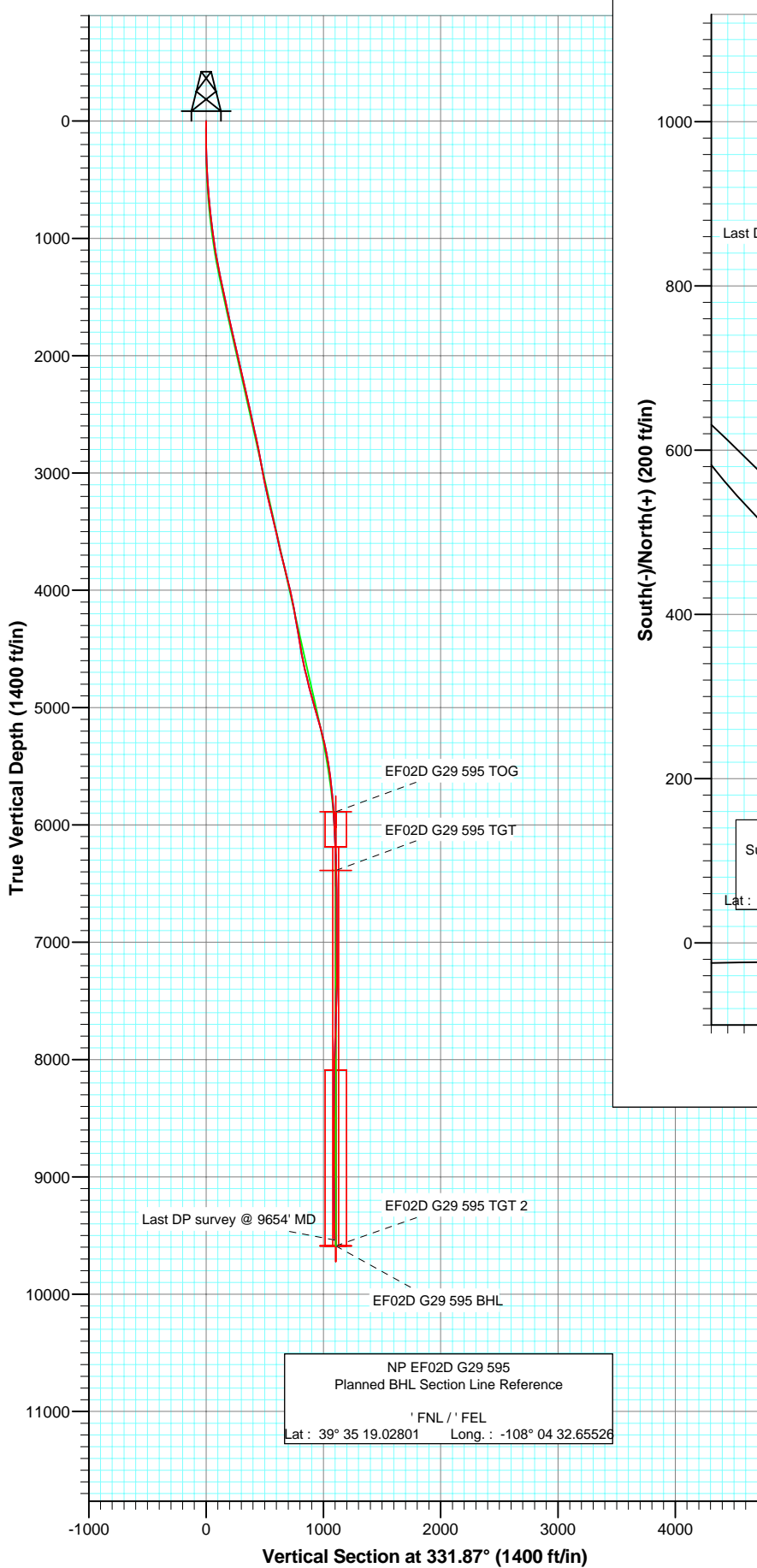




Project: North Piceance
 Site: G29 595 Pad
 Well: NP EF02D G29 595
 Wellbore: DD
 Plan: Final Survey



Azimuths to True North
 Magnetic North: 10.82°

Magnetic Field
 Strength: 52655.3snT
 Dip Angle: 65.90°
 Date: 1/9/2008
 Model: IGRF200510

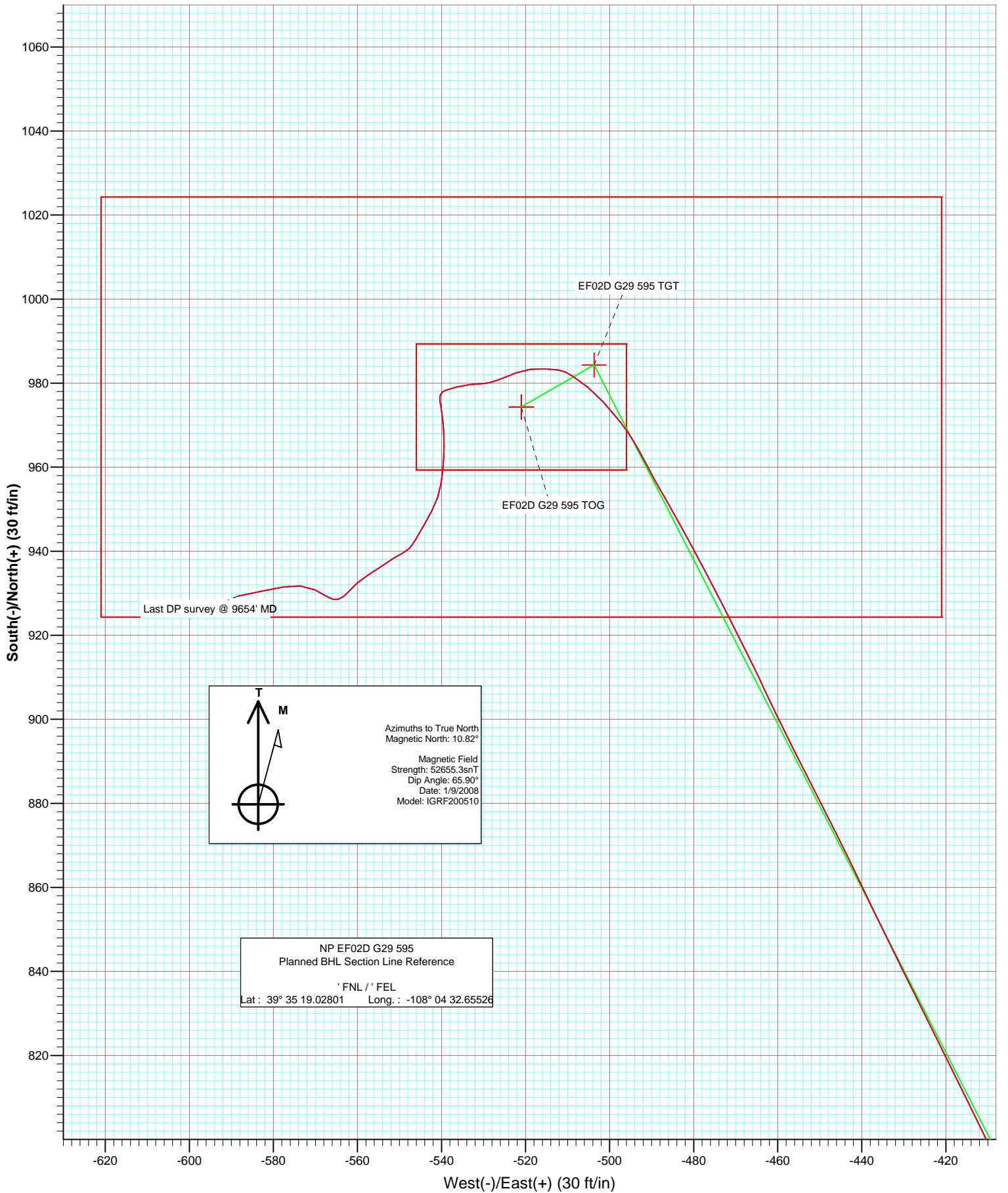
DESIGN DETAILS: DD

Job# 75464-SH,85012-MH; LR
 EF02D @ 6118.0ft (Patterson 176)

Target	Azimuth	Origin	Type	N/S	E/W	From TVD
EF02D G29 595 BHL	331.87	Slot		0.0	0.0	0.0



Project: North Piceance
Site: G29 595 Pad
Well: NP EF02D G29 595
Wellbore: DD
Plan: Final Zoom



Cathedral Energy Services

Survey Report

Company: EnCana Oil & Gas (USA) Inc	Local Co-ordinate Reference: Well NP EF02D G29 595
Project: North Piceance	TVD Reference: EF02D @ 6118.0ft (Patterson 176)
Site: G29 595 Pad	MD Reference: EF02D @ 6118.0ft (Patterson 176)
Well: NP EF02D G29 595	North Reference: True
Wellbore: DD	Survey Calculation Method: Minimum Curvature
Design: DD	Database: EDM 2003.16 US Multi User Db

Project North Piceance		
Map System: US State Plane 1983	System Datum:	Mean Sea Level
Geo Datum: North American Datum 1983		
Map Zone: Colorado Central Zone		

Site G29 595 Pad					
Site Position:		Northing:	1,648,550.62 ft	Latitude:	39° 35' 9.05 N
From:	Lat/Long	Easting:	2,274,615.26 ft	Longitude:	108° 4' 26.72 W
Position Uncertainty:	0.0 ft	Slot Radius:	"	Grid Convergence:	-1.62 °

Well NP EF02D G29 595					
Well Position	+N/-S	0.0 ft	Northing:	1,648,584.26 ft	Latitude: 39° 35' 9.40 N
	+E/-W	0.0 ft	Easting:	2,274,672.57 ft	Longitude: 108° 4' 26.00 W
Position Uncertainty		0.0 ft	Wellhead Elevation:	ft	Ground Level: 6,101.0 ft

Wellbore DD					
Magnetics	Model Name	Sample Date	Declination (°)	Dip Angle (°)	Field Strength (nT)
	IGRF200510	1/9/2008	10.82	65.90	52,655

Design DD					
Audit Notes:					
Version:	1.0	Phase:	ACTUAL	Tie On Depth:	0.0
Vertical Section:		Depth From (TVD) (ft)	+N/-S (ft)	+E/-W (ft)	Direction (°)
		0.0	0.0	0.0	331.87

Survey Program		Date	1/29/2008		
From (ft)	To (ft)	Survey (Wellbore)	Tool Name	Description	
234.0	9,654.0	Survey #1 (DD)	MWD	Geolink MWD	

Survey									
Measured Depth (ft)	Inclination (°)	Azimuth (°)	Vertical Depth (ft)	+N/-S (ft)	+E/-W (ft)	Vertical Section (ft)	Dogleg Rate (°/100ft)	Build Rate (°/100ft)	Formations / Comments
0.0	0.00	0.00	0.0	0.0	0.0	0.0	0.00	0.00	
234.0	0.70	341.90	234.0	1.4	-0.4	1.4	0.30	0.30	
293.0	1.60	2.10	293.0	2.5	-0.5	2.5	1.65	1.53	
385.0	2.30	357.00	384.9	5.7	-0.6	5.3	0.78	0.76	
477.0	3.40	345.70	476.8	10.1	-1.3	9.6	1.34	1.20	
570.0	4.50	338.90	569.6	16.2	-3.3	15.9	1.28	1.18	
665.0	5.70	340.10	664.2	24.1	-6.3	24.2	1.27	1.26	
760.0	6.10	337.50	758.7	33.2	-9.8	33.9	0.51	0.42	
855.0	6.80	335.30	853.1	43.0	-14.1	44.6	0.78	0.74	
950.0	7.00	330.90	947.4	53.2	-19.3	56.0	0.59	0.21	
1,045.0	8.30	329.30	1,041.6	64.1	-25.6	68.6	1.39	1.37	
1,140.0	9.80	328.20	1,135.4	76.9	-33.4	83.5	1.59	1.58	
1,235.0	10.60	326.20	1,228.9	91.0	-42.5	100.3	0.92	0.84	

Cathedral Energy Services

Survey Report

Company: EnCana Oil & Gas (USA) Inc	Local Co-ordinate Reference: Well NP EF02D G29 595
Project: North Piceance	TVD Reference: EF02D @ 6118.0ft (Patterson 176)
Site: G29 595 Pad	MVD Reference: EF02D @ 6118.0ft (Patterson 176)
Well: NP EF02D G29 595	North Reference: True
Wellbore: DD	Survey Calculation Method: Minimum Curvature
Design: DD	Database: EDM 2003.16 US Multi User Db

Survey									
Measured Depth (ft)	Inclination (°)	Azimuth (°)	Vertical Depth (ft)	+N/-S (ft)	+E/-W (ft)	Vertical Section (ft)	Dogleg Rate (°/100ft)	Build Rate (°/100ft)	Formations / Comments
1,330.0	12.20	330.40	1,322.0	107.0	-52.3	119.0	1.90	1.68	
1,425.0	12.60	331.70	1,414.8	124.9	-62.2	139.4	0.51	0.42	
1,520.0	11.70	330.10	1,507.7	142.3	-71.9	159.4	1.01	-0.95	
1,615.0	12.30	332.10	1,600.6	159.6	-81.4	179.2	0.77	0.63	
1,710.0	12.80	333.70	1,693.3	178.0	-90.8	199.8	0.64	0.53	
1,804.0	12.00	332.80	1,785.1	196.0	-99.9	220.0	0.88	-0.85	
1,898.0	12.20	334.20	1,877.0	213.7	-108.7	239.7	0.38	0.21	
1,993.0	12.70	332.70	1,969.8	232.0	-117.8	260.1	0.63	0.53	
2,088.0	13.50	334.60	2,062.3	251.3	-127.4	281.7	0.96	0.84	
2,183.0	13.50	334.80	2,154.7	271.3	-136.9	303.8	0.05	0.00	
2,279.0	13.00	333.70	2,248.2	291.2	-146.4	325.8	0.58	-0.52	
2,374.0	13.10	334.40	2,340.7	310.4	-155.8	347.2	0.20	0.11	
2,481.0	12.30	333.30	2,445.1	331.6	-166.2	370.7	0.78	-0.75	
2,594.0	11.70	332.40	2,555.6	352.5	-176.9	394.2	0.56	-0.53	
2,689.0	12.30	334.80	2,648.5	370.2	-185.7	414.0	0.82	0.63	
2,784.0	12.50	332.40	2,741.3	388.4	-194.7	434.4	0.58	0.21	
2,880.0	11.00	333.10	2,835.3	405.8	-203.7	453.9	1.57	-1.56	
2,974.0	9.50	335.00	2,927.8	420.8	-211.0	470.6	1.64	-1.60	
3,069.0	10.80	335.00	3,021.3	436.0	-218.1	487.3	1.37	1.37	
3,164.0	12.10	331.60	3,114.4	452.8	-226.6	506.2	1.54	1.37	
3,259.0	13.00	330.00	3,207.2	470.8	-236.7	526.8	1.02	0.95	
3,355.0	13.90	331.40	3,300.5	490.3	-247.6	549.1	1.00	0.94	
3,450.0	13.60	327.40	3,392.8	509.7	-259.1	571.7	1.05	-0.32	
3,545.0	12.30	333.70	3,485.4	528.2	-269.6	592.9	2.02	-1.37	
3,640.0	12.70	334.00	3,578.1	546.7	-278.6	613.5	0.43	0.42	
3,734.0	13.30	331.80	3,669.7	565.5	-288.3	634.6	0.83	0.64	
3,829.0	14.20	327.00	3,762.0	584.9	-299.8	657.2	1.53	0.95	
3,974.0	14.20	330.80	3,902.6	615.3	-318.1	692.7	0.64	0.00	
4,019.0	13.90	334.20	3,946.2	625.0	-323.2	703.6	1.95	-0.67	
4,114.0	12.10	334.20	4,038.8	644.3	-332.5	724.9	1.89	-1.89	
4,209.0	10.50	336.50	4,131.9	661.2	-340.3	743.5	1.75	-1.68	
4,304.0	10.20	330.10	4,225.4	676.4	-347.9	760.5	1.25	-0.32	
4,399.0	9.80	329.90	4,319.0	690.7	-356.2	777.0	0.42	-0.42	
4,494.0	8.80	333.60	4,412.7	704.2	-363.5	792.4	1.23	-1.05	
4,589.0	9.50	330.80	4,506.5	717.5	-370.5	807.5	0.87	0.74	
4,684.0	12.30	333.50	4,599.8	733.5	-378.9	825.4	3.00	2.95	
4,779.0	14.20	334.70	4,692.2	753.0	-388.3	847.2	2.02	2.00	
4,874.0	12.60	335.00	4,784.7	773.0	-397.7	869.2	1.69	-1.68	
4,970.0	14.50	334.90	4,878.0	793.3	-407.2	891.6	1.98	1.98	
5,065.0	16.90	333.40	4,969.4	816.5	-418.5	917.3	2.56	2.53	
5,160.0	16.10	334.00	5,060.5	840.7	-430.4	944.3	0.86	-0.84	
5,255.0	14.90	334.20	5,152.1	863.5	-441.5	969.7	1.26	-1.26	
5,350.0	13.80	332.60	5,244.1	884.5	-452.0	993.2	1.23	-1.16	
5,444.0	12.70	334.90	5,335.6	903.9	-461.6	1,014.7	1.30	-1.17	
5,539.0	10.30	332.70	5,428.7	920.9	-469.9	1,033.6	2.57	-2.53	
5,634.0	7.70	333.20	5,522.5	934.1	-476.7	1,048.5	2.74	-2.74	
5,729.0	7.00	330.40	5,616.7	944.8	-482.4	1,060.6	0.83	-0.74	
5,824.0	6.20	330.70	5,711.1	954.3	-487.8	1,071.6	0.84	-0.84	
5,919.0	4.30	332.30	5,805.7	961.9	-491.9	1,080.3	2.01	-2.00	
6,013.0	3.20	327.10	5,899.5	967.3	-495.0	1,086.4	1.22	-1.17	
6,108.0	3.20	320.20	5,994.3	971.5	-498.1	1,091.6	0.41	0.00	
6,203.0	3.20	319.20	6,089.2	975.6	-501.6	1,096.8	0.06	0.00	
6,298.0	2.80	307.50	6,184.1	979.0	-505.1	1,101.5	0.77	-0.42	

Cathedral Energy Services

Survey Report

Company:	EnCana Oil & Gas (USA) Inc	Local Co-ordinate Reference:	Well NP EF02D G29 595
Project:	North Piceance	TVD Reference:	EF02D @ 6118.0ft (Patterson 176)
Site:	G29 595 Pad	MD Reference:	EF02D @ 6118.0ft (Patterson 176)
Well:	NP EF02D G29 595	North Reference:	True
Wellbore:	DD	Survey Calculation Method:	Minimum Curvature
Design:	DD	Database:	EDM 2003.16 US Multi User Db

Survey									
Measured Depth (ft)	Inclination (°)	Azimuth (°)	Vertical Depth (ft)	+N/-S (ft)	+E/-W (ft)	Vertical Section (ft)	Dogleg Rate (°/100ft)	Build Rate (°/100ft)	Formations / Comments
6,393.0	2.70	304.60	6,278.9	981.7	-508.8	1,105.6	0.18	-0.11	
6,488.0	1.80	276.20	6,373.9	983.1	-512.2	1,108.4	1.48	-0.95	
6,584.0	2.10	273.70	6,469.8	983.4	-515.4	1,110.2	0.32	0.31	
6,679.0	2.20	262.10	6,564.8	983.2	-518.9	1,111.8	0.47	0.11	
6,774.0	1.90	249.60	6,659.7	982.4	-522.2	1,112.6	0.56	-0.32	
6,869.0	1.30	246.20	6,754.7	981.5	-524.7	1,112.9	0.64	-0.63	
6,965.0	1.30	251.50	6,850.6	980.7	-526.7	1,113.2	0.13	0.00	
7,060.0	1.10	254.30	6,945.6	980.1	-528.6	1,113.6	0.22	-0.21	
7,155.0	1.40	269.20	7,040.6	979.8	-530.7	1,114.3	0.46	0.32	
7,250.0	1.80	263.40	7,135.6	979.6	-533.3	1,115.4	0.45	0.42	
7,353.0	1.80	254.90	7,238.5	979.0	-536.5	1,116.3	0.26	0.00	
7,448.0	1.80	249.40	7,333.5	978.1	-539.3	1,116.9	0.18	0.00	
7,543.0	2.80	170.10	7,428.4	975.3	-540.3	1,114.8	3.19	1.05	
7,638.0	2.70	174.00	7,523.3	970.8	-539.7	1,110.6	0.22	-0.11	
7,733.0	2.20	178.80	7,618.2	966.7	-539.4	1,106.9	0.57	-0.53	
7,828.0	2.20	182.70	7,713.1	963.1	-539.5	1,103.7	0.16	0.00	
7,923.0	2.20	186.00	7,808.1	959.5	-539.7	1,100.6	0.13	0.00	
8,018.0	2.00	187.20	7,903.0	956.0	-540.1	1,097.7	0.22	-0.21	
8,113.0	2.00	200.40	7,997.9	952.8	-540.9	1,095.3	0.48	0.00	
8,209.0	2.30	206.30	8,093.9	949.5	-542.3	1,093.1	0.39	0.31	
8,302.0	2.40	210.90	8,186.8	946.2	-544.2	1,091.0	0.23	0.11	
8,399.0	2.80	210.00	8,283.7	942.4	-546.4	1,088.7	0.41	0.41	
8,494.0	1.80	244.50	8,378.6	939.7	-548.9	1,087.5	1.75	-1.05	
8,589.0	2.00	236.70	8,473.6	938.2	-551.6	1,087.4	0.34	0.21	
8,684.0	2.20	236.60	8,568.5	936.3	-554.5	1,087.1	0.21	0.21	
8,779.0	2.10	237.00	8,663.4	934.3	-557.5	1,086.8	0.11	-0.11	
8,874.0	1.90	228.00	8,758.4	932.3	-560.2	1,086.3	0.39	-0.21	
8,969.0	1.90	222.10	8,853.3	930.1	-562.4	1,085.4	0.21	0.00	
9,064.0	1.40	253.20	8,948.3	928.6	-564.6	1,085.1	1.06	-0.53	
9,159.0	2.00	301.30	9,043.3	929.1	-567.1	1,086.7	1.57	0.63	
9,254.0	2.20	297.30	9,138.2	930.8	-570.1	1,089.7	0.26	0.21	
9,349.0	2.30	273.30	9,233.1	931.7	-573.6	1,092.1	0.99	0.11	
9,444.0	2.50	259.70	9,328.0	931.5	-577.6	1,093.8	0.63	0.21	
9,539.0	3.10	258.60	9,422.9	930.6	-582.1	1,095.2	0.63	0.63	
9,654.0	3.30	258.20	9,537.7	929.3	-588.4	1,097.0	0.17	0.17	Last DP survey @ 9654' MD

Cathedral Energy Services

Survey Report

Company: EnCana Oil & Gas (USA) Inc	Local Co-ordinate Reference: Well NP EF02D G29 595
Project: North Piceance	TVD Reference: EF02D @ 6118.0ft (Patterson 176)
Site: G29 595 Pad	MD Reference: EF02D @ 6118.0ft (Patterson 176)
Well: NP EF02D G29 595	North Reference: True
Wellbore: DD	Survey Calculation Method: Minimum Curvature
Design: DD	Database: EDM 2003.16 US Multi User Db

Targets									
Target Name	Dip Angle	Dip Dir.	TVD	+N/-S	+E/-W	Northing	Easting	Latitude	Longitude
- hit/miss target	(°)	(°)	(ft)	(ft)	(ft)	(ft)	(ft)		
- Shape									
EF02D G29 595 TGT 2 - survey misses by 95.4ft at 9654.0ft MD (9537.7 TVD, 929.3 N, -588.4 E) - Rectangle (sides W100.0 H200.0 D0.0)	0.00	0.00	9,588.0	974.3	-521.0	1,649,572.92	2,274,179.38	39° 35' 19.03 N	108° 4' 32.66 W
EF02D G29 595 TOG - survey misses by 27.4ft at 6002.8ft MD (5889.3 TVD, 966.8 N, -494.7 E) - Rectangle (sides W100.0 H200.0 D300.0)	0.00	0.00	5,888.0	974.3	-521.0	1,649,572.92	2,274,179.38	39° 35' 19.03 N	108° 4' 32.66 W
EF02D G29 595 TGT - survey misses by 9.0ft at 6501.8ft MD (6387.7 TVD, 983.2 N, -512.6 E) - Point	0.00	0.00	6,388.0	984.3	-503.7	1,649,582.43	2,274,196.96	39° 35' 19.13 N	108° 4' 32.43 W
EF02D G29 595 BHL - survey misses by 95.4ft at 9654.0ft MD (9537.7 TVD, 929.3 N, -588.4 E) - Rectangle (sides W30.0 H50.0 D0.0)	0.00	0.00	9,588.0	974.3	-521.0	1,649,572.97	2,274,179.40	39° 35' 19.03 N	108° 4' 32.66 W

Survey Annotations					
Measured Depth	Vertical Depth	Local Coordinates		Comment	
(ft)	(ft)	+N/-S (ft)	+E/-W (ft)		
9,654.0	9,537.7	929.3	-588.4	Last DP survey @ 9654' MD	

Checked By: _____ Approved By: _____ Date: _____