



Great Western Operating  
Company, LLC  
1801 Broadway, Suite 500  
Denver, CO 80202

303.398.0302  
866.742.1784 Fax  
info@gwogco.com  
www.gwogco.com

---

June 16, 2017

Colorado Oil and Gas Conservation Commission  
1120 Lincoln Street, Suite 801  
Denver, CO 80203

**RE: Proposed Wellbore Spacing Unit**  
Raindance FC 26-192HC  
Codell New Drill  
NENE Sec. 30, Township 6N, Range 67W  
Weld County, Colorado

Dear Director Lepore,

Great Western Operating Company, LLC (Great Western) is planning to drill the above captioned well in accordance with the provisions of Colorado Oil and Gas Conservation Commission (COGCC) Rule 318A.e.

Great Western's proposed wellbore spacing unit consists of:

Township 6 North, Range 67 West (Weld County):  
Section 30: S2NE4 & N2SE4 & W2

Township 6 North, Range 68 West (Larimer County):  
Section 26: S2NE4 & N2SE4  
Section 25: S2N2 & N2S2

Total Acres: 949

The 30 day notification time period has passed and we have not yet received any objections to such well locations or proposed spacing unit, therefore Great Western hereby requests the Director to approve the above mentioned well. Great Western respectfully requests the COGCC review the enclosed map illustrating the proposed wellbore spacing unit.

Respectfully,

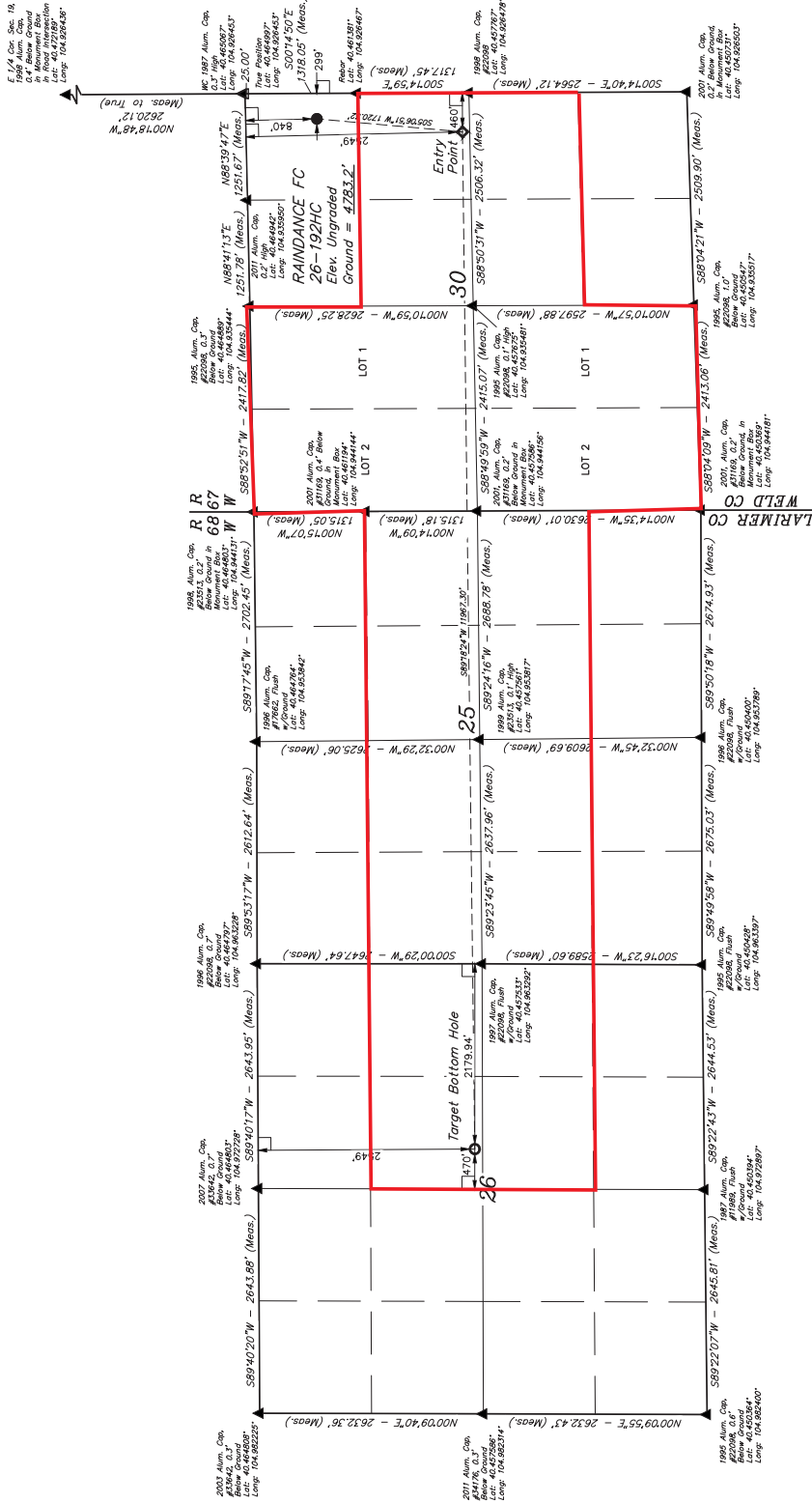
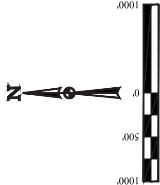
*Christi Ng*

**Christi Ng**  
Senior Regulatory Analyst  
Great Western Operating Company, LLC

T6N, R67W, 6th P.M.

GREAT WESTERN OPERATING COMPANY  
RAINDANCE FC 26-192HC  
NE 1/4 NE 1/4, SECTION 30, T6N, R67W, 6th P.M.  
WELD COUNTY, COLORADO

UNITAH  
Basis of Bearings  
Basis of Elevation  
USGS COOPERATIVE BASE NETWORK CONTROL STATION  
DESIGNATION "VERMILYEA". NGS DATA SHEET LISTS THE  
NAD 83 ELEVATION AS BEING 5029 FEET.



LEGEND:

- 1" = 90' SYMBOL
- PROPOSED WELLHEAD.
- TARGET BOTTOM HOLE.
- SECTION CORNERS LOCATED (NAD 83)
- SECTION CORNERS RE-ESTABLISHED (Not Set on Ground.) (NAD 83)

POOP = 1.5	
NAD SURFACE LOCATION	NAD (ENTRY POINT)
2001 Alum. Cap. #21168, 0.7' High, Elev. 40,450.87', Lat: 40.450847, Long: 104.925007	2001 Alum. Cap. #21168, 0.7' High, Elev. 40,450.87', Lat: 40.450847, Long: 104.925007
1995 Alum. Cap. #22088, 0.7' High, Elev. 40,450.87', Lat: 40.450847, Long: 104.925007	1995 Alum. Cap. #22088, 0.7' High, Elev. 40,450.87', Lat: 40.450847, Long: 104.925007
2001 Alum. Cap. #21168, 0.7' High, Elev. 40,450.87', Lat: 40.450847, Long: 104.925007	2001 Alum. Cap. #21168, 0.7' High, Elev. 40,450.87', Lat: 40.450847, Long: 104.925007
1995 Alum. Cap. #22088, 0.7' High, Elev. 40,450.87', Lat: 40.450847, Long: 104.925007	1995 Alum. Cap. #22088, 0.7' High, Elev. 40,450.87', Lat: 40.450847, Long: 104.925007

UNITAH  
Basis of Bearings  
Basis of Elevation  
USGS COOPERATIVE BASE NETWORK CONTROL STATION  
DESIGNATION "VERMILYEA". NGS DATA SHEET LISTS THE  
NAD 83 ELEVATION AS BEING 5029 FEET.

UNITAH  
Basis of Bearings  
Basis of Elevation  
USGS COOPERATIVE BASE NETWORK CONTROL STATION  
DESIGNATION "VERMILYEA". NGS DATA SHEET LISTS THE  
NAD 83 ELEVATION AS BEING 5029 FEET.

UNITAH  
Basis of Bearings  
Basis of Elevation  
USGS COOPERATIVE BASE NETWORK CONTROL STATION  
DESIGNATION "VERMILYEA". NGS DATA SHEET LISTS THE  
NAD 83 ELEVATION AS BEING 5029 FEET.

UNITAH  
Basis of Bearings  
Basis of Elevation  
USGS COOPERATIVE BASE NETWORK CONTROL STATION  
DESIGNATION "VERMILYEA". NGS DATA SHEET LISTS THE  
NAD 83 ELEVATION AS BEING 5029 FEET.

UNITAH  
Basis of Bearings  
Basis of Elevation  
USGS COOPERATIVE BASE NETWORK CONTROL STATION  
DESIGNATION "VERMILYEA". NGS DATA SHEET LISTS THE  
NAD 83 ELEVATION AS BEING 5029 FEET.

UNITAH  
Basis of Bearings  
Basis of Elevation  
USGS COOPERATIVE BASE NETWORK CONTROL STATION  
DESIGNATION "VERMILYEA". NGS DATA SHEET LISTS THE  
NAD 83 ELEVATION AS BEING 5029 FEET.



UNITAH  
Basis of Bearings  
Basis of Elevation  
USGS COOPERATIVE BASE NETWORK CONTROL STATION  
DESIGNATION "VERMILYEA". NGS DATA SHEET LISTS THE  
NAD 83 ELEVATION AS BEING 5029 FEET.

UNITAH  
Basis of Bearings  
Basis of Elevation  
USGS COOPERATIVE BASE NETWORK CONTROL STATION  
DESIGNATION "VERMILYEA". NGS DATA SHEET LISTS THE  
NAD 83 ELEVATION AS BEING 5029 FEET.

UNITAH  
Basis of Bearings  
Basis of Elevation  
USGS COOPERATIVE BASE NETWORK CONTROL STATION  
DESIGNATION "VERMILYEA". NGS DATA SHEET LISTS THE  
NAD 83 ELEVATION AS BEING 5029 FEET.

UNITAH  
Basis of Bearings  
Basis of Elevation  
USGS COOPERATIVE BASE NETWORK CONTROL STATION  
DESIGNATION "VERMILYEA". NGS DATA SHEET LISTS THE  
NAD 83 ELEVATION AS BEING 5029 FEET.

UNITAH  
Basis of Bearings  
Basis of Elevation  
USGS COOPERATIVE BASE NETWORK CONTROL STATION  
DESIGNATION "VERMILYEA". NGS DATA SHEET LISTS THE  
NAD 83 ELEVATION AS BEING 5029 FEET.

UNITAH  
Basis of Bearings  
Basis of Elevation  
USGS COOPERATIVE BASE NETWORK CONTROL STATION  
DESIGNATION "VERMILYEA". NGS DATA SHEET LISTS THE  
NAD 83 ELEVATION AS BEING 5029 FEET.