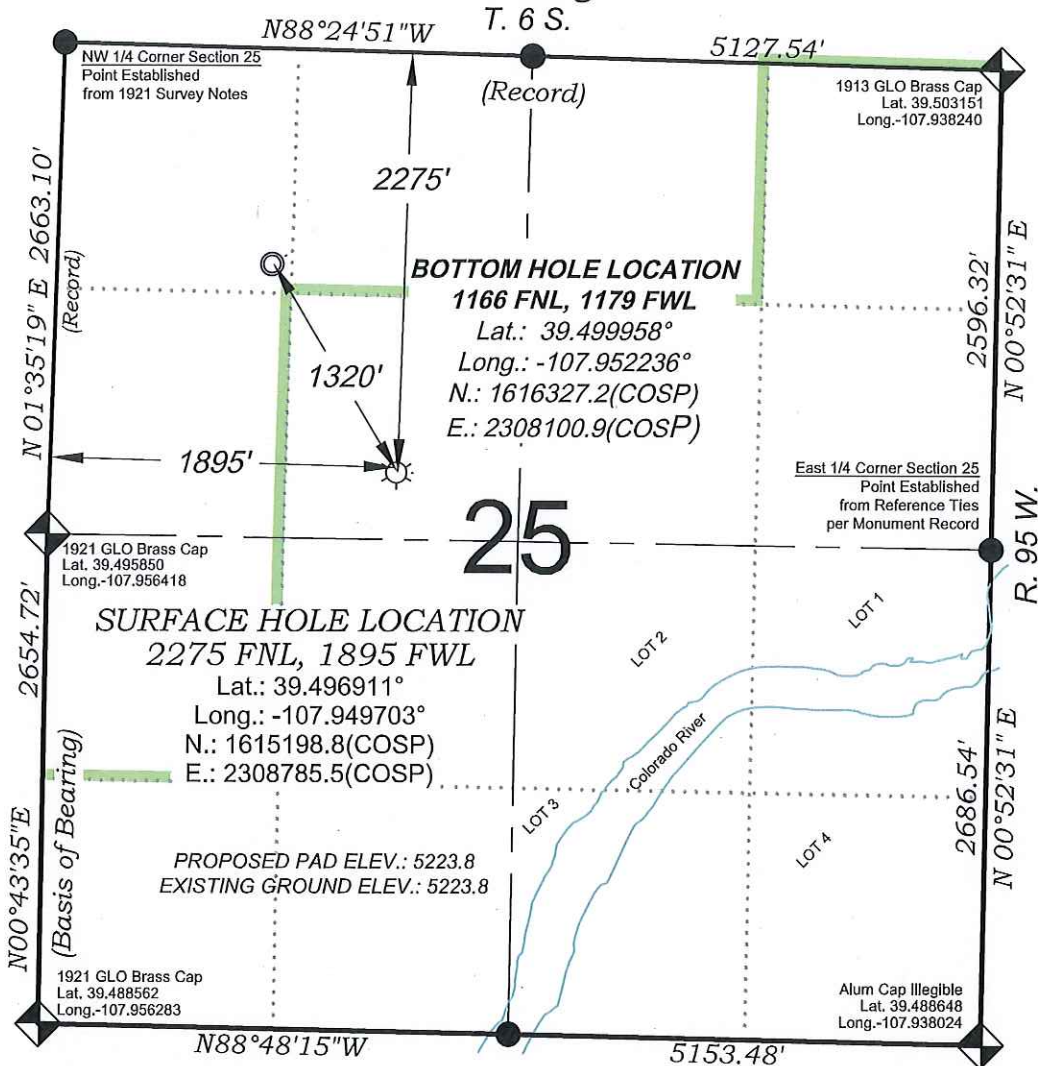
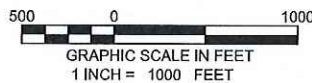


Tri State Trucking PA 511-25



SEE CONSTRUCTION LAYOUT PLAT
FOR VISIBLE IMPROVEMENTS
WITHIN 500' OF THIS LOCATION



SURVEYORS STATEMENT

I, MICHAEL J. LANGHORNE, A REGISTERED LAND SURVEYOR IN THE STATE OF COLORADO DO HEREBY CERTIFY THAT THE SURVEY SHOWN HEREON WAS PREPARED UNDER MY DIRECT SUPERVISION AND HAS BEEN STAKED ON THE GROUND AS SHOWN ON THE PLAT AND CHECKING THAT THIS MAP IS A TRUE REPRESENTATION THEREOF.

Michael J. Langhorne
36572

MICHAEL J. LANGHORNE, COLORADO REGISTRATION NO. 36572
FOR AND ON BEHALF OF
BOOKCLIFF SURVEY SERVICES, INC.

REFERENCES

- 1) Resurvey and Extension Survey T. 6 S., R. 95 W., 6th P.M. (GLO Plats)
- 2) U.S.G.S. QUAD: RULISON and ANVIL POINTS, CO

136 East Third Street
Rifle, Colorado 81650
Ph. (970) 625-2720
Fax (970) 625-2773



BOOKCLIFF
Survey Services, Inc.

SCALE: 1" = 1000'
DATE: 4/12/17
PLAT: 1 of 1
PROJECT: TEP Valley
DFT: WK

- LEGEND -

FIELD LOCATED SECTION
MONUMENTS AS DESCRIBED

FIELD SURVEYED
WELL LOCATION

CALCULATED BOTTOM
HOLE LOCATION

CALCULATED SECTION
CORNER LOCATION

NOTES

- 1) ELEVATIONS BASED ON N.A.V.D. 1988 PUBLISHED COORDINATES.
- 2) LATITUDES AND LONGITUDES ARE BASE ON NAD 83, PUBLISHED COORDINATES
- 3) STATE PLANE COORDINATES ARE BASED ON COLORADO CENTRAL ZONE, U.S. SURVEY FEET.
- 4) ELEVATION MASK SET TO 15"
- 5) GPS OPERATOR J. KIRKPATRICK, OBSERVED A PDOP 1.0 ON SURVEY POINT NUMBER 153.
- 6) SURFACE AND BOTTOM HOLE LOCATIONS ARE MEASURED 90° FROM SECTION LINES.

Construction Plan Prepared for:



TEP Rocky Mountain LLC

SE1/4 NW1/4, SECTION 25
T. 6 S., R. 95 W. of the 6th. P.M.
GARFIELD COUNTY, COLORADO