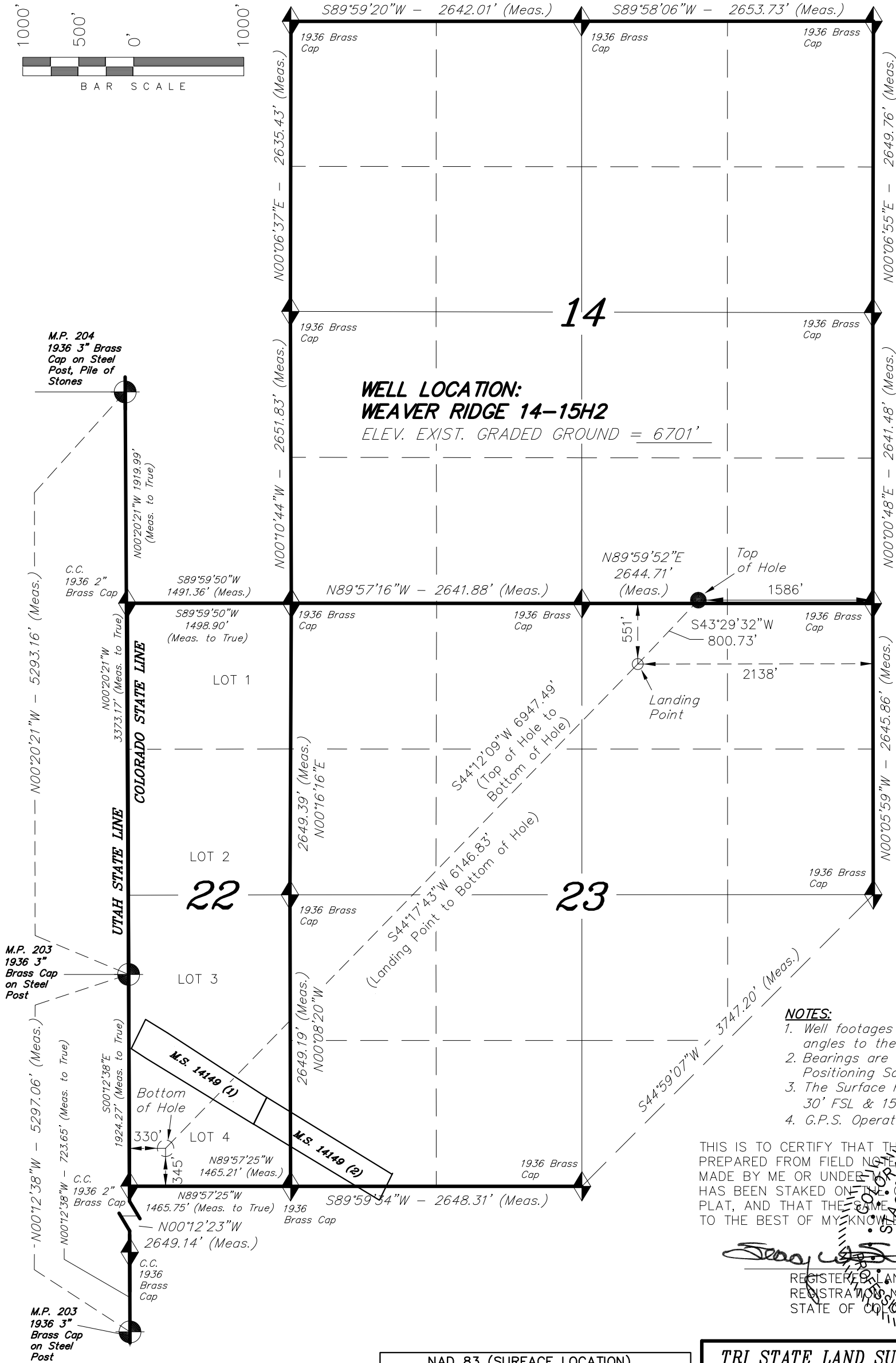
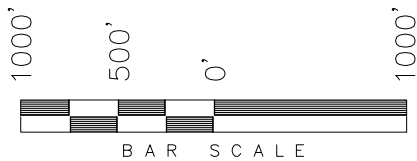


WELL LOCATION, WEAVER RIDGE 14-15H2,  
LOCATED AS SHOWN IN THE SW 1/4 SE  
1/4 OF SECTION 14, T1S, R104W, 6th  
P.M. RIO BLANCO COUNTY, COLORADO.

TARGET BOTTOM HOLE, WEAVER RIDGE  
14-15H2, LOCATED AS SHOWN IN LOT 4  
OF SECTION 22, T1S, R104W, 6th P.M. RIO  
BLANCO COUNTY, COLORADO.

T1S, R104W, 6th P.M.



- NOTES:**
- Well footages are measured at right angles to the Section Lines.
  - Bearings are based on Global Positioning Satellite observations.
  - The Surface Hole footages are 30' FSL & 1586' FEL.
  - G.P.S. Operator: G.Olsen, (PDOP) = 1.028

THIS IS TO CERTIFY THAT THE ABOVE PLAT WAS PREPARED FROM FIELD NOTES AND SURVEYS MADE BY ME OR UNDER MY SUPERVISION. THE LOCATION HAS BEEN STAKED ON THE GROUND AS SHOWN ON THE PLAT, AND THAT THE SAME ARE TRUE AND CORRECT TO THE BEST OF MY KNOWLEDGE AND BELIEF.

*[Signature]*  
REGISTERED LAND SURVEYOR  
REGISTRATION NO. 30125  
STATE OF COLORADO

TRI STATE LAND SURVEYING & CONSULTING

180 NORTH VERNAL AVE. - VERNAL, UTAH 84078  
(435) 781-2501

DATE SURVEYED: 09-25-13	SURVEYED BY: G.D.O.
DATE DRAWN: 09-24-13	DRAWN BY: L.C.S.
REVISED: 06-20-17 F.T.M.	SCALE: 1" = 1000'

NAD 83 (SURFACE LOCATION)
LATITUDE = 39°57'14.59" (39.954053°)
LONGITUDE = 109°01'55.99" (109.032219°)
NAD 83 (LANDING POINT)
LATITUDE = 39°57'08.84" (39.952455°)
LONGITUDE = 109°02'03.10" (109.034194°)
NAD 83 (BOTTOM HOLE LOCATION)
LATITUDE = 39°56'25.37" (39.940381°)
LONGITUDE = 109°02'58.19" (109.049498°)

◆ = SECTION CORNERS LOCATED

BASIS OF ELEV; U.S.G.S. 7-1/2  
min QUAD (WEAVER RIDGE)