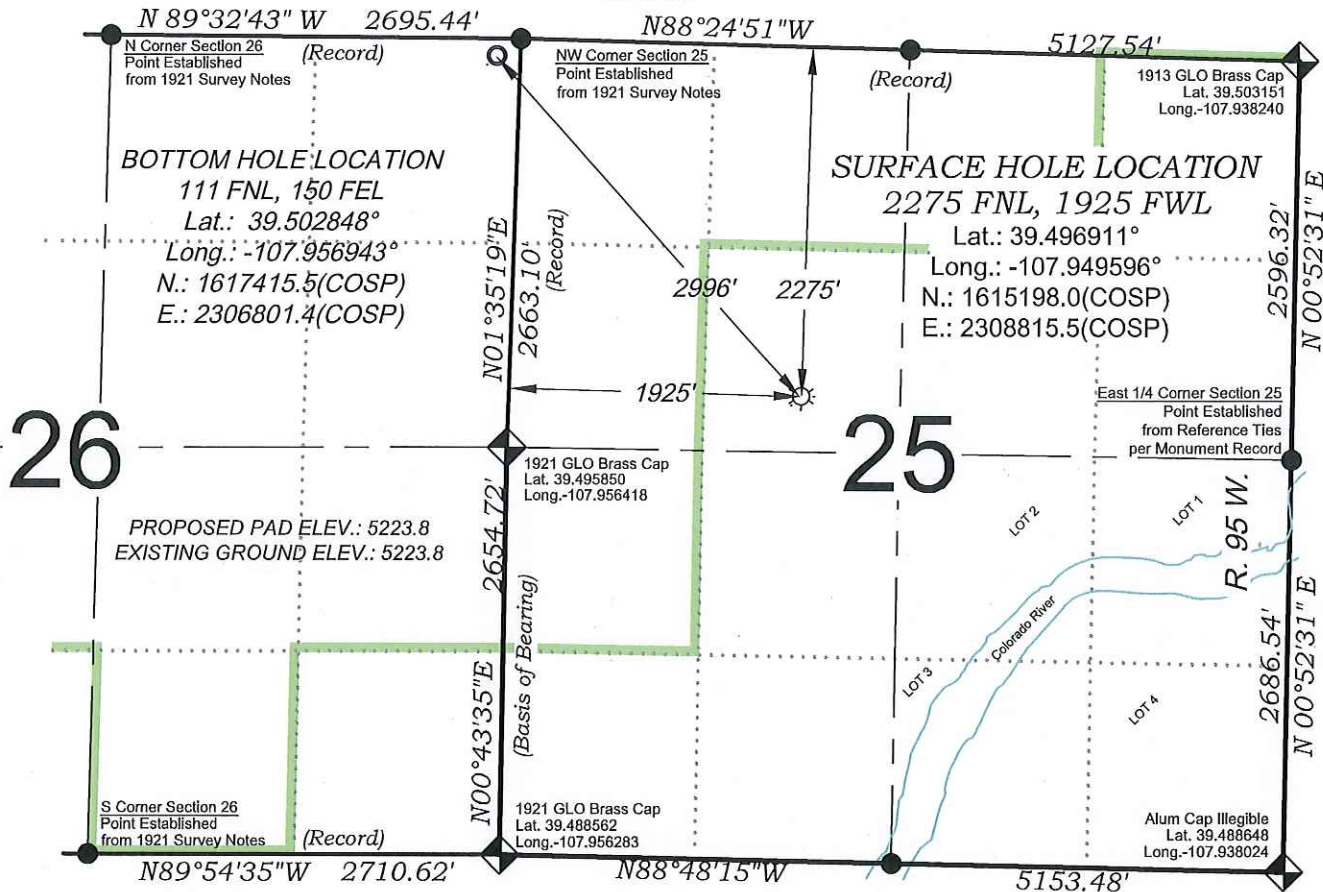
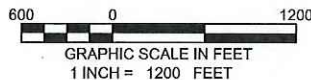


# Tri State Trucking PA 41-26 T. 6 S.



SEE CONSTRUCTION LAYOUT PLAT  
FOR VISIBLE IMPROVEMENTS  
WITHIN 500' OF THIS LOCATION



## SURVEYORS STATEMENT

I, MICHAEL J. LANGHORNE, A REGISTERED LAND SURVEYOR IN THE STATE OF COLORADO DO HEREBY CERTIFY THAT THE SURVEY SHOWN HEREON WAS PREPARED UNDER MY DIRECT SUPERVISION AND HAS BEEN STAKED ON THE GROUND AS SHOWN ON THE PLAT AND CHECKING THAT THIS MAP IS A TRUE REPRESENTATION THEREOF.

*Michael J. Langhorne*  
 MICHAEL J. LANGHORNE, COLORADO REGISTRATION NO. 36572  
 FOR AND ON BEHALF OF  
 BOOKCLIFF SURVEY SERVICES, INC.

## - LEGEND -

FIELD LOCATED SECTION MONUMENTS AS DESCRIBED

FIELD SURVEYED WELL LOCATION

CALCULATED BOTTOM HOLE LOCATION

CALCULATED SECTION CORNER LOCATION

## NOTES

- 1) ELEVATIONS BASED ON N.A.V.D. 1988 PUBLISHED COORDINATES.
- 2) LATITUDES AND LONGITUDES ARE BASE ON NAD 83, PUBLISHED COORDINATES
- 3) STATE PLANE COORDINATES ARE BASED ON COLORADO CENTRAL ZONE, U.S. SURVEY FEET.
- 4) ELEVATION MASK SET TO 15"
- 5) GPS OPERATOR J. KIRKPATRICK, OBSERVED A PDOP 1.0 ON SURVEY POINT NUMBER 153.
- 6) SURFACE AND BOTTOM HOLE LOCATIONS ARE MEASURED 90° FROM SECTION LINES.

## REFERENCES

- 1) Resurvey and Extension Survey T. 6 S., R. 95 W., 6th P.M (GLO Plats)  
2) U.S.G.S. QUAD: RULISON and ANVIL POINTS, CO

136 East Third Street  
Rifle, Colorado 81650  
Ph. (970) 625-2720  
Fax (970) 625-2773



**BOOKCLIFF**  
Survey Services, Inc.

SCALE: 1" = 1200'  
DATE: 4/12/17  
PLAT: 1 of 1  
PROJECT: TEP Valley  
DFT: WK

## Construction Plan Prepared for:



TEP Rocky Mountain LLC

SE1/4 NW1/4, SECTION 25  
T. 6 S., R. 95 W. of the 6th. P.M.  
GARFIELD COUNTY, COLORADO