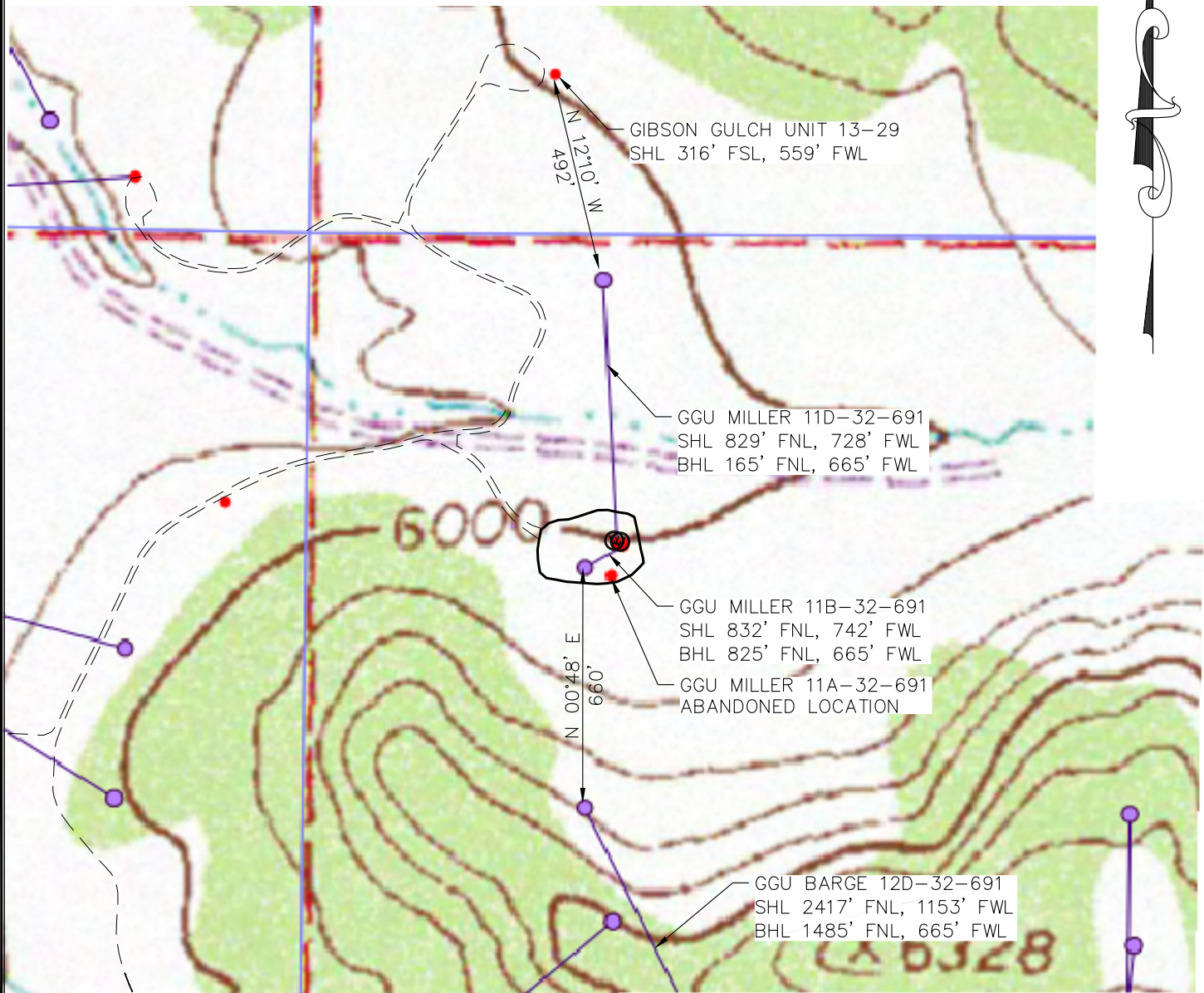


GGU MILLER 11D
NW1/4NW 1/4 SECTION 32, T. 6 S., R. 91 W., 6TH P.M.
GARFIELD COUNTY, COLORADO



WELL NAME	SURFACE HOLE LOCATION	BOTTOM HOLE LOCATION
GIBSON GULCH UNIT 13-29	N 39.492362 W 107.585138	
GGU MILLER 11B-32-691	N 39.489221 W 107.584435	N 39.489236 W 107.584711
GGU MILLER 11D-32-691	N 39.489227 W 107.584487	N 39.491048 W 107.584732
GGU BARGE 12D-32-691	N 39.484893 W 107.582932	N 39.487424 W 107.584690

NOTES:

- 1) SURFACE HOLE LOCATIONS ARE BASED ON AS-BUILT SURVEYS
- 2) BOTTOM HOLE LOCATIONS ARE BASED ON COGCC RECORD INFORMATION
- 3) LATs AND LONGs ARE NAD 83 COLORADO STATE PLANE CENTRAL ZONE DECIMAL DEGREE FORMAT



ECLIPSE
Surveying, Inc.
 1874 Six Lazy K Rd., New Castle, CO, 81647
 (970) 876-5939

REV. DATE: _____
 SCALE: 1" = 400'
 DATE: 06/21/17
 SHEET: 1 OF 1
 PROJECT: MILLER 11D
 DFT: JAK



GGU MILLER 11D
MULTI-WELL PLAN