

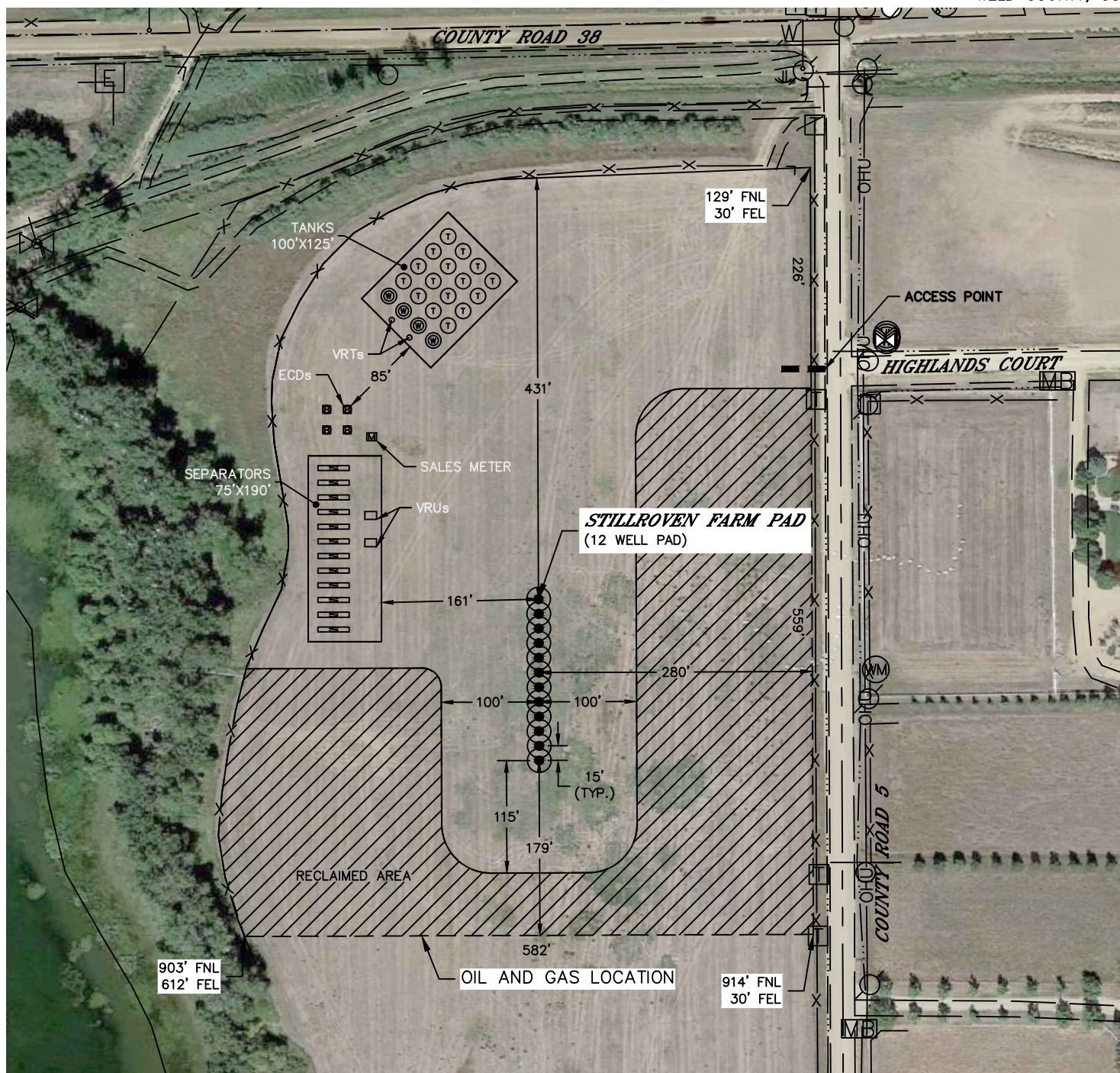


Lat40°, Inc. 6250 W. 10th Street, Unit 2, Greeley, CO 970-515-5294

PROPOSED SCALED FACILITY DRAWING

STILLROVEN FARM PAD

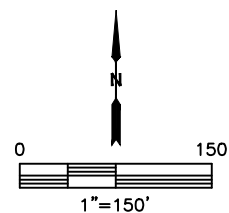
SECTION: 5
TOWNSHIP: 3N
RANGE: 68W
6TH. P.M.
WELD COUNTY, CO



LEGEND

- PROPOSED WELL HEAD
- ⊙ TANK BATTERY
- ⊙ WATER TANK
- ⊙ WATER VAULT
- ⊙ SEPARATOR
- ⊙ ECD
- ⊙ METER
- VRU- VAPOR RECOVERY UNIT

TOTAL DISTURBED AREA OF LOCATION: ±9.8 ACRES
TOTAL SIZE OF LOCATION AFTER RECLAMATION: ±5.8 ACRES



DATE: 6/26/2017
PROJECT#: 2017042