



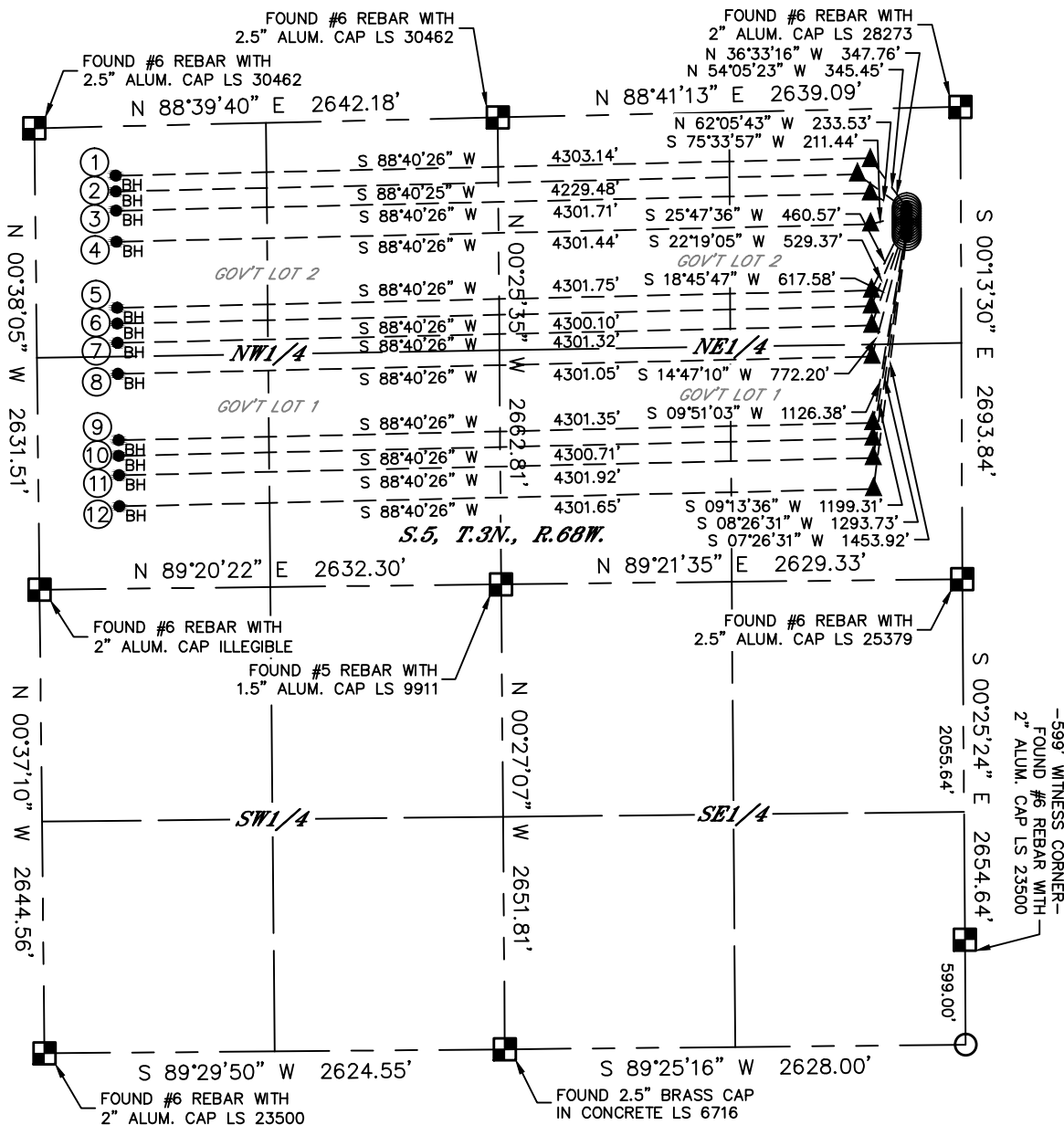
Lat40°, Inc. 6250 W. 10th Street, Unit 2, Greeley, CO 970-515-5294

MULTI-WELL PLAN

STILLROVEN FARM PAD

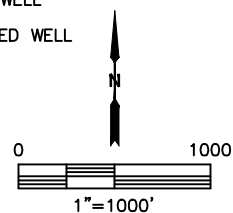
THIS MAP DOES NOT REPRESENT A BOUNDARY SURVEY

SECTION: 5
TOWNSHIP: 3N
RANGE: 68W
6TH. P.M.
WELD COUNTY, CO



LEGEND

- = ALIQUOT MONUMENT AS DESCRIBED
- = CALCULATED POSITION
- = SURFACE HOLE LOCATION (SHL)
- ▲ = ENTRY POINT LOCATION (EP)
- = BOTTOM HOLE LOCATION (BHL)
- ⊙ = EXISTING WELL
- ⊙ = ABANDONED WELL



#	WELL NAME	BHL	FOOTAGE	BHL LAT°	BHL LONG°	BHL S-T-R
1	STILLROVEN FARM 1	281	FNL	460	FWL	40.26131 -105.03495 5-3-68
2	STILLROVEN FARM 2	371	FNL	460	FWL	40.26106 -105.03495 5-3-68
3	STILLROVEN FARM 3	481	FNL	460	FWL	40.26076 -105.03495 5-3-68
4	STILLROVEN FARM 4	658	FNL	460	FWL	40.26027 -105.03495 5-3-68
5	STILLROVEN FARM 5	1035	FNL	460	FWL	40.25924 -105.03494 5-3-68
6	STILLROVEN FARM 6	1125	FNL	460	FWL	40.25899 -105.03494 5-3-68
7	STILLROVEN FARM 7	1235	FNL	460	FWL	40.25869 -105.03493 5-3-68
8	STILLROVEN FARM 8	1412	FNL	460	FWL	40.25820 -105.03493 5-3-68
9	STILLROVEN FARM 9	1790	FNL	460	FWL	40.25717 -105.03492 5-3-68
10	STILLROVEN FARM 10	1879	FNL	460	FWL	40.25692 -105.03492 5-3-68
11	STILLROVEN FARM 11	1990	FNL	460	FWL	40.25662 -105.03492 5-3-68
12	STILLROVEN FARM 12	2167	FNL	460	FWL	40.25613 -105.03491 5-3-68



Lat40°, Inc. 6250 W. 10th Street, Unit 2, Greeley, CO 970-515-5294

MULTI-WELL PLAN

STILLROVEN FARM PAD

SECTION: 5
TOWNSHIP: 3N
RANGE: 68W
6TH. P.M.
WELD COUNTY, CO



#	WELL NAME	SHL FOOTAGE				SHL LAT °	SHL LONG °	SHL PDOP	SHL ELEV (FT.)	SHL 1/4/1/4	SHLS-T-R
1	STILLROVEN FARM 1	565	FNL	310	FEL	40.26075	-105.01881	2.1	5074	NENE	5-3-68
2	STILLROVEN FARM 2	580	FNL	310	FEL	40.26071	-105.01881	2.1	5074	NENE	5-3-68
3	STILLROVEN FARM 3	595	FNL	310	FEL	40.26067	-105.01881	2.1	5074	NENE	5-3-68
4	STILLROVEN FARM 4	610	FNL	310	FEL	40.26062	-105.01881	2.1	5074	NENE	5-3-68
5	STILLROVEN FARM 5	625	FNL	310	FEL	40.26058	-105.01881	2.1	5075	NENE	5-3-68
6	STILLROVEN FARM 6	640	FNL	310	FEL	40.26054	-105.01881	2.1	5075	NENE	5-3-68
7	STILLROVEN FARM 7	655	FNL	310	FEL	40.26050	-105.01881	2.2	5075	NENE	5-3-68
8	STILLROVEN FARM 8	670	FNL	310	FEL	40.26046	-105.01881	2.2	5075	NENE	5-3-68
9	STILLROVEN FARM 9	685	FNL	310	FEL	40.26042	-105.01881	2.2	5075	NENE	5-3-68
10	STILLROVEN FARM 10	700	FNL	310	FEL	40.26038	-105.01881	2.2	5075	NENE	5-3-68
11	STILLROVEN FARM 11	715	FNL	310	FEL	40.26034	-105.01881	2.2	5075	NENE	5-3-68
12	STILLROVEN FARM 12	730	FNL	310	FEL	40.26030	-105.01881	2.2	5075	NENE	5-3-68