

Burlington Resources

Location: COLORADO Slot: SLOT#01 STATE CHALLENGER 5-65 2-3 3BYH Lateral A
Field: ARAPAHOE COUNTY (NAD83/TN) Well: STATE CHALLENGER 5-65 2-3 3BYH Lateral A
Facility: SEC.0-TON-R0W Wellbore: STATE CHALLENGER 5-65 2-3 3BYH Lateral A PWB

Plot reference wellpath is STATE CHALLENGER 5-65 2-3 3BYH (REV-A.0) Lateral A PWB	Grid System: NAD83 / Lambert Colorado SP, Central Zone (502), US feet
True vertical depths are referenced to Rig on SLOT#01 STATE CHALLENGER 5-65 2-3 3BYH Lateral A (RT)	* = Wellpath was transformed from a different geodetic datum
Measured depths are referenced to Rig on SLOT#01 STATE CHALLENGER 5-65 2-3 3BYH Lateral A (RT)	North Reference: True north
Rig on SLOT#01 STATE CHALLENGER 5-65 2-3 3BYH Lateral A (RT) to Mean Sea Level: 5866 feet	Scale: True distance
Mean Sea Level to Mud line (At Slot: SLOT#01 STATE CHALLENGER 5-65 2-3 3BYH Lateral A): 0 feet	Depths are in feet
Coordinates are in feet referenced to Slot	Created by: adamkat on 2017-06-27
	Database: WA_DEN_Denver_Defn

Location Information

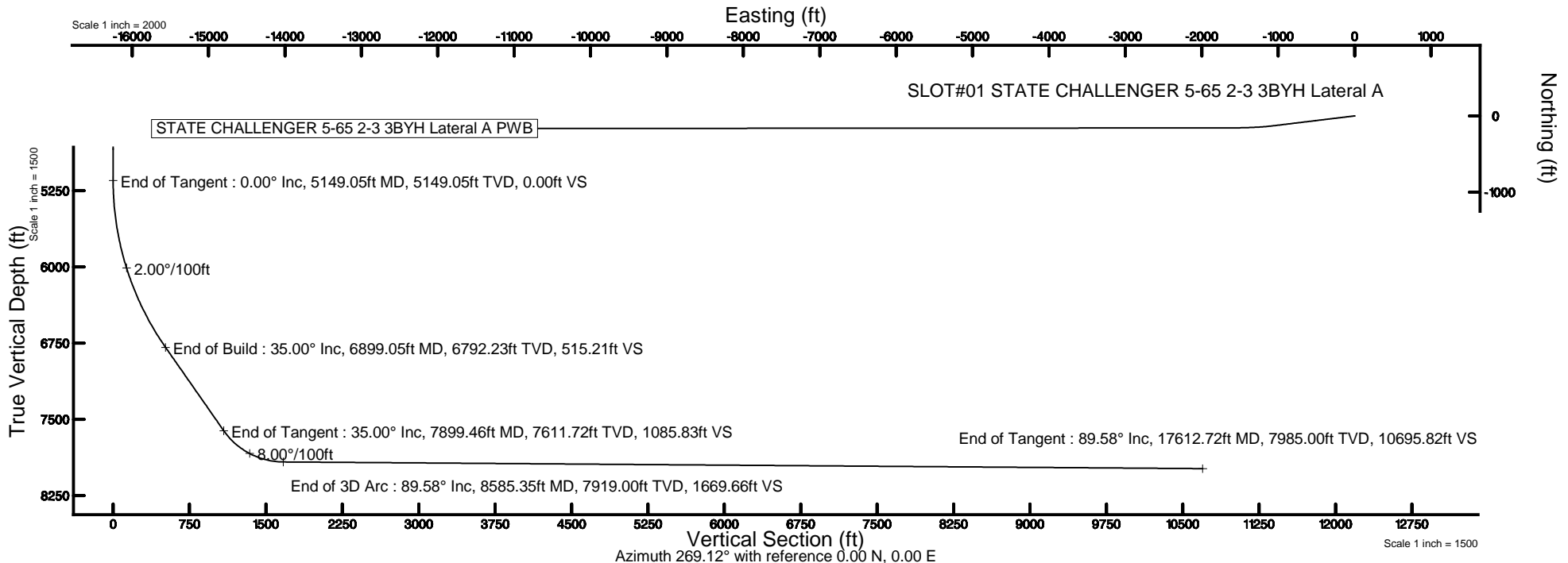
Facility Name			Grid East (US ft)	Grid North (US ft)	Latitude	Longitude
SEC.0-TON-R0W			3248259.691	1660139.022	39°38'33.250"N	104°37'06.320"W
Slot	Local N (ft)	Local E (ft)	Grid East (US ft)	Grid North (US ft)	Latitude	Longitude
SLOT#01 STATE CHALLENGER 5-65 2-3 3BYH Lateral A	0.00	0.00	3248259.691	1660139.022	39°38'33.250"N	104°37'06.320"W
Rig on SLOT#01 STATE CHALLENGER 5-65 2-3 3BYH Lateral A (RT) to Mud line (At Slot: SLOT#01 STATE CHALLENGER 5-65 2-3 3BYH Lateral A)					5866ft	
Mean Sea Level to Mud line (At Slot: SLOT#01 STATE CHALLENGER 5-65 2-3 3BYH Lateral A)					0ft	
Rig on SLOT#01 STATE CHALLENGER 5-65 2-3 3BYH Lateral A (RT) to Mean Sea Level					5866ft	

Bottom Hole Location

MD (ft)	Inc (°)	Az (°)	TVD (ft)	Local N (ft)	Local E (ft)	Grid East (US ft)	Grid North (US ft)	Latitude	Longitude
17612.72	89.581	269.956	7985.00	-164.69	-10694.55	3237567.47	1659870.57	39°38'31.600"N	104°39'23.030"W

Well Profile Data

Design Comment	MD (ft)	Inc (°)	Az (°)	TVD (ft)	Local N (ft)	Local E (ft)	DLS (°/100ft)	VS (ft)
Tie On	0.00	0.000	263.071	0.00	0.00	0.00	0.00	0.00
End of Tangent	5149.05	0.000	263.071	5149.05	0.00	0.00	0.00	0.00
End of Build	6899.05	35.000	263.071	6792.23	-62.50	-514.31	2.00	515.21
End of Tangent	7899.46	35.000	263.071	7611.72	-131.72	-1083.93	0.00	1085.83
End of 3D Arc	8585.35	89.581	269.956	7919.00	-157.73	-1667.43	8.00	1669.66
End of Tangent	17612.72	89.581	269.956	7985.00	-164.69	-10694.55	0.00	10695.82



REFERENCE WELLPATH IDENTIFICATION			
Operator	Burlington Resources	Slot	SLOT#01 STATE CHALLENGER 5-65 2-3 3BYH Lateral A
Area	COLORADO	Well	STATE CHALLENGER 5-65 2-3 3BYH Lateral A
Field	ARAPAHOE COUNTY (NAD83/TN)	Wellbore	STATE CHALLENGER 5-65 2-3 3BYH Lateral A PWB
Facility	SEC.0-T0N-R0W		

REPORT SETUP INFORMATION			
Projection System	NAD83 / Lambert Colorado SP, Central Zone (502), US feet	Software System	WellArchitect® 5.0
North Reference	True	User	Adamkat
Scale	0.999981	Report Generated	6/27/2017 at 7:37:40 AM
Convergence at slot	0.56° East	Database/Source file	WA_DEN_Denver_Defn/STATE_CHALLENGER_5-65_2-3_3BYH_REV-A.0_Lateral_A_PWP.xml

WELLPATH LOCATION						
	Local coordinates		Grid coordinates		Geographic coordinates	
	North[ft]	East[ft]	Easting[US ft]	Northing[US ft]	Latitude	Longitude
Slot Location	0.00	0.00	3248259.69	1660139.02	39°38'33.250"N	104°37'06.320"W
Facility Reference Pt			3248259.69	1660139.02	39°38'33.250"N	104°37'06.320"W
Field Reference Pt			3256721.09	1679994.75	39°41'48.650"N	104°35'15.610"W

WELLPATH DATUM			
Calculation method	Minimum curvature	Rig on SLOT#01 STATE CHALLENGER 5-65 2-3 3BYH Lateral A (RT) to Facility Vertical Datum	5866.00ft
Horizontal Reference Pt	Slot	Rig on SLOT#01 STATE CHALLENGER 5-65 2-3 3BYH Lateral A (RT) to Mean Sea Level	5866.00ft
Vertical Reference Pt	Rig on SLOT#01 STATE CHALLENGER 5-65 2-3 3BYH Lateral A (RT)	Rig on SLOT#01 STATE CHALLENGER 5-65 2-3 3BYH Lateral A (RT) to Mud Line at Slot (SLOT#01 STATE CHALLENGER 5-65 2-3 3BYH Lateral A)	5866.00ft
MD Reference Pt	Rig on SLOT#01 STATE CHALLENGER 5-65 2-3 3BYH Lateral A (RT)	Section Origin	N 0.00, E 0.00 ft
Field Vertical Reference	Mean Sea Level	Section Azimuth	269.12°

REFERENCE WELLPATH IDENTIFICATION			
Operator	Burlington Resources	Slot	SLOT#01 STATE CHALLENGER 5-65 2-3 3BYH Lateral A
Area	COLORADO	Well	STATE CHALLENGER 5-65 2-3 3BYH Lateral A
Field	ARAPAHOE COUNTY (NAD83/TN)	Wellbore	STATE CHALLENGER 5-65 2-3 3BYH Lateral A PWB
Facility	SEC.0-T0N-R0W		

WELLPATH DATA (182 stations) † = interpolated/extrapolated station										
MD [ft]	Inclination [°]	Azimuth [°]	TVD [ft]	Vert Sect [ft]	North [ft]	East [ft]	DLS [°/100ft]	Comments		
0.00	0.000	263.071	0.00	0.00	0.00	0.00	0.00	Tie On		
100.00†	0.000	263.071	100.00	0.00	0.00	0.00	0.00			
200.00†	0.000	263.071	200.00	0.00	0.00	0.00	0.00			
300.00†	0.000	263.071	300.00	0.00	0.00	0.00	0.00			
400.00†	0.000	263.071	400.00	0.00	0.00	0.00	0.00			
500.00†	0.000	263.071	500.00	0.00	0.00	0.00	0.00			
600.00†	0.000	263.071	600.00	0.00	0.00	0.00	0.00			
700.00†	0.000	263.071	700.00	0.00	0.00	0.00	0.00			
800.00†	0.000	263.071	800.00	0.00	0.00	0.00	0.00			
900.00†	0.000	263.071	900.00	0.00	0.00	0.00	0.00			
1000.00†	0.000	263.071	1000.00	0.00	0.00	0.00	0.00			
1100.00†	0.000	263.071	1100.00	0.00	0.00	0.00	0.00			
1200.00†	0.000	263.071	1200.00	0.00	0.00	0.00	0.00			
1300.00†	0.000	263.071	1300.00	0.00	0.00	0.00	0.00			
1400.00†	0.000	263.071	1400.00	0.00	0.00	0.00	0.00			
1500.00†	0.000	263.071	1500.00	0.00	0.00	0.00	0.00			
1600.00†	0.000	263.071	1600.00	0.00	0.00	0.00	0.00			
1700.00†	0.000	263.071	1700.00	0.00	0.00	0.00	0.00			
1800.00†	0.000	263.071	1800.00	0.00	0.00	0.00	0.00			
1900.00†	0.000	263.071	1900.00	0.00	0.00	0.00	0.00			
2000.00†	0.000	263.071	2000.00	0.00	0.00	0.00	0.00			
2100.00†	0.000	263.071	2100.00	0.00	0.00	0.00	0.00			
2200.00†	0.000	263.071	2200.00	0.00	0.00	0.00	0.00			
2300.00†	0.000	263.071	2300.00	0.00	0.00	0.00	0.00			
2400.00†	0.000	263.071	2400.00	0.00	0.00	0.00	0.00			
2500.00†	0.000	263.071	2500.00	0.00	0.00	0.00	0.00			
2600.00†	0.000	263.071	2600.00	0.00	0.00	0.00	0.00			
2700.00†	0.000	263.071	2700.00	0.00	0.00	0.00	0.00			
2800.00†	0.000	263.071	2800.00	0.00	0.00	0.00	0.00			
2900.00†	0.000	263.071	2900.00	0.00	0.00	0.00	0.00			

REFERENCE WELLPATH IDENTIFICATION

Operator	Burlington Resources	Slot	SLOT#01 STATE CHALLENGER 5-65 2-3 3BYH Lateral A
Area	COLORADO	Well	STATE CHALLENGER 5-65 2-3 3BYH Lateral A
Field	ARAPAHOE COUNTY (NAD83/TN)	Wellbore	STATE CHALLENGER 5-65 2-3 3BYH Lateral A PWB
Facility	SEC.0-T0N-R0W		

WELLPATH DATA (182 stations) † = interpolated/extrapolated station

MD [ft]	Inclination [°]	Azimuth [°]	TVD [ft]	Vert Sect [ft]	North [ft]	East [ft]	DLS [°/100ft]	Comments
3000.00†	0.000	263.071	3000.00	0.00	0.00	0.00	0.00	
3100.00†	0.000	263.071	3100.00	0.00	0.00	0.00	0.00	
3200.00†	0.000	263.071	3200.00	0.00	0.00	0.00	0.00	
3300.00†	0.000	263.071	3300.00	0.00	0.00	0.00	0.00	
3400.00†	0.000	263.071	3400.00	0.00	0.00	0.00	0.00	
3500.00†	0.000	263.071	3500.00	0.00	0.00	0.00	0.00	
3600.00†	0.000	263.071	3600.00	0.00	0.00	0.00	0.00	
3700.00†	0.000	263.071	3700.00	0.00	0.00	0.00	0.00	
3800.00†	0.000	263.071	3800.00	0.00	0.00	0.00	0.00	
3900.00†	0.000	263.071	3900.00	0.00	0.00	0.00	0.00	
4000.00†	0.000	263.071	4000.00	0.00	0.00	0.00	0.00	
4100.00†	0.000	263.071	4100.00	0.00	0.00	0.00	0.00	
4200.00†	0.000	263.071	4200.00	0.00	0.00	0.00	0.00	
4300.00†	0.000	263.071	4300.00	0.00	0.00	0.00	0.00	
4400.00†	0.000	263.071	4400.00	0.00	0.00	0.00	0.00	
4500.00†	0.000	263.071	4500.00	0.00	0.00	0.00	0.00	
4600.00†	0.000	263.071	4600.00	0.00	0.00	0.00	0.00	
4700.00†	0.000	263.071	4700.00	0.00	0.00	0.00	0.00	
4800.00†	0.000	263.071	4800.00	0.00	0.00	0.00	0.00	
4900.00†	0.000	263.071	4900.00	0.00	0.00	0.00	0.00	
5000.00†	0.000	263.071	5000.00	0.00	0.00	0.00	0.00	
5100.00†	0.000	263.071	5100.00	0.00	0.00	0.00	0.00	
5149.05	0.000	263.071	5149.05	0.00	0.00	0.00	0.00	End of Tangent
5200.00†	1.019	263.071	5200.00	0.45	-0.05	-0.45	2.00	
5300.00†	3.019	263.071	5299.93	3.95	-0.48	-3.95	2.00	
5400.00†	5.019	263.071	5399.68	10.92	-1.33	-10.90	2.00	
5500.00†	7.019	263.071	5499.12	21.35	-2.59	-21.31	2.00	
5600.00†	9.019	263.071	5598.14	35.22	-4.27	-35.16	2.00	
5700.00†	11.019	263.071	5696.61	52.52	-6.37	-52.43	2.00	
5800.00†	13.019	263.071	5794.41	73.23	-8.88	-73.10	2.00	

REFERENCE WELLPATH IDENTIFICATION

Operator	Burlington Resources	Slot	SLOT#01 STATE CHALLENGER 5-65 2-3 3BYH Lateral A
Area	COLORADO	Well	STATE CHALLENGER 5-65 2-3 3BYH Lateral A
Field	ARAPAHOE COUNTY (NAD83/TN)	Wellbore	STATE CHALLENGER 5-65 2-3 3BYH Lateral A PWB
Facility	SEC.0-T0N-R0W		

WELLPATH DATA (182 stations) † = interpolated/extrapolated station

MD [ft]	Inclination [°]	Azimuth [°]	TVD [ft]	Vert Sect [ft]	North [ft]	East [ft]	DLS [°/100ft]	Comments
5900.00†	15.019	263.071	5891.43	97.32	-11.81	-97.15	2.00	
6000.00†	17.019	263.071	5987.54	124.76	-15.13	-124.54	2.00	
6100.00†	19.019	263.071	6082.63	155.52	-18.87	-155.25	2.00	
6200.00†	21.019	263.071	6176.59	189.56	-22.99	-189.23	2.00	
6300.00†	23.019	263.071	6269.29	226.84	-27.52	-226.44	2.00	
6400.00†	25.019	263.071	6360.62	267.31	-32.43	-266.85	2.00	
6500.00†	27.019	263.071	6450.48	310.94	-37.72	-310.39	2.00	
6600.00†	29.019	263.071	6538.76	357.65	-43.38	-357.02	2.00	
6700.00†	31.019	263.071	6625.34	407.40	-49.42	-406.68	2.00	
6800.00†	33.019	263.071	6710.12	460.12	-55.82	-459.31	2.00	
6899.05	35.000	263.071	6792.23	515.21	-62.50	-514.31	2.00	End of Build
6900.00†	35.000	263.071	6793.00	515.75	-62.56	-514.85	0.00	
7000.00†	35.000	263.071	6874.92	572.79	-69.48	-571.79	0.00	
7100.00†	35.000	263.071	6956.83	629.83	-76.40	-628.73	0.00	
7200.00†	35.000	263.071	7038.75	686.87	-83.32	-685.67	0.00	
7300.00†	35.000	263.071	7120.66	743.91	-90.24	-742.60	0.00	
7400.00†	35.000	263.071	7202.58	800.94	-97.16	-799.54	0.00	
7500.00†	35.000	263.071	7284.49	857.98	-104.08	-856.48	0.00	
7600.00†	35.000	263.071	7366.41	915.02	-111.00	-913.42	0.00	
7700.00†	35.000	263.071	7448.33	972.06	-117.92	-970.36	0.00	
7800.00†	35.000	263.071	7530.24	1029.10	-124.84	-1027.30	0.00	
7899.46	35.000	263.071	7611.72	1085.83	-131.72	-1083.93	0.00	End of Tangent
7900.00†	35.043	263.082	7612.16	1086.14	-131.75	-1084.24	8.00	
8000.00†	42.970	264.795	7689.80	1148.77	-138.31	-1146.78	8.00	
8100.00†	50.917	266.062	7758.02	1221.63	-144.08	-1219.56	8.00	
8200.00†	58.874	267.071	7815.48	1303.30	-148.94	-1301.16	8.00	
8300.00†	66.838	267.923	7861.07	1392.17	-152.80	-1389.99	8.00	
8400.00†	74.807	268.678	7893.89	1486.54	-155.58	-1484.32	8.00	
8500.00†	82.777	269.379	7913.32	1584.55	-157.24	-1582.32	8.00	
8585.35	89.581	269.956	7919.00	1669.66	-157.73	-1667.43	8.00	End of 3D Arc

REFERENCE WELLPATH IDENTIFICATION

Operator	Burlington Resources	Slot	SLOT#01 STATE CHALLENGER 5-65 2-3 3BYH Lateral A
Area	COLORADO	Well	STATE CHALLENGER 5-65 2-3 3BYH Lateral A
Field	ARAPAHOE COUNTY (NAD83/TN)	Wellbore	STATE CHALLENGER 5-65 2-3 3BYH Lateral A PWB
Facility	SEC.0-T0N-R0W		

WELLPATH DATA (182 stations) † = interpolated/extrapolated station

MD [ft]	Inclination [°]	Azimuth [°]	TVD [ft]	Vert Sect [ft]	North [ft]	East [ft]	DLS [°/100ft]	Comments
8600.00†	89.581	269.956	7919.11	1684.31	-157.74	-1682.08	0.00	
8700.00†	89.581	269.956	7919.84	1784.29	-157.82	-1782.07	0.00	
8800.00†	89.581	269.956	7920.57	1884.28	-157.90	-1882.07	0.00	
8900.00†	89.581	269.956	7921.30	1984.27	-157.97	-1982.07	0.00	
9000.00†	89.581	269.956	7922.03	2084.25	-158.05	-2082.07	0.00	
9100.00†	89.581	269.956	7922.76	2184.24	-158.13	-2182.06	0.00	
9200.00†	89.581	269.956	7923.49	2284.23	-158.20	-2282.06	0.00	
9300.00†	89.581	269.956	7924.22	2384.21	-158.28	-2382.06	0.00	
9400.00†	89.581	269.956	7924.96	2484.20	-158.36	-2482.05	0.00	
9500.00†	89.581	269.956	7925.69	2584.18	-158.44	-2582.05	0.00	
9600.00†	89.581	269.956	7926.42	2684.17	-158.51	-2682.05	0.00	
9700.00†	89.581	269.956	7927.15	2784.16	-158.59	-2782.05	0.00	
9800.00†	89.581	269.956	7927.88	2884.14	-158.67	-2882.04	0.00	
9900.00†	89.581	269.956	7928.61	2984.13	-158.74	-2982.04	0.00	
10000.00†	89.581	269.956	7929.34	3084.12	-158.82	-3082.04	0.00	
10100.00†	89.581	269.956	7930.07	3184.10	-158.90	-3182.04	0.00	
10200.00†	89.581	269.956	7930.80	3284.09	-158.97	-3282.03	0.00	
10300.00†	89.581	269.956	7931.54	3384.08	-159.05	-3382.03	0.00	
10400.00†	89.581	269.956	7932.27	3484.06	-159.13	-3482.03	0.00	
10500.00†	89.581	269.956	7933.00	3584.05	-159.21	-3582.02	0.00	
10600.00†	89.581	269.956	7933.73	3684.04	-159.28	-3682.02	0.00	
10700.00†	89.581	269.956	7934.46	3784.02	-159.36	-3782.02	0.00	
10800.00†	89.581	269.956	7935.19	3884.01	-159.44	-3882.02	0.00	
10900.00†	89.581	269.956	7935.92	3984.00	-159.51	-3982.01	0.00	
11000.00†	89.581	269.956	7936.65	4083.98	-159.59	-4082.01	0.00	
11100.00†	89.581	269.956	7937.38	4183.97	-159.67	-4182.01	0.00	
11200.00†	89.581	269.956	7938.12	4283.96	-159.75	-4282.01	0.00	
11300.00†	89.581	269.956	7938.85	4383.94	-159.82	-4382.00	0.00	
11400.00†	89.581	269.956	7939.58	4483.93	-159.90	-4482.00	0.00	
11500.00†	89.581	269.956	7940.31	4583.92	-159.98	-4582.00	0.00	

REFERENCE WELLPATH IDENTIFICATION

Operator	Burlington Resources	Slot	SLOT#01 STATE CHALLENGER 5-65 2-3 3BYH Lateral A
Area	COLORADO	Well	STATE CHALLENGER 5-65 2-3 3BYH Lateral A
Field	ARAPAHOE COUNTY (NAD83/TN)	Wellbore	STATE CHALLENGER 5-65 2-3 3BYH Lateral A PWB
Facility	SEC.0-T0N-R0W		

WELLPATH DATA (182 stations) † = interpolated/extrapolated station

MD [ft]	Inclination [°]	Azimuth [°]	TVD [ft]	Vert Sect [ft]	North [ft]	East [ft]	DLS [°/100ft]	Comments
11600.00†	89.581	269.956	7941.04	4683.90	-160.05	-4681.99	0.00	
11700.00†	89.581	269.956	7941.77	4783.89	-160.13	-4781.99	0.00	
11800.00†	89.581	269.956	7942.50	4883.88	-160.21	-4881.99	0.00	
11900.00†	89.581	269.956	7943.23	4983.86	-160.29	-4981.99	0.00	
12000.00†	89.581	269.956	7943.96	5083.85	-160.36	-5081.98	0.00	
12100.00†	89.581	269.956	7944.70	5183.84	-160.44	-5181.98	0.00	
12200.00†	89.581	269.956	7945.43	5283.82	-160.52	-5281.98	0.00	
12300.00†	89.581	269.956	7946.16	5383.81	-160.59	-5381.98	0.00	
12400.00†	89.581	269.956	7946.89	5483.80	-160.67	-5481.97	0.00	
12500.00†	89.581	269.956	7947.62	5583.78	-160.75	-5581.97	0.00	
12600.00†	89.581	269.956	7948.35	5683.77	-160.83	-5681.97	0.00	
12700.00†	89.581	269.956	7949.08	5783.76	-160.90	-5781.97	0.00	
12800.00†	89.581	269.956	7949.81	5883.74	-160.98	-5881.96	0.00	
12900.00†	89.581	269.956	7950.54	5983.73	-161.06	-5981.96	0.00	
13000.00†	89.581	269.956	7951.28	6083.72	-161.13	-6081.96	0.00	
13100.00†	89.581	269.956	7952.01	6183.70	-161.21	-6181.95	0.00	
13200.00†	89.581	269.956	7952.74	6283.69	-161.29	-6281.95	0.00	
13300.00†	89.581	269.956	7953.47	6383.68	-161.36	-6381.95	0.00	
13400.00†	89.581	269.956	7954.20	6483.66	-161.44	-6481.95	0.00	
13500.00†	89.581	269.956	7954.93	6583.65	-161.52	-6581.94	0.00	
13600.00†	89.581	269.956	7955.66	6683.64	-161.60	-6681.94	0.00	
13700.00†	89.581	269.956	7956.39	6783.62	-161.67	-6781.94	0.00	
13800.00†	89.581	269.956	7957.12	6883.61	-161.75	-6881.94	0.00	
13900.00†	89.581	269.956	7957.86	6983.60	-161.83	-6981.93	0.00	
14000.00†	89.581	269.956	7958.59	7083.58	-161.90	-7081.93	0.00	
14100.00†	89.581	269.956	7959.32	7183.57	-161.98	-7181.93	0.00	
14200.00†	89.581	269.956	7960.05	7283.56	-162.06	-7281.92	0.00	
14300.00†	89.581	269.956	7960.78	7383.54	-162.14	-7381.92	0.00	
14400.00†	89.581	269.956	7961.51	7483.53	-162.21	-7481.92	0.00	
14500.00†	89.581	269.956	7962.24	7583.52	-162.29	-7581.92	0.00	

REFERENCE WELLPATH IDENTIFICATION

Operator	Burlington Resources	Slot	SLOT#01 STATE CHALLENGER 5-65 2-3 3BYH Lateral A
Area	COLORADO	Well	STATE CHALLENGER 5-65 2-3 3BYH Lateral A
Field	ARAPAHOE COUNTY (NAD83/TN)	Wellbore	STATE CHALLENGER 5-65 2-3 3BYH Lateral A PWB
Facility	SEC.0-T0N-R0W		

WELLPATH DATA (182 stations) † = interpolated/extrapolated station

MD [ft]	Inclination [°]	Azimuth [°]	TVD [ft]	Vert Sect [ft]	North [ft]	East [ft]	DLS [°/100ft]	Comments
14600.00†	89.581	269.956	7962.97	7683.50	-162.37	-7681.91	0.00	
14700.00†	89.581	269.956	7963.70	7783.49	-162.44	-7781.91	0.00	
14800.00†	89.581	269.956	7964.44	7883.48	-162.52	-7881.91	0.00	
14900.00†	89.581	269.956	7965.17	7983.46	-162.60	-7981.91	0.00	
15000.00†	89.581	269.956	7965.90	8083.45	-162.68	-8081.90	0.00	
15100.00†	89.581	269.956	7966.63	8183.44	-162.75	-8181.90	0.00	
15200.00†	89.581	269.956	7967.36	8283.42	-162.83	-8281.90	0.00	
15300.00†	89.581	269.956	7968.09	8383.41	-162.91	-8381.89	0.00	
15400.00†	89.581	269.956	7968.82	8483.40	-162.98	-8481.89	0.00	
15500.00†	89.581	269.956	7969.55	8583.38	-163.06	-8581.89	0.00	
15600.00†	89.581	269.956	7970.28	8683.37	-163.14	-8681.89	0.00	
15700.00†	89.581	269.956	7971.02	8783.36	-163.22	-8781.88	0.00	
15800.00†	89.581	269.956	7971.75	8883.34	-163.29	-8881.88	0.00	
15900.00†	89.581	269.956	7972.48	8983.33	-163.37	-8981.88	0.00	
16000.00†	89.581	269.956	7973.21	9083.32	-163.45	-9081.88	0.00	
16100.00†	89.581	269.956	7973.94	9183.30	-163.52	-9181.87	0.00	
16200.00†	89.581	269.956	7974.67	9283.29	-163.60	-9281.87	0.00	
16300.00†	89.581	269.956	7975.40	9383.28	-163.68	-9381.87	0.00	
16400.00†	89.581	269.956	7976.13	9483.26	-163.76	-9481.87	0.00	
16500.00†	89.581	269.956	7976.86	9583.25	-163.83	-9581.86	0.00	
16600.00†	89.581	269.956	7977.60	9683.24	-163.91	-9681.86	0.00	
16700.00†	89.581	269.956	7978.33	9783.22	-163.99	-9781.86	0.00	
16800.00†	89.581	269.956	7979.06	9883.21	-164.06	-9881.85	0.00	
16900.00†	89.581	269.956	7979.79	9983.20	-164.14	-9981.85	0.00	
17000.00†	89.581	269.956	7980.52	10083.18	-164.22	-10081.85	0.00	
17100.00†	89.581	269.956	7981.25	10183.17	-164.29	-10181.85	0.00	
17200.00†	89.581	269.956	7981.98	10283.16	-164.37	-10281.84	0.00	
17300.00†	89.581	269.956	7982.71	10383.14	-164.45	-10381.84	0.00	
17400.00†	89.581	269.956	7983.44	10483.13	-164.53	-10481.84	0.00	
17500.00†	89.581	269.956	7984.18	10583.12	-164.60	-10581.84	0.00	

REFERENCE WELLPATH IDENTIFICATION			
Operator	Burlington Resources	Slot	SLOT#01 STATE CHALLENGER 5-65 2-3 3BYH Lateral A
Area	COLORADO	Well	STATE CHALLENGER 5-65 2-3 3BYH Lateral A
Field	ARAPAHOE COUNTY (NAD83/TN)	Wellbore	STATE CHALLENGER 5-65 2-3 3BYH Lateral A PWB
Facility	SEC.0-T0N-R0W		

WELLPATH DATA (182 stations) † = interpolated/extrapolated station										
MD [ft]	Inclination [°]		Azimuth [°]		TVD [ft]	Vert Sect [ft]	North [ft]	East [ft]	DLS [°/100ft]	Comments
17600.00†	89.581		269.956		7984.91	10683.10	-164.68	-10681.83	0.00	
17612.72	89.581		269.956		7985.00	10695.82	-164.69	-10694.55	0.00	End of Tangent

REFERENCE WELLPATH IDENTIFICATION

Operator	Burlington Resources	Slot	SLOT#01 STATE CHALLENGER 5-65 2-3 3BYH Lateral A
Area	COLORADO	Well	STATE CHALLENGER 5-65 2-3 3BYH Lateral A
Field	ARAPAHOE COUNTY (NAD83/TN)	Wellbore	STATE CHALLENGER 5-65 2-3 3BYH Lateral A PWB
Facility	SEC.0-T0N-R0W		

DESIGN COMMENTS

MD [ft]	Inclination [°]	Azimuth [°]	TVD [ft]	Comment
0.00	0.000	263.071	0.00	Tie On
5149.05	0.000	263.071	5149.05	End of Tangent
6899.05	35.000	263.071	6792.23	End of Build
7899.46	35.000	263.071	7611.72	End of Tangent
8585.35	89.581	269.956	7919.00	End of 3D Arc
17612.72	89.581	269.956	7985.00	End of Tangent