



# Kerr-McGee Oil & Gas Onshore LP

A subsidiary of Anadarko Petroleum Corporation

1099 18<sup>th</sup> Street  
Denver, CO 80202  
720-929-6000

December 29, 2016

Matt Lepore  
Director, Colorado Oil and Gas Conservation Commission  
Department of Natural Resources  
The Chancery Building  
1120 Lincoln Street, Suite 801  
Denver, CO 80203

Re: **30 Day Certification Letter - 318A.e**  
NEWBY STATE 15N-4HZ (DOC # 401162591)  
Township 3 North, Range 68 West  
Section 33: SWSE  
Unit Acreage: 480 Acres  
Unit Spacing: T2N R68W Sec 4: E2; Sec 9: N2NE; T3N R68W Sec 33: S2SE  
Weld County, Colorado

Dear Director Lepore:

Kerr-McGee Oil and Gas Onshore LP (“KMG”) hereby certifies that a thirty (30) day notice has been given by certified mail to all mineral owners in the proposed wellbore spacing unit. We have not received any objections to such well location, proposed spacing unit, or additional producing formation. KMG hereby respectfully requests approval of this boundary well.

If you have any questions or issues regarding this permit, please contact our office.

Sincerely,

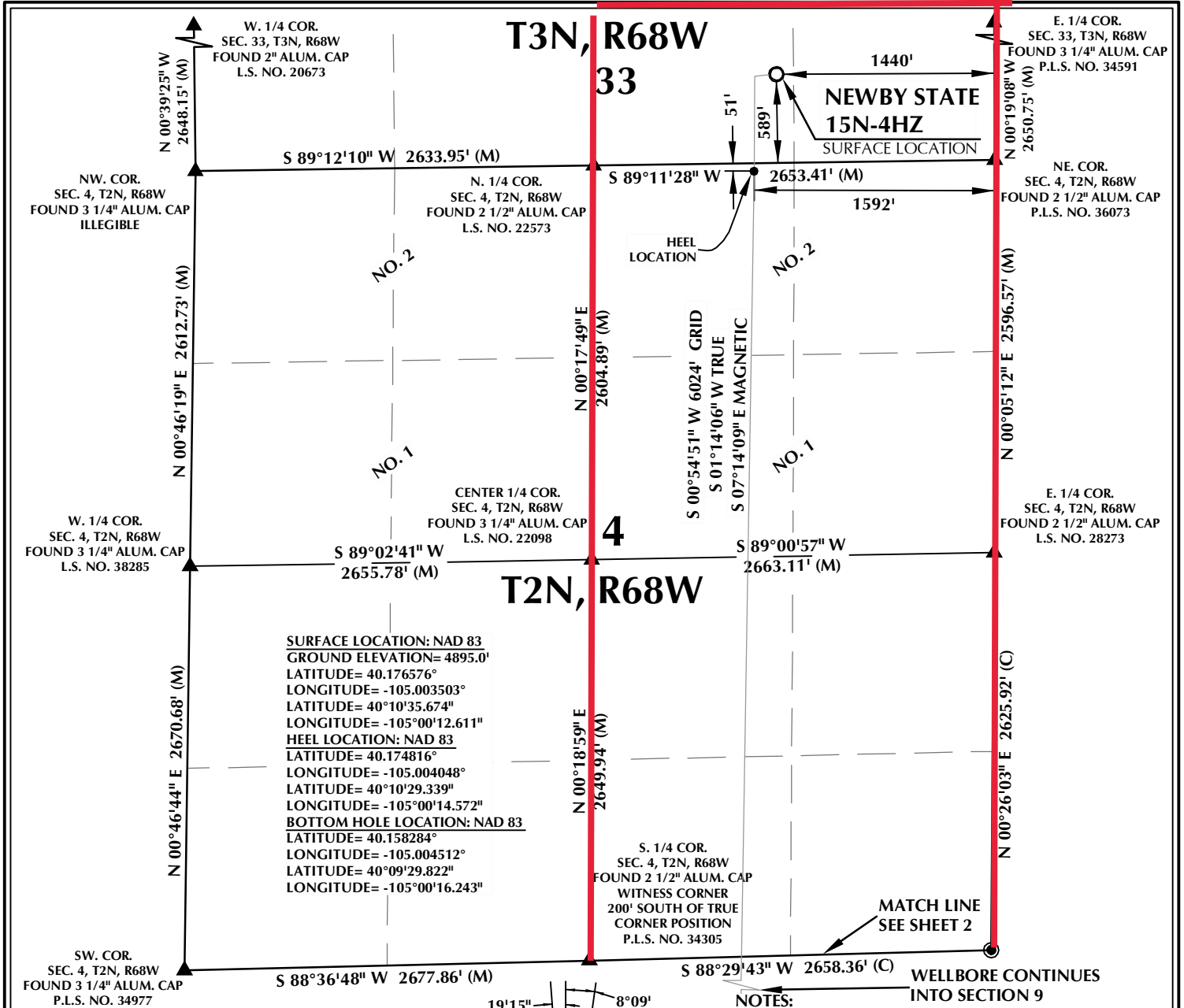
**Kerr-McGee Oil and Gas Onshore LP**

A handwritten signature in blue ink, appearing to read 'Craig Richardson'.

Craig Richardson  
Regulatory Analyst

Enclosure

# PROPOSED SPACING UNIT

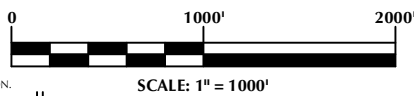


**CERTIFICATE OF SURVEYOR:**

THIS IS TO CERTIFY THAT THE ABOVE PLAT WAS PREPARED FROM FIELD NOTES OF ACTUAL MEASUREMENTS MADE BY ME OR UNDER MY SUPERVISION AND THAT THEY ARE TRUE AND CORRECT TO THE BEST OF MY KNOWLEDGE AND BELIEF. THIS CERTIFICATE DOES NOT REPRESENT A LAND SURVEY PLAT OR IMPROVEMENT SURVEY PLAT AS DEFINED BY C.R.S. 38-51-302 AND CANNOT BE RELIED UPON TO DETERMINE OWNERSHIP.

*Randall K. French*  
**RANDALL K. FRENCH**  
 PROFESSIONAL LAND SURVEYOR  
 COLORADO REGISTRATION NUMBER 18512

**NOTE:**  
 MAGNETIC NORTH IS CURRENT AS OF 1/7/2016.  
 MAGNETIC NORTH CHANGES WEST 0°06' PER YEAR.



**NOTES:**

- ▲ INDICATES SECTION CORNER
- INDICATES CALCULATED CORNER
- ELEVATION BASED ON NAVD88 (GEOID12B)
- BASIS OF BEARING DERIVED FROM COLORADO COORDINATE SYSTEM OF 1983 NORTH ZONE.
- ALL MEASURED DISTANCES ARE GRID.  
COMBINED SCALE FACTOR: .99972556 CALCULATED FROM THE W. 1/4 CORNER OF SECTION 4, T2N, R68W  
OPERATOR: ROB WILSON / PDOP = 1.3
- SEE ADDENDUM TO WELL LOCATION CERTIFICATE FOR EXISTING IMPROVEMENTS WITHIN 500' OF THE WELL PAD.
- WELL FOOTAGES ARE MEASURED AT RIGHT ANGLES TO THE SECTION LINES.  
THE BOTTOM OF HOLE BEARS S00°54'51"W, 6024' FROM THE HEEL LOCATION.
- NO. 1 & NO. 2 AS SHOWN HEREON ARE GOVERNMENT LOTS 1 & 2 PER THE ORIGINAL GLO SURVEY

**WELL PAD - NEWBY 27N-33Z**

NEWBY STATE 15N-4HZ  
 WELL LOCATION CERTIFICATE  
 589' FSL & 1440' FEL SWSE (SURFACE)  
 LOCATED IN SECTION 33  
 T3N, R68W, 6TH P.M.  
 51' FNL & 1592' FEL LOT 2 (NWNE) (HEEL)  
 LOCATED IN SECTION 4  
 830' FNL & 1661' FEL NWNE (BOTTOM)  
 LOCATED IN SECTION 9  
 T2N, R68W, 6TH P.M.  
 WELD COUNTY, COLORADO

**Kerr-McGee Oil &  
 Gas Onshore L.P.**  
 1099 18th Street  
 Denver, Colorado 80202



**CONSULTING, LLC**

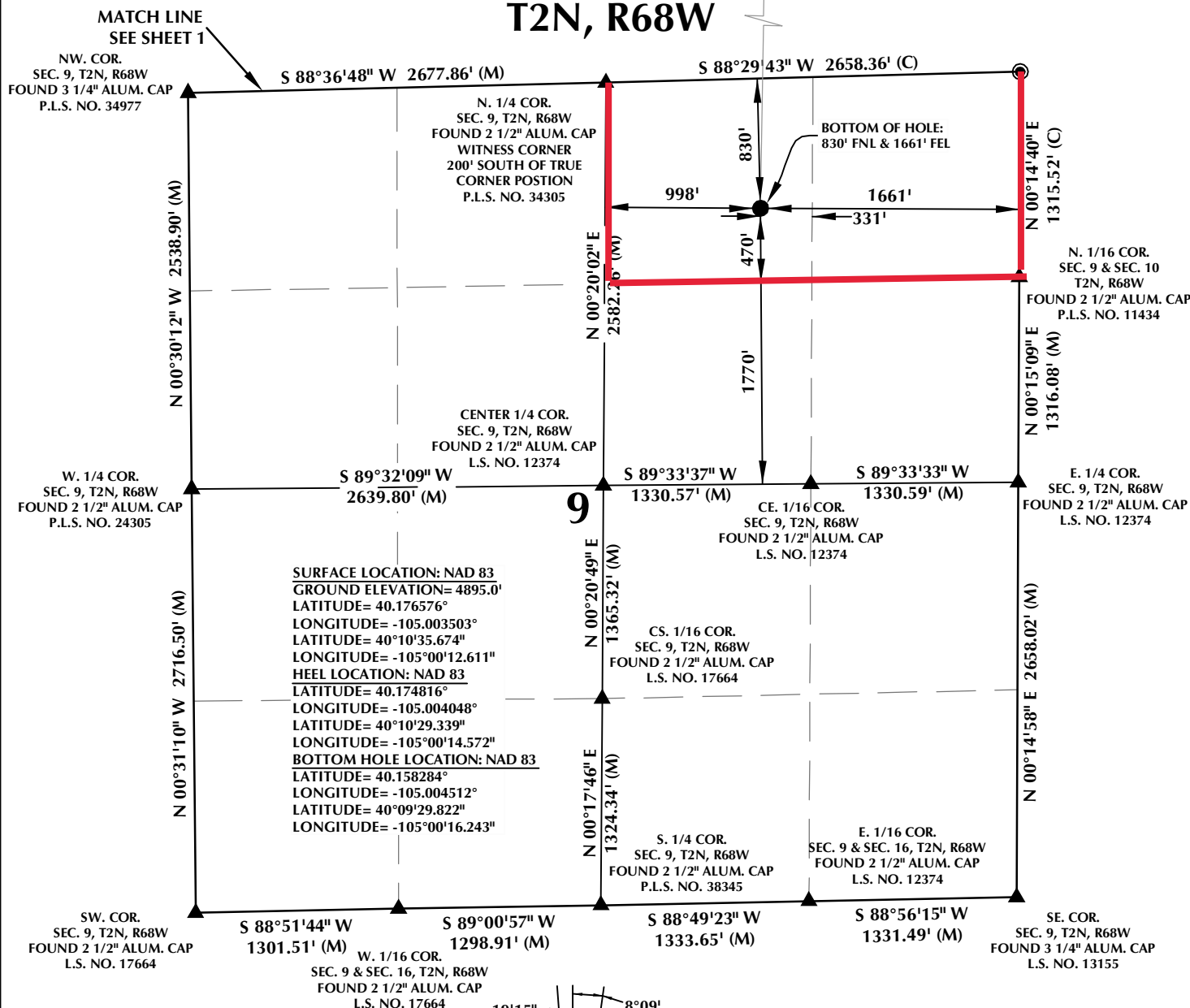
**SHERIDAN OFFICE**  
 1095 Saberton Avenue  
 Sheridan, Wyoming 82801  
 Phone 307-674-0609

**LOVELAND OFFICE**  
 1635 Foxtrail Drive, Suite 204  
 Loveland, Colorado 80538  
 Phone 970-776-4331

DRAFTED BY: LMO	CHECKED BY: RKF	SHEET NO: <b>1</b> 1 OF 2
DATE DRAFTED: 1/21/16	DATE SURVEYED: 1/7/16	
REVISED: 5/10/17	FILE NAME: 15-65	

# PROPOSED SPACING UNIT

## T2N, R68W

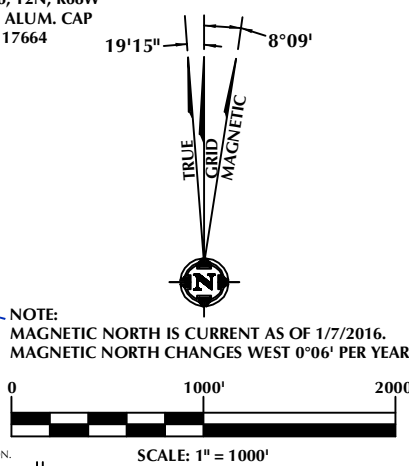


### CERTIFICATE OF SURVEYOR:

THIS IS TO CERTIFY THAT THE ABOVE PLAT WAS PREPARED FROM FIELD NOTES OF ACTUAL SURVEY MADE BY ME OR UNDER MY SUPERVISION AND THAT THE SAME ARE TRUE AND CORRECT TO THE BEST OF MY KNOWLEDGE AND BELIEF. THIS CERTIFICATE DOES NOT REPRESENT A LAND SURVEY PLAT OR IMPROVEMENT SURVEY PLAT AS DEFINED BY C.R.S. 38-51-302 AND CANNOT BE RELIED UPON TO DETERMINE OWNERSHIP.

*Randall K. French*  
**PROFESSIONAL LAND SURVEYOR**  
 COLORADO REGISTRATION NUMBER 18512  
 5/10/17

**NOTICE:**  
 ACCORDING TO COLORADO STATE LAW YOU MUST COMMENCE ANY LEGAL ACTION BASED UPON ANY DEFECT IN THIS SURVEY WITHIN THREE YEARS AFTER YOU FIRST DISCOVER SUCH DEFECT. IN NO EVENT MAY ANY ACTION BASED UPON ANY DEFECT IN THIS SURVEY BE COMMENCED MORE THAN TEN YEARS FROM THE DATE ON THE CERTIFICATION SHOWN HEREON.



### NOTES:

- ▲ INDICATES SECTION CORNER
- INDICATES CALCULATED CORNER
- ELEVATION BASED ON NAVD88 (GEOID12B)
- BASIS OF BEARING DERIVED FROM COLORADO COORDINATE SYSTEM OF 1983 NORTH ZONE.
- ALL MEASURED DISTANCES ARE GRID.  
COMBINED SCALE FACTOR: .99972556 CALCULATED FROM THE W. 1/4 CORNER OF SECTION 4, T2N, R68W
- OPERATOR: ROB WILSON / PDOP = 1.3
- SEE ADDENDUM TO WELL LOCATION CERTIFICATE FOR EXISTING IMPROVEMENTS WITHIN 500' OF THE WELL PAD.
- WELL FOOTAGES ARE MEASURED AT RIGHT ANGLES TO THE SECTION LINES.
- THE BOTTOM OF HOLE BEARS S00°54'51"W, 6024' FROM THE HEEL LOCATION.

### WELL PAD - NEWBY 27N-33W

NEWBY STATE 15N-4HZ  
 WELL LOCATION CERTIFICATE  
 589' FSL & 1440' FEL SWSE (SURFACE)  
 LOCATED IN SECTION 33  
 T3N, R68W, 6TH P.M.  
 51' FNL & 1592' FEL LOT 2 (NWN) (HEEL)  
 LOCATED IN SECTION 4  
 830' FNL & 1661' FEL NWN (BOTTOM)  
 LOCATED IN SECTION 9  
 T2N, R68W, 6TH P.M.  
 WELD COUNTY, COLORADO

**Kerr-McGee Oil &  
 Gas Onshore L.P.**  
 1099 18th Street  
 Denver, Colorado 80202



### CONSULTING, LLC

**SHERIDAN OFFICE**  
 1095 Saberton Avenue  
 Sheridan, Wyoming 82801  
 Phone 307-674-0609

**LOVELAND OFFICE**  
 1635 Foxtrail Drive, Suite 204  
 Loveland, Colorado 80538  
 Phone 970-776-4331

DRAFTED BY:	LMO	CHECKED BY:	RKF	SHEET NO:
DATE DRAFTED:	1/21/16	DATE SURVEYED:	1/7/16	2
REVISED:	5/10/17	FILE NAME:	15-65	2 OF 2