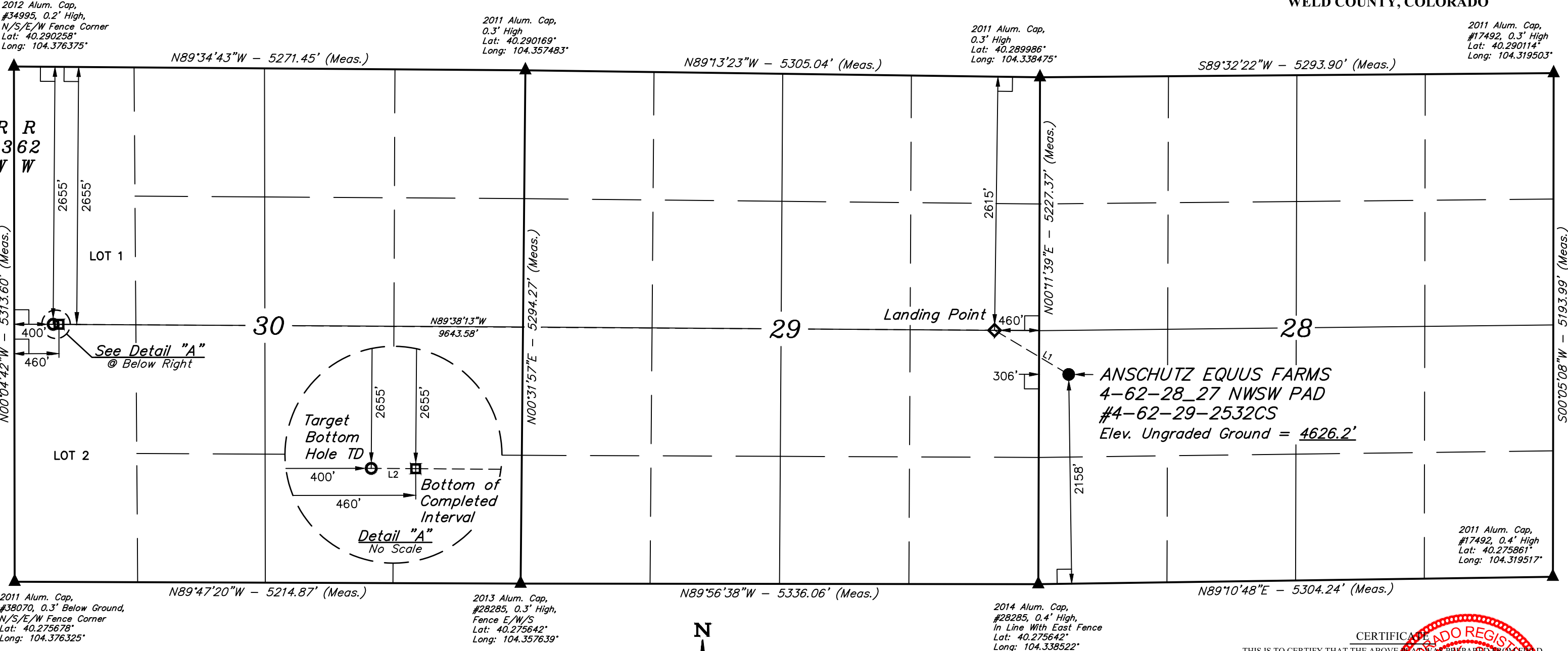


T4N, R62W, 6th P.M.

BILL BARRETT CORPORATION
ANSCHUTZ EQUUS FARMS 4-62-28_27 NWSW PAD
#4-62-29-2532CS
NW 1/4 SW 1/4, SECTION 28, T4N, R62W, 6th P.M.
WELD COUNTY, COLORADO

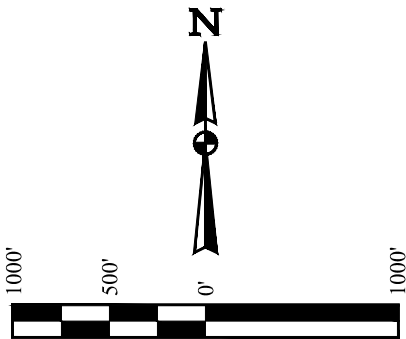


- LEGEND:**
- └─┘ = 90° SYMBOL
 - = PROPOSED WELLHEAD.
 - ◆ = LANDING POINT.
 - = BOTTOM OF COMPLETED INTERVAL.
 - = TARGET BOTTOM HOLE TD.
 - ▲ = SECTION CORNERS LOCATED. (NAD 83)

BASIS OF BEARINGS
BASIS OF BEARINGS IS A G.P.S. OBSERVATION

BASIS OF ELEVATION
SPOT ELEVATION LOCATED AT THE NORTHEAST CORNER OF SECTION 24, T5N, R62W, 6th P.M. TAKEN FROM THE POINT OF ROCKS, QUADRANGLE, COLORADO, WELD COUNTY, 7.5 MINUTE QUAD (TOPOGRAPHIC MAP) PUBLISHED BY THE UNITED STATES DEPARTMENT OF THE INTERIOR, GEOLOGICAL SURVEY. SAID ELEVATION IS MARKED AS BEING 4530 FEET.

LINE TABLE		
LINE	DIRECTION	LENGTH
L1	N59°11'45"W	889.94'
L2	N89°34'43"W	60.00'



NAD 83 (SURFACE LOCATION)	NAD 83 (LANDING POINT)	NAD 83 (BTM. OF COMPLETED INT.)	NAD 83 (TARGET BOTTOM HOLE TD)
LATITUDE = 40°16'53.68" (40.281578)	LATITUDE = 40°16'58.17" (40.282825)	LATITUDE = 40°16'58.67" (40.282964)	LATITUDE = 40°16'58.68" (40.282967)
LONGITUDE = 104°20'14.66" (104.337406)	LONGITUDE = 104°20'24.52" (104.340144)	LONGITUDE = 104°22'28.93" (104.374703)	LONGITUDE = 104°22'29.70" (104.374917)
NAD 27 (SURFACE LOCATION)	NAD 27 (LANDING POINT)	NAD 27 (BTM. OF COMPLETED INT.)	NAD 27 (TARGET BOTTOM HOLE TD)
LATITUDE = 40°16'53.75" (40.281597)	LATITUDE = 40°16'58.24" (40.282844)	LATITUDE = 40°16'58.74" (40.282983)	LATITUDE = 40°16'58.75" (40.282986)
LONGITUDE = 104°20'12.83" (104.336897)	LONGITUDE = 104°20'22.69" (104.339636)	LONGITUDE = 104°22'27.09" (104.374192)	LONGITUDE = 104°22'27.87" (104.374408)
STATE PLANE NAD 83 (CO. NORTH)	STATE PLANE NAD 83 (CO. NORTH)	STATE PLANE NAD 83 (CO. NORTH)	STATE PLANE NAD 83 (CO. NORTH)
N: 1347545.99 E: 3324351.00	N: 1347990.90 E: 3323580.52	N: 1347917.35 E: 3313939.76	N: 1347916.95 E: 3313879.78
STATE PLANE NAD 27 (CO. NORTH)	STATE PLANE NAD 27 (CO. NORTH)	STATE PLANE NAD 27 (CO. NORTH)	STATE PLANE NAD 27 (CO. NORTH)
N: 347548.64 E: 2324501.33	N: 347993.53 E: 2323730.84	N: 347919.91 E: 2314090.08	N: 347919.52 E: 2314030.09

PDOP = 1.5

CERTIFICATE
THIS IS TO CERTIFY THAT THE ABOVE PLAT WAS PREPARED FROM FIELD NOTES OF ACTUAL SURVEYS MADE BY ME OR UNDER MY SUPERVISION AND THAT THE SAME ARE TRUE AND CORRECT TO THE BEST OF MY KNOWLEDGE AND BELIEF.



REV: 2 06-13-17 C.C. (LP & BHL CHANGE)



UELS, LLC
Corporate Office * 85 South 200 East
Vernal, UT 84078 * (435) 789-1017

SURVEYED BY	CHAD MEIERS, N.P.	12-21-16	SCALE
DRAWN BY	D.P.	01-20-17	1" = 1000'

WELL LOCATION PLAT