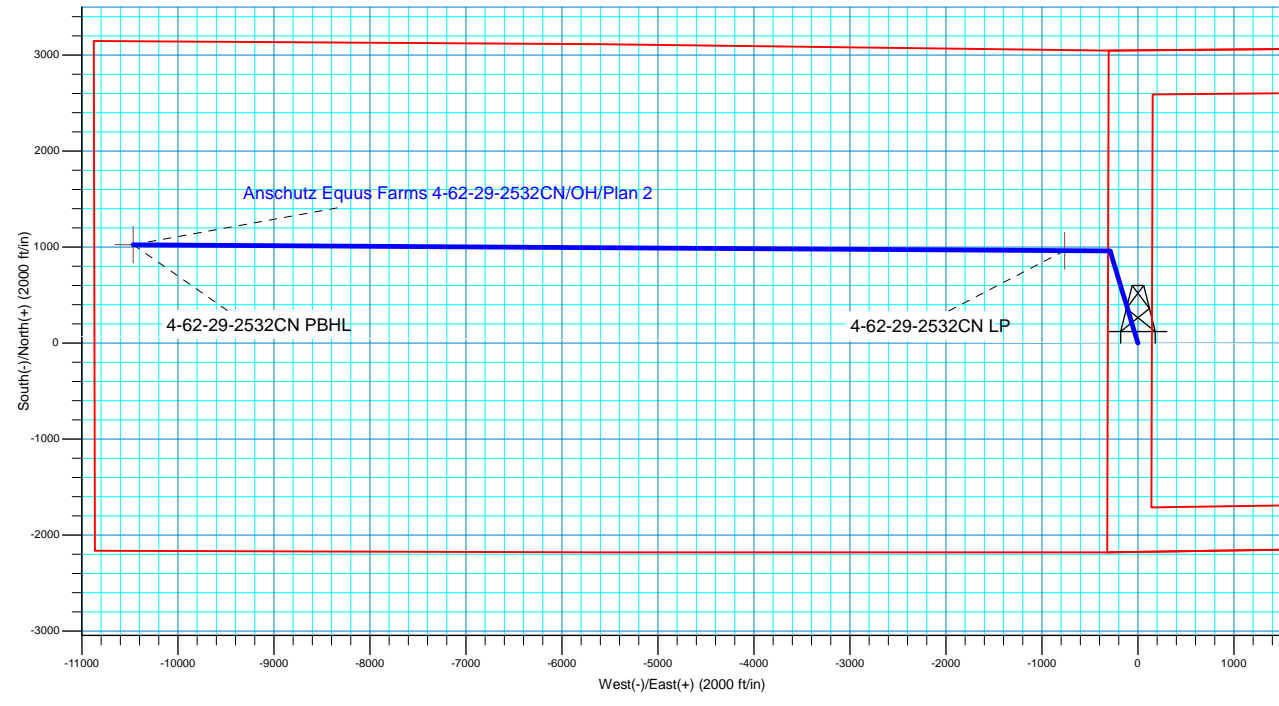
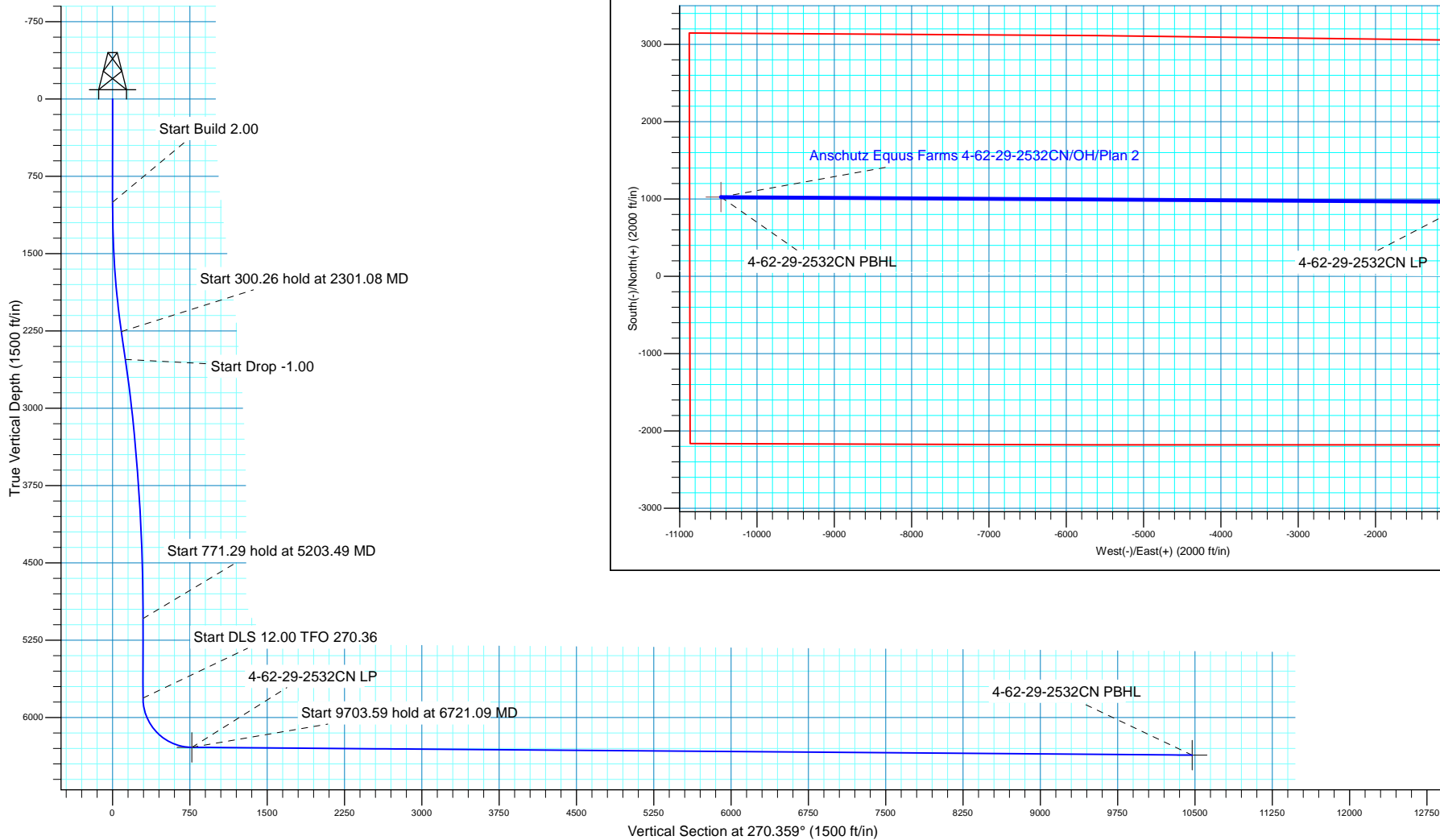



**SECTION DETAILS**

MD	Inc	Azi	TVD	+N/-S	+E/-W	Dleg	TFace	VSect
0.00	0.00	0.000	0.00	0.00	0.00	0.00	0.00	0.00
1000.00	0.00	0.000	1000.00	0.00	0.00	0.00	0.00	0.00
2301.08	26.02	343.220	2256.81	278.04	-83.84	2.00	343.22	85.58
2601.34	26.02	343.220	2526.63	404.16	-121.87	0.00	0.00	124.40
5203.49	0.00	0.000	5040.25	960.24	-289.55	1.00	180.00	295.56
5974.78	0.00	0.000	5811.54	960.24	-289.55	0.00	0.00	295.56
6721.09	89.56	270.359	6288.99	963.21	-763.31	12.00	270.36	769.33
16424.69	89.56	270.359	6364.00	1024.07	-10466.43	0.00	0.00	10472.64

**WELL DETAILS:** Anschutz Equus Farms 4-62-29-2532CN

		GL 4624' & KB 20' @ 4644.00ft		4624.00	Longitude
+N/-S	+E/-W	Northing	Easting	Latitude	
0.00	0.00	1347560.61	3324350.59	40° 16' 53.821 N	104° 20' 14.662 W





**Bill Barrett Corporation**

## **Bill Barrett Corp.**

Weld County, CO NAD 83

Anschutz Equus Farms 4-62-28\_27 NWSW Pad

Anschutz Equus Farms 4-62-29-2532CN

OH

Plan: Plan 2

## **Standard Planning Report**

28 June, 2017



**Scientific Drilling**

[www.scientificdrilling.com](http://www.scientificdrilling.com)



<b>Database:</b>	Casper District	<b>Local Co-ordinate Reference:</b>	Well Anschutz Equus Farms 4-62-29-2532CN
<b>Company:</b>	Bill Barrett Corp.	<b>TVD Reference:</b>	GL 4624' & KB 20' @ 4644.00ft
<b>Project:</b>	Weld County, CO NAD 83	<b>MD Reference:</b>	GL 4624' & KB 20' @ 4644.00ft
<b>Site:</b>	Anschutz Equus Farms 4-62-28_27 NWSW Pad	<b>North Reference:</b>	True
<b>Well:</b>	Anschutz Equus Farms 4-62-29-2532CN	<b>Survey Calculation Method:</b>	Minimum Curvature
<b>Wellbore:</b>	OH		
<b>Design:</b>	Plan 2		

<b>Project</b>	Weld County, CO NAD 83		
<b>Map System:</b>	US State Plane 1983	<b>System Datum:</b>	Mean Sea Level
<b>Geo Datum:</b>	North American Datum 1983		
<b>Map Zone:</b>	Colorado Northern Zone		

<b>Site</b>	Anschutz Equus Farms 4-62-28_27 NWSW Pad, Site Center : Anschutz Equus Farms 4-62-28-3240C		
<b>Site Position:</b>		<b>Northing:</b>	1,347,562.99 usft
<b>From:</b>	Lat/Long	<b>Easting:</b>	3,324,530.53 usft
<b>Position Uncertainty:</b>	0.00 ft	<b>Slot Radius:</b>	13.200 in
		<b>Latitude:</b>	40° 16' 53.821 N
		<b>Longitude:</b>	104° 20' 12.340 W
		<b>Grid Convergence:</b>	0.75 °

<b>Well</b>	Anschutz Equus Farms 4-62-29-2532CN, 2173' FSL 306' FWL Sec 28 T4N R62W		
<b>Well Position</b>	<b>+N/-S</b>	-0.03 ft	<b>Northing:</b> 1,347,560.60 usft
	<b>+E/-W</b>	-179.95 ft	<b>Easting:</b> 3,324,350.60 usft
<b>Position Uncertainty</b>	0.00 ft	<b>Wellhead Elevation:</b>	0.00 ft
		<b>Latitude:</b>	40° 16' 53.821 N
		<b>Longitude:</b>	104° 20' 14.662 W
		<b>Ground Level:</b>	4,624.00 ft

<b>Wellbore</b>	OH				
<b>Magnetics</b>	<b>Model Name</b>	<b>Sample Date</b>	<b>Declination (°)</b>	<b>Dip Angle (°)</b>	<b>Field Strength (nT)</b>
	HDGM	4/28/2017	8.28	66.95	52,386
	HDGM	6/28/2017	8.27	66.95	52,366

<b>Design</b>	Plan 2			
<b>Audit Notes:</b>				
<b>Version:</b>	<b>Phase:</b>	PLAN	<b>Tie On Depth:</b>	0.00
<b>Vertical Section:</b>	<b>Depth From (TVD) (ft)</b>	<b>+N/-S (ft)</b>	<b>+E/-W (ft)</b>	<b>Direction (°)</b>
	0.00	0.00	0.00	270.359

<b>Plan Sections</b>										
Measured Depth (ft)	Inclination (°)	Azimuth (°)	Vertical Depth (ft)	+N/-S (ft)	+E/-W (ft)	Dogleg Rate (°/100ft)	Build Rate (°/100ft)	Turn Rate (°/100ft)	TFO (°)	Target
0.00	0.00	0.000	0.00	0.00	0.00	0.00	0.00	0.00	0.00	
1,000.00	0.00	0.000	1,000.00	0.00	0.00	0.00	0.00	0.00	0.00	
2,301.08	26.02	343.220	2,256.81	278.04	-83.84	2.00	2.00	0.00	343.22	
2,601.34	26.02	343.220	2,526.63	404.16	-121.87	0.00	0.00	0.00	0.00	
5,203.49	0.00	0.000	5,040.25	960.24	-289.55	1.00	-1.00	0.00	180.00	
5,974.78	0.00	0.000	5,811.54	960.24	-289.55	0.00	0.00	0.00	0.00	
6,721.09	89.56	270.359	6,288.99	963.21	-763.31	12.00	12.00	-12.01	270.36	
16,424.69	89.56	270.359	6,364.00	1,024.07	-10,466.43	0.00	0.00	0.00	0.00	4-62-29-2532CN PBI-

<b>Database:</b>	Casper District	<b>Local Co-ordinate Reference:</b>	Well Anschutz Equus Farms 4-62-29-2532CN
<b>Company:</b>	Bill Barrett Corp.	<b>TVD Reference:</b>	GL 4624' & KB 20' @ 4644.00ft
<b>Project:</b>	Weld County, CO NAD 83	<b>MD Reference:</b>	GL 4624' & KB 20' @ 4644.00ft
<b>Site:</b>	Anschutz Equus Farms 4-62-28_27 NWSW Pad	<b>North Reference:</b>	True
<b>Well:</b>	Anschutz Equus Farms 4-62-29-2532CN	<b>Survey Calculation Method:</b>	Minimum Curvature
<b>Wellbore:</b>	OH		
<b>Design:</b>	Plan 2		

**Planned Survey**

Measured Depth (ft)	Inclination (°)	Azimuth (°)	Vertical Depth (ft)	+N/-S (ft)	+E/-W (ft)	Vertical Section (ft)	Dogleg Rate (°/100ft)	Build Rate (°/100ft)	Turn Rate (°/100ft)
0.00	0.00	0.000	0.00	0.00	0.00	0.00	0.00	0.00	0.00
100.00	0.00	0.000	100.00	0.00	0.00	0.00	0.00	0.00	0.00
200.00	0.00	0.000	200.00	0.00	0.00	0.00	0.00	0.00	0.00
300.00	0.00	0.000	300.00	0.00	0.00	0.00	0.00	0.00	0.00
400.00	0.00	0.000	400.00	0.00	0.00	0.00	0.00	0.00	0.00
500.00	0.00	0.000	500.00	0.00	0.00	0.00	0.00	0.00	0.00
600.00	0.00	0.000	600.00	0.00	0.00	0.00	0.00	0.00	0.00
700.00	0.00	0.000	700.00	0.00	0.00	0.00	0.00	0.00	0.00
800.00	0.00	0.000	800.00	0.00	0.00	0.00	0.00	0.00	0.00
900.00	0.00	0.000	900.00	0.00	0.00	0.00	0.00	0.00	0.00
1,000.00	0.00	0.000	1,000.00	0.00	0.00	0.00	0.00	0.00	0.00
<b>Start Build 2.00</b>									
1,100.00	2.00	343.220	1,099.98	1.67	-0.50	0.51	2.00	2.00	0.00
1,200.00	4.00	343.220	1,199.84	6.68	-2.01	2.06	2.00	2.00	0.00
1,300.00	6.00	343.220	1,299.45	15.03	-4.53	4.62	2.00	2.00	0.00
1,400.00	8.00	343.220	1,398.70	26.69	-8.05	8.22	2.00	2.00	0.00
1,500.00	10.00	343.220	1,497.47	41.67	-12.56	12.83	2.00	2.00	0.00
1,600.00	12.00	343.220	1,595.62	59.94	-18.07	18.45	2.00	2.00	0.00
1,700.00	14.00	343.220	1,693.06	81.47	-24.57	25.08	2.00	2.00	0.00
1,800.00	16.00	343.220	1,789.64	106.25	-32.04	32.70	2.00	2.00	0.00
1,900.00	18.00	343.220	1,885.27	134.24	-40.48	41.32	2.00	2.00	0.00
2,000.00	20.00	343.220	1,979.82	165.41	-49.88	50.91	2.00	2.00	0.00
2,100.00	22.00	343.220	2,073.17	199.72	-60.22	61.47	2.00	2.00	0.00
2,200.00	24.00	343.220	2,165.21	237.13	-71.50	72.99	2.00	2.00	0.00
2,300.00	26.00	343.220	2,255.84	277.59	-83.70	85.44	2.00	2.00	0.00
2,301.08	26.02	343.220	2,256.81	278.04	-83.84	85.58	2.00	2.00	0.00
<b>Start 300.26 hold at 2301.08 MD</b>									
2,400.00	26.02	343.220	2,345.70	319.59	-96.37	98.37	0.00	0.00	0.00
2,500.00	26.02	343.220	2,435.57	361.59	-109.03	111.30	0.00	0.00	0.00
2,600.00	26.02	343.220	2,525.43	403.60	-121.70	124.23	0.00	0.00	0.00
2,601.34	26.02	343.220	2,526.63	404.16	-121.87	124.40	0.00	0.00	0.00
<b>Start Drop -1.00</b>									
2,700.00	25.03	343.220	2,615.66	444.87	-134.14	136.93	1.00	-1.00	0.00
2,800.00	24.03	343.220	2,706.63	484.62	-146.13	149.17	1.00	-1.00	0.00
2,900.00	23.03	343.220	2,798.31	522.85	-157.66	160.93	1.00	-1.00	0.00
3,000.00	22.03	343.220	2,890.67	559.55	-168.72	172.23	1.00	-1.00	0.00
3,100.00	21.03	343.220	2,983.69	594.69	-179.32	183.04	1.00	-1.00	0.00
3,200.00	20.03	343.220	3,077.34	628.27	-189.45	193.38	1.00	-1.00	0.00
3,300.00	19.03	343.220	3,171.58	660.29	-199.10	203.24	1.00	-1.00	0.00
3,400.00	18.03	343.220	3,266.39	690.72	-208.28	212.60	1.00	-1.00	0.00
3,500.00	17.03	343.220	3,361.74	719.57	-216.98	221.48	1.00	-1.00	0.00
3,600.00	16.03	343.220	3,457.61	746.81	-225.19	229.87	1.00	-1.00	0.00
3,700.00	15.03	343.220	3,553.95	772.46	-232.93	237.76	1.00	-1.00	0.00
3,800.00	14.03	343.220	3,650.75	796.48	-240.17	245.16	1.00	-1.00	0.00
3,900.00	13.03	343.220	3,747.97	818.89	-246.93	252.05	1.00	-1.00	0.00
4,000.00	12.03	343.220	3,845.59	839.67	-253.19	258.45	1.00	-1.00	0.00
4,100.00	11.03	343.220	3,943.57	858.81	-258.97	264.34	1.00	-1.00	0.00
4,200.00	10.03	343.220	4,041.88	876.32	-264.24	269.73	1.00	-1.00	0.00
4,300.00	9.03	343.220	4,140.50	892.18	-269.03	274.61	1.00	-1.00	0.00
4,400.00	8.03	343.220	4,239.39	906.39	-273.31	278.99	1.00	-1.00	0.00
4,500.00	7.03	343.220	4,338.52	918.94	-277.10	282.85	1.00	-1.00	0.00
4,600.00	6.03	343.220	4,437.87	929.84	-280.38	286.20	1.00	-1.00	0.00
4,700.00	5.03	343.220	4,537.41	939.07	-283.17	289.05	1.00	-1.00	0.00

<b>Database:</b>	Casper District	<b>Local Co-ordinate Reference:</b>	Well Anschutz Equus Farms 4-62-29-2532CN
<b>Company:</b>	Bill Barrett Corp.	<b>TVD Reference:</b>	GL 4624' & KB 20' @ 4644.00ft
<b>Project:</b>	Weld County, CO NAD 83	<b>MD Reference:</b>	GL 4624' & KB 20' @ 4644.00ft
<b>Site:</b>	Anschutz Equus Farms 4-62-28_27 NWSW Pad	<b>North Reference:</b>	True
<b>Well:</b>	Anschutz Equus Farms 4-62-29-2532CN	<b>Survey Calculation Method:</b>	Minimum Curvature
<b>Wellbore:</b>	OH		
<b>Design:</b>	Plan 2		

**Planned Survey**

Measured Depth (ft)	Inclination (°)	Azimuth (°)	Vertical Depth (ft)	+N/-S (ft)	+E/-W (ft)	Vertical Section (ft)	Dogleg Rate (°/100ft)	Build Rate (°/100ft)	Turn Rate (°/100ft)
4,800.00	4.03	343.220	4,637.09	946.64	-285.45	291.38	1.00	-1.00	0.00
4,900.00	3.03	343.220	4,736.90	952.55	-287.23	293.19	1.00	-1.00	0.00
5,000.00	2.03	343.220	4,836.80	956.78	-288.51	294.50	1.00	-1.00	0.00
5,100.00	1.03	343.220	4,936.76	959.35	-289.28	295.29	1.00	-1.00	0.00
5,200.00	0.03	343.220	5,036.76	960.24	-289.55	295.56	1.00	-1.00	0.00
5,203.49	0.00	0.000	5,040.25	960.24	-289.55	295.56	1.00	-1.00	0.00
<b>Start 771.29 hold at 5203.49 MD</b>									
5,300.00	0.00	0.000	5,136.76	960.24	-289.55	295.56	0.00	0.00	0.00
5,400.00	0.00	0.000	5,236.76	960.24	-289.55	295.56	0.00	0.00	0.00
5,500.00	0.00	0.000	5,336.76	960.24	-289.55	295.56	0.00	0.00	0.00
5,600.00	0.00	0.000	5,436.76	960.24	-289.55	295.56	0.00	0.00	0.00
5,700.00	0.00	0.000	5,536.76	960.24	-289.55	295.56	0.00	0.00	0.00
5,800.00	0.00	0.000	5,636.76	960.24	-289.55	295.56	0.00	0.00	0.00
5,900.00	0.00	0.000	5,736.76	960.24	-289.55	295.56	0.00	0.00	0.00
5,974.78	0.00	0.000	5,811.54	960.24	-289.55	295.56	0.00	0.00	0.00
<b>Start DLS 12.00 TFO 270.36</b>									
6,000.00	3.03	270.359	5,836.75	960.24	-290.22	296.23	12.00	12.00	0.00
6,100.00	15.03	270.359	5,935.33	960.34	-305.88	311.89	12.00	12.00	0.00
6,200.00	27.03	270.359	6,028.50	960.57	-341.69	347.70	12.00	12.00	0.00
6,300.00	39.03	270.359	6,112.19	960.91	-396.09	402.10	12.00	12.00	0.00
6,400.00	51.03	270.359	6,182.74	961.35	-466.70	472.72	12.00	12.00	0.00
6,500.00	63.03	270.359	6,237.06	961.88	-550.44	556.45	12.00	12.00	0.00
6,600.00	75.03	270.359	6,272.79	962.46	-643.64	649.66	12.00	12.00	0.00
6,700.00	87.03	270.359	6,288.36	963.08	-742.23	748.25	12.00	12.00	0.00
6,721.09	89.56	270.359	6,288.99	963.21	-763.31	769.33	12.00	12.00	0.00
<b>Start 9703.59 hold at 6721.09 MD</b>									
6,800.00	89.56	270.359	6,289.60	963.71	-842.22	848.24	0.00	0.00	0.00
6,900.00	89.56	270.359	6,290.37	964.33	-942.21	948.24	0.00	0.00	0.00
7,000.00	89.56	270.359	6,291.15	964.96	-1,042.21	1,048.23	0.00	0.00	0.00
7,100.00	89.56	270.359	6,291.92	965.59	-1,142.20	1,148.23	0.00	0.00	0.00
7,200.00	89.56	270.359	6,292.69	966.22	-1,242.20	1,248.23	0.00	0.00	0.00
7,300.00	89.56	270.359	6,293.47	966.84	-1,342.19	1,348.23	0.00	0.00	0.00
7,400.00	89.56	270.359	6,294.24	967.47	-1,442.19	1,448.22	0.00	0.00	0.00
7,500.00	89.56	270.359	6,295.01	968.10	-1,542.18	1,548.22	0.00	0.00	0.00
7,600.00	89.56	270.359	6,295.78	968.72	-1,642.18	1,648.22	0.00	0.00	0.00
7,700.00	89.56	270.359	6,296.56	969.35	-1,742.17	1,748.21	0.00	0.00	0.00
7,800.00	89.56	270.359	6,297.33	969.98	-1,842.17	1,848.21	0.00	0.00	0.00
7,900.00	89.56	270.359	6,298.10	970.61	-1,942.16	1,948.21	0.00	0.00	0.00
8,000.00	89.56	270.359	6,298.88	971.23	-2,042.16	2,048.20	0.00	0.00	0.00
8,100.00	89.56	270.359	6,299.65	971.86	-2,142.15	2,148.20	0.00	0.00	0.00
8,200.00	89.56	270.359	6,300.42	972.49	-2,242.15	2,248.20	0.00	0.00	0.00
8,300.00	89.56	270.359	6,301.20	973.11	-2,342.14	2,348.20	0.00	0.00	0.00
8,400.00	89.56	270.359	6,301.97	973.74	-2,442.14	2,448.19	0.00	0.00	0.00
8,500.00	89.56	270.359	6,302.74	974.37	-2,542.13	2,548.19	0.00	0.00	0.00
8,600.00	89.56	270.359	6,303.51	975.00	-2,642.13	2,648.19	0.00	0.00	0.00
8,700.00	89.56	270.359	6,304.29	975.62	-2,742.12	2,748.18	0.00	0.00	0.00
8,800.00	89.56	270.359	6,305.06	976.25	-2,842.12	2,848.18	0.00	0.00	0.00
8,900.00	89.56	270.359	6,305.83	976.88	-2,942.11	2,948.18	0.00	0.00	0.00
9,000.00	89.56	270.359	6,306.61	977.51	-3,042.11	3,048.18	0.00	0.00	0.00
9,100.00	89.56	270.359	6,307.38	978.13	-3,142.11	3,148.17	0.00	0.00	0.00
9,200.00	89.56	270.359	6,308.15	978.76	-3,242.10	3,248.17	0.00	0.00	0.00
9,300.00	89.56	270.359	6,308.93	979.39	-3,342.10	3,348.17	0.00	0.00	0.00
9,400.00	89.56	270.359	6,309.70	980.01	-3,442.09	3,448.16	0.00	0.00	0.00

<b>Database:</b>	Casper District	<b>Local Co-ordinate Reference:</b>	Well Anschutz Equus Farms 4-62-29-2532CN
<b>Company:</b>	Bill Barrett Corp.	<b>TVD Reference:</b>	GL 4624' & KB 20' @ 4644.00ft
<b>Project:</b>	Weld County, CO NAD 83	<b>MD Reference:</b>	GL 4624' & KB 20' @ 4644.00ft
<b>Site:</b>	Anschutz Equus Farms 4-62-28_27 NWSW Pad	<b>North Reference:</b>	True
<b>Well:</b>	Anschutz Equus Farms 4-62-29-2532CN	<b>Survey Calculation Method:</b>	Minimum Curvature
<b>Wellbore:</b>	OH		
<b>Design:</b>	Plan 2		

Planned Survey										
Measured Depth (ft)	Inclination (°)	Azimuth (°)	Vertical Depth (ft)	+N/-S (ft)	+E/-W (ft)	Vertical Section (ft)	Dogleg Rate (°/100ft)	Build Rate (°/100ft)	Turn Rate (°/100ft)	
9,500.00	89.56	270.359	6,310.47	980.64	-3,542.09	3,548.16	0.00	0.00	0.00	
9,600.00	89.56	270.359	6,311.24	981.27	-3,642.08	3,648.16	0.00	0.00	0.00	
9,700.00	89.56	270.359	6,312.02	981.90	-3,742.08	3,748.15	0.00	0.00	0.00	
9,800.00	89.56	270.359	6,312.79	982.52	-3,842.07	3,848.15	0.00	0.00	0.00	
9,900.00	89.56	270.359	6,313.56	983.15	-3,942.07	3,948.15	0.00	0.00	0.00	
10,000.00	89.56	270.359	6,314.34	983.78	-4,042.06	4,048.15	0.00	0.00	0.00	
10,100.00	89.56	270.359	6,315.11	984.40	-4,142.06	4,148.14	0.00	0.00	0.00	
10,200.00	89.56	270.359	6,315.88	985.03	-4,242.05	4,248.14	0.00	0.00	0.00	
10,300.00	89.56	270.359	6,316.66	985.66	-4,342.05	4,348.14	0.00	0.00	0.00	
10,400.00	89.56	270.359	6,317.43	986.29	-4,442.04	4,448.13	0.00	0.00	0.00	
10,500.00	89.56	270.359	6,318.20	986.91	-4,542.04	4,548.13	0.00	0.00	0.00	
10,600.00	89.56	270.359	6,318.97	987.54	-4,642.03	4,648.13	0.00	0.00	0.00	
10,700.00	89.56	270.359	6,319.75	988.17	-4,742.03	4,748.12	0.00	0.00	0.00	
10,800.00	89.56	270.359	6,320.52	988.80	-4,842.02	4,848.12	0.00	0.00	0.00	
10,900.00	89.56	270.359	6,321.29	989.42	-4,942.02	4,948.12	0.00	0.00	0.00	
11,000.00	89.56	270.359	6,322.07	990.05	-5,042.01	5,048.12	0.00	0.00	0.00	
11,100.00	89.56	270.359	6,322.84	990.68	-5,142.01	5,148.11	0.00	0.00	0.00	
11,200.00	89.56	270.359	6,323.61	991.30	-5,242.00	5,248.11	0.00	0.00	0.00	
11,300.00	89.56	270.359	6,324.39	991.93	-5,342.00	5,348.11	0.00	0.00	0.00	
11,400.00	89.56	270.359	6,325.16	992.56	-5,441.99	5,448.10	0.00	0.00	0.00	
11,500.00	89.56	270.359	6,325.93	993.19	-5,541.99	5,548.10	0.00	0.00	0.00	
11,600.00	89.56	270.359	6,326.70	993.81	-5,641.98	5,648.10	0.00	0.00	0.00	
11,700.00	89.56	270.359	6,327.48	994.44	-5,741.98	5,748.09	0.00	0.00	0.00	
11,800.00	89.56	270.359	6,328.25	995.07	-5,841.97	5,848.09	0.00	0.00	0.00	
11,900.00	89.56	270.359	6,329.02	995.69	-5,941.97	5,948.09	0.00	0.00	0.00	
12,000.00	89.56	270.359	6,329.80	996.32	-6,041.96	6,048.09	0.00	0.00	0.00	
12,100.00	89.56	270.359	6,330.57	996.95	-6,141.96	6,148.08	0.00	0.00	0.00	
12,200.00	89.56	270.359	6,331.34	997.58	-6,241.95	6,248.08	0.00	0.00	0.00	
12,300.00	89.56	270.359	6,332.12	998.20	-6,341.95	6,348.08	0.00	0.00	0.00	
12,400.00	89.56	270.359	6,332.89	998.83	-6,441.94	6,448.07	0.00	0.00	0.00	
12,500.00	89.56	270.359	6,333.66	999.46	-6,541.94	6,548.07	0.00	0.00	0.00	
12,600.00	89.56	270.359	6,334.44	1,000.08	-6,641.93	6,648.07	0.00	0.00	0.00	
12,700.00	89.56	270.359	6,335.21	1,000.71	-6,741.93	6,748.06	0.00	0.00	0.00	
12,800.00	89.56	270.359	6,335.98	1,001.34	-6,841.92	6,848.06	0.00	0.00	0.00	
12,900.00	89.56	270.359	6,336.75	1,001.97	-6,941.92	6,948.06	0.00	0.00	0.00	
13,000.00	89.56	270.359	6,337.53	1,002.59	-7,041.91	7,048.06	0.00	0.00	0.00	
13,100.00	89.56	270.359	6,338.30	1,003.22	-7,141.91	7,148.05	0.00	0.00	0.00	
13,200.00	89.56	270.359	6,339.07	1,003.85	-7,241.90	7,248.05	0.00	0.00	0.00	
13,300.00	89.56	270.359	6,339.85	1,004.48	-7,341.90	7,348.05	0.00	0.00	0.00	
13,400.00	89.56	270.359	6,340.62	1,005.10	-7,441.89	7,448.04	0.00	0.00	0.00	
13,500.00	89.56	270.359	6,341.39	1,005.73	-7,541.89	7,548.04	0.00	0.00	0.00	
13,600.00	89.56	270.359	6,342.17	1,006.36	-7,641.88	7,648.04	0.00	0.00	0.00	
13,700.00	89.56	270.359	6,342.94	1,006.98	-7,741.88	7,748.03	0.00	0.00	0.00	
13,800.00	89.56	270.359	6,343.71	1,007.61	-7,841.87	7,848.03	0.00	0.00	0.00	
13,900.00	89.56	270.359	6,344.48	1,008.24	-7,941.87	7,948.03	0.00	0.00	0.00	
14,000.00	89.56	270.359	6,345.26	1,008.87	-8,041.86	8,048.03	0.00	0.00	0.00	
14,100.00	89.56	270.359	6,346.03	1,009.49	-8,141.86	8,148.02	0.00	0.00	0.00	
14,200.00	89.56	270.359	6,346.80	1,010.12	-8,241.85	8,248.02	0.00	0.00	0.00	
14,300.00	89.56	270.359	6,347.58	1,010.75	-8,341.85	8,348.02	0.00	0.00	0.00	
14,400.00	89.56	270.359	6,348.35	1,011.37	-8,441.84	8,448.01	0.00	0.00	0.00	
14,500.00	89.56	270.359	6,349.12	1,012.00	-8,541.84	8,548.01	0.00	0.00	0.00	
14,600.00	89.56	270.359	6,349.90	1,012.63	-8,641.83	8,648.01	0.00	0.00	0.00	
14,700.00	89.56	270.359	6,350.67	1,013.26	-8,741.83	8,748.00	0.00	0.00	0.00	

<b>Database:</b>	Casper District	<b>Local Co-ordinate Reference:</b>	Well Anschutz Equus Farms 4-62-29-2532CN
<b>Company:</b>	Bill Barrett Corp.	<b>TVD Reference:</b>	GL 4624' & KB 20' @ 4644.00ft
<b>Project:</b>	Weld County, CO NAD 83	<b>MD Reference:</b>	GL 4624' & KB 20' @ 4644.00ft
<b>Site:</b>	Anschutz Equus Farms 4-62-28_27 NWSW Pad	<b>North Reference:</b>	True
<b>Well:</b>	Anschutz Equus Farms 4-62-29-2532CN	<b>Survey Calculation Method:</b>	Minimum Curvature
<b>Wellbore:</b>	OH		
<b>Design:</b>	Plan 2		

**Planned Survey**

Measured Depth (ft)	Inclination (°)	Azimuth (°)	Vertical Depth (ft)	+N/-S (ft)	+E/-W (ft)	Vertical Section (ft)	Dogleg Rate (°/100ft)	Build Rate (°/100ft)	Turn Rate (°/100ft)
14,800.00	89.56	270.359	6,351.44	1,013.88	-8,841.82	8,848.00	0.00	0.00	0.00
14,900.00	89.56	270.359	6,352.21	1,014.51	-8,941.82	8,948.00	0.00	0.00	0.00
15,000.00	89.56	270.359	6,352.99	1,015.14	-9,041.81	9,048.00	0.00	0.00	0.00
15,100.00	89.56	270.359	6,353.76	1,015.77	-9,141.81	9,147.99	0.00	0.00	0.00
15,200.00	89.56	270.359	6,354.53	1,016.39	-9,241.80	9,247.99	0.00	0.00	0.00
15,300.00	89.56	270.359	6,355.31	1,017.02	-9,341.80	9,347.99	0.00	0.00	0.00
15,400.00	89.56	270.359	6,356.08	1,017.65	-9,441.79	9,447.98	0.00	0.00	0.00
15,500.00	89.56	270.359	6,356.85	1,018.27	-9,541.79	9,547.98	0.00	0.00	0.00
15,600.00	89.56	270.359	6,357.63	1,018.90	-9,641.78	9,647.98	0.00	0.00	0.00
15,700.00	89.56	270.359	6,358.40	1,019.53	-9,741.78	9,747.97	0.00	0.00	0.00
15,800.00	89.56	270.359	6,359.17	1,020.16	-9,841.77	9,847.97	0.00	0.00	0.00
15,900.00	89.56	270.359	6,359.94	1,020.78	-9,941.77	9,947.97	0.00	0.00	0.00
16,000.00	89.56	270.359	6,360.72	1,021.41	-10,041.76	10,047.97	0.00	0.00	0.00
16,100.00	89.56	270.359	6,361.49	1,022.04	-10,141.76	10,147.96	0.00	0.00	0.00
16,200.00	89.56	270.359	6,362.26	1,022.66	-10,241.75	10,247.96	0.00	0.00	0.00
16,300.00	89.56	270.359	6,363.04	1,023.29	-10,341.75	10,347.96	0.00	0.00	0.00
16,400.00	89.56	270.359	6,363.81	1,023.92	-10,441.74	10,447.95	0.00	0.00	0.00
16,424.69	89.56	270.359	6,364.00	1,024.07	-10,466.43	10,472.64	0.00	0.00	0.00
TD at 16424.69									

**Design Targets**

Target Name	Dip Angle (°)	Dip Dir. (°)	TVD (ft)	+N/-S (ft)	+E/-W (ft)	Northing (usft)	Easting (usft)	Latitude	Longitude
- hit/miss target									
- Shape									
4-62-29-2532CN LP	0.00	0.000	6,289.00	963.22	-763.31	1,348,513.73	3,323,574.73	40° 17' 3.340 N	104° 20' 24.511 W
- plan misses target center by 0.01ft at 6721.08ft MD (6288.99 TVD, 963.21 N, -763.31 E)									
- Point									
4-62-29-2532CN PBHL	0.00	0.000	6,364.00	1,024.07	-10,466.43	1,348,447.37	3,313,871.66	40° 17' 3.919 N	104° 22' 29.719 W
- plan hits target center									
- Point									

**Plan Annotations**

Measured Depth (ft)	Vertical Depth (ft)	Local Coordinates		Comment
		+N/-S (ft)	+E/-W (ft)	
1,000.00	1,000.00	0.00	0.00	Start Build 2.00
2,301.08	2,256.81	278.04	-83.84	Start 300.26 hold at 2301.08 MD
2,601.34	2,526.63	404.16	-121.87	Start Drop -1.00
5,203.49	5,040.25	960.24	-289.55	Start 771.29 hold at 5203.49 MD
5,974.78	5,811.54	960.24	-289.55	Start DLS 12.00 TFO 270.36
6,721.09	6,288.99	963.21	-763.31	Start 9703.59 hold at 6721.09 MD
16,424.69	6,364.00	1,024.07	-10,466.43	TD at 16424.69