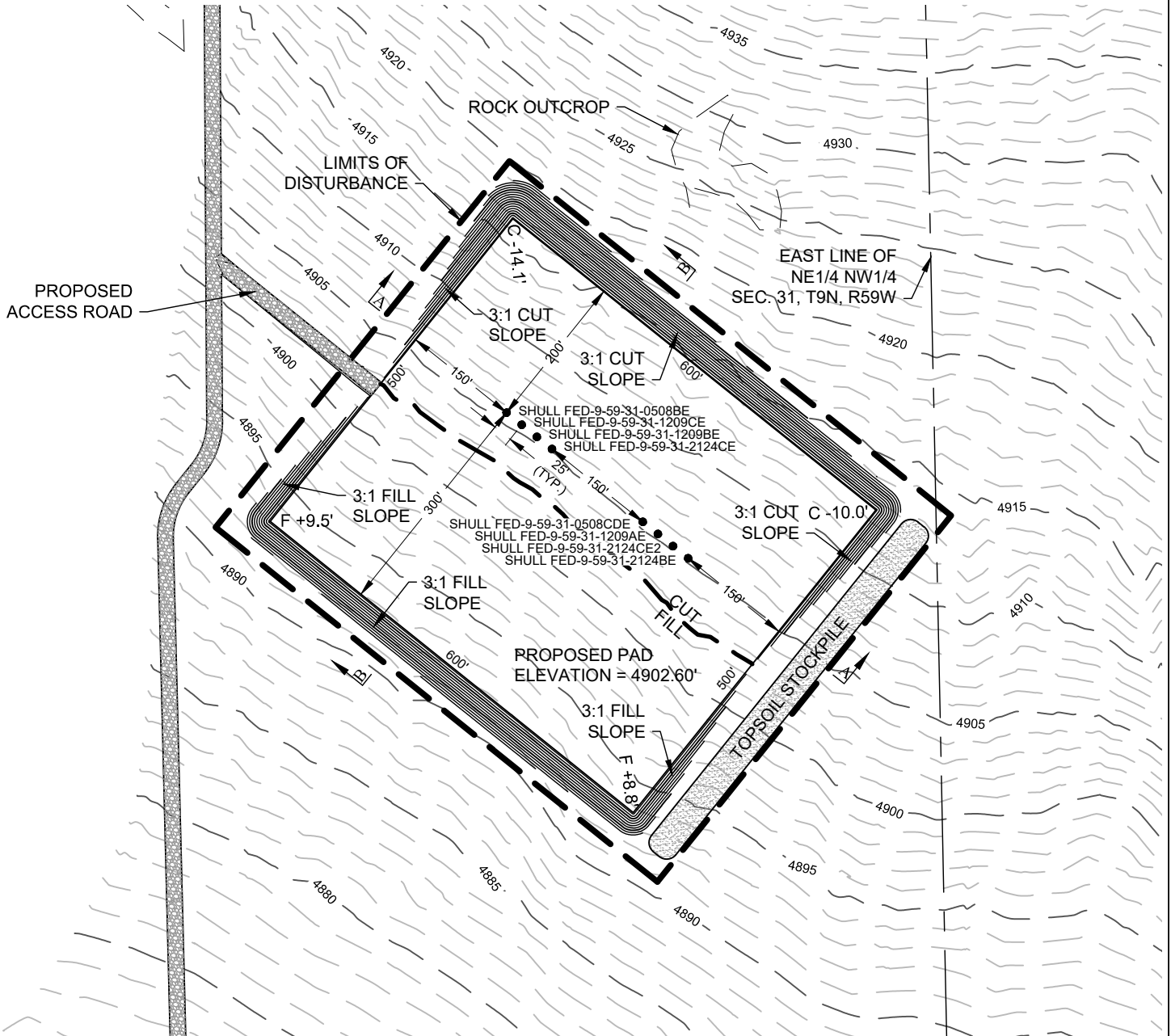
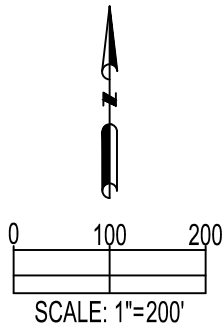


SHULL PAD 9-59-31-NENW PAD LAYOUT



NOTES:

1. A COMPLETE UTILITIES LOCATION IS RECOMMENDED BEFORE CONSTRUCTION.
2. GEOGRAPHIC POSITIONS/COORDINATES SHOWN HEREON ARE IN NAD83 DATUM.
3. EARTHWORK QUANTITIES ARE APPROXIMATE & FOR INFORMATION ONLY. 6" OF TOPSOIL HAS BEEN SUBTRACTED FROM EXISTING SURFACE PRIOR TO PERFORMING EARTHWORK CALCULATIONS.
4. STOCKPILES ARE ASSUMED TO BE 10' IN HEIGHT WITH 2:1 SIDE SLOPES.
5. THIS ILLUSTRATION DOES NOT REPRESENT A MONUMENTED LAND SURVEY AND THEREFORE CANNOT BE RELIED UPON TO DETERMINE OWNERSHIP.
6. THIS ILLUSTRATION IS INTENDED FOR REFERENCE USE ONLY AND SHOULD NOT BE USED TO ESTABLISH, TRANSFER, OR DISPUTE BOUNDARIES.
7. PARCEL LINES DEPICTED HEREON MAY NOT HAVE BEEN FIELD VERIFIED AND MAY BE BASED UPON PUBLICLY AVAILABLE DATA.



SITE QUANTITIES

FINISHED GRADE ELEVATION	4902.60'
TOTAL CUT FOR WELL PAD	38,005 CY
FILL FOR WELL PAD	34,550 CY
10% FILL FACTOR	3,455 CY
TOTAL FILL	38,005 CY
NET EXCESS MATERIAL	0 CY
TOPSOIL FROM GRADED AREA	6,760 CY
TOTAL DISTURBANCE AREA	10.14 ACRES

PREPARED BY:



FIELD DATE:

02-24-16

DRAWING DATE:

06-29-17

BY:

KAD

CHECKED BY:

MLP

SITE NAME:

SHULL PAD 9-59-31-NENW

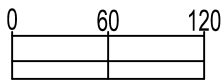
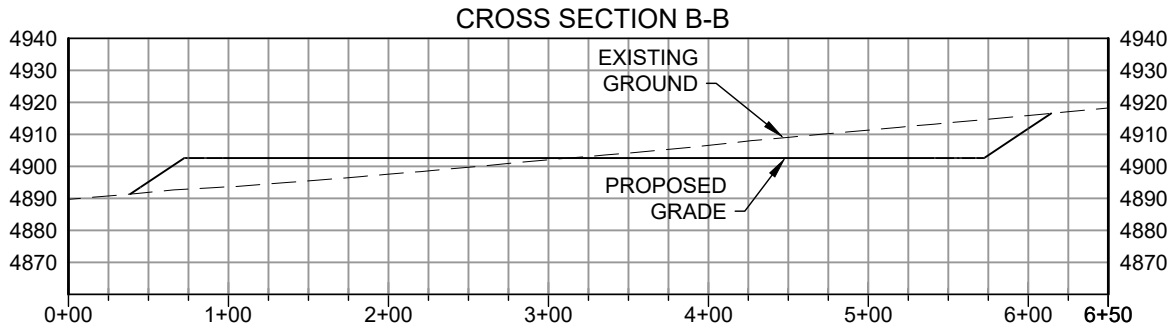
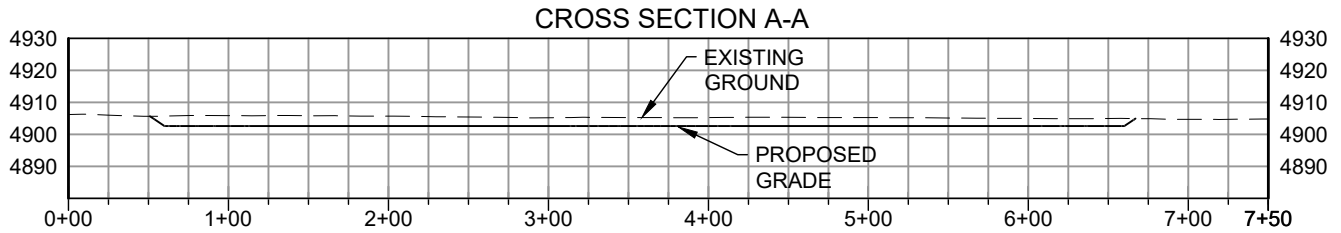
SURFACE LOCATION:

NE 1/4 NW 1/4 SEC. 31, T9N, R59W, 6TH P.M.
WELD COUNTY, COLORADO

PREPARED FOR:



SHULL PAD 9-59-31-NENW CROSS SECTIONS



SCALE: 1"=120'
VERT SCALE: 1"=60'

NOTE:

1. A COMPLETE UTILITIES LOCATION IS RECOMMENDED BEFORE CONSTRUCTION.
2. GEOGRAPHIC POSITIONS/COORDINATES SHOWN HEREON ARE IN NAD83 DATUM.
3. THIS ILLUSTRATION DOES NOT REPRESENT A MONUMENTED LAND SURVEY AND THEREFORE CANNOT BE RELIED UPON TO DETERMINE OWNERSHIP.
4. THIS ILLUSTRATION IS INTENDED FOR REFERENCE USE ONLY AND SHOULD NOT BE USED TO ESTABLISH, TRANSFER, OR DISPUTE BOUNDARIES.
5. PARCEL LINES DEPICTED HEREON MAY NOT HAVE BEEN FIELD VERIFIED AND MAY BE BASED UPON PUBLICLY AVAILABLE DATA.

PREPARED BY:



FIELD DATE:

02-24-16

DRAWING DATE:

06-29-17

BY:

KAD

CHECKED BY:

MLP

SITE NAME:

SHULL PAD 9-59-31-NENW

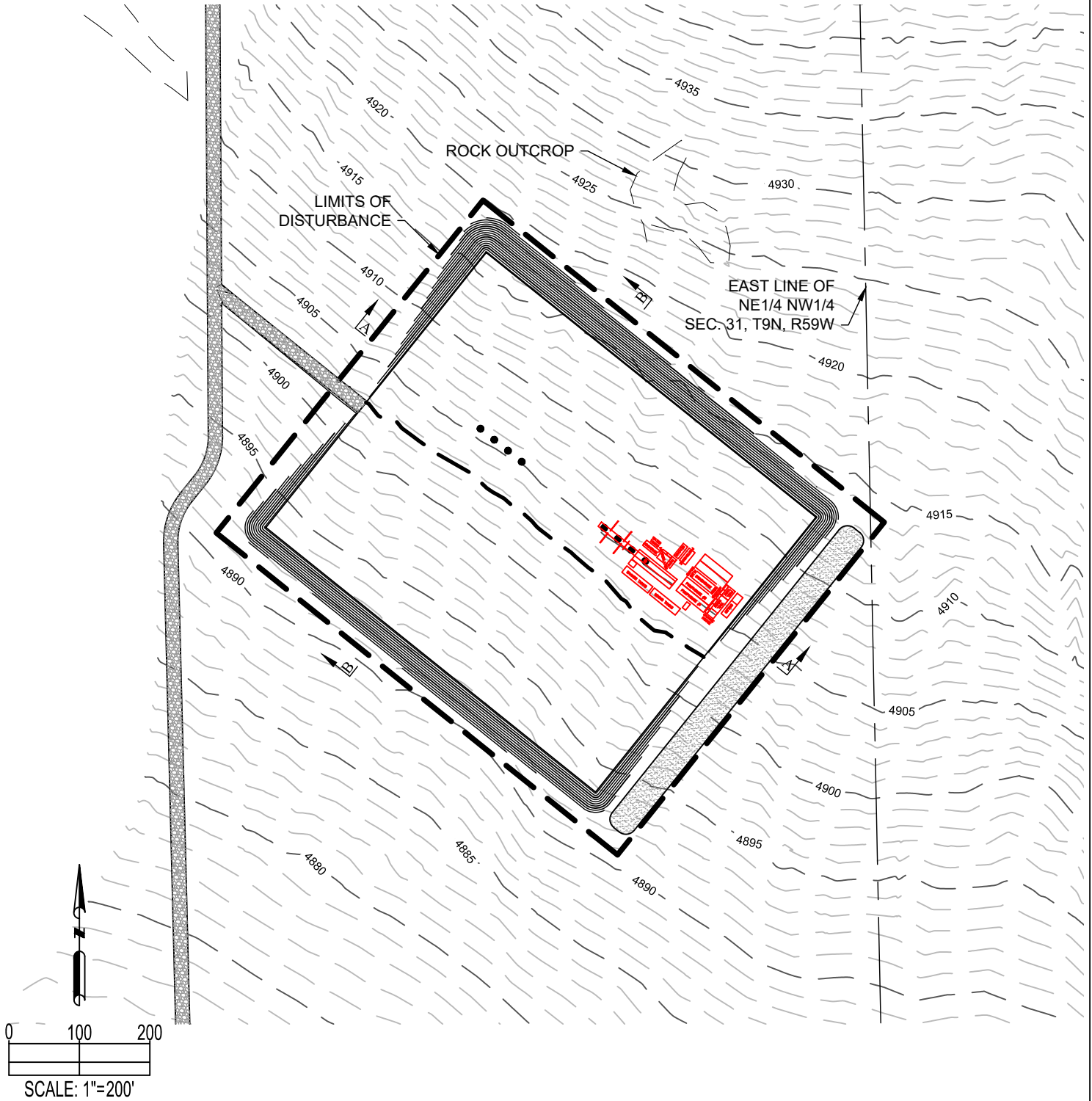
SURFACE LOCATION:

NE 1/4 NW 1/4 SEC. 31, T9N, R59W, 6TH P.M.
WELD COUNTY, COLORADO

PREPARED FOR:



SHULL PAD 9-59-31-NENW RIG LAYOUT



- NOTE:
1. A COMPLETE UTILITIES LOCATION IS RECOMMENDED BEFORE CONSTRUCTION.
 2. GEOGRAPHIC POSITIONS/COORDINATES SHOWN HEREON ARE IN NAD83 DATUM.
 3. THIS ILLUSTRATION DOES NOT REPRESENT A MONUMENTED LAND SURVEY AND THEREFORE CANNOT BE RELIED UPON TO DETERMINE OWNERSHIP.
 4. THIS ILLUSTRATION IS INTENDED FOR REFERENCE USE ONLY AND SHOULD NOT BE USED TO ESTABLISH, TRANSFER, OR DISPUTE BOUNDARIES.
 5. PARCEL LINES DEPICTED HEREON MAY NOT HAVE BEEN FIELD VERIFIED AND MAY BE BASED UPON PUBLICLY AVAILABLE DATA.

PREPARED BY:



FIELD DATE:

02-24-16

DRAWING DATE:

06-29-17

BY:

KAD

CHECKED BY:

MLP

SITE NAME:

SHULL PAD 9-59-31-NENW

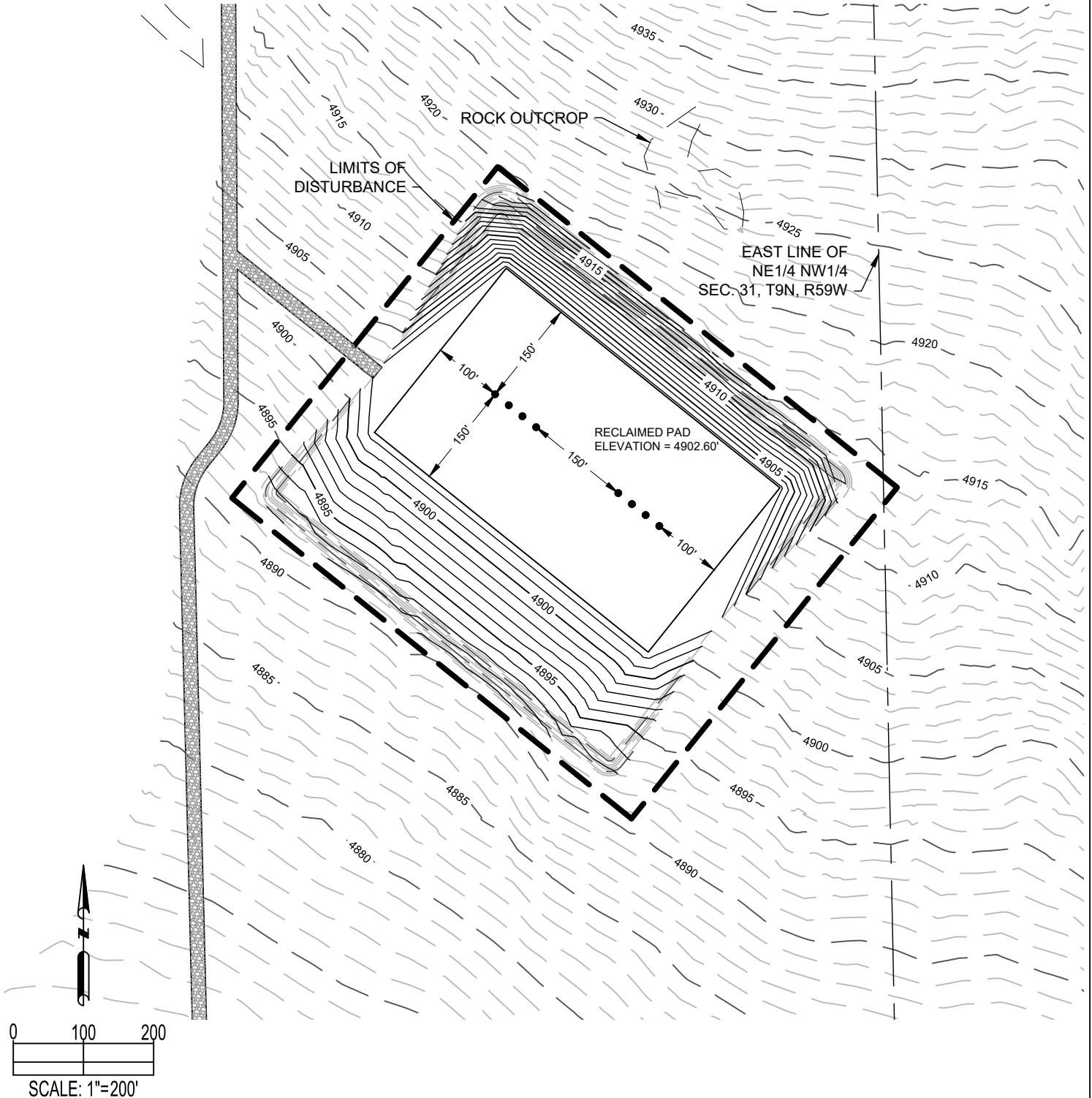
SURFACE LOCATION:

NE 1/4 NW 1/4 SEC. 31, T9N, R59W, 6TH P.M.
WELD COUNTY, COLORADO

PREPARED FOR:



SHULL PAD 9-59-31-NENW RECLAMATION LAYOUT



- NOTE:
1. A COMPLETE UTILITIES LOCATION IS RECOMMENDED BEFORE CONSTRUCTION.
 2. GEOGRAPHIC POSITIONS/COORDINATES SHOWN HEREON ARE IN NAD83 DATUM.
 3. THIS ILLUSTRATION DOES NOT REPRESENT A MONUMENTED LAND SURVEY AND THEREFORE CANNOT BE RELIED UPON TO DETERMINE OWNERSHIP.
 4. THIS ILLUSTRATION IS INTENDED FOR REFERENCE USE ONLY AND SHOULD NOT BE USED TO ESTABLISH, TRANSFER, OR DISPUTE BOUNDARIES.
 5. PARCEL LINES DEPICTED HEREON MAY NOT HAVE BEEN FIELD VERIFIED AND MAY BE BASED UPON PUBLICLY AVAILABLE DATA.

PREPARED BY:



FIELD DATE:

02-24-16

DRAWING DATE:

06-29-17

BY:

KAD

CHECKED BY:

MLP

SITE NAME:

SHULL PAD 9-59-31-NENW

SURFACE LOCATION:

NE 1/4 NW 1/4 SEC. 31, T9N, R59W, 6TH P.M.
WELD COUNTY, COLORADO

PREPARED FOR:

