



Great Western Operating
Company, LLC
1801 Broadway, Suite 500
Denver, CO 80202

303.398.0302
866.742.1784 Fax
info@gwogco.com
www.gwogco.com

June 16, 2017

Colorado Oil and Gas Conservation Commission
1120 Lincoln Street, Suite 801
Denver, CO 80203

RE: Proposed Wellbore Spacing Unit
Raindance FD 20-239HN
Niobrara New Drill
NENE Sec. 30, Township 6N, Range 67W
Weld County, Colorado

Dear Director Lepore,

Great Western Operating Company, LLC (Great Western) is planning to drill the above captioned well in accordance with the provisions of Colorado Oil and Gas Conservation Commission (COGCC) Rule 318A.e.

Great Western's proposed wellbore spacing unit consists of:

Township 6 North, Range 67 West (Weld County):
Section 19: NE4SE4
Section 20: N2S2

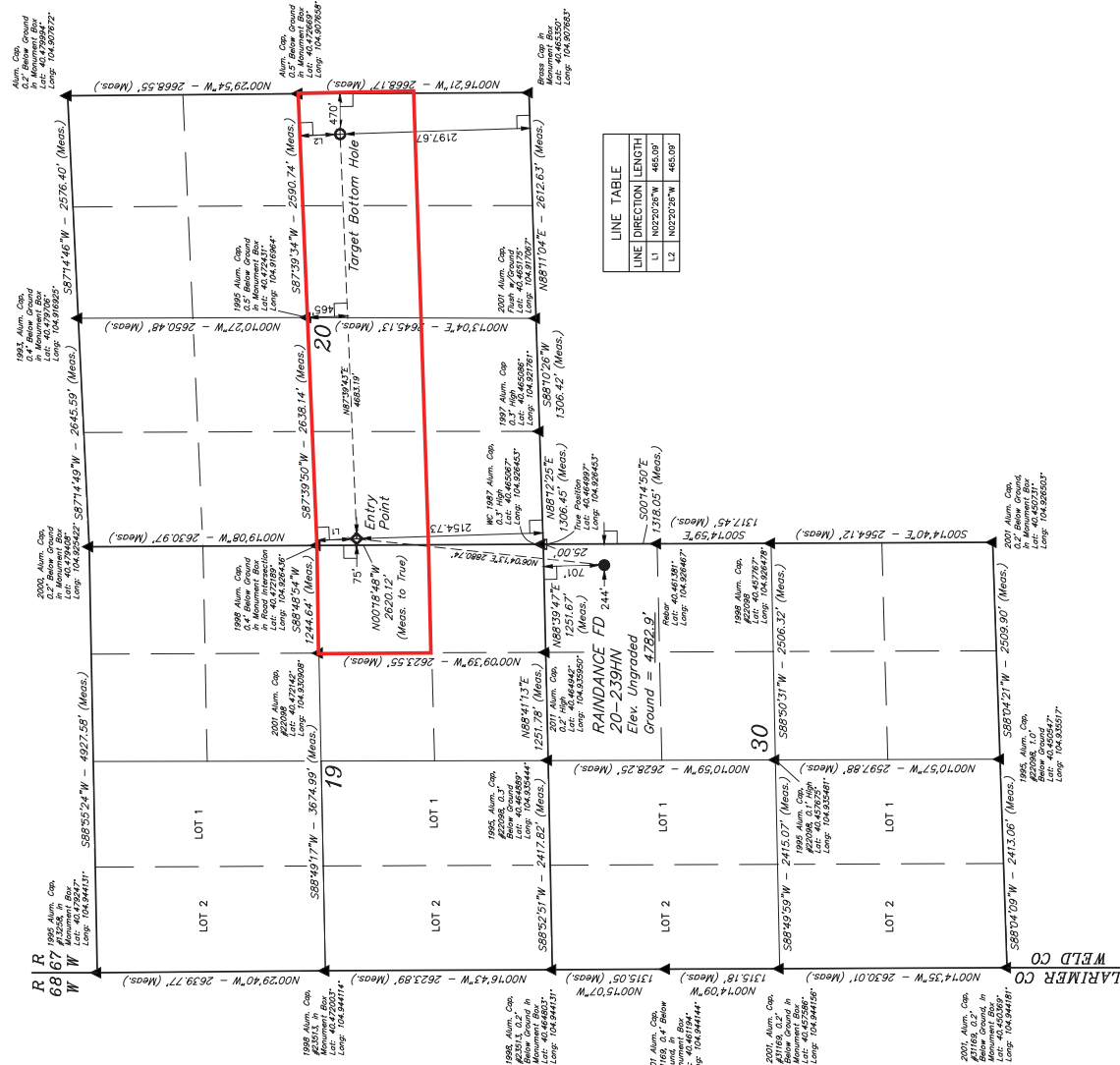
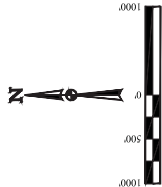
Total Acres: 200

The 30 day notification time period has passed and we have not yet received any objections to such well locations or proposed spacing unit, therefore Great Western hereby requests the Director to approve the above mentioned well. Great Western respectfully requests the COGCC review the enclosed map illustrating the proposed wellbore spacing unit.

Respectfully,

Ashley Noonan

Ashley Noonan
Senior Regulatory Analyst
Great Western Operating Company, LLC



LINE TABLE	
LINE	DIRECTION LENGTH
L1	N02°20'26" W 465.09'
L2	N02°20'26" W 465.09'

LEGEND:
= 90° SWHEAL
= PROPOSED WELLHEAD
= TARGET BOTTOM HOLE
= SECTION CORNERS LOCATED (NAD 83)
= SECTION CORNERS RE-ESTABLISHED
(Not Set on Ground) (NAD 83)

PROPP = 1.3	
NAD 83 SURFACE LOCATION	NAD 83 ENTRY POINT
POINT OF BEGINNING (NAD 83) LONGITUDE = 104°53'42" W (104.892330) LATITUDE = 40°28'13" N (40.469860)	POINT OF BEGINNING (NAD 83) LONGITUDE = 104°53'42" W (104.892330) LATITUDE = 40°28'13" N (40.469860)
NAD 83 SURFACE LOCATION	NAD 83 ENTRY POINT
POINT OF BEGINNING (NAD 83) LONGITUDE = 104°53'42" W (104.892330) LATITUDE = 40°28'13" N (40.469860)	POINT OF BEGINNING (NAD 83) LONGITUDE = 104°53'42" W (104.892330) LATITUDE = 40°28'13" N (40.469860)

