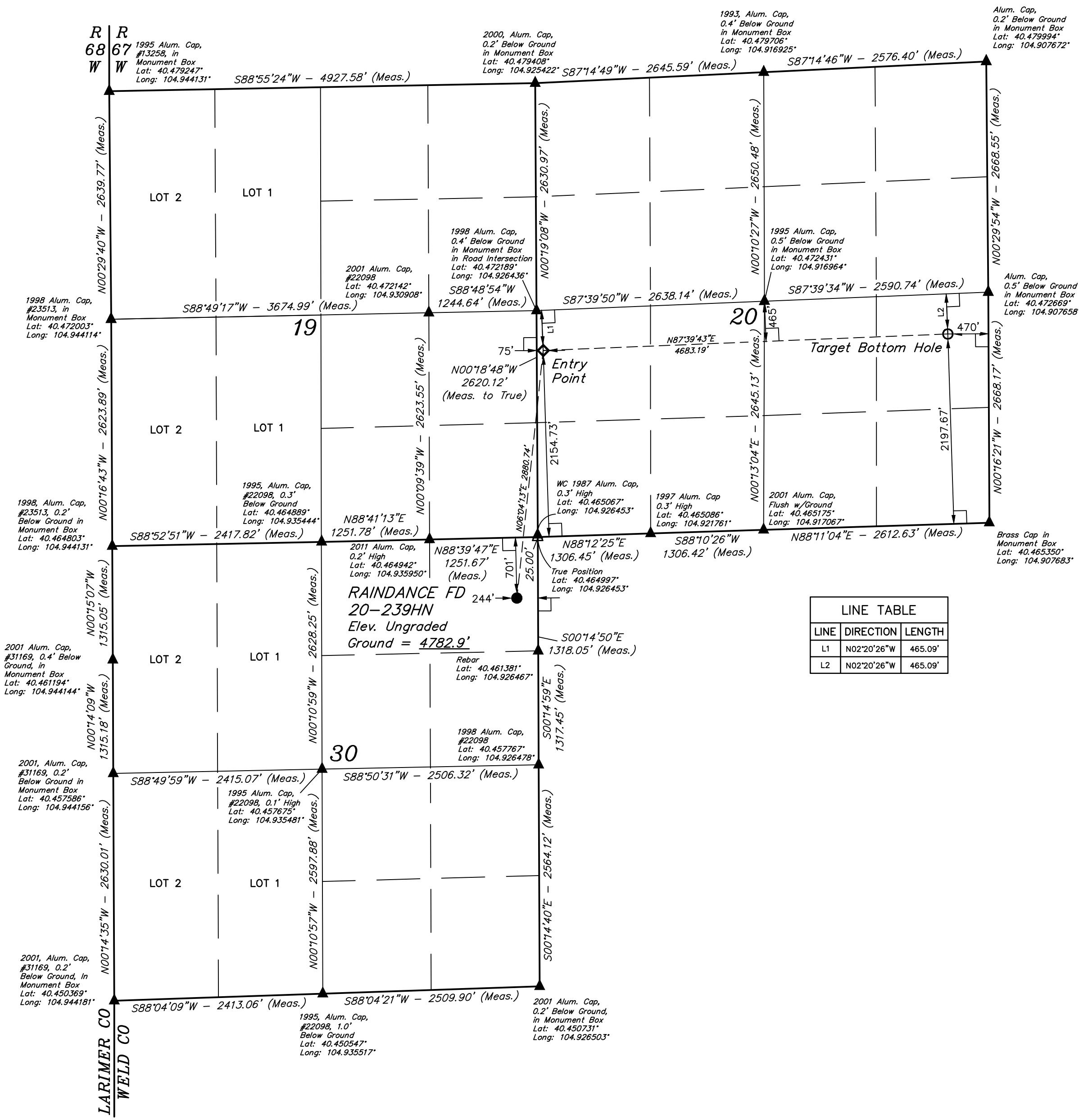
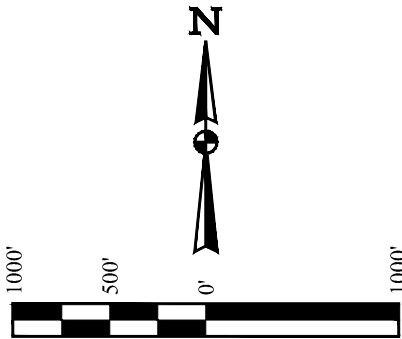


T6N, R67W, 6th P.M.

GREAT WESTERN OPERATING COMPANY

RAINDANCE FD 20-239HN
NE 1/4 NE 1/4, SECTION 30, T6N, R67W, 6th P.M.
WELD COUNTY, COLORADO

BASIS OF BEARINGS
BASIS OF ELEVATION
USGS COOPERATIVE BASE NETWORK CONTROL STATION,
DESIGNATION "VERMILYEA". NGS DATA SHEET LISTS THE
NAVD 88 ELEVATION AS BEING 5026 FEET.



LEGEND:
└─┘ = 90° SYMBOL
● = PROPOSED WELLHEAD.
○ = TARGET BOTTOM HOLE.
◇ = ENTRY POINT.
▲ = SECTION CORNERS LOCATED. (NAD 83)
△ = SECTION CORNERS RE-ESTABLISHED.
(Not Set on Ground.) (NAD 83)

CERTIFICATE OF RECORDING
THIS IS TO CERTIFY THAT THE ABOVE DESCRIBED SURVEY WAS MADE IN ACCORDANCE WITH THE REQUIREMENTS OF THE COLORADO SURVEYING ACT, AND THAT THE SAME ARE TRUE AND CORRECT TO THE BEST OF MY KNOWLEDGE AND BELIEF.

REGISTERED LAND SURVEYOR
REGISTRATION NO. 28285
STATE OF COLORADO

REV: 3 10-26-16 K.B. (SHL, EP, TBH & NAME CHANGE)

PDOP = 1.3

NAD 83 (SURFACE LOCATION)	NAD 83 (ENTRY POINT)	NAD 83 (TARGET BOTTOM HOLE)
LATITUDE = 40°27'47.03" (40.463064)	LATITUDE = 40°28'15.30" (40.470917)	LATITUDE = 40°28'16.86" (40.471350)
LONGITUDE = 104°55'38.42" (104.927339)	LONGITUDE = 104°55'34.21" (104.926169)	LONGITUDE = 104°54'33.67" (104.909353)
NAD 27 (SURFACE LOCATION)	NAD 27 (ENTRY POINT)	NAD 27 (TARGET BOTTOM HOLE)
LATITUDE = 40°27'47.09" (40.463081)	LATITUDE = 40°28'15.37" (40.470936)	LATITUDE = 40°28'16.93" (40.471369)
LONGITUDE = 104°55'36.51" (104.926808)	LONGITUDE = 104°55'32.31" (104.925642)	LONGITUDE = 104°54'31.77" (104.908825)



UINTEAH
ENGINEERING & LAND SURVEYING

UELS, LLC
Corporate Office * 85 South 200 East
Vernal, UT 84078 * (435) 789-1017

SURVEYED BY	CHAD MEIERS, J.C.	10-14-16	SCALE
DRAWN BY	K.B.	02-25-16	1" = 1000'

WELL LOCATION PLAT