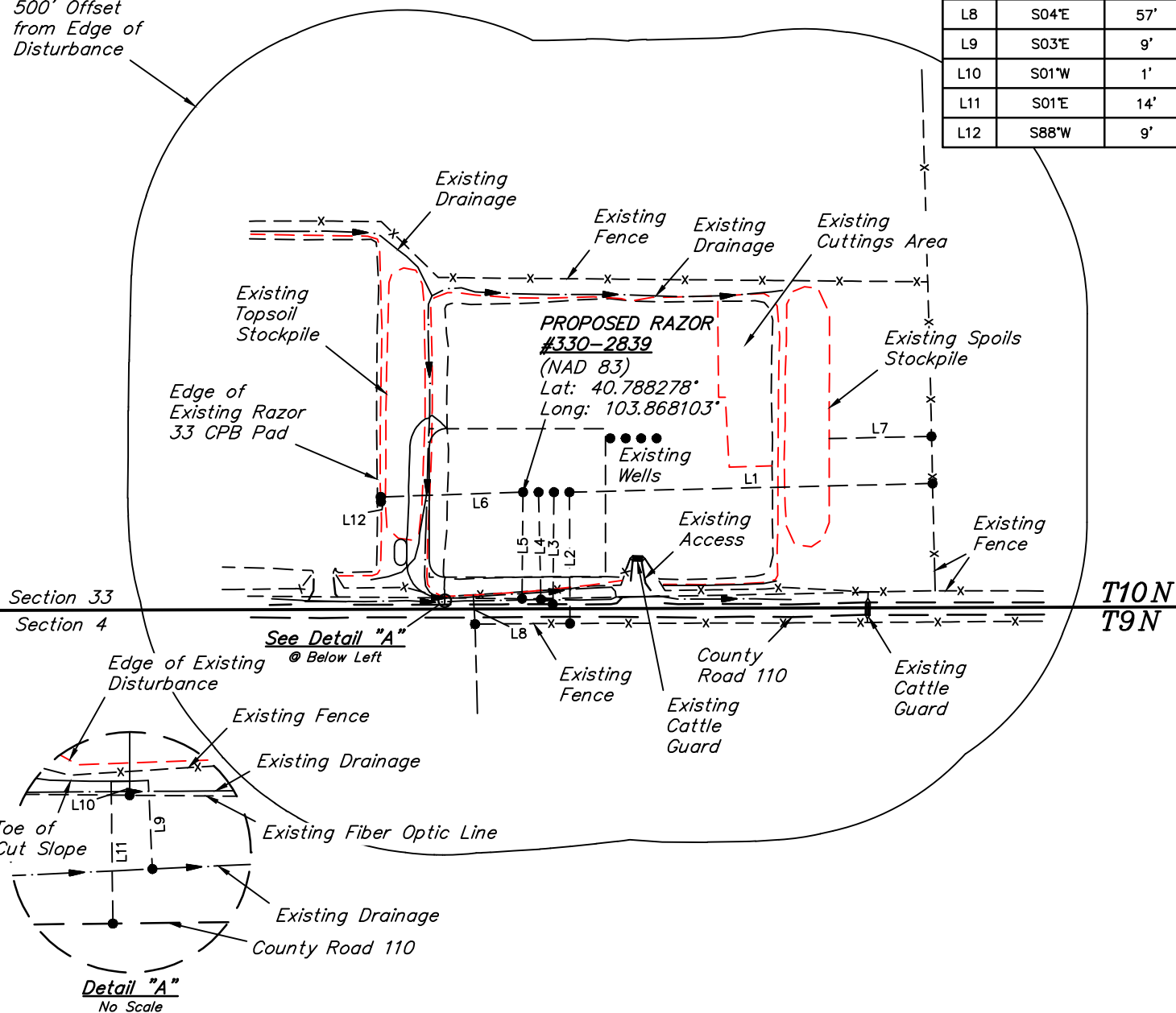


LINE TABLE		
LINE	DIRECTION	LENGTH
L1	N89°E	705'
L2	SOUTH	255'
L3	S01°W	217'
L4	S01°E	208'
L5	S01°W	207'
L6	S88°W	276'
L7	N89°E	199'
L8	S04°E	57'
L9	S03°E	9'
L10	S01°W	1'
L11	S01°E	14'
L12	S88°W	9'

500' Offset
from Edge of
Disturbance



NOTES:

WHITING OIL & GAS CORP.

RAZOR #330-2839, 2840, 2841 & 2842 ON EXISTING
RAZOR #330-2809, 2810, 2811 & 2812 PAD
SW 1/4 SE 1/4, SECTION 33, T10N, R58W, 6th P.M.
WELD COUNTY, COLORADO

SURVEYED BY: JARED CHRISTOPHER, J.S. | SURVEY DATE: 10-16-15

DRAWN BY: C.C.

DATE DRAWN: 11-02-15

SCALE: 1" = 300'

REVISED: 00-00-00

LOCATION DRAWING



UELS, LLC
Corporate Office * 85 South 200 East
Vernal, UT 84078 * (435) 789-1017