



# Kerr-McGee Oil & Gas Onshore LP

A subsidiary of Anadarko Petroleum Corporation

1099 18<sup>th</sup> Street  
Denver, CO 80202  
720-929-6000

June 16, 2017

Matt Lepore  
Director, Colorado Oil and Gas Conservation Commission  
Department of Natural Resources  
The Chancery Building  
1120 Lincoln Street, Suite 801  
Denver, CO 80203

Re: **30 Day Certification Letter - 318A.e**  
ROBIN 9-13HZ (Doc No. 401306568)  
Township 1 North, Range 65 West  
Section 9: SESE  
Unit Acreage: 640 Acres  
Unit Spacing: 01N65W SEC 9: S2SE  
01N65W SEC 16: E2  
01N65W SEC 21: E2  
Weld County, Colorado

Dear Director Lepore:

Kerr-McGee Oil and Gas Onshore LP ("KMG") hereby certifies that a thirty (30) day notice has been given by certified mail to all mineral owners in the proposed wellbore spacing unit. We have not received any objections to this spacing unit or location. KMG hereby respectfully requests approval of this well.

If you have any questions or issues regarding this permit, please contact me at (720) 929-6907.

Sincerely,

**Kerr-McGee Oil and Gas Onshore LP**

A handwritten signature in black ink, appearing to read 'John Piekara', written over a light gray circular stamp.

John Piekara  
Sr. Regulatory Analyst

Enclosure

# PROPOSED SPACING UNIT

## T1N, R65W

NW COR. SEC. 9  
FOUND #6 REB.  
W/ 2.5" A.C.  
PLS 25965

NE COR. SEC.9  
FOUND #6 REB.  
W/ 2.5" A.C.  
PLS 25965

N 1/4 COR. SEC. 9  
FOUND #6 REB.  
W/ 2.5" A.C.  
PLS 25965

N 89°33'38" E 2657.92'

N 89°34'03" E 2657.95'

N 00°23'17" W 2635.58'

N 00°10'11" W 2643.97'

S 00°00'10" W 2652.86'

C 1/4 COR. SEC. 9  
FOUND #6 REB.  
W/ 2.5" A.C.  
PLS 25965

W 1/4 COR. SEC. 9  
FOUND #6 REB.  
W/ 3.25" A.C.  
PLS 22098

N 89°44'55" E 2647.88'

N 89°45'06" E 2649.91'

SURFACE LOCATION NAD 83  
GROUND ELEVATION = 4975.1'  
LATITUDE = 40.059612°  
LONGITUDE = -104.662884°  
LATITUDE = 40°03'34.603"  
LONGITUDE = -104°39'46.382"  
HEEL LOCATION NAD 83  
LATITUDE = 40.059839°  
LONGITUDE = -104.665458°  
LATITUDE = 40°03'35.421"  
LONGITUDE = -104°39'55.649"  
BOTTOM HOLE LOCATION NAD 83  
LATITUDE = 40.030932°  
LONGITUDE = -104.665291°  
LATITUDE = 40°01'51.355"  
LONGITUDE = -104°39'55.048"

E 1/4 COR. SEC. 9  
FOUND #6 REB.  
W/ 2.5" A.C.  
PLS 25965

N 00°16'59" W 2677.18'

N 00°09'52" W 2664.95'

S 00°00'37" E 2652.55'

SW COR. SEC. 9  
FOUND #6 REB.  
W/ 2.5" A.C.  
PLS 25965

W 1/16 COR. SEC. 9  
FOUND #6 REB.  
W/ 2.5" A.C.  
PLS 27269

S 89°39'40" W 1321.42'

S 89°18'19" W 1320.99'

N 89°28'57" E 2642.83'

S 1/4 COR. SEC. 9  
FOUND #6 REB.  
W/ 2.5" A.C.  
PLS 25965

SE COR. SEC. 9  
FOUND #6 REB.  
W/ 2.5" A.C.  
PLS 23501

MATCHLINE  
SEE SHEET 2

ROBIN 9-15HZ  
SURFACE LOCATION

HEEL LOCATION

1640'

400'

318'

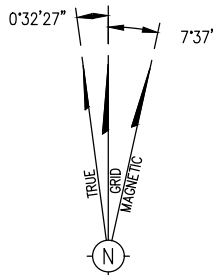
919'

WELL BORE CONTINUES  
INTO SECTION 16

I HEREBY CERTIFY THAT THIS WELL LOCATION CERTIFICATE WAS PREPARED BY ME, OR UNDER MY DIRECT SUPERVISION, THAT THE FIELD WORK WAS COMPLETED ON 3/22/2017, THAT THIS IS NOT A LAND SURVEY PLAT OR AN IMPROVEMENT SURVEY PLAT, AND THAT IT IS NOT TO BE RELIED UPON FOR ESTABLISHMENT OF FENCE, BUILDING, OR OTHER FUTURE IMPROVEMENT LINES.

AARON A. DEMO  
Professional Land Surveyor Registration No. 38285  
State of Colorado  
FOR AND ON BEHALF OF BASELINE ENGINEERING CORP.

NOTICE  
ACCORDING TO COLORADO STATE LAW YOU MUST COMMENCE ANY LEGAL ACTION BASED UPON ANY DEFECT IN THIS SURVEY WITHIN THREE YEARS AFTER YOU FIRST DISCOVER SUCH DEFECT. IN NO EVENT MAY ANY ACTION BASED UPON ANY DEFECT IN THIS SURVEY BE COMMENCED MORE THAN TEN YEARS FROM THE DATE ON THE CERTIFICATION SHOWN HEREON.



NOTE  
MAGNETIC NORTH IS CURRENT AS OF 03/24/2017  
MAGNETIC NORTH CHANGES WEST 00'06" PER YEAR.  
Scale 1" = 1000' ft

NOTES:

1. INDICATES SECTION CORNER
2. INDICATES CALCULATED CORNER
3. (C) INDICATES CALCULATED DIMENSION
4. ELEVATION BASED ON NAVD88 (GEOID12B)
5. BASIS OF BEARING DERIVED FROM COLORADO COORDINATE SYSTEM OF 1983 NORTH ZONE.
6. ALL MEASURED DISTANCES ARE GRID. COMBINED SCALE FACTOR 0.99972702 CALCULATED FROM THE SE CORNER OF SECTION 9, T1N, R65W
7. OPERATOR: JEFF VANHORN / PDOP = 1.3
8. SEE ADDENDUM TO WELL LOCATION CERTIFICATE FOR EXISTING IMPROVEMENTS WITHIN 500' OF THE WELL PAD.
9. WELL FOOTAGES ARE MEASURED AT RIGHT ANGLES TO THE SECTION LINES.
10. THE BOTTOM OF HOLE BEARS S00°47'37"E 10530' FROM THE HEEL LOCATION

WELL PAD — ROBIN 9-15HZ

ROBIN 9-15HZ  
WELL LOCATION CERTIFICATE  
318' FSL & 919' FEL SESE (SURFACE)  
400' FSL & 1640' FEL SWSE (HEEL)  
LOCATED IN SECTION 9  
T1N, R65W, 6TH P.M.  
WELD COUNTY, COLORADO  
467' FSL & 1596' FEL SWSE (BOTTOM)  
LOCATED IN SECTION 21  
T1N, R65W, 6TH P.M.  
WELD COUNTY, COLORADO

Kerr-McGee Oil &  
Gas Onshore L.P.  
1099 18th Street  
Denver, Colorado 80202

DRAWN BY  
JMH

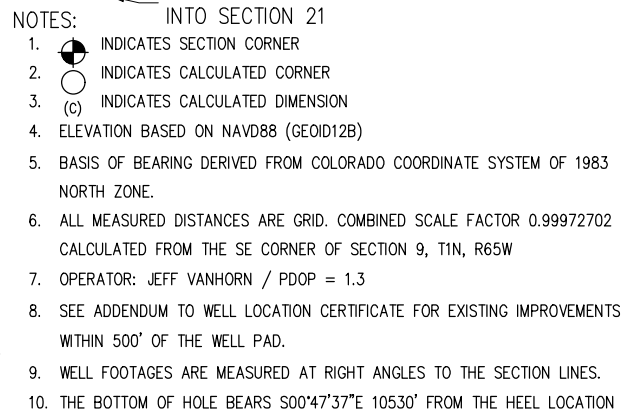
CHECKED BY  
AAD

SUBMITTAL DATE 4/7/2017  
REVISED 4/18/2017  
DRAWING SIZE 8.5" X 11"  
JOB NO. ANA01N65W09-02  
SHEET 1 OF 3

**BASELINE**  
Engineering - Planning - Surveying

4007 S. LINCOLN AVENUE, SUITE 405 • LOVELAND, COLORADO 80537  
P: 970.363.7800 • F: 970.363.7801 • www.baselinescorp.com

# T1N, R65W



Scale 1" = 1000' ft

**BASELINE**  
Engineering • Planning • Surveying  
4007 S. LINCOLN AVENUE, SUITE 405 • LOVELAND, COLORADO 80537  
P. 970/383.7900 • F. 970/383.7901 • [www.baselineccom.com](http://www.baselineccom.com)

# PROPOSED SPACING UNIT

## T1N, R65W

WELL BORE CONTINUES  
INTO SECTION 16

MATCHLINE  
SEE SHEET 2

NW COR. SEC. 21  
FOUND #4 REB.  
W/ 2.5" A.C.  
PLS 19585

N 1/4 COR. SEC. 21  
FOUND #6 REB.  
W/ 3.25" A.C.  
PLS 27269

NE COR. SEC. 21  
FOUND #6 REB.  
W/ 2.5" A.C.  
PLS 19585

S 89°58'56" E 2648.67'

S 89°59'05" E 2648.65'

N 00°36'49" W 2682.52'

N 00°29'14" W 2663.18'(C)

S 00°47'37" E 10530' GRID  
S 00°15'10" E TRUE  
S 08°56'55" E MAGNETIC

S 00°20'50" E 2643.98'

W 1/4 COR. SEC. 21  
FOUND #6 REB.  
W/ 2" A.C.  
PLS 25937

C 1/4 COR. SEC. 21  
(CALCULATED  
POSITION)

21

N 89°35'59" E 2642.10'(C)

E 1/4 COR. SEC. 21  
FOUND 1.5" I.P.  
W/ 3.25" A.C.  
PLS 27269

SURFACE LOCATION NAD 83  
GROUND ELEVATION = 4975.1'  
LATITUDE = 40.059612'  
LONGITUDE = -104.662884'  
LATITUDE = 40°03'34.603"  
LONGITUDE = -104°39'46.382"  
HEEL LOCATION NAD 83  
LATITUDE = 40.059839'  
LONGITUDE = -104.665458'  
LATITUDE = 40°03'35.421"  
LONGITUDE = -104°39'55.649"  
BOTTOM HOLE LOCATION NAD 83  
LATITUDE = 40.030932'  
LONGITUDE = -104.665291'  
LATITUDE = 40°01'51.355"  
LONGITUDE = -104°39'55.048"

BOTTOM HOLE  
467' FSL & 1596' FEL

SW COR. SEC. 21  
FOUND #6 REB.  
W/ 2" A.C.  
PLS 25937

S 89°15'26" W 2637.27'

S 1/4 COR. SEC. 21  
FOUND #6 REB.  
W/ 3.25" A.C.  
PLS 10855

S 89°09'19" W 2645.06'

SE COR. SEC. 21  
FOUND #6 REB.  
W/ 3.25" A.C.  
PLS 10855

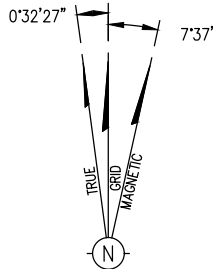
### NOTES:

- INDICATES SECTION CORNER
- INDICATES CALCULATED CORNER
- (C) INDICATES CALCULATED DIMENSION
- ELEVATION BASED ON NAVD88 (GEOID12B)
- BASIS OF BEARING DERIVED FROM COLORADO COORDINATE SYSTEM OF 1983 NORTH ZONE.
- ALL MEASURED DISTANCES ARE GRID. COMBINED SCALE FACTOR 0.99972702 CALCULATED FROM THE SE CORNER OF SECTION 9, T1N, R65W
- OPERATOR: JEFF VANHORN / PDOP = 1.3
- SEE ADDENDUM TO WELL LOCATION CERTIFICATE FOR EXISTING IMPROVEMENTS WITHIN 500' OF THE WELL PAD.
- WELL FOOTAGES ARE MEASURED AT RIGHT ANGLES TO THE SECTION LINES.
- THE BOTTOM OF HOLE BEARS S00°47'37"E 10530' FROM THE HEEL LOCATION

I HEREBY CERTIFY THAT THIS WELL LOCATION CERTIFICATE WAS PREPARED BY ME, OR UNDER MY DIRECT SUPERVISION, THAT THE FIELD WORK WAS COMPLETED ON 3/22/2017, THAT THIS IS NOT A LAND SURVEY PLAT OR AN IMPROVEMENT SURVEY PLAT, AND THAT IT IS NOT TO BE RELIED UPON FOR ESTABLISHMENT OF FENCE, BUILDING, OR OTHER FUTURE IMPROVEMENT LINES.

AARON A. DEMO  
Professional Land Surveyor Registration No. 38285  
State of Colorado  
FOR AND ON BEHALF OF BASELINE ENGINEERING CORP.

NOTICE  
ACCORDING TO COLORADO STATE LAW YOU MUST COMMENCE ANY LEGAL ACTION BASED UPON ANY DEFECT IN THIS SURVEY WITHIN THREE YEARS AFTER YOU FIRST DISCOVER SUCH DEFECT. IN NO EVENT MAY ANY ACTION BASED UPON ANY DEFECT IN THIS SURVEY BE COMMENCED MORE THAN TEN YEARS FROM THE DATE ON THE CERTIFICATION SHOWN HEREON.



NOTE  
MAGNETIC NORTH IS CURRENT AS OF 03/24/2017  
MAGNETIC NORTH CHANGES WEST 00°06' PER YEAR.

Scale 1" = 1000' ft

### WELL PAD — ROBIN 9-15HZ

ROBIN 9-15HZ  
WELL LOCATION CERTIFICATE  
318' FSL & 919' FEL SESE (SURFACE)  
400' FSL & 1640' FEL SWSE (HEEL)  
LOCATED IN SECTION 9  
T1N, R65W, 6TH P.M.  
WELD COUNTY, COLORADO  
467' FSL & 1596' FEL SWSE (BOTTOM)  
LOCATED IN SECTION 21  
T1N, R65W, 6TH P.M.  
WELD COUNTY, COLORADO

**Kerr-McGee Oil &  
Gas Onshore L.P.**

1099 18th Street  
Denver, Colorado 80202

DRAWN BY  
JMH

CHECKED BY  
AAD

SUBMITTAL DATE 4/7/2017

REVISED 4/18/2017

DRAWING SIZE 8.5" X 11"

JOB NO. ANA01N65W09-02

SHEET 3 OF 3

**BASELINE**  
Engineering - Planning - Surveying

4007 S. LINCOLN AVENUE, SUITE 405 • LOVELAND, COLORADO 80537  
P: 970.363.7800 • F: 970.363.7801 • www.baselinecorp.com