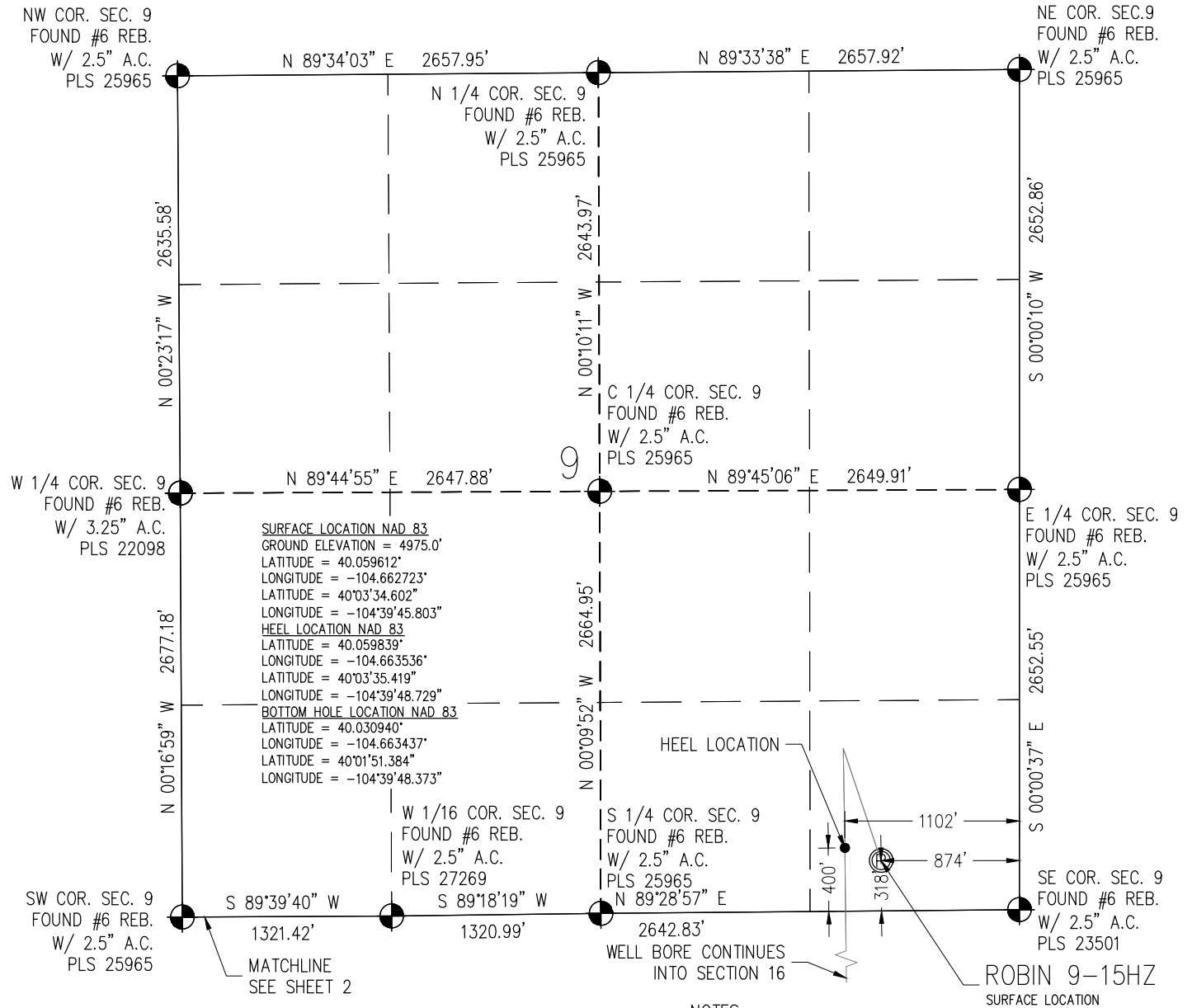


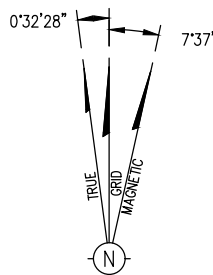
T1N, R65W



I HEREBY CERTIFY THAT THIS WELL LOCATION CERTIFICATE WAS PREPARED BY ME, OR UNDER MY DIRECT SUPERVISION, THAT THE FIELD WORK WAS COMPLETED ON 3/22/2017, THAT THIS IS NOT A LAND SURVEY PLAT OR AN IMPROVEMENT SURVEY PLAT, AND THAT IT IS NOT TO BE RELIED UPON FOR ESTABLISHMENT OF FENCE, BUILDING, OR OTHER FUTURE IMPROVEMENT LINES.

AARON A. DEMO
Professional Land Surveyor Registration No. 38285
State of Colorado
FOR AND ON BEHALF OF BASELINE ENGINEERING, CORP.

NOTICE
ACCORDING TO COLORADO STATE LAW YOU MUST COMMENCE ANY LEGAL ACTION BASED UPON ANY DEFECT IN THIS SURVEY WITHIN THREE YEARS AFTER YOU FIRST DISCOVER SUCH DEFECT. IN NO EVENT MAY ANY ACTION BASED UPON ANY DEFECT IN THIS SURVEY BE COMMENCED MORE THAN TEN YEARS FROM THE DATE ON THE CERTIFICATION SHOWN HEREON.



NOTE
MAGNETIC NORTH IS CURRENT AS OF 03/24/2017
MAGNETIC NORTH CHANGES WEST 00'06\"/>

NOTES:

1. INDICATES SECTION CORNER
2. INDICATES CALCULATED CORNER
3. (C) INDICATES CALCULATED DIMENSION
4. ELEVATION BASED ON NAVD88 (GEOID12B)
5. BASIS OF BEARING DERIVED FROM COLORADO COORDINATE SYSTEM OF 1983 NORTH ZONE.
6. ALL MEASURED DISTANCES ARE GRID. COMBINED SCALE FACTOR 0.99972702 CALCULATED FROM THE SE CORNER OF SECTION 9, T1N, R65W
7. OPERATOR: JEFF VANHORN / PDOP = 1.3
8. SEE ADDENDUM TO WELL LOCATION CERTIFICATE FOR EXISTING IMPROVEMENTS WITHIN 500' OF THE WELL PAD.
9. WELL FOOTAGES ARE MEASURED AT RIGHT ANGLES TO THE SECTION LINES.
10. THE BOTTOM OF HOLE BEARS S00°41'28\"/>

WELL PAD — ROBIN 9-15HZ

ROBIN 9-15HZ
WELL LOCATION CERTIFICATE
318' FSL & 874' FEL SESE (SURFACE)
400' FSL & 1102' FEL SESE (HEEL)
LOCATED IN SECTION 9
T1N, R65W, 6TH P.M.
WELD COUNTY, COLORADO
468' FSL & 1077' FEL SESE (BOTTOM)
LOCATED IN SECTION 21
T1N, R65W, 6TH P.M.
WELD COUNTY, COLORADO

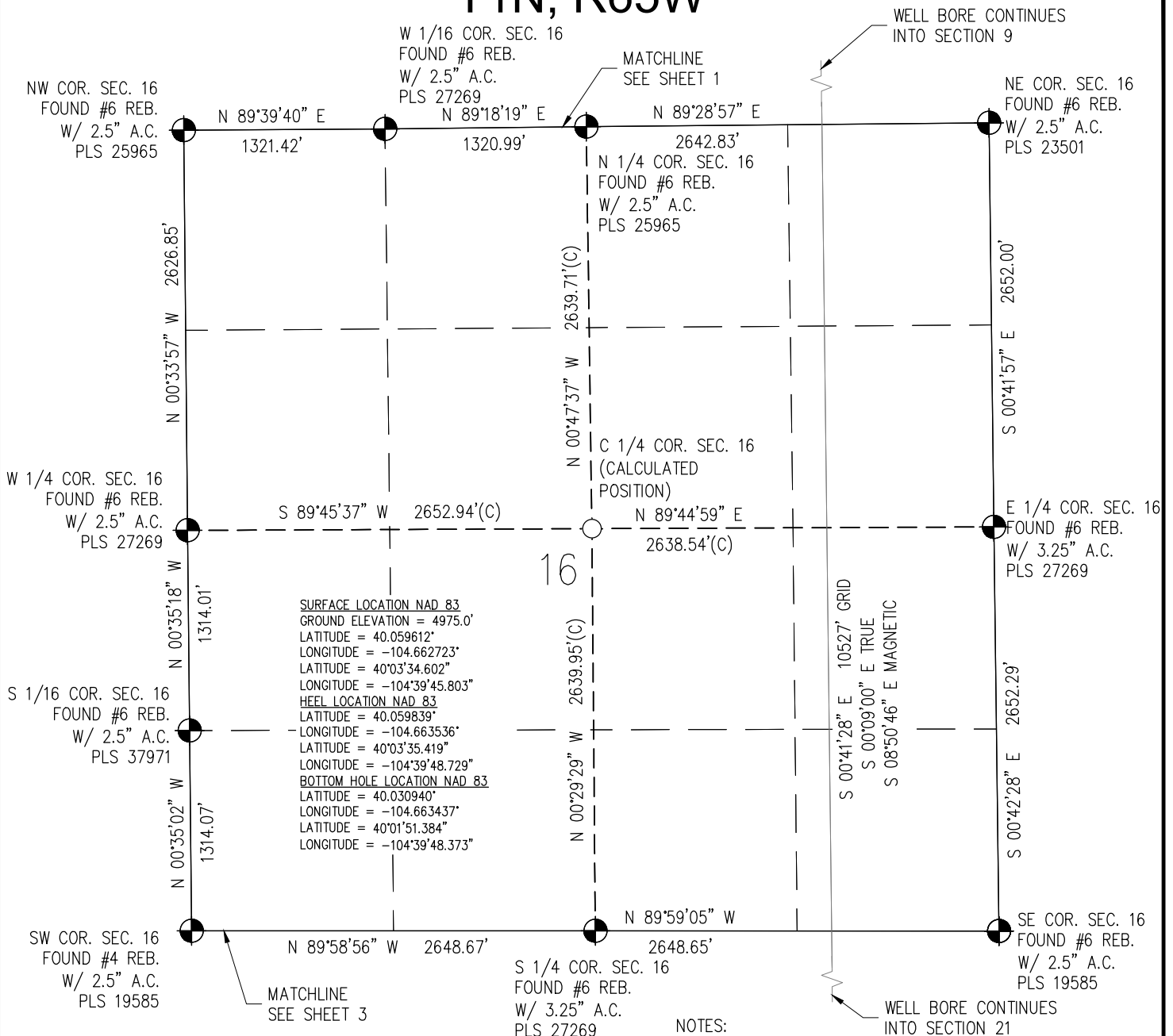
**Kerr-McGee Oil &
Gas Onshore L.P.**

**1099 18th Street
Denver, Colorado 80202**

DRAWN BY	JMH	CHECKED BY	AAD
SUBMITTAL DATE	4/7/2017		
REVISED	4/18/2017		
DRAWING SIZE	8.5" X 11"		
JOB NO.	ANA01N65W09-02		
SHEET	1	OF	3

BASELINE
Engineering - Planning - Surveying
4007 S. LINCOLN AVENUE, SUITE 405 • LOVELAND, COLORADO 80537
P: 970.353.7800 • F: 970.353.7801 • www.baselinecorp.com

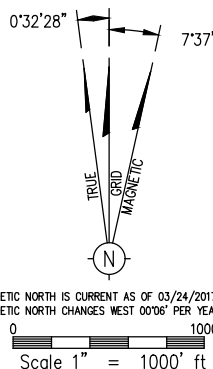
T1N, R65W



I HEREBY CERTIFY THAT THIS WELL LOCATION CERTIFICATE WAS PREPARED BY ME, OR UNDER MY DIRECT SUPERVISION, THAT THE FIELD WORK WAS COMPLETED ON 3/22/2017, THAT THIS IS NOT A LAND SURVEY PLAT OR AN IMPROVEMENT SURVEY PLAT, AND THAT IT IS NOT TO BE RELIED UPON FOR ESTABLISHMENT OF FENCE, BUILDING, OR OTHER FUTURE IMPROVEMENT LINES.

AARON A. DEMO
Professional Land Surveyor Registration No. 38285
State of Colorado
FOR AND ON BEHALF OF BASELINE ENGINEERING, P.C.

NOTICE
ACCORDING TO COLORADO STATE LAW YOU MUST COMMENCE ANY LEGAL ACTION BASED UPON ANY DEFECT IN THIS SURVEY WITHIN THREE YEARS AFTER YOU FIRST DISCOVER SUCH DEFECT. IN NO EVENT MAY ANY ACTION BASED UPON ANY DEFECT IN THIS SURVEY BE COMMENCED MORE THAN TEN YEARS FROM THE DATE ON THE CERTIFICATION SHOWN HEREON.



NOTES:

1. INDICATES SECTION CORNER
2. INDICATES CALCULATED CORNER
3. (C) INDICATES CALCULATED DIMENSION
4. ELEVATION BASED ON NAVD88 (GEOID12B)
5. BASIS OF BEARING DERIVED FROM COLORADO COORDINATE SYSTEM OF 1983 NORTH ZONE.
6. ALL MEASURED DISTANCES ARE GRID. COMBINED SCALE FACTOR 0.99972702 CALCULATED FROM THE SE CORNER OF SECTION 9, T1N, R65W
7. OPERATOR: JEFF VANHORN / PDOP = 1.3
8. SEE ADDENDUM TO WELL LOCATION CERTIFICATE FOR EXISTING IMPROVEMENTS WITHIN 500' OF THE WELL PAD.
9. WELL FOOTAGES ARE MEASURED AT RIGHT ANGLES TO THE SECTION LINES.
10. THE BOTTOM OF HOLE BEARS S00°41'28\"E 10527' FROM THE HEEL LOCATION

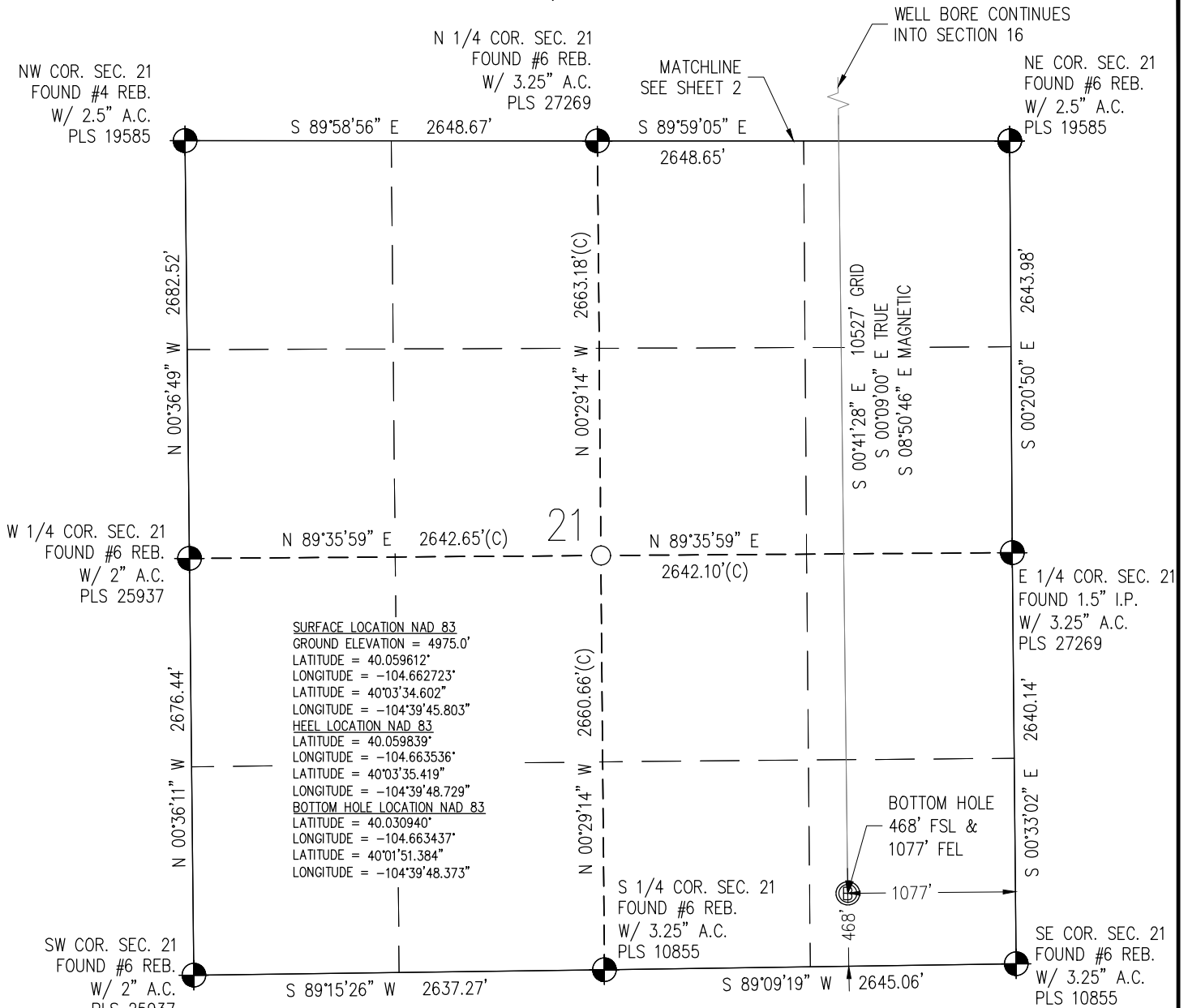
WELL PAD — ROBIN 9-15HZ
ROBIN 9-15HZ
WELL LOCATION CERTIFICATE
318' FSL & 874' FEL SESE (SURFACE)
400' FSL & 1102' FEL SESE (HEEL)
LOCATED IN SECTION 9
T1N, R65W, 6TH P.M.
WELD COUNTY, COLORADO
468' FSL & 1077' FEL SESE (BOTTOM)
LOCATED IN SECTION 21
T1N, R65W, 6TH P.M.
WELD COUNTY, COLORADO

**Kerr-McGee Oil &
Gas Onshore L.P.**
1099 18th Street
Denver, Colorado 80202

DRAWN BY JMH	CHECKED BY AAD
SUBMITTAL DATE 4/7/2017	REVISED 4/18/2017
DRAWING SIZE 8.5" X 11"	JOB NO. ANAO1N65W09-02
SHEET 2 OF 3	

BASELINE
Engineering - Planning - Surveying
4007 S. LINCOLN AVENUE, SUITE 405 • LOVELAND, COLORADO 80537
P: 970.353.7800 • F: 970.353.7801 • www.baselinescorp.com

T1N, R65W



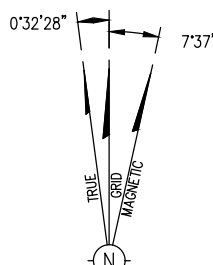
NOTES:

1. INDICATES SECTION CORNER
2. INDICATES CALCULATED CORNER
3. (C) INDICATES CALCULATED DIMENSION
4. ELEVATION BASED ON NAVD88 (GEOID12B)
5. BASIS OF BEARING DERIVED FROM COLORADO COORDINATE SYSTEM OF 1983 NORTH ZONE.
6. ALL MEASURED DISTANCES ARE GRID. COMBINED SCALE FACTOR 0.99972702 CALCULATED FROM THE SE CORNER OF SECTION 9, T1N, R65W
7. OPERATOR: JEFF VANHORN / PDOP = 1.3
8. SEE ADDENDUM TO WELL LOCATION CERTIFICATE FOR EXISTING IMPROVEMENTS WITHIN 500' OF THE WELL PAD.
9. WELL FOOTAGES ARE MEASURED AT RIGHT ANGLES TO THE SECTION LINES.
10. THE BOTTOM OF HOLE BEARS S00°41'28\"E 10527' FROM THE HEEL LOCATION

I HEREBY CERTIFY THAT THIS WELL LOCATION CERTIFICATE WAS PREPARED BY ME, OR UNDER MY DIRECT SUPERVISION, THAT THE FIELD WORK WAS COMPLETED ON 3/22/2017, THAT THIS IS NOT A LAND SURVEY PLAT OR AN IMPROVEMENT SURVEY PLAT, AND THAT IT IS NOT TO BE RELIED UPON FOR ESTABLISHMENT OF FENCE, BUILDING, OR OTHER FUTURE IMPROVEMENT LINES.

AARON A. DEMO
Professional Land Surveyor Registration No. 38285
State of Colorado
FOR AND ON BEHALF OF BASELINE ENGINEERING CORP.

NOTICE
ACCORDING TO COLORADO STATE LAW YOU MUST COMMENCE ANY LEGAL ACTION BASED UPON ANY DEFECT IN THIS SURVEY WITHIN THREE YEARS AFTER YOU FIRST DISCOVER SUCH DEFECT. IN NO EVENT MAY ANY ACTION BASED UPON ANY DEFECT IN THIS SURVEY BE COMMENCED MORE THAN TEN YEARS FROM THE DATE ON THE CERTIFICATION SHOWN HEREON.



NOTE
MAGNETIC NORTH IS CURRENT AS OF 03/24/2017
MAGNETIC NORTH CHANGES WEST 00'06\"/>

Scale 1" = 1000' ft

WELL PAD — ROBIN 9-15HZ

ROBIN 9-15HZ
WELL LOCATION CERTIFICATE
318' FSL & 874' FEL SESE (SURFACE)
400' FSL & 1102' FEL SESE (HEEL)
LOCATED IN SECTION 9
T1N, R65W, 6TH P.M.
WELD COUNTY, COLORADO
468' FSL & 1077' FEL SESE (BOTTOM)
LOCATED IN SECTION 21
T1N, R65W, 6TH P.M.
WELD COUNTY, COLORADO

**Kerr-McGee Oil &
Gas Onshore L.P.**

**1099 18th Street
Denver, Colorado 80202**

DRAWN BY
JMH

CHECKED BY
AAD

SUBMITTAL DATE 4/7/2017
REVISED 4/18/2017
DRAWING SIZE 8.5" X 11"
JOB NO. ANA01N65W09-02
SHEET 3 OF 3

BASELINE
Engineering - Planning - Surveying

4007 S. LINCOLN AVENUE, SUITE 405 • LOVELAND, COLORADO 80537
P: 970.363.7800 • F: 970.363.7801 • www.baselinecorp.com