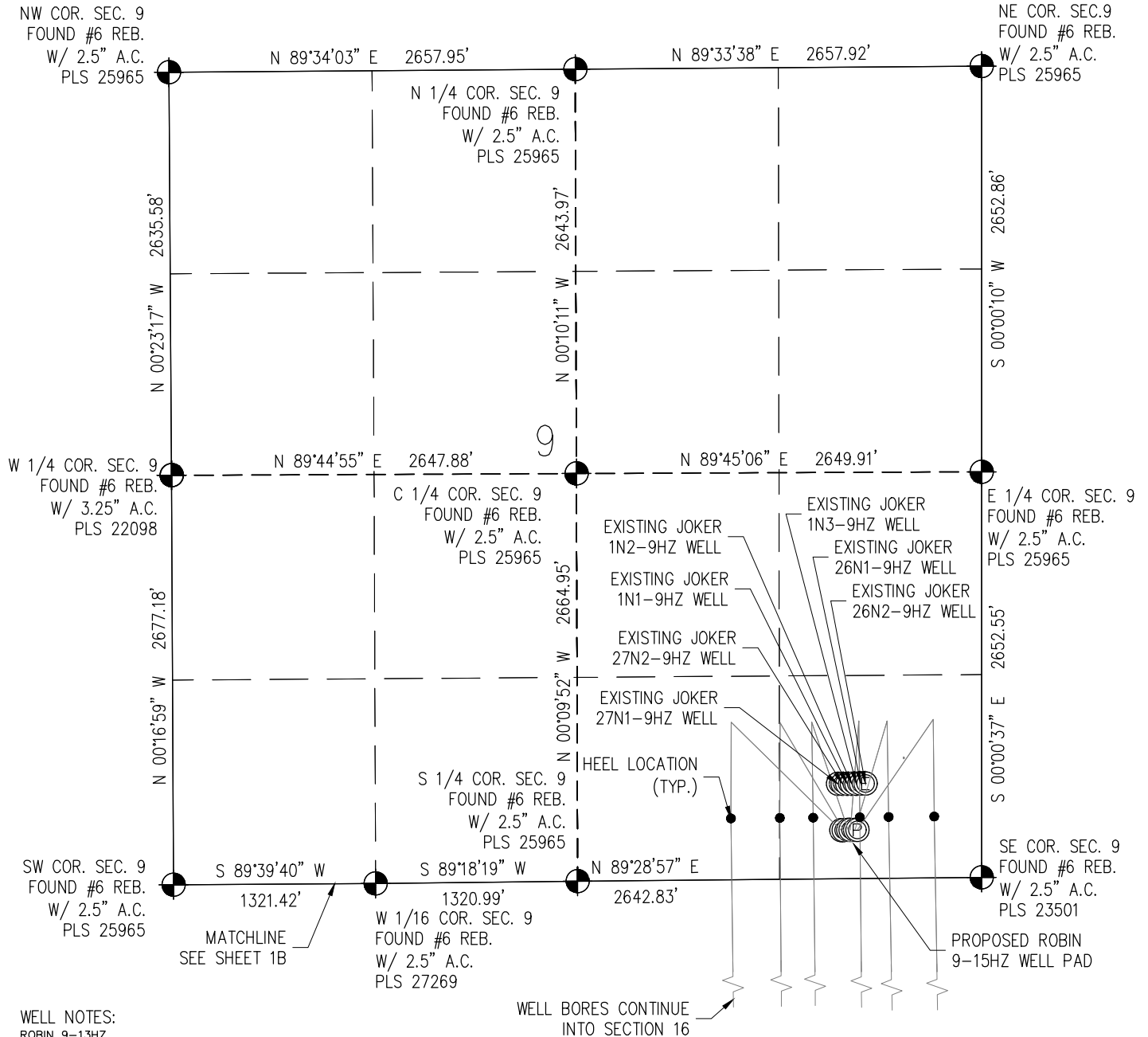


MULTI-WELL PLAN SECTION 9, T1N, R65W



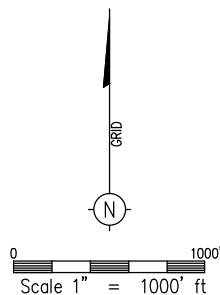
WELL NOTES:

- ROBIN 9-13HZ**
SURFACE: 318' FSL & 919' FEL, SECTION 9, T1N, R65W
BOTTOMHOLE: 467' FSL & 1596' FEL, SECTION 21, T1N, R65W
- ROBIN 9-14HZ**
SURFACE: 318' FSL & 904' FEL, SECTION 9, T1N, R65W
BOTTOMHOLE: 468' FSL & 1327' FEL, SECTION 21, T1N, R65W
- ROBIN 9-15HZ**
SURFACE: 318' FSL & 874' FEL, SECTION 9, T1N, R65W
BOTTOMHOLE: 468' FSL & 1077' FEL, SECTION 21, T1N, R65W
- ROBIN 9-16HZ**
SURFACE: 317' FSL & 859' FEL, SECTION 9, T1N, R65W
BOTTOMHOLE: 468' FSL & 795' FEL, SECTION 21, T1N, R65W
- ROBIN 9-17HZ**
SURFACE: 317' FSL & 829' FEL, SECTION 9, T1N, R65W
BOTTOMHOLE: 467' FSL & 520' FEL, SECTION 21, T1N, R65W
- ROBIN 9-18HZ**
SURFACE: 317' FSL & 814' FEL, SECTION 9, T1N, R65W
BOTTOMHOLE: 468' FSL & 228' FEL, SECTION 21, T1N, R65W

WELL BORES CONTINUE INTO SECTION 16

NOTES:

1. INDICATES SECTION CORNER
2. INDICATES CALCULATED CORNER
3. (C) INDICATES CALCULATED DIMENSION
4. BASIS OF BEARING DERIVED FROM COLORADO COORDINATE SYSTEM OF 1983 NORTH ZONE.
5. ALL MEASURED DISTANCES ARE GRID.
COMBINED SCALE FACTOR 0.99972702 CALCULATED FROM THE SE. CORNER OF SECTION 9, T1N, R65W
6. WELL FOOTAGES ARE MEASURED AT RIGHT ANGLES TO THE SECTION LINES.



WELL PAD — ROBIN 9-15HZ

MULTI-WELL PAD PLAN
ROBIN 9-13HZ, ROBIN 9-14HZ,
ROBIN 9-15HZ, ROBIN 9-16HZ,
ROBIN 9-17HZ, ROBIN 9-18HZ
LOCATED IN SECTION 9 T1N,
R65W, 6TH P.M.
WELD COUNTY, COLORADO

**Kerr-McGee Oil &
Gas Onshore L.P.**

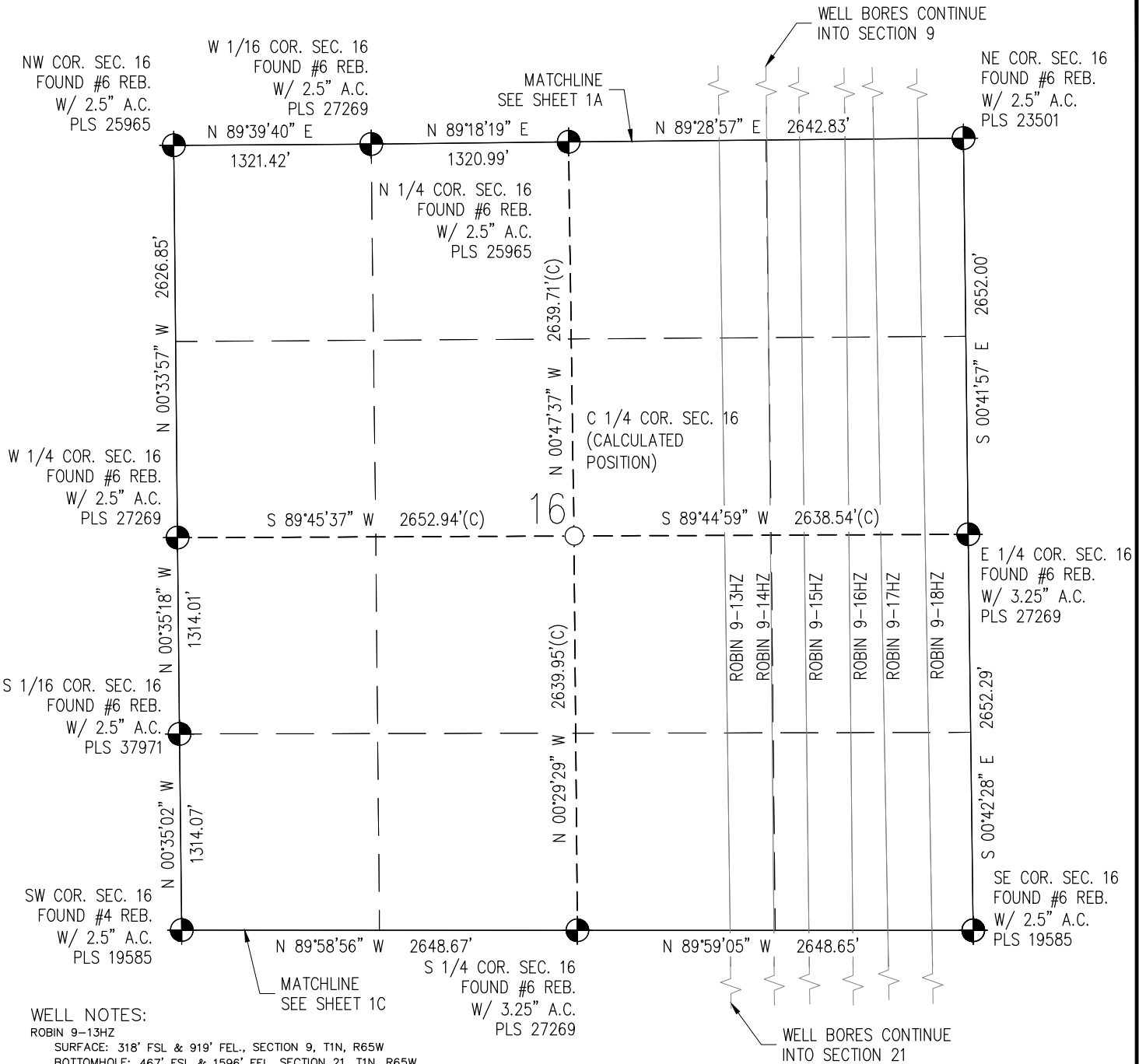
1099 18th Street
Denver, Colorado 80202

DRAWN BY JMH	CHECKED BY AAD
SUBMITTAL DATE 4/7/2017	
REVISED 4/18/2017	
DRAWING SIZE 8.5" X 11"	
JOB NO. ANAO1N65W09-02	
SHEET 1A OF 1	

BASELINE
Engineering - Planning - Surveying

4007 S. LINCOLN AVENUE, SUITE 405 • LOVELAND, COLORADO 80537
P: 970.353.7800 • F: 970.353.7801 • www.baselinescorp.com

MULTI-WELL PLAN SECTION 16, T1N, R65W



WELL NOTES:

ROBIN 9-13HZ
SURFACE: 318' FSL & 919' FEL., SECTION 9, T1N, R65W
BOTTOMHOLE: 467' FSL & 1596' FEL, SECTION 21, T1N, R65W

ROBIN 9-14HZ
SURFACE: 318' FSL & 904' FEL, SECTION 9, T1N, R65W
BOTTOMHOLE: 468' FSL & 1327' FEL, SECTION 21, T1N, R65W

ROBIN 9-15HZ
SURFACE: 318' FSL & 874' FEL, SECTION 9, T1N, R65W
BOTTOMHOLE: 468' FSL & 1077' FEL, SECTION 21, T1N, R65W

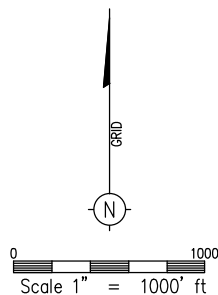
ROBIN 9-16HZ
SURFACE: 317' FSL & 859' FEL, SECTION 9, T1N, R65W
BOTTOMHOLE: 468' FSL & 795' FEL, SECTION 21, T1N, R65W

ROBIN 9-17HZ
SURFACE: 317' FSL & 829' FEL, SECTION 9, T1N, R65W
BOTTOMHOLE: 467' FSL & 520' FEL, SECTION 21, T1N, R65W

ROBIN 9-18HZ
SURFACE: 317' FSL & 814' FEL, SECTION 9, T1N, R65W
BOTTOMHOLE: 468' FSL & 228' FEL, SECTION 21, T1N, R65W

NOTES:

1. INDICATES SECTION CORNER
2. INDICATES CALCULATED CORNER
3. (C) INDICATES CALCULATED DIMENSION
4. BASIS OF BEARING DERIVED FROM COLORADO COORDINATE SYSTEM OF 1983 NORTH ZONE.
5. ALL MEASURED DISTANCES ARE GRID.
COMBINED SCALE FACTOR 0.99972702 CALCULATED FROM THE SE. CORNER OF SECTION 9, T1N, R65W
6. WELL FOOTAGES ARE MEASURED AT RIGHT ANGLES TO THE SECTION LINES.



WELL PAD — ROBIN 9-15HZ

MULTI-WELL PAD PLAN
ROBIN 9-13HZ, ROBIN 9-14HZ,
ROBIN 9-15HZ, ROBIN 9-16HZ,
ROBIN 9-17HZ, ROBIN 9-18HZ
LOCATED IN SECTION 9 T1N,
R65W, 6TH P.M.
WELD COUNTY, COLORADO

**Kerr-McGee Oil &
Gas Onshore L.P.**

**1099 18th Street
Denver, Colorado 80202**

DRAWN BY

JMH

CHECKED BY

AAD

SUBMITTAL DATE 4/7/2017

REVISED 4/18/2017

DRAWING SIZE 8.5" X 11"

JOB NO. ANA01N65W09-02

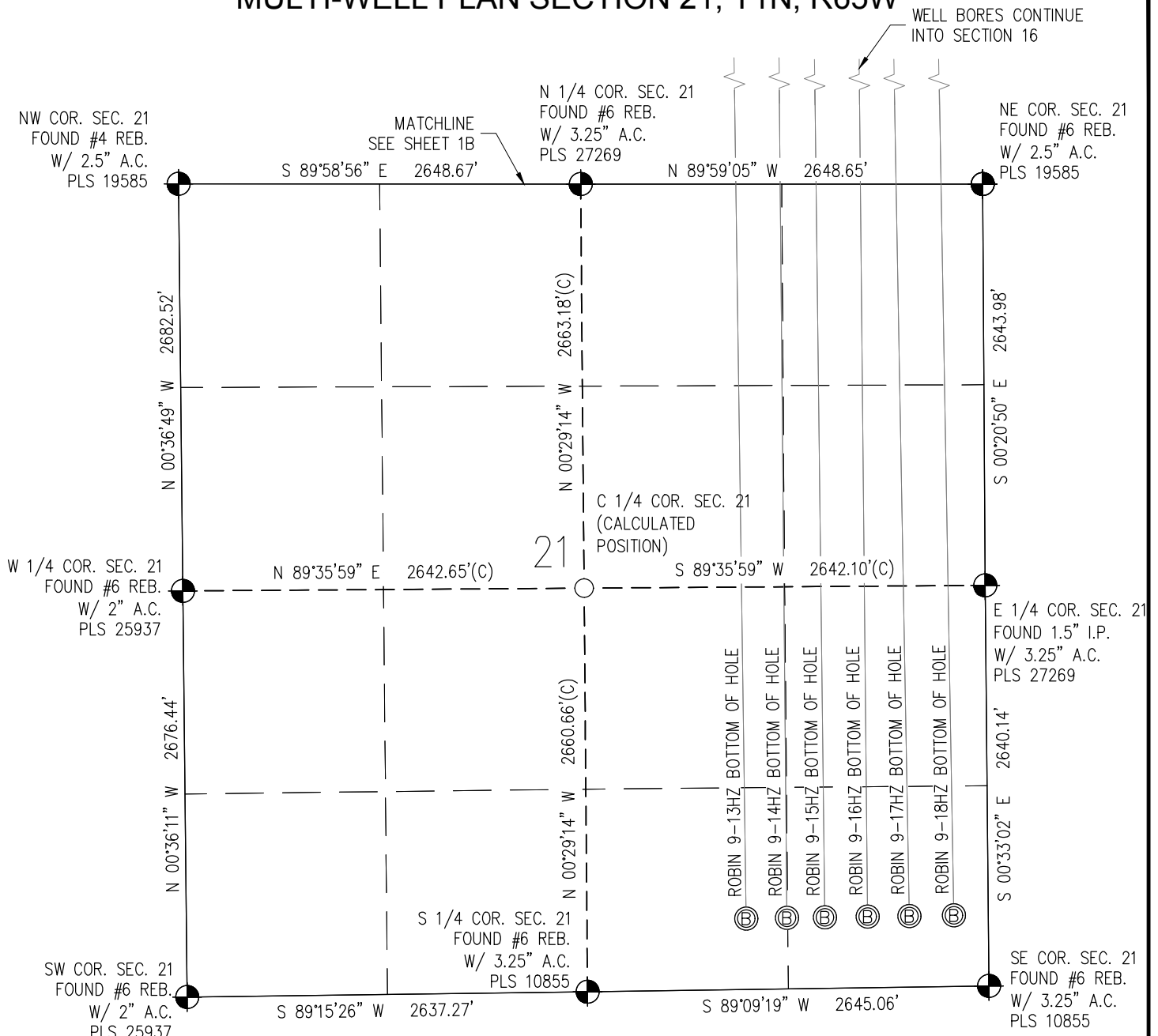
SHEET 1B OF 1

BASELINE

Engineering - Planning - Surveying

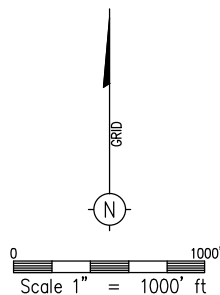
4007 S. LINCOLN AVENUE, SUITE 405 • LOVELAND, COLORADO 80537
P: 970.353.7800 • F: 970.353.7801 • www.baselinecorp.com

MULTI-WELL PLAN SECTION 21, T1N, R65W



WELL NOTES:

- ROBIN 9-13HZ
SURFACE: 318' FSL & 919' FEL., SECTION 9, T1N, R65W
BOTTOMHOLE: 467' FSL & 1596' FEL, SECTION 21, T1N, R65W
- ROBIN 9-14HZ
SURFACE: 318' FSL & 904' FEL, SECTION 9, T1N, R65W
BOTTOMHOLE: 468' FSL & 1327' FEL, SECTION 21, T1N, R65W
- ROBIN 9-15HZ
SURFACE: 318' FSL & 874' FEL, SECTION 9, T1N, R65W
BOTTOMHOLE: 468' FSL & 1077' FEL, SECTION 21, T1N, R65W
- ROBIN 9-16HZ
SURFACE: 317' FSL & 859' FEL, SECTION 9, T1N, R65W
BOTTOMHOLE: 468' FSL & 795' FEL, SECTION 21, T1N, R65W
- ROBIN 9-17HZ
SURFACE: 317' FSL & 829' FEL, SECTION 9, T1N, R65W
BOTTOMHOLE: 467' FSL & 520' FEL, SECTION 21, T1N, R65W
- ROBIN 9-18HZ
SURFACE: 317' FSL & 814' FEL, SECTION 9, T1N, R65W
BOTTOMHOLE: 468' FSL & 228' FEL, SECTION 21, T1N, R65W



NOTES:

1. INDICATES SECTION CORNER
2. INDICATES CALCULATED CORNER
3. (C) INDICATES CALCULATED DIMENSION
4. BASIS OF BEARING DERIVED FROM COLORADO COORDINATE SYSTEM OF 1983 NORTH ZONE.
5. ALL MEASURED DISTANCES ARE GRID.
COMBINED SCALE FACTOR 0.99972702 CALCULATED FROM THE SE. CORNER OF SECTION 9, T1N, R65W
6. WELL FOOTAGES ARE MEASURED AT RIGHT ANGLES TO THE SECTION LINES.

WELL PAD - ROBIN 9-15HZ

MULTI-WELL PAD PLAN
ROBIN 9-13HZ, ROBIN 9-14HZ,
ROBIN 9-15HZ, ROBIN 9-16HZ,
ROBIN 9-17HZ, ROBIN 9-18HZ
LOCATED IN SECTION 9 T1N,
R65W, 6TH P.M.
WELD COUNTY, COLORADO

**Kerr-McGee Oil &
Gas Onshore L.P.**

1099 18th Street
Denver, Colorado 80202

DRAWN BY JMH	CHECKED BY AAD
SUBMITTAL DATE 4/7/2017	
REVISED 4/18/2017	
DRAWING SIZE 8.5" X 11"	
JOB NO. ANAO1N65W09-02	
SHEET 1C OF 1	

BASELINE
Engineering - Planning - Surveying
4007 S. LINCOLN AVENUE, SUITE 405 - LOVELAND, COLORADO 80537
P: 970.353.7800 - F: 970.353.7801 - www.baselinescorp.com