

WELL LOCATION CERTIFICATE

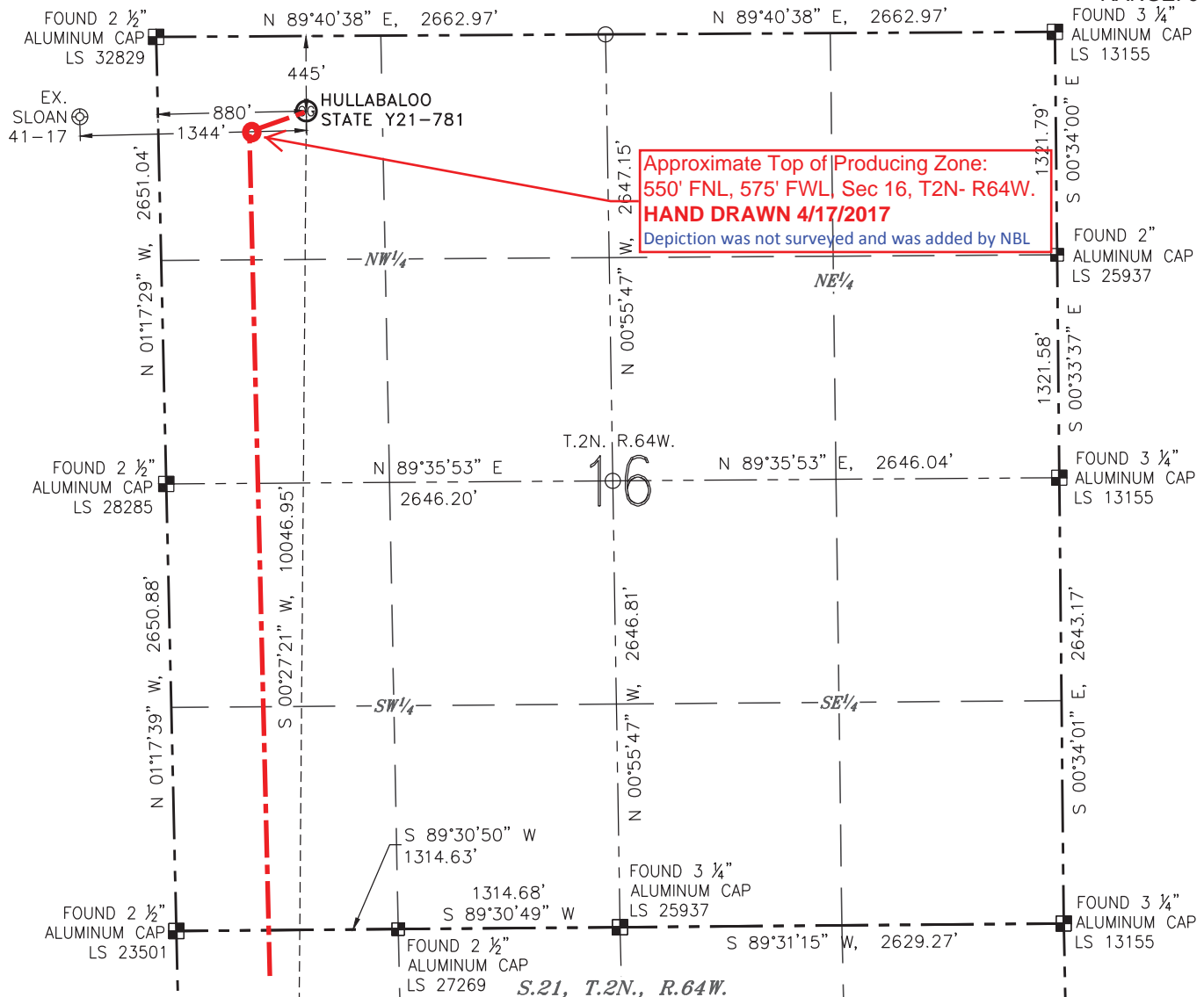
HULLABALOO STATE Y21-781

(SHEET 1 OF 2)

SECTION: 16

TOWNSHIP: 2N

RANGE: 64W



NOTES:

1. BEARINGS ARE GRID BEARINGS OF THE COLORADO STATE PLANE COORDINATE SYSTEM, NORTH ZONE, NAD 83. THE LINEAL DIMENSIONS SHOWN HEREON ARE BASED UPON THE "U.S. SURVEY FOOT".
2. GROUND ELEVATIONS ARE BASED UPON NGS OPUS SOLUTION NAVD 88 DATUM COMPUTED USING GEOID09.
3. IMPROVEMENTS: SEE LOCATION DRAWING FOR ALL VISIBLE IMPROVEMENTS WITHIN 500' OF THE DISTURBED AREA.
4. SURFACE USE: RANGELAND.
5. INSTRUMENT OPERATOR: ANDY MAGGIORE.
6. THE NEAREST EXISTING WELL: SLOAN 41-17, 1344' W.

IN ACCORDANCE WITH A REQUEST FROM GREG WILSON WITH NOBLE ENERGY INC., R&R ENGINEERS-SURVEYORS, INC. HAS DETERMINED THE SURFACE HOLE LOCATION OF THE HULLABALOO STATE Y21-781 WELL TO BE 445' FROM THE NORTH LINE AND 880' FROM THE WEST LINE AS MEASURED AT RIGHT ANGLES FROM THE SECTION LINES OF SECTION 16, TOWNSHIP 2 NORTH, RANGE 64 WEST, AND THE BOTTOM HOLE LOCATION TO BE 100' FROM THE SOUTH LINE AND 565' FROM THE WEST LINE AS MEASURED AT RIGHT ANGLES FROM THE SECTION LINES OF SECTION 21, TOWNSHIP 2 NORTH, RANGE 64 WEST OF THE 6TH PRINCIPAL MERIDIAN, WELD COUNTY, COLORADO.

I HEREBY CERTIFY THAT THIS WELL LOCATION CERTIFICATE WAS PREPARED BY ME, OR UNDER MY DIRECT SUPERVISION, THAT THE FIELD WORK WAS COMPLETED ON 09/13/2016, FOR AND ON BEHALF OF NOBLE ENERGY INC., THAT IT IS NOT A LAND SURVEY PLAT OR AN IMPROVEMENT SURVEY PLAT, AND THAT IT IS NOT TO BE RELIED UPON FOR ESTABLISHMENT OF FENCES, BUILDINGS, OR OTHER FUTURE IMPROVEMENT LINES.

SURFACE HOLE LOCATION

LATITUDE: N 40.14456°
LONGITUDE: W 104.56286°
PDOP: 2.0
ELEVATION: 4894'
¼-¼: NW¼NW¼

BOTTOM HOLE LOCATION

LATITUDE: N 40.11699°
LONGITUDE: W 104.56353°

LEGEND

- ⊗ PROPOSED WELL
- ⊙ EXISTING WELL
- ⊙ BOTTOM HOLE
- ⊙ FOUND MONUMENT
- CALCULATED POSITION



0 1000'
SCALE: 1" = 1000'



MEASURED FROM THE	BUILDING	BUILDING UNIT	HIGH OCCUPANCY BUILDING UNIT	DESIGNATED OUTSIDE ACTIVITY AREA	PUBLIC ROAD	ABOVEGROUND UTILITY	RAILROAD	PROPERTY LINE
PROPOSED WELLHEAD	3298' SW	3344' SW	5280'+	5280'+	4423' E (CR 55)	3323' SW	5280'+	445' N

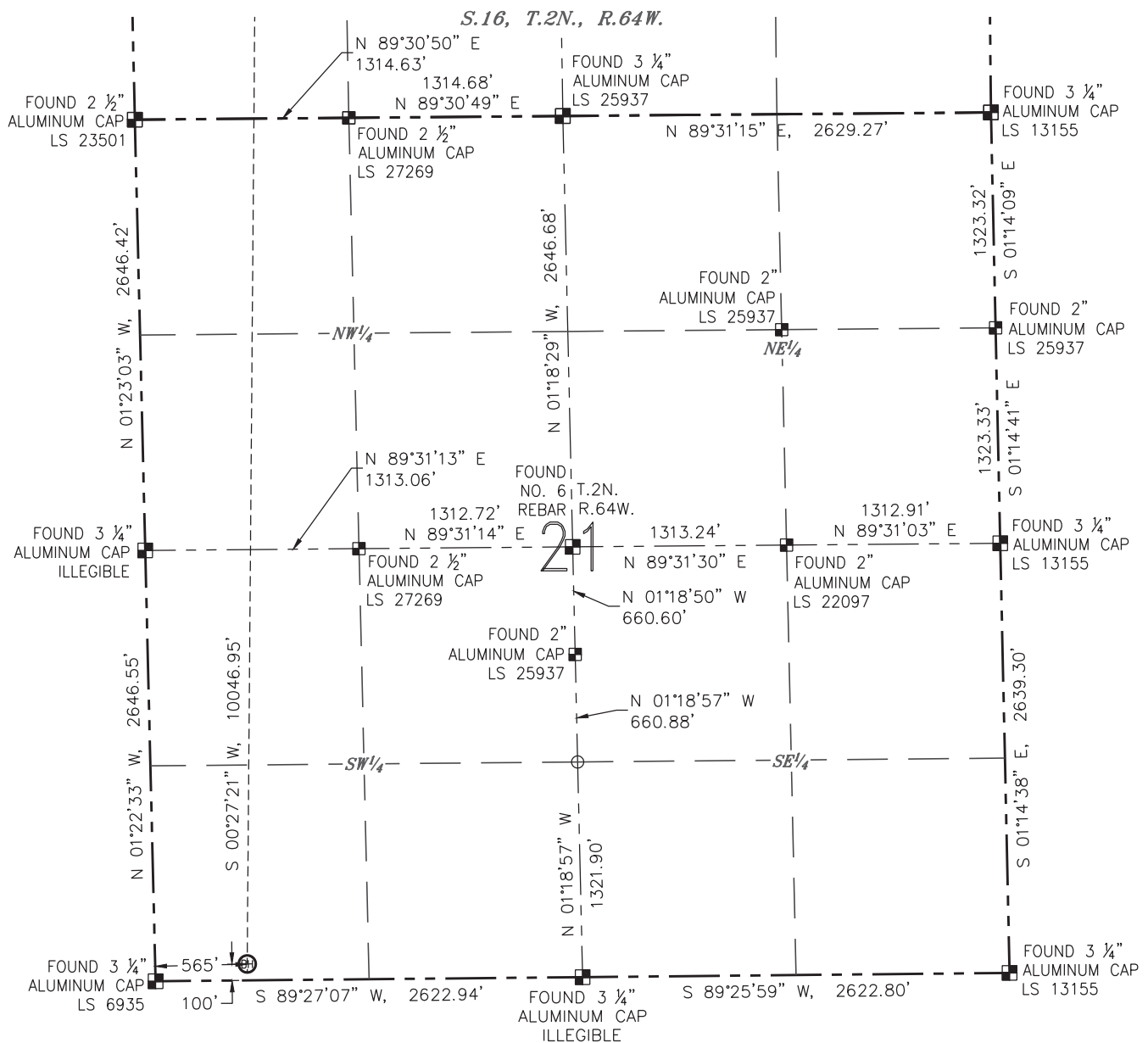
ANTONIO W. SMITH, PLS 38320
FOR AND ON BEHALF OF R&R
ENGINEERS-SURVEYORS, INC.

DATE: 02/10/2017
JOB #: NE16301

WELL LOCATION CERTIFICATE

HULLABALOO STATE Y21-781

(SHEET 2 OF 2)

SECTION: 16
TOWNSHIP: 2N
RANGE: 64W

LEGEND

- ⊗ PROPOSED WELL
- ⊙ EXISTING WELL
- ⊙ BOTTOM HOLE
- FOUND MONUMENT
- CALCULATED POSITION



0 1000'

SCALE: 1" = 1000'