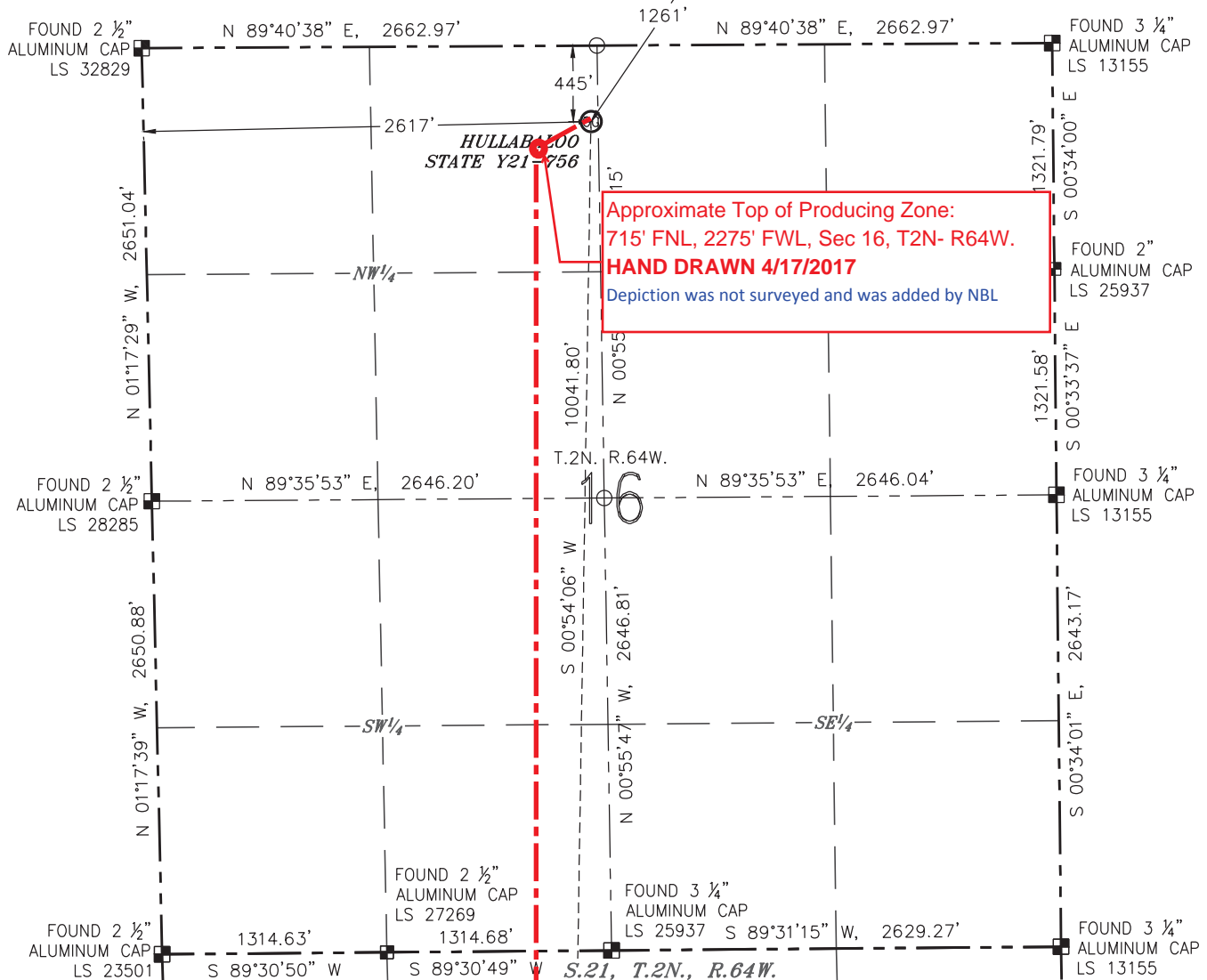


WELL LOCATION CERTIFICATE

HULLABALOO STATE Y21-756

(SHEET 1 OF 2) EX. PERKINS
34-9SECTION: 16
TOWNSHIP: 2N
RANGE: 64W

NOTES:

1. BEARINGS ARE GRID BEARINGS OF THE COLORADO STATE PLANE COORDINATE SYSTEM, NORTH ZONE, NAD 83. THE LINEAL DIMENSIONS SHOWN HEREON ARE BASED UPON THE "U.S. SURVEY FOOT".
2. GROUND ELEVATIONS ARE BASED UPON NGS OPUS SOLUTION NAVD 88 DATUM COMPUTED USING GEOID09.
3. IMPROVEMENTS: SEE LOCATION DRAWING FOR ALL VISIBLE IMPROVEMENTS WITHIN 500' OF THE DISTURBED AREA.
4. SURFACE USE: RANGELAND.
5. INSTRUMENT OPERATOR: ANDY MAGGIORE.
6. THE NEAREST EXISTING WELL: PERKINS 34-9, 1261' NE.

IN ACCORDANCE WITH A REQUEST FROM GREG WILSON WITH NOBLE ENERGY INC., R&R ENGINEERS-SURVEYORS, INC. HAS DETERMINED THE SURFACE HOLE LOCATION OF THE HULLABALOO STATE Y21-756 WELL TO BE 445' FROM THE NORTH LINE AND 2617' FROM THE WEST LINE AS MEASURED AT RIGHT ANGLES FROM THE SECTION LINES OF SECTION 16, TOWNSHIP 2 NORTH, RANGE 64 WEST, AND THE BOTTOM HOLE LOCATION TO BE 100' FROM THE SOUTH LINE AND 2225' FROM THE WEST LINE AS MEASURED AT RIGHT ANGLES FROM THE SECTION LINES OF SECTION 21, TOWNSHIP 2 NORTH, RANGE 64 WEST OF THE 6TH PRINCIPAL MERIDIAN, WELD COUNTY, COLORADO.

I HEREBY CERTIFY THAT THIS WELL LOCATION CERTIFICATE WAS PREPARED BY ME, OR UNDER MY DIRECT SUPERVISION, THAT THE FIELD WORK WAS COMPLETED ON 09/13/2016, FOR AND ON BEHALF OF NOBLE ENERGY INC., THAT IT IS NOT A LAND SURVEY PLAT OR AN IMPROVEMENT SURVEY PLAT, AND THAT IT IS NOT TO BE RELIED UPON FOR ESTABLISHMENT OF FENCES, BUILDINGS, OR OTHER FUTURE IMPROVEMENT LINES.

SURFACE HOLE LOCATION

LATITUDE: N 40.14454°
LONGITUDE: W 104.55665°
PDOP: 2.1
ELEVATION: 4912'
¼-¼: NE¼NW¼

BOTTOM HOLE LOCATION

LATITUDE: N 40.11699°
LONGITUDE: W 104.55760°

LEGEND

- ⊗ PROPOSED WELL
- ⊙ EXISTING WELL
- ⊕ BOTTOM HOLE
- FOUND MONUMENT
- CALCULATED POSITION



0 1000'
SCALE: 1" = 1000'



| MEASURED FROM THE | BUILDING | BUILDING UNIT | HIGH OCCUPANCY BUILDING UNIT | DESIGNATED OUTSIDE ACTIVITY AREA | PUBLIC ROAD | ABOVEGROUND UTILITY | RAILROAD | PROPERTY LINE |
|-------------------|----------|---------------|------------------------------|----------------------------------|-----------------|---------------------|----------|---------------|
| PROPOSED WELLHEAD | 2372' NE | 3258' SE | 5280'+ | 5280'+ | 2685' E (CR 55) | 2702' SE | 5280'+ | 445' N |

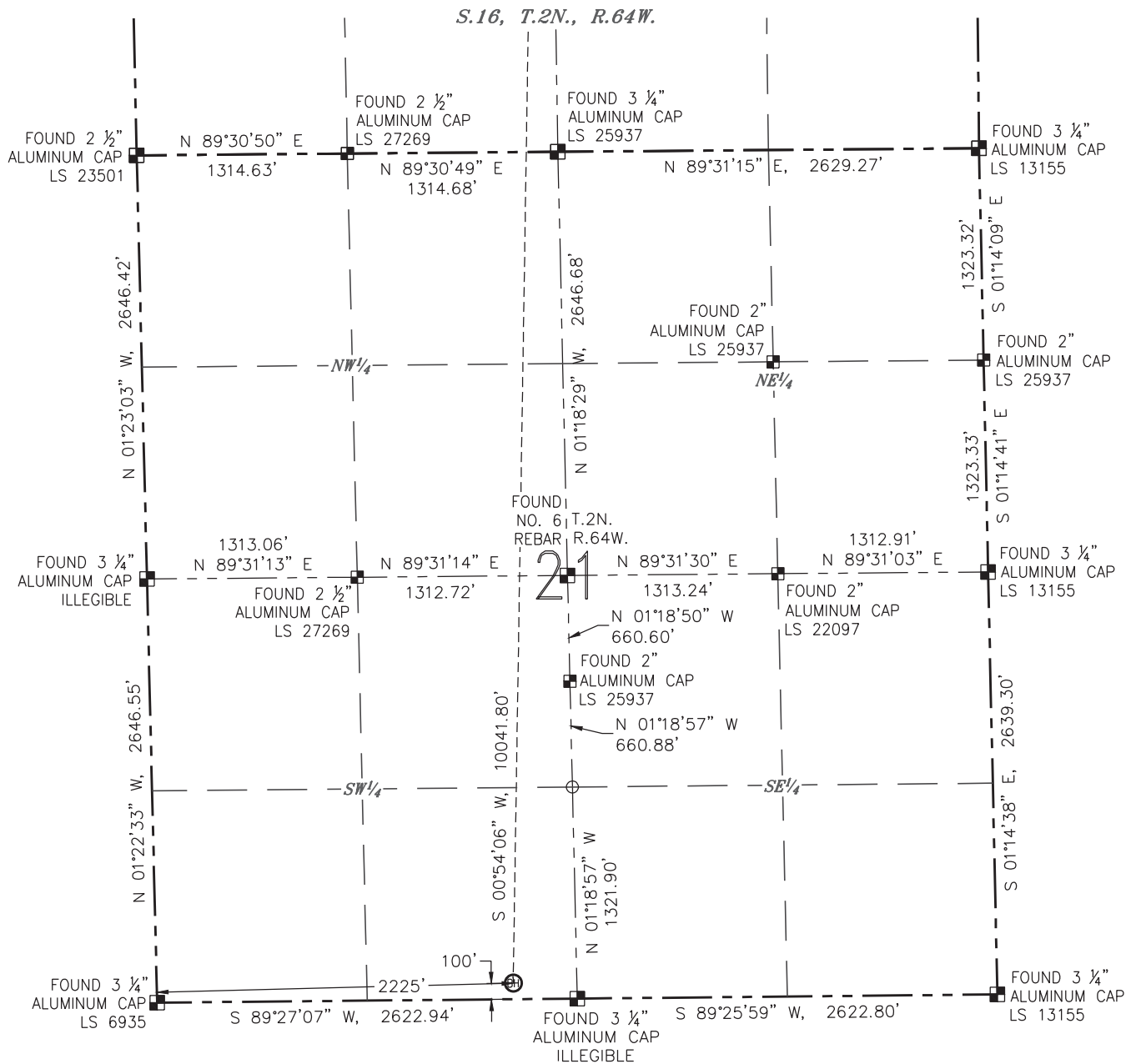
ANTONIO W. SMITH, PLS 38320
FOR AND ON BEHALF OF R&R
ENGINEERS-SURVEYORS, INC.

DATE: 02/06/2017
JOB #: NE16301






WELL LOCATION CERTIFICATE

HULLABALOO STATE Y21-756
(SHEET 2 OF 2)

SECTION: 16
TOWNSHIP: 2N
RANGE: 64W



LEGEND

-  PROPOSED WELL
 EXISTING WELL
 BOTTOM HOLE
 FOUND MONUMENT
 CALCULATED POSITION



0 1000'

SCALE: 1" = 1000'

DATE: 02/06/2017
JOB #: NE16301